

The background is a collage of various children's drawings. At the top left, a drawing shows a path leading to a 'high level' with a starburst. In the top center, a large circular structure is labeled 'enterens'. To the right, a drawing of a boat is labeled 'SECRET'. On the far right, a drawing of a person is labeled 'In the magic play tog friend whale.'. Below these, on the left, is a drawing of a 'tand tank'. In the bottom left, a drawing of a fish is labeled 'ng fish'. In the bottom center, a drawing of a blue whale is labeled 'blue whale' and 'water tube'. To the right of the whale, a drawing of a person is labeled 'Sea monster'. Further right, a drawing of a person is labeled 'a fish'. At the bottom right, a drawing of a person is labeled 'Secret hide out'.

DCR - MICHAEL JOYCE MEMORIAL PLAYGROUND AT MARINE PARK

Meeting Logistics

- Two ways to ask questions during the meeting
 - Use chat feature
 - Raise your hand using the Zoom function, and you will be given permissions to unmute and speak.
- *Please note that this public meeting will be recorded; the recording will be a public record.*

Zoom Controls

Drop down
menu to check
microphone and
speakers



Turn camera on/off

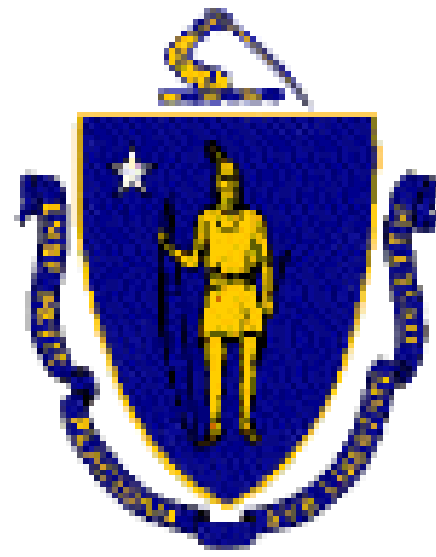


Raise your hand



Ask a question and
share comments





Commonwealth of Massachusetts

Governor

Charles D. Baker

Lieutenant Governor

Karyn E. Polito

Energy and Environmental Secretary

Kathleen A. Theoharides

Department of Conservation and Recreation Acting Commissioner

Stephanie Cooper



DCR Mission Statement

To protect, promote and enhance our common wealth of natural, cultural and recreational resources for the well-being of all.



AGENDA

- ADDRESS FEEDBACK FROM JANUARY 2022 MEETINGS
- UPDATED PLAN SHOWING CHANGES WITHIN LIMIT OF WORK
 - GATHERING SPACE REMOVED AND PICNIC TABLES RECONFIGURED
- NEW UPGRADED LED LIGHTING PLAN
- NEXT STEPS
- QUESTIONS AND COMMENT



UPDATED PLAN SHOWING CHANGES WITHIN LIMIT OF WORK

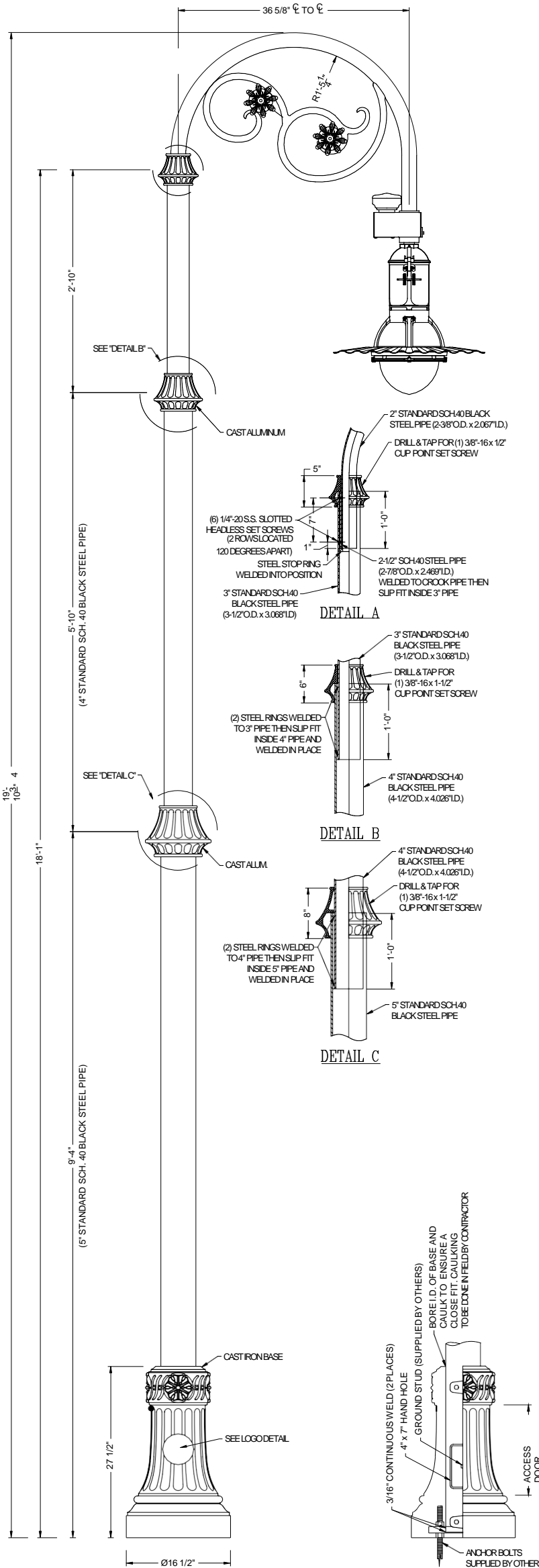




RENDERED PLAN



UPGRADED LED LIGHTING PLAN



LUMINAIRE SPECIFICATIONS

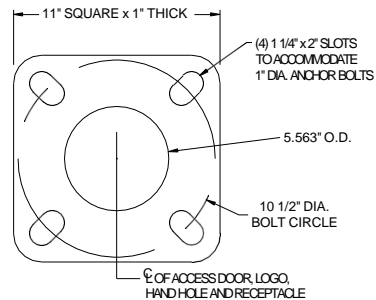
MANUFACTURER: KING LUMINAIRE
STYLE: K703
OPTICAL SYSTEM: FLAT ARRAY, SHALLOW LENS
IES CLASS.: TYPES III, V (SEE PHOTOMETRIC PLAN)
WATTAGE: 75W
LINE VOLTAGE: 120/277V
SERIES: 7030
CCT: 4000K
FED. STD. 14036 (GREEN)
C/W ISLC-3100-7P CONTROLLER
C/W KPL-11 LEVELING DEVICE
C/W TWISTLOCK RECEPTACLE
(PHOTO-EYE BY OTHERS)

CROOK SPECIFICATIONS

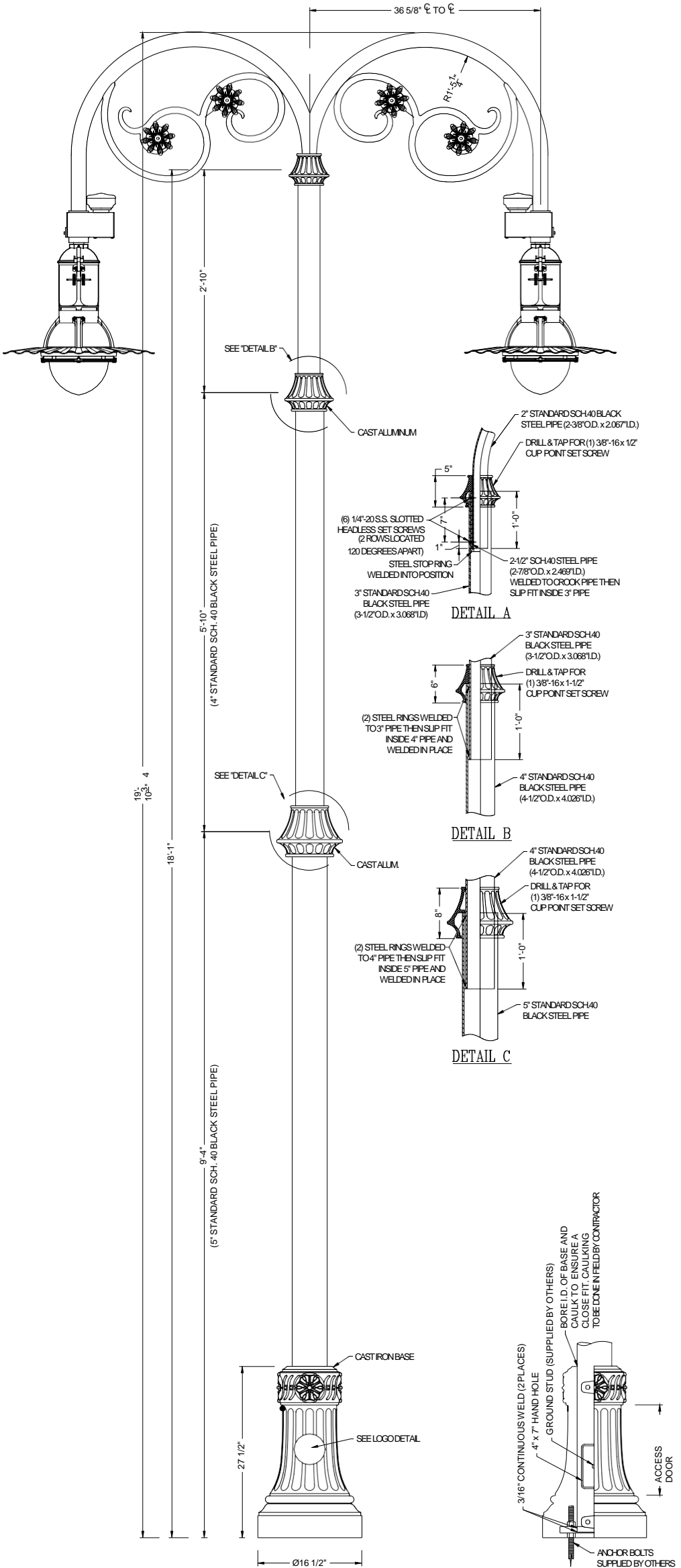
MANUFACTURER: SPRING CITY ELEC.
STYLE: OLD HARBOR
HEIGHT: 1'-9 1/4" +/-
WIDTH: 36 5/8" +/- ϕ OF POST TO ϕ OF LUMINAIRE
MATERIAL: STEEL PIPE WITH CAST ALUMINUM ORNAMENTATION
HD GALV, PRIMED & FINISH PAINTED
FED. STD. 14036 (GREEN)

LAMP POST SPECIFICATIONS

MANUFACTURER: SPRING CITY ELEC.
STYLE: NORTHAMPTON MODIFIED STEEL
HEIGHT: 18'-1" +/- (19'-10 3/4" +/- OVERALL)
BASE: 16 1/2" +/- DIAMETER
MATERIAL: SHAFT: 3 SECTIONS, BLACK STEEL PIPE
BASE: 2 PIECE WRAP AROUND HEAVY WALL CAST IRON
PER A.S.T.M. A 48-83 CLASS 30
FINISH: HD GALV, PRIMED & FINISH PAINTED
FED. STD. 14036 (GREEN)
ACCESS DOOR: LOCATED IN BASE TO COINCIDE WITH
HAND HOLE IN STEEL PIPE
GROUND PROVISIONS: 1/2"-13 SQUARE NUT WELDED TO INSIDE WALL OF
STEEL PIPE OPPOSITE HAND HOLE FOR GROUND
STUD (GROUND STUD SUPPLIED BY OTHERS)
ANCHOR BOLTS: (4) 1" DIA. x 30" + 4" HOOK (FULLY GALVANIZED
WITH 2 NUTS AND 2 WASHERS PER BOLT)
BOLT PROJECTION: 5" REQUIRED



TOP VIEW OF BASE PLATE



LUMINAIRE SPECIFICATIONS

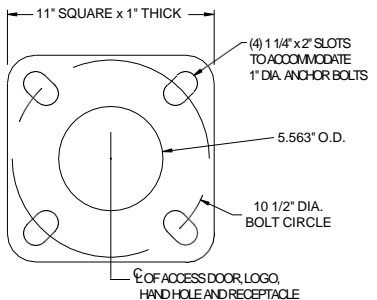
MANUFACTURER: KING LUMINAIRE
STYLE: K703
OPTICAL SYSTEM: FLAT ARRAY, SHALLOW LENS
IES CLASS.: TYPE IV (SEE PHOTOMETRIC PLAN)
WATTAGE: 75W
LINE VOLTAGE: 120/277V
SERIES: 7030
CCT: 4000K
FED. STD. 14036 (GREEN)
C/W ISLC-3100-7P CONTROLLER
C/W KPL-11 LEVELING DEVICE
C/W TWISTLOCK RECEPTACLE
(PHOTO-EYE BY OTHERS)

CROOK SPECIFICATIONS

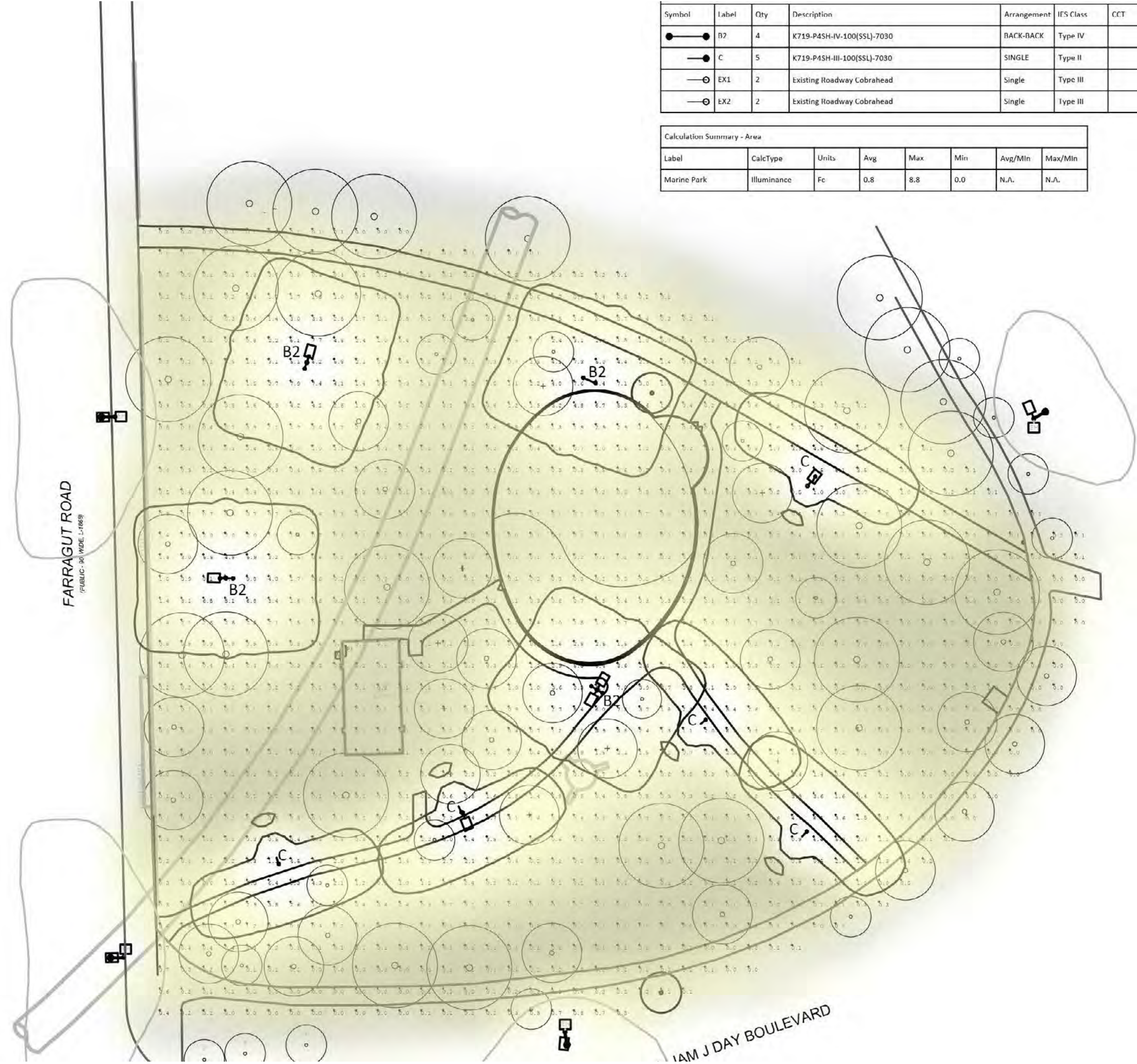
MANUFACTURER: SPRING CITY ELEC.
STYLE: OLD HARBOR - TWIN
HEIGHT: 1'-9 1/4" +/-
WIDTH: 36 5/8" +/- ϕ OF POST TO ϕ OF LUMINAIRE
MATERIAL: STEEL PIPE WITH CAST ALUMINUM ORNAMENTATION
HD GALV, PRIMED & FINISH PAINTED
FED. STD. 14036 (GREEN)

LAMP POST SPECIFICATIONS

MANUFACTURER: SPRING CITY ELEC.
STYLE: NORTHAMPTON MODIFIED STEEL
HEIGHT: 18'-1" +/- (19'-10 3/4" +/- OVERALL)
BASE: 16 1/2" +/- DIAMETER
MATERIAL: SHAFT: 3 SECTIONS, BLACK STEEL PIPE
BASE: 2 PIECE WRAP AROUND HEAVY WALL CAST IRON
PER A.S.T.M. A 48-83 CLASS 30
FINISH: HD GALV, PRIMED & FINISH PAINTED
FED. STD. 14036 (GREEN)
ACCESS DOOR: LOCATED IN BASE TO COINCIDE WITH
HAND HOLE IN STEEL PIPE
GROUND PROVISIONS: 1/2"-13 SQUARE NUT WELDED TO INSIDE WALL OF
STEEL PIPE OPPOSITE HAND HOLE FOR GROUND
STUD (GROUND STUD SUPPLIED BY OTHERS)
ANCHOR BOLTS: (4) 1" DIA. x 30" + 4" HOOK (FULLY GALVANIZED
WITH 2 NUTS AND 2 WASHERS PER BOLT)
BOLT PROJECTION: 5" REQUIRED



TOP VIEW OF BASE PLATE



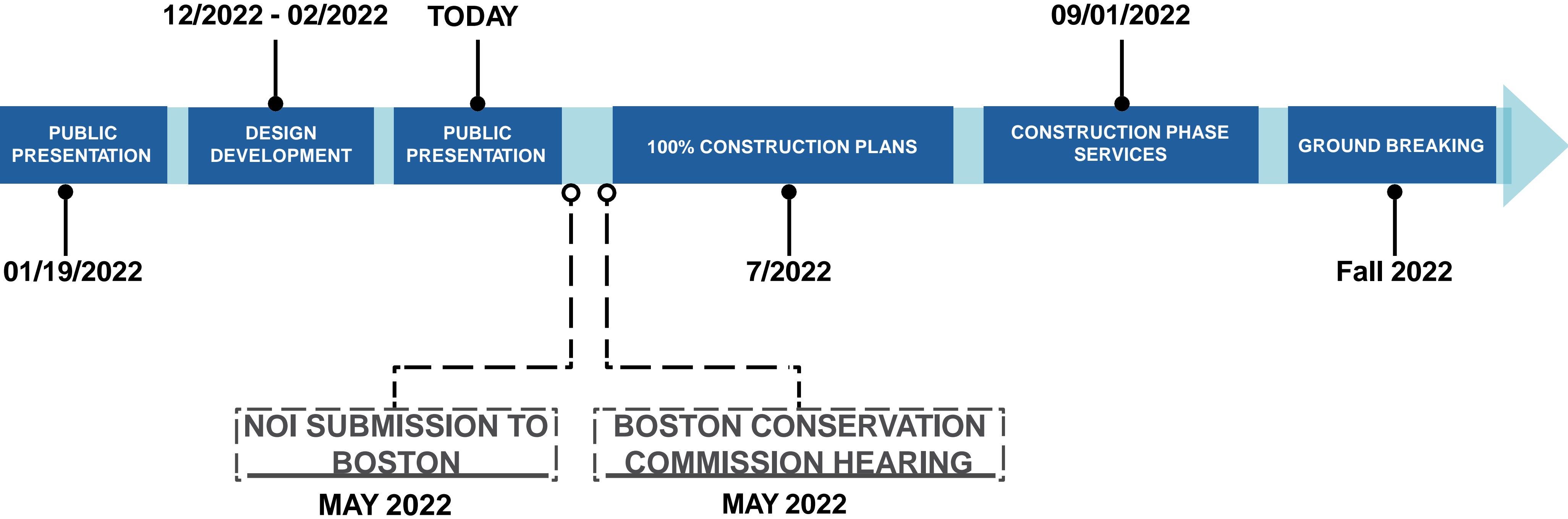
Symbol	Label	Qty	Description	Arrangement	IES Class	CCT	Arm	MH	LI F	Lumens	Watts	Filename
	B2	4	K719-P4SH-IV-100(SSL)-7030	BACK-BACK	Type IV		3		0.810	9281	97.2	
	C	5	K719-P4SH-III-100(SSL)-7030	SINGLE	Type II		3		0.810	9097	101.2	
	EX1	2	Existing Roadway Cobrahead	Single	Type III		6		0.810	17850	275.3	
	EX2	2	Existing Roadway Cobrahead	Single	Type III		6		0.810	8700	83	

Calculation Summary - Area							
Label	CalcType	Units	Avg	Max	Min	Avg/Min	Max/Min
Marine Park	Illuminance	Fc	0.8	8.8	0.0	N/A	N/A



NEXT STEPS

Project Schedule





QUESTIONS & COMMENTS

Additional Information

- Recording and tonight's slide deck will be available at:
 - www.mass.gov/dcr/past-public-meetings
- If you wish to subscribe to a DCR general information or project-related listserv: contact DCR's Office of Community Relations via email at mass.parks@mass.gov

A wide-angle photograph of a park on a clear, sunny day. The foreground is a lush green lawn with some fallen leaves. In the middle ground, there are several large, mature trees with green foliage. Behind the trees, a small, light-colored building with a dark roof is visible. To the left, a playground structure can be seen. In the background, a body of water and some distant buildings are visible under a bright blue sky.

THANK YOU!!



PLAYGROUND PERSPECTIVE & EQUIPMENT



PLAY STRUCTURE SELECTIONS





