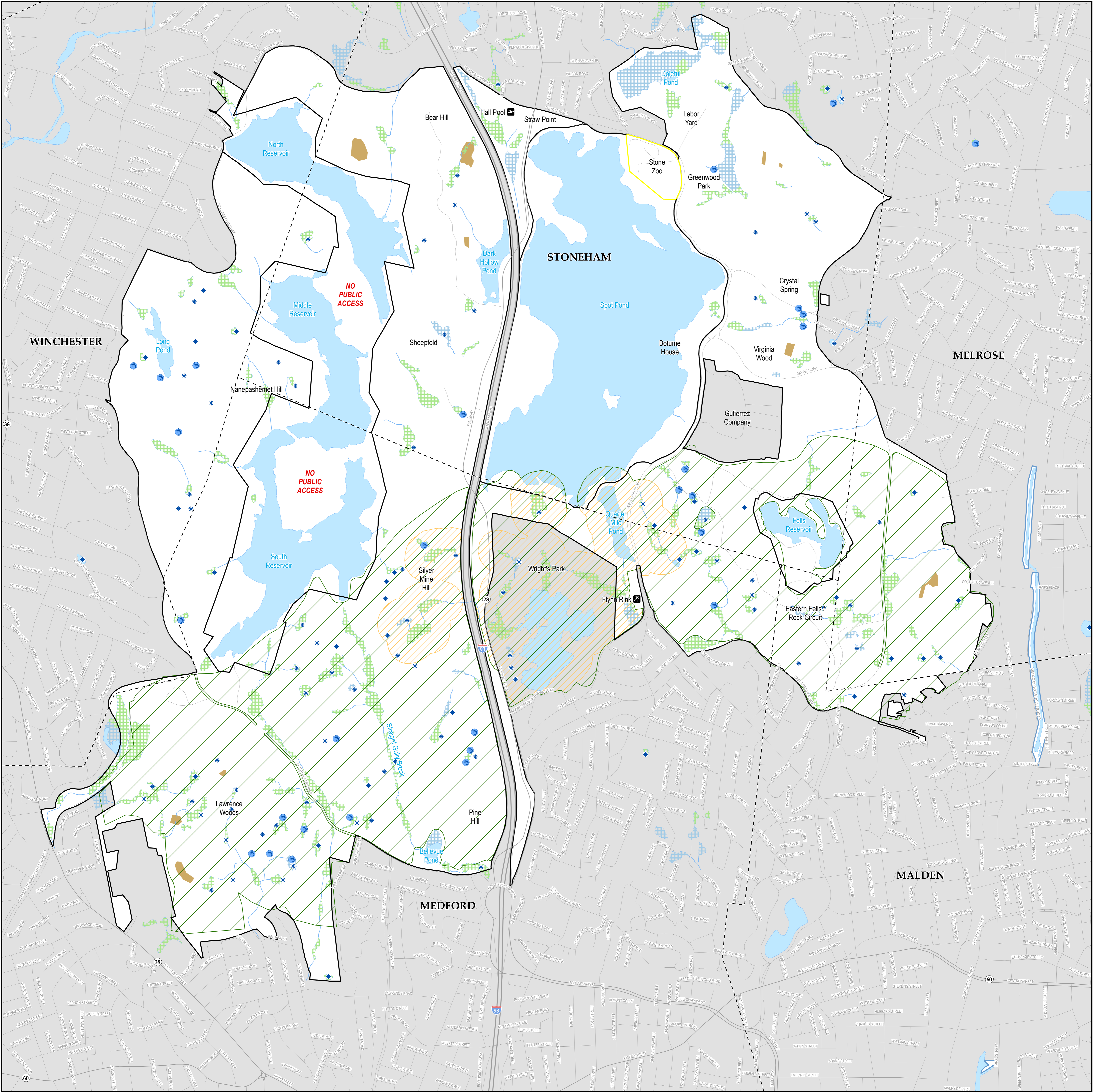


THE MIDDLESEX FELS PLANNING UNIT

MALDEN, MEDFORD, MELROSE, STONEHAM, AND WINCHESTER, MASSACHUSETTS

FIGURE 2.4.3. PRIORITY NATURAL RESOURCES



THE MIDDLESEX FELS PLANNING UNIT

MALDEN, MEDFORD, MELROSE, STONEHAM, AND WINCHESTER, MASSACHUSETTS

FIGURE 2.4.3. PRIORITY NATURAL RESOURCES

Sergeant George J. Hall Memorial Pool

John W. Flynn Memorial Ice Skating Rink

NHESP Certified Vernal Pools

NHESP Potential Vernal Pools (NOT equivalent to Certified Vernal Pools)

Highway

State Route

Road

Hydrologic Connection

Shoreline

Wetland Limit

Town Boundary

Middlesex Fells Reservation

Walter D. Stone Memorial Zoo

Spot Pond Brook

Open Water

Marsh

Wooded Marsh

NHESP Priority Habitats of Rare Species

NHESP Estimated Habitats of Rare Wildlife

NHESP Priority Natural Communities

NHESP BioMap2 Core Habitat

NHESP BioMap2 Critical Natural Landscape

NHESP BioMap2 Vernal Pool Core

00.51

Mile

1 inch = 0.1 mile

dcrrMassachusetts

DATA SOURCES:

NHESP data was developed by the Natural Heritage and Endangered Species Program, part of the Massachusetts Division of Fisheries and Wildlife. The data were not developed for use at the scale shown and are likely not accurate at this scale. Interpret at your own risk!

Reservation road and trail data were collected using GPS by DCR contractors and staff using a DCR protocol. These data are in DRAFT format. All protected open space boundaries are also in DRAFT format.

All background geographic data supplied by the Office of Geographic and Environmental Information (MassGIS). Hydrography data is DEP 1:12,000 wetlands.

DCR GIS - 12/2011