

Amphipods and Shrimp

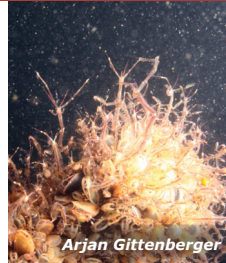


Caprella mutica
Pacific Skeleton Shrimp

Non-Native

Identification

- Mottled red body with a ridge of small spines along back half of the body
- Males can be over 2 inches long
- First two body segments are smooth and long in males, resembling a long neck
- Females are smaller and their first two body segments are smooth, but not elongated as in males



Distribution

- First reported on Prince Edward Island, Canada in 1998 and in New England in 2000
- Found throughout New England and the Canadian Maritimes
- Native to the Northwest Pacific



Palaemon elegans
Rockpool Shrimp

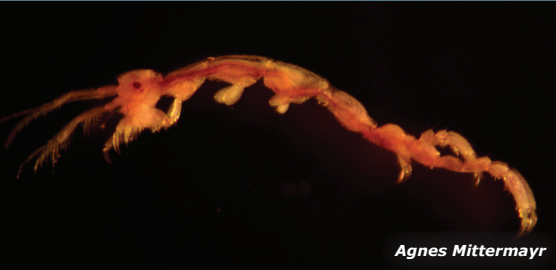
Non-Native

- Mostly translucent body with neon blue rings on claws, dark red-brown bands on body, and orange/blue bands on legs
- Up to 2.5 inches long
- Distinct, shovel-shaped rostrum with 7 to 9 teeth across the top



- First reported in Salem, Massachusetts in 2010
- Found throughout New England to mid-coast Maine
- Native to the Northeast Atlantic

Amphipods and Shrimp: Similar Species



Agnes Mittermayr

Family Caprellidae
Skeleton Shrimp

Native

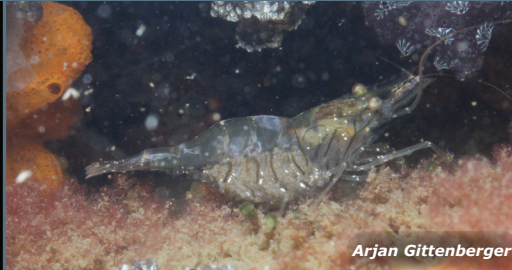
- *Caprella penantis* (above) is much smaller than *C. mutica* and has short body segments with no spines along the back



- *Aeginina longicornis* is the only species with males as big as *C. mutica*, but the first two body segments of *A. longicornis* are much smaller and spines are present along the entire back



Illustrations by Salem Sound Coastwatch



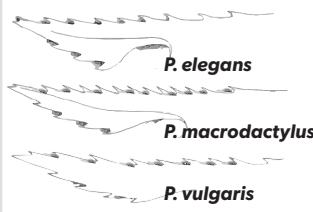
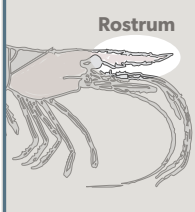
Arjan Gittenberger

Palaemon spp.
Native Grass Shrimp

Native

- Transparent, muted coloration and banding
- Some species native to the region include *P. vulgaris* (above), *P. pugio*, and *P. mundusnovus*

The shape of the **rostrum** and arrangement of teeth along it can help to distinguish palaemonid shrimp species



P. elegans

P. macrodactylus

P. vulgaris



Cristina Kennedy

Palaemon macrodactylus
Pacific Grass Shrimp

Non-Native

- Dark, muted body color with reddish spots and orange-beige bands on claws and legs
- Can have a whitish stripe along the back
- Usually 10 to 13 teeth across top of rostrum with double rows of setae (fine hairs) along bottom
- Native to the Northwest Pacific
- First observed in Long Island Sound in 2001, in Rhode Island in 2010, and now found north to New Hampshire
- Difficult to tell apart from native shrimp in the field