



# Morrissey Boulevard Commission Meeting

Southline Boston & Virtual via Zoom  
November 28, 2023





# Zoom Controls



- Drop down menu to check microphone and speakers



- Ask a question and share comments



- Raise your hand



- If you are unable to access the internet or are having technical problems, please call into the meeting at 305-224-1968, Webinar ID: 863 9584 5857



If you have trouble with the meeting technology during the presentation, please call:

1-888-799-9666

**Closed captioning automatically generated by Zoom**



Unmute



Start Video



Q&A



Raise Hand



Interpretation

Leave

# Meeting Notes and Procedures



## Notification of recording

- This virtual public meeting will be recorded. The Massachusetts Department of Transportation may choose to retain and distribute the video, still images, audio, and/or chat transcript.
- By continuing attendance with this virtual public meeting, you are consenting to participate in a recorded event.
- All recordings and chat transcript will be considered a public record.
- If you are not comfortable being recorded, please turn off your camera, keep your microphone muted, and refrain from chatting in the transcript box. Otherwise, you may choose to excuse yourself from the meeting.

## Important notes

- Your microphone and webcam are automatically disabled upon entering the meeting.
- The meeting will be open to questions and answers at the end of the presentation.

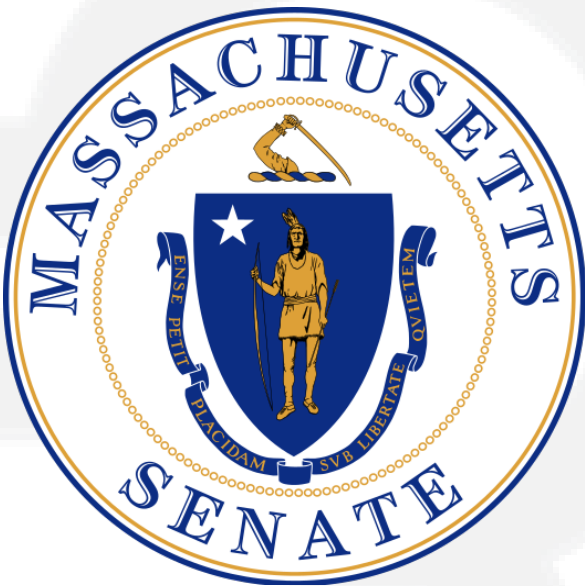
**All questions and comments are welcomed and appreciated, however we do request that you refrain from any disrespectful comments.**

# Agenda



- **Call to Order**
- **Introduction of Commission Members**
- **Presentation on Study**
  - **Background**
  - **Existing Conditions**
  - **Design Approaches**
  - **Planned Public Outreach**
  - **Schedule and Next Steps**
- **Open Floor for Discussion among Commission Members**
- **Public Comment Period**

# Commission Introductions



University of Massachusetts  
Building Authority

# Morrissey Boulevard Commission

- **Members:**

- Massachusetts State Senate, 1st Suffolk
- Massachusetts House of Representatives, 4th Suffolk
- Massachusetts House of Representatives, 13th Suffolk
- Massachusetts Department of Transportation (MassDOT)
- Massachusetts Executive Office of Energy and Environmental Affairs (EEA)
- City of Boston Mayor's Office
- Boston City Council, District 3
- Boston Planning & Development Agency (BPDA)
- University of Massachusetts Building Authority

- **Deliverables:**

- Recommended transportation and infrastructure improvements
- A comprehensive corridor plan
- Short-term investments

Reference: Enabling Legislation - <https://malegislature.gov/Laws/SessionLaws/Acts/2022/Chapter176>

Reference: Amended Legislation - <https://malegislature.gov/Laws/SessionLaws/Acts/2023/Chapter28>



# Commission Goals



Improve mobility for pedestrians, transit users, cyclists, and motorists



Strengthen climate resiliency in the Dorchester section of the city of Boston and along Morrissey Boulevard in the city



Develop a comprehensive plan and design concept alternatives for the Morrissey Boulevard corridor



Identify short-term investments to improve mobility for pedestrians, transit users, cyclists, and motorists along the Morrissey Boulevard corridor

# Study Team Introductions



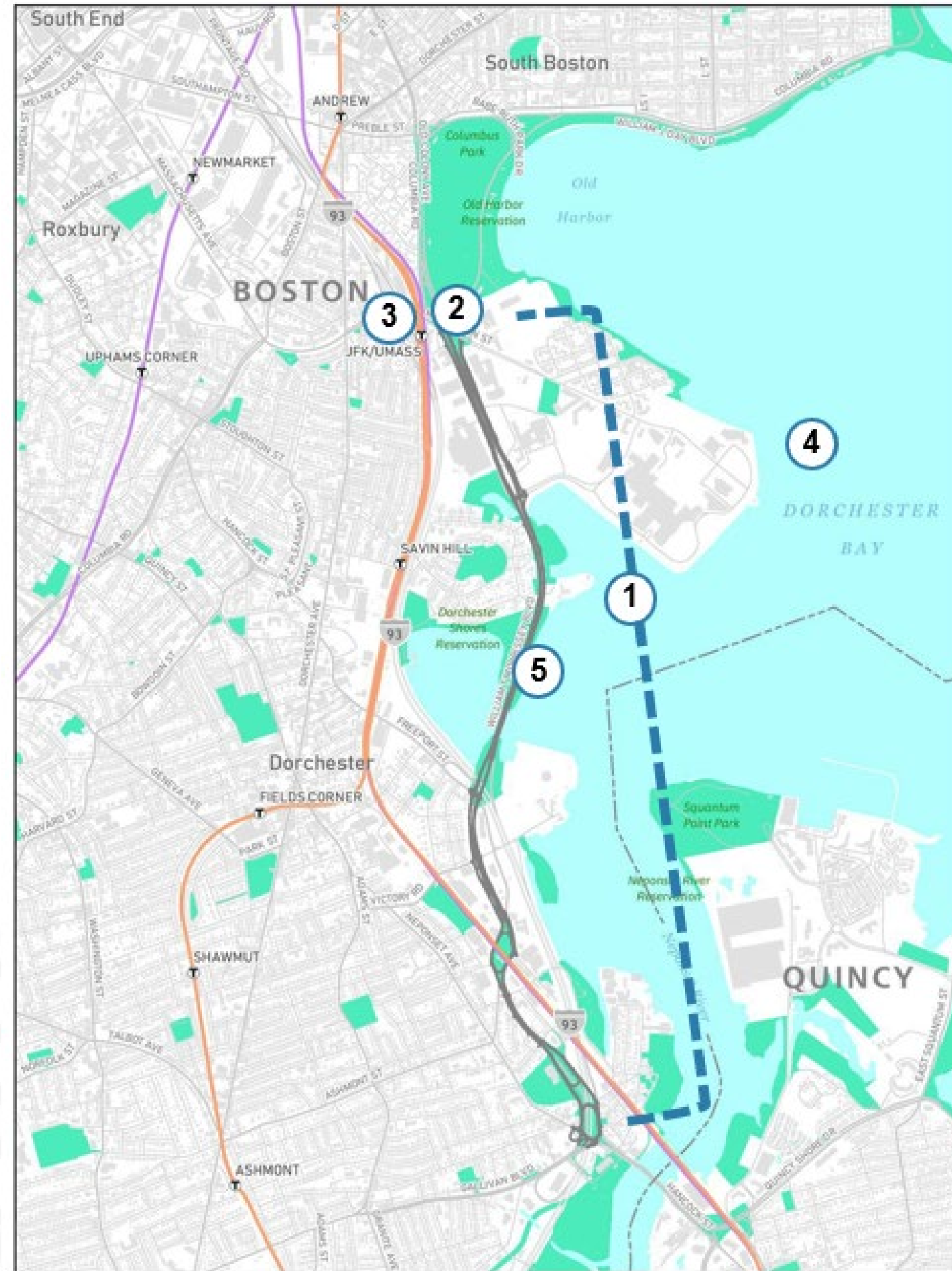




# Presentation on Study

# Background – Planning and Development Context

1. 2017 Department of Conservation and Recreation (DCR) Design
2. MassDOT Kosciuszko Circle/Columbia Road/I-93 Interchange project
3. Boston Transportation Department (BTD) JFK/UMass Station Access Study
4. Climate Ready Boston/Climate Ready Dorchester
5. MassDOT Beades Bridge Replacement





# Why Redesign Now?

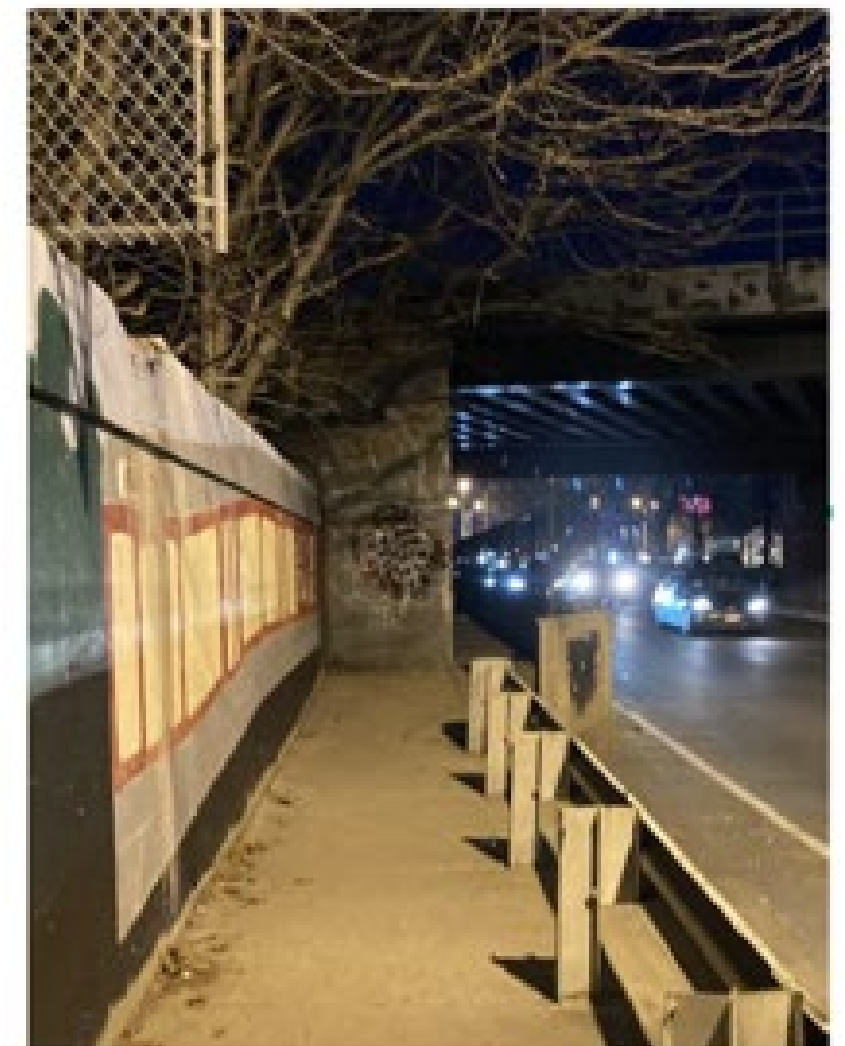
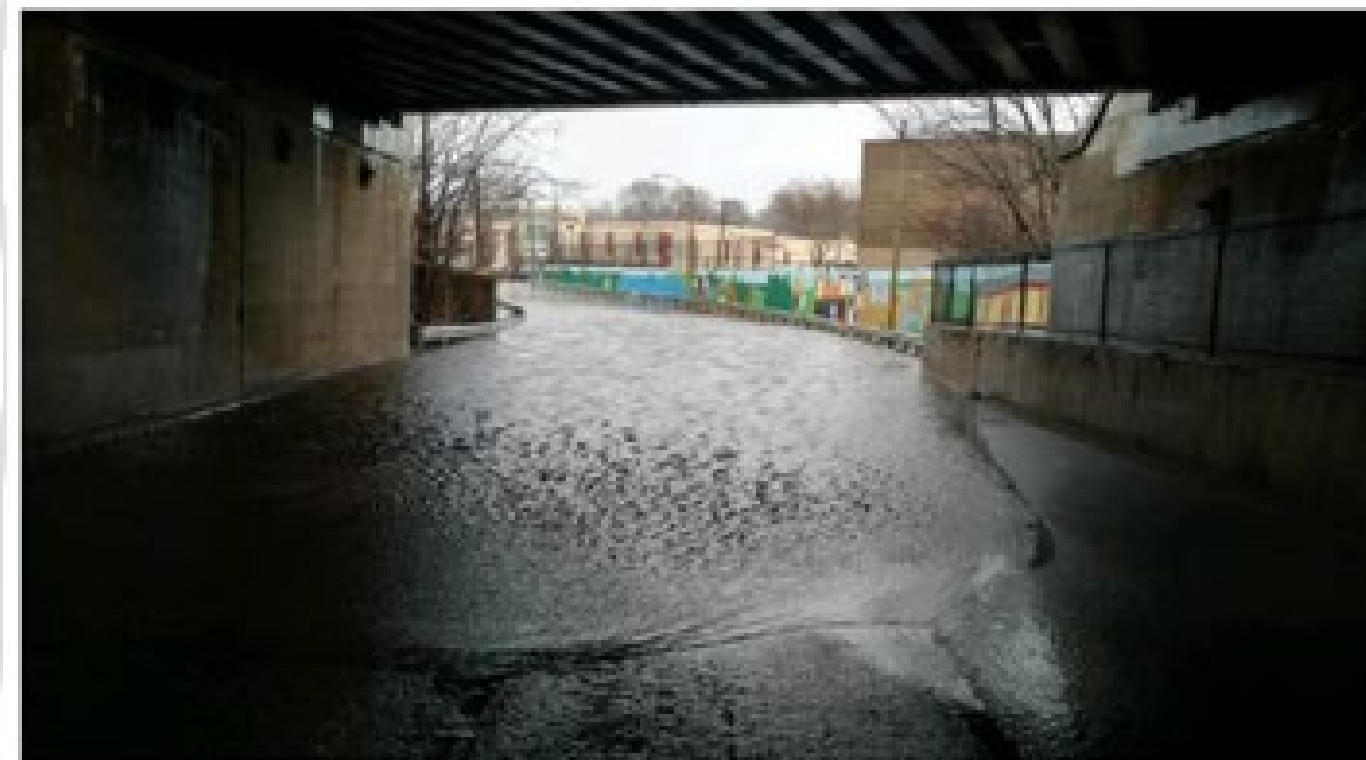


## Previous Efforts

- 2017 DCR Design
- Climate Ready Dorchester

## Now Responding To:

- Community stakeholders
- Development





# Background – Significant Development



- City of Boston Article 80 projects throughout study area
- Dorchester Bay City
  - Major mixed-use development on Columbia Point



Dorchester Bay City development project



# Study Scope



**Develop and analyze alternatives**



**Coordinate with Commission**

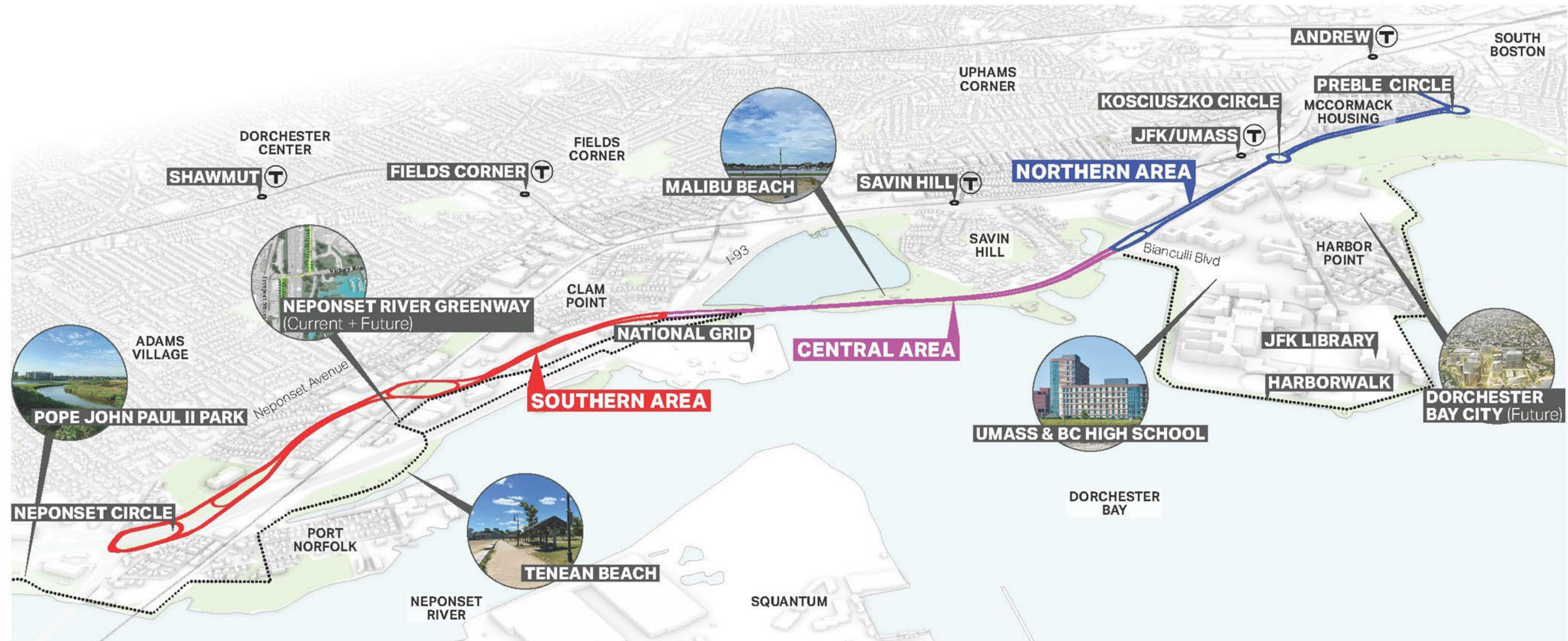


**Advance design concepts into project development**



**Advance goals of Climate Ready Boston, Go Boston 2030 and build off 2017 DCR Design**

# Corridor Sections



- Study area is approximately **3.5 miles** and broken into **3 distinct zones**
- **Northern Area** extends from Preble Circle to UMass Boston
- **Central Area** continues from the Bianculli Boulevard to Freeport Street
- **Southern Area** extends from Freeport Street to Neponset Circle



# Existing Conditions on Morrissey Boulevard



1. Significant **traffic congestion**
2. **High crash levels**
3. **Few safe bicycling and walking facilities**, though there is a strong demand for walking and bicycling
4. **Current and growing flood risk** from storms compounded by sea level rise





# Existing Conditions on Morrissey Boulevard



5. Vulnerability to **heat-related** climate change impacts
6. **Poor east-west connections** between Boston Harbor and communities inland
7. Diverse **environmental justice (EJ)** and **transit-dependent** communities
8. **Site of significant growth** from large developments, with the need to coordinate with other projects





# Goals for Design Approach



## CORRIDOR MOBILITY

Is the safety and connectivity of vehicular, pedestrian, and bicycle circulation networks improved? Are existing pedestrian connections to the waterfront enhanced and/or are new opportunities for waterfront access available?



## RESILIENCY AND ECOLOGY

Is flood risk effectively reduced in the near and long term? Are opportunities to improve shoreline ecology identified and incorporated into the resiliency approach?



## PLACEMAKING

Are visual and circulation impacts of the flood barrier system minimized, and are new waterfront recreation opportunities incorporated into the approach? Does the placemaking approach integrate with surrounding plans and developments and provide benefits to the surrounding community?

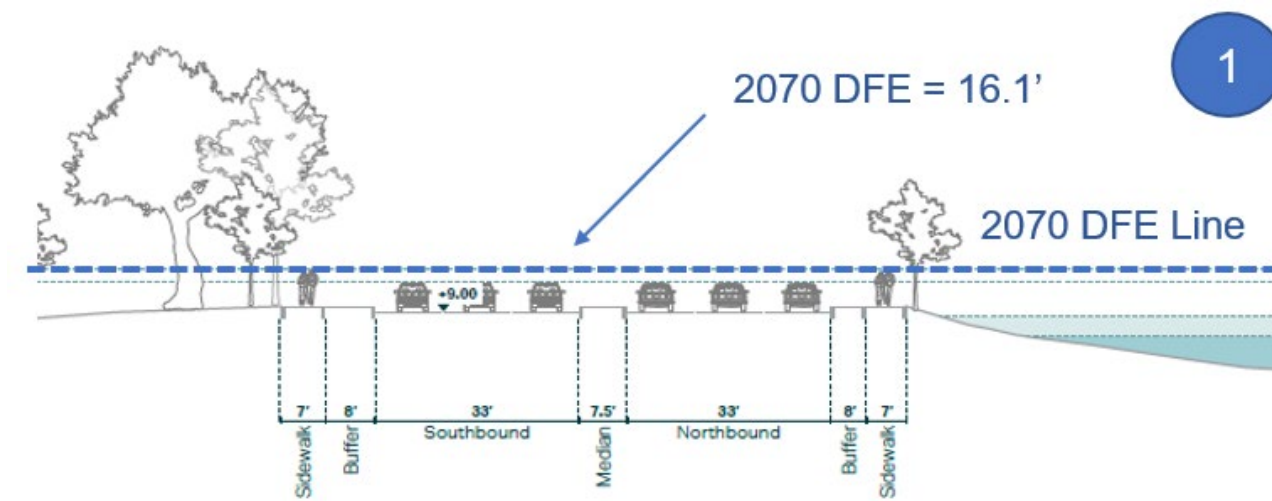


## CONSTRUCTABILITY

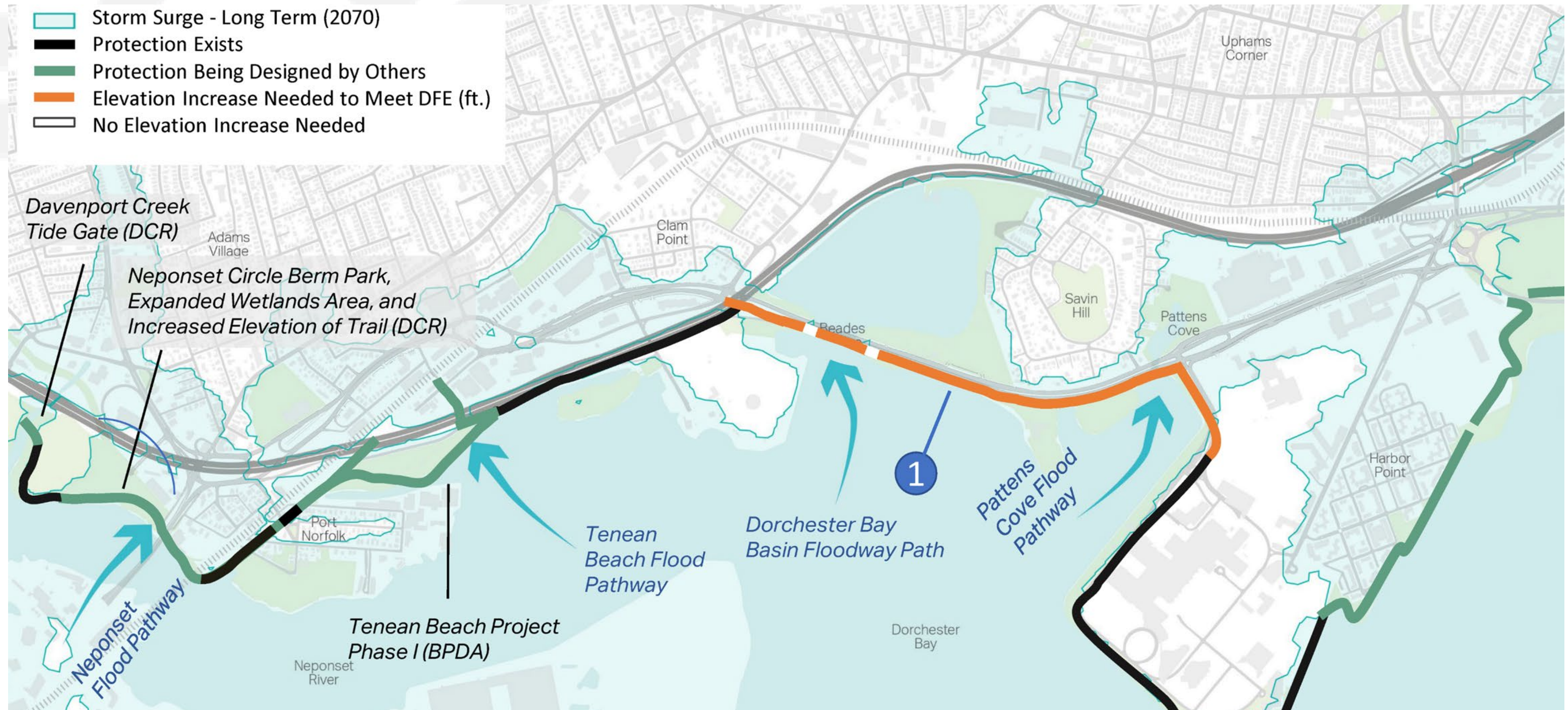
Does the approach minimize construction complexity, cost, and potential permitting/schedule impacts? How significant are the operations and maintenance requirements?



# Central Zone: Filling the Gaps



- Storm Surge - Long Term (2070)
- Protection Exists
- Protection Being Designed by Others
- Elevation Increase Needed to Meet DFE (ft.)
- No Elevation Increase Needed





# Central Zone: Resiliency Design Parameters



2070  
Design  
Flood  
Elevation

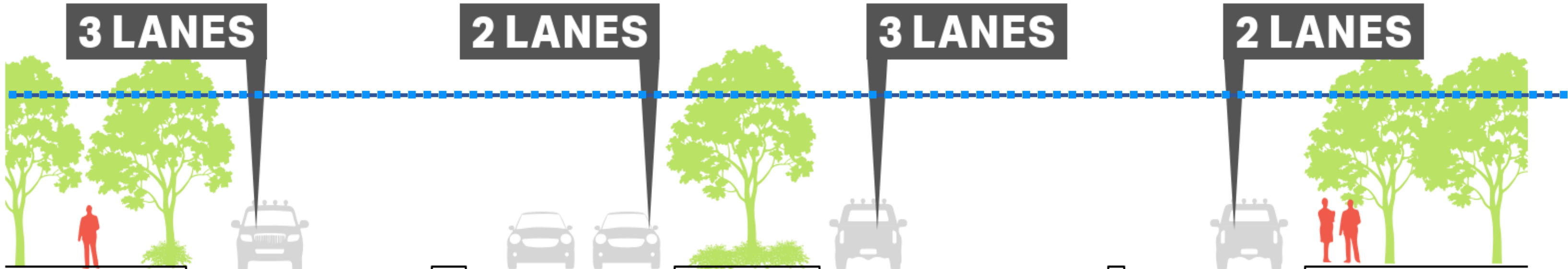


Image not to scale, for illustrative purposes only



Example Location:  
North of Bianculli  
Boulevard





## North and South Zone: Design Approach

### Placemaking

- Integration of public realm design elements that improve connectivity, safety, and comfort





## North and South Zone: Design Approach

### Infrastructure

- Integration of flood mitigation infrastructure into the public realm to capture stormwater runoff and improve ecology and connectivity.





## North and South Zone: Design Approach

### Environmental Mitigation

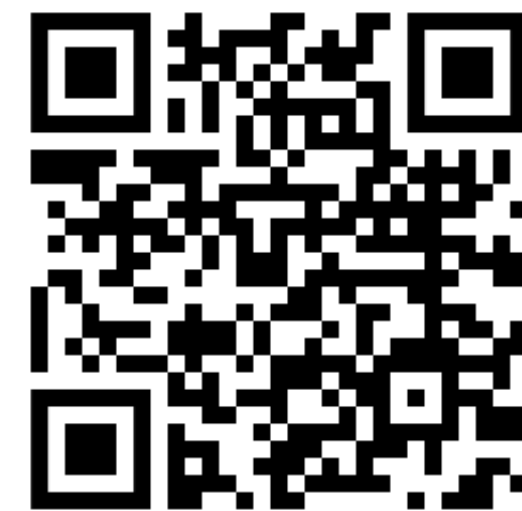
- Expanding green space to mitigate heat island effects, improve comfort and air quality, and help with stormwater runoff management.



# Planned Public Outreach



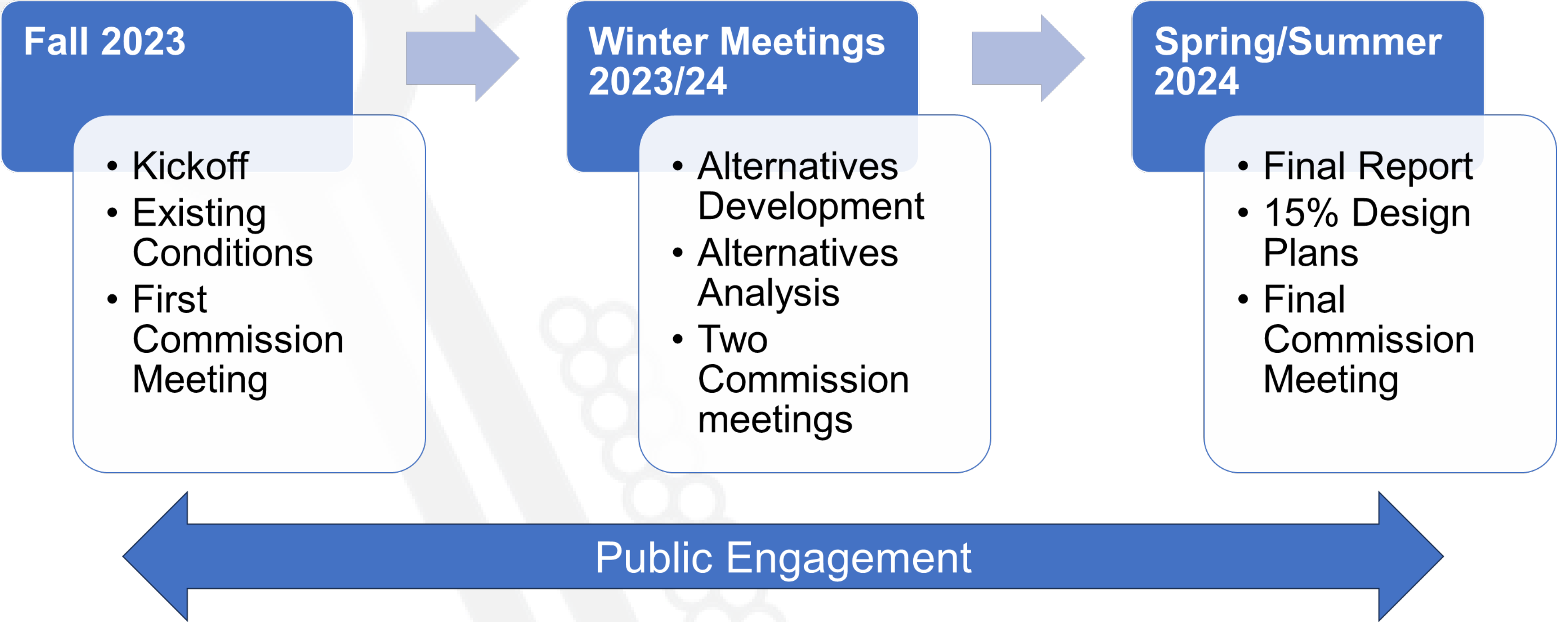
- **Public survey** at key project milestone
- **Digital and interactive materials** designed to engage and inform people of the effort, alternatives, and impacts
- Outreach activities to **maximize participation from seniors, the disability community, and Environmental Justice (EJ) communities**
- **Ensure language access**, in compliance with MassDOT's and Title VI's requirements
- **Email lists and engagement over social media platforms**
- **Webpage:** <https://www.mass.gov/k-circle-morrissey-study>
  - Will include a Commission subpage for web postings



Study Website  
QR Code



# Schedule







## Next Steps

### Commission Meeting #2 – Winter 2023/24

- Develop and present detailed alternatives
- Discuss Evaluation Criteria
- Gather feedback on alternatives development and analysis





# Commission Discussion





# Public Comment Period



# Share Your Questions and Comments: Hybrid Meeting Process



- In-Person and Virtual moderators will be working together to ensure that attendees in both spaces can share their questions and comments
- Moderators will take a few comments at a time in one space and then switch throughout the public comment period
- If multiple people ask the same question, moderators will inform the audience how many asked and answer the question once

**Please be advised that all Q&A and comments are subject to disclosure for public records, therefore use these functions for project-related business only.**



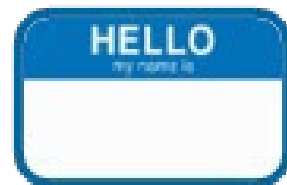
# Share Your Questions and Comments: Virtual Attendees



- Submit your questions and comments using the Q&A button (Alt+H)



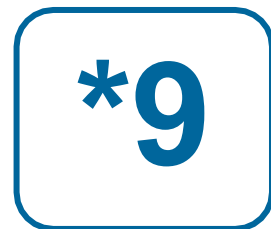
- “Raise your hand” to be unmuted for verbal questions, (Alt + Y to raise your hand)



- Please state your name before your question



- Please share only **1** question or comment at a time, limited to **2** minutes, to allow others to participate.



- To ask a question via phone, dial \*9 and the moderator will call out the last 4-digits of your phone number and unmute your audio when it is your turn.

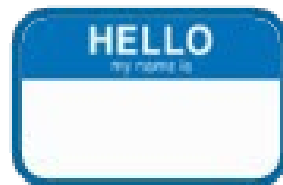
Please be advised that all Q&A and comments are subject to disclosure for public records, therefore use these functions for project-related business only.



# Share Your Questions and Comments: In-Person Attendees



- Use Microphone provided and please line up three (3) at a time to allow for virtual audience to participate



- Please state your name before your question or comment



- Please share only **1** question or comment at a time, limited to **2** minutes, to allow others to participate.

Please be advised that all Q&A and comments are subject to disclosure  
for public records





# How to Reach Us

**Submit written comments to:**

Attention: Office of Transportation Planning  
10 Park Plaza, Suite 4150  
Boston, MA 02116

**Submit email comments to:**

[planning@dot.state.ma.us](mailto:planning@dot.state.ma.us)

**For project information, visit the study web site at:**

<https://www.mass.gov/k-circle-morrissey-study> or QR Code:



Study Website  
QR Code





Thank You!