

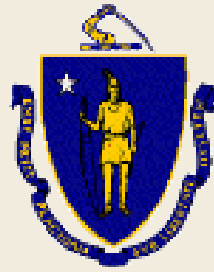


Mount Auburn Street Corridor Study



June 1, 2016
Shady Hill School Gym





Commonwealth of Massachusetts

Governor
Charles D. Baker

Lieutenant Governor
Karyn E. Polito

Energy and Environmental Secretary
Matthew A. Beaton

Department of Conservation and Recreation Commissioner
Leo P. Roy



DCR Mission Statement

*To protect, promote and enhance our
common wealth of natural, cultural
and recreational resources
for the well-being of all.*

Agenda

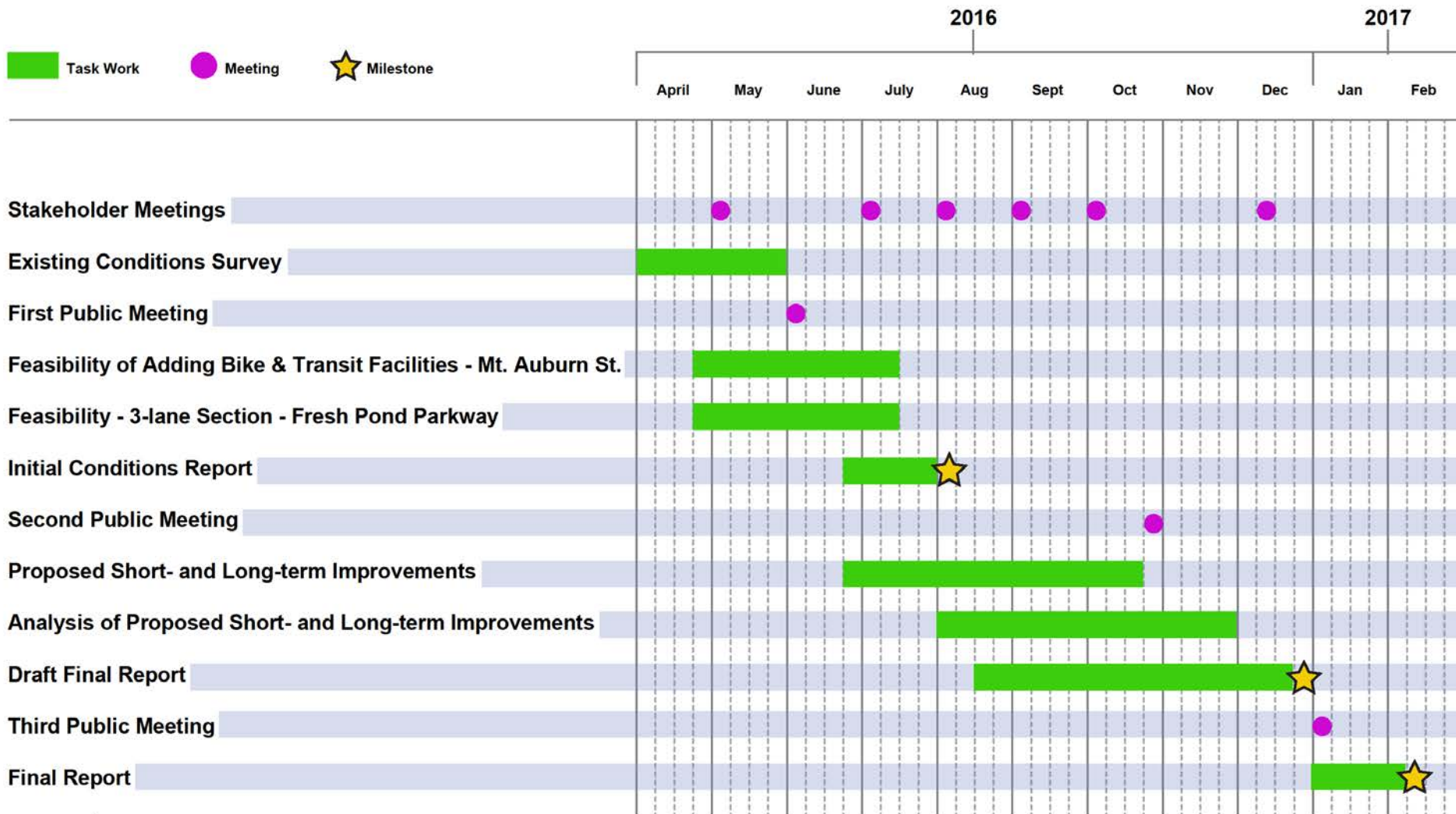
- Team Introductions
- Project Timeline
- Public Process Overview
- Stakeholder Group Formation
- Quick History Lesson
- Previous & Current Planning Work
- Work Accomplished So Far
- Existing Conditions: Break Out Sessions
- Next Steps

Introductions

- DCR Team
- Consultant Team
- Facilitators
- Stakeholder Group Members and Affiliation



Schedule

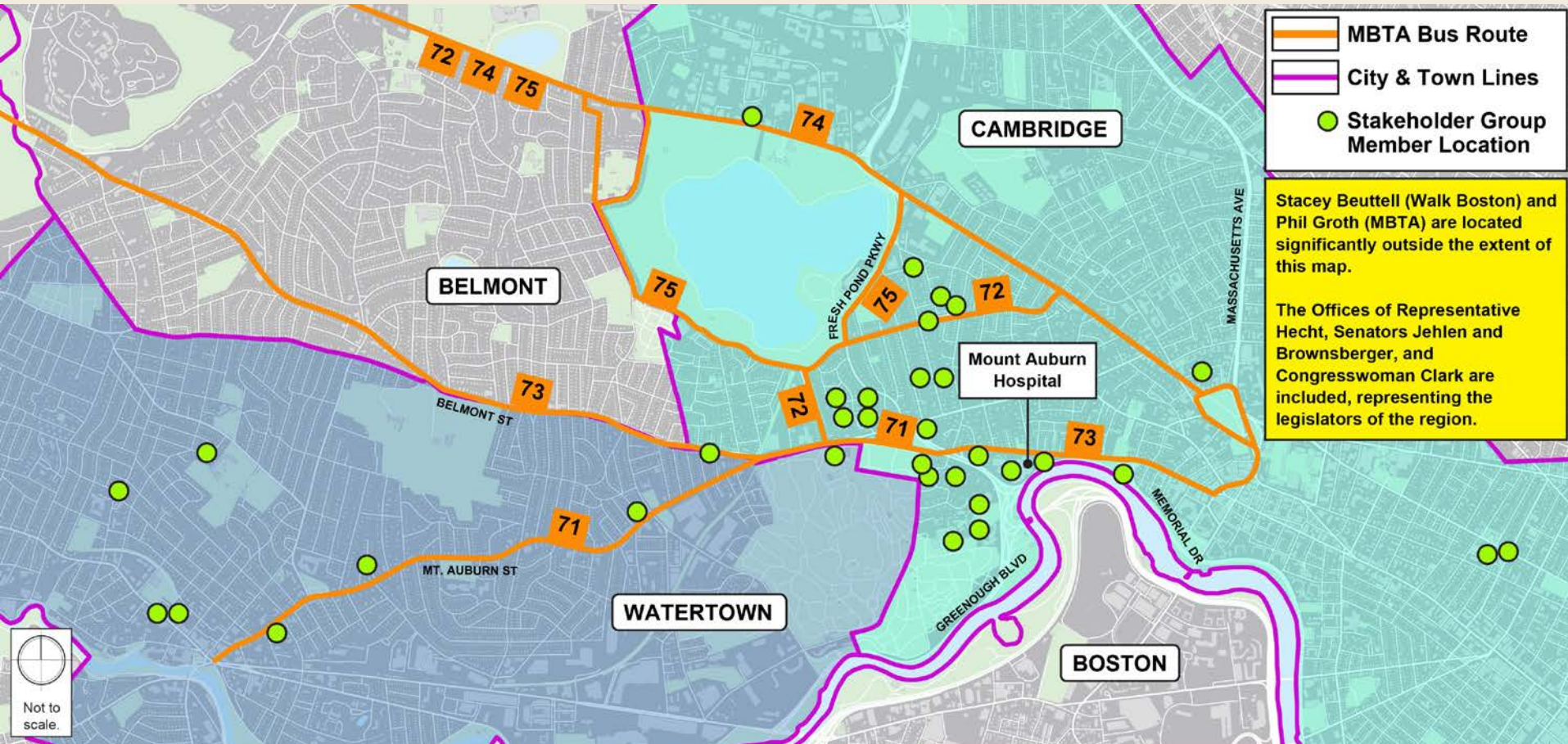


Public Process Overview

- Public Meetings: allow the public at large an opportunity to voice their ideas and concerns as the study progresses
- Stakeholder Group: meeting monthly to advise DCR on neighborhood's goals and desires.
- Wikimap: a means for feedback from folks that can't attend meetings
- DCR balances your input with:
 - Environmental Review
 - Historic status
 - Funding Requirements
 - Regional Needs
- More Productive = More Influence



Stakeholder Group Formation



Super Quick History

1630 “Way from Charlestown to Watertown”

1812 Brattle Street laid out

1831 Mt Auburn Cemetery built

1871 Mt Auburn Hospital founded

1889 Brattle St. widened to 60 feet

1899 Fresh Pond Pkwy built, Mt. Auburn to Fresh Pond

1890s Streetcar lines open (later known as 71 & 73)

1915 Larchwood Neighborhood built

1920s Coolidge Hill Neighborhood built

1929 FP Pkwy to Concord Ave. & Alewife Brook Pkwy

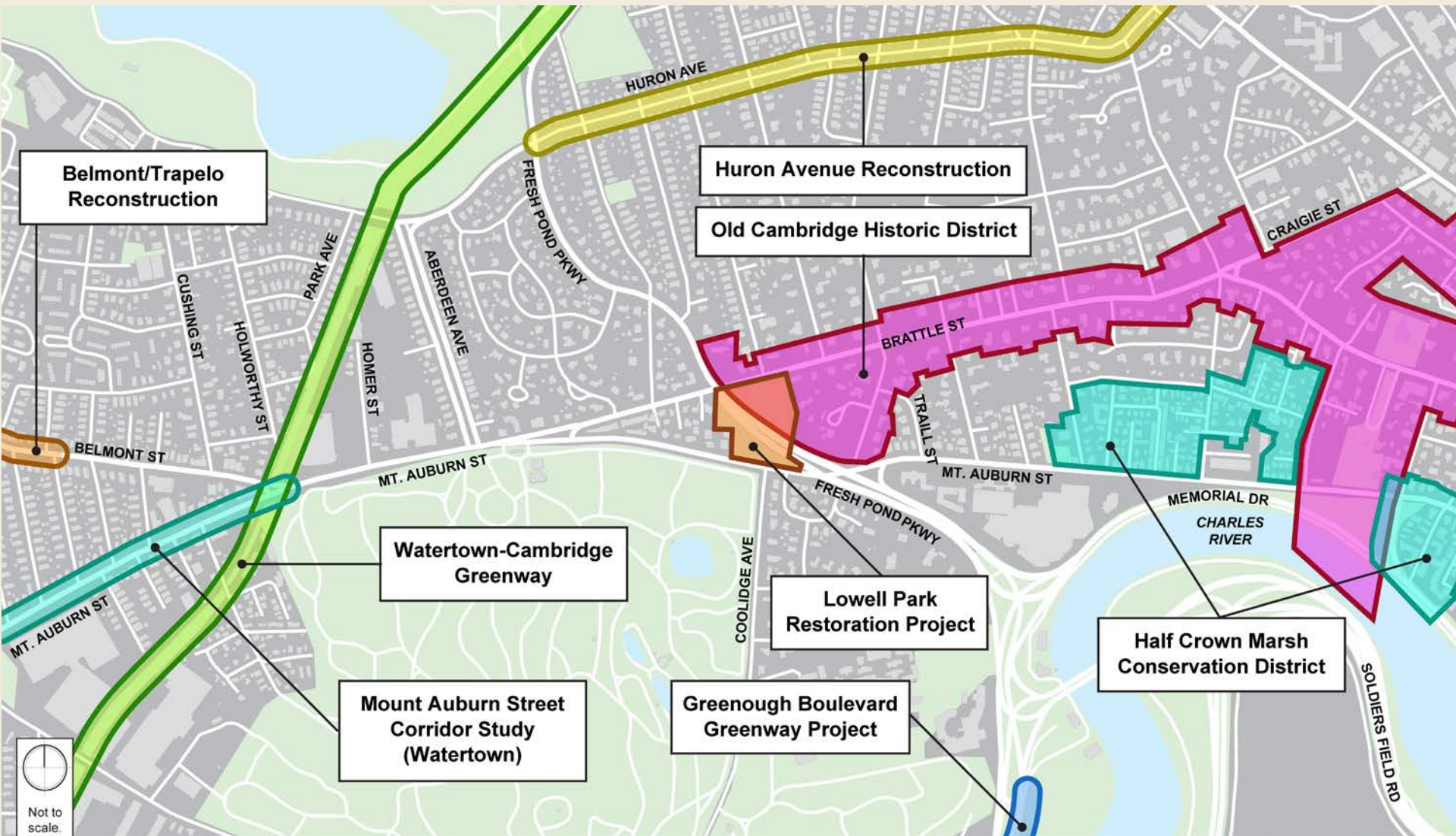
1934 Route 2 “Concord Turnpike” built

1950s Gerry’s Landing and Eliot Bridge built

2010s Mt. Auburn Street “traffic calmed”



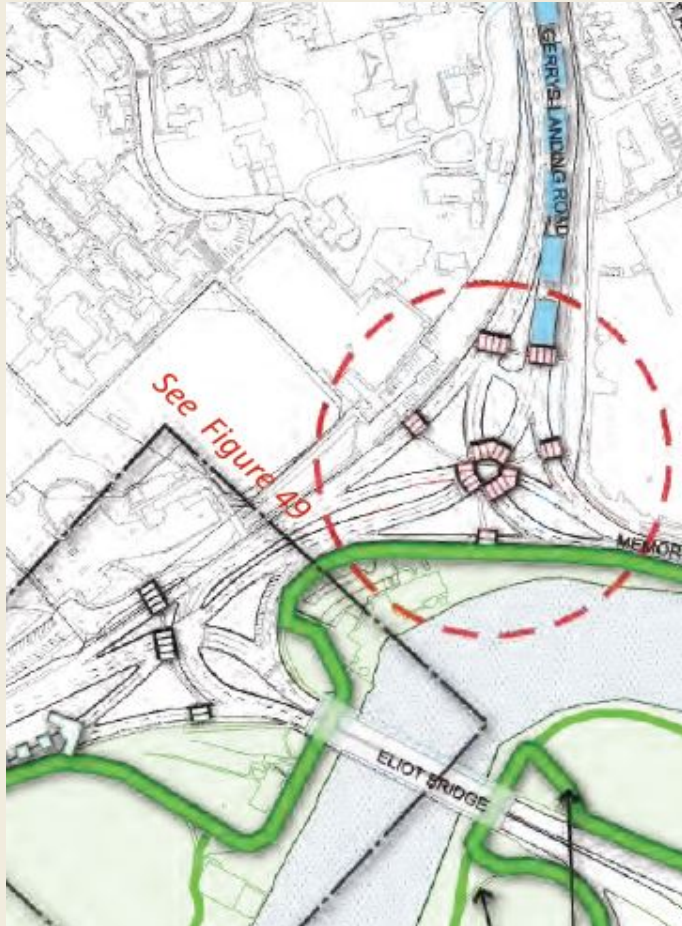
Local Area Projects



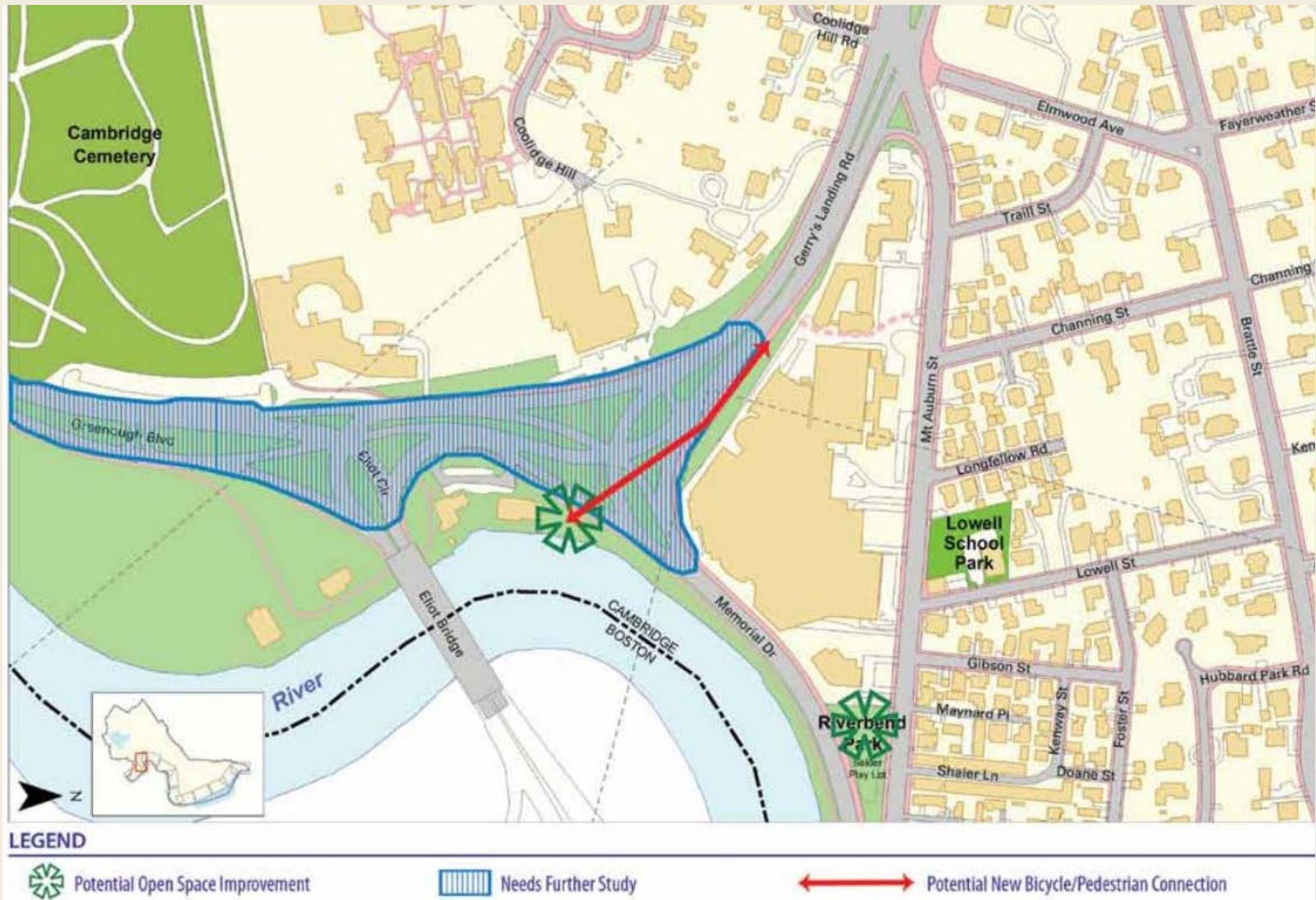
Previous and Current Planning Work

DCR Parkway Study (Now)	DCR Charles River Connectivity Study (2014)	DCR Lowell Memorial Park Cultural Landscape Report (2014)	MBTA Focus 40 (Now)	MBTA Key Bus Route Improvement Program (2013)
Envision Cambridge (Now)	Cambridge Transit Strategic Plan (Interim 2014 & Now)	Cambridge Bicycle Plan (2015)	Cambridge Riverfront Plan (2011)	Cambridge Pedestrian Plan (2000)
West Cambridge Neighborhood Study (2007)	Strawberry Hill Neighborhood Plan (2007)	Watertown Comprehensive Plan (2013)	Watertown Bicycle Transportation Plan (2003)	

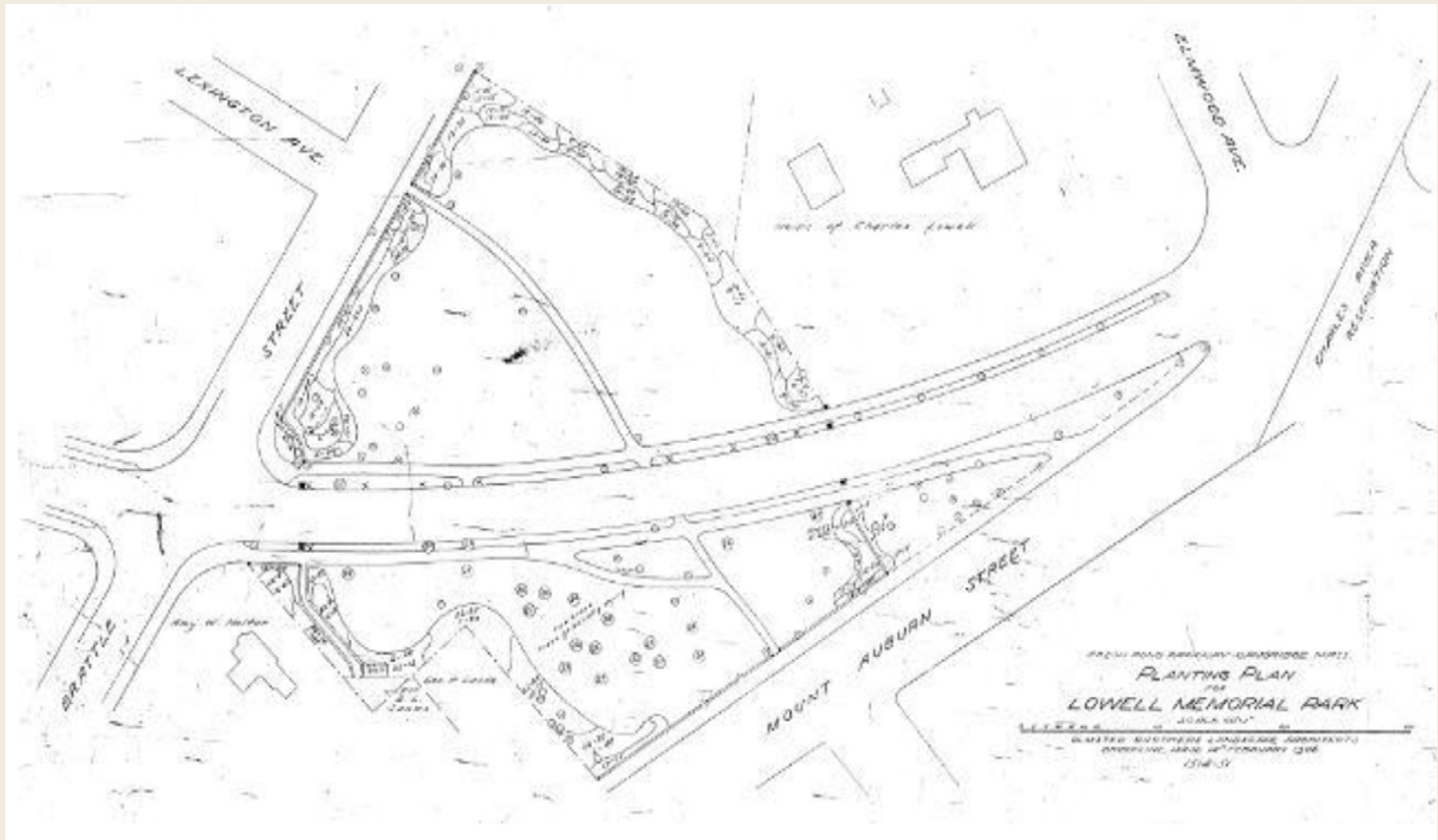
Charles River Connectivity Study (2014)



Cambridge Riverfront Plan (2011)



Lowell Park Cultural Landscape Report (2014)



MBTA Key Bus Route Improvement Program (2013)

- Lengthens bus stops to 100'.
- Slight sign relocation for WB stop at Aberdeen.
- Does not address delays from bus pullouts.
- Cites legal mandate to open bus doors at curb.



Cambridge Transit Strategic Plan (Interim 2014)

- 71 Bus fails the MBTA's "Vehicle Load Standard" (excessive crowding at peak).
- Goal 3: Make transit travel times equal to or quicker than driving travel times.
- Calls for bus-priority pilot projects and signal progression.



Cambridge Bicycle Plan (2015)



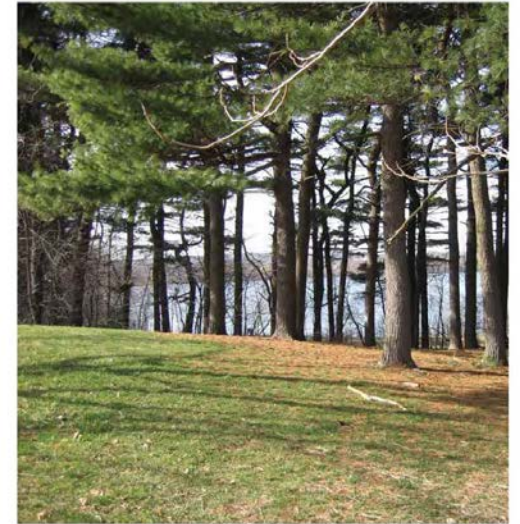
Strawberry Hill Neighborhood Plan (2007 update)

- Identifies Belmont and Holworthy intersection as a “gateway” that needs to be made “more attractive.”
- Requests improved signal timing for pedestrians at Belmont and Mount Auburn intersection.

Strawberry Hill Neighborhood Study

■ ■ U P D A T E ■ ■

Summary, Recommendations and Action Plan



City of Cambridge ■ Community Development Department

Winter 2007

Watertown Bicycle Transportation Plan (2003)

- Recommends 4-2 Road Diet for Mount Auburn Street to add bikeways.

BICYCLE TRANSPORTATION PLAN
TOWN OF WATERTOWN

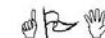
WATERTOWN BICYCLE COMMITTEE

July 18, 2003

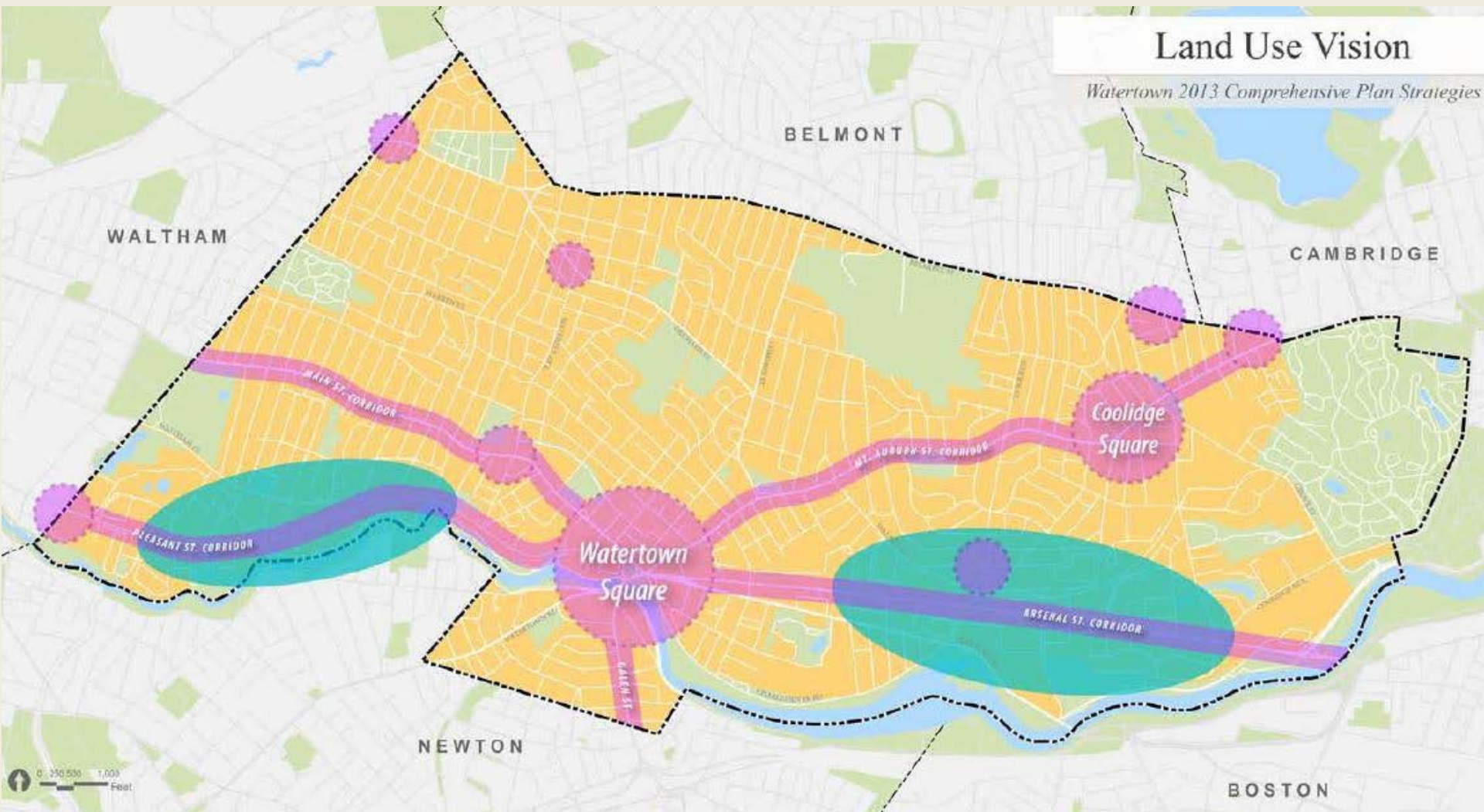


Prepared by:

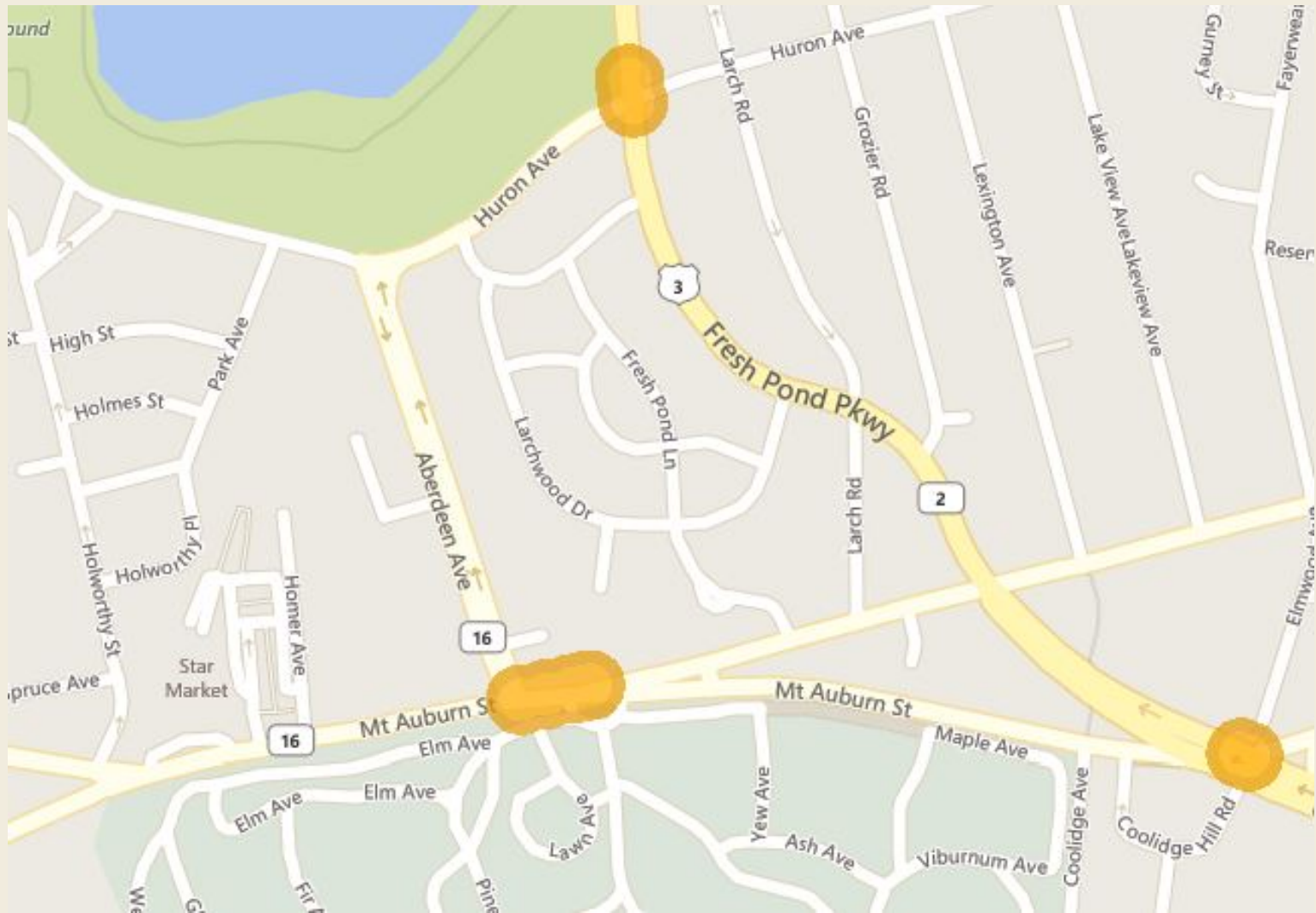
GREENMAN-PEDERSEN, INC.
28 Lord Road, Suite 280
Marlborough, MA 01752



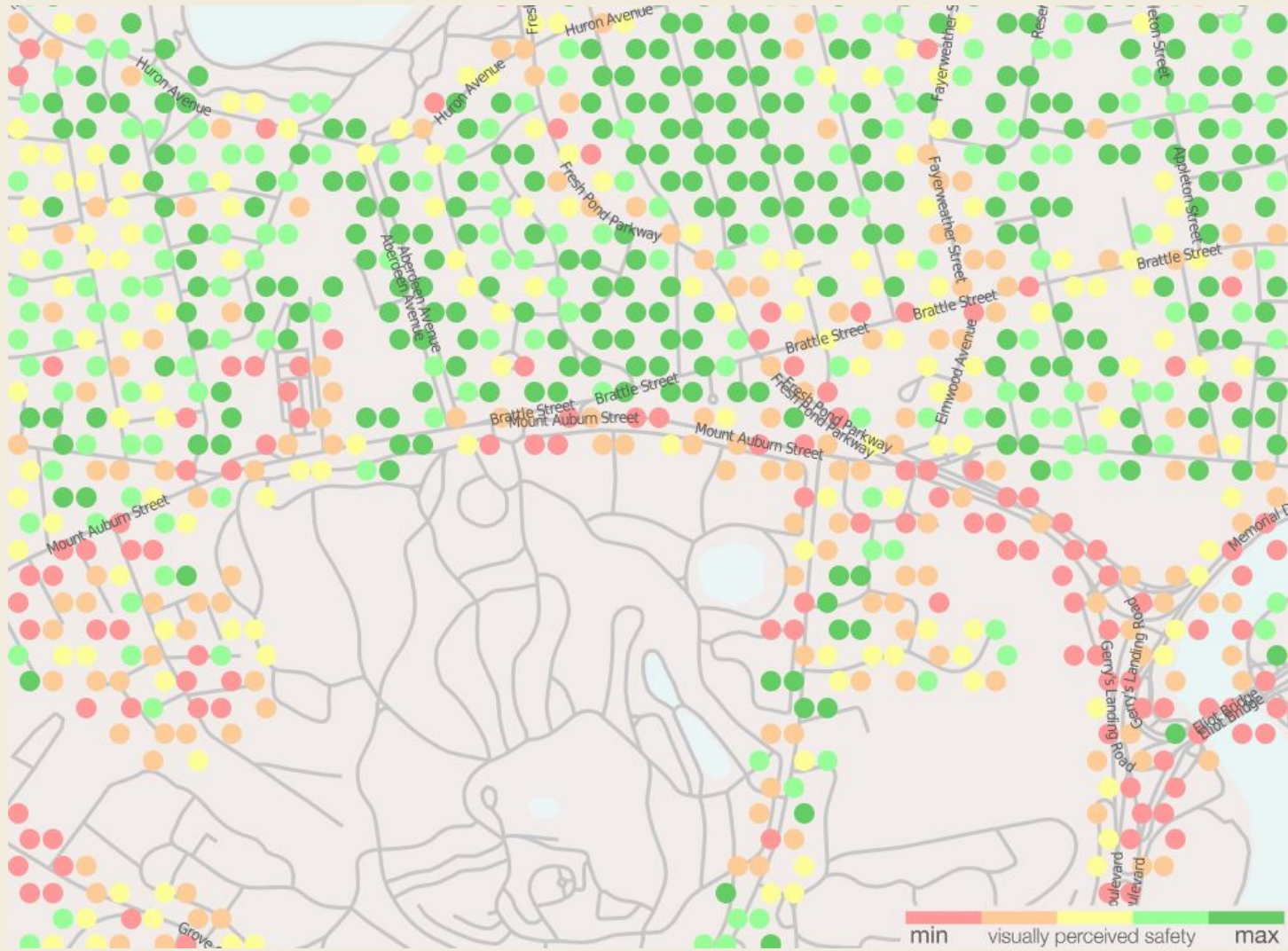
Watertown Comprehensive Plan (2013)



Highway Safety Imp. Program Crash Clusters (2011-13)



Streetscore Visually Perceived Safety Map (2016)



What's Happened So Far:

- Walk Through with DCR staff, Municipalities, MBTA - *April*
- Kick-Off Stakeholder Group Meeting – *May*
- Existing Conditions Inventory – *Ongoing*
- Wikimap live and gathering feedback



Walk Through Highlights – April 14, 2016

- Challenging bike maneuvers at Belmont, Brattle
- Illegal left turns into Star Market Parking Lot.
- Opportunities for place-making near Star Market and at Brattle.
- Danger for peds and bikes at Fresh Pond Parkway. Signal Cycle and geometry of intersection are inefficient, which is creating bus delay.
- Poor sidewalk conditions in several areas.
- BB&N student pickup creates high afternoon parking demand and some congestion. Large numbers of students are crossing Fresh Pond and facing significant delays.

Web Mapping Tool



MOUNT AUBURN STREET TRANSPORTATION STUDY



Where would you improve transportation on Mount Auburn Street?

Click **ADD POINTS** to add to the map.

ADD AS MANY POINTS AS YOU WOULD LIKE



ADA



Bicyclist



Driver



Local Business Owner



Pedestrian



Transit Rider

Mt Auburn Street Corridor Study

About & Help ▾

ADD POINTS

<http://wikimapping.com/wikimap/mtauburn.html>



Mount Auburn Street Corridor Study



Breakout Sessions

Goals:

- Identify problems.
- Capture your ideas.

Topic areas:

- Walking/ADA
- Bicycling
- Transit
- Driving
- Neighborhood Environment and Local Businesses

Key Themes We've Heard So Far:

- Improved safety for all modes
- Both short term (low cost) fixes and long term projects
- Improved transit operation through the corridor
- Improved bike and pedestrian infrastructure, connecting neighborhoods, regional institutions, and the Charles River
- Calm, predictable traffic to reduce neighborhood cut through and cyclist and pedestrian stress and increase motorist compliance
- Increased clarity for all modes
- Increased local business accessibility
- Opportunities for place-making
- ***We want more details!***

Next Steps

- Next Stakeholder Group Meeting – Late June/Early July
 - Discussion of shared goals, and potential feasibility of road diets
 - *All are welcome, but space is limited*
- Initial Conditions Report – August
- Next Public Meeting – October
 - Discussion of proposed long and short term improvements



For More Information

- **For more information:**
 - www.mass.gov/dcr/mt-auburn-corridor-study
- **If you have comments or suggestions on this project:**
 - *Submit online:*
 - <http://www.mass.gov/eea/agencies/dcr/public-outreach/submit-public-comments/>
 - *Write:* Department of Conservation and Recreation
Office of Public Outreach
251 Causeway Street, Suite 600
Boston, MA 02114
 - *Deadline (pertaining to this meeting): Wednesday, 6/15/16*
 - *Note: Public comments submitted to DCR may be posted on the DCR website in their entirety.*
 - Project Wikimap: www.wikimapping.com/wikimap/mtauburn.html
 - If you have questions, please email: MaryCatherine.McLean@massmail.state.ma.us