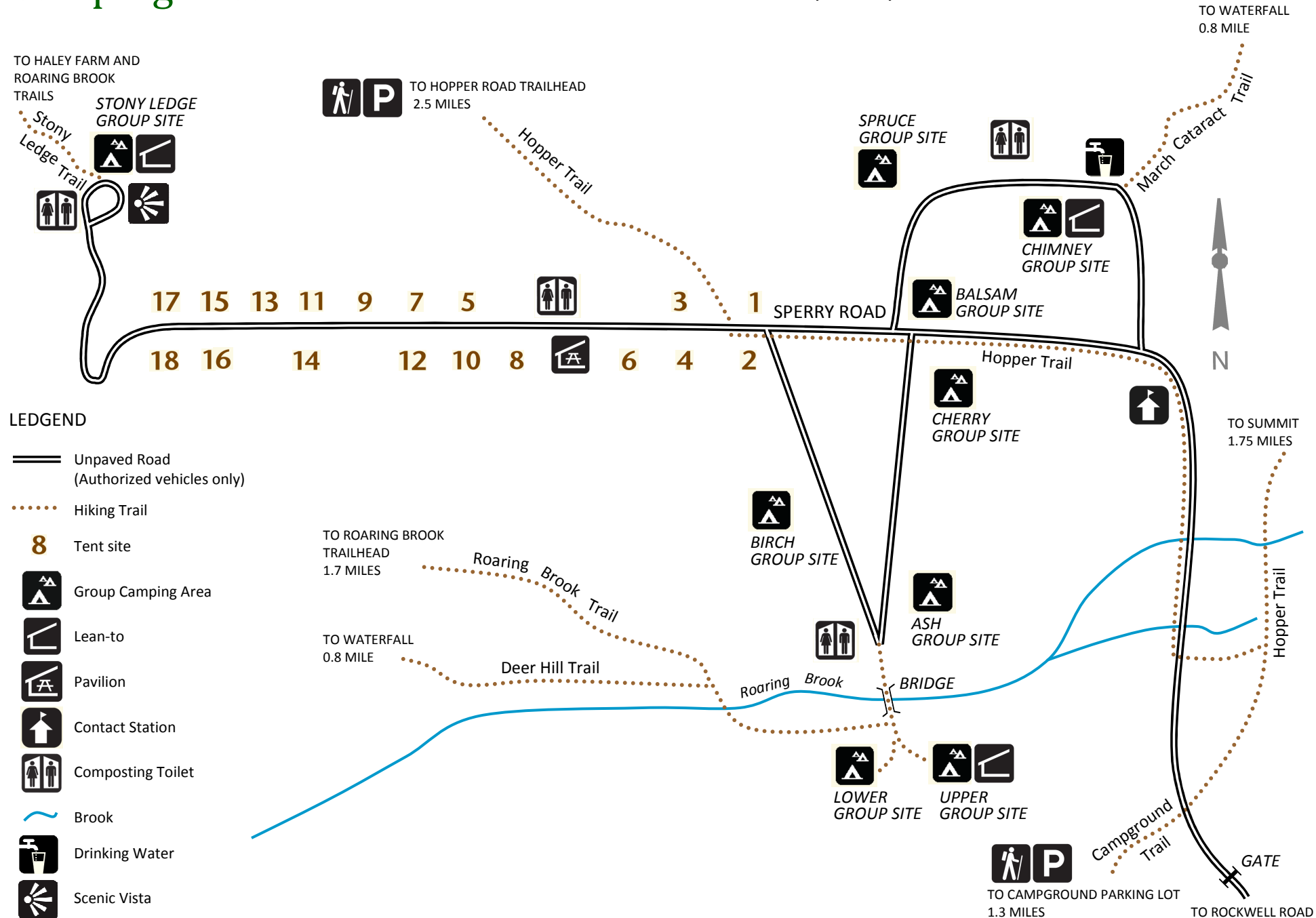


# Mount Greylock State Reservation

## Camping Area

We ask all campers to please carry in-carry out all rubbish.



### Protect Your Forests and Parks! PLEASE DO NOT TRANSPORT FIREWOOD

Transportation of any firewood, pallets or scrap wood into or out of MA State Park campgrounds is strictly prohibited, and may result in eviction substantial fine or both.

#### OBTAIN YOUR FIREWOOD AT THE CAMPGROUND ONLY

Thank you for your help in protecting your state forests and parks from invasive pests. Please report observations of any of the following:

#### EMERALD ASH BORER

Recently discovered in Massachusetts. Devastates ash tree species. A bright metallic green beetle, 0.5 inches-long, with flattened back. Larvae of beetle within ash trees do the damage.

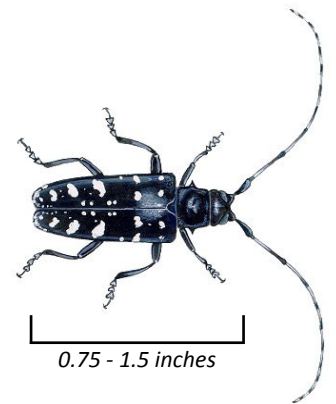


0.5 inches

**Signs:** ash tree canopy die-back, bark splitting, D-shaped exit holes and increased woodpecker activity and damage.

#### ASIAN LONG-HORNED BEETLE

Recently discovered in the Worcester, MA area. Devastates maple, willow and elm trees. Adult beetle has long antennae, white spots and light blue legs.



0.75 - 1.5 inches

**Signs:** dime-sized oval grooves in bark. 3/8" or larger round exit holes, sawdust or frass may appear on ground or branches. Severe infestation has exposed wood where larval tunneling is visible.