

# Massachusetts Mouth of Coastal River Maps

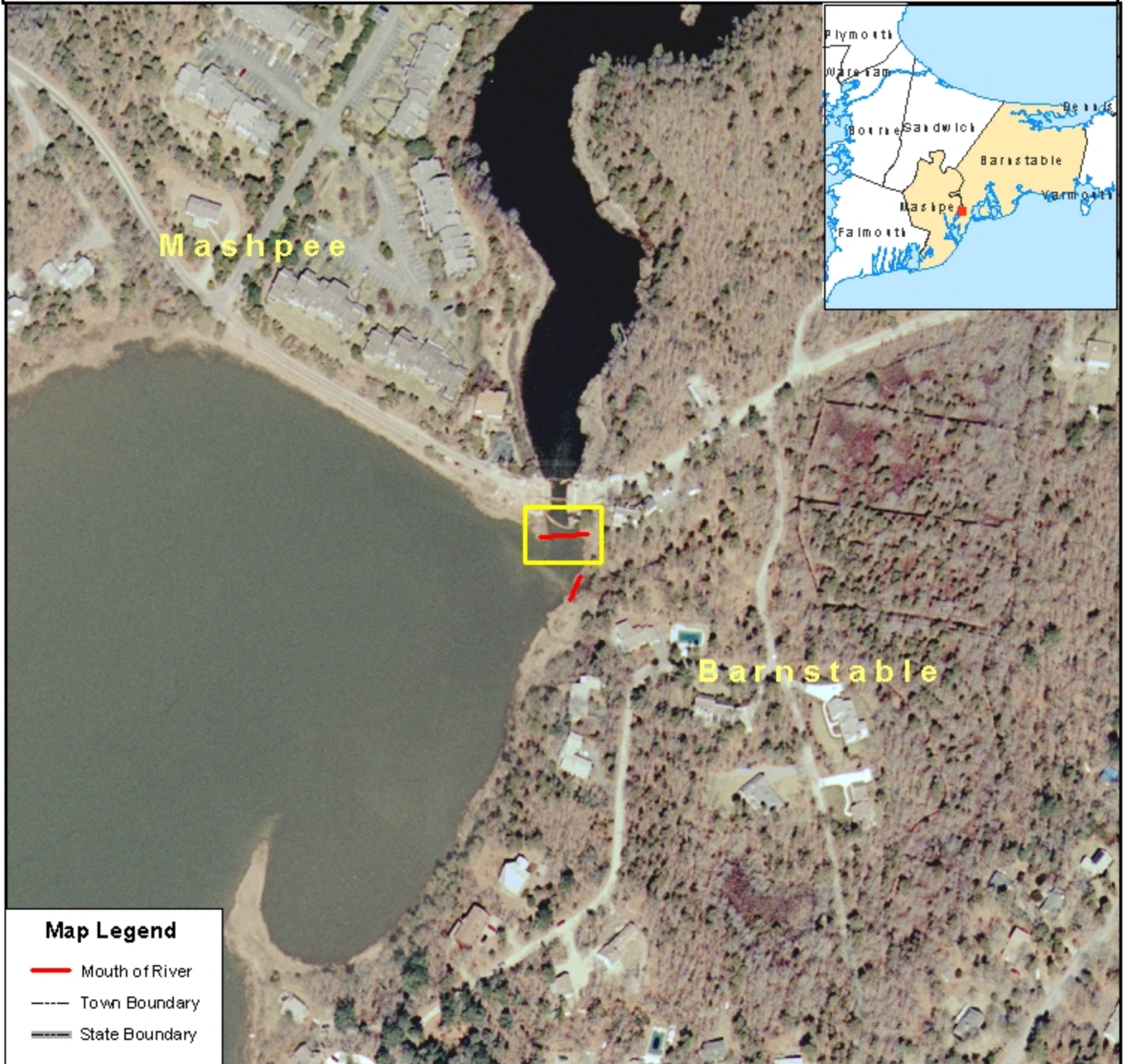
M.G.L. c.131, s.40

Town: BARNSTABLE / MASHPEE 310 CMR 10.58

River: SANTUIT RIVER

March 1, 2005

ID: BARNSTABLE-MASHPEE MOR-1



## Map Legend

- Mouth of River
- Town Boundary
- State Boundary



Mitt Romney, Governor  
Ellen Roy Herzfelder, Secretary  
*Executive Office of Environmental Affairs*

1:3,000  
0 100 200 400 600 Feet  
1 inch equals 250 feet

Mouth of River lines delineated  
by DEP Wetlands Program.

Color OrthoPhoto base map from  
MassGIS, 2001-2003.

Mass DEP GIS Program