

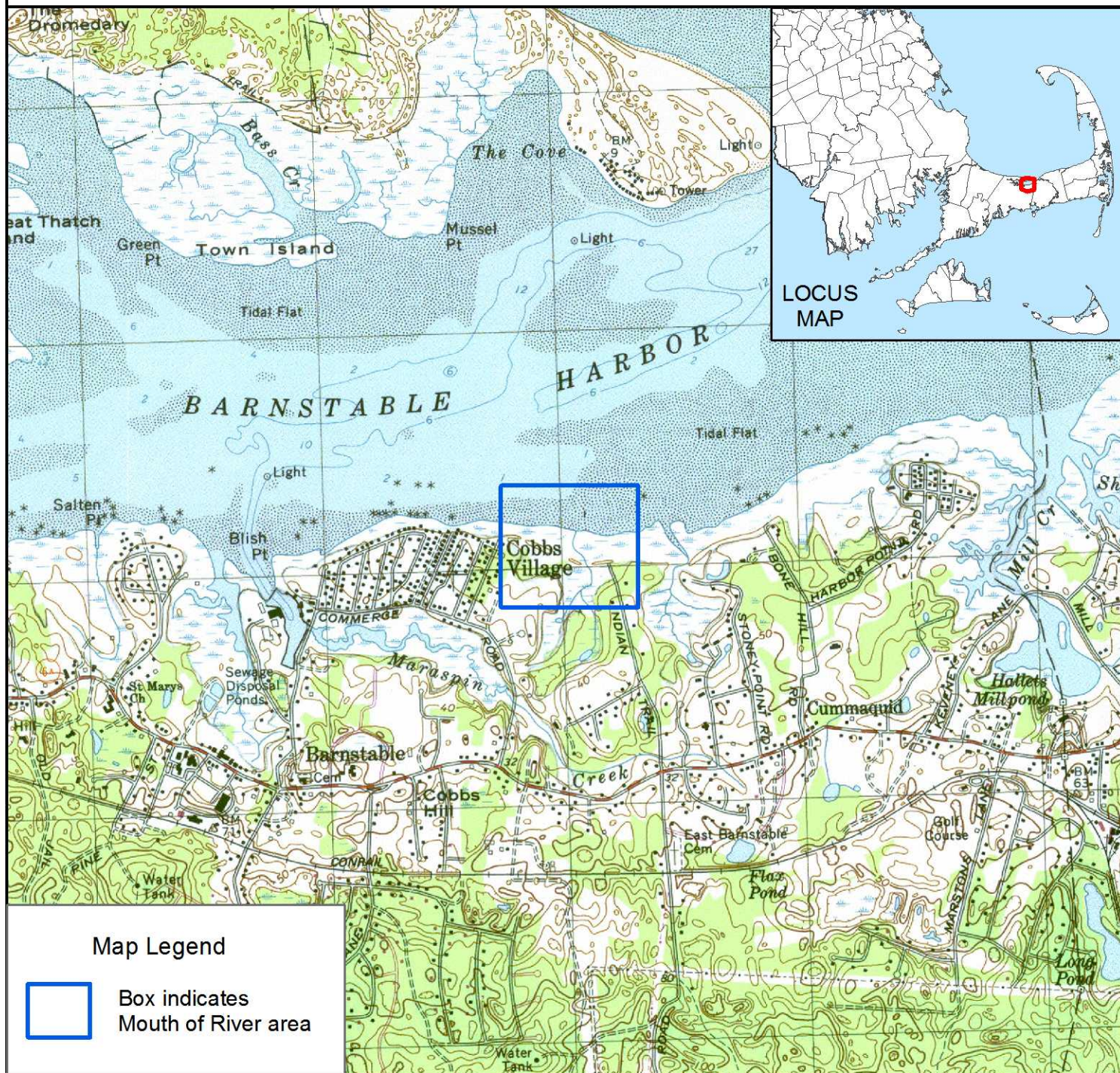
Massachusetts
Mouth of Coastal River Maps
M.G.L. c.131, s.40
310 CMR 10.58

M.G.L. c.131, s.40
310 CMR 10.58



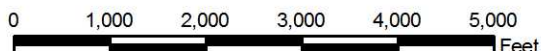
River: UNNAMED

ID: BARNSTABLE MOR-24



Mitt Romney, Governor
Robert Gollidge, Secretary
EXECUTIVE OFFICE OF ENVIRONMENTAL AFFAIRS

1:24,000



1 inch equals 2,000 feet

Mouth of River lines delineated
by DEP Wetlands Program.

Scanned USGS topographic quad maps from MassGIS, 1967-1990.

Mass DEP GIS Program