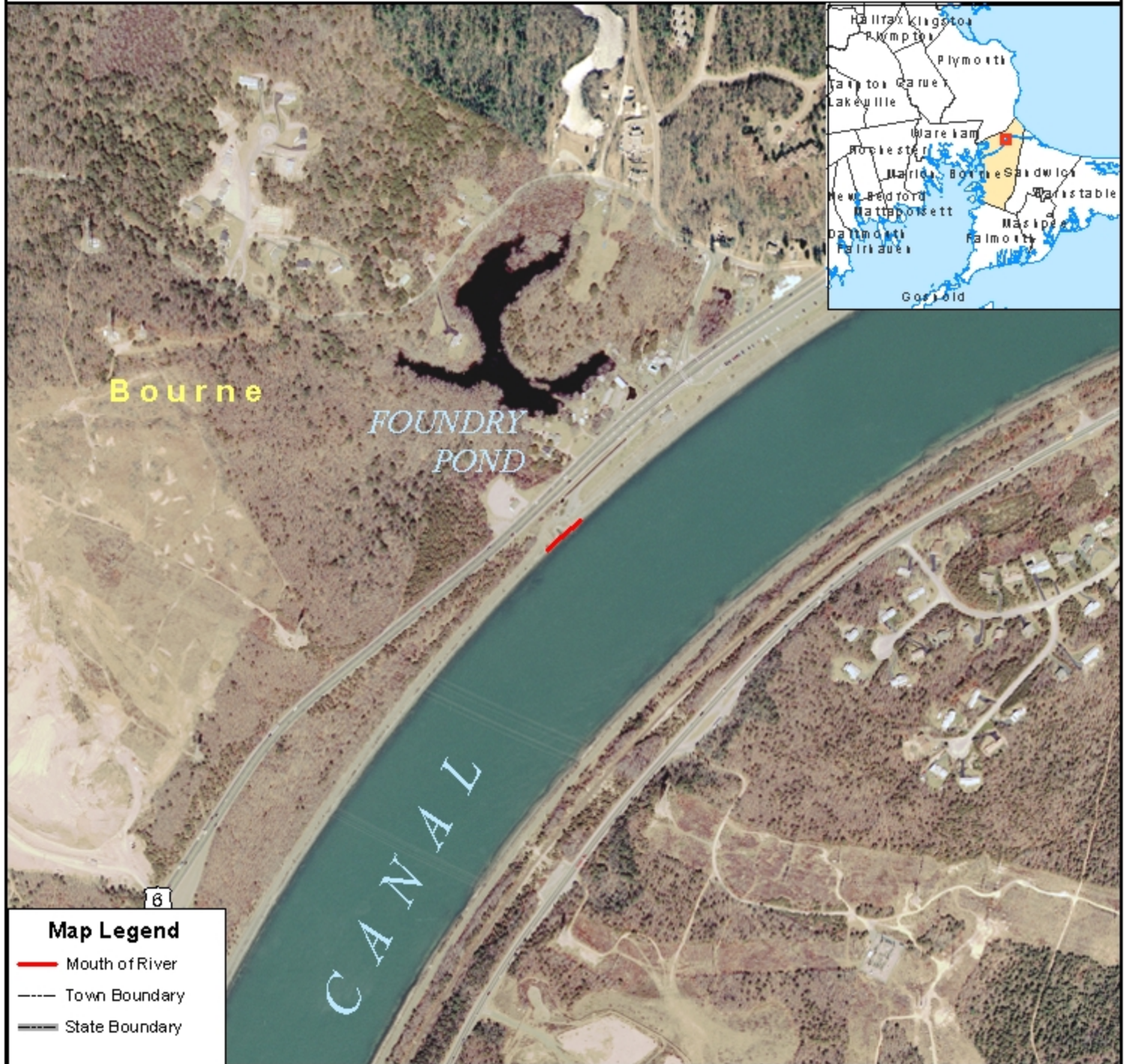


Massachusetts
Mouth of Coastal River Maps
M.G.L. c.131, s.40
310 CMR 10.58

Town: BOURNE
River: HERRING RIVER
ID: BOURNE MOR-1

March 1, 2005



Map Legend

- Mouth of River
- - - Town Boundary
- State Boundary



Mitt Romney, Governor
Ellen Roy Herzfelder, Secretary
Executive Office of Environmental Affairs

1:7,500
0 250 500 1,000 1,500 Feet
1 inch equals 625 feet

Mouth of River lines delineated
by DEP Wetlands Program.

Color OrthoPhoto base map from
MassGIS, 2001-2003.

Mass DEP GIS Program