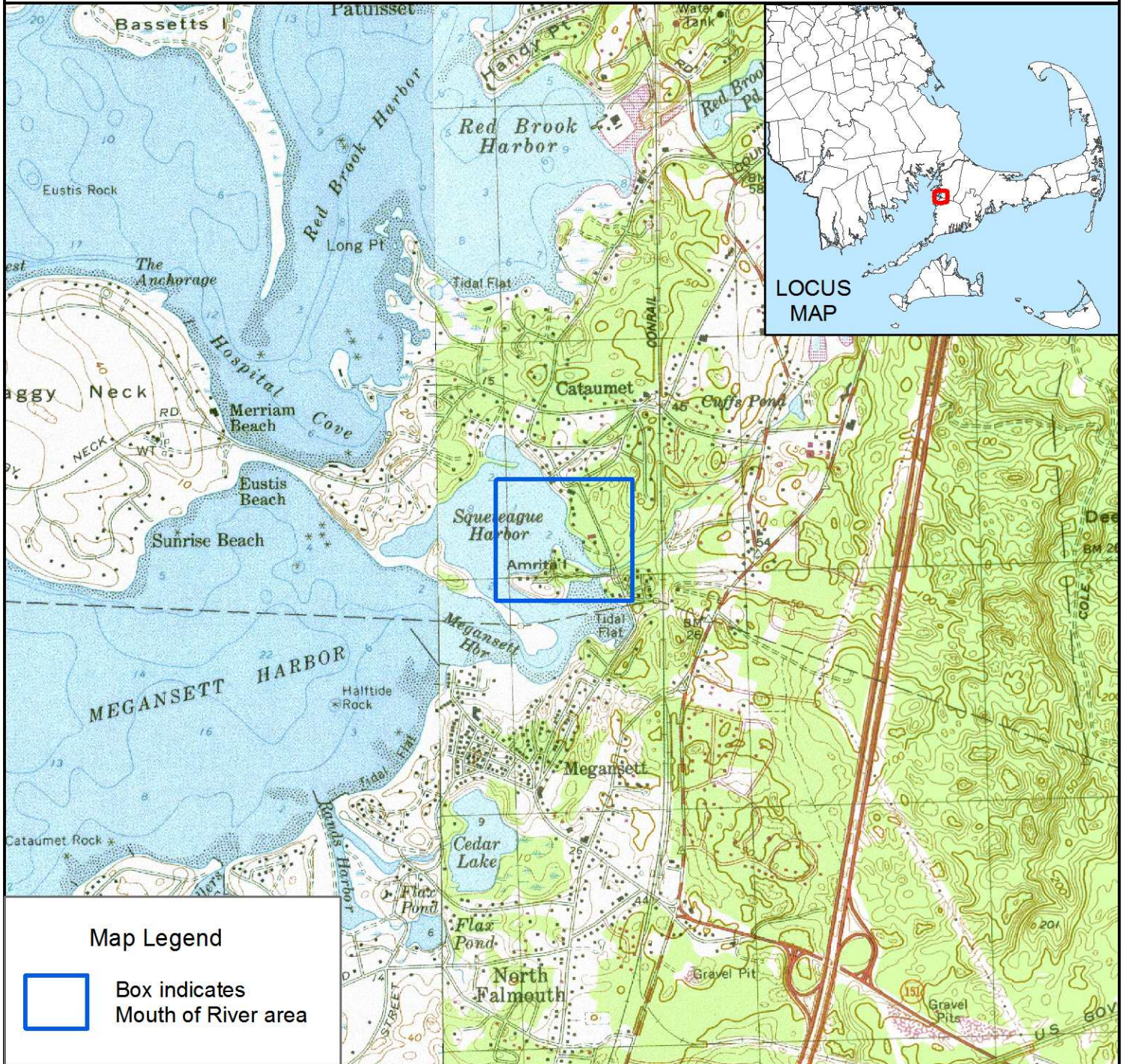


March 1, 2005

# Massachusetts Mouth of Coastal River Maps

M.G.L. c.131, s.40  
310 CMR 10.58

Town: BOURNE  
River: UNNAMED  
ID: BOURNE MOR-7



## Map Legend



Box indicates  
Mouth of River area



Mitt Romney, Governor  
Robert Gollidge, Secretary  
EXECUTIVE OFFICE OF ENVIRONMENTAL AFFAIRS

1:24,000

0 1,000 2,000 3,000 4,000 5,000  
Feet

1 inch equals 2,000 feet

Mouth of River lines delineated  
by DEP Wetlands Program.

Scanned USGS topographic quad  
maps from MassGIS, 1967-1990.

Mass DEP GIS Program