

Massachusetts Mouth of Coastal River Maps

Town: DARTMOUTH

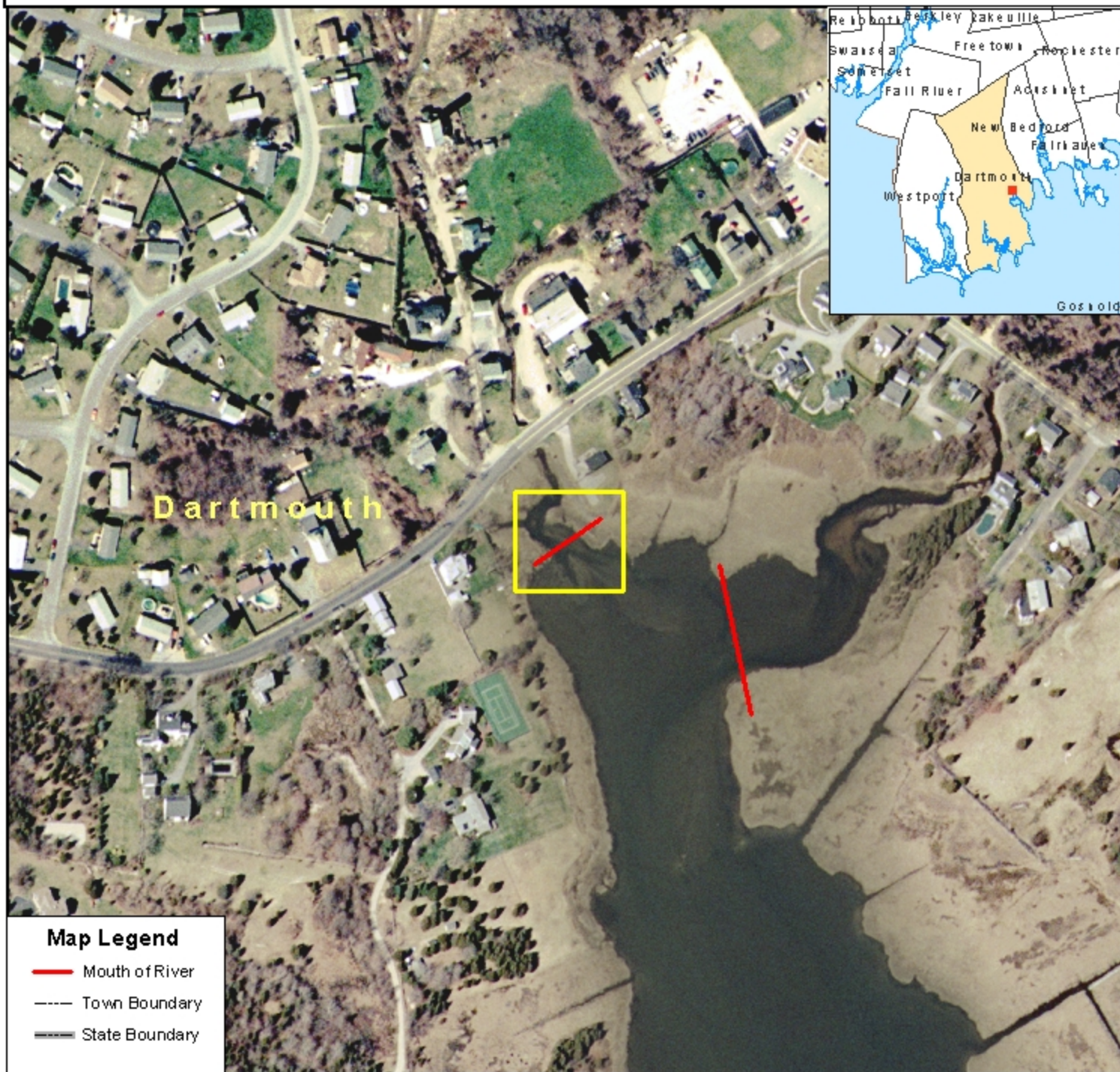
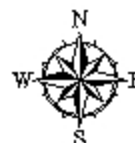
River: UNNAMED

ID: DARTMOUTH MOR-5

M.G.L. c.131, s.40

310 CMR 10.58

March 1, 2005



Map Legend

- Mouth of River
- Town Boundary
- State Boundary



Mitt Romney, Governor
Ellen Roy Herzfelder, Secretary
Executive Office of Environmental Affairs

1:3,000
0 100 200 400 600 Feet

1 inch equals 250 feet

Mouth of River lines delineated
by DEP Wetlands Program.

Color OrthoPhoto base map from
MassGIS, 2001-2003.

Mass DEP GIS Program