

March 1, 2005

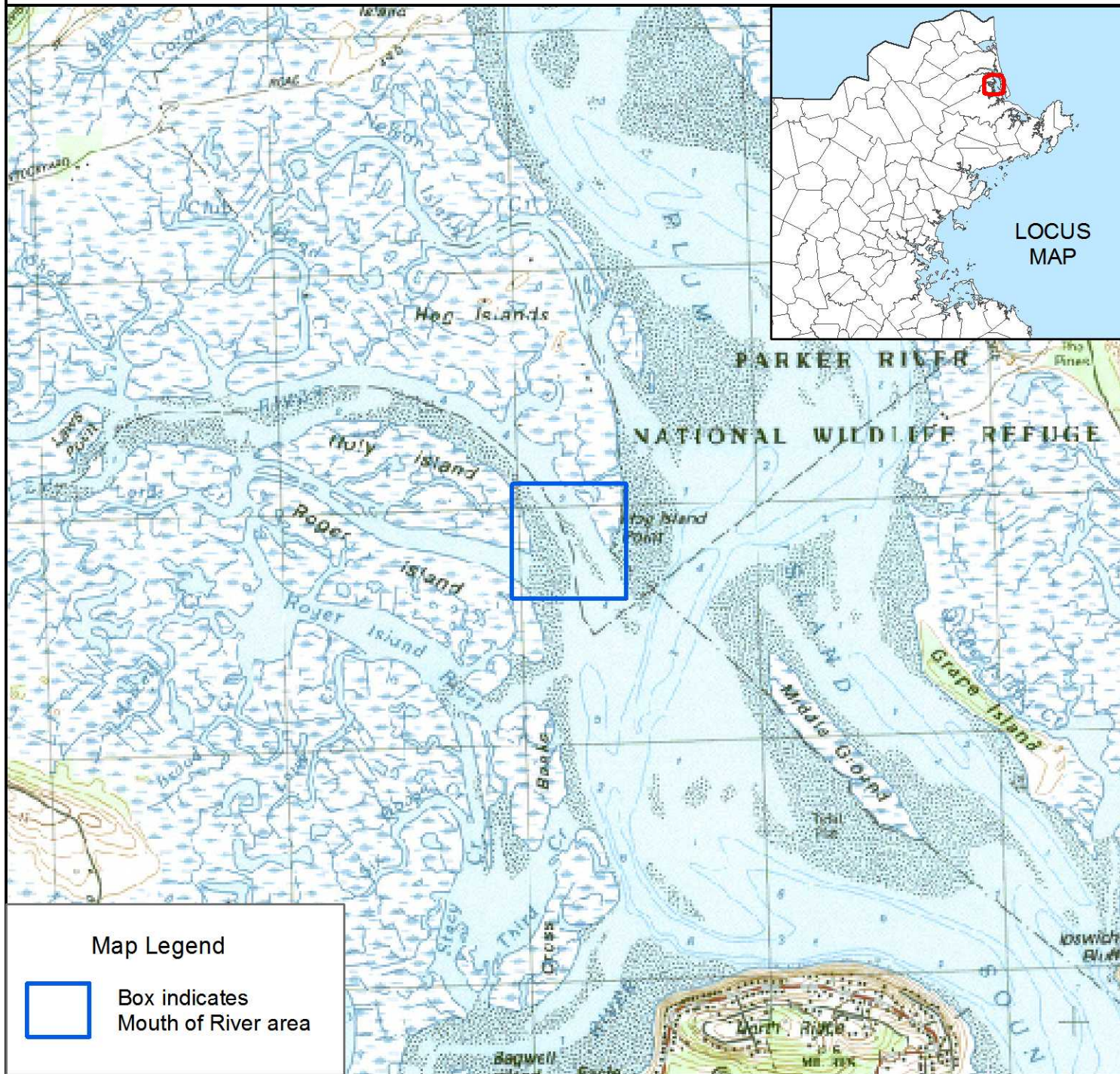
Massachusetts Mouth of Coastal River Maps

M.G.L. c.131, s.40
310 CMR 10.58

Town: IPSWICH / ROWLEY

River: ROWLEY RIVER

ID: IPSWICH-ROWLEY MOR-1



Map Legend



Box indicates
Mouth of River area



Mitt Romney, Governor
Robert Gollidge, Secretary
EXECUTIVE OFFICE OF ENVIRONMENTAL AFFAIRS

1:24,000

0 1,000 2,000 3,000 4,000 5,000 Feet

1 inch equals 2,000 feet

Mouth of River lines delineated
by DEP Wetlands Program.

Scanned USGS topographic quad
maps from MassGIS, 1967-1990.

Mass DEP GIS Program