

Massachusetts Mouth of Coastal River Maps

M.G.L. c.131, s.40

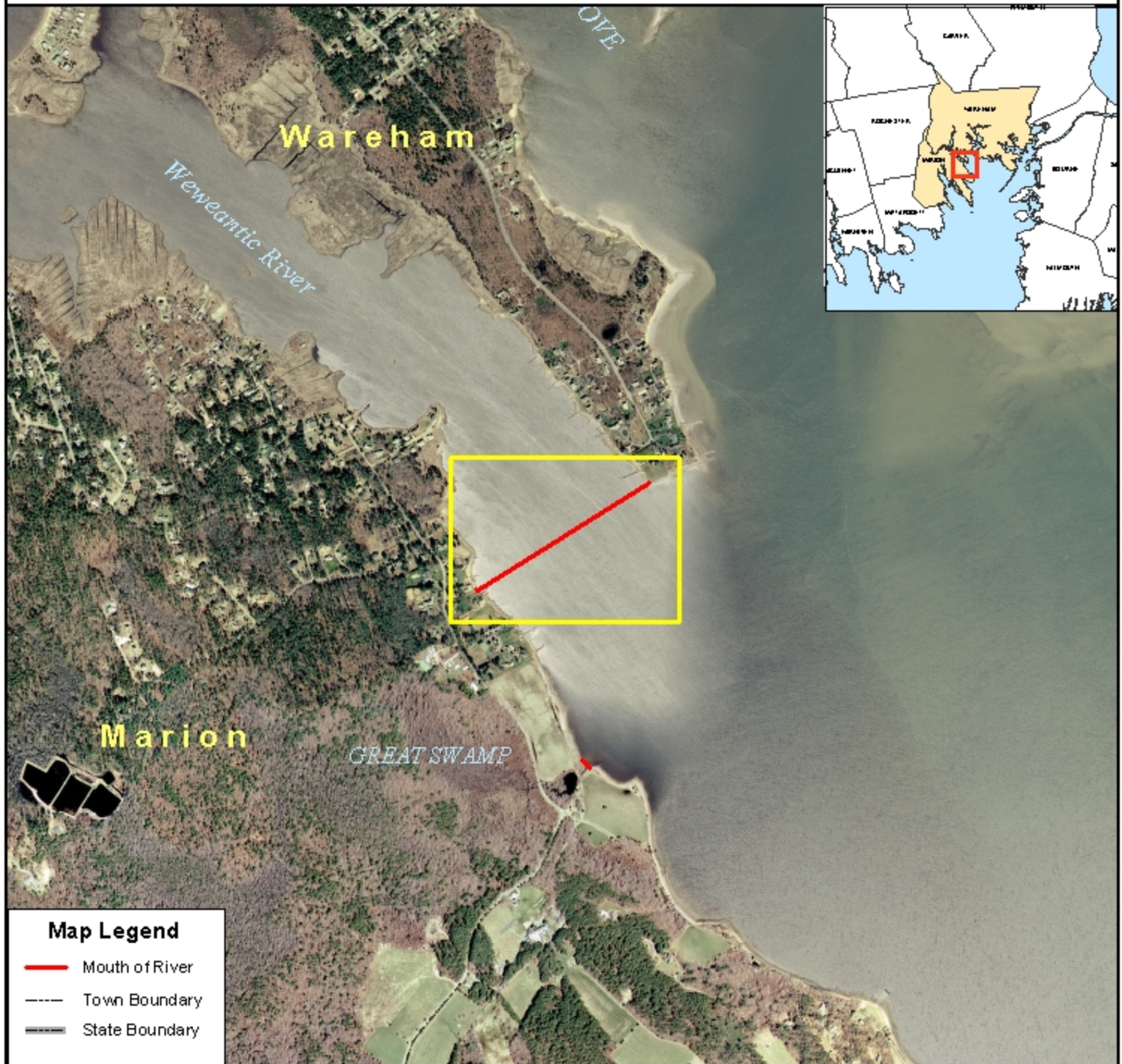
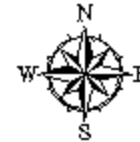
310 CMR 10.58

March 1, 2005

Town: MARION / WAREHAM

River: WEWEANTIC RIVER

ID: MARION-WAREHAM MOR-1



Map Legend

- Mouth of River
- Town Boundary
- State Boundary



Mitt Romney, Governor
Ellen Roy Heitzfelder, Secretary
Executive Office of Environmental Affairs

1:15,000

0 250 500 1,000 1,500 2,000 2,500 3,000 Feet

1 inch equals 1,250 feet

Mouth of River lines delineated
by DEP Wetlands Program.

Color OrthoPhoto base map from
MassGIS, 2001-2003.

Mass DEP GIS Program