

Massachusetts Mouth of Coastal River Maps

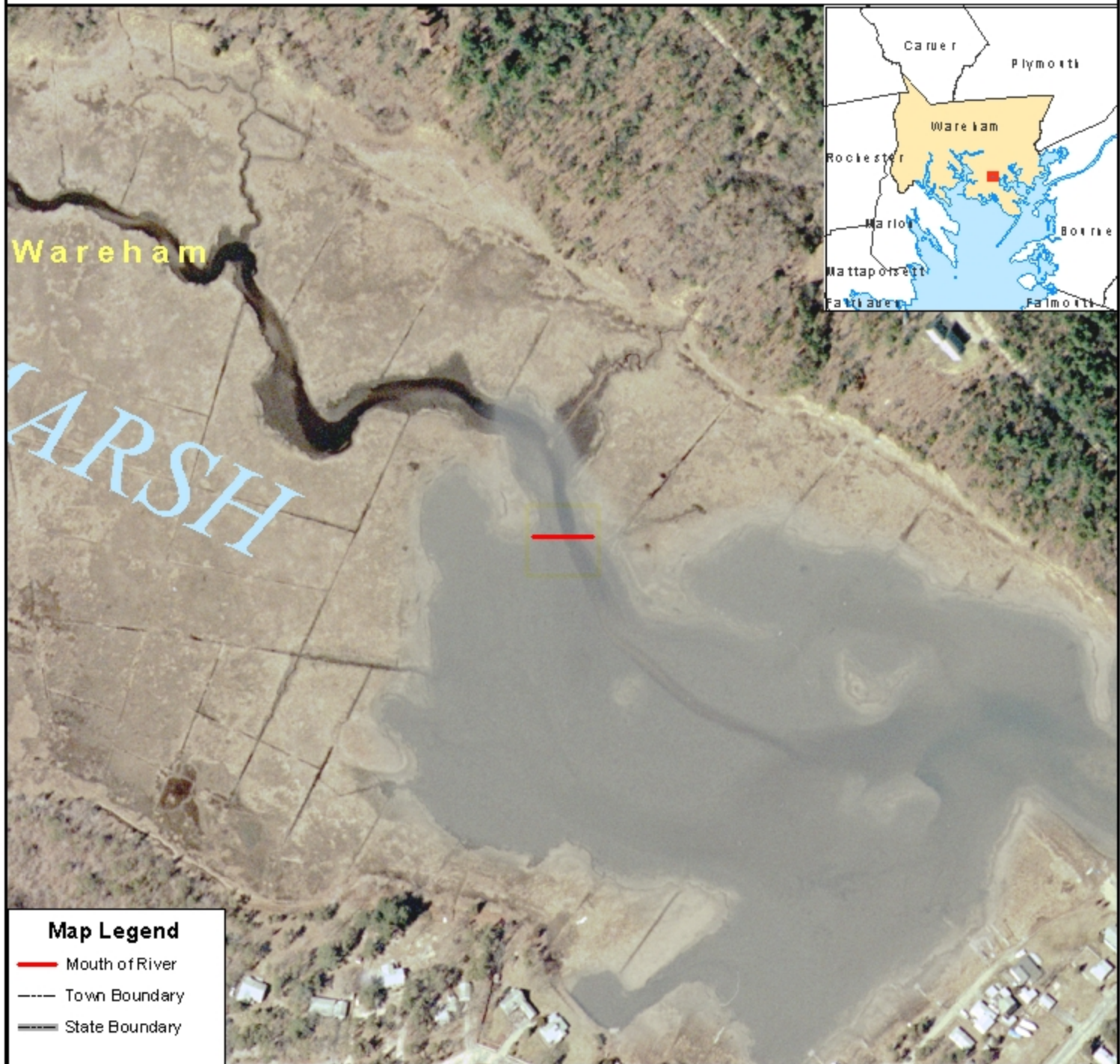
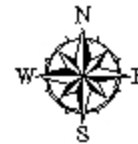
M.G.L. c.131, s.40
310 CMR 10.58

Town: WAREHAM

River: UNNAMED TO SHELL POINT BAY

ID: WAREHAM MOR-8

March 1, 2005



Map Legend

- Mouth of River
- - - Town Boundary
- State Boundary



Mitt Romney, Governor
Ellen Roy Herzfelder, Secretary
Executive Office of Environmental Affairs

1:3,000
0 100 200 400 600 Feet

1 inch equals 250 feet

Mouth of River lines delineated
by DEP Wetlands Program.

Color OrthoPhoto base map from
MassGIS, 2001-2003.

Mass DEP GIS Program