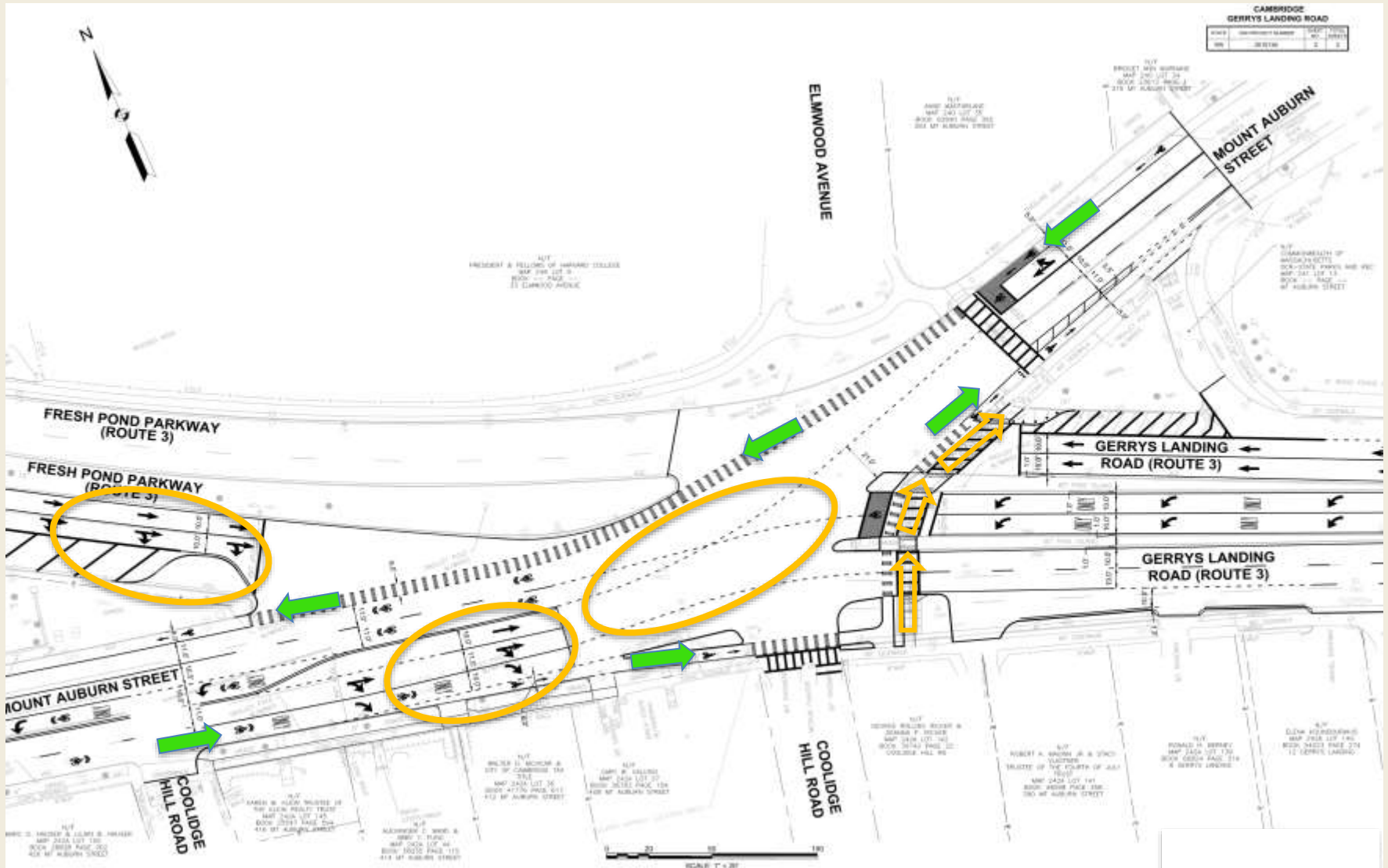


Existing Conditions



Short-term Improvements to Mount Auburn/Fresh Pond



Mount Auburn Street Corridor Improvements



Key Improvements

- Safer and shorter pedestrian crossings
- New pavement markings for safer crossings for Mount Auburn bicycle traffic
- Maintains traffic flow through signal improvements
 - Shorter Stop bar distances
 - Signal efficiency
 - Additional queueing space
 - Balance Green Time from Fresh Pond Pkwy to Mt. Auburn
 - Formalizes southbound approach of Fresh Pond Pkwy
- Improved operation at Coolidge Hill Road



Alignment to Shared Goals

- Provides a short-term solution on the way to larger changes
- Improves safety and connectivity for cyclists and pedestrians
- Increases clarity for motorists – “who should be where, when.”
- Does not unduly impede vehicle mobility
- Ensures successful transit improvements already made are held harmless

