

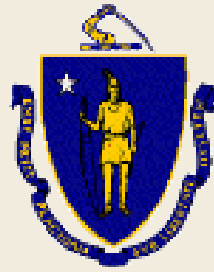


Mount Auburn Street Corridor Study



August 18, 2016
Russell Youth
Community Center





Commonwealth of Massachusetts

Governor

Charles D. Baker

Lieutenant Governor

Karyn E. Polito

Energy and Environmental Secretary

Matthew A. Beaton

Department of Conservation and Recreation Commissioner

Leo P. Roy



DCR Mission Statement

*To protect, promote and enhance our
common wealth of natural, cultural
and recreational resources
for the well-being of all.*

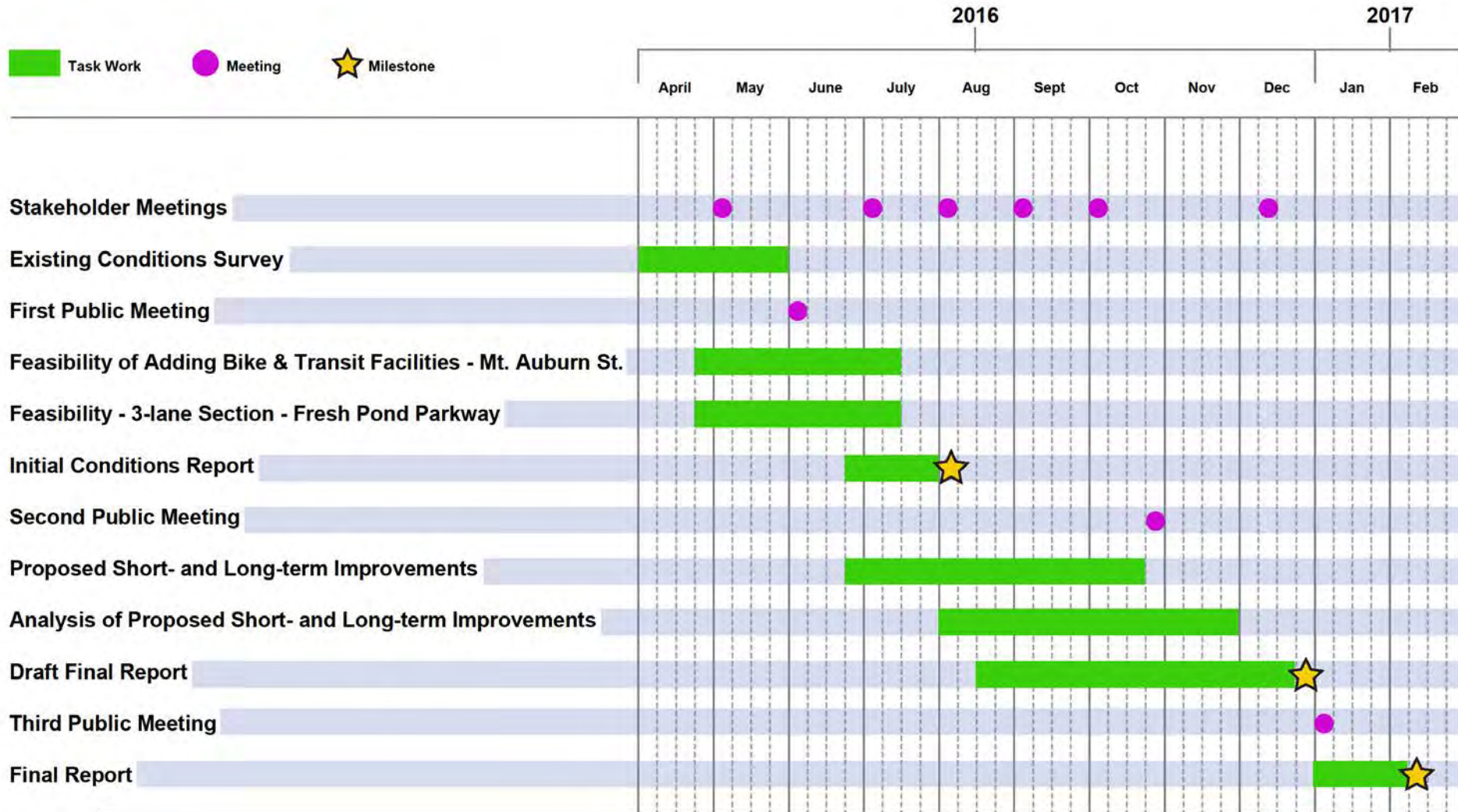
Agenda

- Welcome
- Mt Auburn Concept Draft Updates
- Fresh Pond Parkway Concept Draft
- Plaza Design Charrette

Agenda



Schedule



PLEASE NOTE:

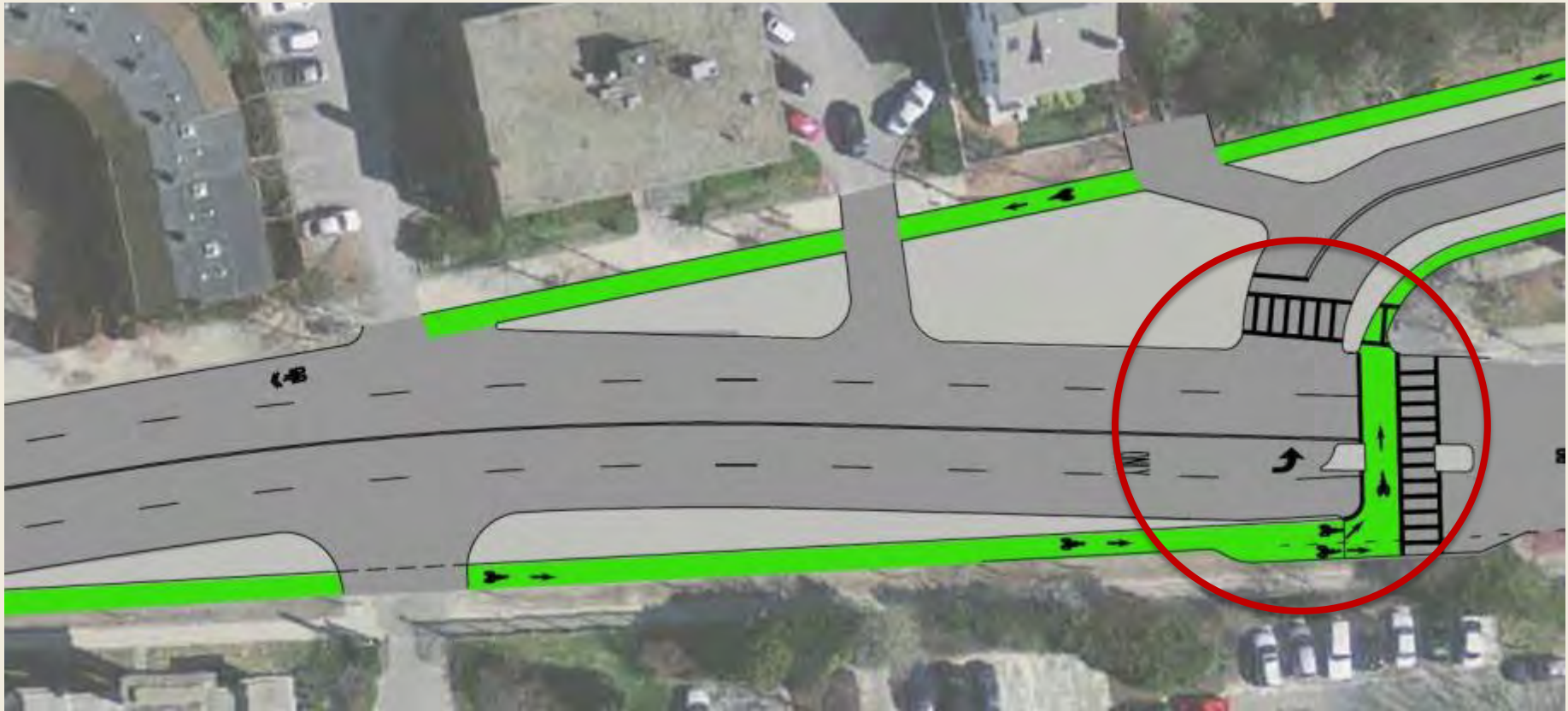
The following concepts are drafts; works in progress shown only for the purpose of collecting public feedback for their improvement.



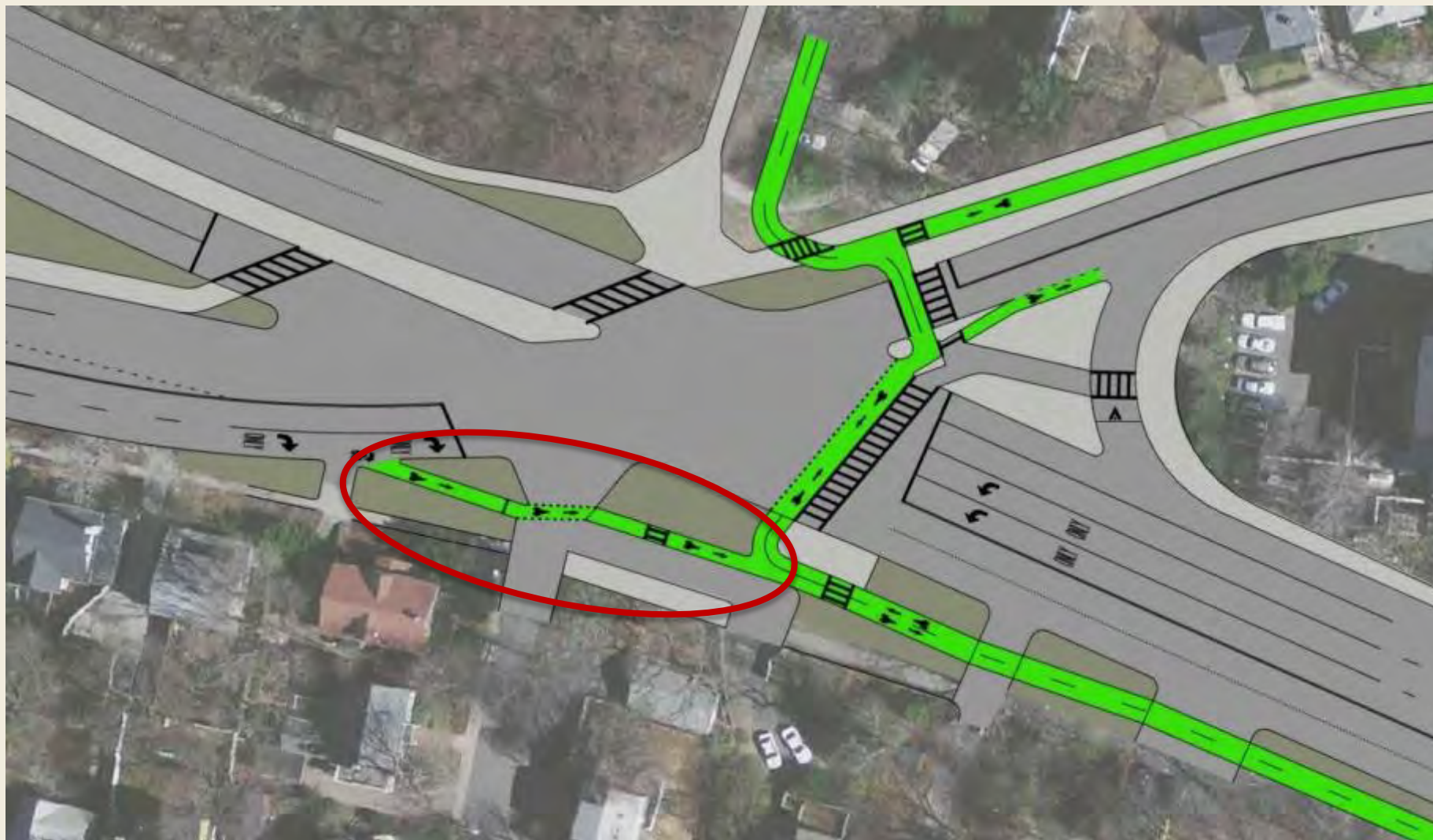
Mt. Auburn Draft Concept Updates

Signal Likely Warranted at Mt Auburn at Brattle Street

- Peak-hour, four-hour volumes warrant a traffic signal, estimates for eight-hour volumes also warrant a signal. (MUTCD 2009)



New Bike Connection at Fresh Pond Parkway





Mt. Auburn Roundabout Feasibility

Roundabout Feasibility — Historic View



1952

Roundabout Feasibility — Existing Conditions



Circa 2015

Roundabout Feasibility — Placement vs. 1952



Roundabout Feasibility — Placement vs. Existing I



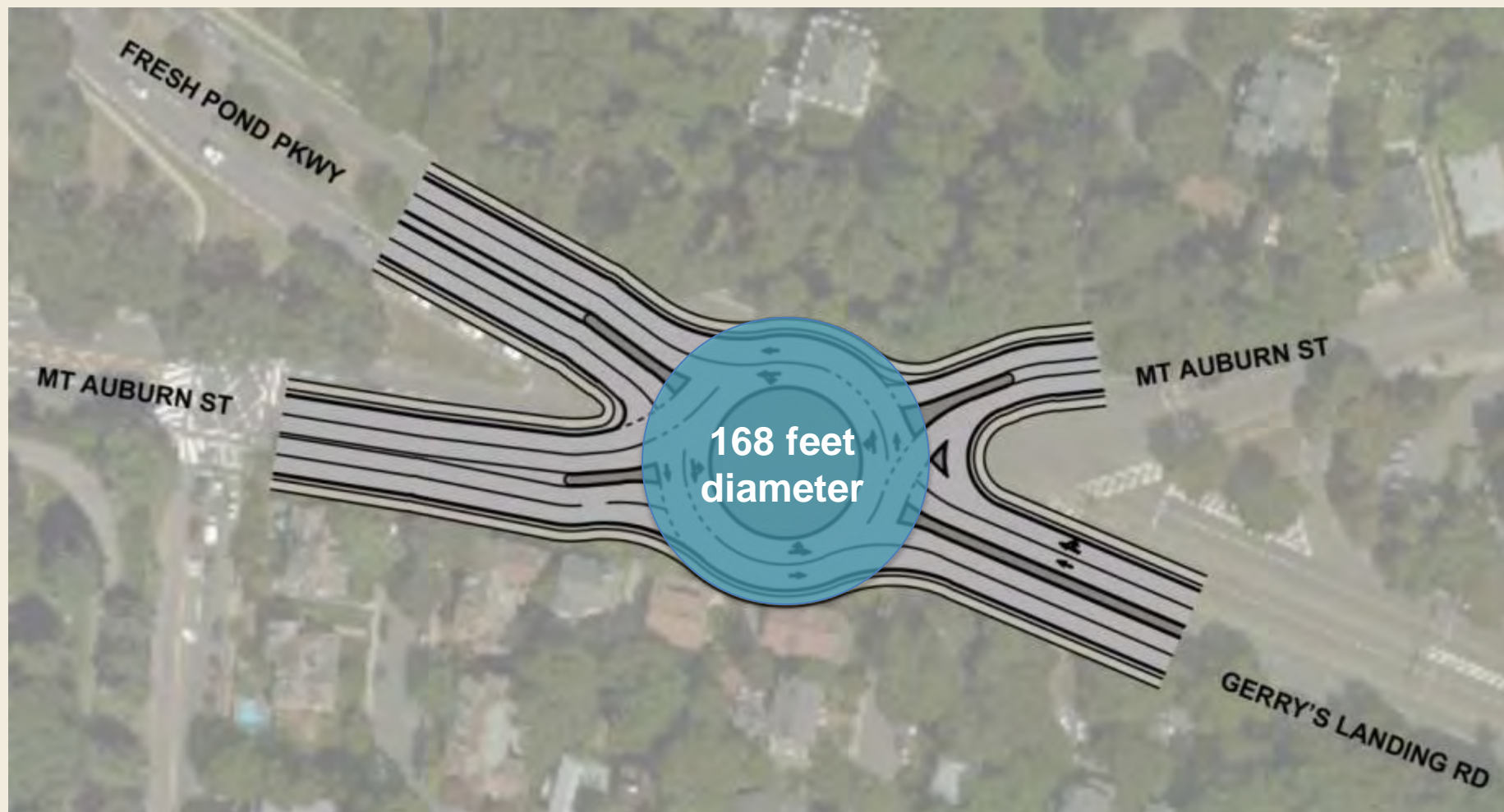
Roundabout Feasibility — Placement vs. Existing II



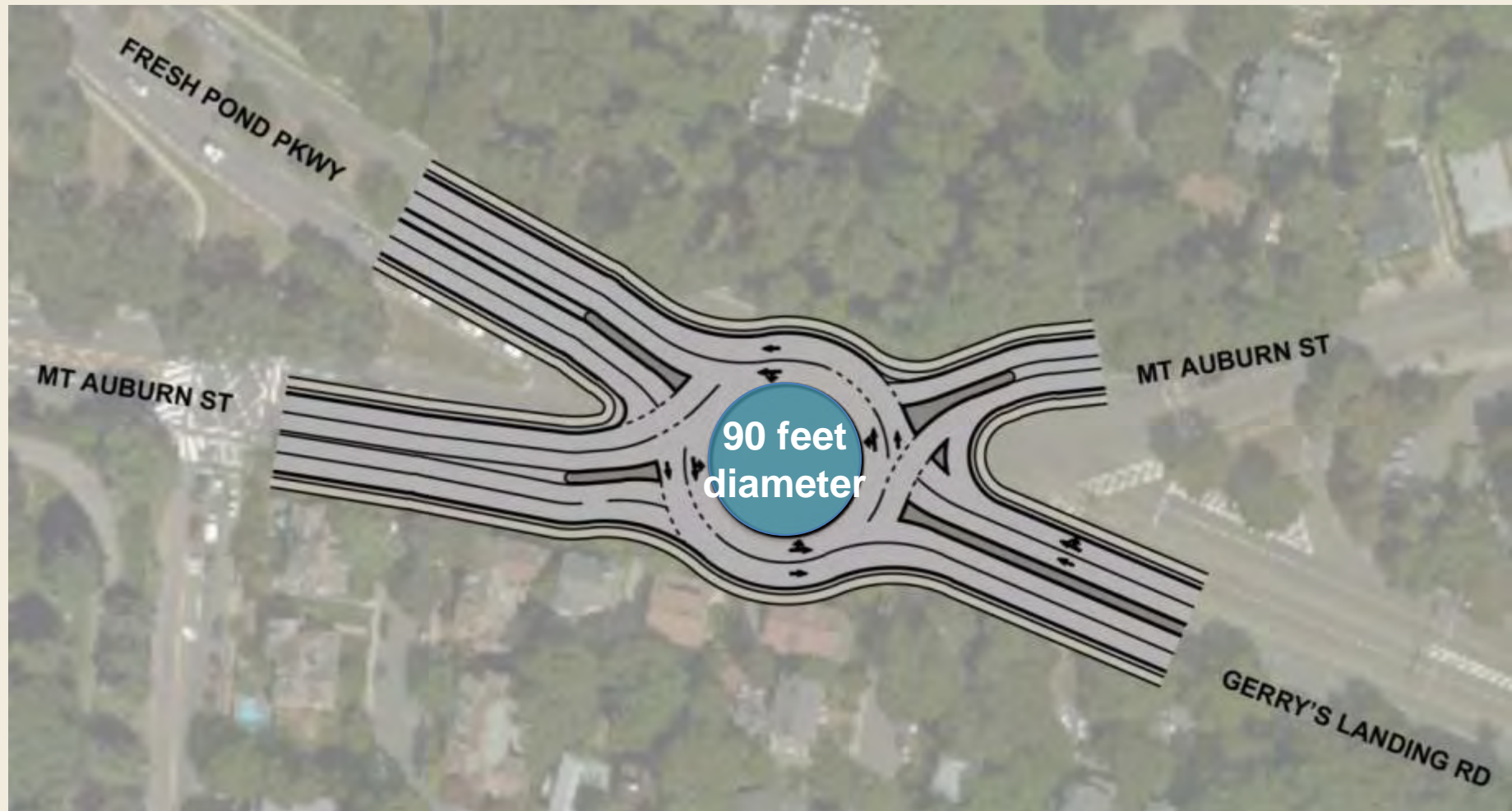
How is a ROTARY Different from a Roundabout?



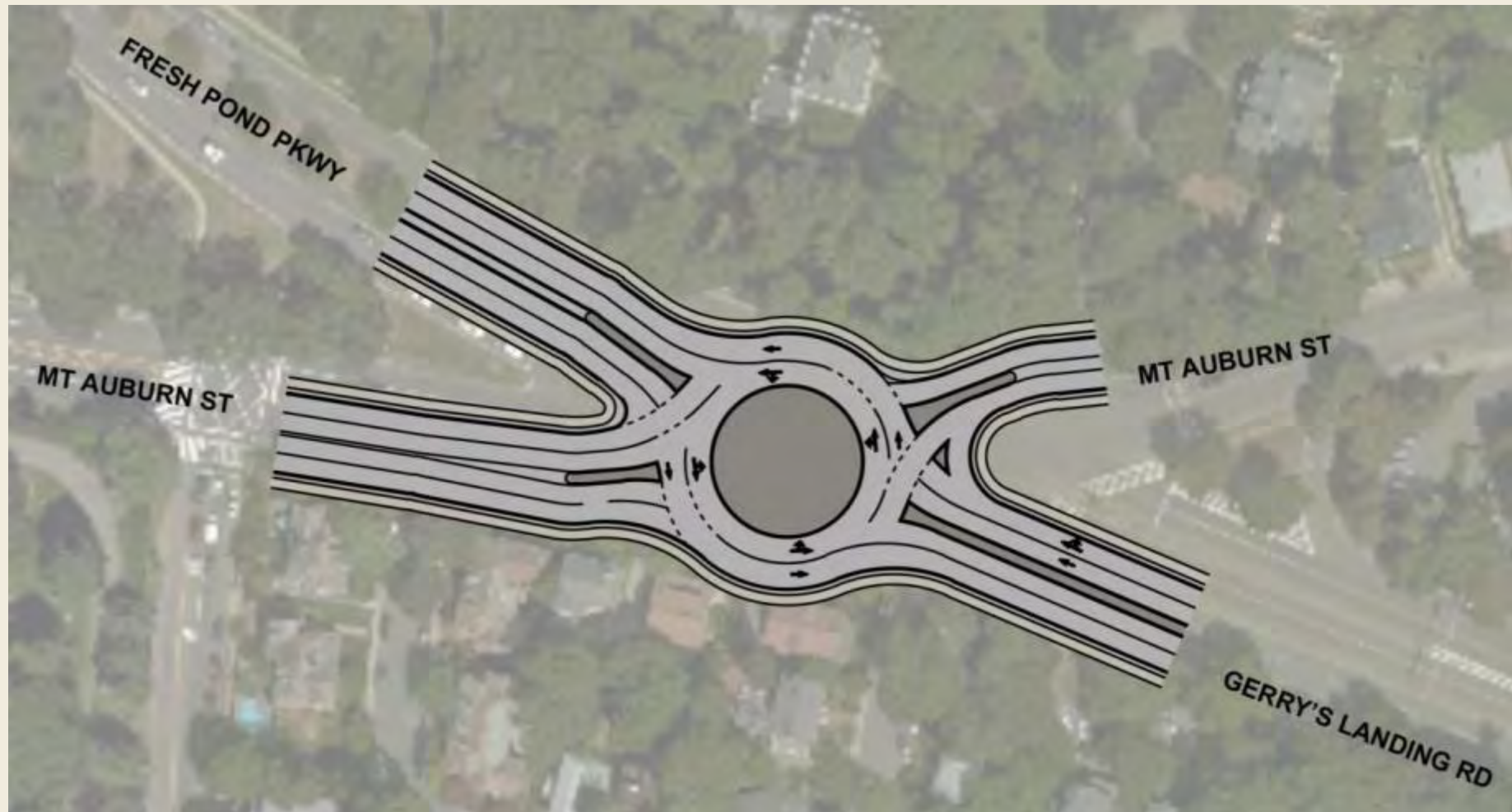
Roundabout Feasibility — Outside Diameter



Roundabout Feasibility — Inside Diameter



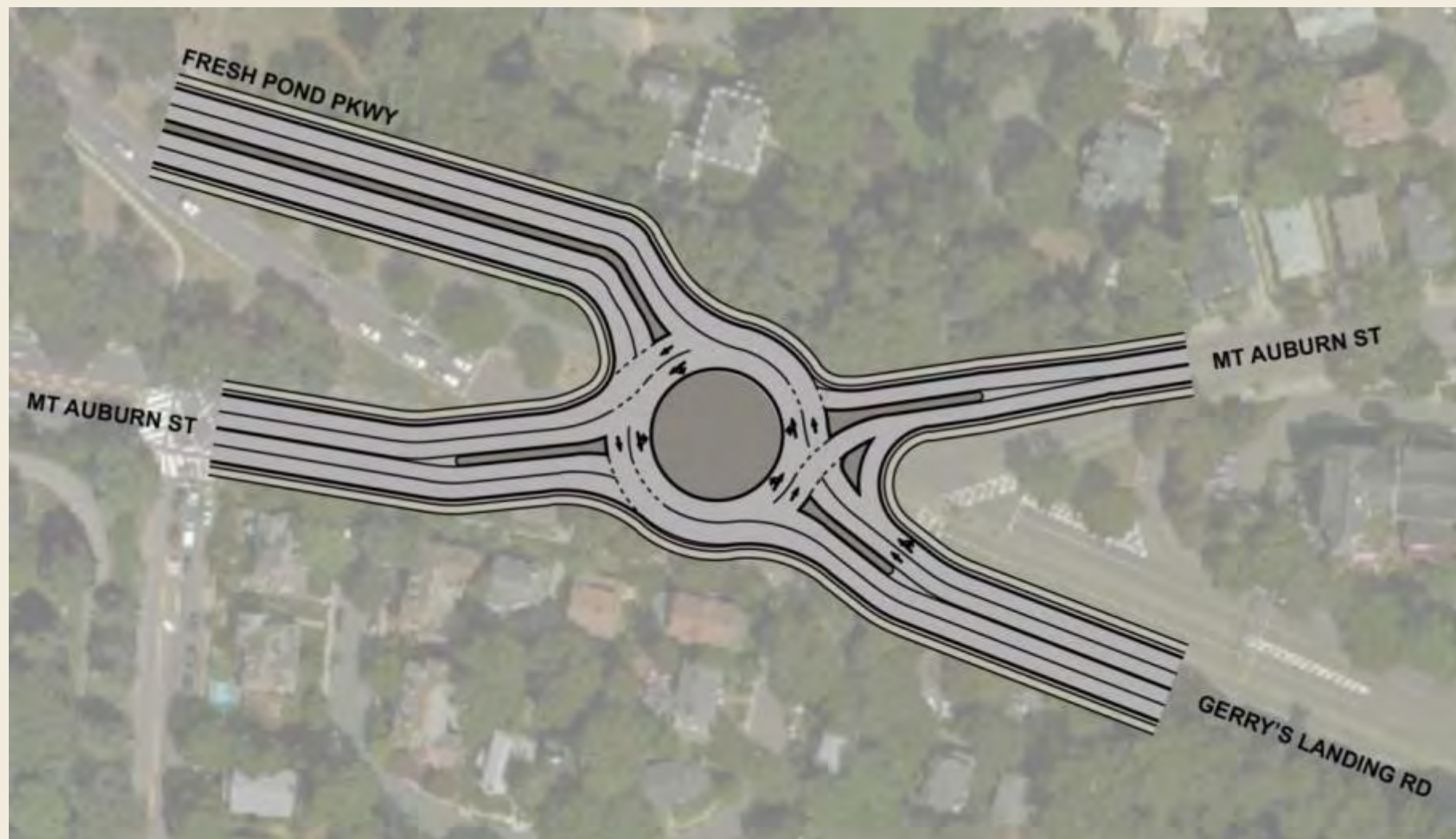
Roundabout Feasibility — Lane Configuration



Roundabout Feasibility — Residential Impacts



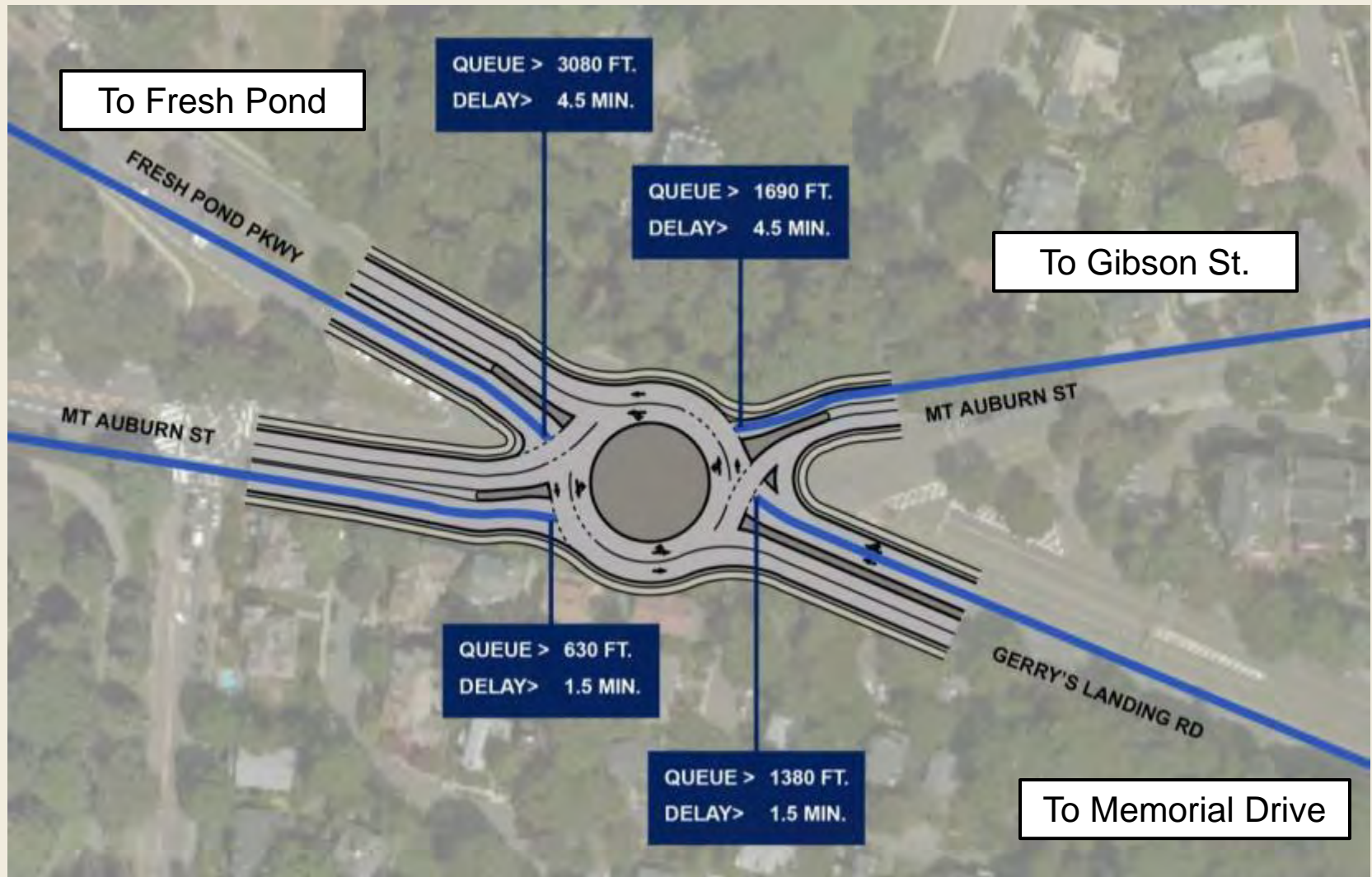
Roundabout Feasibility — Avoiding Residential Impacts



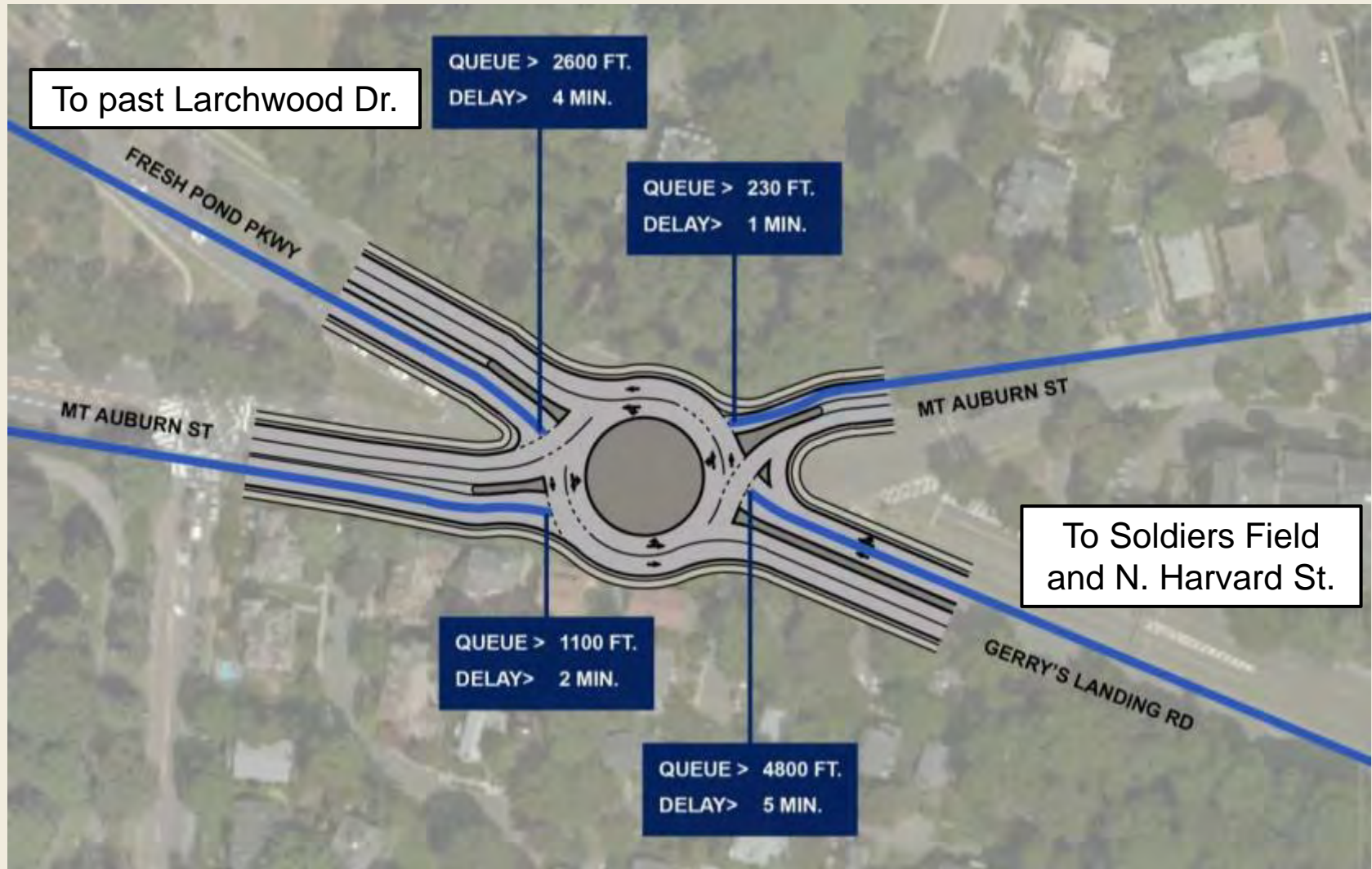
Roundabout Feasibility — Parkland Impacts



Roundabout Feasibility — AM Traffic Queues



Roundabout Feasibility — PM Traffic Queues



Roundabout Feasibility — La Rotonda, Lacarno, Switzerland



Roundabout Feasibility — La Rotonda, Lacarno, Switzerland



Roundabout Feasibility — La Rotonda, Lacarno, Switzerland



Roundabout Feasibility — La Rotonda Size Comparison



Roundabout Feasibility – Key Takeaways

- Rotary vs. Roundabout.
- Roundabout fails to handle existing traffic.
- Cut-through traffic would increase significantly on all possible local streets.
- Significantly alters historic parkway, park land, or other property.

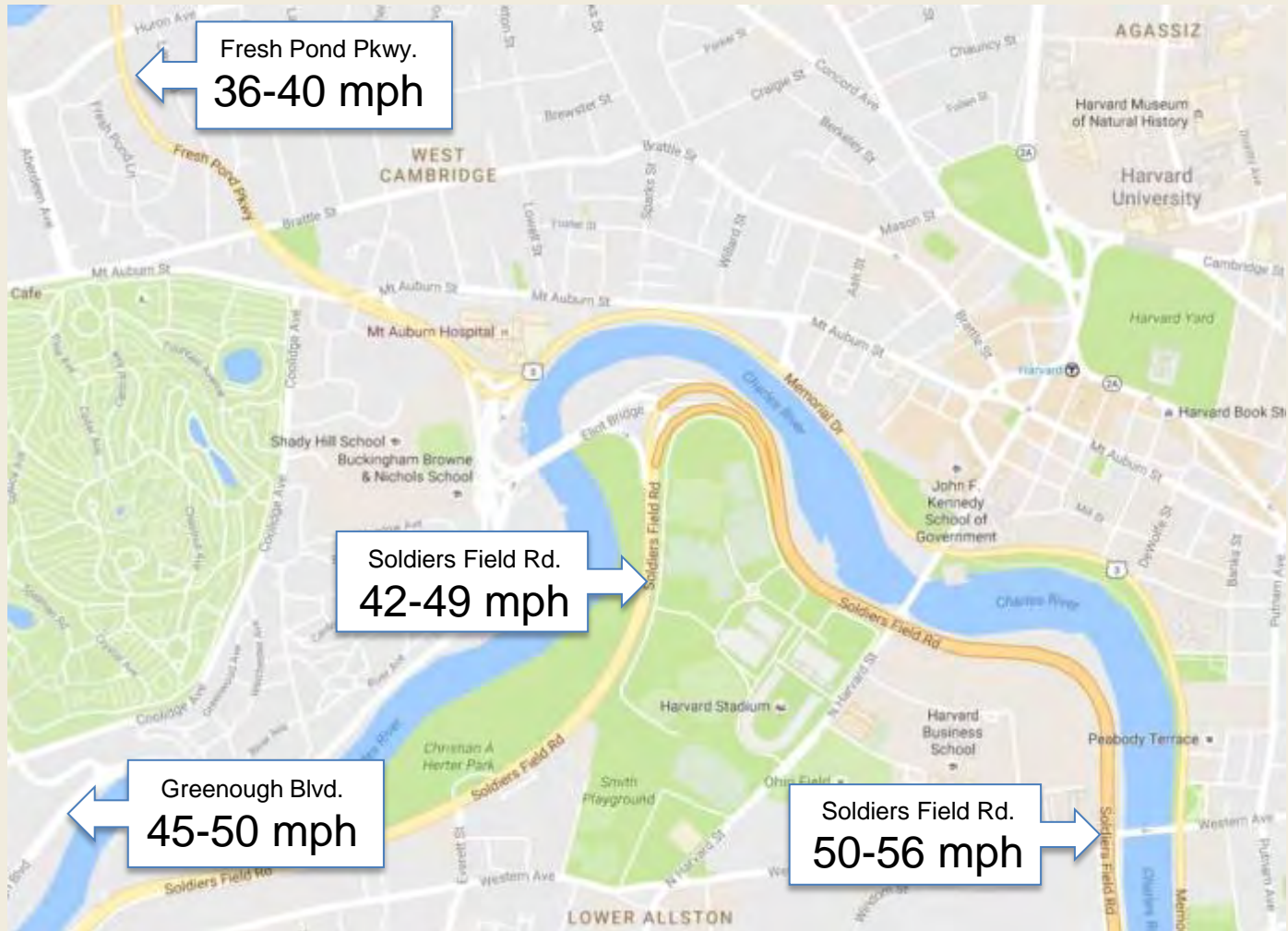


Mt. Auburn Underpass Feasibility

Underpass Feasibility — Regional Speeds

MIT Speed Study 2001

50th – 85th
percentile speeds



Underpass Feasibility — Soldiers Field Rd. under Western Ave.



- Eastbound 34,699 ADT
- Westbound 34,555 ADT
- 50th/85th Percentile Speed 50-56 mph

Underpass Feasibility — Width

← Total Width Required = 124 Feet →



Underpass Feasibility — Length & Width (no southbound turns)



Underpass Feasibility – Key Takeaways

- Would significantly widen roadway
- Requires conversion of parkland to roadway (4f process)
- Likely to increase speeds
- Amplifies noise



Fresh Pond Parkway Corridor Draft Concepts

Gerrys Landing, Memorial Dr., Eliot Bridge, and Greenough Blvd - 1938



Route 2 recently connected to Alewife Brook Parkway as Hwy

Gerrys Landing, Memorial Dr., Eliot Bridge, and Greenough Blvd. - 1952



Gerrys Landing, Memorial Dr., Eliot Bridge, and Greenough Blvd. - 1962



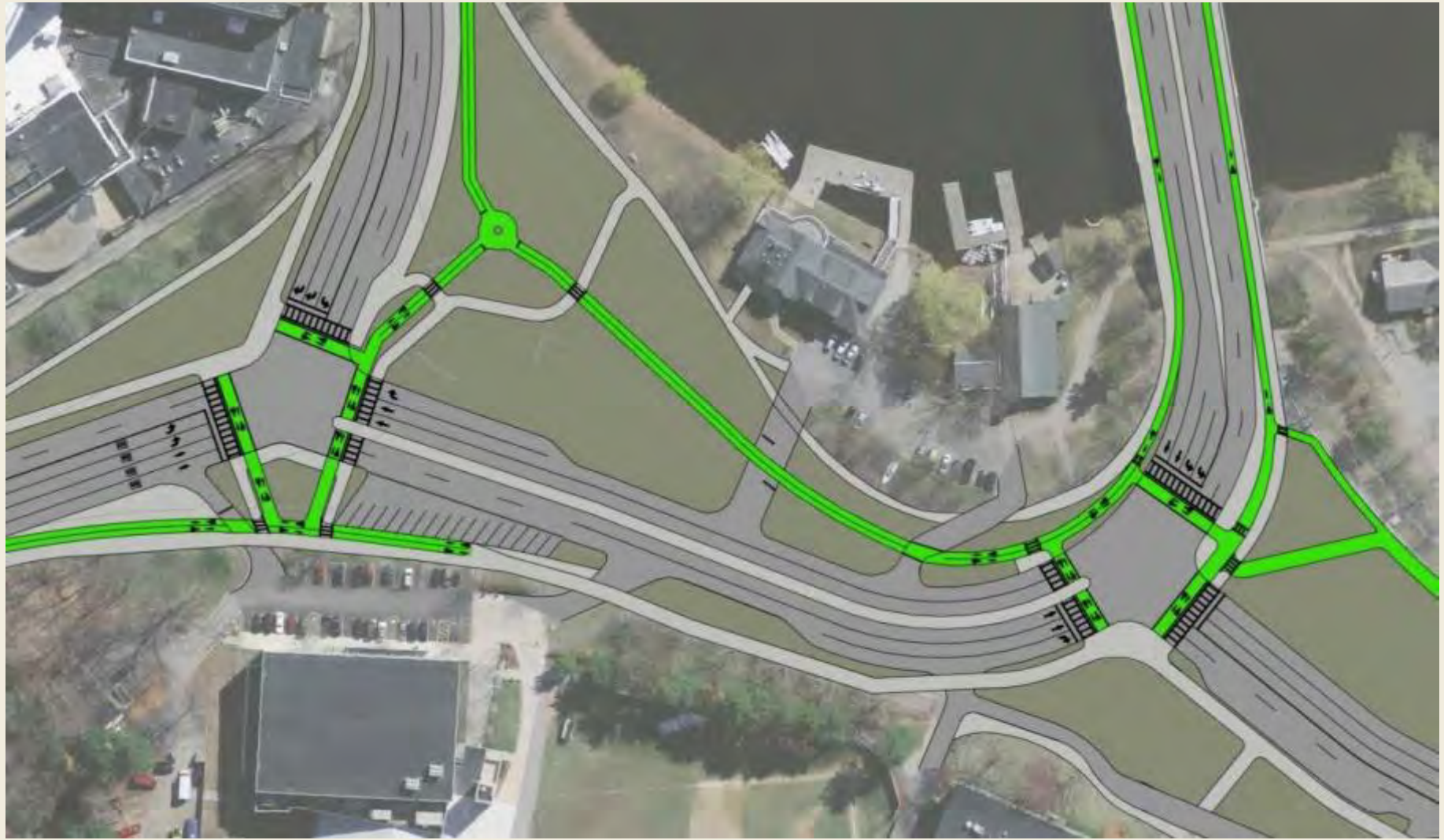
Gerrys Landing, Memorial Dr., Eliot Bridge, and Greenough Blvd. - 1969



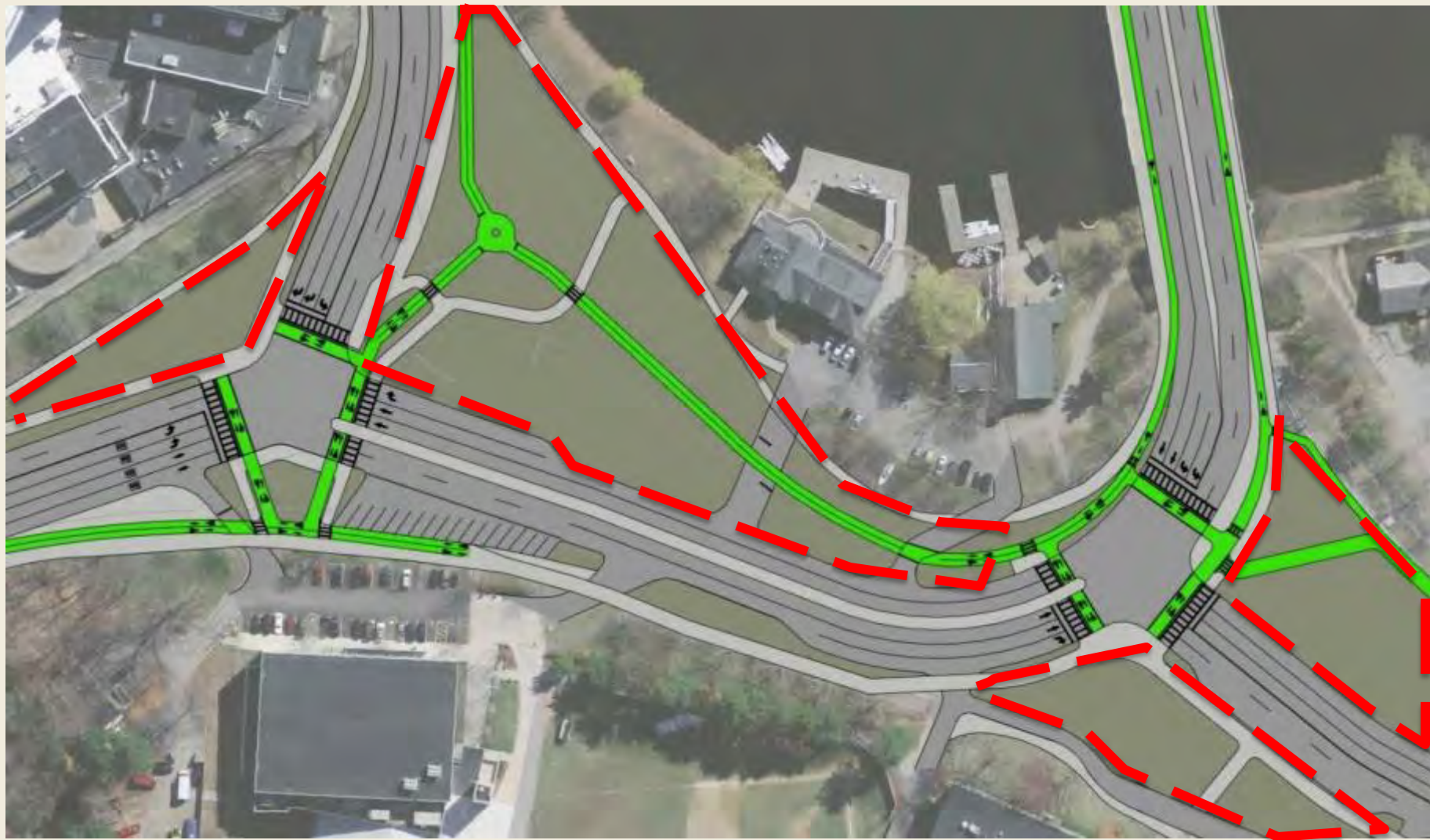
Gerrys Landing, Memorial Dr., Eliot Bridge, and Greenough Blvd. - 2015



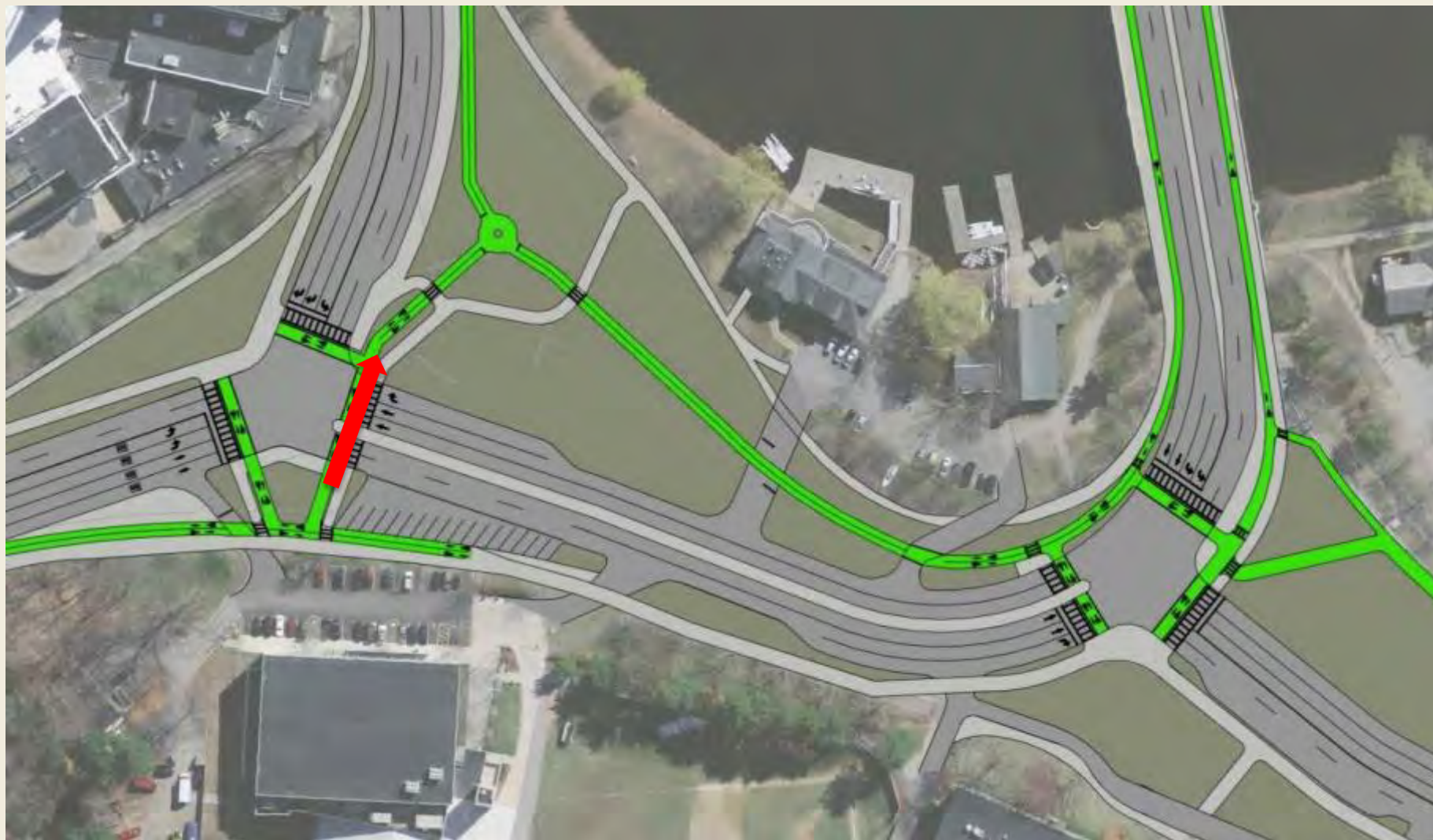
Two-T Alternative



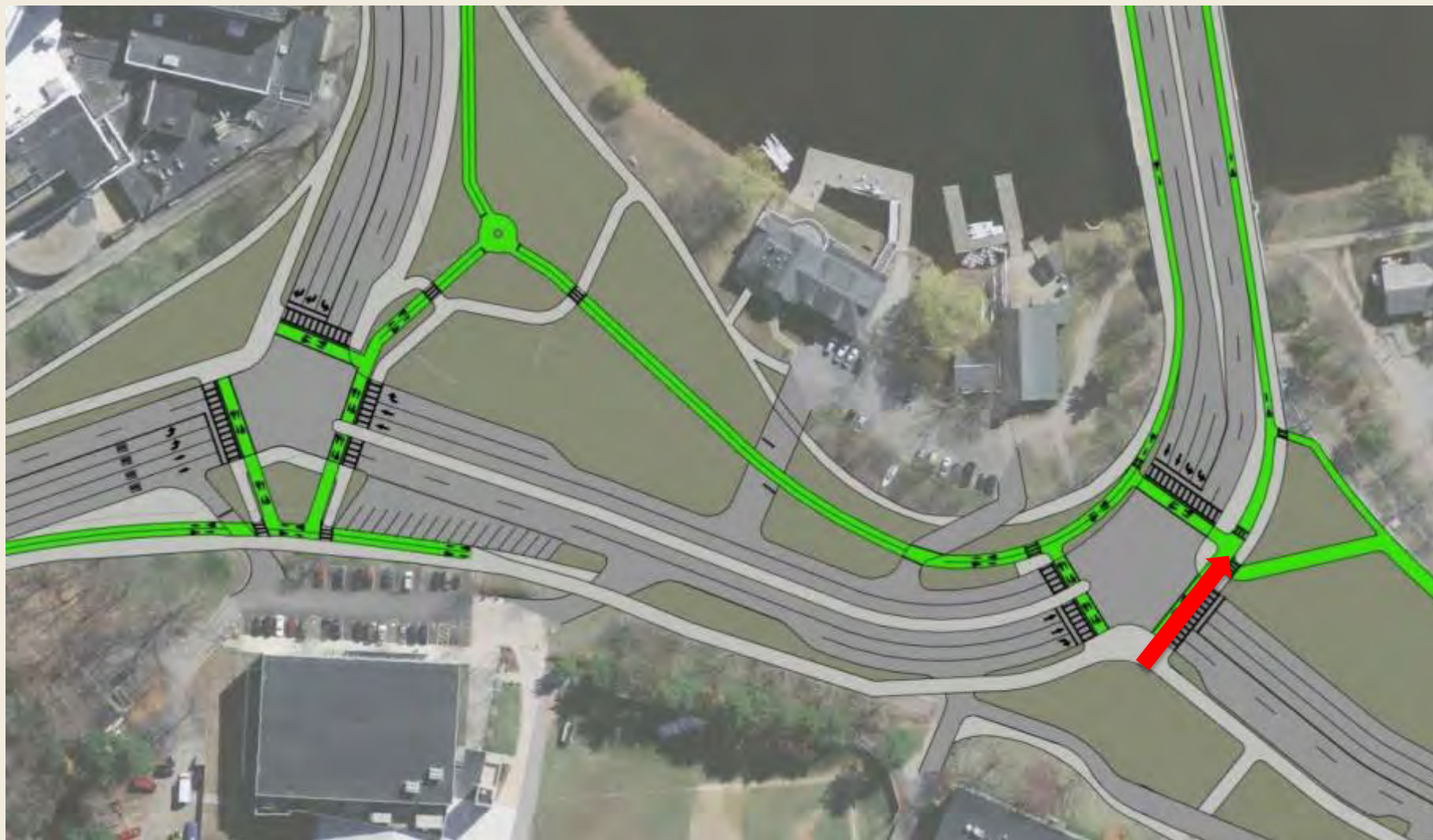
Two-T Alternative – More than 4 acres of new accessible open space



Two-T Alternative – One Stage Crossing I



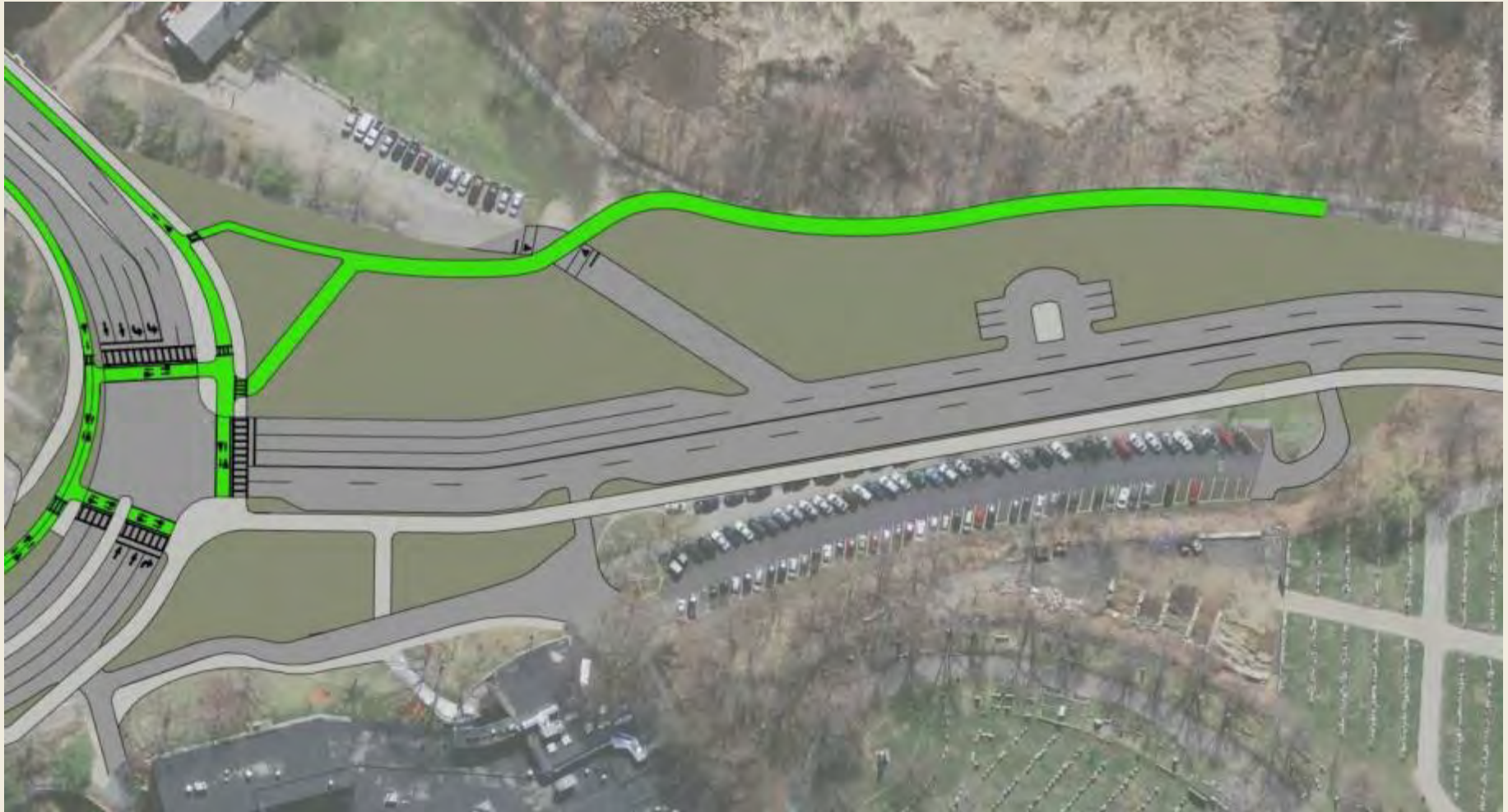
Two-T Alternative – One Stage Crossing II



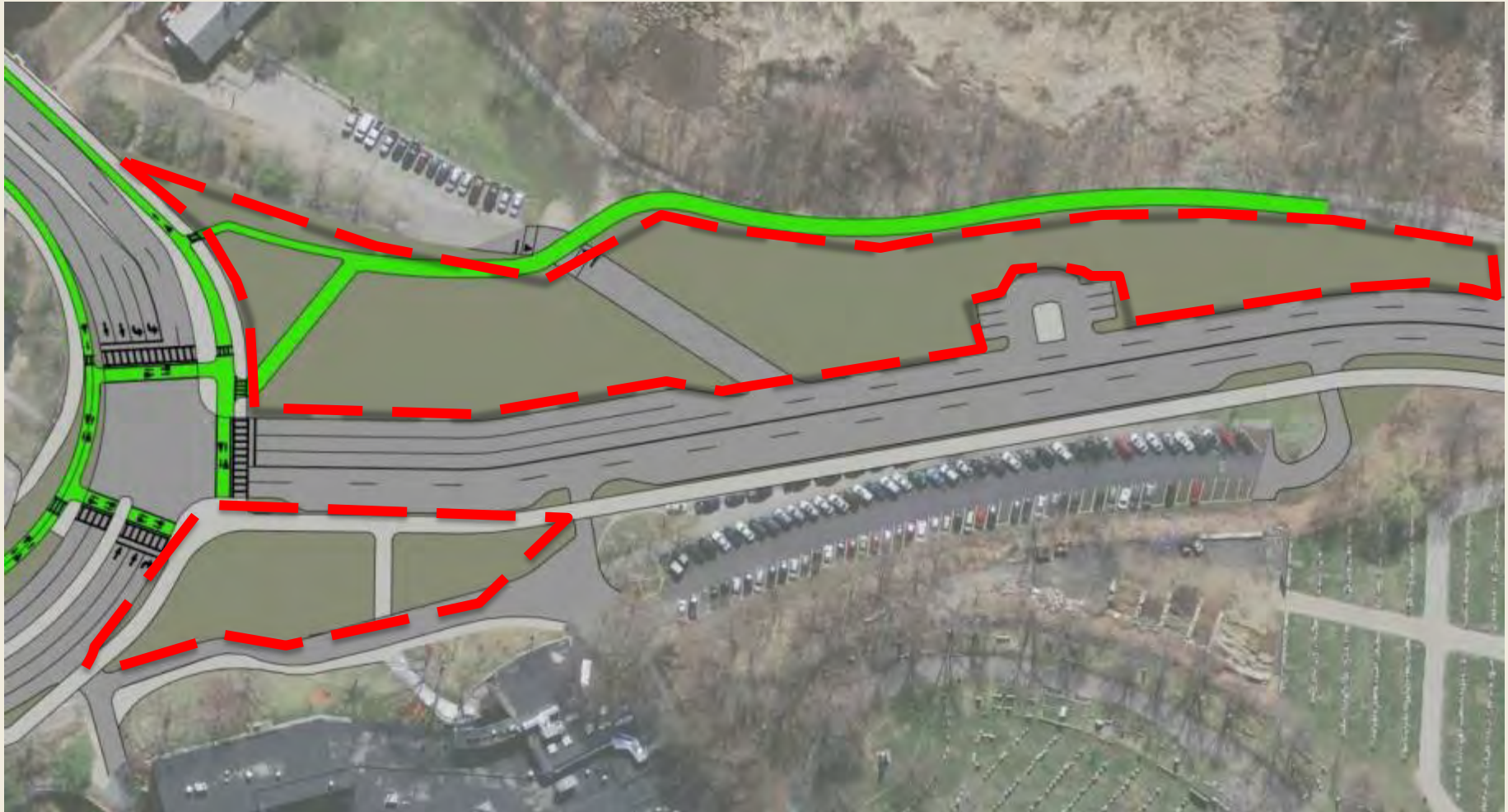
Two-T Alternative, Greenough Side – Existing



Two-T Alternative, Greenough Side – Proposed



Two-T Alternative, Greenough Side – New Parkland



Gerrys Landing, Eliot Bridge, and Greenough Blvd.

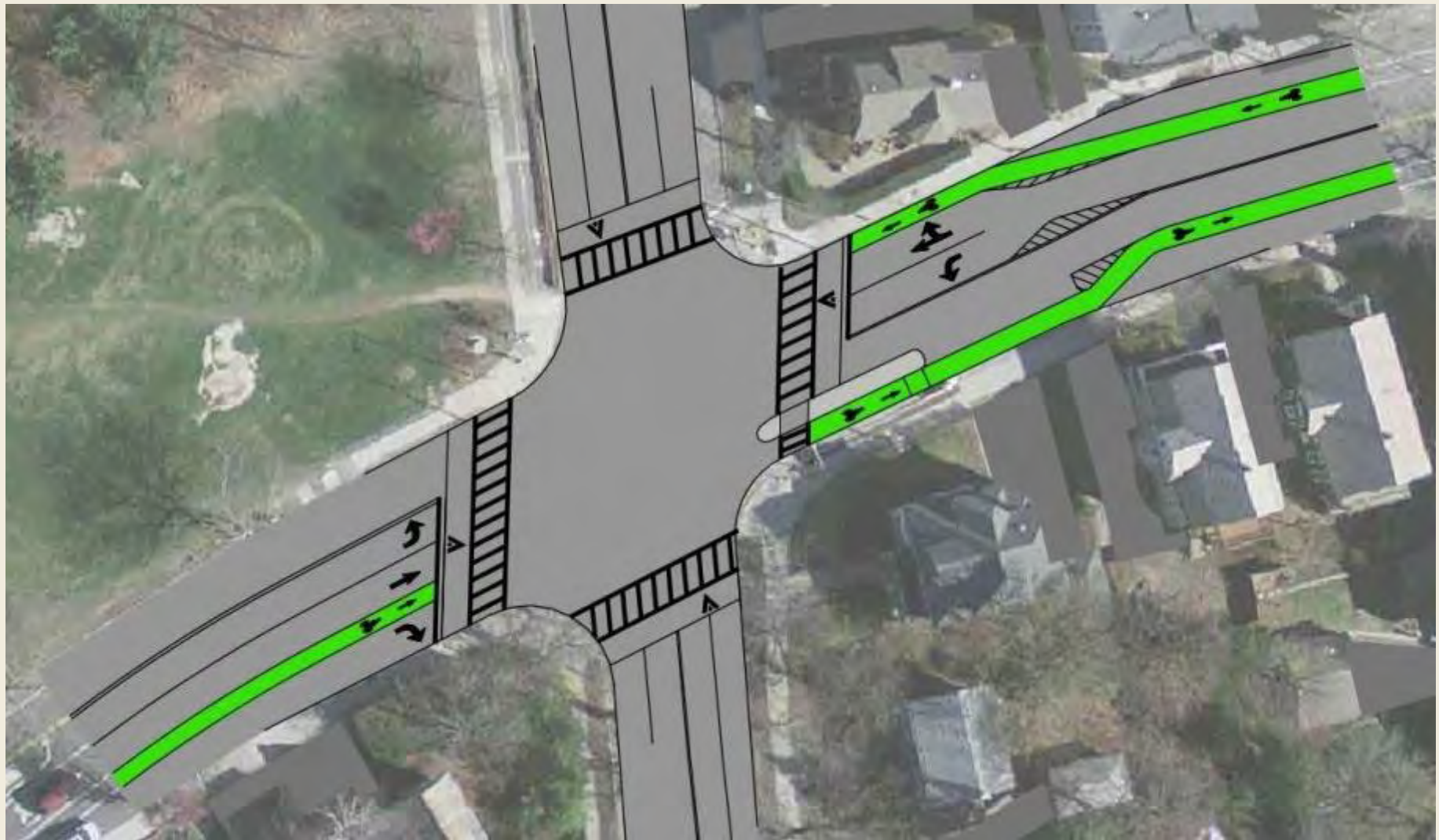
Key Takeaways

- Approximately 4.5 acres of new parkland.
- Single-stage crossings to the Charles River.
- Low-stress bike connection from Mt. Auburn St. to Paul Dudley White Bike Path.
- School pick-up and drop off zone/safe parking area.
- School U-turn included.
- More work on BB&N pick up and drop off needed.
- Road diet and narrowed travel lanes.

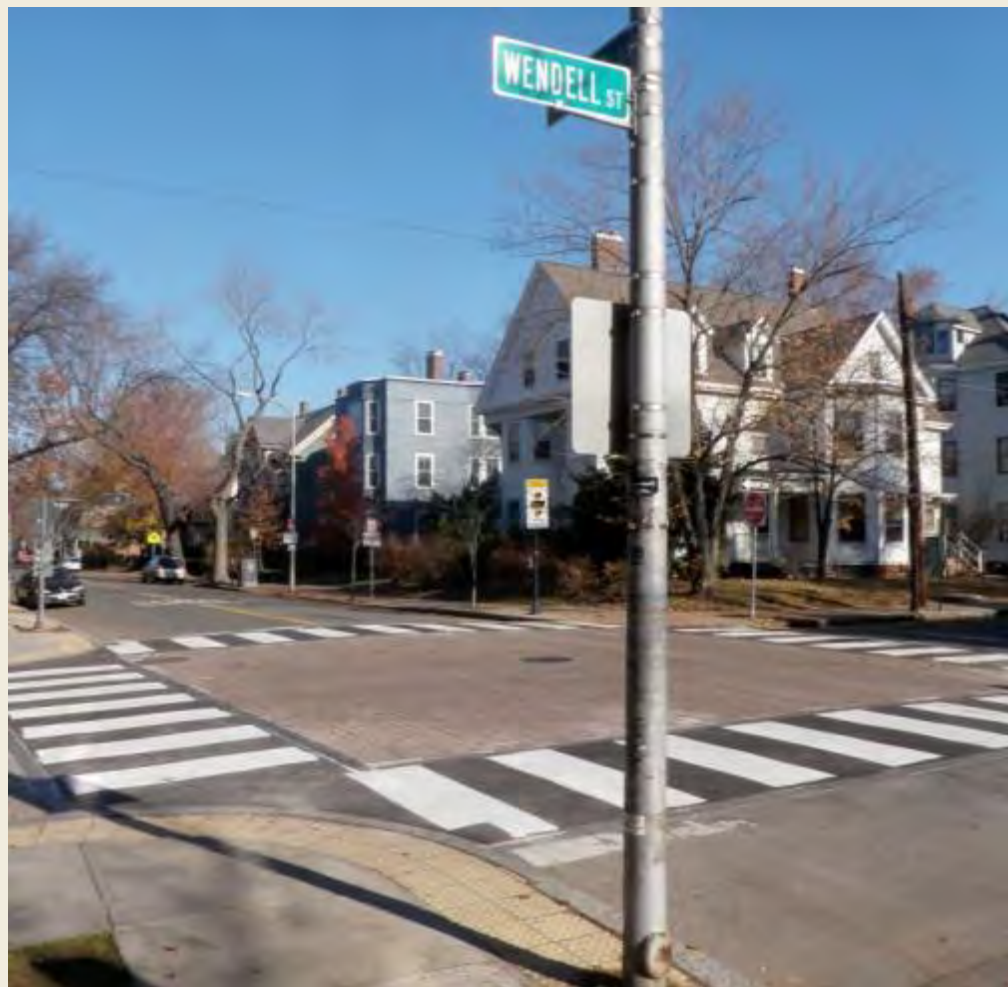
Fresh Pond Parkway at Huron Avenue - Existing



Fresh Pond Parkway at Huron Avenue - Proposed



Raised vs. Stamped Intersections



Fresh Pond Parkway at Larch Street - Existing



Fresh Pond Parkway at Larch Street - Proposed



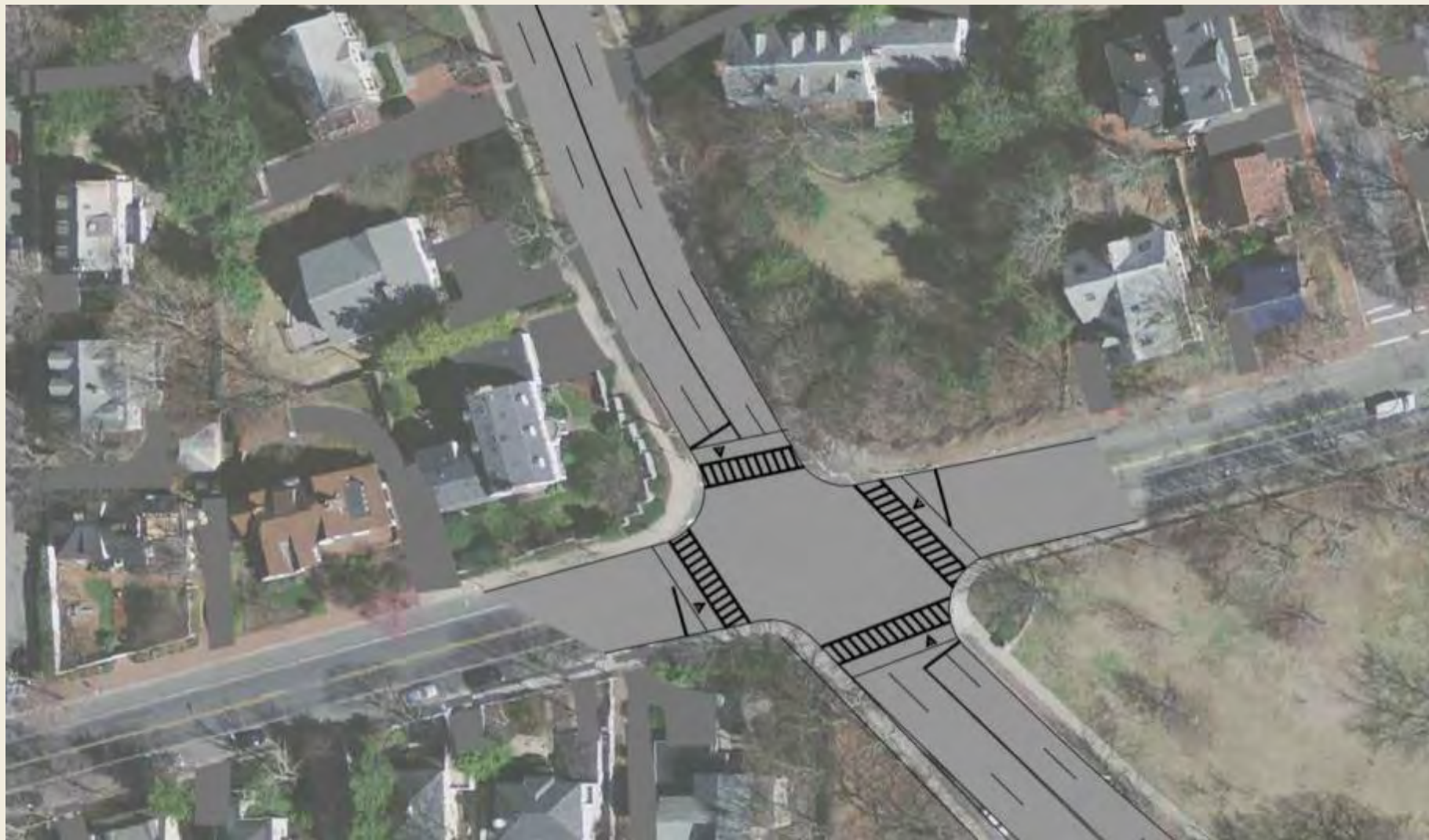
Rectangular Rapid Flashing Beacon



Fresh Pond Parkway at Brattle Street - Existing



Fresh Pond Parkway at Brattle Street - Proposed



Fresh Pond Parkway Draft Concept Takeaways

- Pedestrian-centric intersections and tighter turning radii at Brattle St. and at Huron Ave.
- New crossing with Rectangular Rapid Flashing Beacon at Larch Rd.
- Left turns at Larch impeded.
- Private property owners can contribute to traffic calming.
- Edge improvements possible.

Pedestrian Context with Fence



Pedestrian Context without Fence



Motor Vehicle Context with Fence



Traffic Calming – Street Trees



Traffic Calming – Street Tree Opportunities



Traffic Calming – Planting Strips



Traffic Calming – Adding Pedestrian Context





Plaza Design Charrette

Break Out Groups: Design Charrette



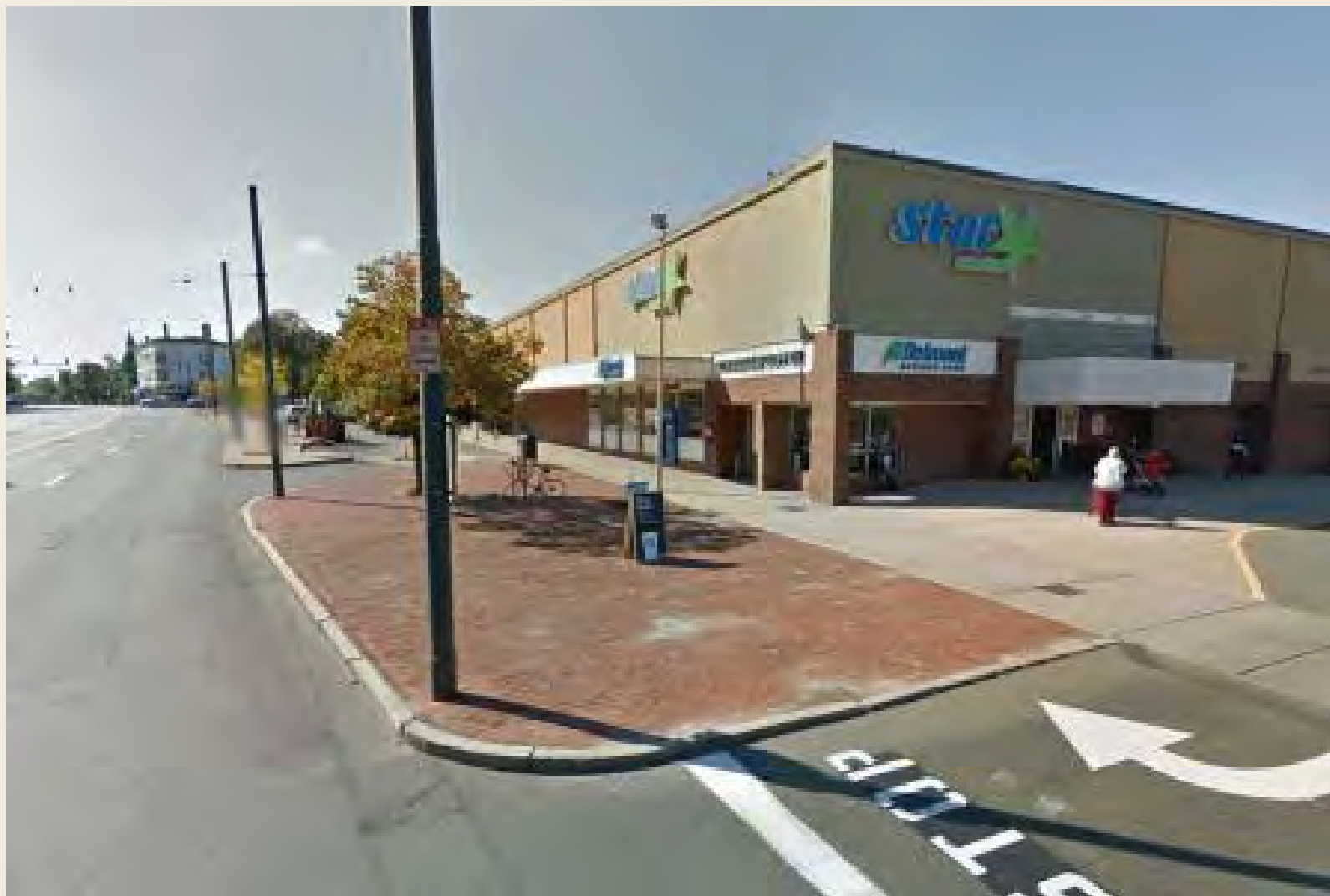
Break Out Groups: Design Charrette



Break Out Groups: Design Charrette



Break Out Groups: Design Charrette



Break Out Groups: Design Charrette



Break Out Groups: Design Charrette



Break Out Groups: Design Charrette



Break Out Groups: Design Charrette

- Possible Goals:
 - Gateway to Strawberry Hill Neighborhood
 - Social Activity
 - Bring more customers to local businesses
 - Create a new open space



Next Steps

- Next Stakeholder Meeting: September 15
- Next Public Meeting – early November
 - Discussion of proposed long and short term improvements



For More Information:

- **Project Website:** www.mass.gov/dcr/mt-auburn-corridor-study
- **If you have comments or suggestions on this project:**
 - *Submit online at:* <http://www.mass.gov/eea/agencies/dcr/public-outreach/submit-public-comments/>
 - *Write:* Department of Conservation and Recreation, Office of Public Outreach, 251 Causeway Street, Suite 600, Boston, MA 02114
 - *Deadline (pertaining to this meeting): Thursday, 9/1/16*
 - *Note: Public comments submitted to DCR may be posted on the DCR website in their entirety.*
- If you have questions, please email:
MaryCatherine.McLean@massmail.state.ma.us