

NEW HAMPSHIRE

Ashburnham  
State Forest

Mount Watatic  
Reservation

Ashby Wildlife  
Management Area

Watatic Mountain  
Wildlife Sanctuary

ASHBY  
ASHBURNHAM

# Mount Watatic Reservation

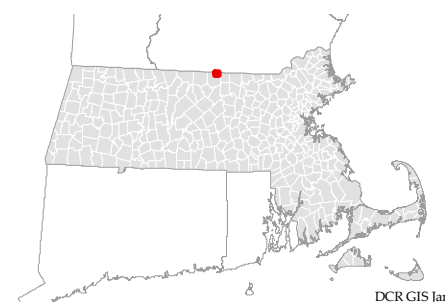
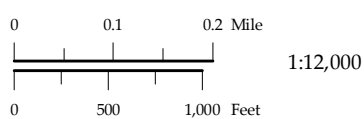
## 2001 Orthophotography

dcr  
Massachusetts

This is a report-sized  
version of a larger map.  
Please refer to the  
full-sized map for more  
detailed information.



- Mount Watatic Reservation
- Abutting Open Space
- Town Boundary



Geographic data supplied by: Office of Geographic and Environmental Information (MassGIS) and DCR GIS, Commonwealth of Massachusetts Executive Office of Energy and Environmental Affairs.

NEW HAMPSHIRE

Ashburnham State Forest

Mount Watatic Reservation

Ashby Wildlife Management Area

Watatic Mountain Wildlife Sanctuary

ASHBY  
ASHBURNHAM

# Mount Watatic Reservation

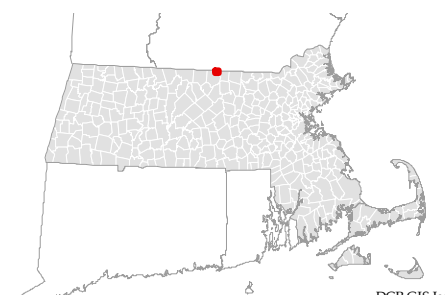
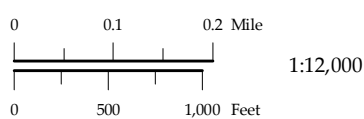
## 2005 Orthophotography

dcr  
Massachusetts

This is a report-sized version of a larger map. Please refer to the full-sized map for more detailed information.

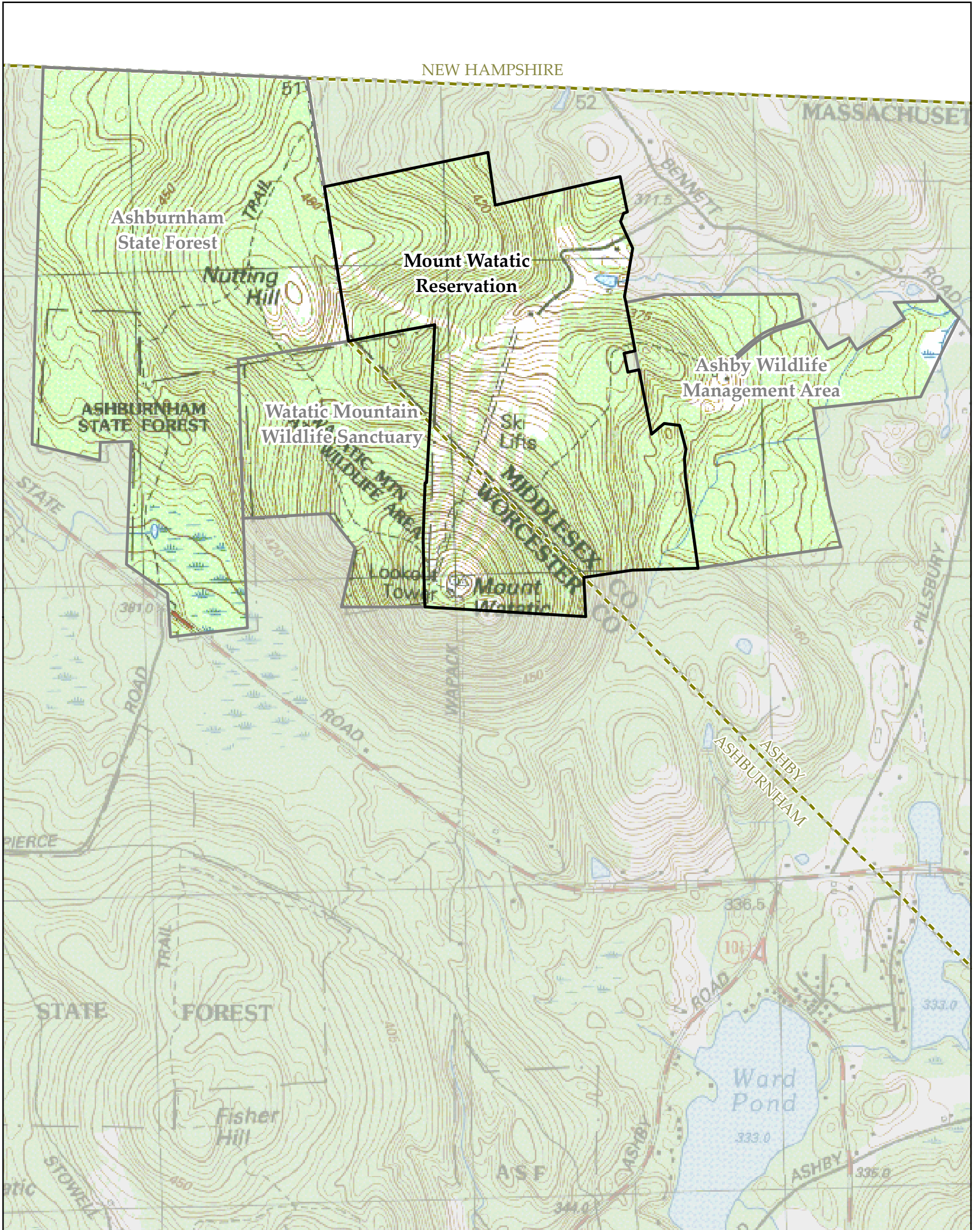


- Mount Watatic Reservation
- Abutting Open Space
- Town Boundary



Geographic data supplied by: Office of Geographic and Environmental Information (MassGIS) and DCR GIS, Commonwealth of Massachusetts Executive Office of Energy and Environmental Affairs.

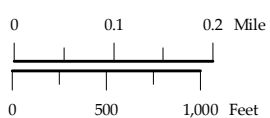
DCR GIS Jan-07



# Mount Watatic Reservation

## USGS Topographic Quadrangles

- Mount Watatic Reservation
- Abutting Open Space
- Town Boundary

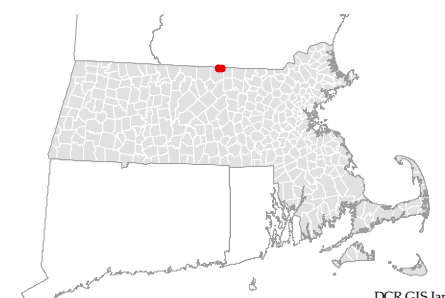


1:12,000

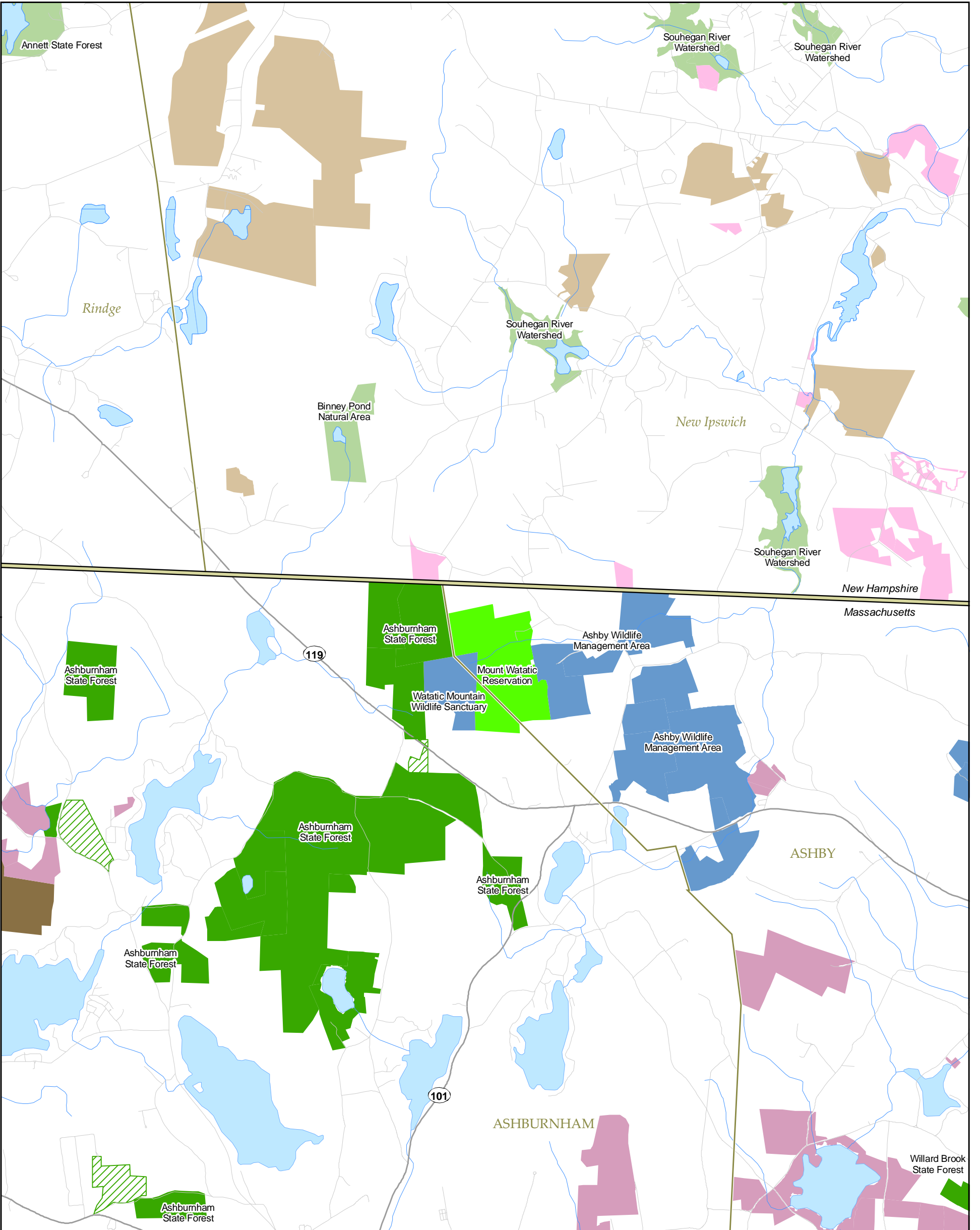
**dcr**  
Massachusetts



*This is a report-sized version of a larger map. Please refer to the full-sized map for more detailed information.*



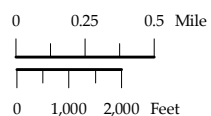
Geographic data supplied by: Office of Geographic and Environmental Information (MassGIS) and DCR GIS, Commonwealth of Massachusetts Executive Office of Energy and Environmental Affairs.



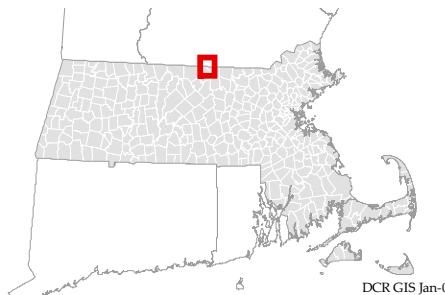
- Town Boundary
- Interstate Boundary
- Major Road
- Minor Road
- River or Stream
- Lake or Pond
- Massachusetts Fee Interest
- Mount Watatic Reservation
- DCR State Parks
- Department of Fish and Game
- Municipal
- Non-Profit
- Massachusetts Deed Restriction
- DCR State Parks
- Non-Profit
- New Hampshire Open Space
- State Agency
- Municipal/County
- Other Public/Quasi-Public Entity
- Private Organization

## Mount Watatic Reservation Regional Open Space

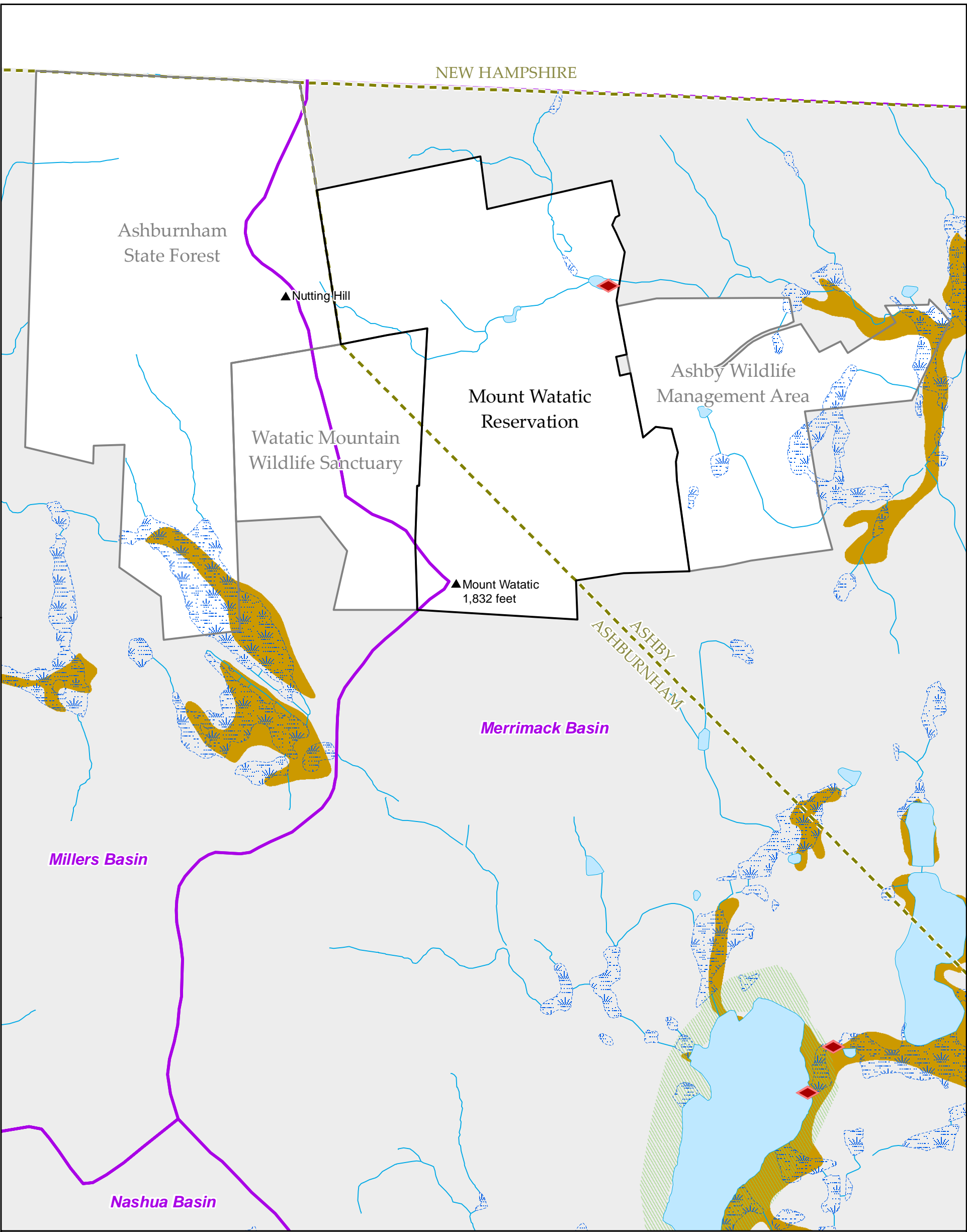
**dcr**  
Massachusetts  
*This is a report-sized version of a larger map. Please refer to the full-sized map for more detailed information.*



1:44,000



Geographic data supplied by: Office of Geographic and Environmental Information (MassGIS) and DCR GIS, Commonwealth of Massachusetts Executive Office of Energy and Environmental Affairs and New Hampshire GRANIT.

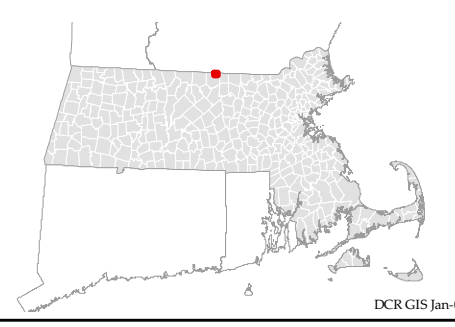
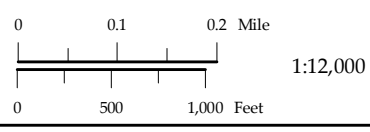


23

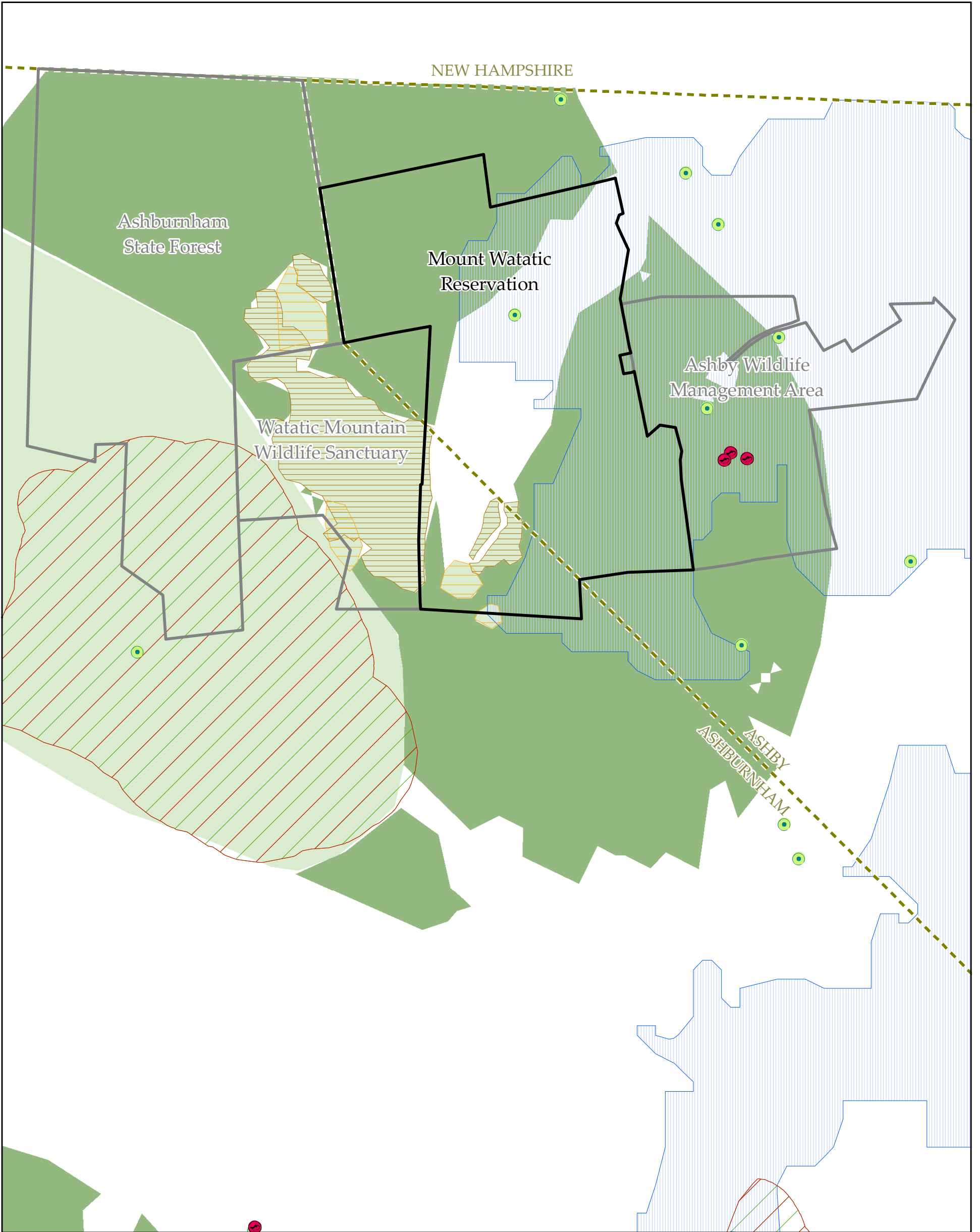
## Mount Watatic Reservation Water Resources

**dcr**  
Massachusetts  
This is a report-sized version of a larger map. Please refer to the full-sized map for more detailed information.

- Dam
- Shoreline
- Wetland Limit
- Hydrologic Connection
- Open Water
- Wetland
- Town Boundary
- Mount Watatic Reservation
- Abutting Open Space
- Major Drainage Basin
- 100-Year Flood Zone
- Medium Yield Aquifer



Geographic data supplied by: Office of Geographic and Environmental Information (MassGIS) and DCR GIS, Commonwealth of Massachusetts Executive Office of Energy and Environmental Affairs.

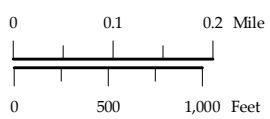


- NHESP Certified Vernal Pool
- NHESP Potential Vernal Pool
- NHESP Priority Habitat of Rare Species
- NHESP Estimated Habitat of Rare Wildlife
- NHESP Living Waters Critical Supporting Watershed
- NHESP Natural Community
  - Acidic Rocky Summit / Rock Outcrop Community
  - Red Spruce - Fir - Northern Hardwoods Forest
  - NHESP BioMap Core Habitat
  - NHESP BioMap Supporting Natural Landscape
- Mount Watatic Reservation
- Abutting Open Space
- Town Boundary

# Mount Watatic Reservation

## Priority Natural Resources

Natural Heritage & Endangered Species Program Data

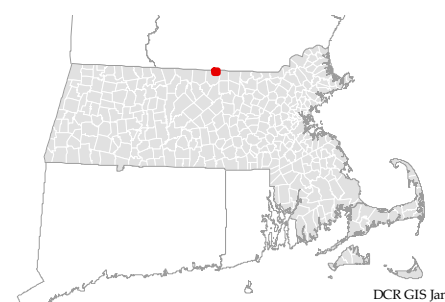


1:12,000

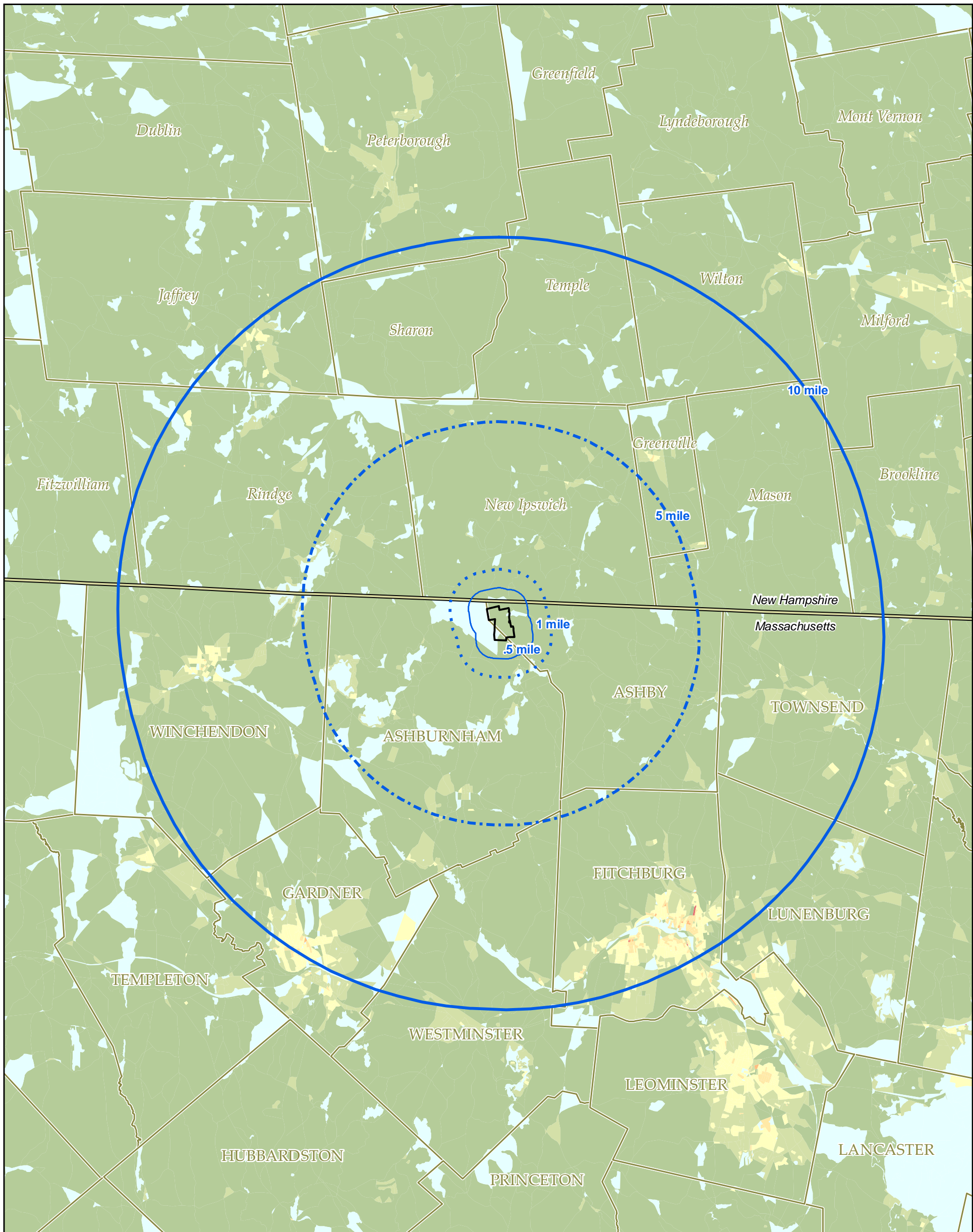
**dcr**  
Massachusetts



*This is a report-sized version of a larger map. Please refer to the full-sized map for more detailed information.*



Geographic data supplied by: Office of Geographic and Environmental Information (MassGIS) and DCR GIS, Commonwealth of Massachusetts Executive Office of Energy and Environmental Affairs.



# Mount Watatic Reservation

## Demographics

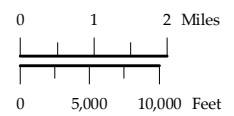
US Census 2000 Block Level Data

- Census Block (2000)
- Population per acre
- Uninhabited
- < 1
- 1 - 5
- 6 - 20
- 21 - 50
- 51 - 100
- 101 +

- Interstate Boundary
- Mount Watatic Reservation
- Town Boundary
- Measurement Interval (.5, 1, 5, 10 Mile)

	MA Residents	NH Residents
.5 Mile	90	50
1 Mile	300	190
5 Mile	6,620	4,960
10 Mile	73,770	19,510

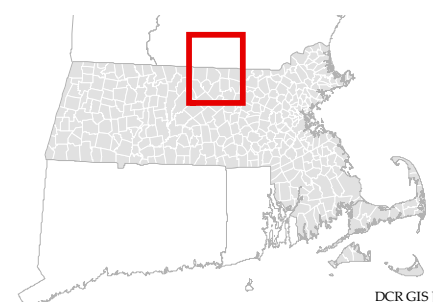
Rounded to the nearest 10 residents.



1:166,000

**dcr**  
Massachusetts

This is a report-sized version of a larger map. Please refer to the full-sized map for more detailed information.



Geographic data supplied by: Office of Geographic and Environmental Information (MassGIS) and DCR GIS, Commonwealth of Massachusetts Executive Office of Energy and Environmental Affairs and Division of Forests and Lands, New Hampshire Department of Resources and Economic Development.

NEW HAMPSHIRE

Ashburnham State Forest

Mount Watatic Reservation

Ashby Wildlife Management Area

Watatic Mountain Wildlife Sanctuary

ASHBY  
ASHBURNHAM

119

101

STOWELL ROAD

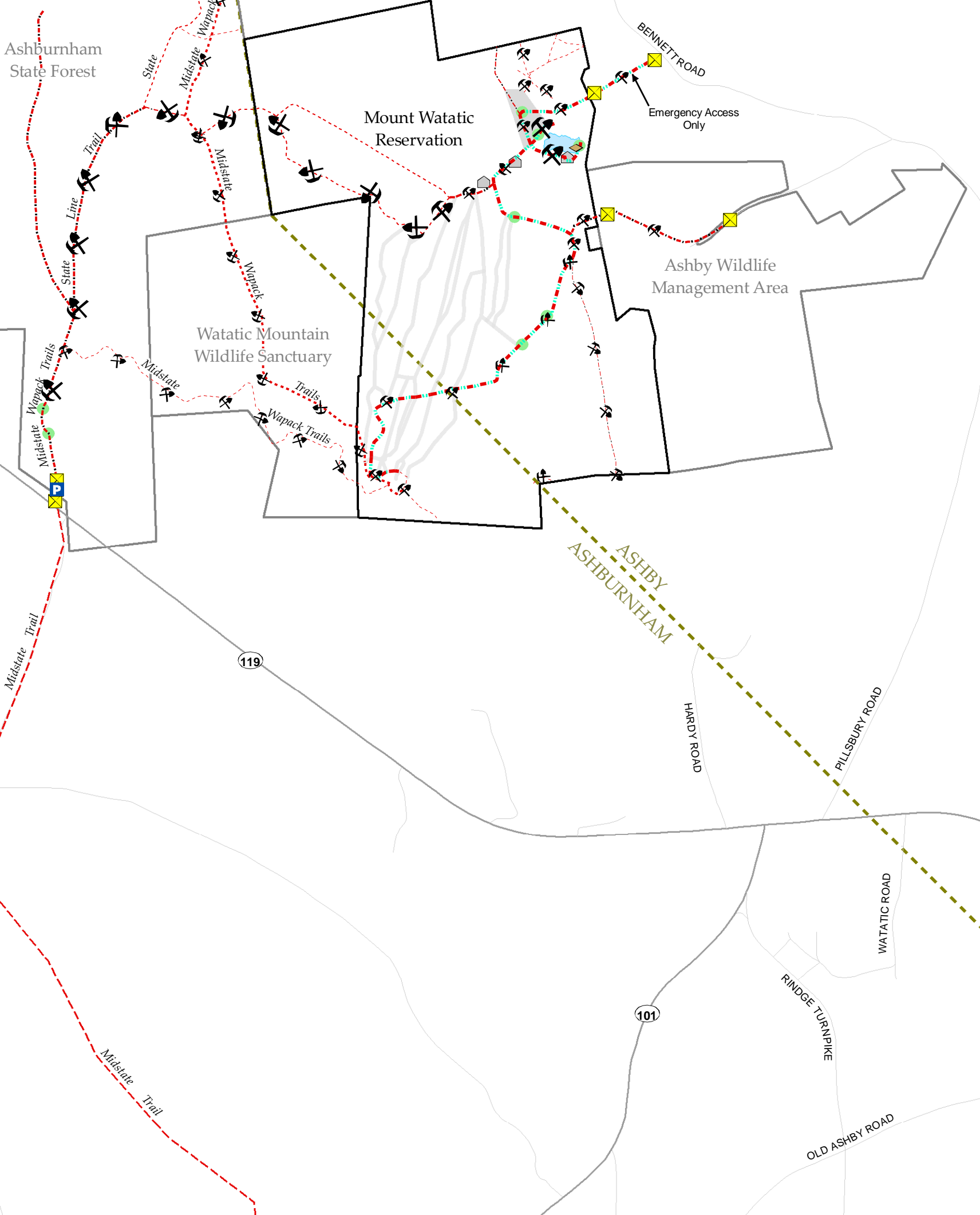
HARDY ROAD

PILLSBURY ROAD

WATATIC ROAD

RINDGE TURNPIKE

OLD ASHBY ROAD



- Trail Condition - Fair\*
- Trail Condition - Poor\*
- Dam
- Gate
- Parking Area
- Structure or Foundation
- Road Culvert
- Former Ski Area Parking Lot
- Former Snow Making Pond
- Mount Watatic Reservation
- Abutting Open Space
- Former Ski Slope
- Town Boundary
- Major Road
- Minor Road
- Trail, Natural, 0 - 5'
- Trail, Natural, 5' - 10'
- Trail, Natural, 10' - 15'
- Forest Rd./Trail, Natural, 3' - 5'
- Forest Rd./Trail, Natural, 5' - 10'
- Forest Rd./Trail, Natural, 10' - 15'
- Forest Rd./Trail, Proc. Gravel, 10' - 15'
- Admin. Rd., Proc. Gravel, 15' - 20'
- Midstate Trail (Outside of Property)

\* Trails without a condition symbol are in good condition.  
 Geographic data supplied by: Office of Geographic and Environmental Information (MassGIS) and DCR GIS, Commonwealth of Massachusetts Executive Office of Energy and Environmental Affairs.

## Mount Watatic Reservation

### Recreation / Public Access

Infrastructure



0 0.1 0.2 Mile

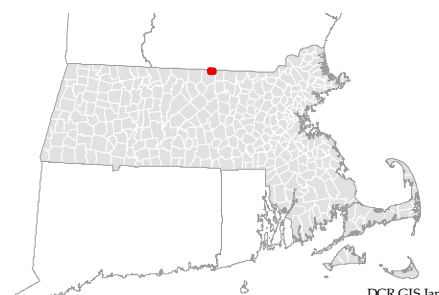
0 500 1,000 Feet

1:12,000

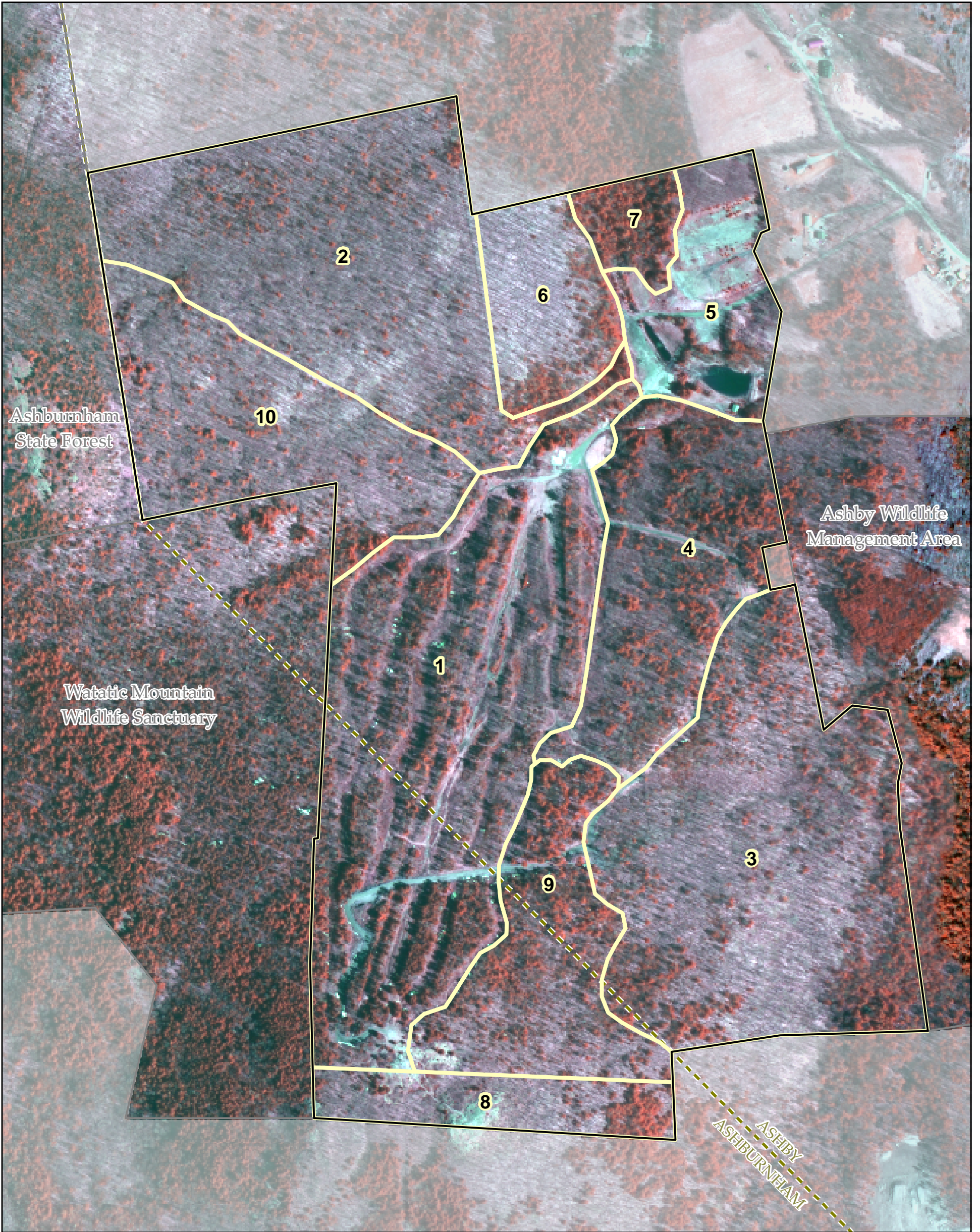
dc  
Massachusetts



This is a report-sized version of a larger map. Please refer to the full-sized map for more detailed information.





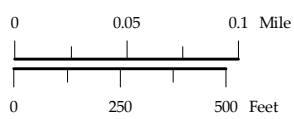


# Mount Watatic Reservation

## Forest Stands

2005 Near Infrared Orthophotography

- Mount Watatic Reservation
- Abutting Open Space
- Forest Type Boundary
- Town Boundary

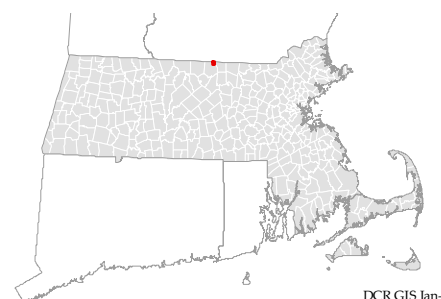


1:5,500

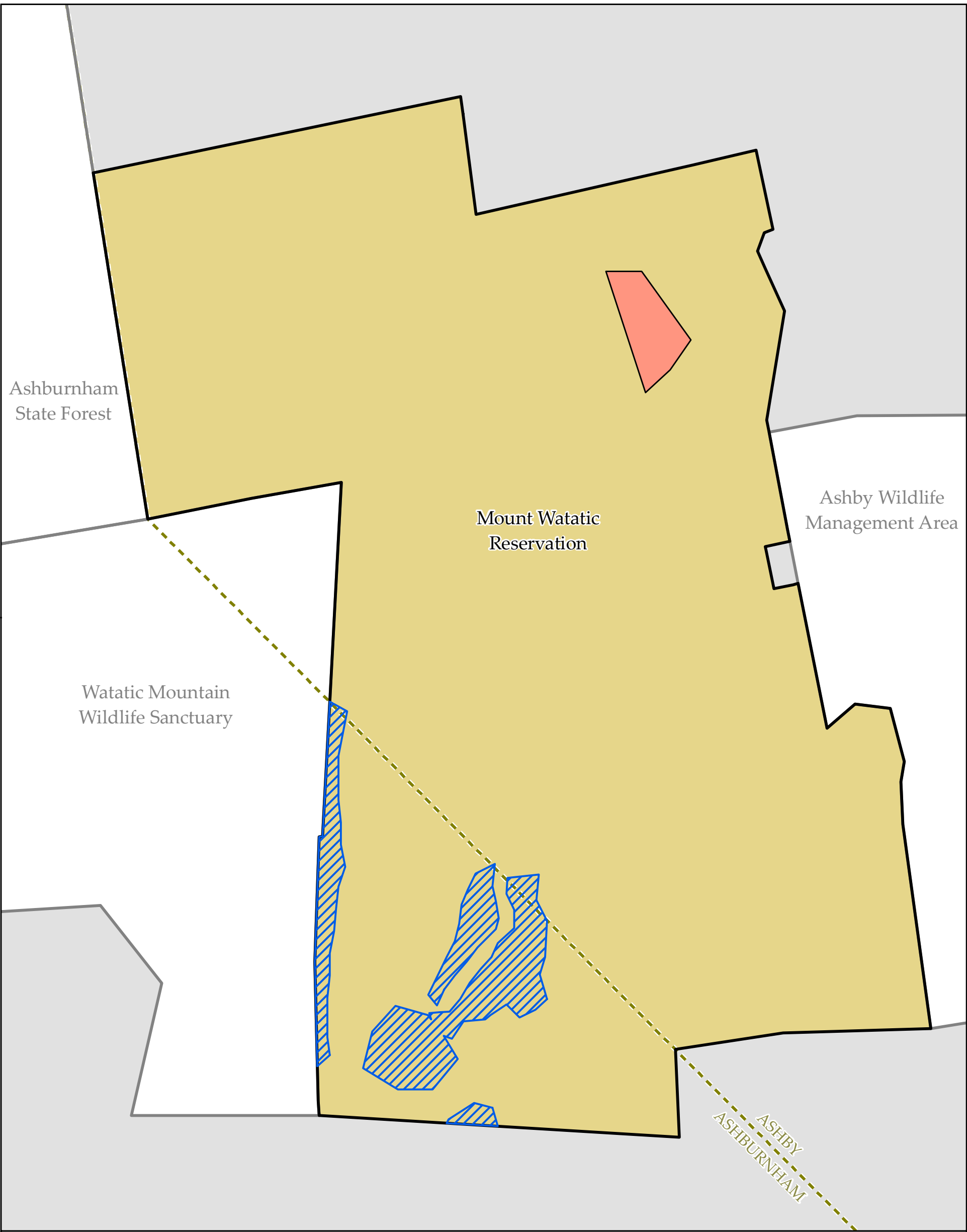
**dcr**  
Massachusetts



*This is a report-sized version of a larger map. Please refer to the full-sized map for more detailed information.*



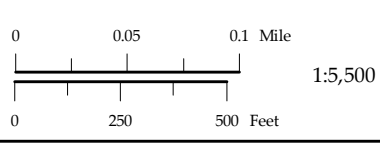
Geographic data supplied by: Office of Geographic and Environmental Information (MassGIS) and DCR GIS, Commonwealth of Massachusetts Executive Office of Energy and Environmental Affairs.



## Mount Watatic Reservation Land Stewardship Zoning

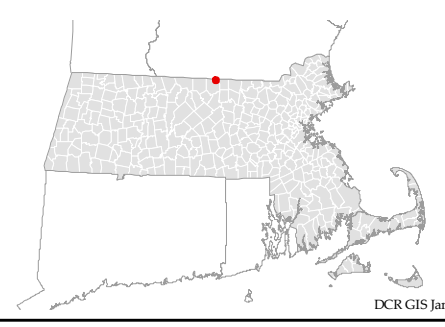
- Significance Overlay
  - Acidic Rocky Summit/ Rock Outcrop Community
  - Red Spruce - Fir - Northern Hardwoods Forest
- Zone 3
- Zone 2
- Mount Watatic Reservation
- Abutting Open Space
- Town Boundary

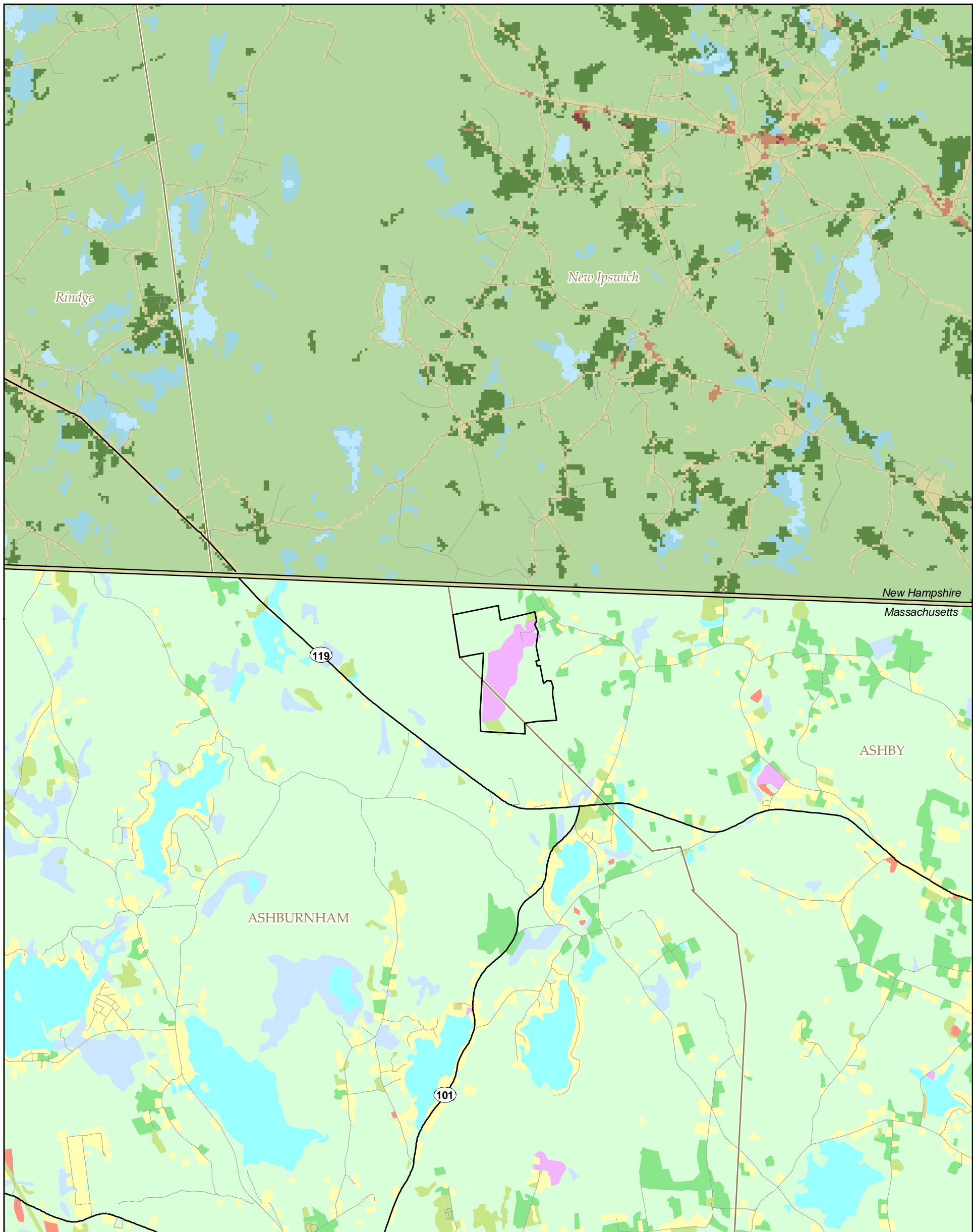
Geographic data supplied by: Office of Geographic and Environmental Information (MassGIS) and DCR GIS, Commonwealth of Massachusetts Executive Office of Energy and Environmental Affairs.



**dcr**  
Massachusetts

*This is a report-sized version of a larger map. Please refer to the full-sized map for more detailed information.*





- |                               |                               |
|-------------------------------|-------------------------------|
| Mount Watatic Reservation     | Massachusetts Land Use (1999) |
| Town Boundary                 | Forest                        |
| Interstate Boundary           | Agriculture                   |
| Major Road                    | Open Land                     |
| Minor Road                    | Wetland                       |
| New Hampshire Land Use (2001) | Water                         |
| Water                         | Recreation*                   |
| Low Intensity                 | Low Density Residential       |
| Medium Intensity              | High Density Residential      |
| High Intensity                | Intensive Use                 |
| Forest                        |                               |
| Agriculture                   |                               |
| Wetland                       |                               |

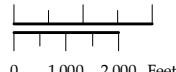
\* Mount Watatic Reservation no longer contains an active recreation site.

Geographic data supplied by: Office of Geographic and Environmental Information (MassGIS) and DCR GIS, Commonwealth of Massachusetts Executive Office of Energy and Environmental Affairs and MRLC Consortium.

## Mount Watatic Reservation Regional Land Use



0 0.25 0.5 Mile



1:44,000



This is a report-sized version of a larger map. Please refer to the full-sized map for more detailed information.

