

# Multifamily Energy Metrics - eQuest

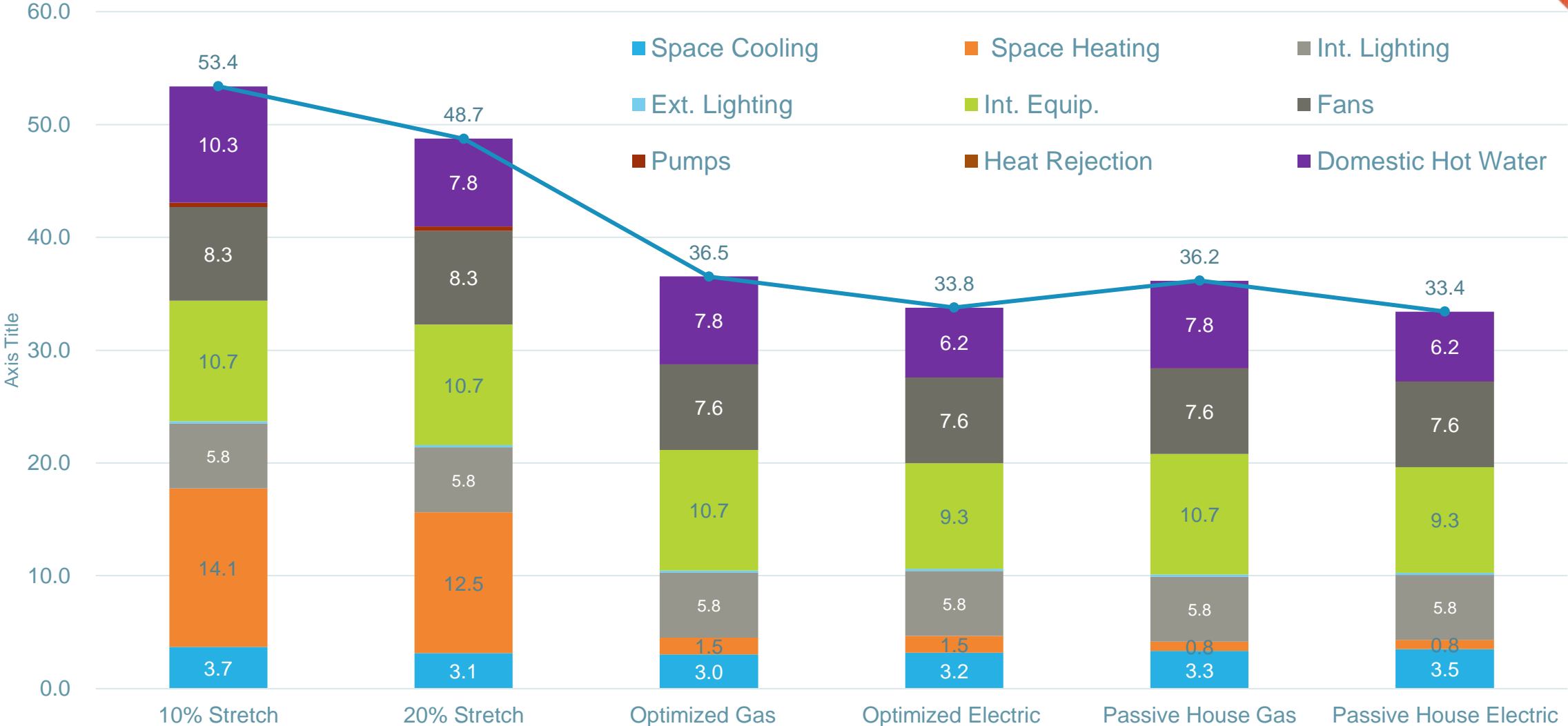


- Low-rise, Midrise, Highrise:
  - Site EUI – by energy end use
  - Source EUI – by energy end use
  - Space Heating/Cooling energy end use, and TEDI Heating/Cooling
  - Peak Heating Demand – by month
  - Peak Cooling Demand – by month

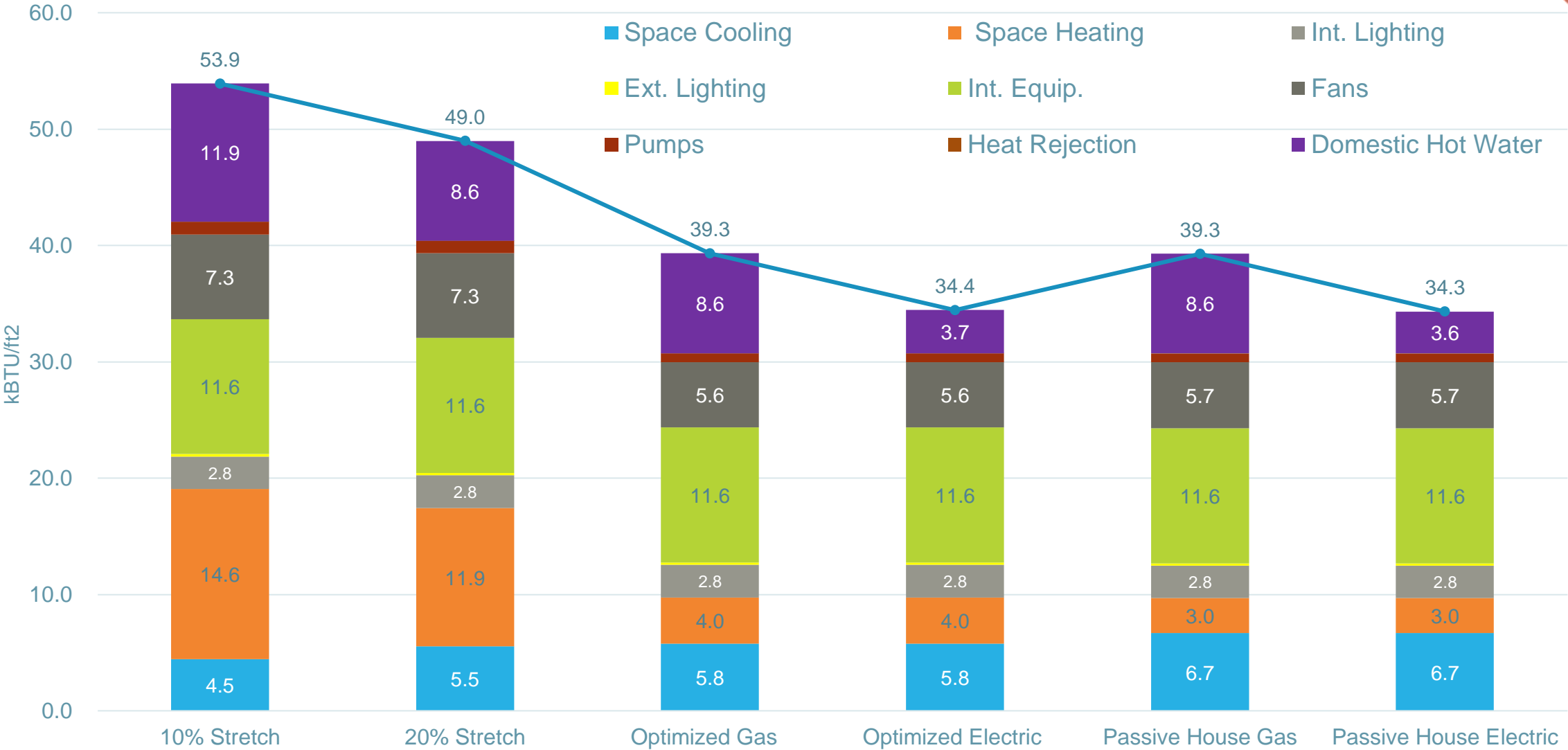
# Site EUI - Multi-Family (Low-rise)



# Site EUI - Multi-Family (Midrise)



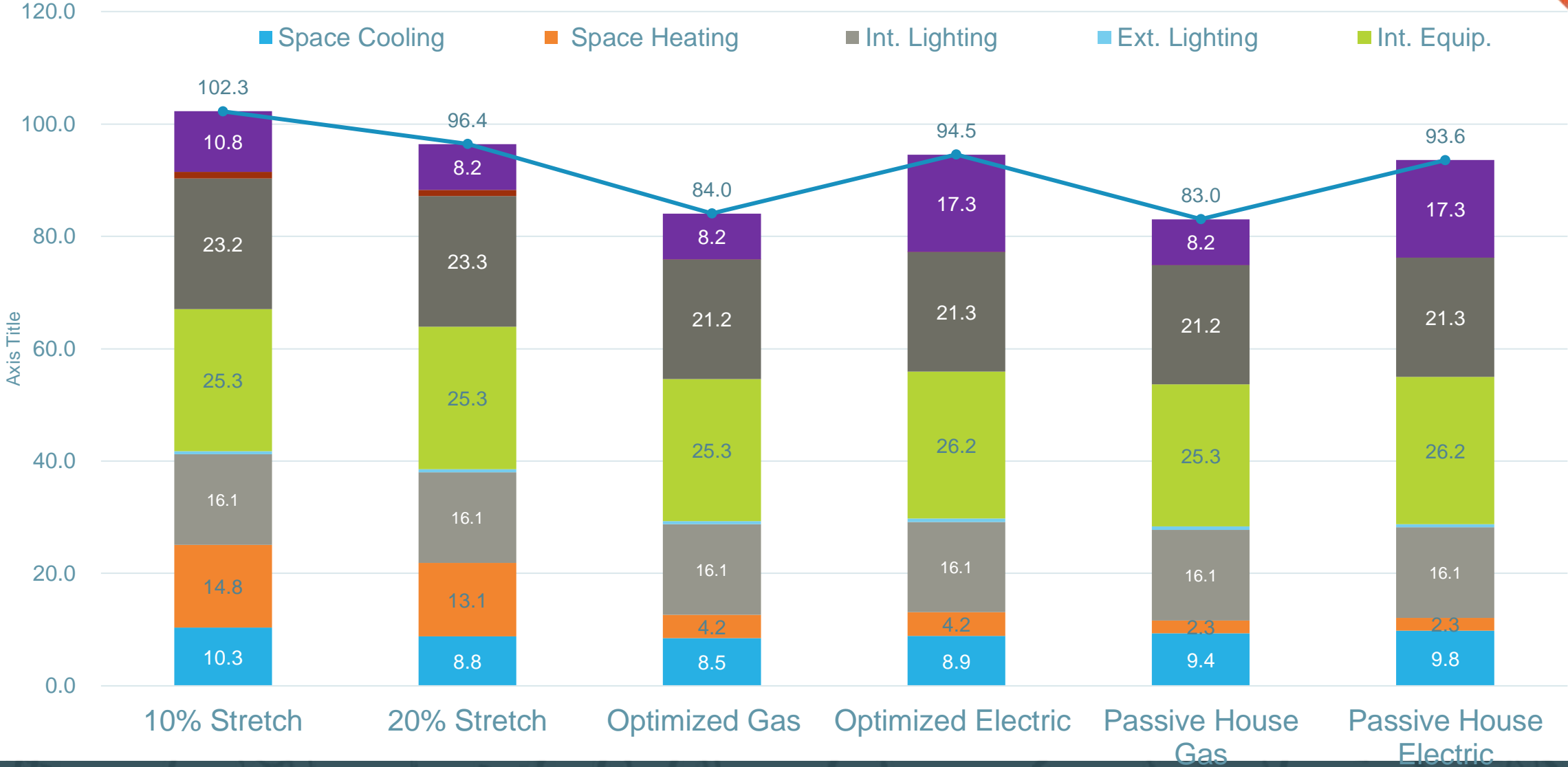
# Site EUI - Multi-Family (Highrise)



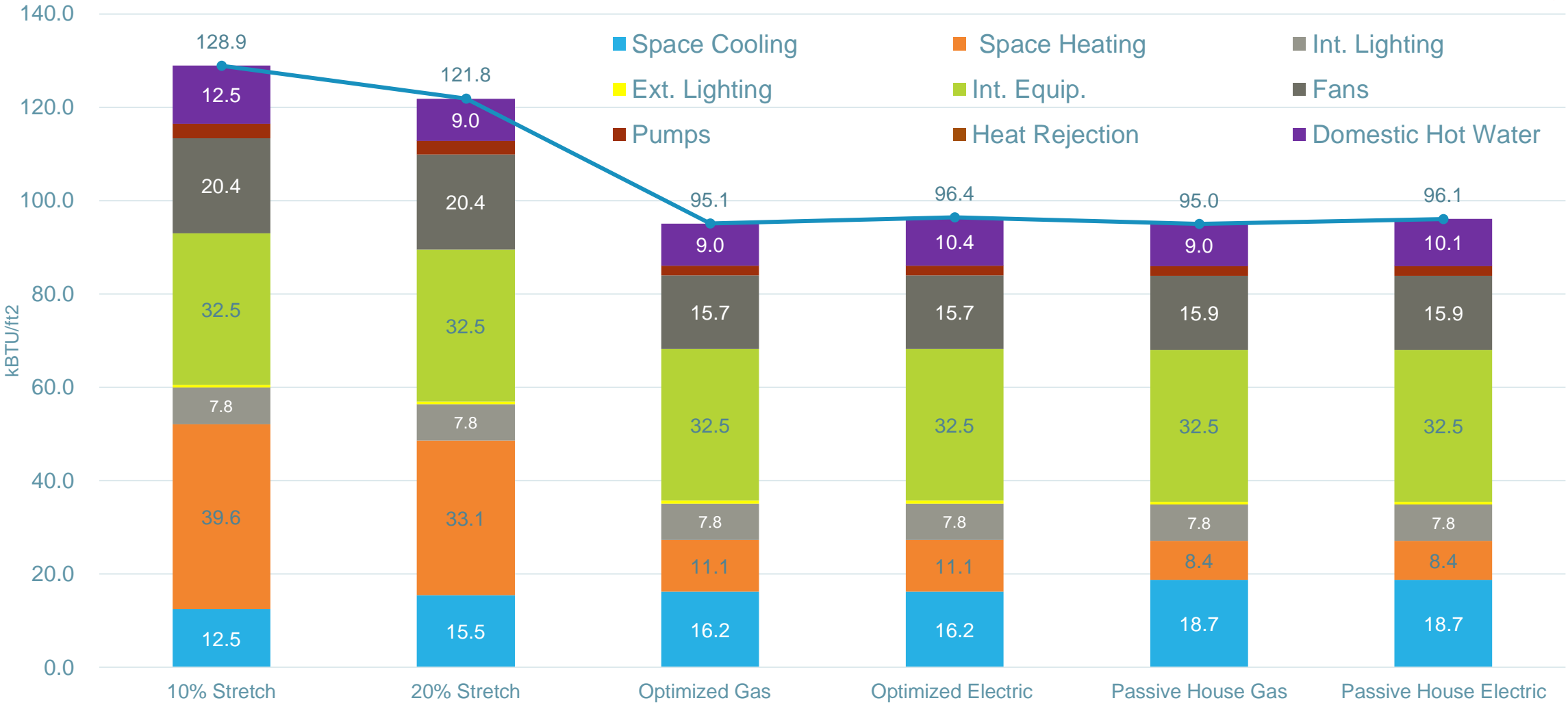
# Source EUI - Multi-Family (Lowrise)



# Source EUI - Multi-Family (Midrise)



# Source EUI - Multi-Family (Highrise)



# Multi-Family (Low Rise)

Heating / Cooling End Uses and TEDIs

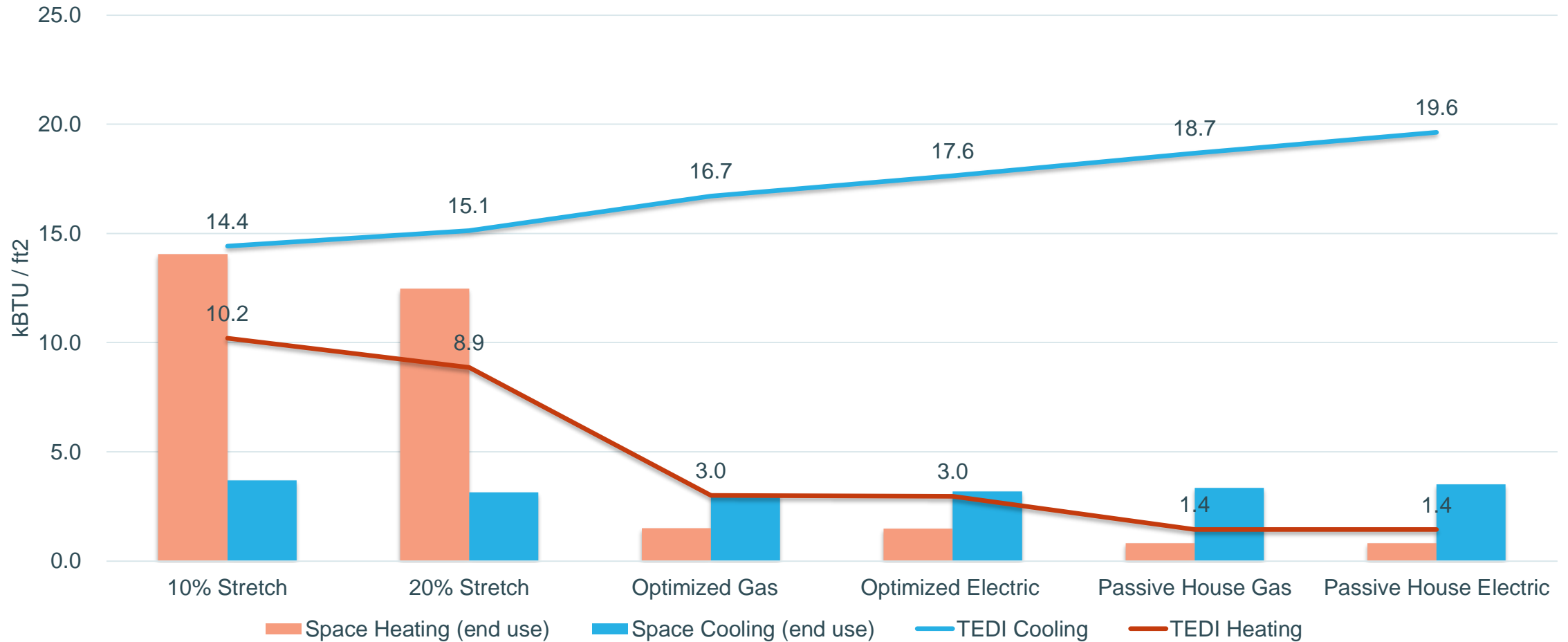




# Multi-Family (Mid Rise)



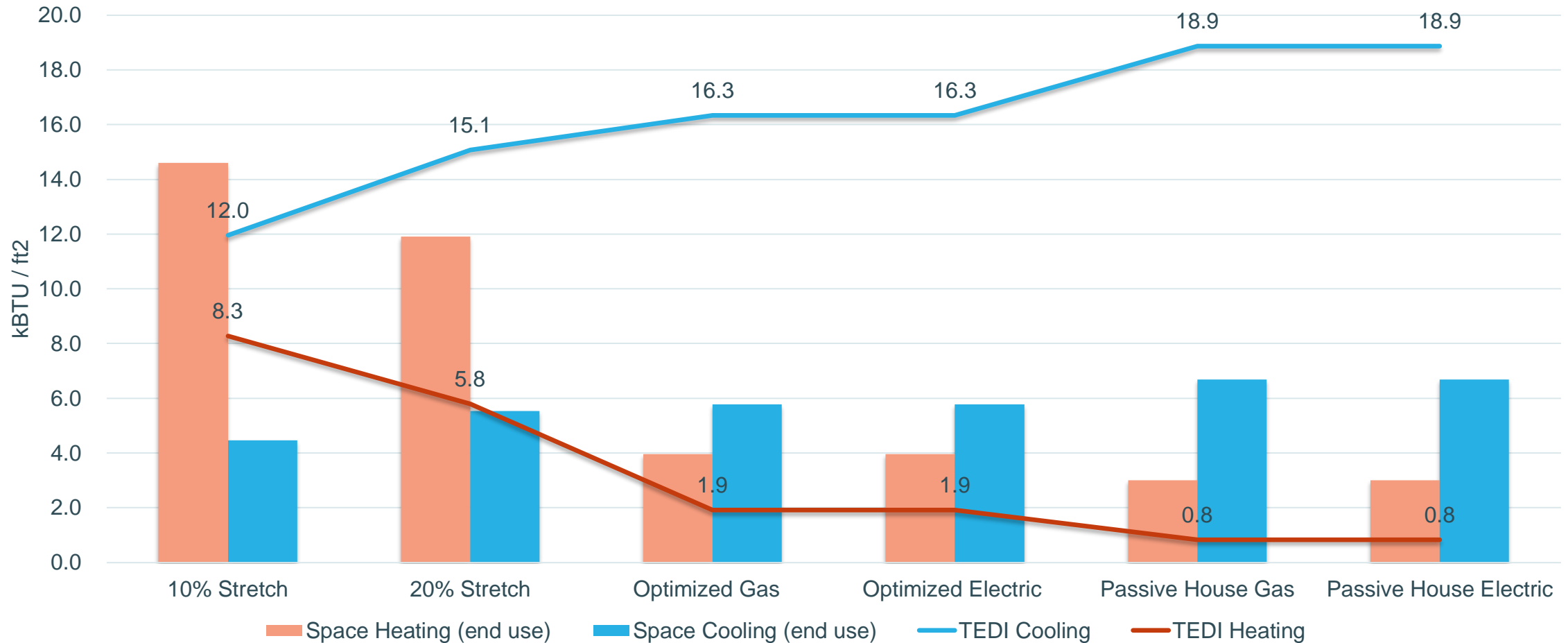
## Heating / Cooling End Uses and TEDIs



# Multi-Family (High Rise)



## Heating / Cooling End Uses and TEDIs



# Multi-Family (Low Rise)

## Peak Heating Demand - by Month



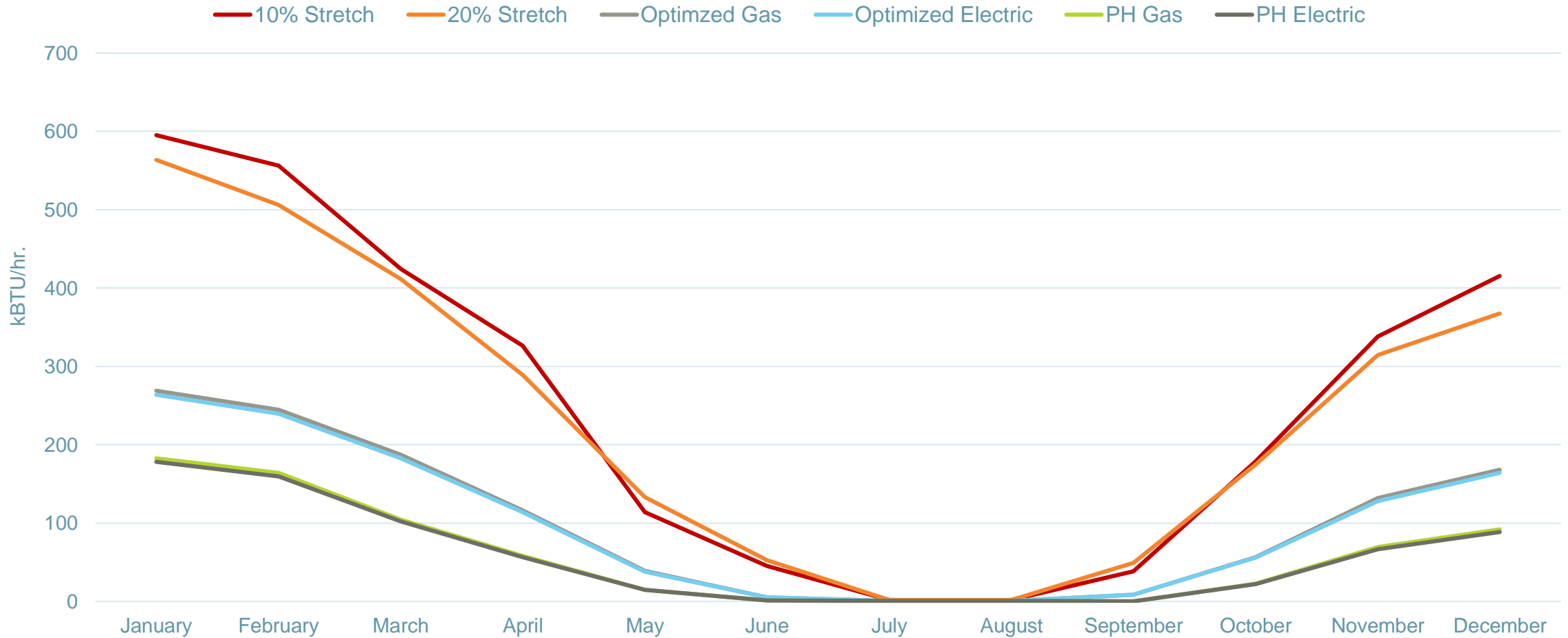
# Multi-Family (Low Rise)

## Peak Cooling Demand - by Month



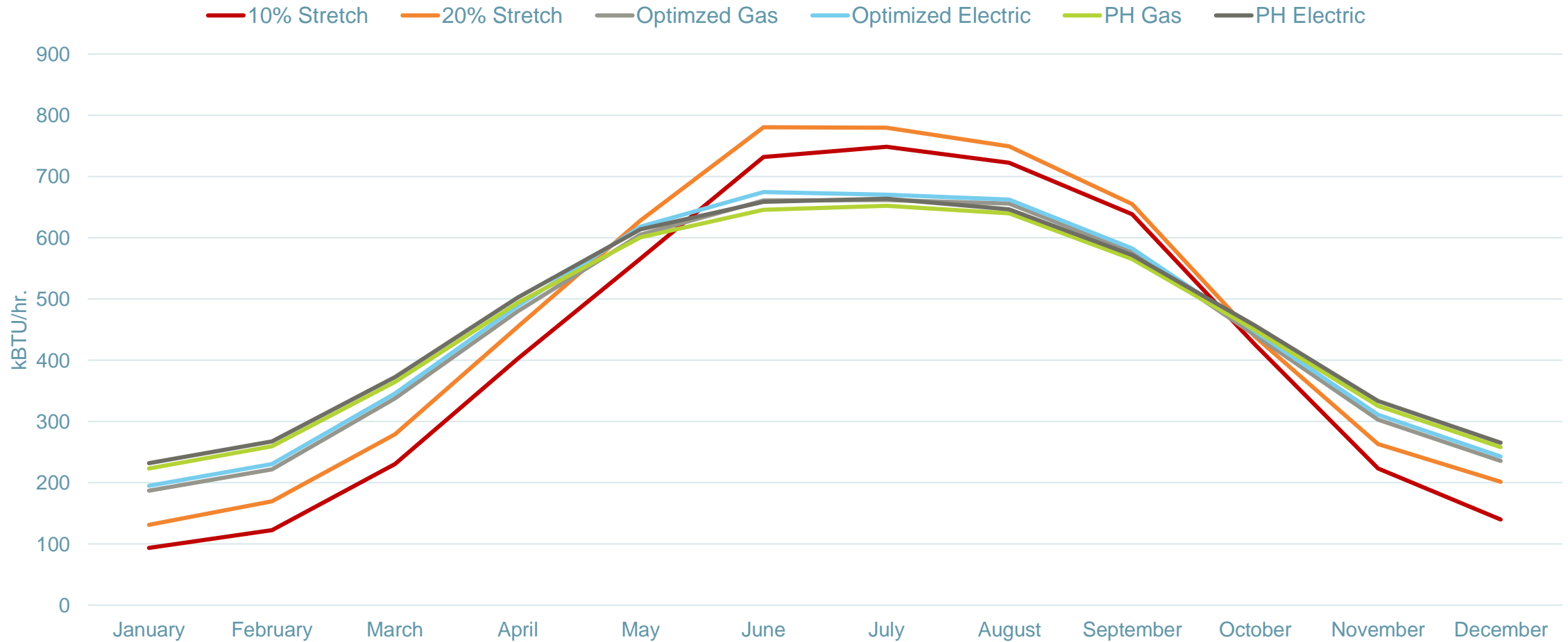
# Multi-Family (Mid Rise)

## Peak Heating Demand - by Month



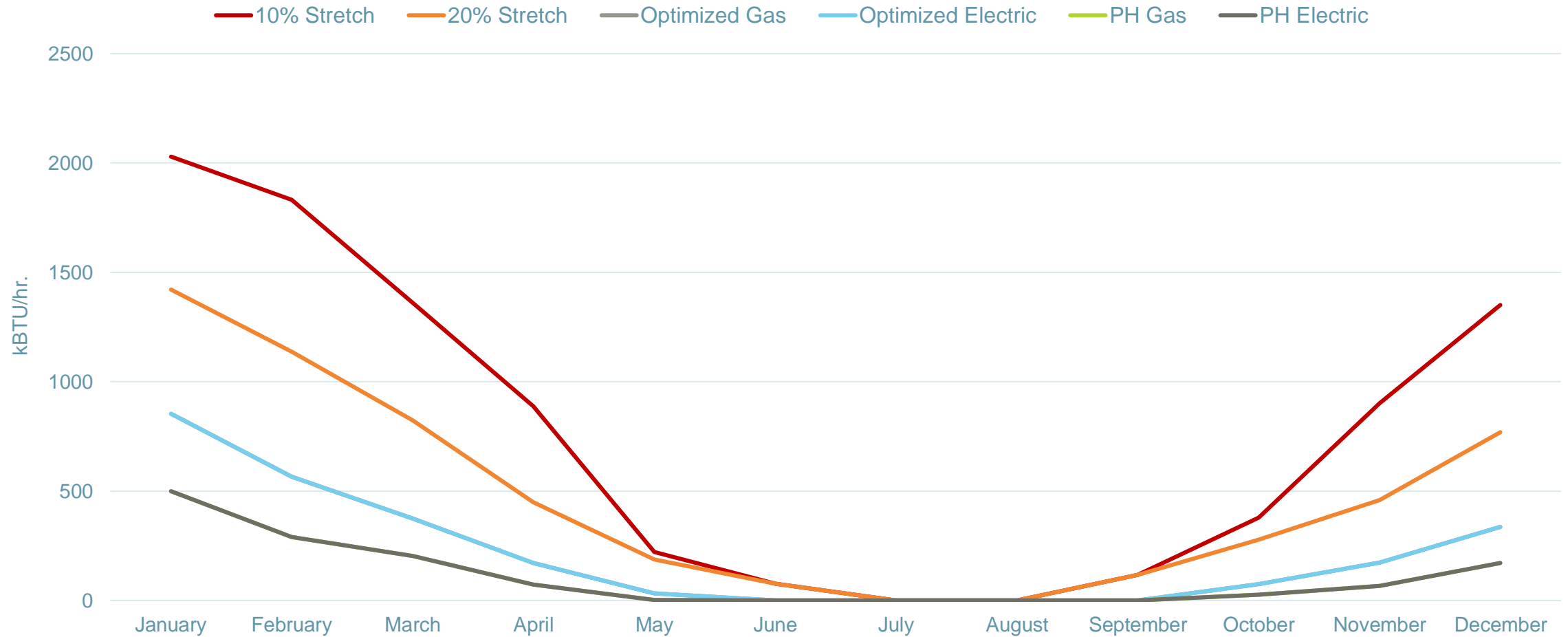
# Multi-Family (Mid Rise)

## Peak Cooling Demand - by Month



# Multi-Family (High Rise)

## Peak Heating Demand - by Month



# Multi-Family (High Rise)

## Peak Cooling Demand - by Month

