



I-90 ALLSTON INTERCHANGE A MULTIMODAL TRANSPORTATION PROJECT

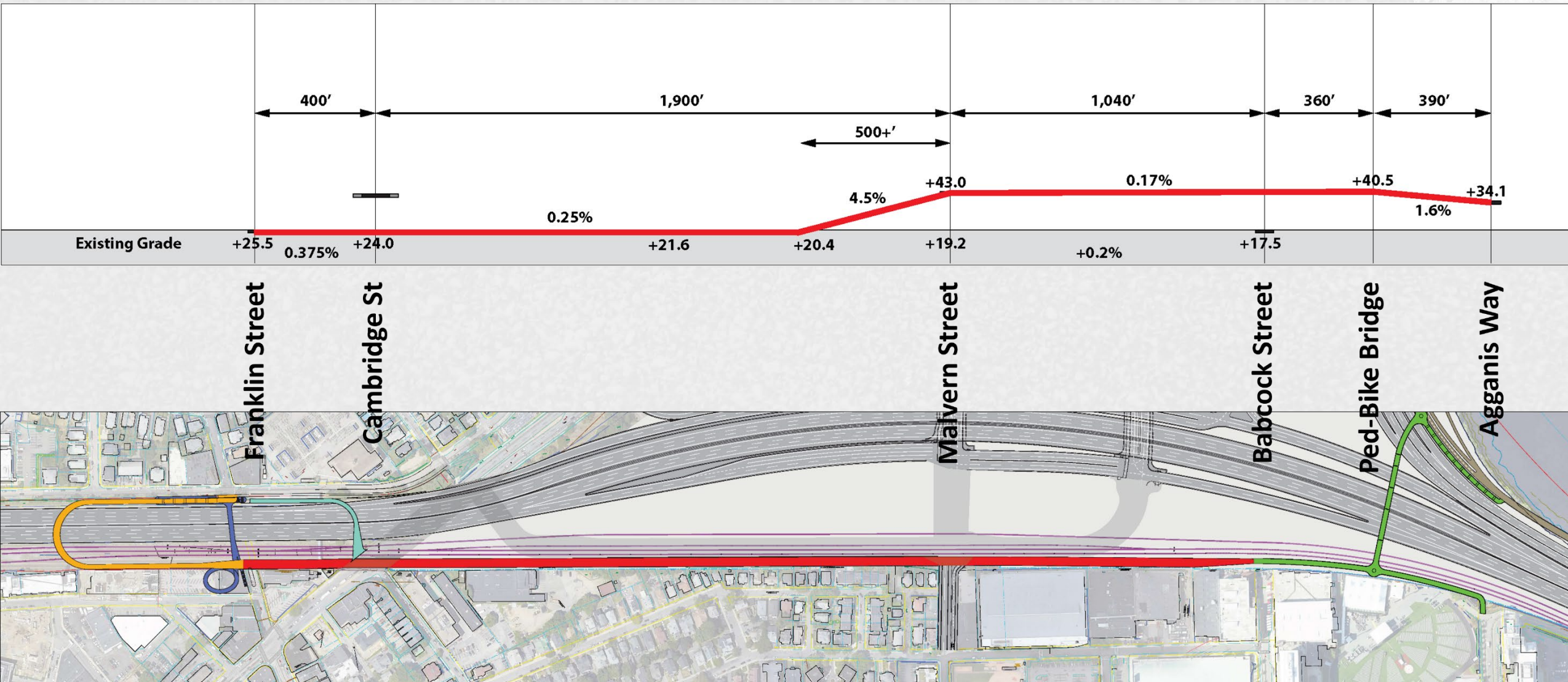
DRAFT FOR DISCUSSION PURPOSES ONLY – September 6, 2024



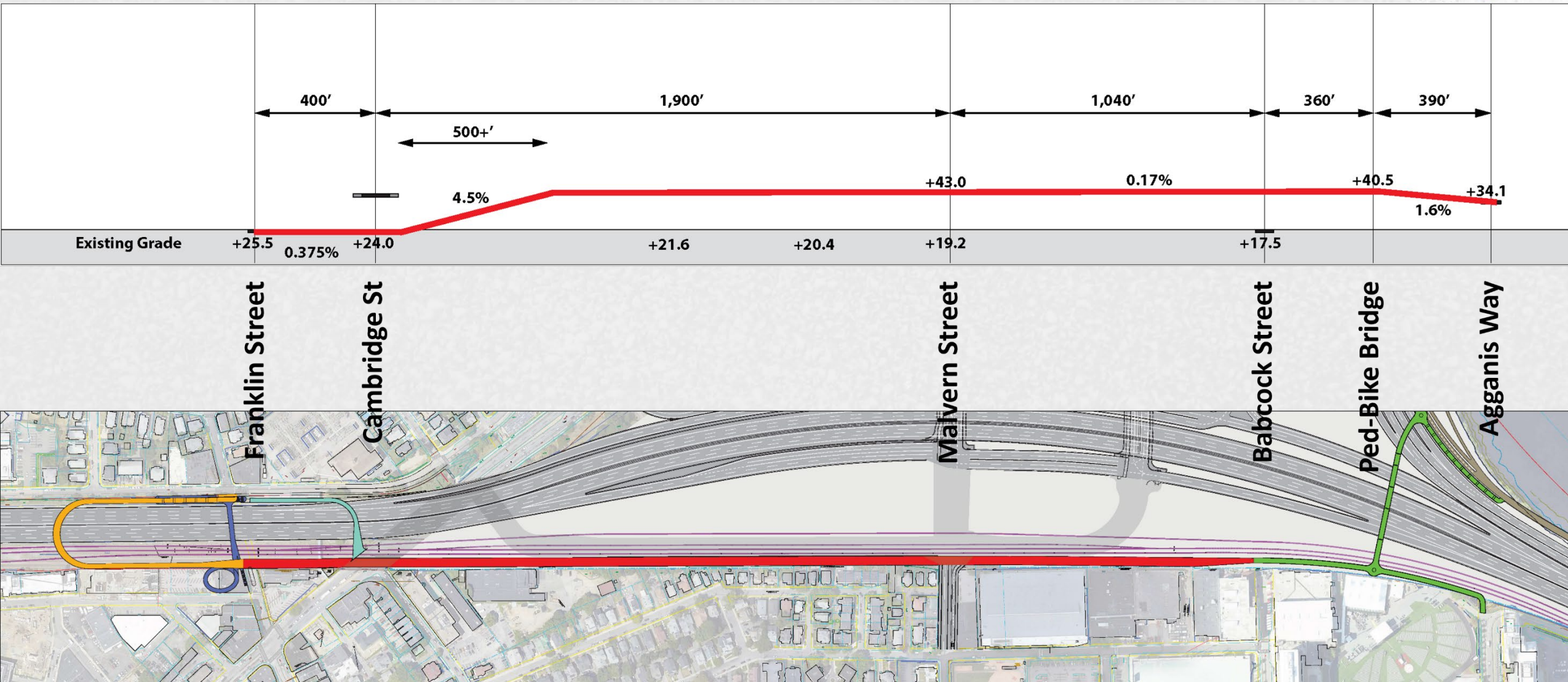
South Side Buffer Path Review Topics

- **Path Options and Considerations**
 - Potential connections at Cambridge Street
 - Proposed residential development
 - Connection at Malvern Street
 - A linear park concept
 - Minimizing the canyon effect

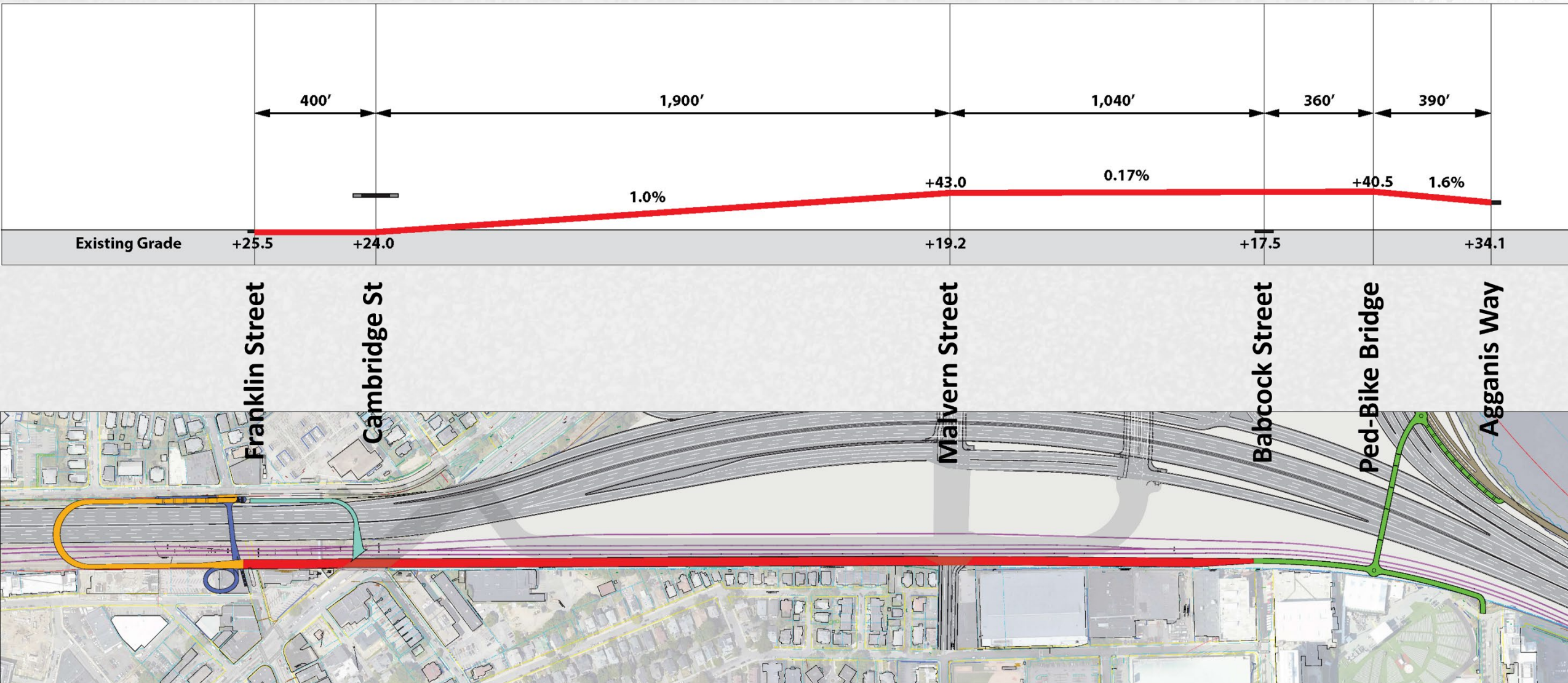
South Side Buffer Path Revised with New Track Alignment



South Side Buffer Path Revised with New Track Alignment

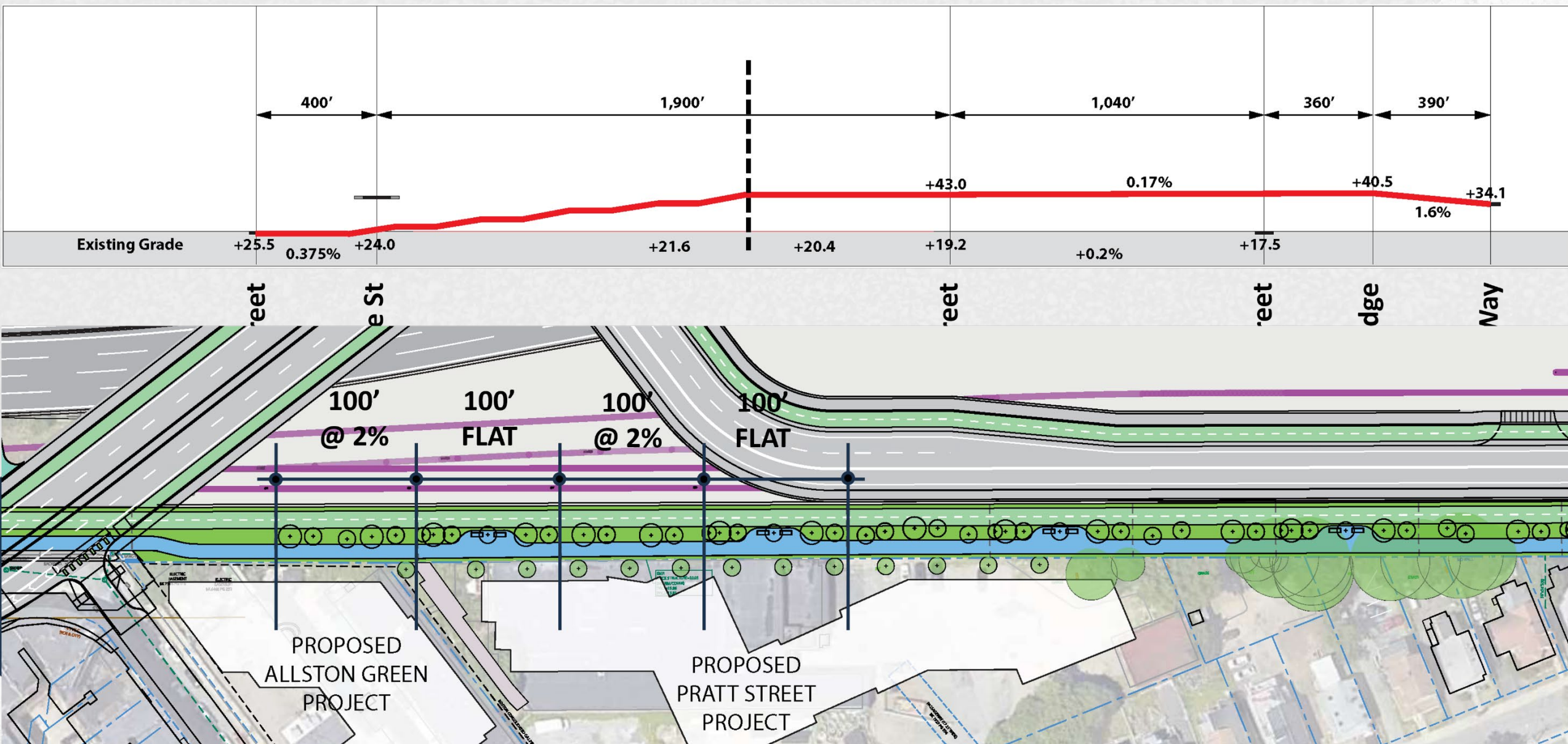


South Side Buffer Path Revised with New Track Alignment

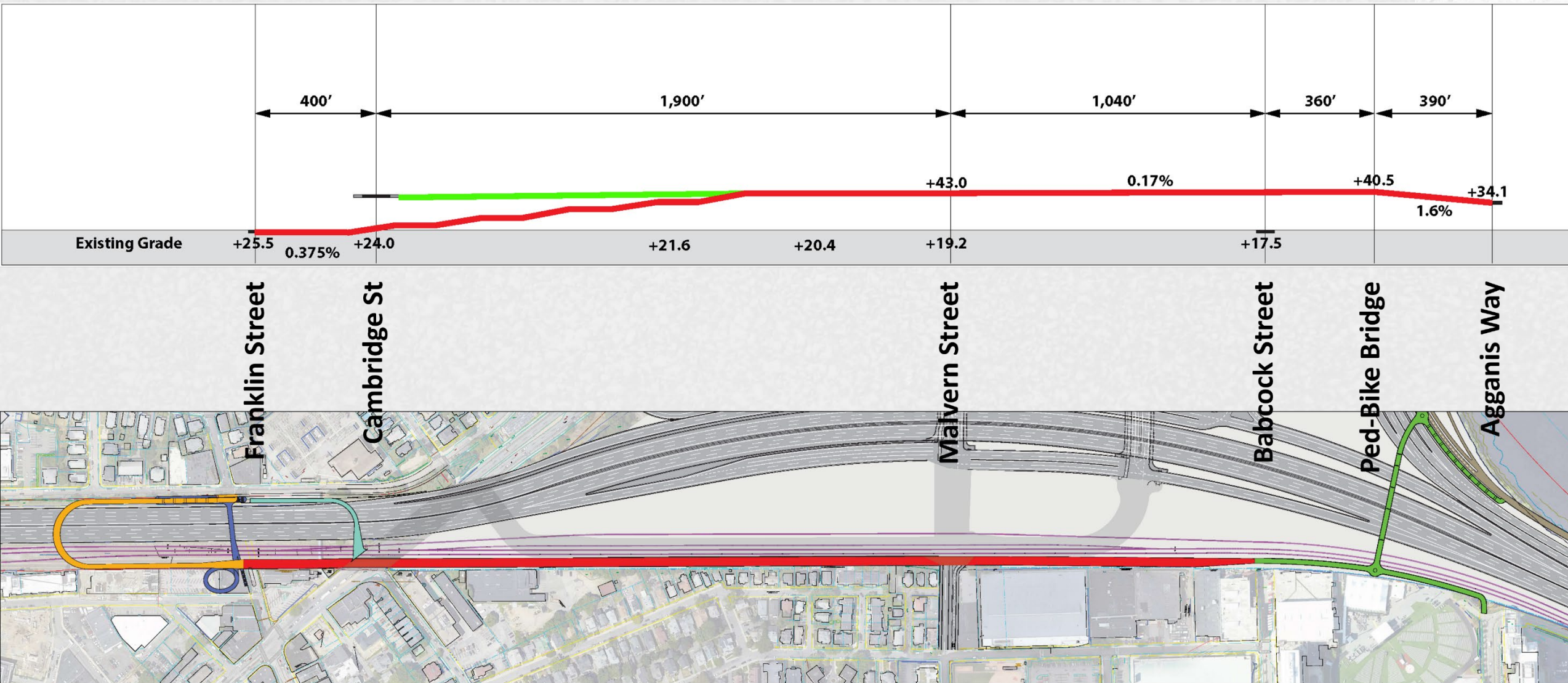


South Side Buffer Path - Stepped Up

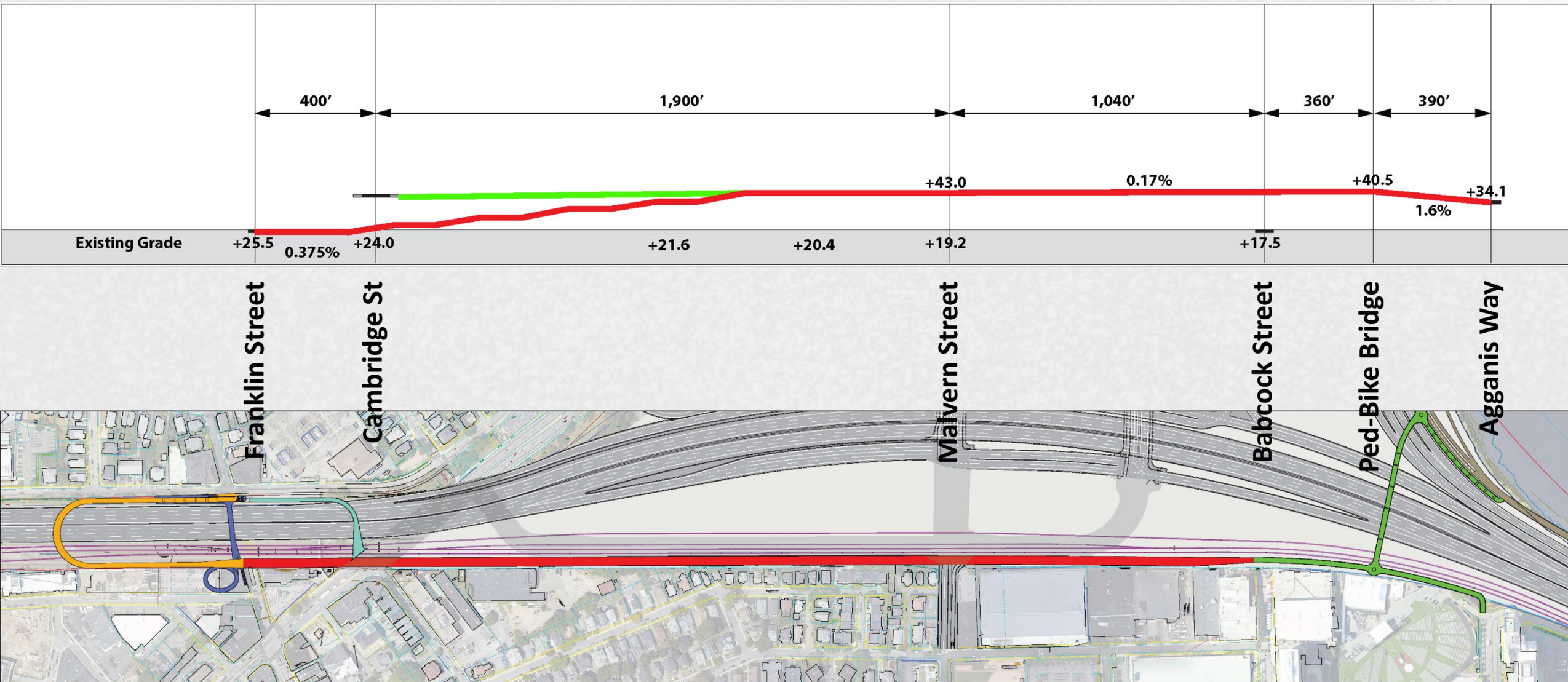
DRAFT - PRELIMINARY ANALYSIS



South Side Buffer Path Connection to Cambridge Street - At-Grade



South Side Buffer Path Connection to Cambridge Street - Elevated



Proposed Residential Development

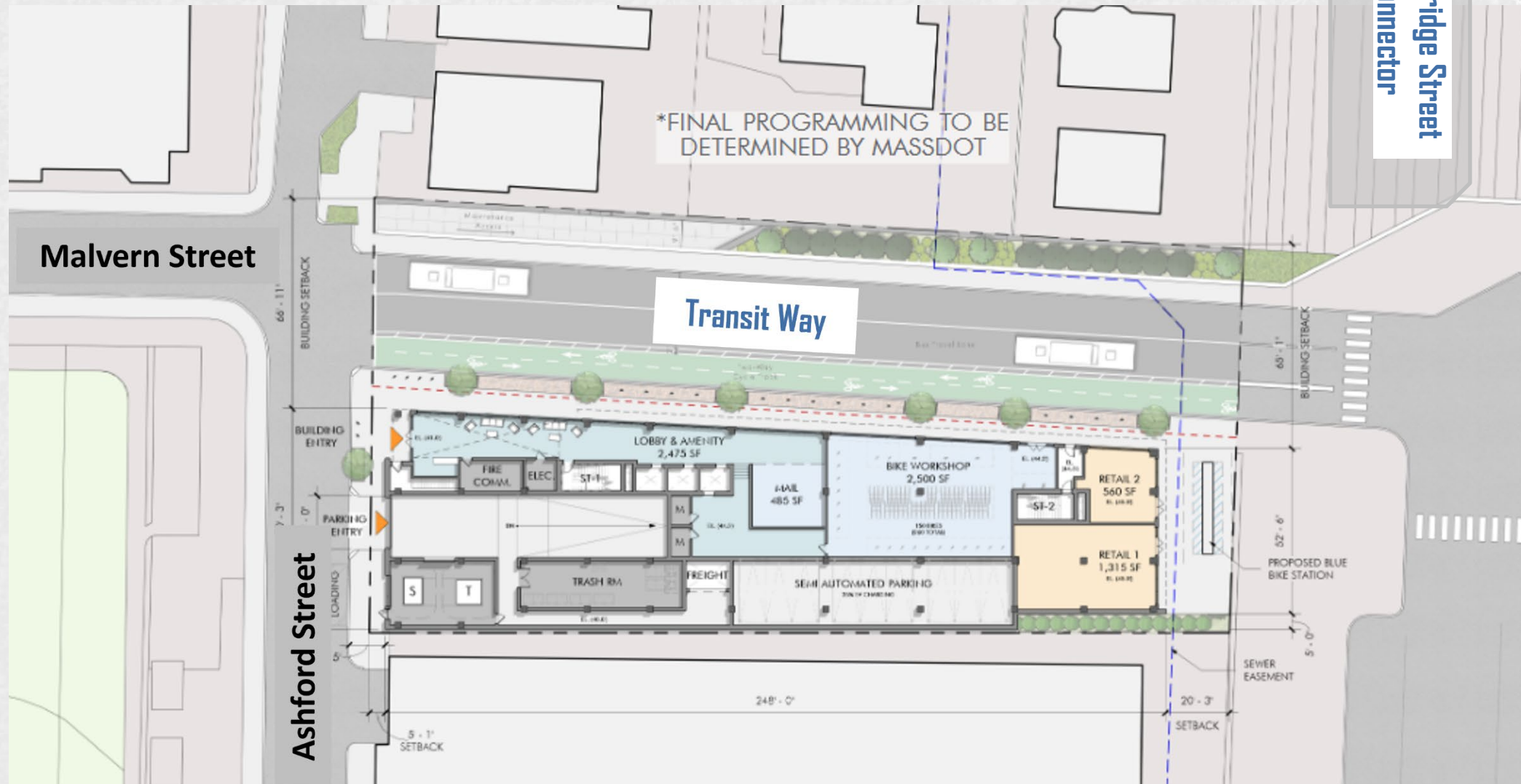
DRAFT - PRELIMINARY ANALYSIS



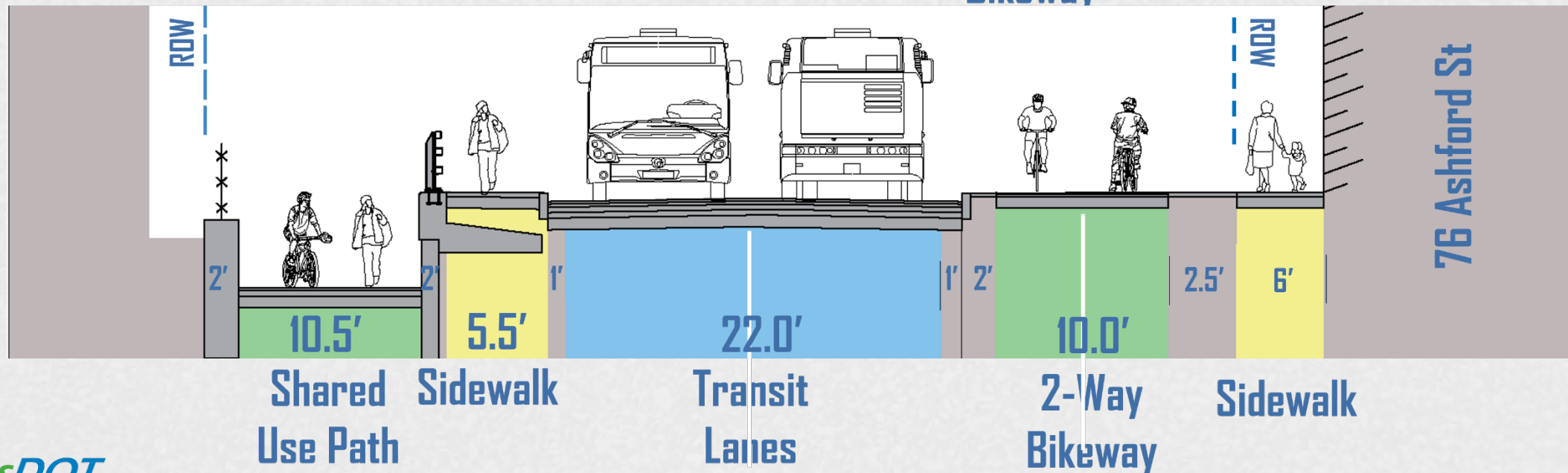
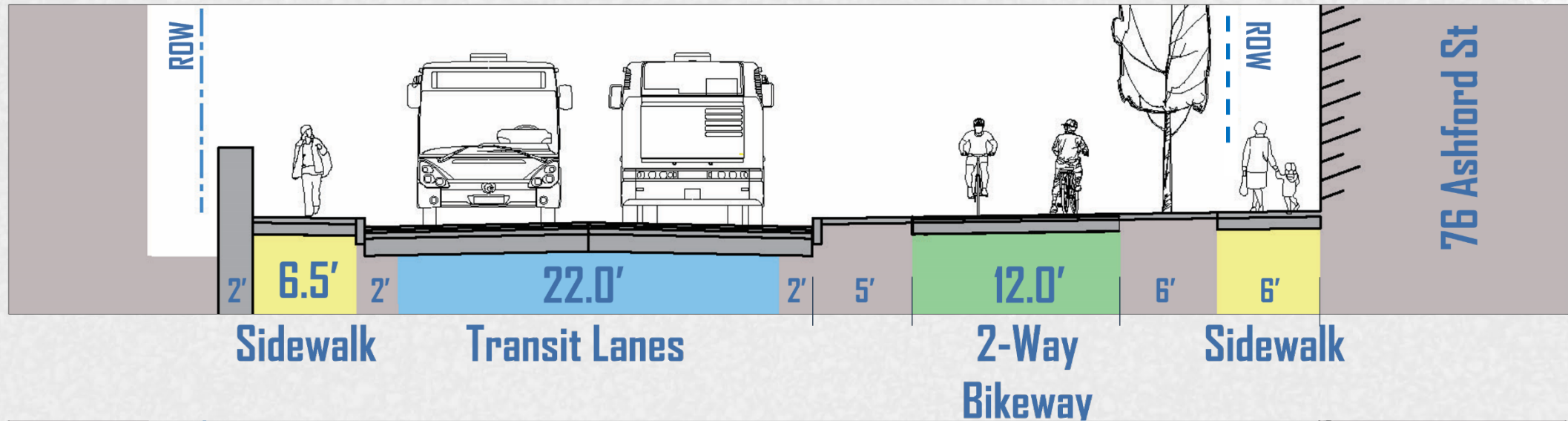
76 Ashford Street Development

Cambridge Street
Connector

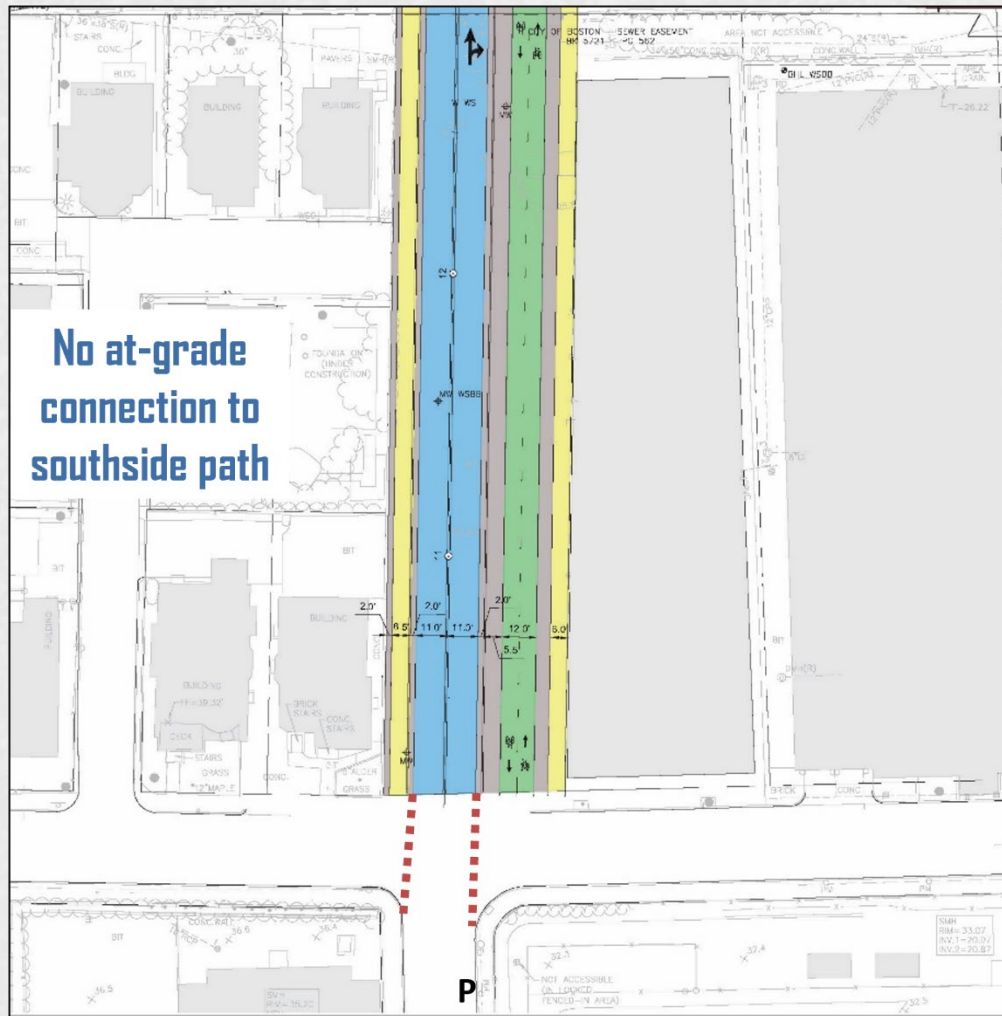
West Station



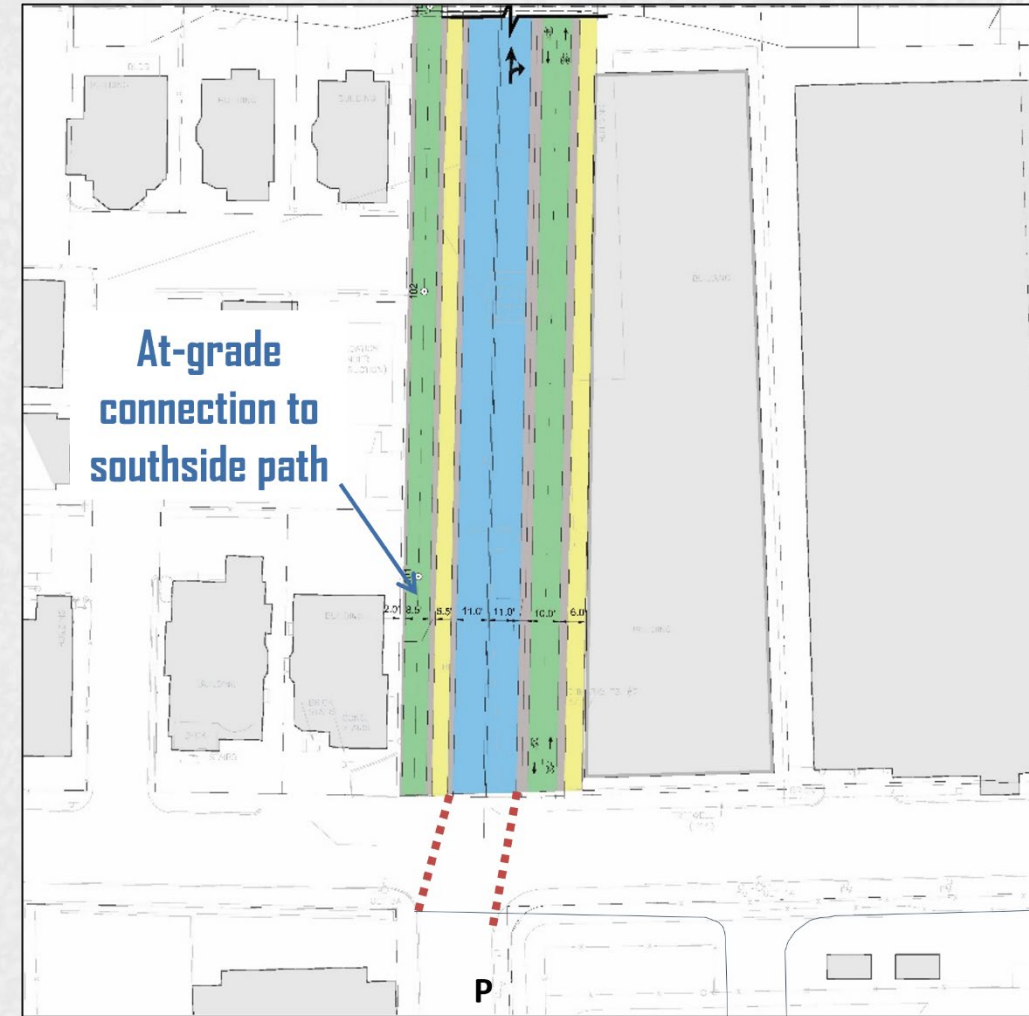
Malvern Street Transitway Cross Sections - Comparison of Options



Malvern Street Transitway Options – Lane Offset



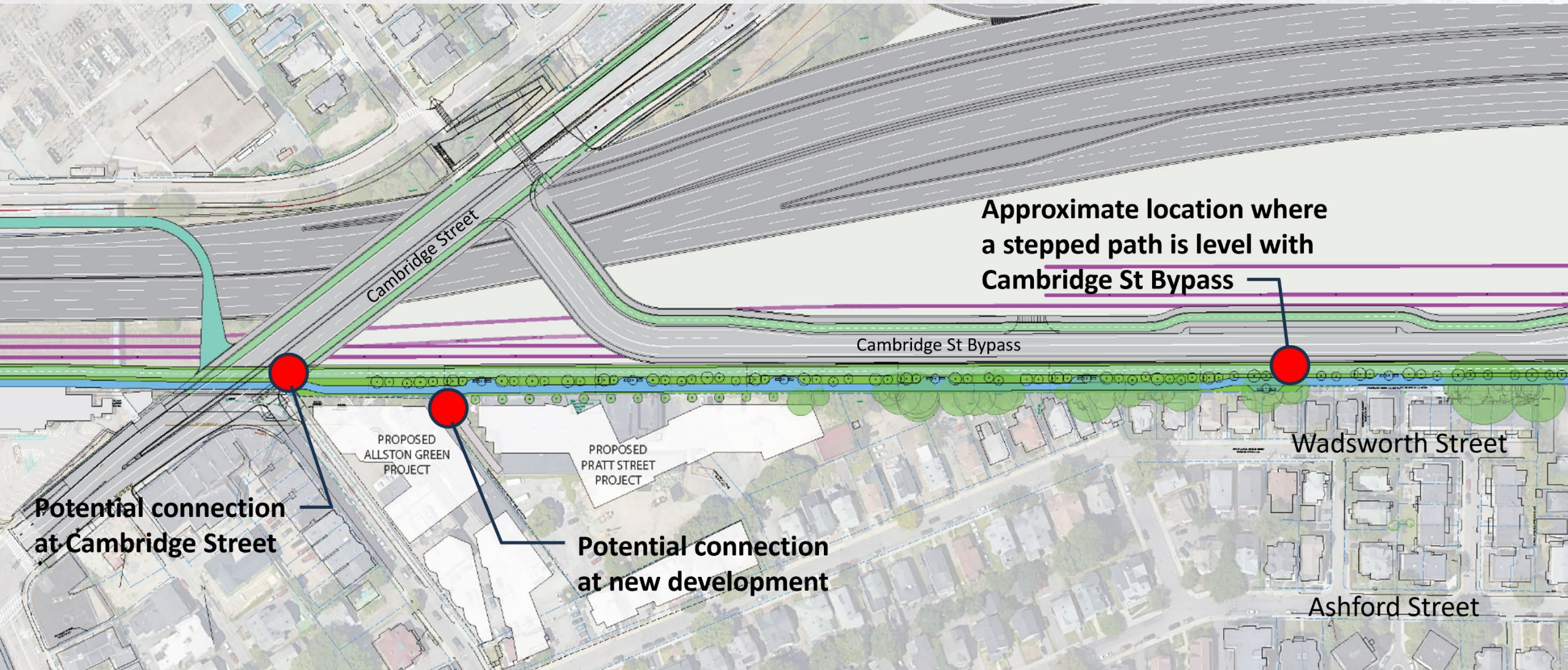
Eastside Two-way Bikeway



Two-way Bikeway w/Connection to At-Grade Southside Path

South Side Buffer Path

DRAFT - PRELIMINARY ANALYSIS



Approximate location where
a stepped path is level with
Cambridge St Bypass

Potential connection
at Cambridge Street

Potential connection
at new development

PROPOSED
ALLSTON GREEN
PROJECT

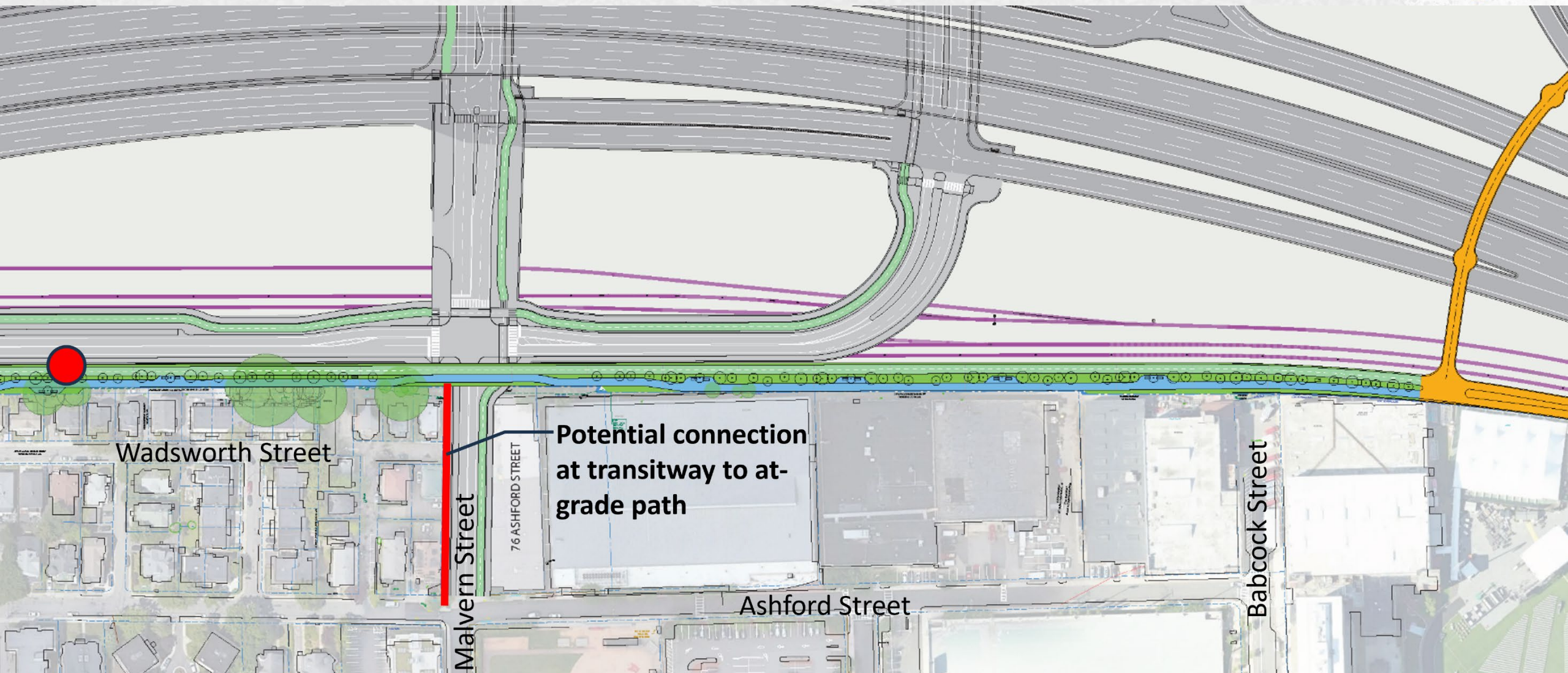
PROPOSED
PRATT STREET
PROJECT

Wadsworth Street

Ashford Street

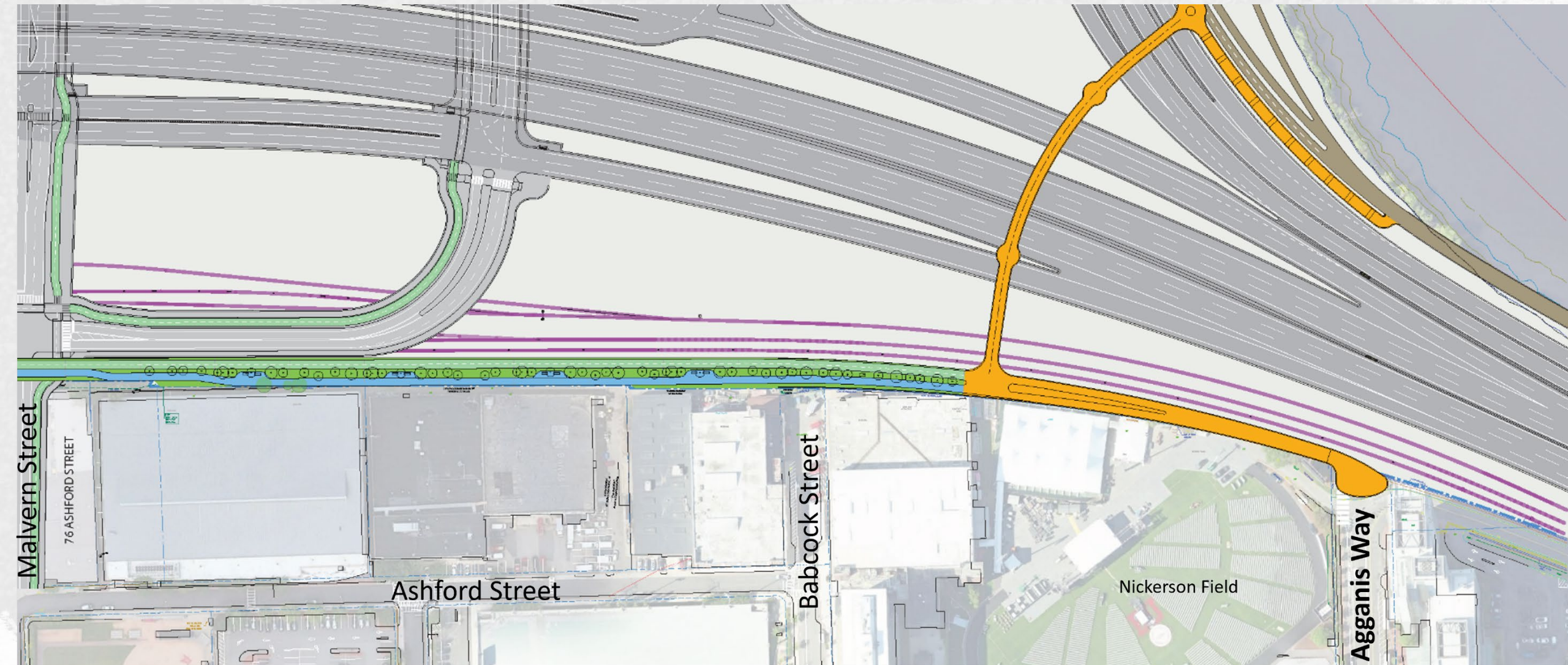
South Side Buffer Path

DRAFT - PRELIMINARY ANALYSIS



South Side Buffer Path

DRAFT - PRELIMINARY ANALYSIS





Points for Discussion

- Path at or under Malvern Street
- Connections from Cambridge Street
- Path relationship to Cambridge St Bypass Road