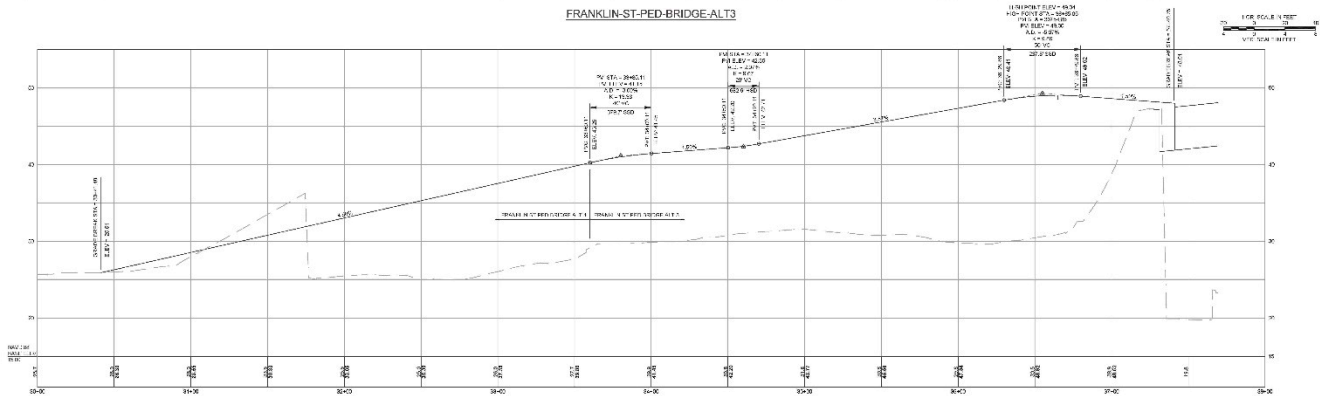


**NORTHERN CONNECTION TO CAMBRIDGE STREET  
BRIDGE AT WEST STATION WAY**

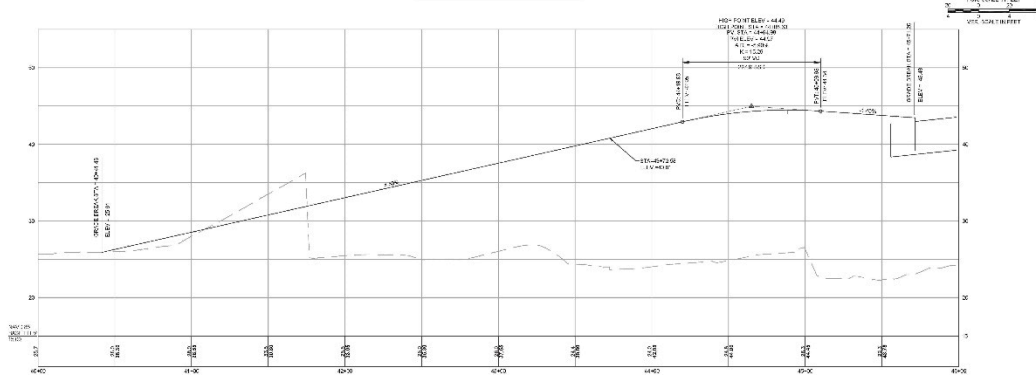
**DRAFT**  
**08/22/2024**

- Developed in response to comments from 8/9/2024 meeting
- Connects to Cambridge Street Bridge at proposed West Station Way
- Additional structure required
- Two connections to west side of Cambridge St Bridge 390 feet apart
- Adjacent Mansfield St switchback ramp serves similar purpose

- Developed in response to comments from 8/9/2024 meeting
- Connects to Cambridge Street Bridge at proposed West Station Way
- Additional structure required
- Two connections to west side of Cambridge St Bridge 390 feet apart
- Adjacent Mansfield St switchback ramp serves similar purpose



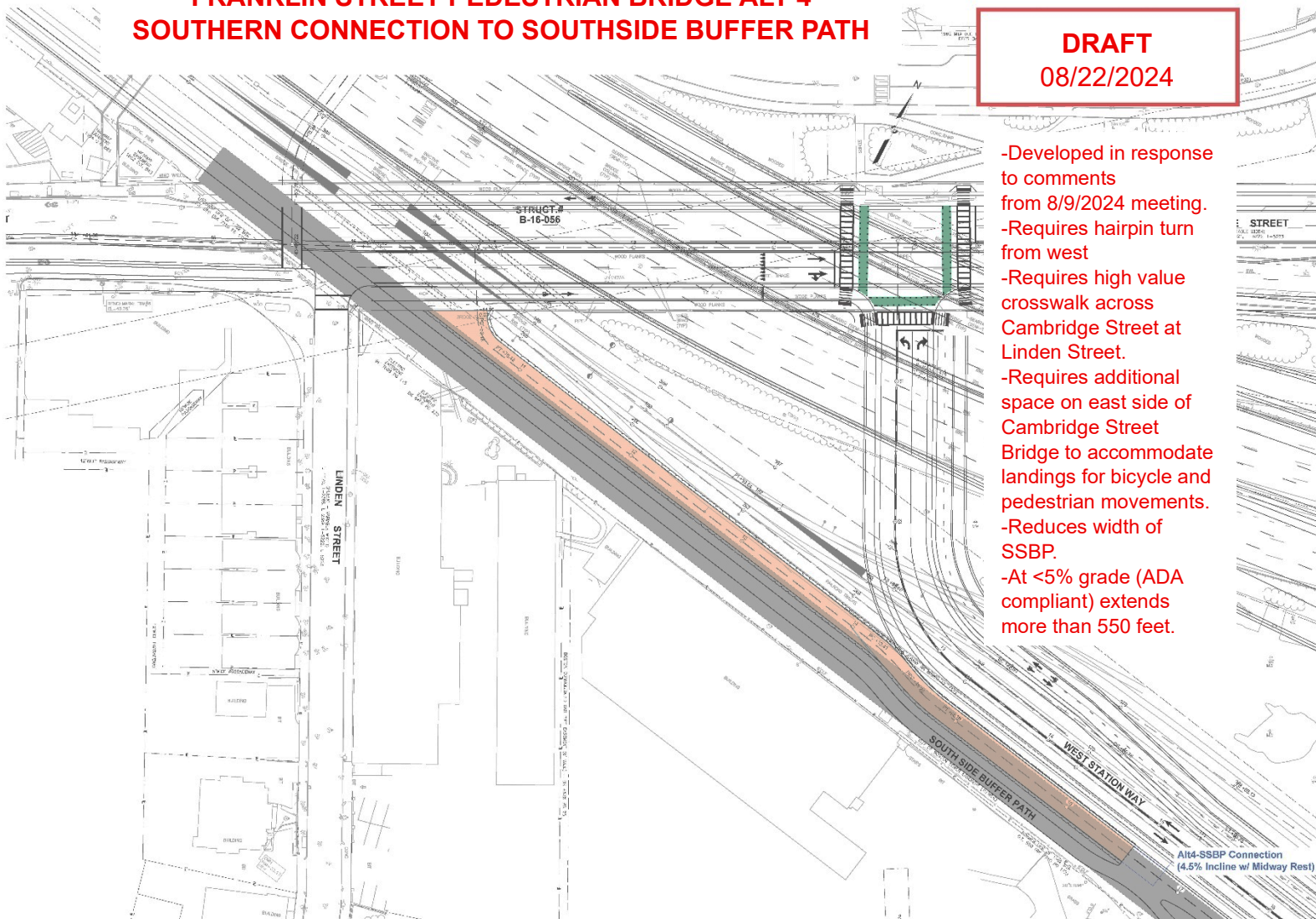
FRANKLIN-ST-PED-BRIDGE-ALT4



# FRANKLIN STREET PEDESTRIAN BRIDGE ALT 4 SOUTHERN CONNECTION TO SOUTHSIDE BUFFER PATH

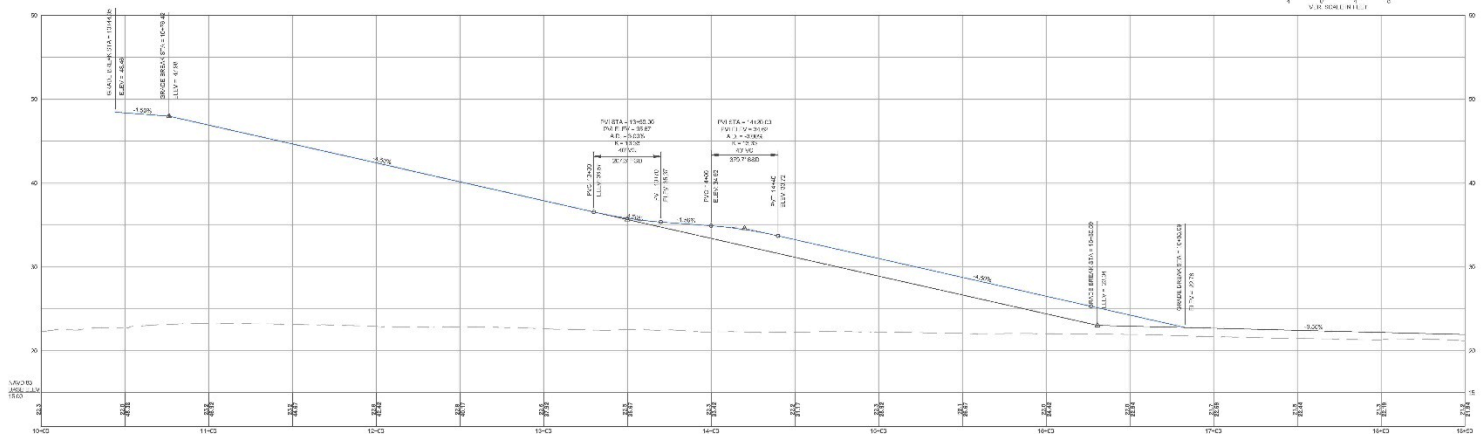
**DRAFT**  
08/22/2024

- Developed in response to comments from 8/9/2024 meeting.
- Requires hairpin turn from west
- Requires high value crosswalk across Cambridge Street at Linden Street.
- Requires additional space on east side of Cambridge Street Bridge to accommodate landings for bicycle and pedestrian movements.
- Reduces width of SSBP.
- At <5% grade (ADA compliant) extends more than 550 feet.



CAMBRIDGE ST S RAMP

NOT SCALE  
V.P. 300' HORIZ.





# FRANKLIN STREET PEDESTRIAN BRIDGE ALT 4 SOUTHERN CONNECTION TO FRANKLIN STREET

**DRAFT**

**08/22/2024**

- Developed in response to comments from 8/9/2024 meeting.
- Requires hairpin turn
- Reduces width of SSBP at entrance.
- At <5% grade (ADA compliant) extends beyond Franklin Street.
- Would obscure views from Depot

