

DRAFT – FOR DISCUSSION PURPOSES ONLY



ALLSTON MULTIMODAL PROJECT
Multimodal Connections Overview
Working Group Meeting

August 9, 2024

Project Purpose

- Address deteriorating I-90 viaduct and substandard highway layout & geometry
- Alleviate existing infrastructure safety concerns
- Improve mobility of people and goods across all travel modes
- Reconnect Allston community to Charles River with expanded access



Project Need

DRAFT – FOR DISCUSSION PURPOSES ONLY



Deteriorating Viaduct



Substandard Highway Geometry & Interchange Layout



Constrained Commuter Rail Operations



Safety & Operational Deficiencies



Insufficient & Inaccessible Riverfront Green Space



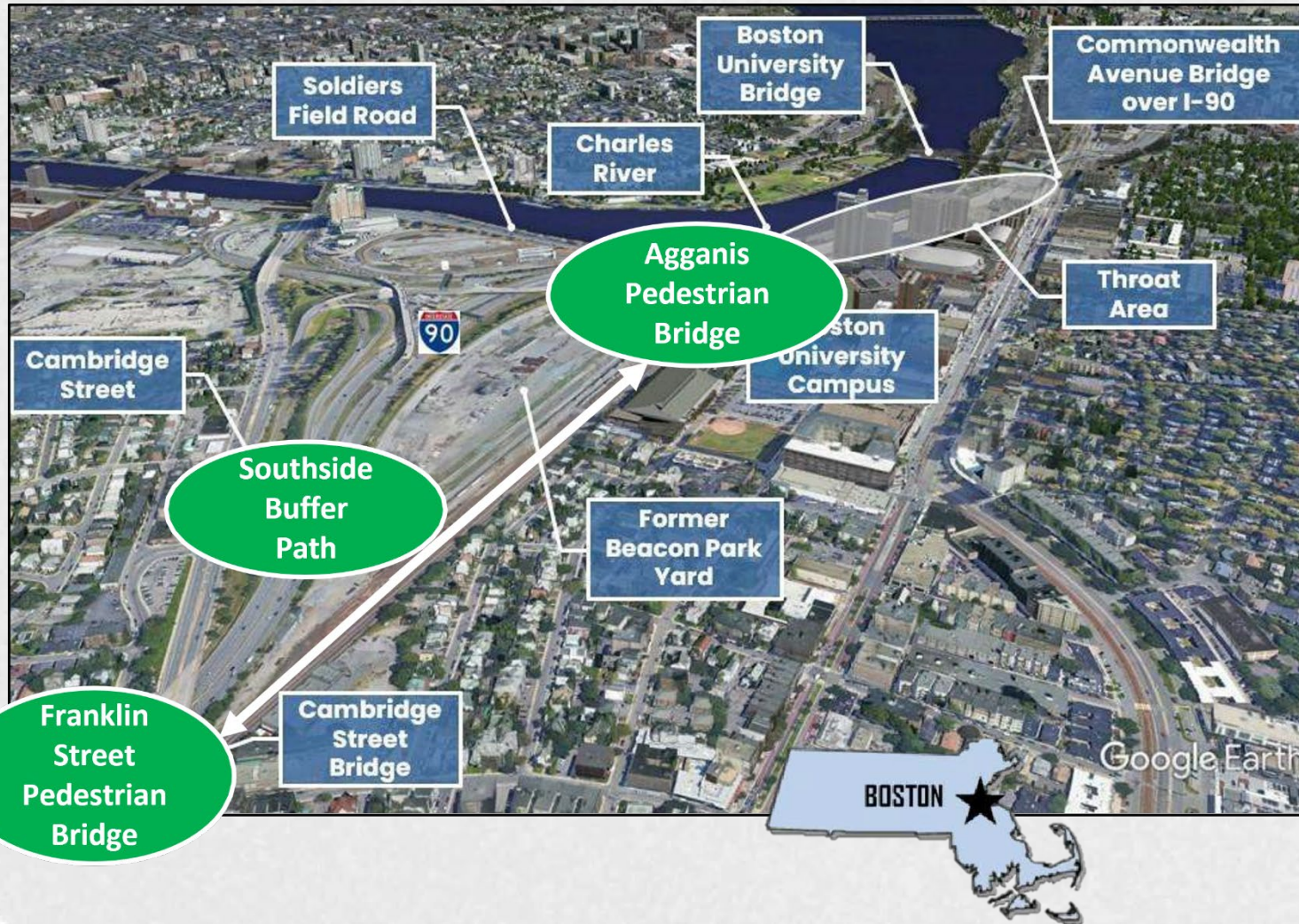
Inadequate Bicycle & Pedestrian Infrastructure

Project Goals

The I-90 Allston interchange is crucial to the Commonwealth's roadway network. This project will ensure the efficient operation of the interchange and result in the following benefits:

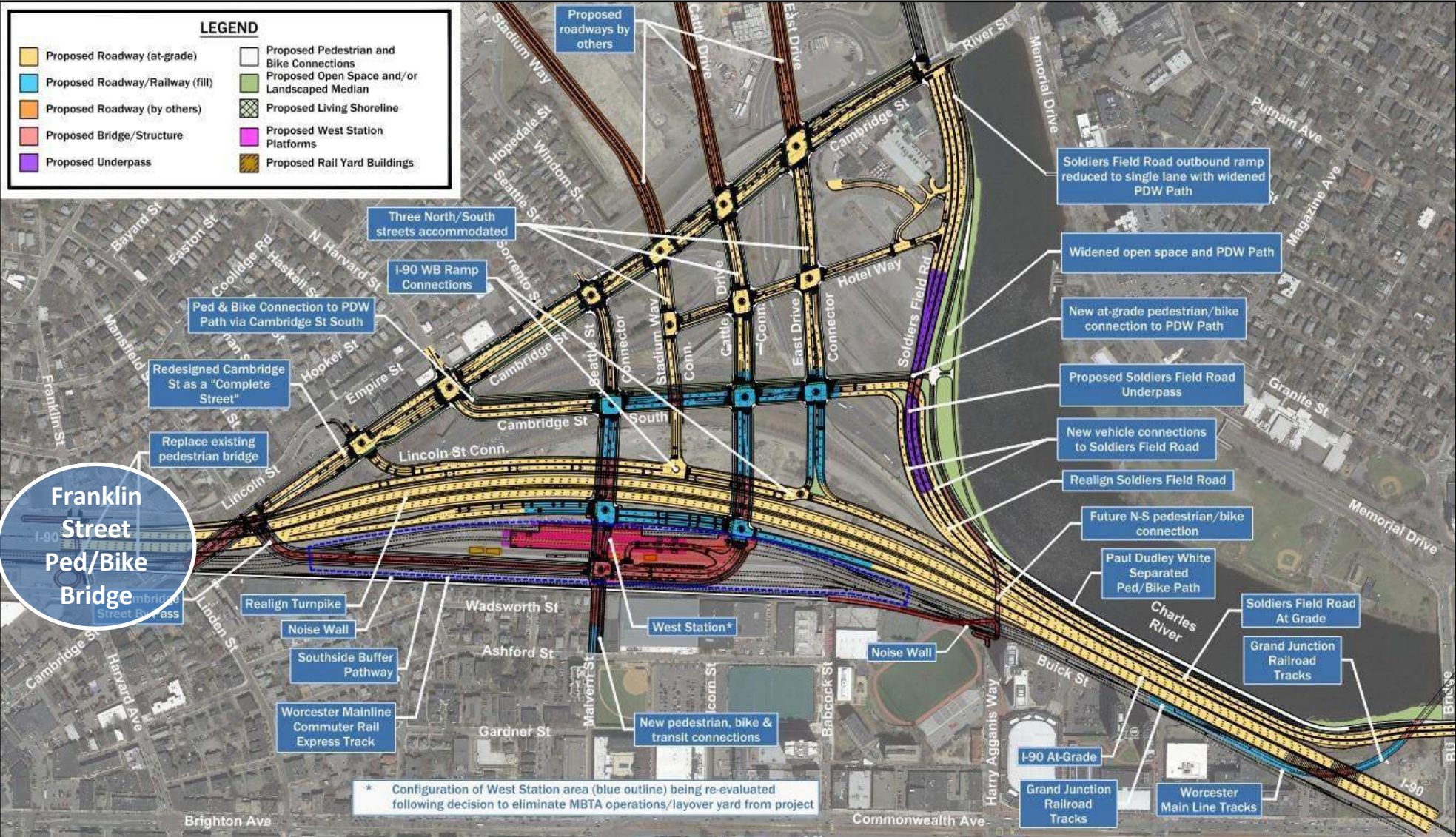
- Improved livability, connectivity, and open space for residents of Allston
- Increased regional mobility and roadway safety
- New open space along the Charles River, and expanded public access
- New multimodal street network and upgrades to Cambridge Street
- New and augmented bicycle and pedestrian connections
- Transit enhancements (new West Station)
- Improved neighborhood views due to removal of the elevated viaduct

Project Location



- Cambridge Street bridge & Franklin Street pedestrian bridge over I-90 to the west
- Cambridge Street to the northwest
- Charles River to the northeast
- Commonwealth Avenue Bridge over I-90 to the east
- Boston University & Ashford Street to the south

Project Scope – Overview

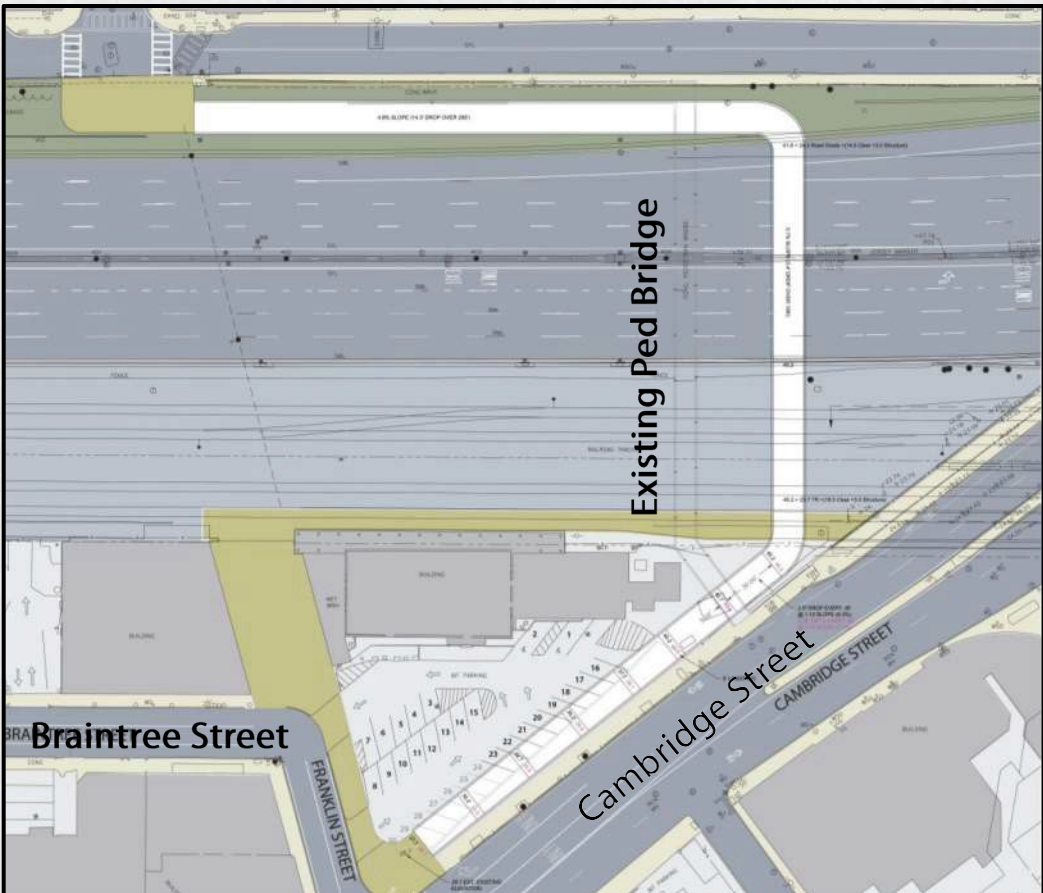


Existing Conditions – Franklin Street Pedestrian Bridge

- Deteriorated and substandard pedestrian bridge located approximately 250 feet west of the Cambridge Street Bridge over I-90 will be replaced with a new, widened pedestrian bridge that meets Americans with Disabilities Act and Architectural Access Board (ADA/AAB) accessibility standards



Proposed Conditions – Franklin Street Pedestrian Bridge

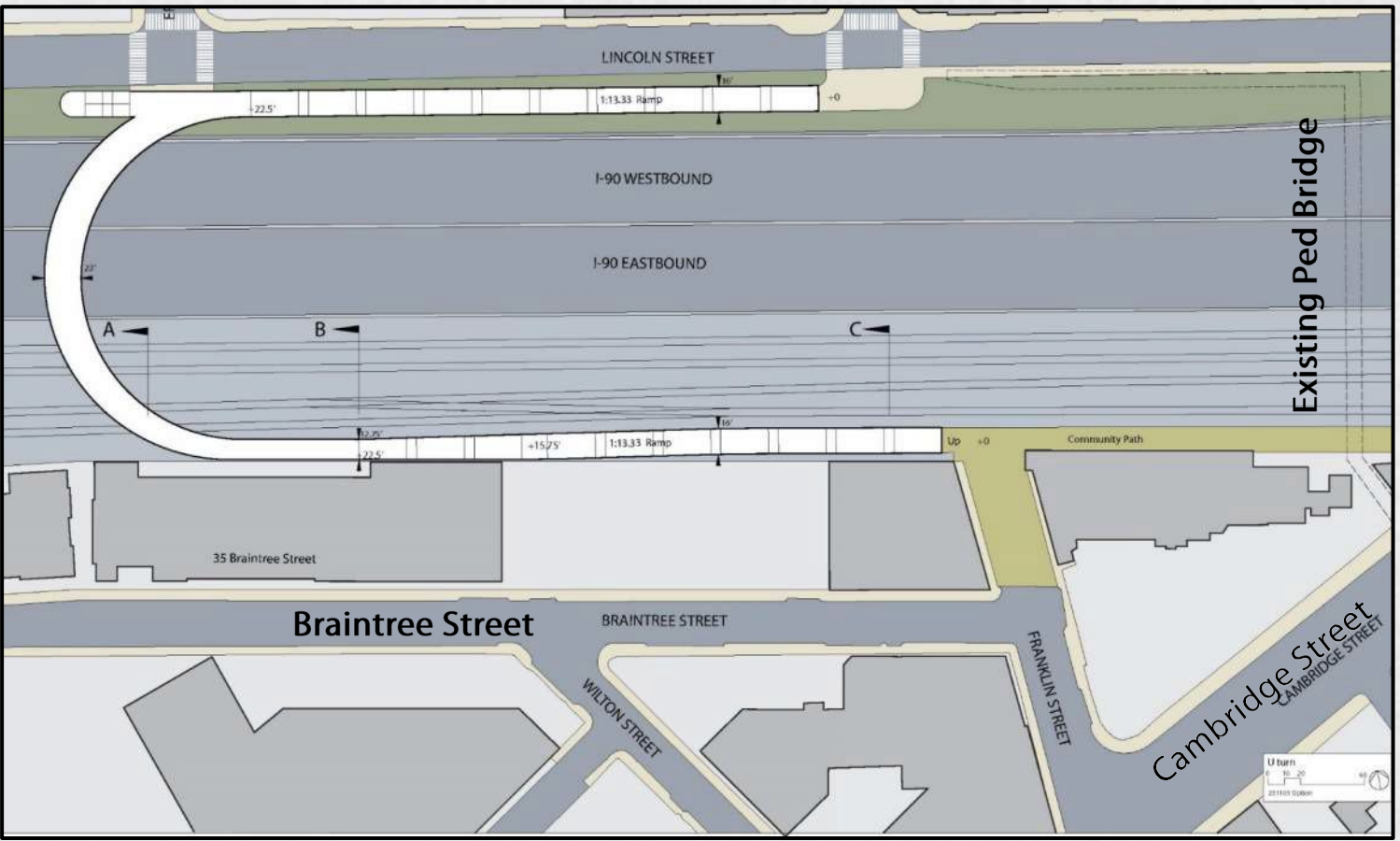


Option 1 – Access Ramp

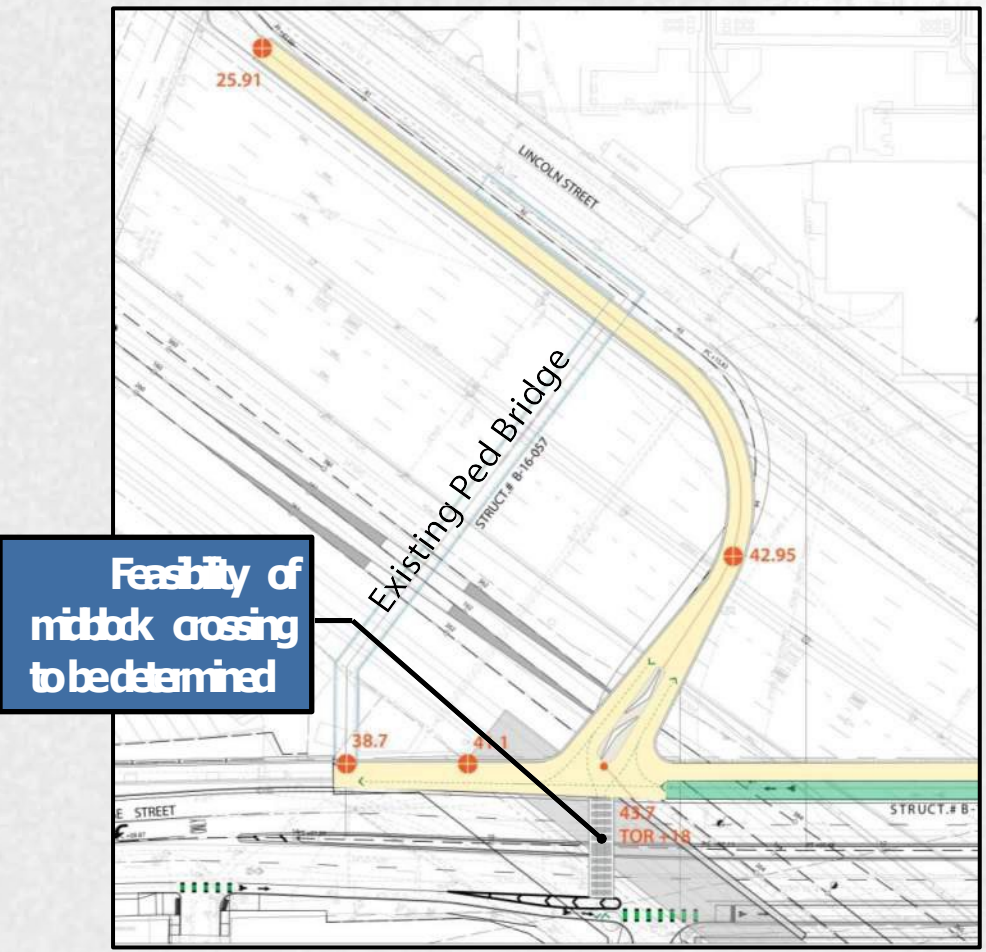


Option 2 – Spiral

Proposed Conditions – Franklin Street Pedestrian Bridge



Option 3 – U-Turn



Option 4 – Cambridge St. Connection

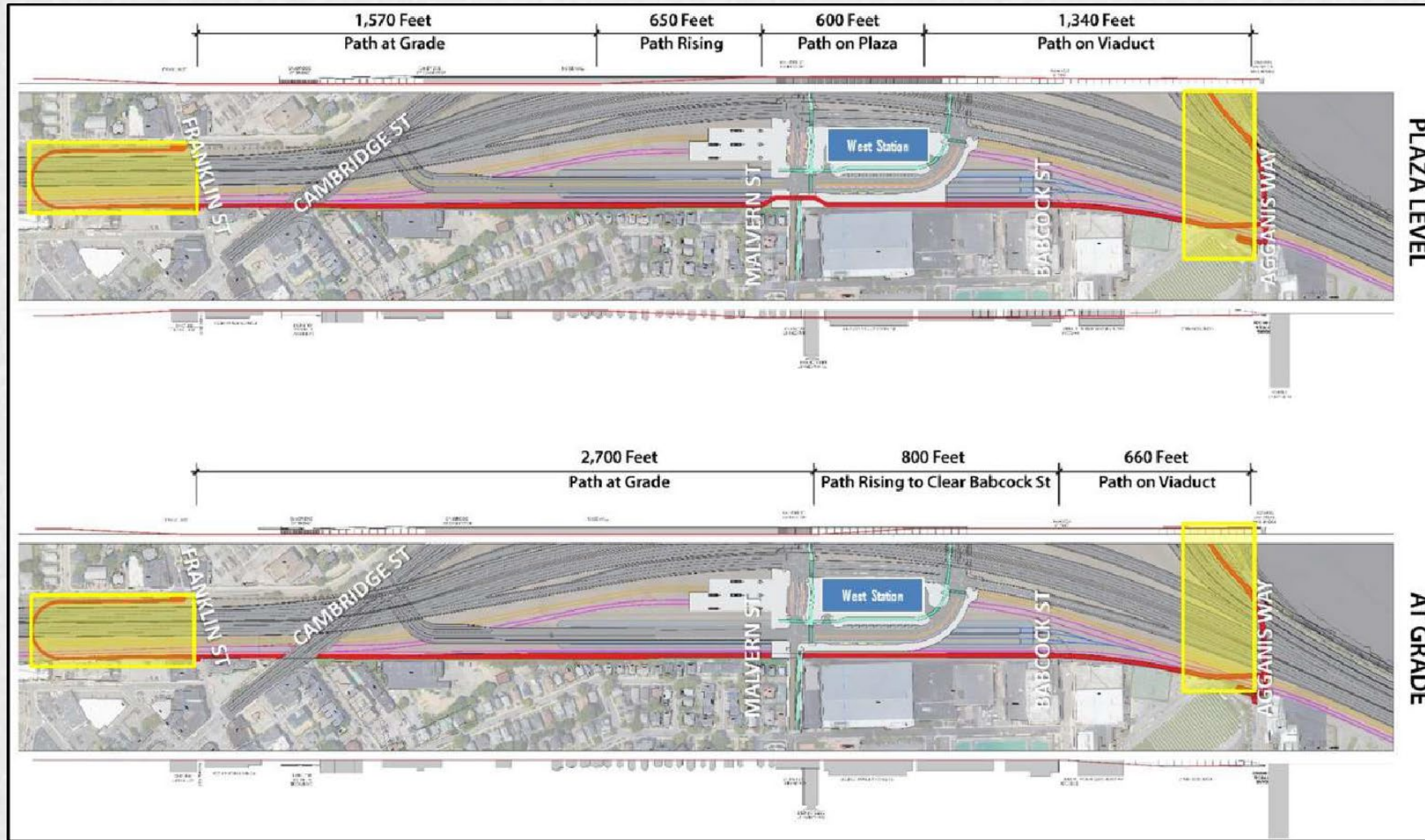


WORKING GROUP MEETING - 8/9/24

Existing Conditions – Southside Buffer Path Corridor

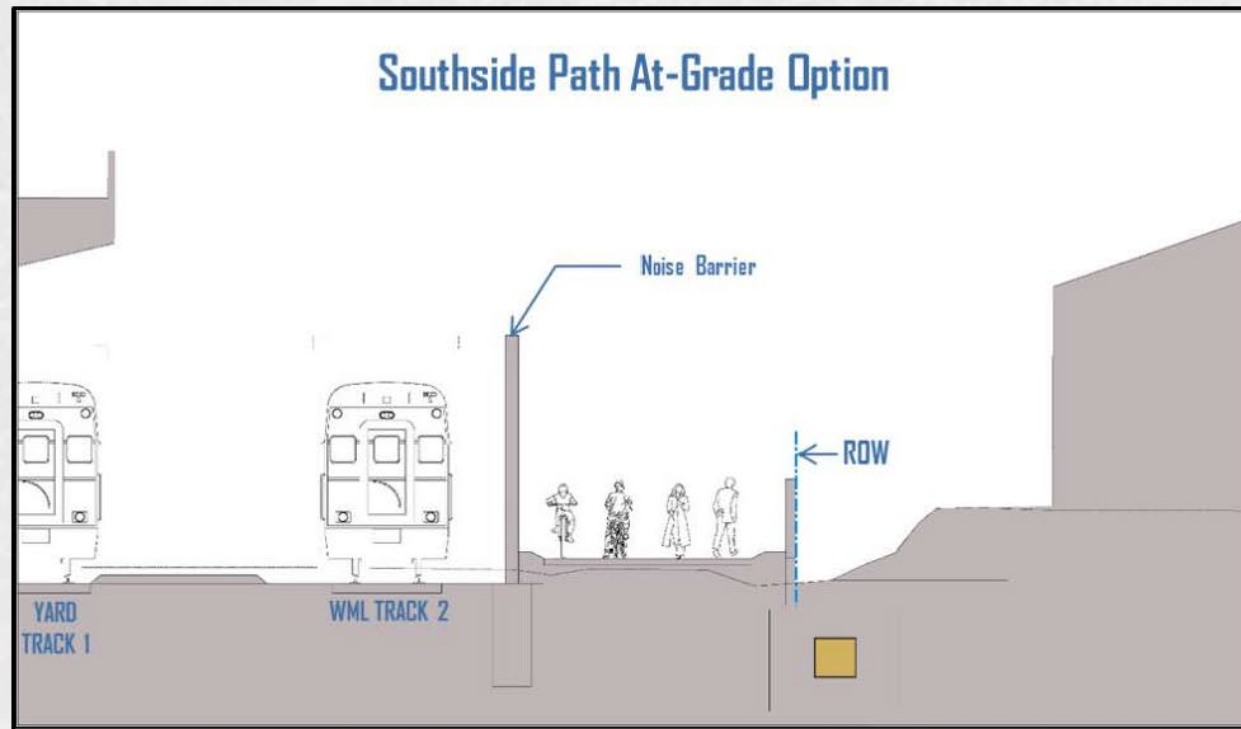


Proposed Conditions – Southside Buffer Path Corridor

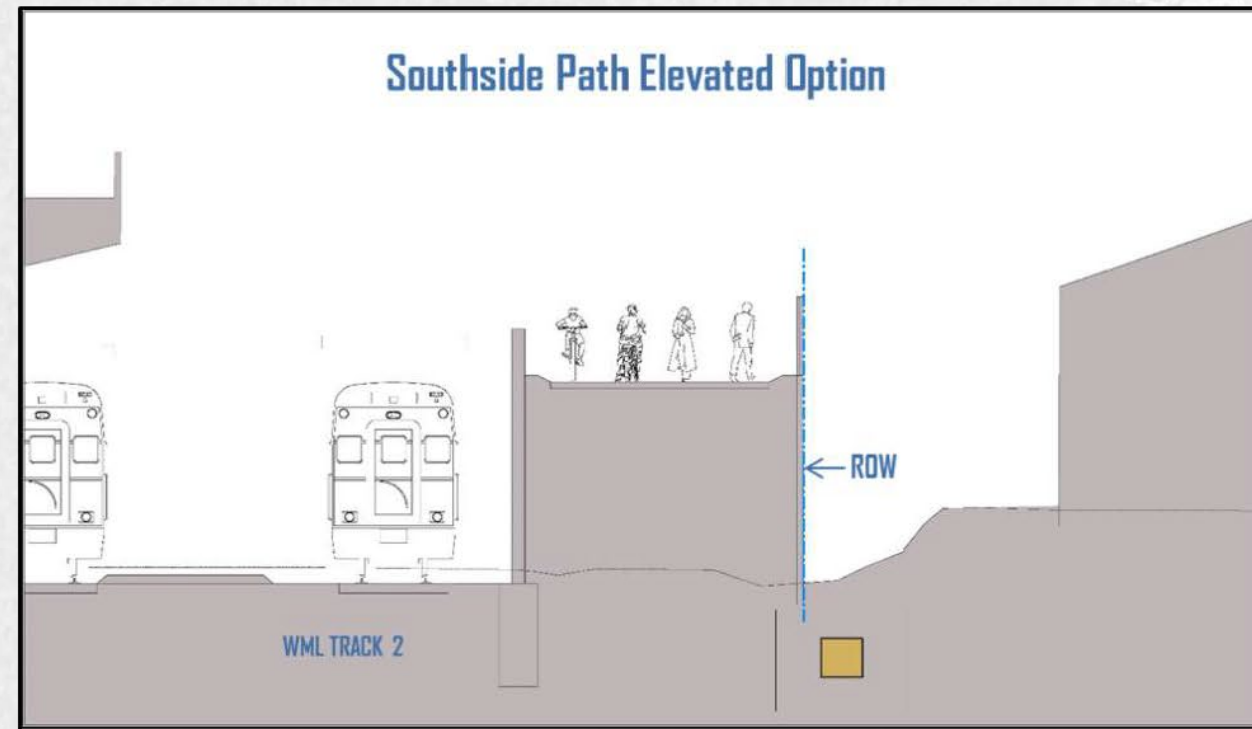


Proposed Conditions – Southside Buffer Path Corridor

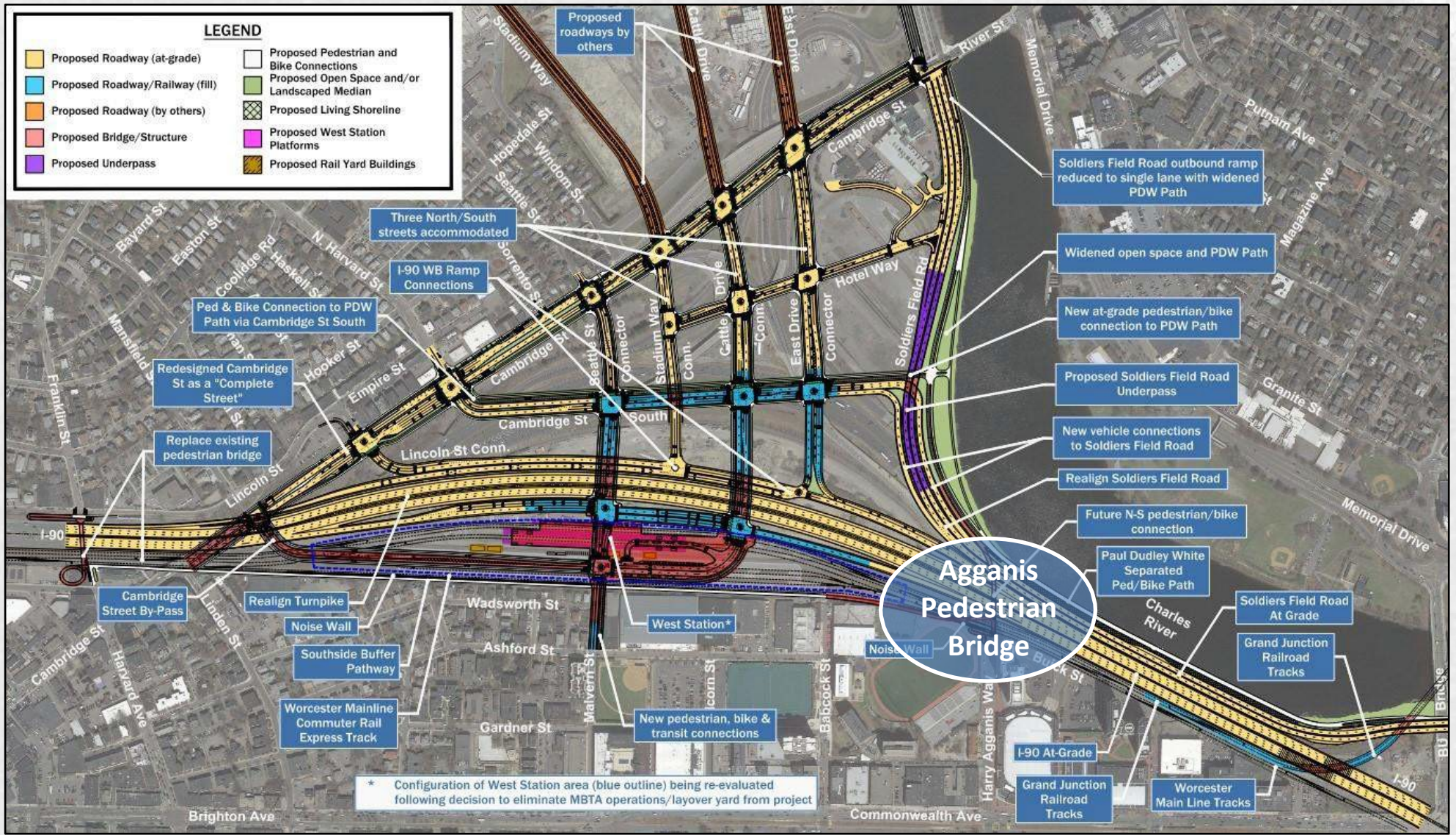
Southside Path At-Grade Option



Southside Path Elevated Option



Project Scope – Overview



Existing Conditions – Agganis Pedestrian Bridge



Proposed Conditions – Agganis Pedestrian Bridge

