

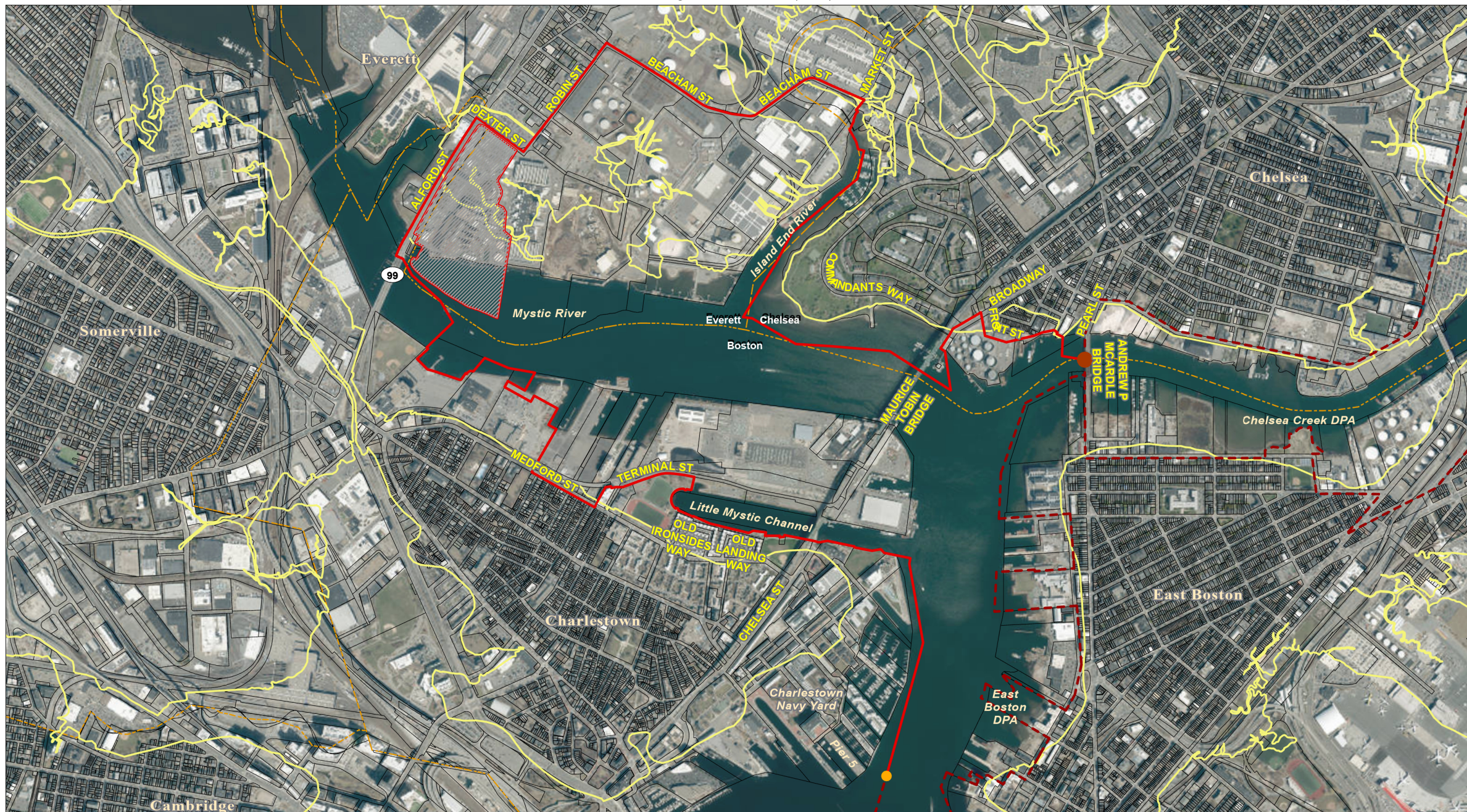


Massachusetts Office of Coastal Zone Management  
100 Cambridge Street, Suite 900  
Boston, MA 02114  
[www.mass.gov/czm](http://www.mass.gov/czm)

# Mystic River

Designated Port Area (DPA)

For planning purposes only. In the event of conflict between this map and the accompanying written description, CZM shall issue a written clarification pursuant to the Designated Port Area (DPA) regulations at 301 CMR 25.00.



- Point of Beginning
- Point of Ending
- Mystic River DPA Boundary\_old
- Adjacent DPA Boundary
- Chapter 91 Presumptive Line
- Municipal Boundary
- MA Property Tax Parcels
- Not in DPA



Base map: MassGIS 2023 Aerial Imagery.  
Map coordinate system: North American Datum of 1983,  
Massachusetts State Plane Coordinate System,  
Mainland Zone (FIPS zone 2001), meters.

0 1,000 2,000 3,000 4,000 Feet

June 2025