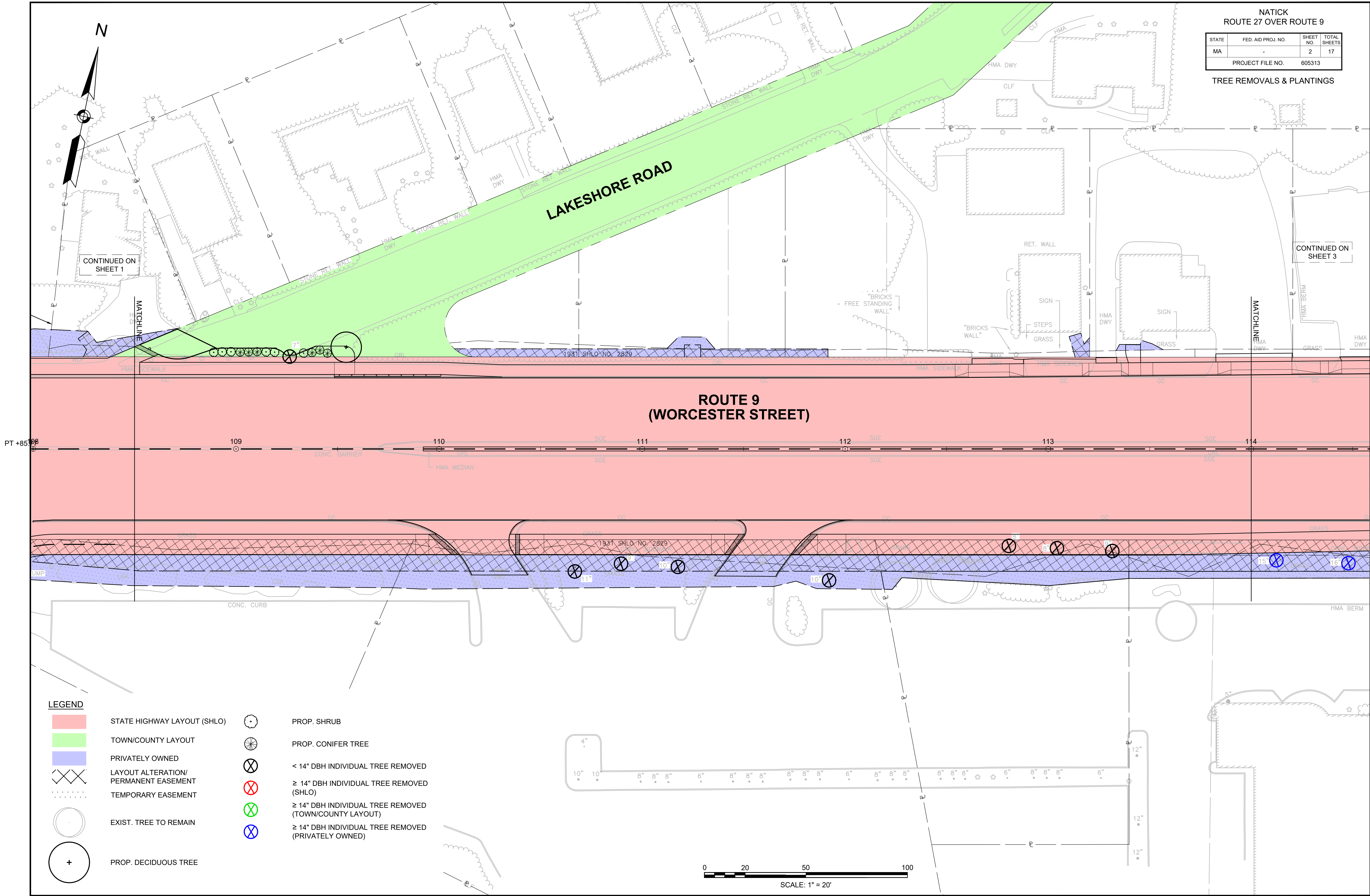


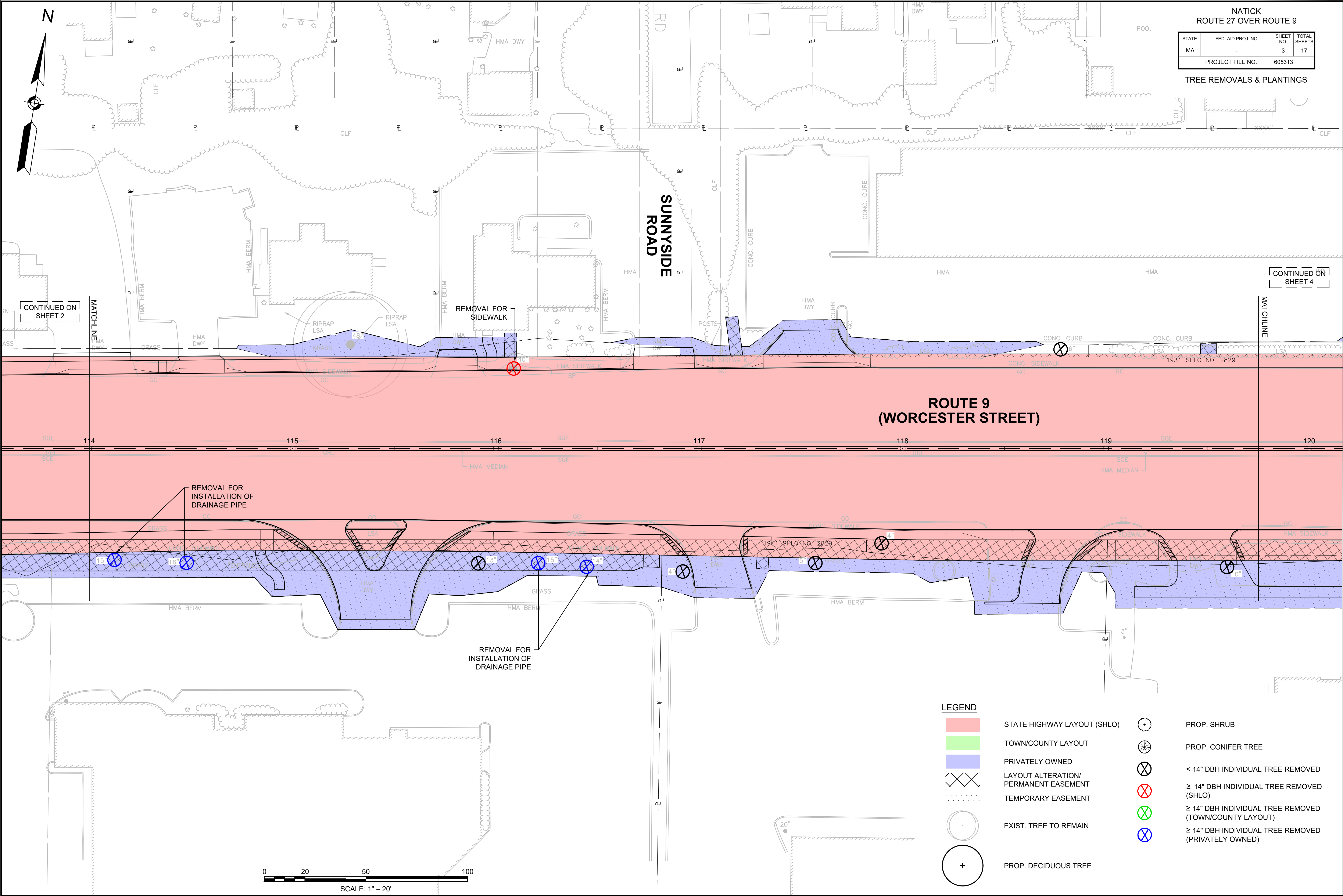
NATICK ROUTE 27 OVER ROUTE 9			
STATE	FED. AID PROJ. NO.	SHEET NO.	TOTAL SHEETS
MA	-	1	17
PROJECT FILE NO.		605313	
TREE REMOVALS & PLANTINGS			

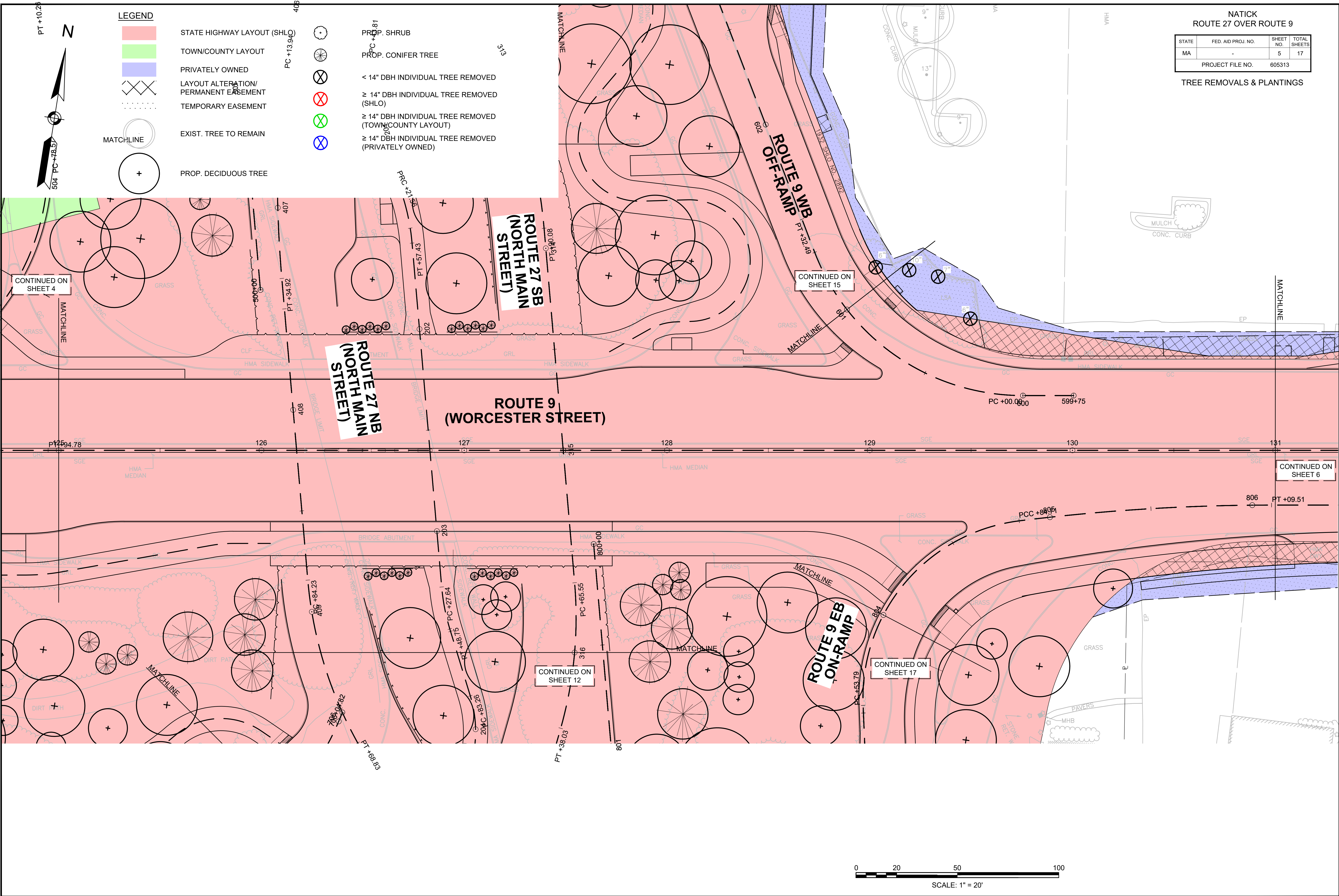
NATICK
ROUTE 27 OVER ROUTE 9

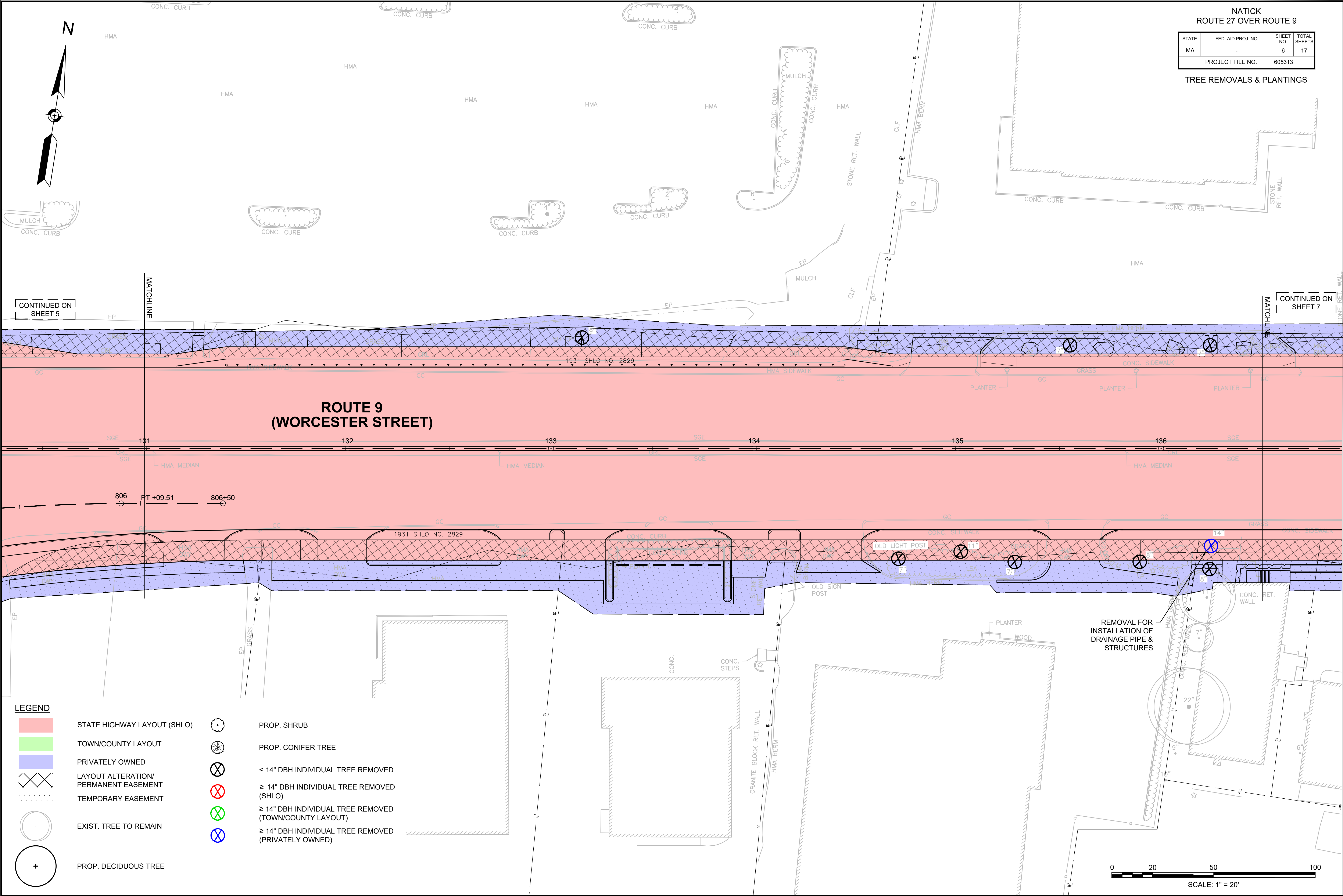
STATE	FED. AID PROJ. NO.	SHEET NO.	TOTAL SHEETS
MA	-	2	17
PROJECT FILE NO.		605313	

TREE REMOVALS & PLANTINGS

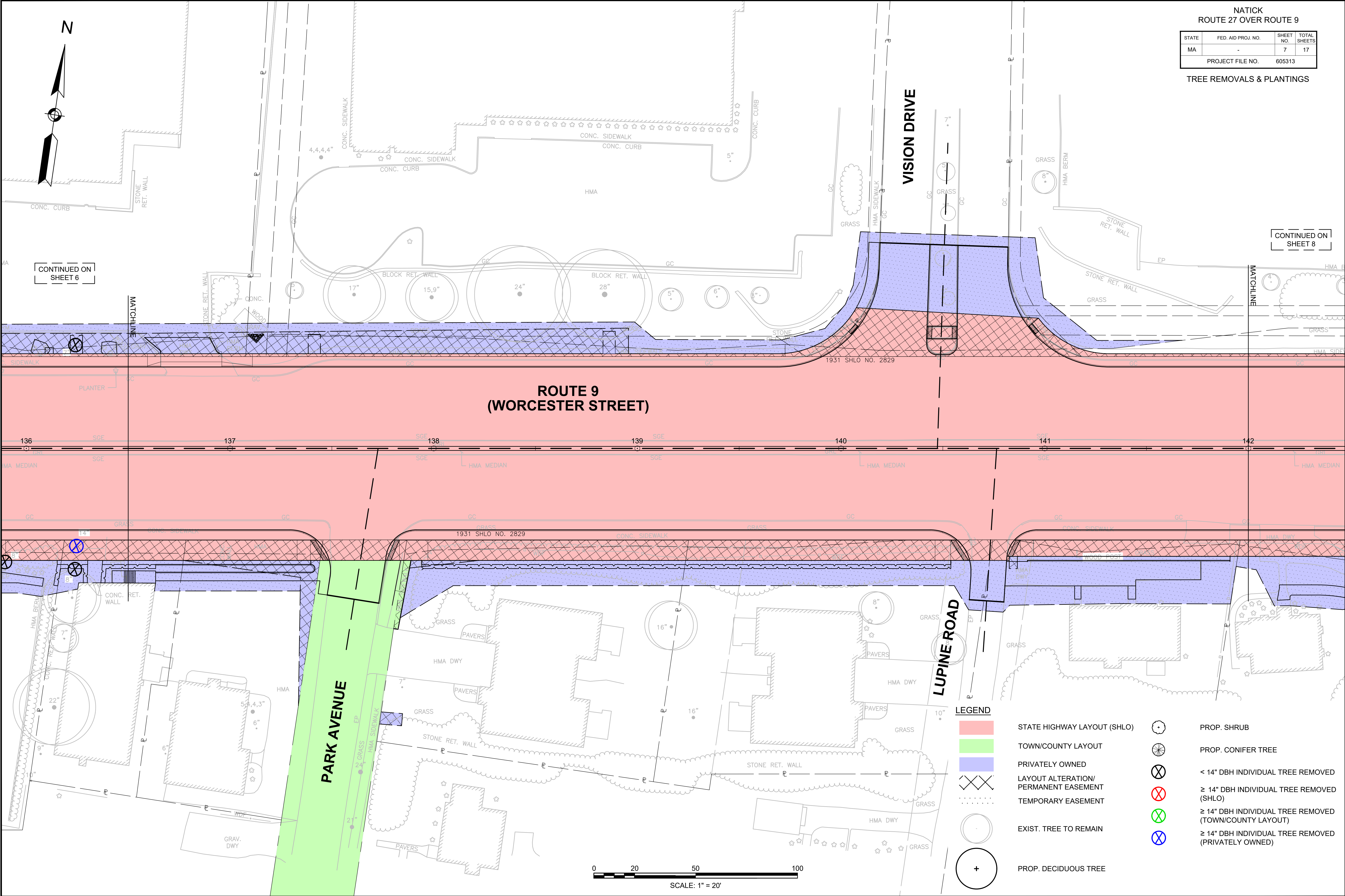




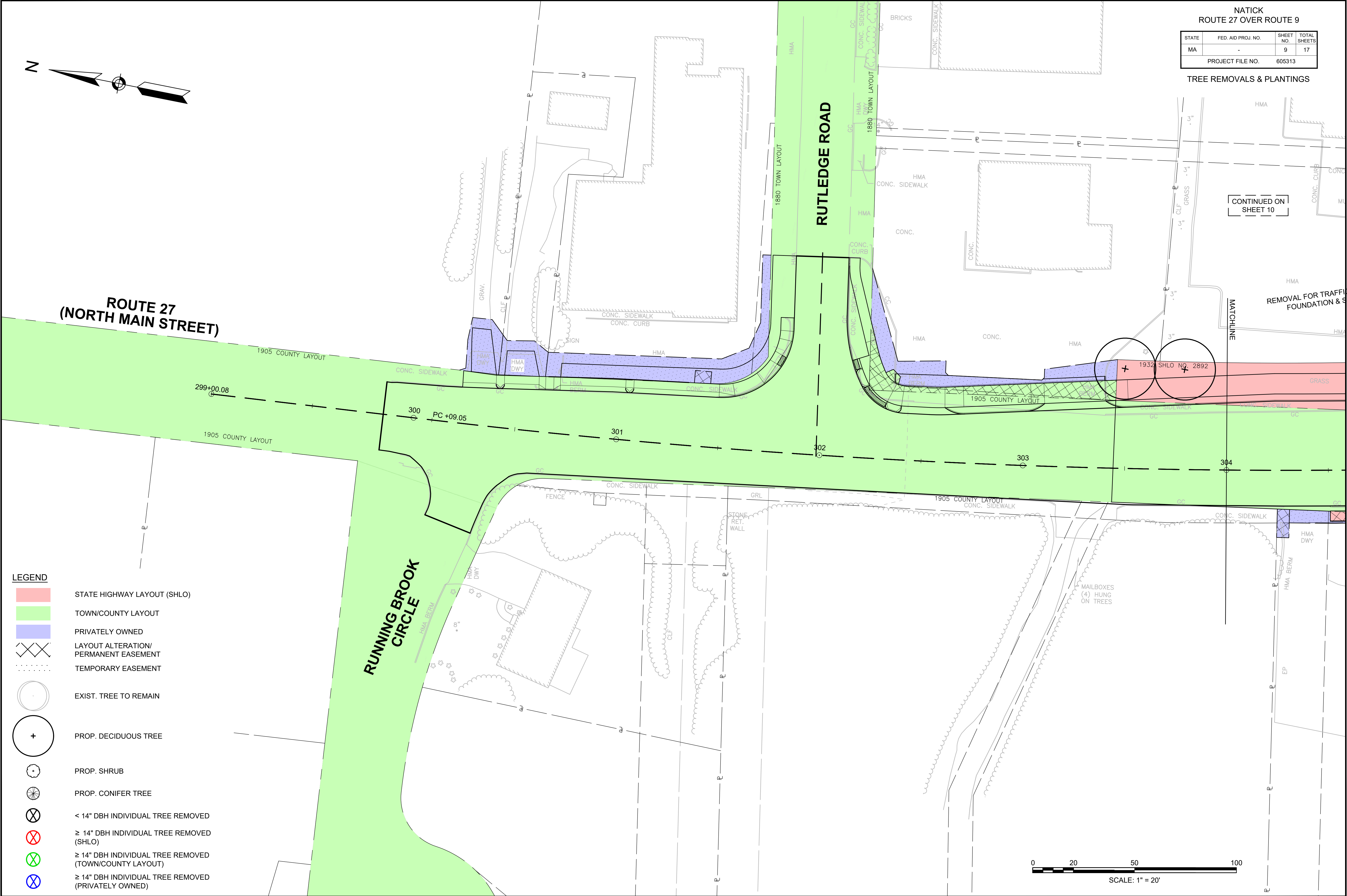




NATICK ROUTE 27 OVER ROUTE 9			
STATE	FED. AID PROJ. NO.	SHEET NO.	TOTAL SHEETS
MA	-	6	17
PROJECT FILE NO.		605313	
TREE REMOVALS & PLANTINGS			



NATICK ROUTE 27 OVER ROUTE 9			
STATE	FED. AID PROJ. NO.	SHEET NO.	TOTAL SHEETS
MA	-	7	17
PROJECT FILE NO.		605313	
TREE REMOVALS & PLANTINGS			



LEGEND

STATE HIGHWAY LAYOUT (SHLO)

TOWN/COUNTY LAYOUT

PRIVATELY OWNED

LAYOUT ALTERATION/
PERMANENT EASEMENT

TEMPORARY EASEMENT

EXIST. TREE TO REMAIN

PROP. DECIDUOUS TREE

PROP. SHRUB

PROP. CONIFER TREE

< 14" DBH INDIVIDUAL TREE REMOVED

≥ 14" DBH INDIVIDUAL TREE REMOVED
(SHLO)

≥ 14" DBH INDIVIDUAL TREE REMOVED
(TOWN/COUNTY LAYOUT)

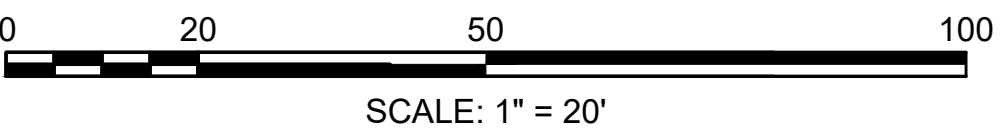
≥ 14" DBH INDIVIDUAL TREE REMOVED
(PRIVATELY OWNED)

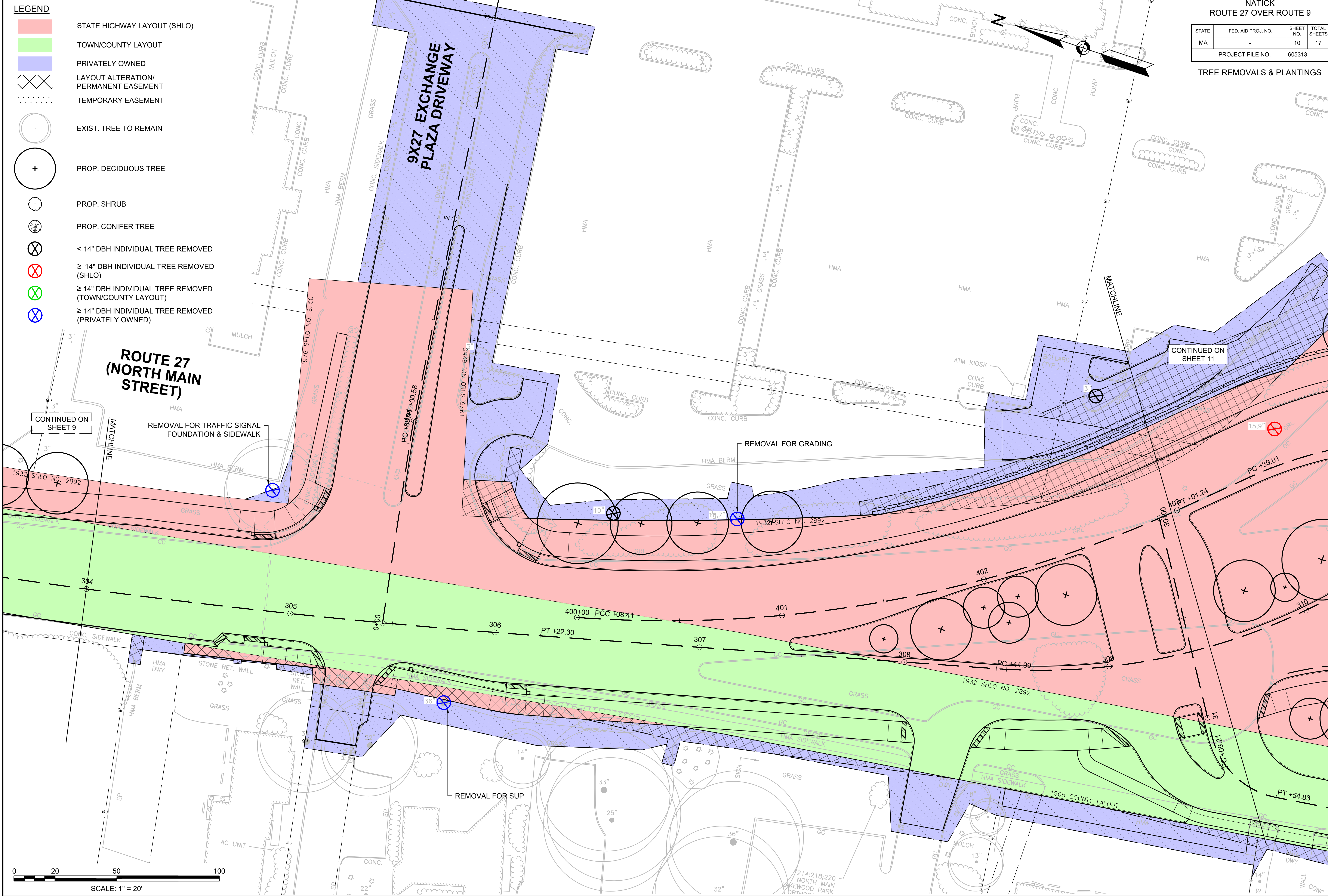
NATICK ROUTE 27 OVER ROUTE 9			
STATE	FED. AID PROJ. NO.	SHEET NO.	TOTAL SHEETS
MA	-	9	17
PROJECT FILE NO.		605313	

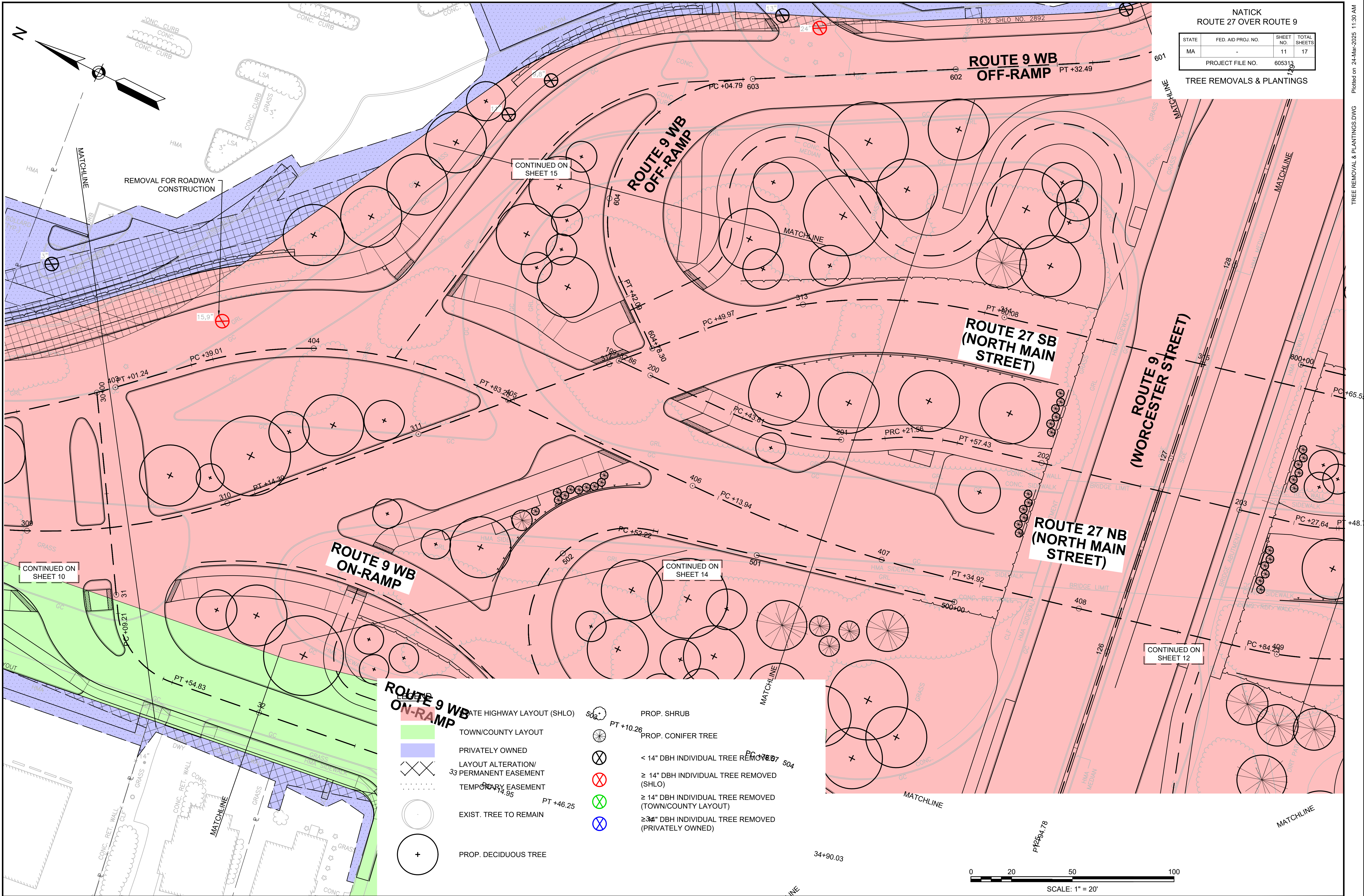
TREE REMOVALS & PLANTINGS

CONTINUED ON
SHEET 10

REMOVAL FOR TRAFFIC SIGNAL
FOUNDATION & SIDEWALK







NATICK ROUTE 27 OVER ROUTE 9			
STATE	FED. AID PROJ. NO.	SHEET NO.	TOTAL SHEETS
MA	-	11	17
PROJECT FILE NO.		605313	
TREE REMOVALS & PLANTINGS			

ROUTE 9 WB ON-RAMP

ROUTE 9 WB ON-RAMP

STATE HIGHWAY LAYOUT (SHLO)

TOWN/COUNTY LAYOUT

PRIVATELY OWNED

LAYOUT ALTERATION/
PERMANENT EASEMENT

TEMPORARY EASEMENT

EXIST. TREE TO REMAIN

PROP. DECIDUOUS TREE

PT +10.26

PT +46.25

PROP. SHRUB

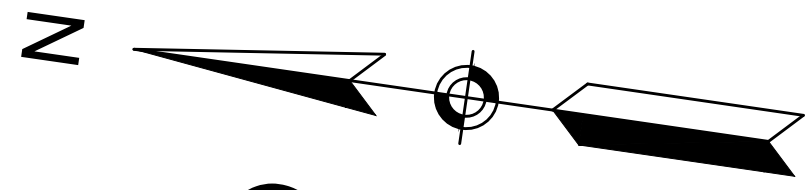
PROP. CONIFER TREE

< 14" DBH INDIVIDUAL TREE REMOVED (SHLO)

≥ 14" DBH INDIVIDUAL TREE REMOVED (TOWN/COUNTY LAYOUT)

≥ 34" DBH INDIVIDUAL TREE REMOVED (PRIVATELY OWNED)

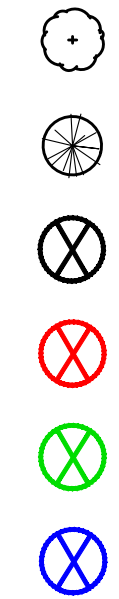
Plotted on 24-Mar-2025 11:30 AM
TREE REMOVAL & PLANTINGS.DWG



LEGEND



STATE HIGHWAY LAYOUT (SHLO)
TOWN/COUNTY LAYOUT
PRIVATELY OWNED
LAYOUT ALTERATION/
PERMANENT EASEMENT
TEMPORARY EASEMENT
EXIST. TREE TO REMAIN
PROP. DECIDUOUS TREE

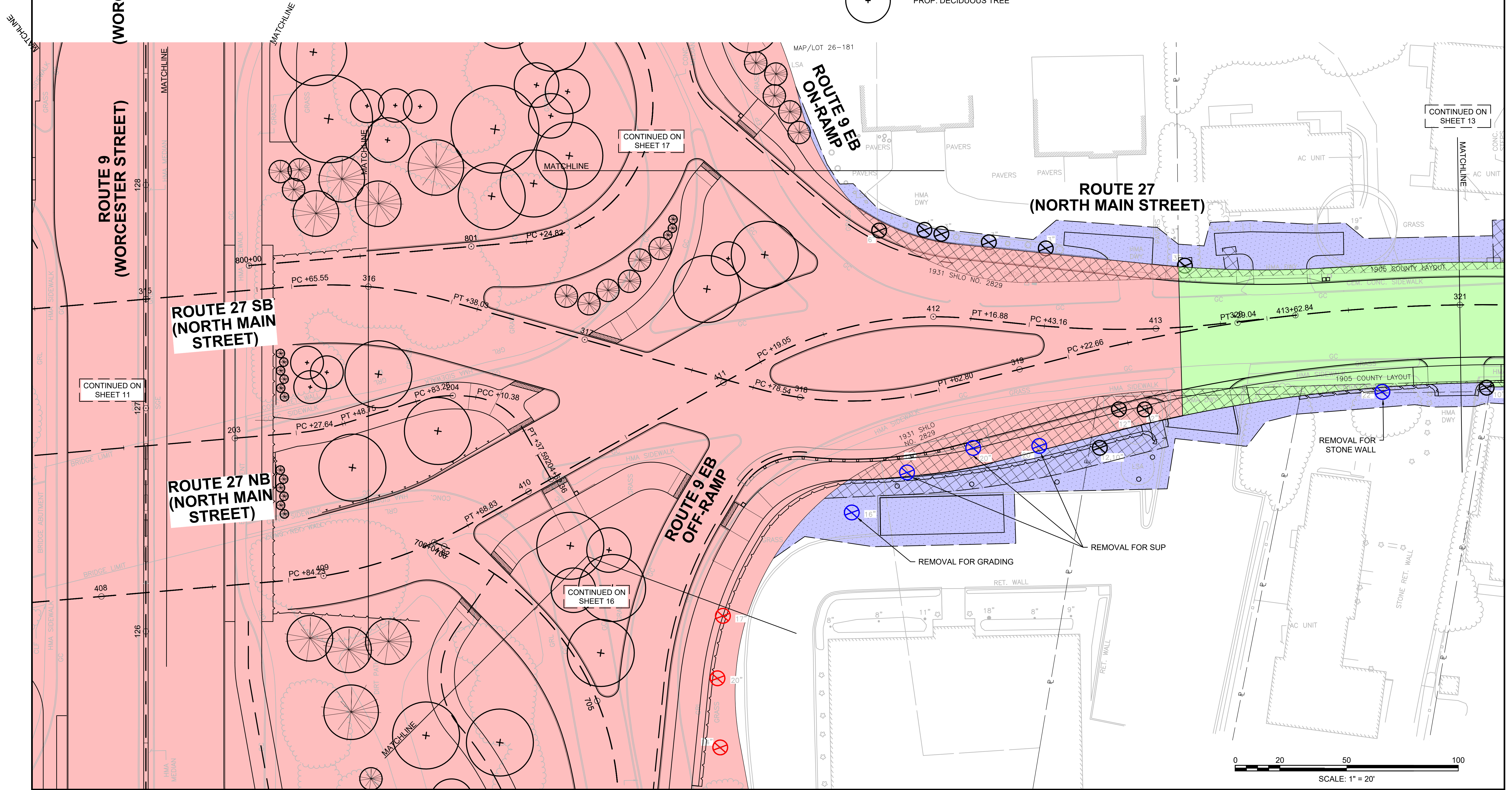


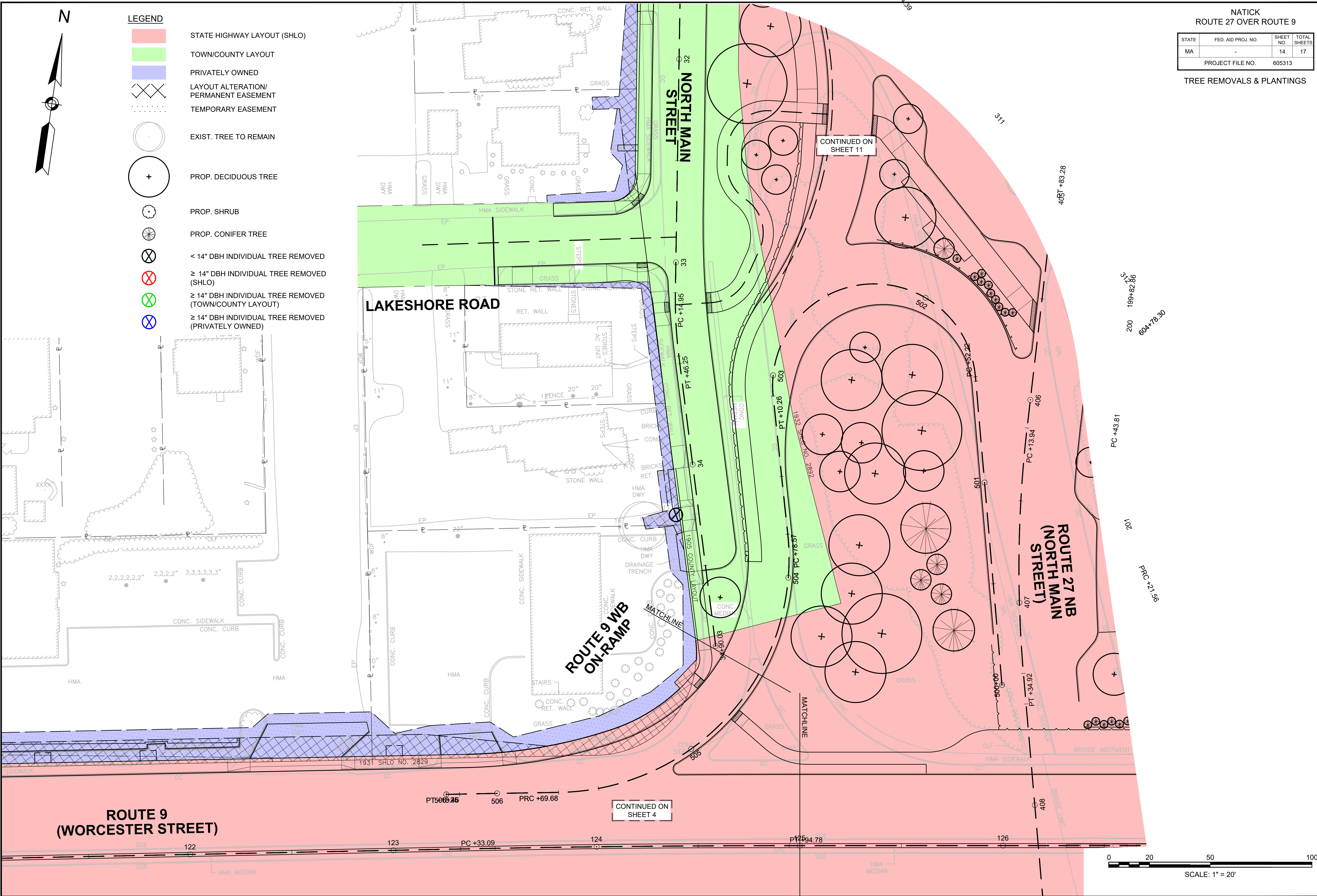
PROP. SHRUB
PROP. CONIFER TREE
< 14" DBH INDIVIDUAL TREE REMOVED
≥ 14" DBH INDIVIDUAL TREE REMOVED (SHLO)
≥ 14" DBH INDIVIDUAL TREE REMOVED (TOWN/COUNTY LAYOUT)
≥ 14" DBH INDIVIDUAL TREE REMOVED (PRIVATELY OWNED)

NATICK
ROUTE 27 OVER ROUTE 9

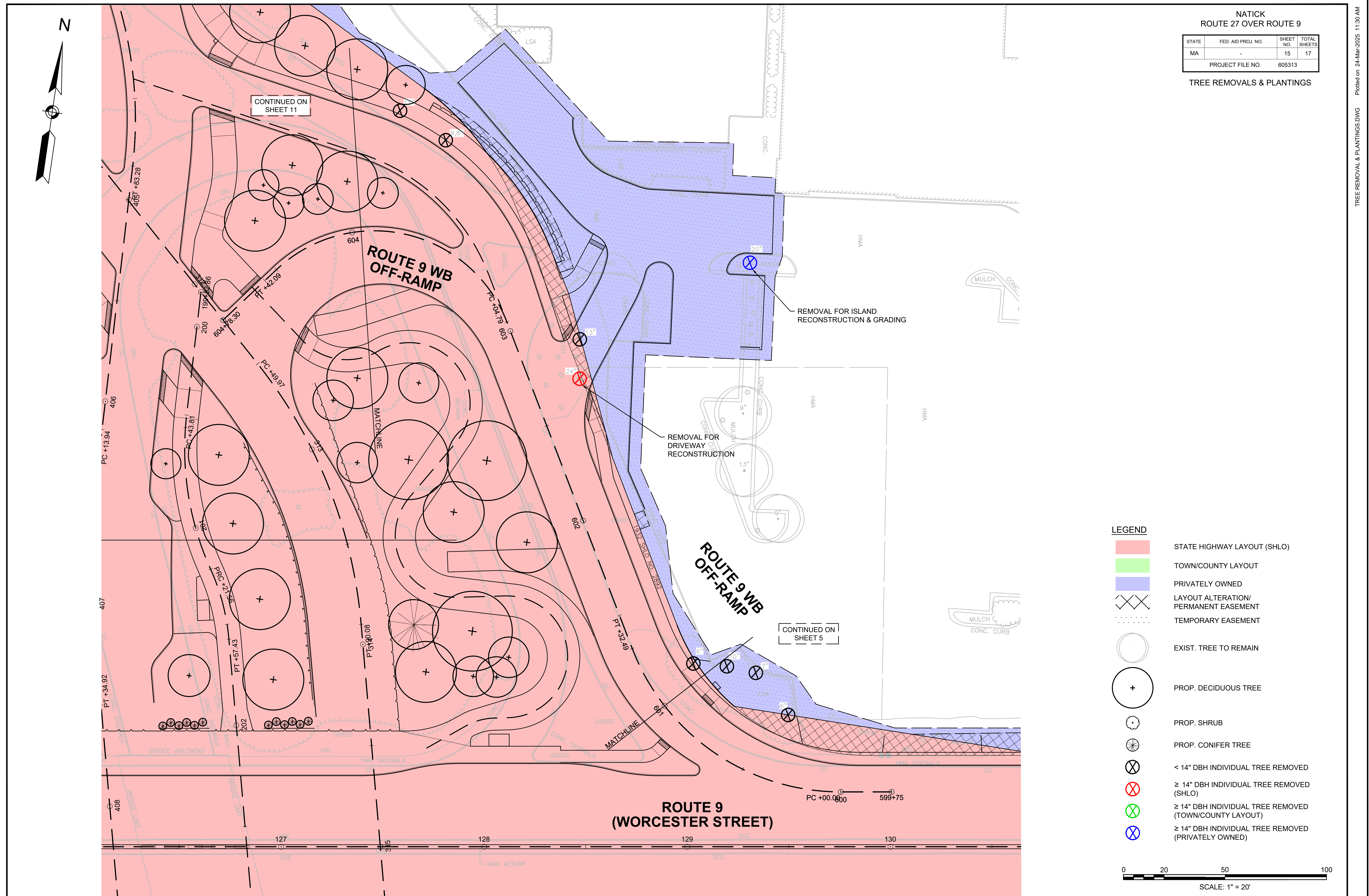
STATE	FED. AID PROJ. NO.	SHEET NO.	TOTAL SHEETS
MA	-	12	17
PROJECT FILE NO.		605313	

TREE REMOVALS & PLANTINGS





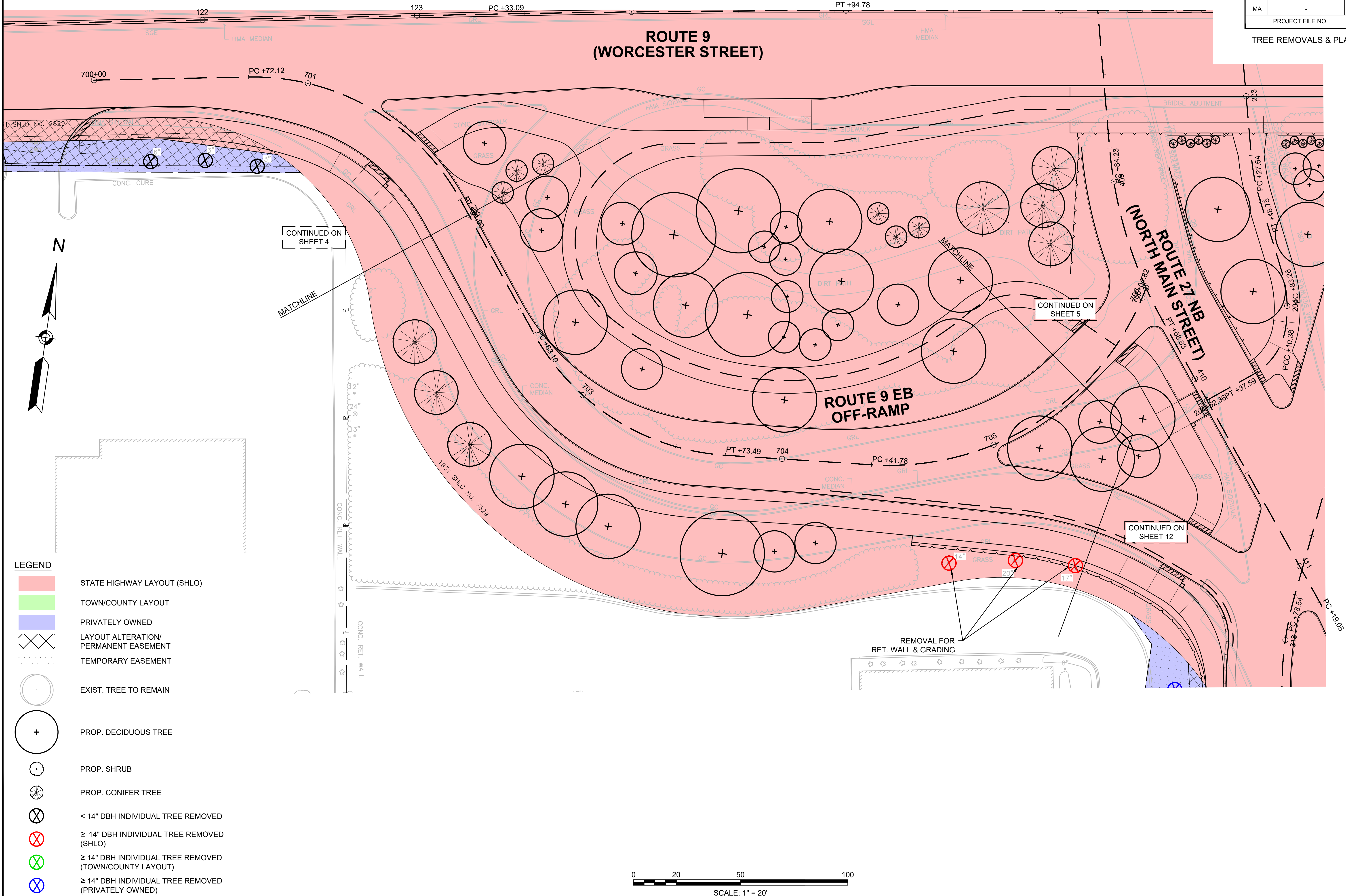
NATICK ROUTE 27 OVER ROUTE 9			
STATE	FED. AID PROJ. NO.	SHEET NO.	TOTAL SHEETS
MA	-	14	17
PROJECT FILE NO.		605313	
TREE REMOVALS & PLANTINGS			

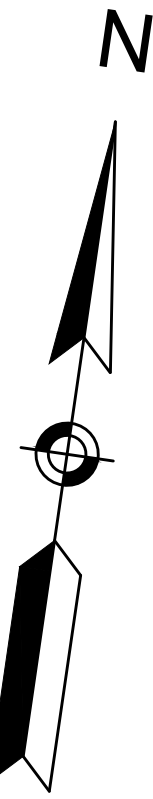


NATICK
ROUTE 27 OVER ROUTE 9

STATE	FED. AID PROJ. NO.	SHEET NO.	TOTAL SHEETS
MA	-	16	17
PROJECT FILE NO.		605313	

TREE REMOVALS & PLANTINGS





NATICK ROUTE 27 OVER ROUTE 9			
STATE	FED. AID PROJ. NO.	SHEET NO.	TOTAL SHEETS
MA	-	17	17
PROJECT FILE NO.		605313	
TREE REMOVALS & PLANTINGS			

- LEGEND**
- STATE HIGHWAY LAYOUT (SHLO)
 - TOWN/COUNTY LAYOUT
 - PRIVATELY OWNED
 - LAYOUT ALTERATION/
PERMANENT EASEMENT
 - TEMPORARY EASEMENT
 - EXIST. TREE TO REMAIN
 - PROP. DECIDUOUS TREE
 - PROP. SHRUB
 - PROP. CONIFER TREE
 - < 14" DBH INDIVIDUAL TREE REMOVED
 - ≥ 14" DBH INDIVIDUAL TREE REMOVED (SHLO)
 - ≥ 14" DBH INDIVIDUAL TREE REMOVED (TOWN/COUNTY LAYOUT)
 - ≥ 14" DBH INDIVIDUAL TREE REMOVED (PRIVATELY OWNED)

