



MASSACHUSETTS DEPARTMENT OF  
CONSERVATION AND RECREATION

# Neponset Greenway Improvements

## Neponset Landing II Spray Deck



**DCR Project Presentation**  
**February 2024**



# Commonwealth of Massachusetts

Governor

**Maura T. Healey**

Lieutenant Governor

**Kimberley Driscoll**

Energy and Environmental Secretary

**Rebecca L. Tepper**

Department of Conservation and Recreation Commissioner

**Brian Arrigo**



## *DCR Mission*

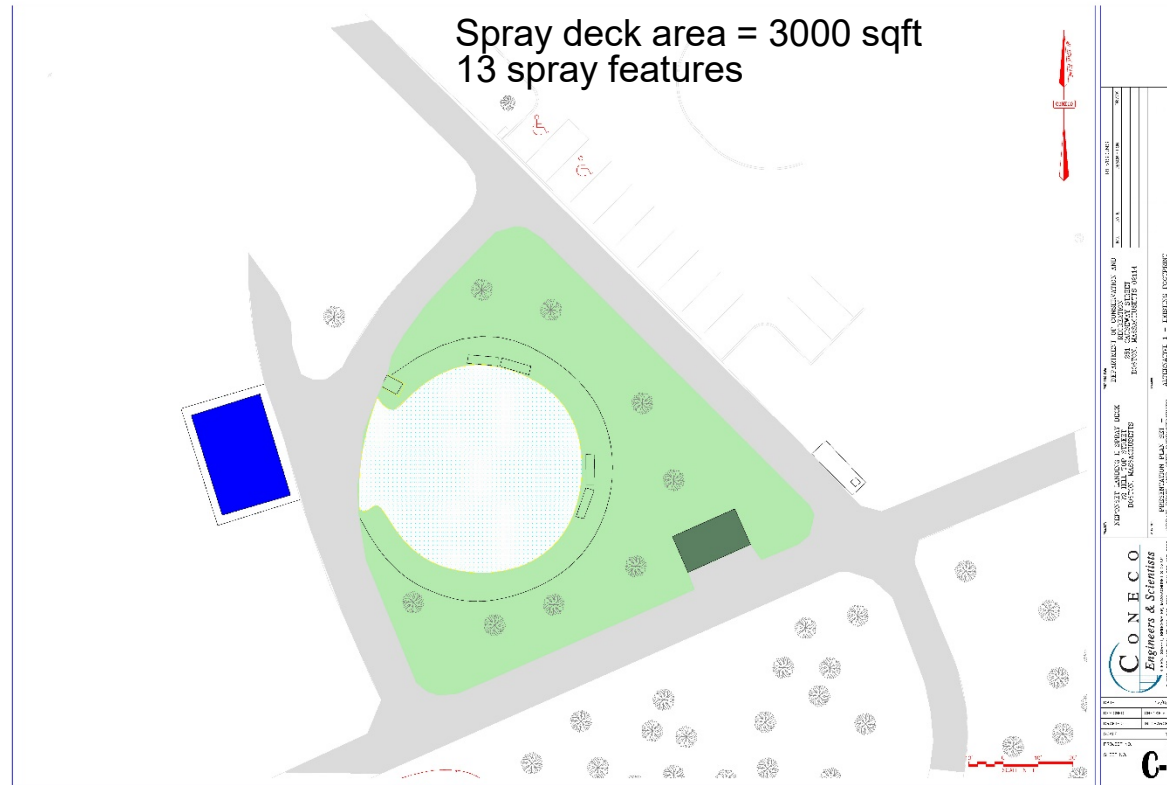
*To protect, promote and enhance  
our common wealth of natural,  
cultural and recreational resources  
for the well-being of all.*

## Purpose of Project:

- Improvements to an aging Spray Deck
- Existing issues that must be addressed:
  - Failing rubber surface – tripping hazards
  - A number of spray features no longer operate
  - Controls no longer function properly
  - Supply piping likely failing
  - Undersized for demand

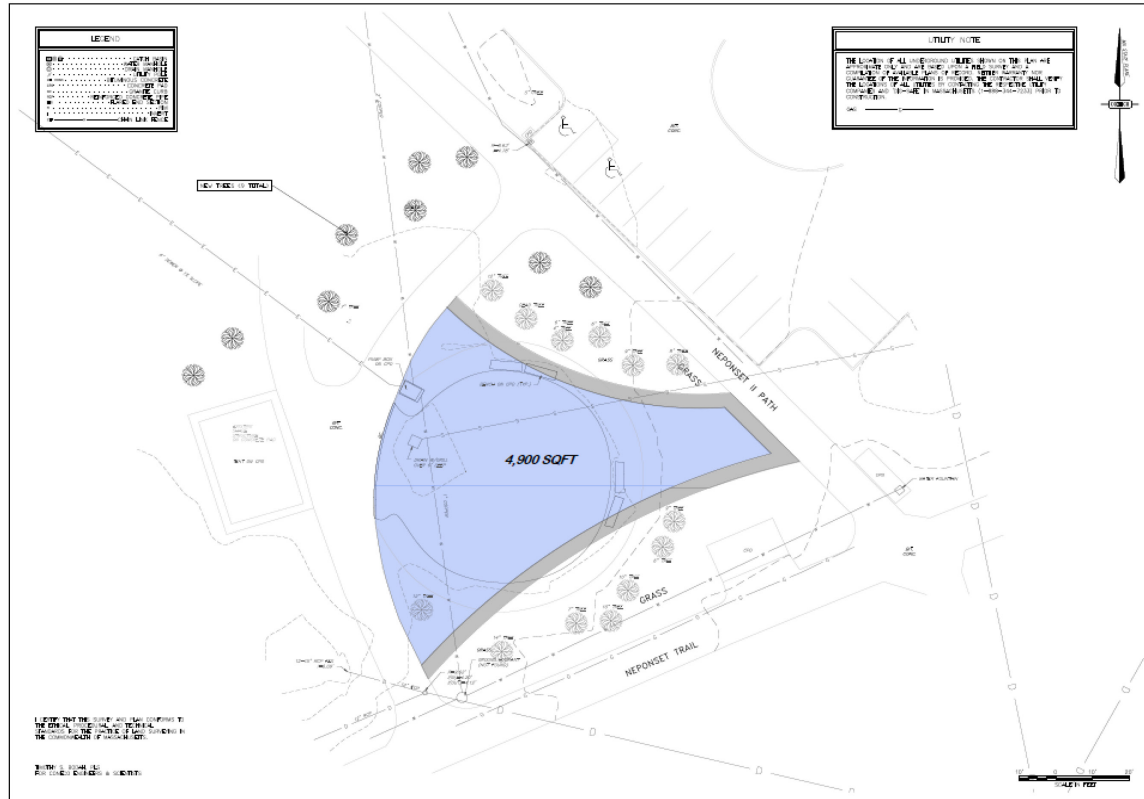


Project Purpose



- Alternative 1A – Rehabilitate existing spray deck within current circular footprint.
  - New Surfacing
  - New spray features and controls
  - New supply piping

## Neponset Landing II Spray Deck Proposed Alternatives



- Alternative 1B – Rehabilitate existing spray deck within current footprint. Change in shape and rubber to connect with pathways
  - New Surfacing
  - New spray features and controls (16 features)
  - New supply piping

## Neponset Landing II Spray Deck Proposed Alternatives



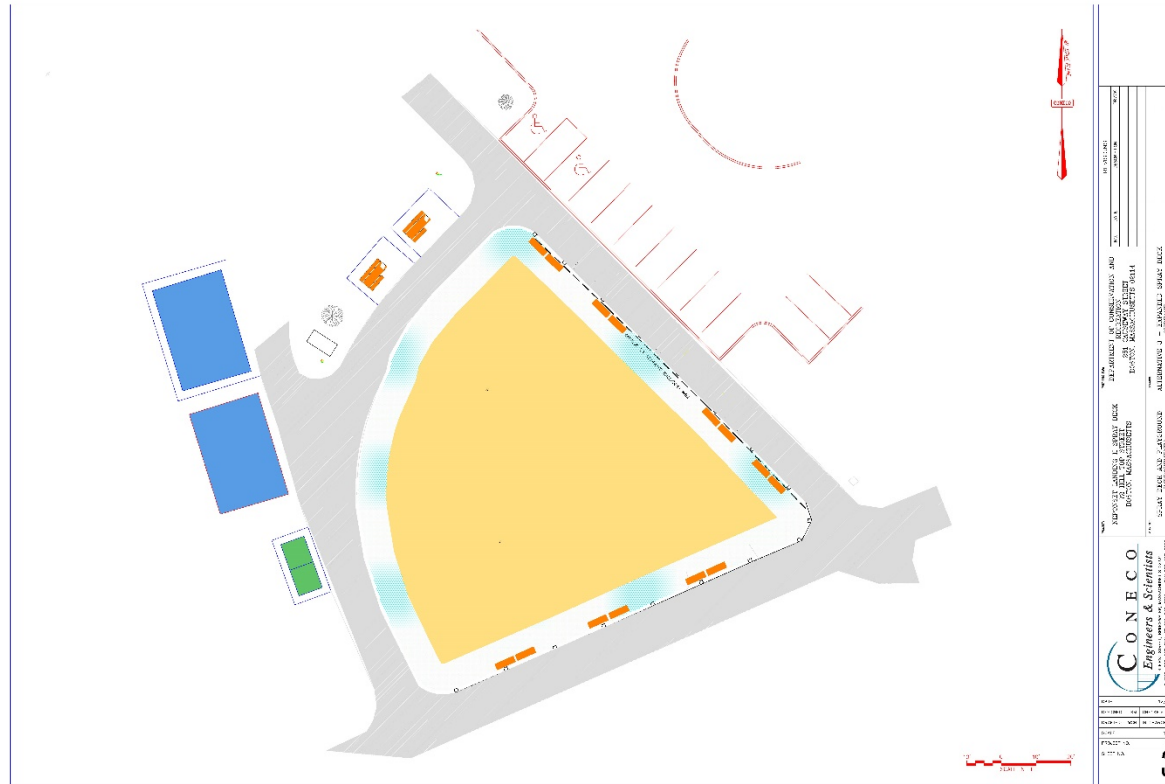


Spray deck area =  
6,000 sqft

23 spray features

- Alternative 2 – Create new expanded spray deck with added amenities
  - Spray deck footprint doubled in size
  - All new surfacing, spray features, piping and controls
  - Additional shade structures and benches

## Neponset Landing II Spray Deck Proposed Alternatives



Spray deck area =  
7,300 sqft

30 (est) spray  
features (many low  
flow)

- Alternative 3 – Create new expanded spray deck with added amenities
  - Spray deck footprint doubled in size
  - All new surfacing, spray features, piping and controls
  - Additional shade structures and benches

## Neponset Landing II Spray Deck Proposed Alternatives

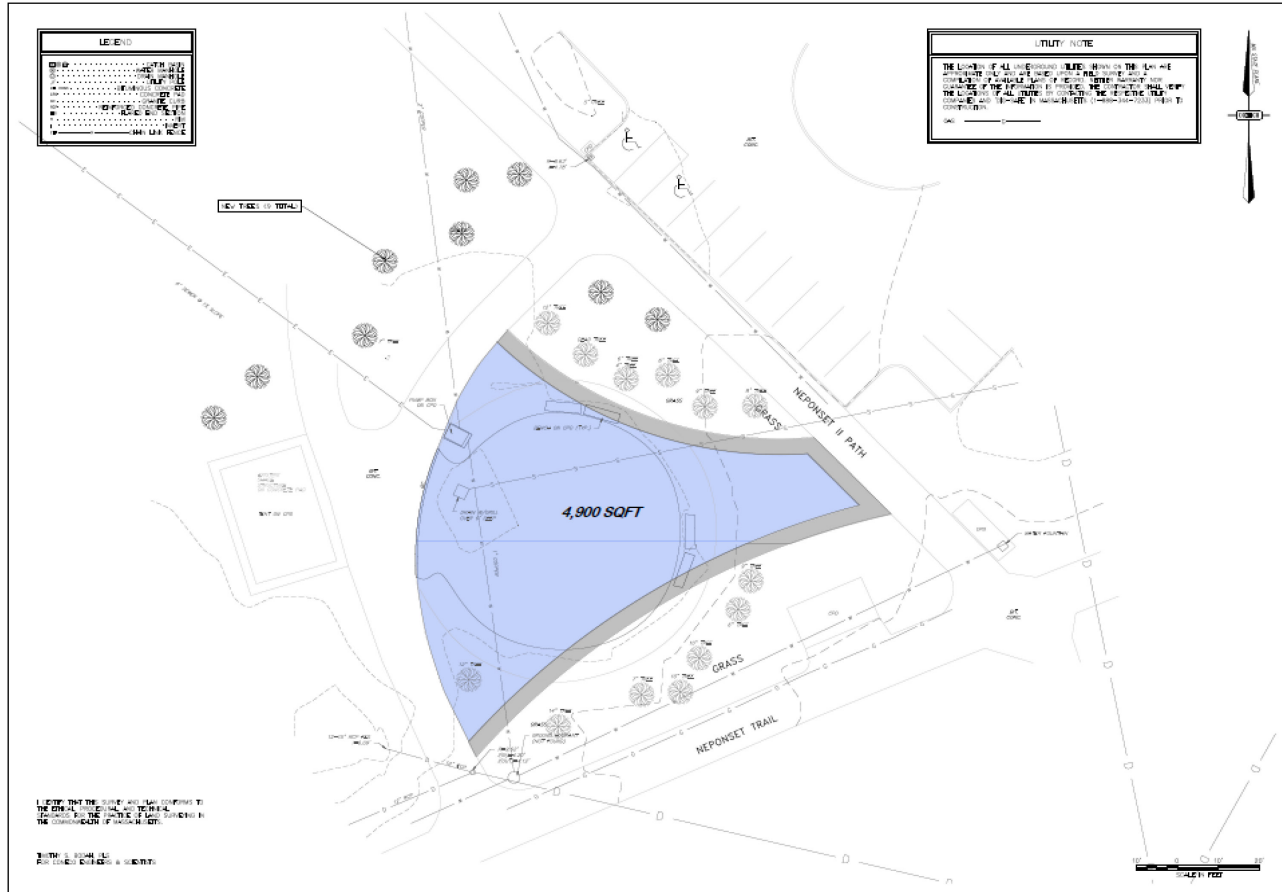




## Alternative Summary/Pros & Cons

- Rehabilitation within current footprint (Alt. #1A & 1B)
  - 1A – Circular spray deck footprint (13 spray features)
  - 1B – Deck rubber connect to pathways (16 spray features)
  - Additional shade structures and benches
  - Existing trees remain
- New expanded spray deck with added amenities (Alt. #2 & #3)
  - Spray deck footprint doubled in size
  - New rubber surfacing, 23-30 spray features
  - Additional shade structures and benches
  - *Difference between #2 & #3 is surrounding lawn/greenspace*

Neponset Landing II Spray Deck  
Proposed Alternatives



4800 sq. ft. spray  
deck rubber surface  
area

16 spray features

Connections to  
pathways

New shade pavilion

Maintains trees and  
green space  
perimeter areas

- Recommended - Alternative 1B

## Neponset Landing II Spray Deck Recommended Alternative

# Additional Information

- Tonight's slide deck will be available at:
  - [www.mass.gov/dcr/past-public-meetings](http://www.mass.gov/dcr/past-public-meetings)
- If you have comments on this project:
  - *Submit online:* [www.mass.gov/dcr/public-comment](http://www.mass.gov/dcr/public-comment)
  - *Deadline: Monday, March 11th, 2024*

*Please note: the contents of comments submitted to DCR, including your name, town and zip code, will be posted on DCR's website. Additional contact information provided, notably email address, will only be used for outreach on future updates to the subject project or property.*

- If you wish to subscribe to a DCR general information or project-related listserv: contact DCR's Office of Community Relations via email at [mass.parks@mass.gov](mailto:mass.parks@mass.gov)