

2023 CHARLES E. SHANNON COMMUNITY SAFETY INITIATIVE NEW BEDFORD

Funded Partners: Bristol County District Attorney's Office, New Bedford Police Department, NorthStar Learning Center

Funded by the Office of Grants and Research, a state agency that is part of the Executive Office of Public Safety and Security, the Charles E. Shannon Community Safety Initiative (Shannon) is modeled after the Office of Juvenile Justice and Delinquency Prevention's Comprehensive Gang Model. Shannon is a multi-sector approach used to address a community's gang and youth violence problem. Each community receiving Shannon funding demonstrates the presence of risk factors for youth and gang violence. Shannon participants must be between the ages of 10-24 years.

Strategies, Outcomes, and Funding Allocation

Total Funding: \$1,097,167.80

Strategies	Outcomes	Funding Allocation
Case Management, Street Outreach, or Intervention	268 youth received case management services 31 street outreach deployments to interrupt retaliation or mediate a situation	\$348,675.07
Community Mobilization	12,050 community members attended events, meetings, & presentations 170 community events, meetings, & presentations held	\$174,337.54
Education & Employment	21 youth participated in education programs	\$174,337.54
Positive Youth Development & Recreation	17 youth participated in recreation programs 93 youth participated in youth development programs	\$174,337.54
Suppression	84 hot spot patrols completed 126 gang members/high impact players arrested	\$225,480.12

Youth Risk Assessments

- 13% **LOW-RISK*** Youth in danger of engaging in risky behavior or gang activity.
- 30% **MODERATE-RISK*** Youth exposed to the same risk factors as low-risk youth, as well as additional risk factors such as truancy.
- 57% **HIGH-RISK*** Youth who are perpetrators or victims of shooting or stabbing violence, and/or are known gang members.

* % of youth assessed for risk

Success Highlight

“One of our young men has faced many challenges and adversity along his journey. From living in a dangerous neighborhood with many negative influences surrounding him, having older siblings who are gang-involved, and having every reason to follow their lead, it was never an easy task to get to the point where he is today. He was kicked out of public schools, arrested, convicted, and faced many consequences for his behavior. While working with him, we built his social, emotional, and decision-making skills. Once he took accountability for his choices, he made positive strides. He now attends high school daily and passes his classes with all A's and B's. He is set to graduate in June of 2024 and works part-time. He has achieved every goal he has set for himself and hopes to become an electrician once he graduates this year. He has become a positive leader to peers around him at school and in his community, and thanks the Shannon Program for helping him

become the person he is today.”
~New Bedford Site Manager

Community Risk Factors

Massachusetts

New Bedford

Total Population (2022/2023 Estimates)	7,001,399	100,682
Population Lives in Poverty	10.4%	18.8%
Unemployment Rate (Jan. – Nov. 2023)	3.1%	5.0%
Total School Population (2022-23)	964,066	15,311
Low-Income	42.2%	79.8%
High School Dropout Rate (2020-21)	2.1%	6.2%

Sources: www.census.gov/quickfacts; profiles.doe.mass.edu; www.lmi.dua.eol.mass.gov/LMI/LaborForceAndUnemployment

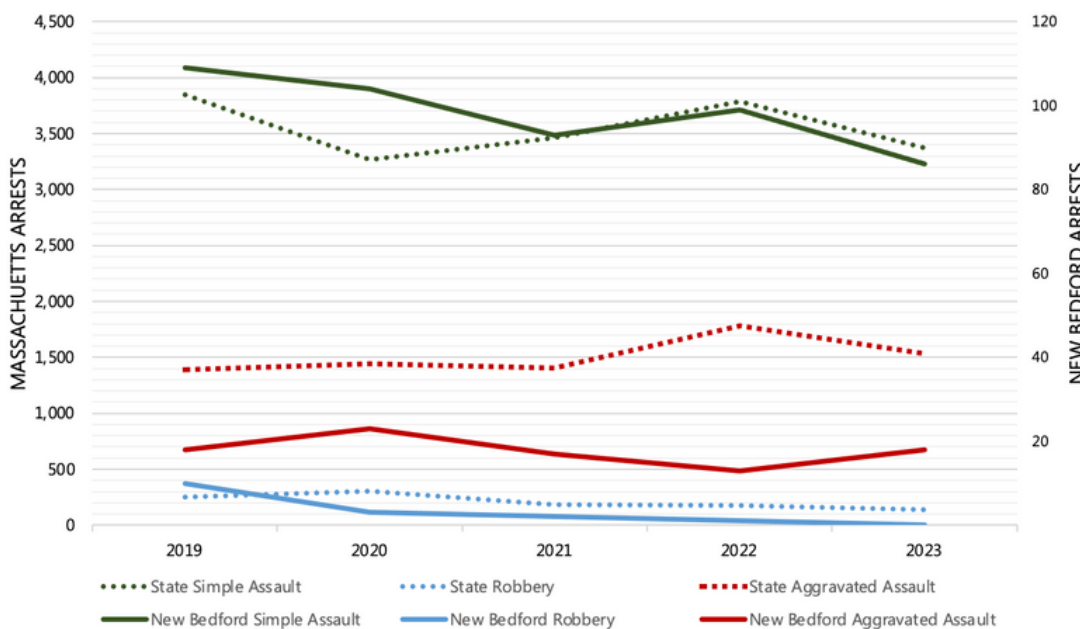
Gang Activity in New Bedford

12
Street Gangs

60
Gang Members
between the Ages
of 10-24

The New Bedford gangs are considered "hybrid" street gangs and include individuals "repping" a particular geographical part of a city and sometimes a national gang affiliation. They have been involved in violent activity targeting their rivals, such as shootings, stabbings, and assaults, for over two decades. Means of recruitment are through family, friends, social media, and living in certain sections of the city. The use of social media in gang-affiliated crimes has increased recently. Gang associates are utilizing professionally produced music videos to call out rival gangs. Associates of the South First St gang and Blue Meadows Posse were involved in numerous shootings targeting their rivals during this past summer.

5-Year Crime Trends for Offenses Committed by Youth Ages 10-24, 2019-2023



Changes in Crime for Young People Ages 10-24, 2019-2023

- Simple assaults in...
- Massachusetts decreased 12%
 - New Bedford decreased 21%
- Robberies in...
- Massachusetts decreased 46%
 - New Bedford decreased 100%
- Aggravated assaults in...
- Massachusetts increased 10%
 - New Bedford decreased 0%

Source: National Incident Based Reporting System (NIBRS)

Information contained in this report is from funding applications, reports supplied by the site, MA Department of Elementary and Secondary Education, US Census, MA Executive Office of Labor and Workforce Development, and Office of Grants and Research / Research Policy and Analysis Division. Special thanks to the Statewide Research Partner, Northeastern University, and the Crime and Justice Policy Lab of the University of Pennsylvania, for preparing this brief.