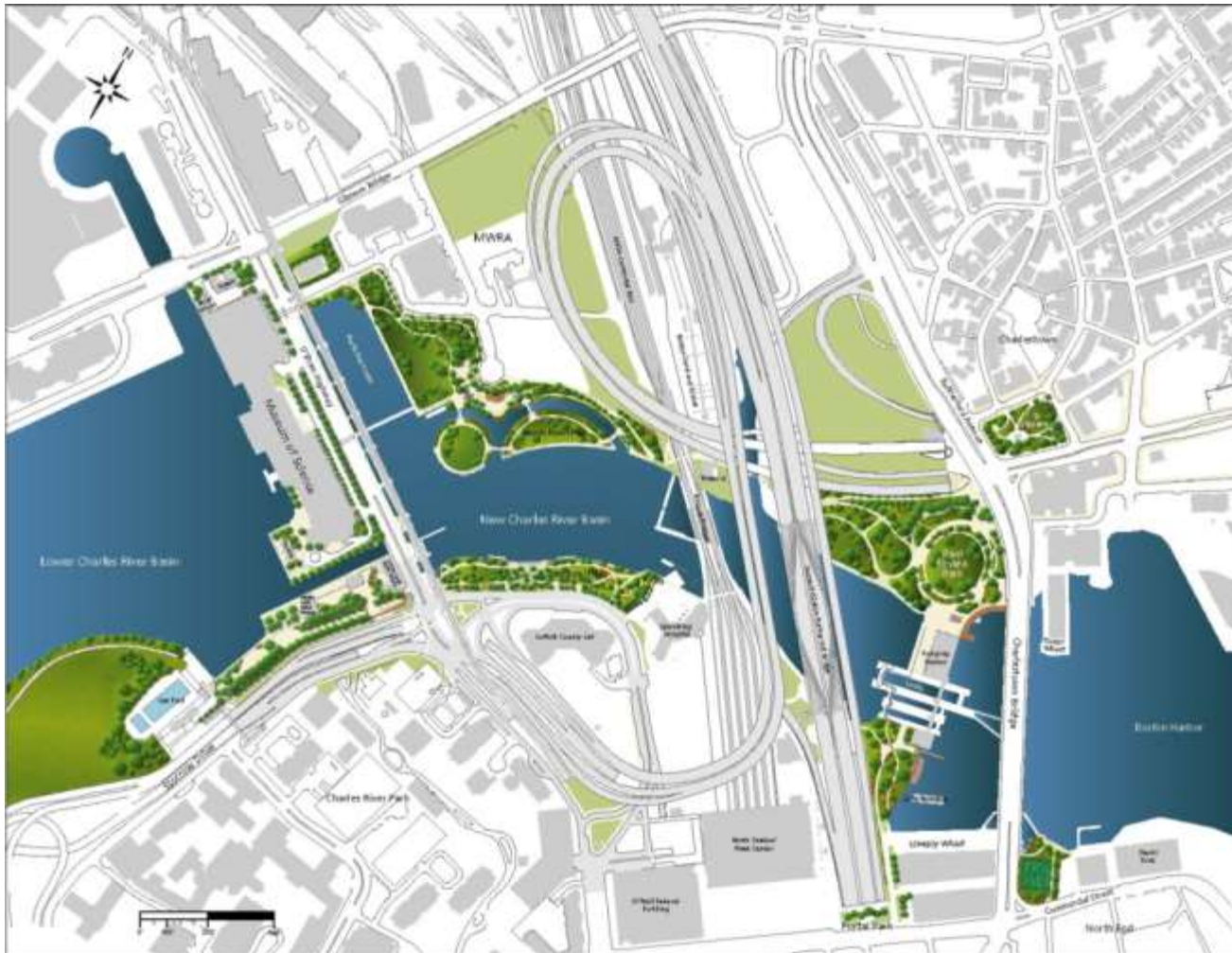


## New Charles River Basin



New Charles River Basin Citizens Advisory Committee, April 5, 2016

## Mitigation Background

- Mitigation for the Big Dig Charles River crossing included \$99.1 million for park improvements in the Charles River Basin.
- The \$30.5 million remaining balance from that amount has been transferred to DCR under an executed ISA to complete five projects
- MassDOT completed the North Bank Bridge and associated landscaping in 2012 through the American Recovery and Reinvestment Act of 2009
- The Lovejoy Wharf walkway has been completed by the developer of 160 North Washington Street
- The Lynch Family Skate Park has been completed by the Charles River Conservancy and opened on November 14, 2015

# DCR Mitigation Measures Status and Schedule

| Mitigation Measure  | Current Status                             | FY 2016  | FY 2017  | FY 2018  |              |
|---|--|--|--|--|--------------|
| <b>Stockpile Remediation</b>  | Phasing, estimates complete                | 6/30/15 Update study following EF III review   |  |  | \$3,200,000  |
| <b>Maintenance facility</b>   | Temporary facility completed<br>Study 100% | 6/30/15 Update study following EF III review   |  |  | \$2,700,000  |
| <b>Historic Dam Restoration</b><br><br>Stable<br><br>Lower Lock Gate House<br><br>Upper Lock Gate House<br><br>Boat House | Complete<br><br>DCAMM study completed      | 9/1/16 Design start<br><br>9/1/16 Design start | 6/30/17 Design 100%<br><br>6/30/17 Design 100% | 12/31/18 Construction 100%<br><br>12/31/18 Construction 100% | \$5,200,000  |
| <b>Draw bridge Walkway</b>  | Design 60%                                 | Complete MBTA study                            |  |  | \$3,250,000  |
| <b>South Bank Bridge</b>  | Under design                               | 3/31/16 Design 15%                             | 12/31/16 Design 100%                           | 6/30/18 Construction 50%                                     | \$15,900,000 |
|   |  |  |  |  | \$30,250,000 |

# MassDOT and other New Basin Projects

**If sufficient funding remains after the required mitigation measures are completed, some of these projects may be funded**

|  | Current Status             | FY 2016                                      | FY 2017 | FY 2018 | FY 2019 |
|--|----------------------------|--|---------|---------|---------|
| North Bank Bridge  | COMPLETED                  |  |         |         |         |
| North Point Skate Park                                   | COMPLETED                  |  |         |         |         |
| EF Education II  | COMPLETED                  |  |         |         |         |
| Lovejoy Wharf Walkway                                    | COMPLETED                  |  |         |         |         |
| South Bank Park (was part of North Bank Bridge contract) | Conceptual design complete | Design complete<br>MassDOT funded obligation |         |         |         |
| Leverett Circle pedestrian bridge                        | MassDOT designer selected  | MassDOT funding obligation                   |         |         |         |
| North Point Inlet Pedestrian Bridge                      | MassDOT/<br>Cambridge MOA  |  |         |         |         |
| EF Education III   | EF EDUCATION               |  |         |         |         |

## Lovejoy Wharf, February 2013



New Charles River Basin Citizens Advisory Committee, April 5, 2016

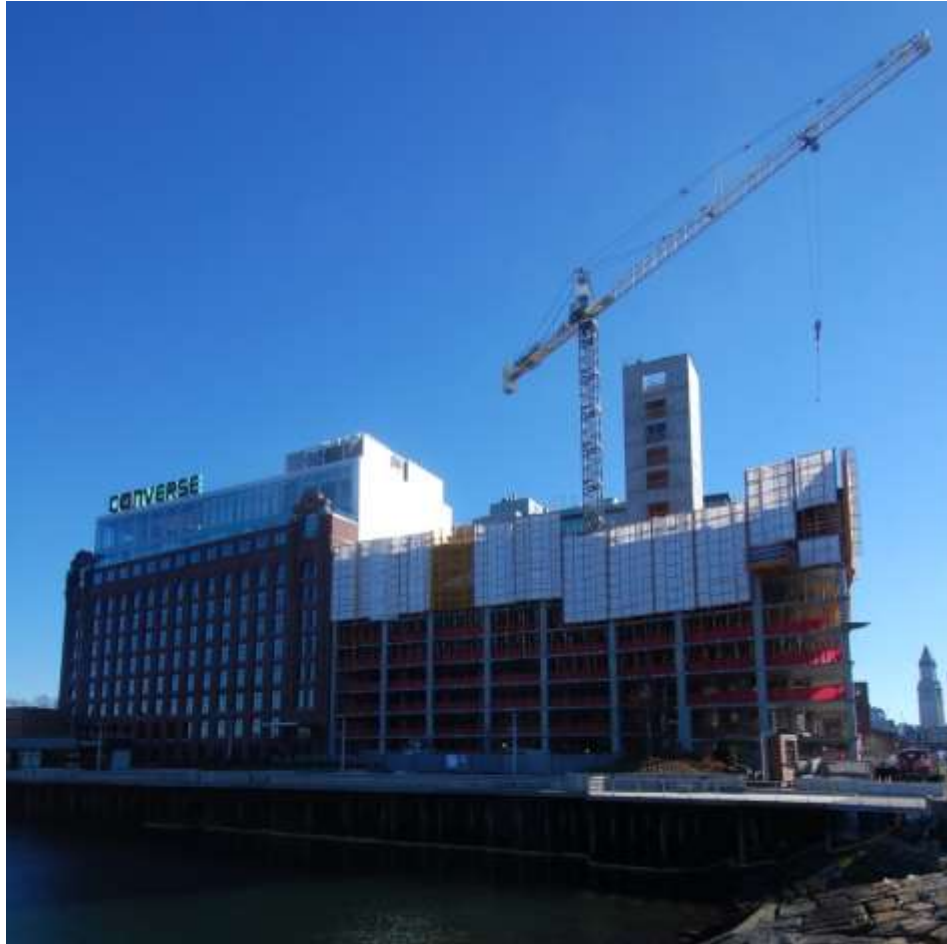
## Lovejoy Wharf, January 2015



New Charles River Basin Citizens Advisory Committee, April 5, 2016



## Lovejoy Wharf, December 2015



New Charles River Basin Citizens Advisory Committee, April 5, 2016

## Lovejoy Wharf, December 2015



New Charles River Basin Citizens Advisory Committee, April 5, 2016



## Lovejoy Wharf, March 2016



New Charles River Basin Citizens Advisory Committee, April 5, 2016

## Lovejoy Wharf, March 2016



New Charles River Basin Citizens Advisory Committee, April 5, 2016

## Lovejoy Wharf, March 2016



New Charles River Basin Citizens Advisory Committee, April 5, 2016



## Lovejoy Wharf, December 2015



New Charles River Basin Citizens Advisory Committee, April 5, 2016

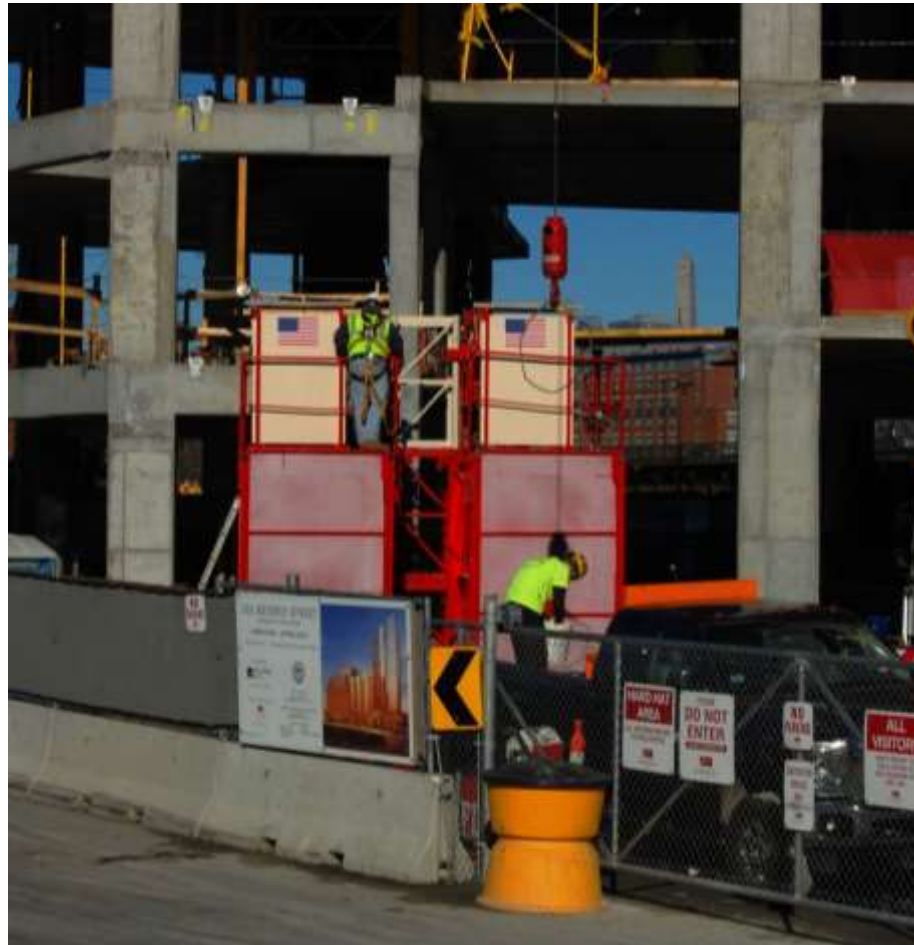
## 131 Beverly Street, December 2015



New Charles River Basin Citizens Advisory Committee, April 5, 2016



## 131 Beverly Street, December 2015



New Charles River Basin Citizens Advisory Committee, April 5, 2016

## Lynch Family Skate Park



New Charles River Basin Citizens Advisory Committee, April 5, 2016

## Lynch Family Skate Park





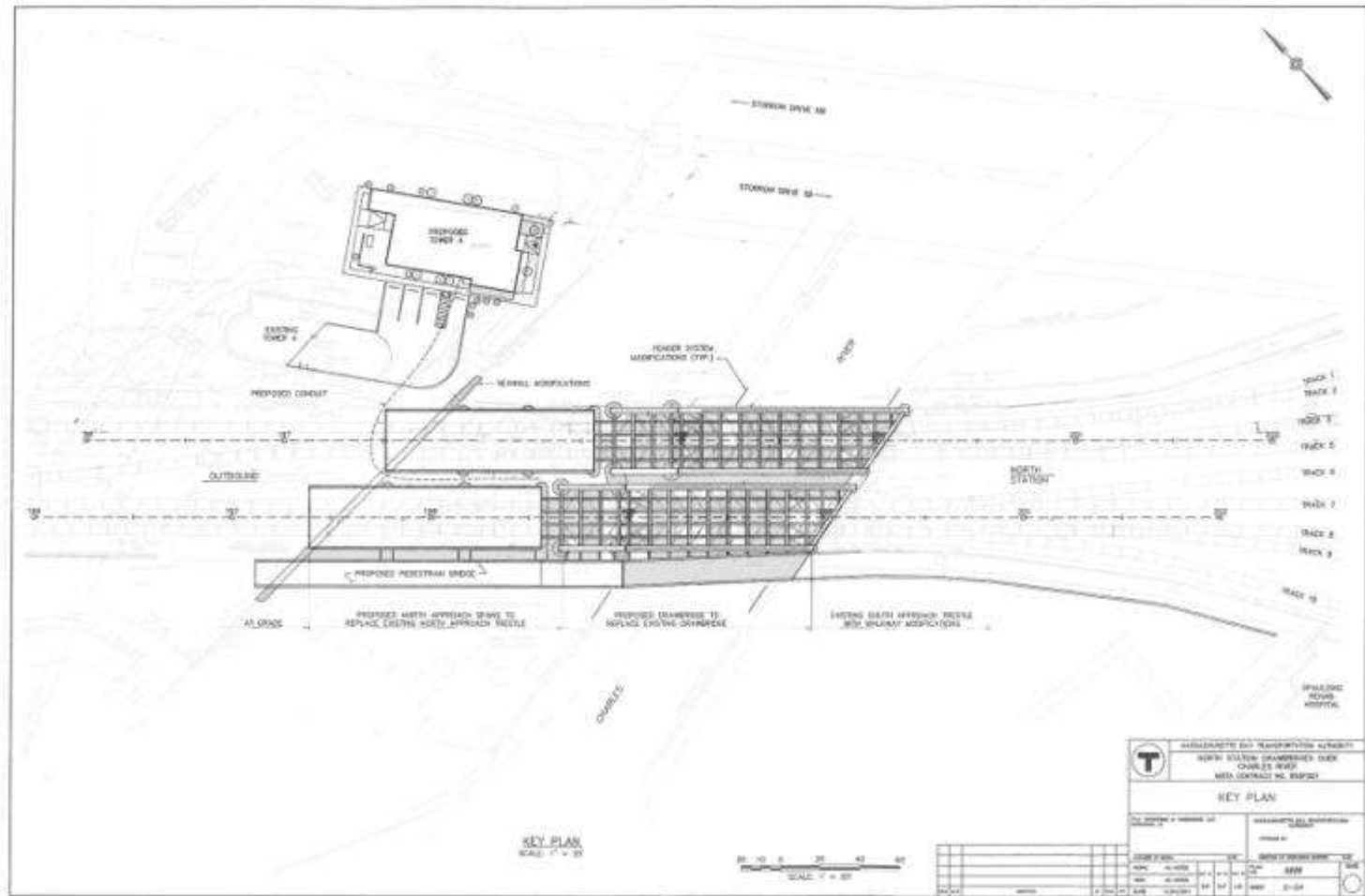




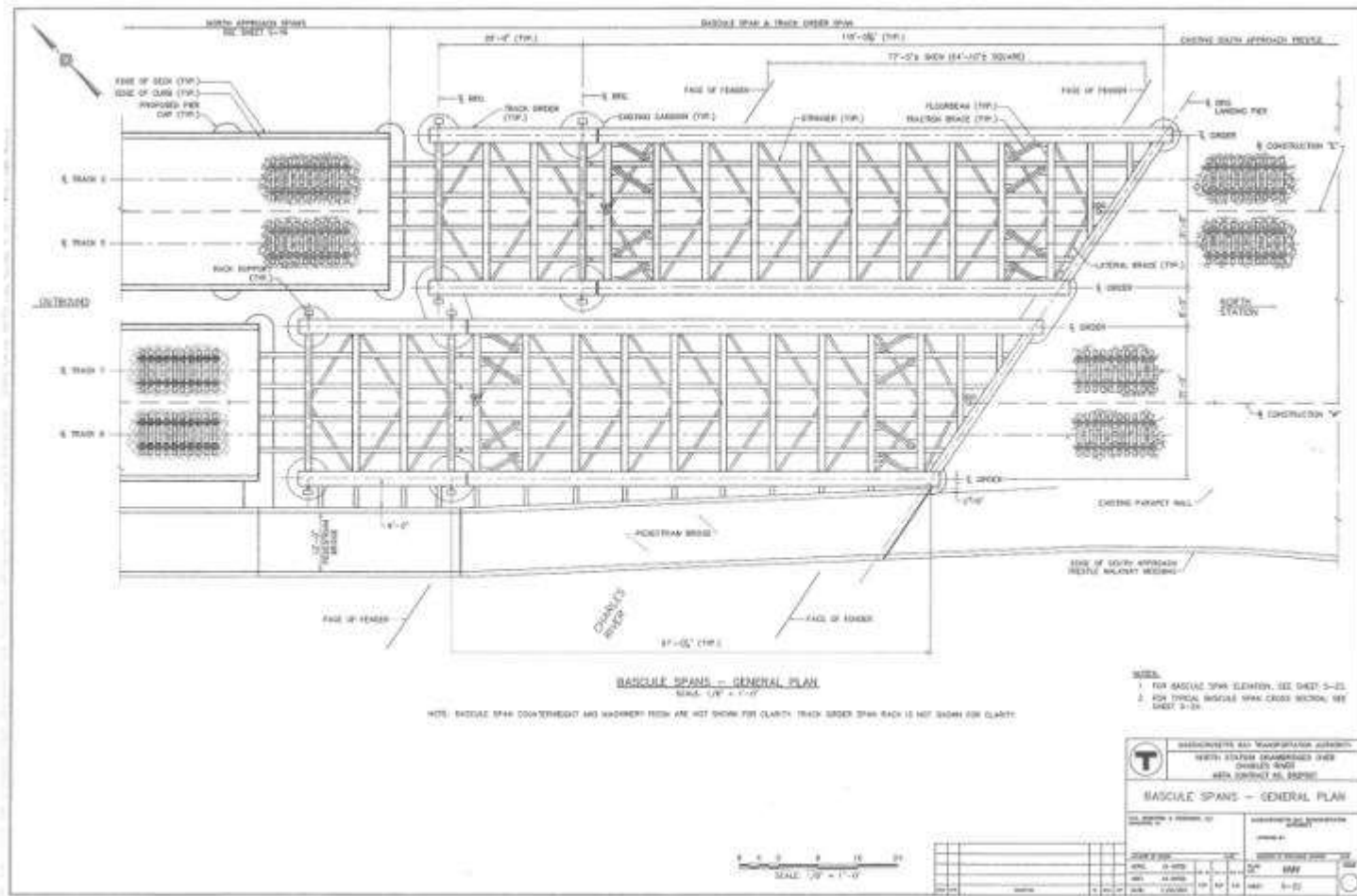
New Charles River Basin Citizens Advisory Committee, April 5, 2016



## Drawbridge Walkway



## Drawbridge Walkway







New Charles River Basin Citizens Advisory Committee, April 5, 2016

## Upper Lock Gate House



New Charles River Basin Citizens Advisory Committee, April 5, 2016



## South Bank Bridge



**LOWER BASIN BARRACKS  
MODERNIZATION**  
Massachusetts State Police

**Project Overview**



# Project Purpose

- Massachusetts State Police require an upgraded barracks at current location to address public safety in the Charles River Lower Basin and patrol transportation infrastructure
- Current facility is in poor condition, undersized and dysfunctional
- Permanent presence of MassDOT drawbridge operator will be maintained
- Public access and recreation uses will be preserved

# Project Team

*User Agencies:* Massachusetts State Police and Department of Conservation and Recreation

*Capital Project Management:* Division of Capital Asset Management and Maintenance

*Designer:* Finegold Alexander + Associates, Inc.; selected by Designer Selection Board

*Construction Manager:* to be selected by DCAMM and user agencies

# Anticipated Project Timeframe\*

*Designer selection:* June 2014

*Project start-up:* July-August 2014

*Study phase:* Anticipated completion by summer 2015

*Project certification:* Late-Summer 2015

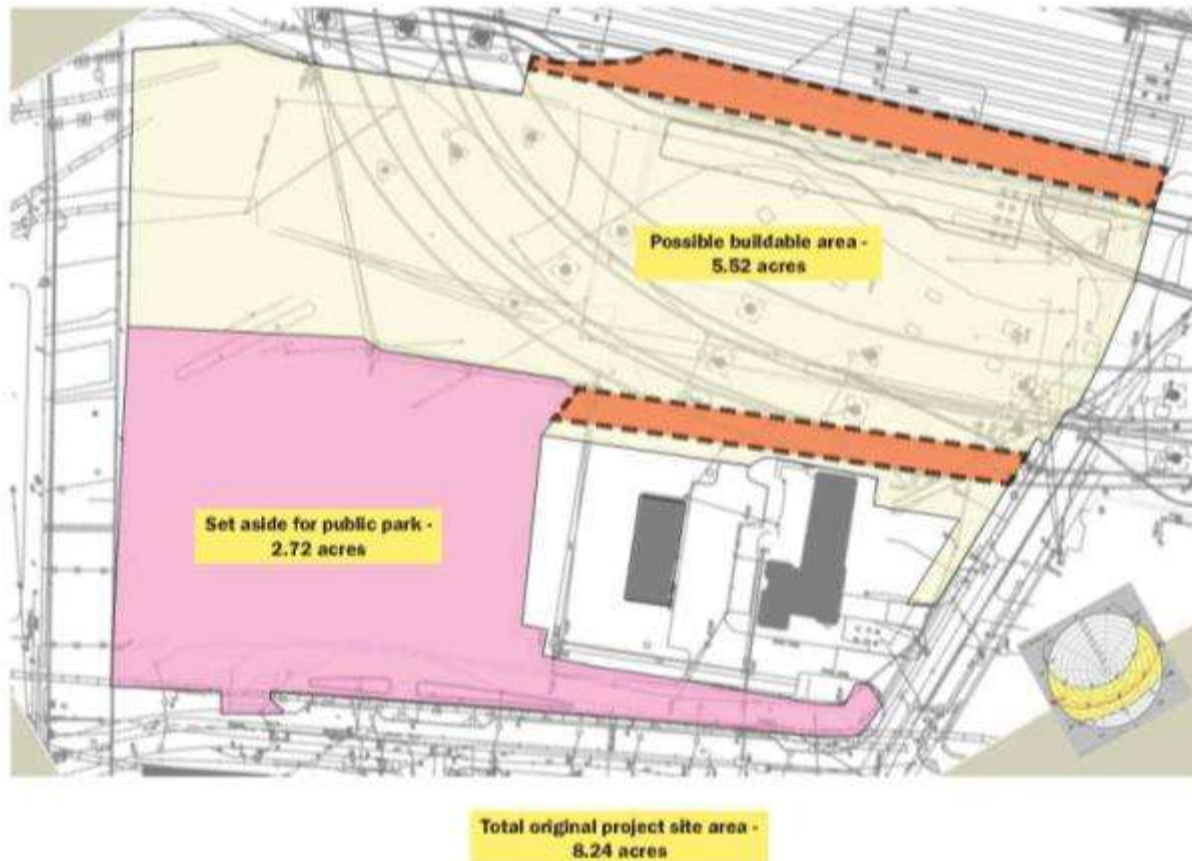
*Design phase:* Fall 2015-Fall 2016

*Construction phase:* Fall 2016-Fall 2018

\*All dates and schedules are estimates



## North Point Maintenance Facility



## Leverett Circle Pedestrian Bridge Boston, Massachusetts

R+P

**Type:** Curved Concrete Bridge  
**Services:** Conceptual Design and Architectural Visualizations  
**Cost:** \$3.7 Million (projected construction cost)  
**Completion Date:** 2015

**Client:** MassDOT  
 10 Park Plaza  
 Boston, MA 02116  
 Amy Getchell, Project Manager

The new pedestrian bridge over Leverett Circle in Boston next to the Museum of Science will be a concrete circular bridge supported by slender Y-shaped steel columns. This bridge is contemporary and streamlined in appearance, with spans varying from 120' (36.5m) to 100' (30.5m). The bridge appears to be suspended over the busy interchange and connects directly to the Green Line train station. The simplicity and understatement of the bridge allows for uninterrupted views of the Charles River and adjacent historic buildings.



37 Newbury Street, 6th Floor, Boston, MA 02116

1.617.247.7499

1.617.247.7139

[info@rosalespartners.com](mailto:info@rosalespartners.com)

[www.rosalespartners.com](http://www.rosalespartners.com)

