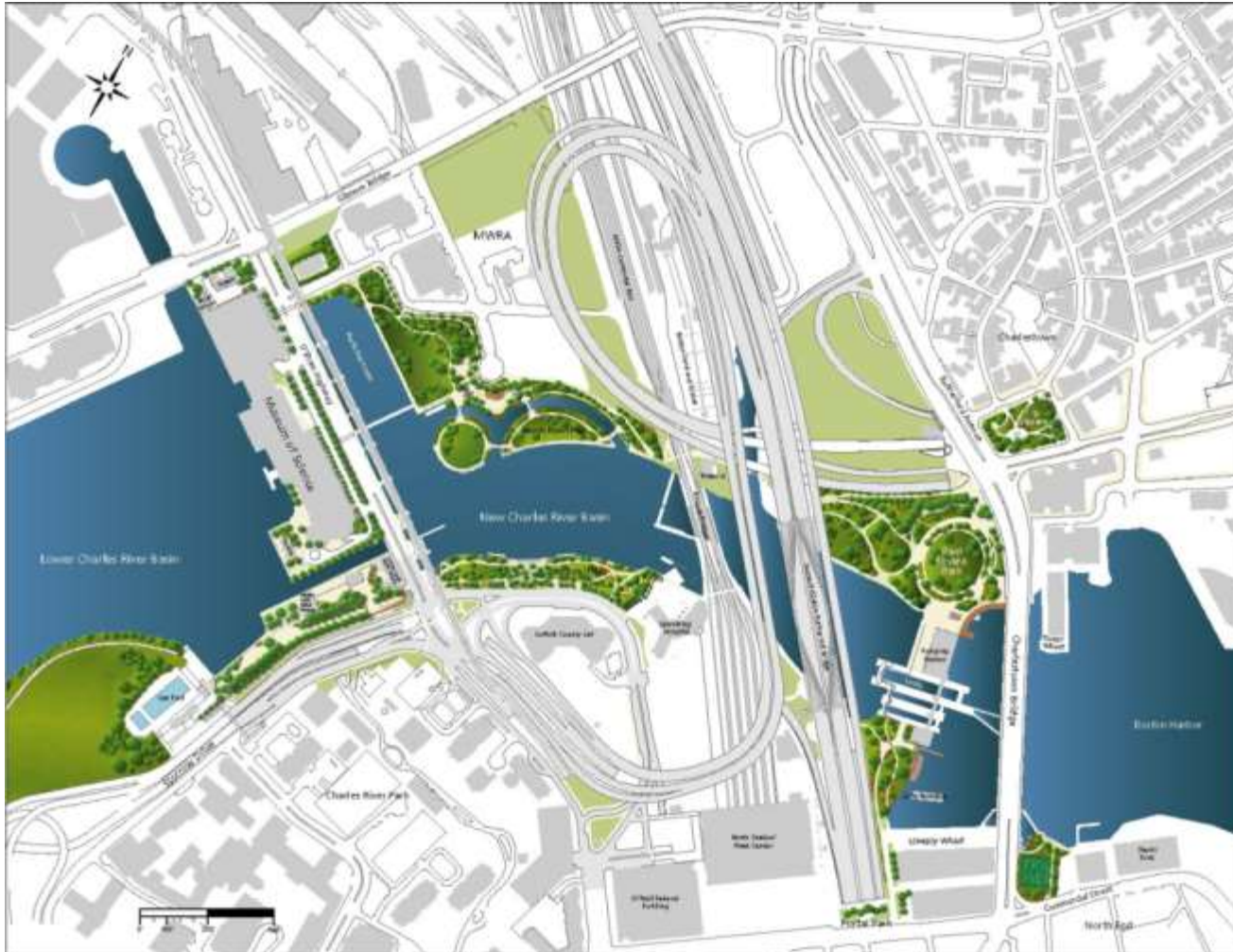
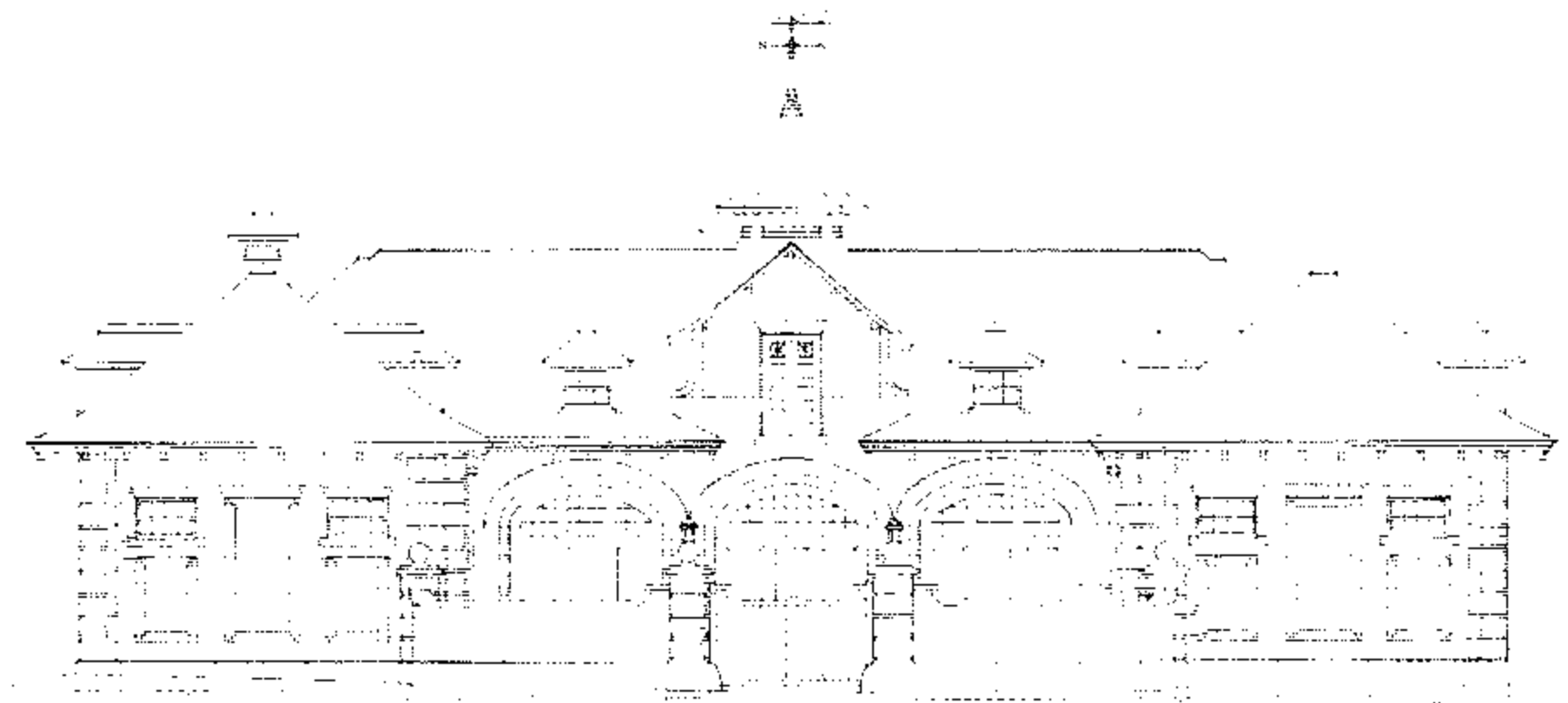


## New Charles River Basin



New Charles River Basin Citizens Advisory Committee, December 7, 2015



Stable, June 2014



New Charles River Basin Citizens Advisory Committee, December 7, 2015

Stable, January 2015



New Charles River Basin Citizens Advisory Committee, December 7, 2015



## Stable, 2013

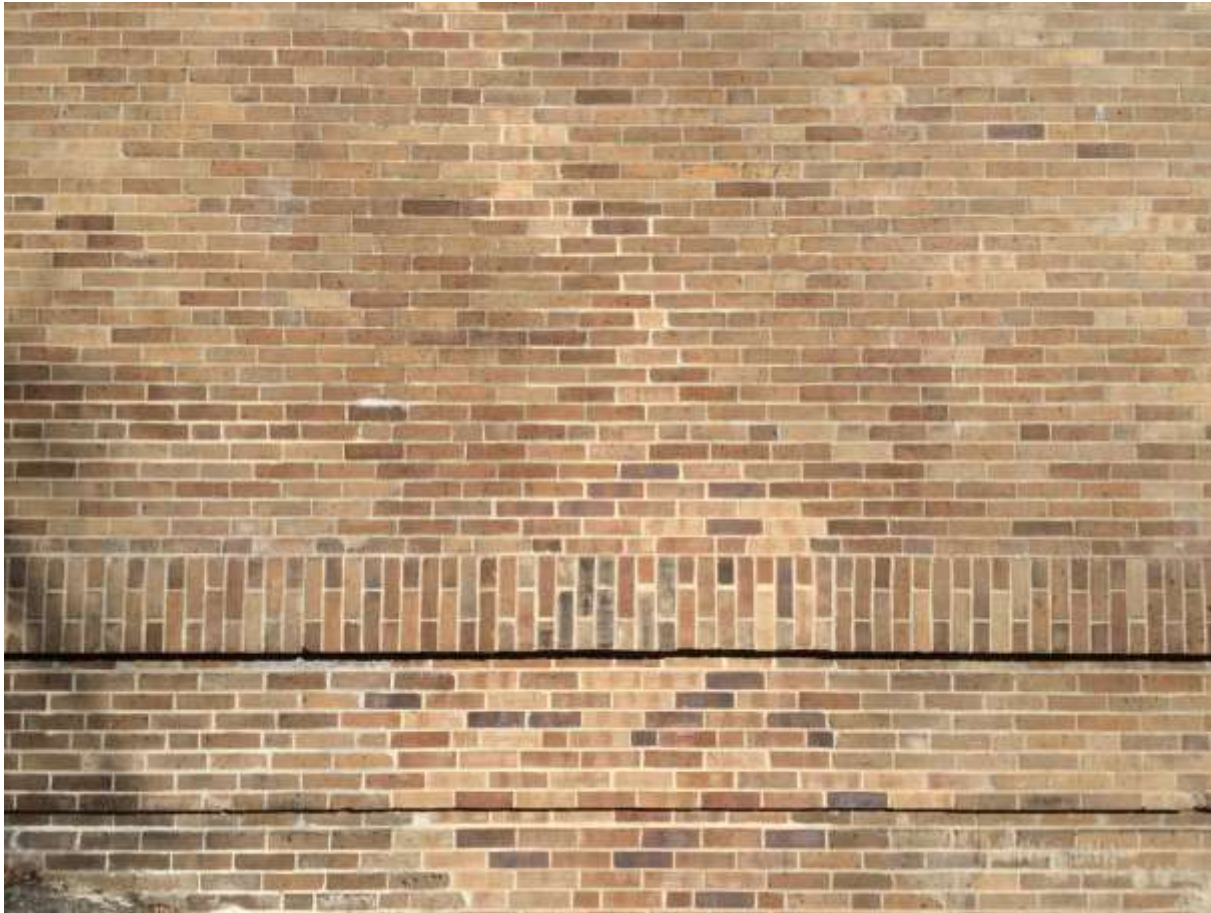


## Stable, 2013





## Stable, 2015



New Charles River Basin Citizens Advisory Committee, December 7, 2015

## Lovejoy Wharf, February 2013



New Charles River Basin Citizens Advisory Committee, December 7, 2015

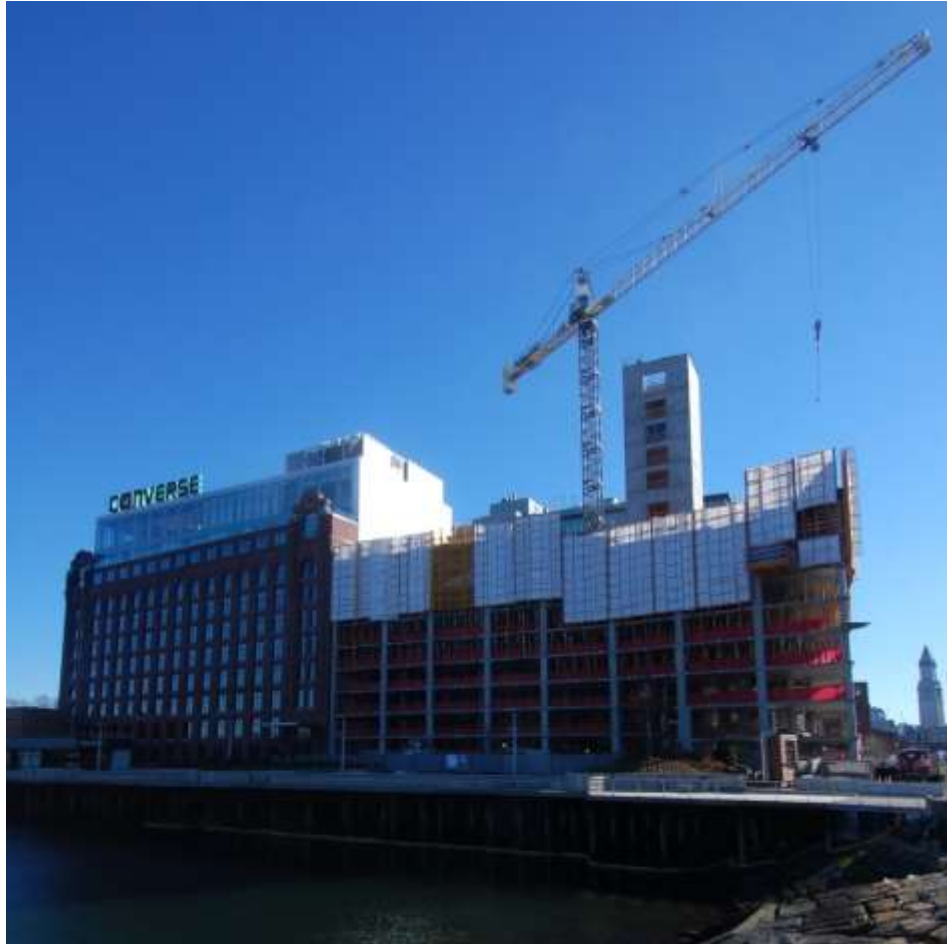


## Lovejoy Wharf, January 2015



New Charles River Basin Citizens Advisory Committee, December 7, 2015

## Lovejoy Wharf, December 2015



New Charles River Basin Citizens Advisory Committee, December 7, 2015

## Lovejoy Wharf, December 2015



New Charles River Basin Citizens Advisory Committee, December 7, 2015



## Lovejoy Wharf, December 2015



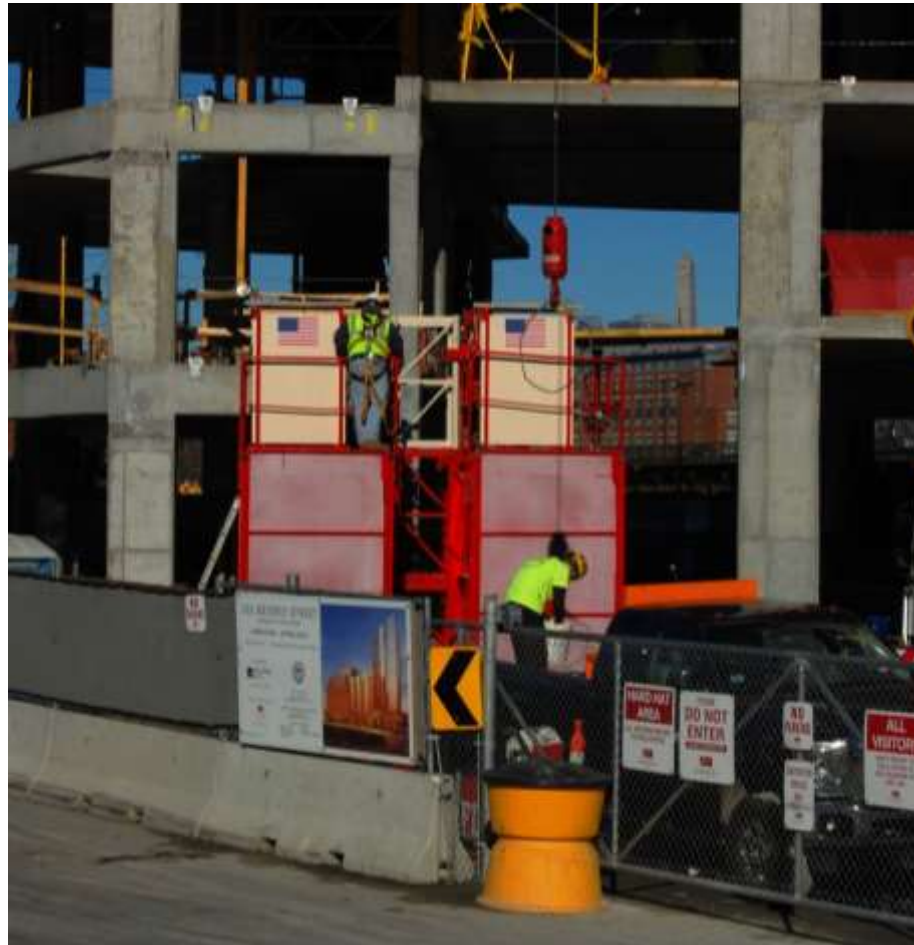
New Charles River Basin Citizens Advisory Committee, December 7, 2015

## 131 Beverly Street, December 2015



New Charles River Basin Citizens Advisory Committee, December 7, 2015

## 131 Beverly Street, December 2015



New Charles River Basin Citizens Advisory Committee, December 7, 2015



## Lynch Family Skate Park



New Charles River Basin Citizens Advisory Committee, December 7, 2015

## Lynch Family Skate Park









New Charles River Basin Citizens Advisory Committee, December 7, 2015

## Mitigation Background

- Mitigation for the Big Dig Charles River crossing included \$99.1 million for park improvements in the Charles River Basin.
- The \$30.5 million remaining balance from that amount has been transferred to DCR under an executed ISA to complete five projects
- MassDOT completed the North Bank Bridge and associated landscaping in 2012 through the American Recovery and Reinvestment Act of 2009
- The Lovejoy Wharf walkway has been completed by the developer of 160 North Washington Street
- The Lynch Family Skate Park has been completed by the Charles River Conservancy and opened on November 14, 2015

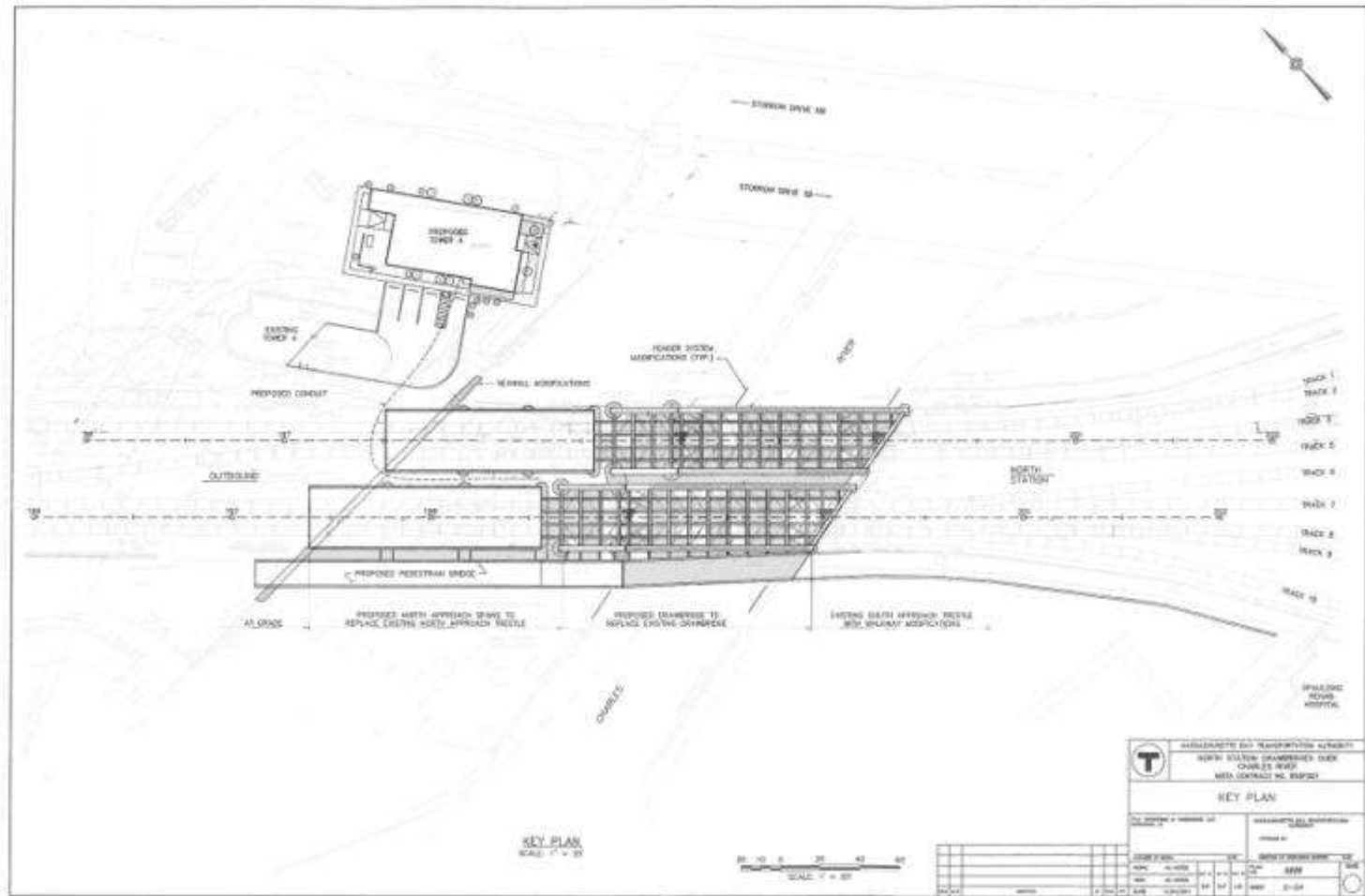
# MassDOT and other New Basin Projects

**If sufficient funding remains after the required mitigation measures are completed, some of these projects may be funded**

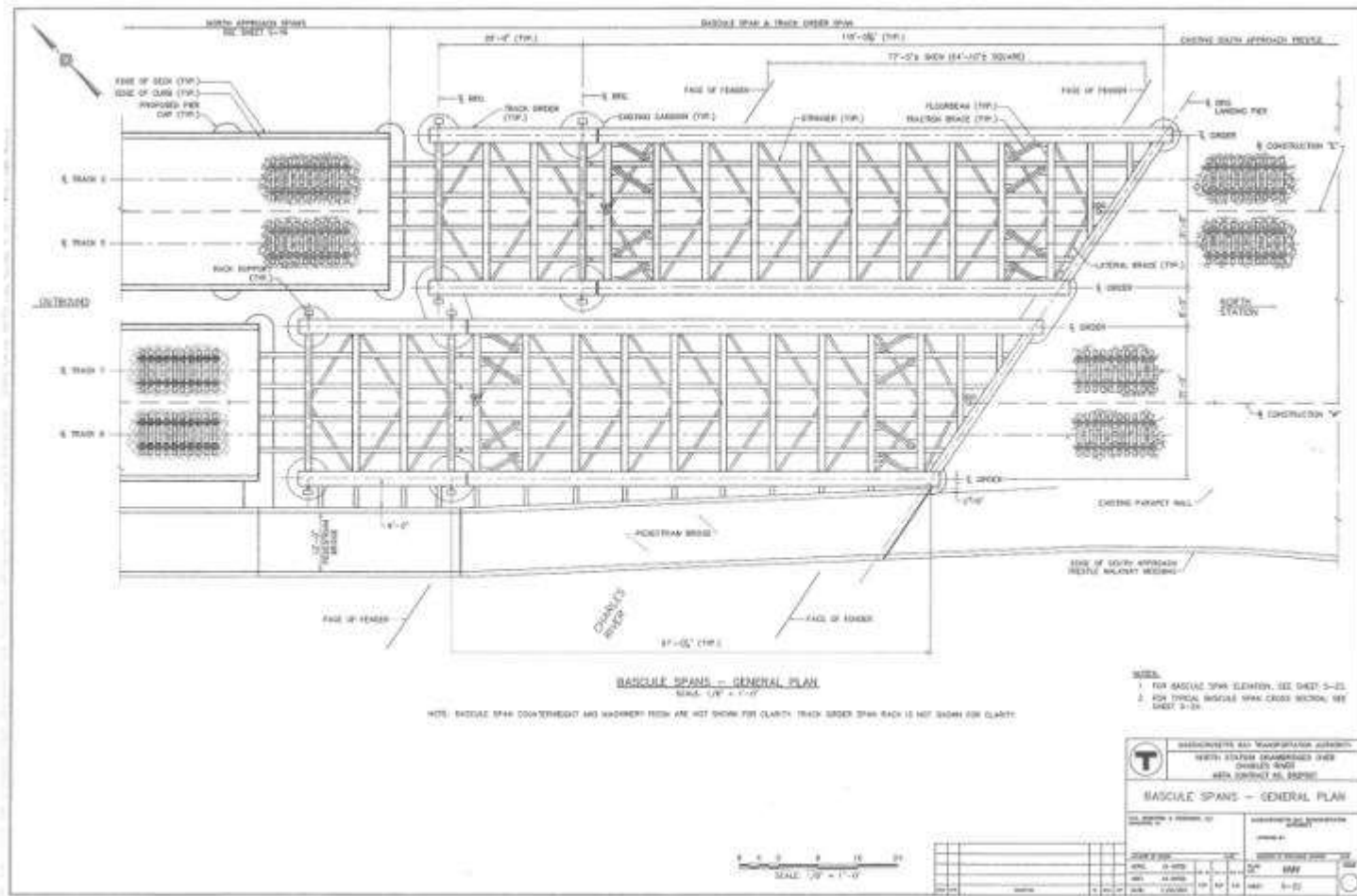
	Current Status	FY 2016	FY 2017	FY 2018	FY 2019
North Bank Bridge	COMPLETED				
North Point Skate Park	COMPLETED	Design complete MassDOT funded obligation			
EF Education II	COMPLETED				
Lovejoy Wharf Walkway	<i>COMPLETED</i>				
South Bank Park (was part of North Bank Bridge contract)	Conceptual design complete				
Leverett Circle pedestrian bridge	MassDOT designer selected				
North Point Inlet Pedestrian Bridge	MassDOT/ Cambridge MOA				
EF Education III	EF EDUCATION				



## Drawbridge Walkway



## Drawbridge Walkway



Stable, June 2014



New Charles River Basin Citizens Advisory Committee, December 7, 2015







New Charles River Basin Citizens Advisory Committee, December 7, 2015

## Upper Lock Gate House



New Charles River Basin Citizens Advisory Committee, December 7, 2015



## South Bank Bridge



New Charles River Basin Citizens Advisory Committee, December 7, 2015

**LOWER BASIN BARRACKS  
MODERNIZATION**  
Massachusetts State Police

**Project Overview**



# Project Purpose

- Massachusetts State Police require an upgraded barracks at current location to address public safety in the Charles River Lower Basin and patrol transportation infrastructure
- Current facility is in poor condition, undersized and dysfunctional
- Permanent presence of MassDOT drawbridge operator will be maintained
- Public access and recreation uses will be preserved



# Project Team

*User Agencies:* Massachusetts State Police and Department of Conservation and Recreation

*Capital Project Management:* Division of Capital Asset Management and Maintenance

*Designer:* Finegold Alexander + Associates, Inc.; selected by Designer Selection Board

*Construction Manager:* to be selected by DCAMM and user agencies

# Anticipated Project Timeframe\*

*Designer selection:* June 2014

*Project start-up:* July-August 2014

*Study phase:* Anticipated completion by summer 2015

*Project certification:* Late-Summer 2015

*Design phase:* Fall 2015-Fall 2016

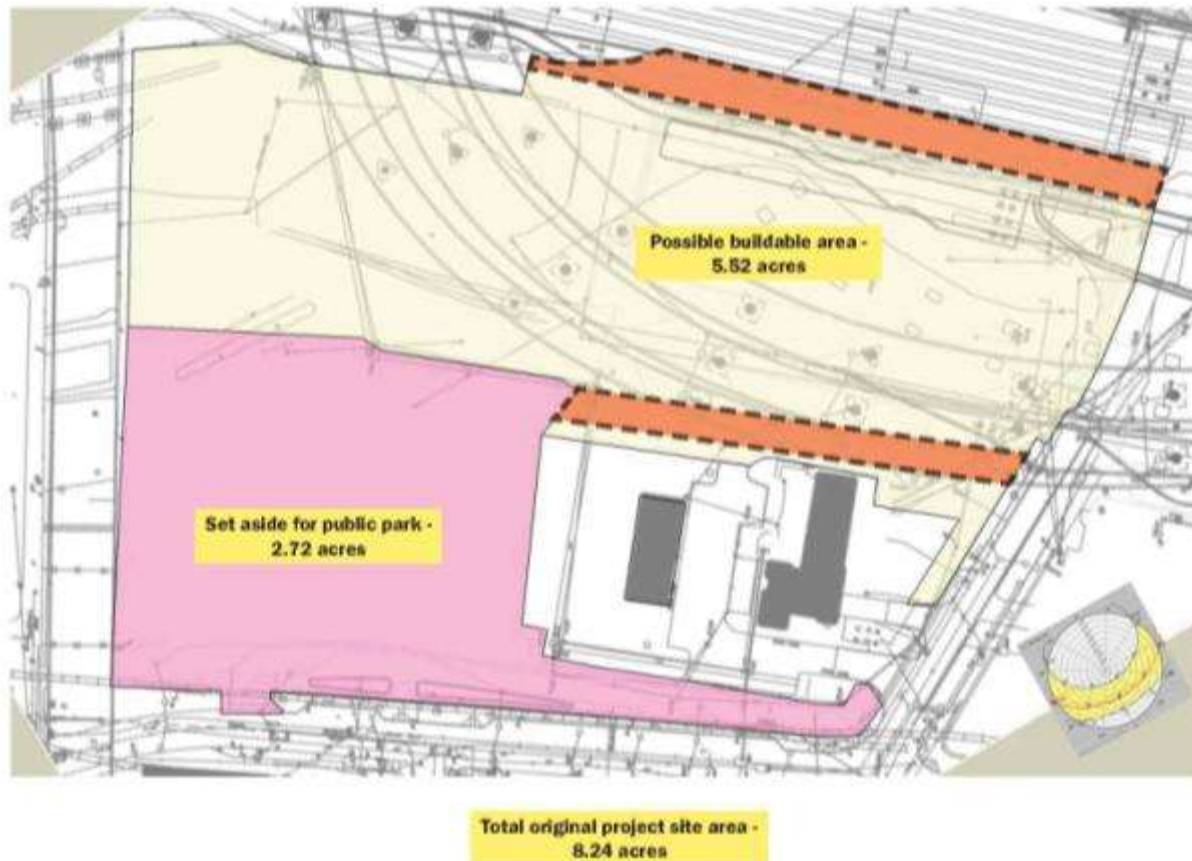
*Construction phase:* Fall 2016-Fall 2018

\*All dates and schedules are estimates

# DCR Mitigation Measures Status and Schedule

Mitigation Measure	Current Status	FY 2015	FY 2016	FY 2017	FY 2018
<b>Stockpile Remediation</b>	Phasing, estimates complete	6/30/15 Update study following EF III review			\$3,200,000
<b>Maintenance facility</b>	Temporary facility completed Study 100%	6/30/15 Update study following EF III review			\$2,700,000
<b>Historic Dam Restoration</b>					
Stable	Complete				
Lower Lock Gate House	DCAMM consultant selected		9/1/15 Study completed	9/30/16 Construction start	6/30/18 Construction 75%
Upper Lock Gate House		4/30/15 Design start	3/30/16 Design 100%	6/30/17 Construction 100%	
Boat House		4/30/15 Design start	3/30/16 Design 100%	6/30/17 Construction 100%	
					\$6,200,000
<b>Draw bridge Walkway</b>	Design 60%	Complete capacity study			\$3,250,000
<b>South Bank Bridge</b>	Under design	3/31/15 Design 25%	3/31/16 Design 100%		12/31/17 Construction 100%
					\$14,900,000
					\$30,250,000

## North Point Maintenance Facility





## Leverett Circle Pedestrian Bridge Boston, Massachusetts

R+P

**Type:** Curved Concrete Bridge  
**Services:** Conceptual Design and Architectural Visualizations  
**Cost:** \$3.7 Million (projected construction cost)  
**Completion Date:** 2015

**Client:** MassDOT  
 10 Park Plaza  
 Boston, MA 02116  
 Amy Getchell, Project Manager

The new pedestrian bridge over Leverett Circle in Boston next to the Museum of Science will be a concrete circular bridge supported by slender Y-shaped steel columns. This bridge is contemporary and streamlined in appearance, with spans varying from 120' (36.5m) to 100' (30.5m). The bridge appears to be suspended over the busy interchange and connects directly to the Green Line train station. The simplicity and understatement of the bridge allows for uninterrupted views of the Charles River and adjacent historic buildings.



37 Newbury Street, 6th Floor, Boston, MA 02116

1.617.247.7499

1.617.247.7139

[info@rosalespartners.com](mailto:info@rosalespartners.com)

[www.rosalespartners.com](http://www.rosalespartners.com)

