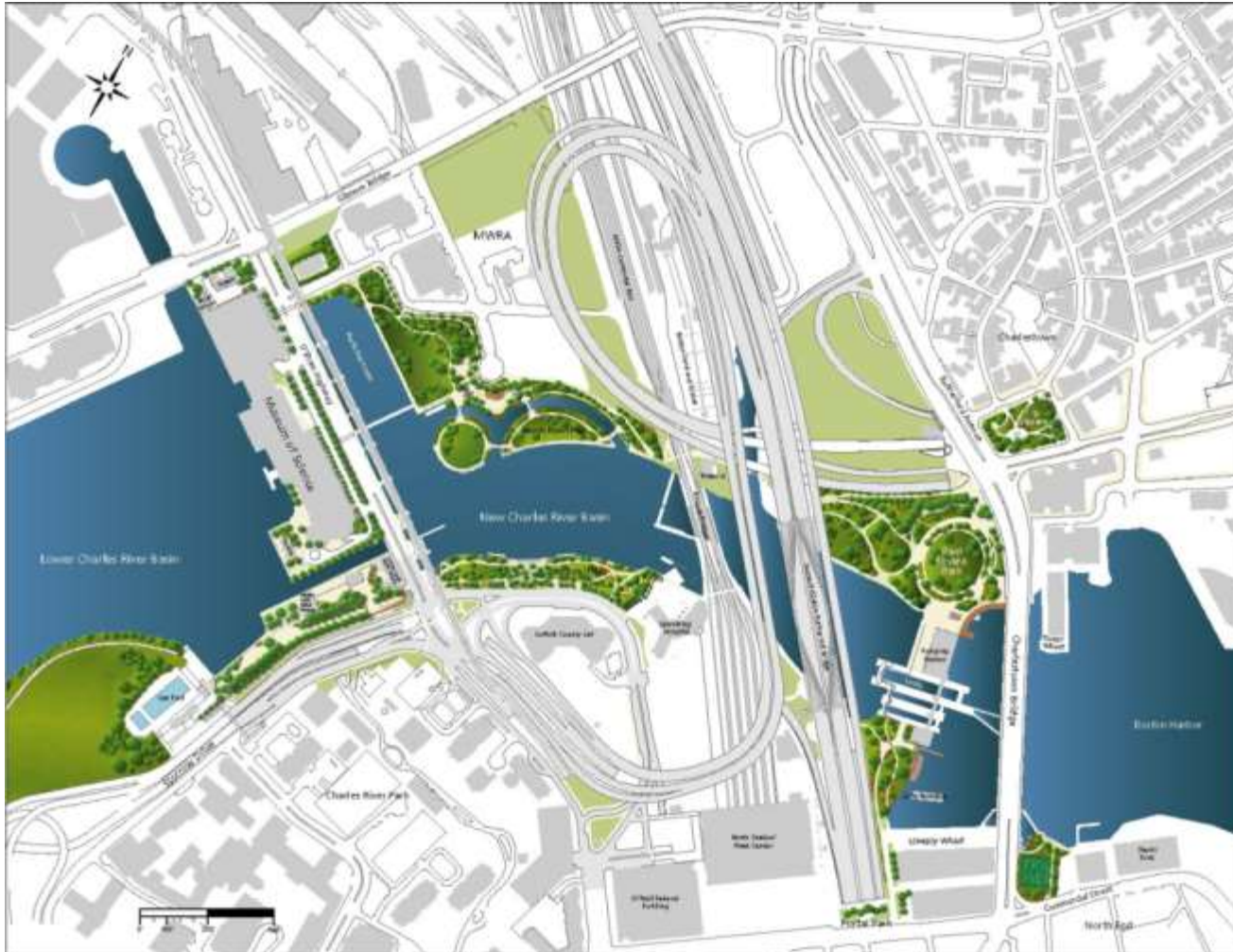


New Charles River Basin



New Charles River Basin Citizens Advisory Committee, February 19, 2019

North Washington Street Bridge



North Washington Street Bridge



New Charles River Basin Citizens Advisory Committee, February 19, 2019

North Washington Street Bridge

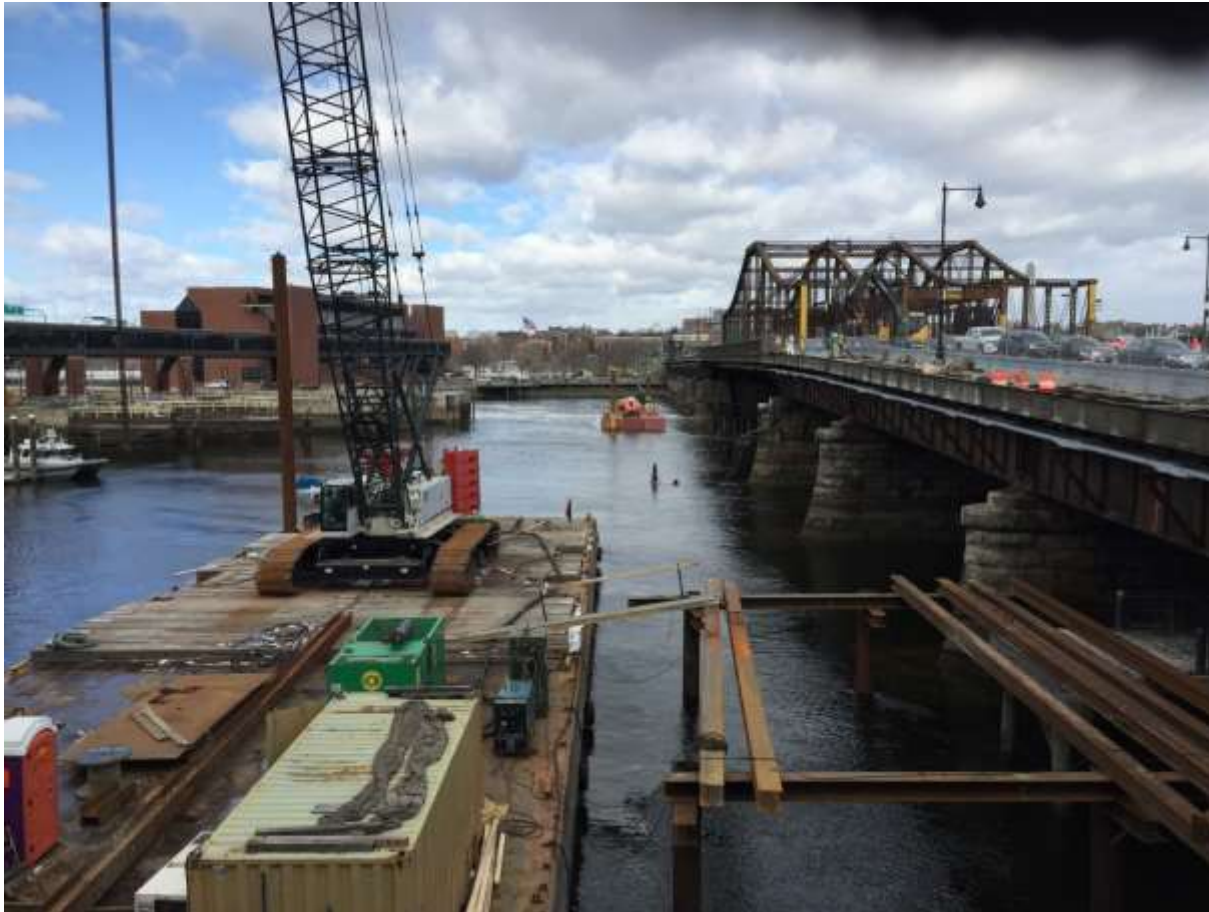


Lovejoy Wharf, January 2019



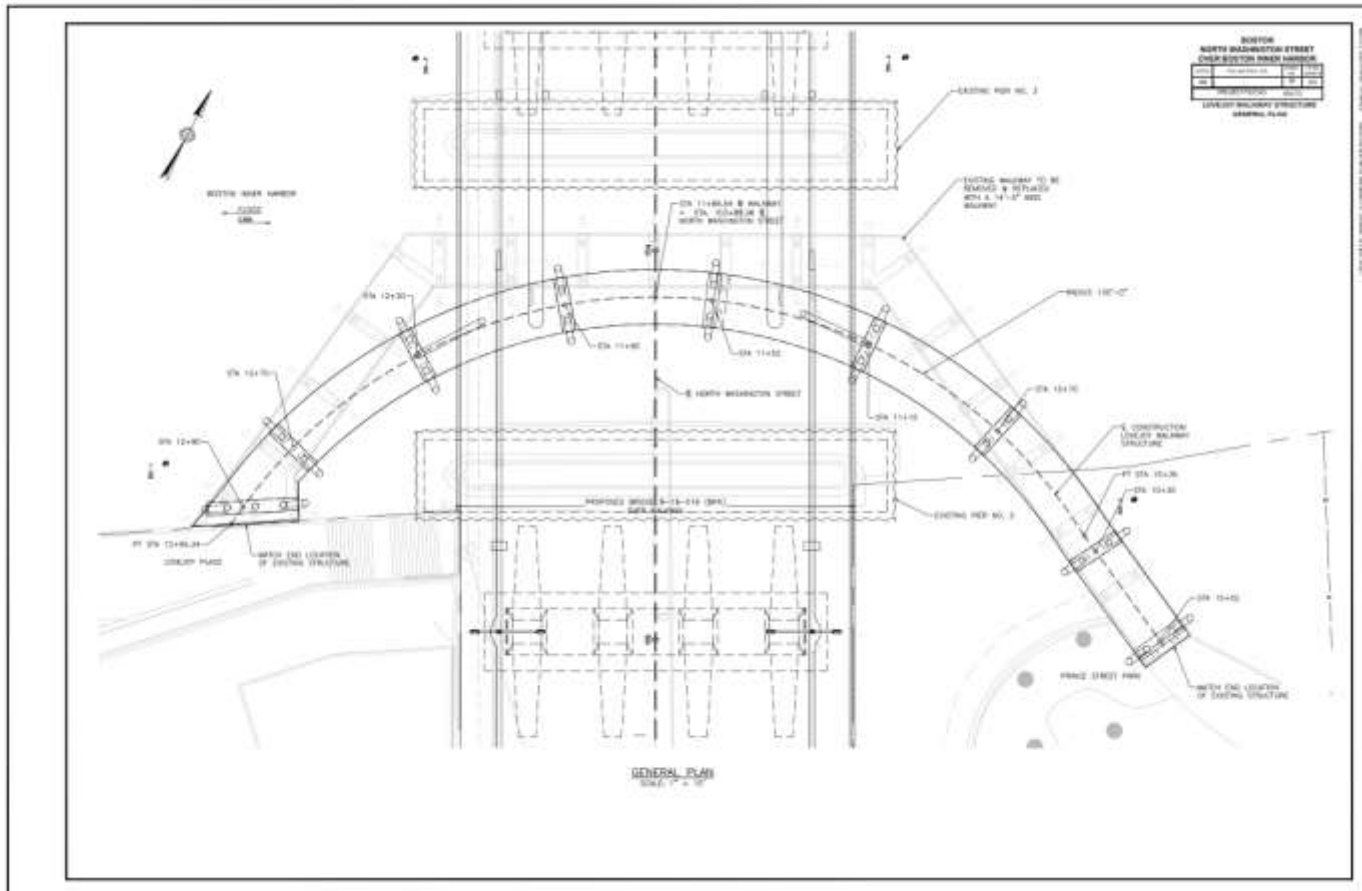
New Charles River Basin Citizens Advisory Committee, February 19, 2019

Lovejoy Wharf, February 2019



New Charles River Basin Citizens Advisory Committee, February 19, 2019

Lovejoy Wharf Walkway



Mitigation Background

- Mitigation for the Big Dig Charles River Crossing included \$99.1 million for park improvements in the Charles River Basin.
- The \$30.5 million remaining balance from that amount has been transferred to DCR under an executed ISA to complete five projects
- MassDOT completed the North Bank Bridge and associated landscaping in 2012 through the American Recovery and Reinvestment Act of 2009
- The Lovejoy Wharf walkway has been completed by the developer of 160 North Washington Street
- The Lynch Family Skate Park has been completed by the Charles River Conservancy and opened on November 14, 2015

DCR Mitigation Measures Status and Schedule

Mitigation Measure	Current Status	FY 2019	FY 2020	FY 2021	FY 2022	
Stockpile Remediation	Completed					\$3,200,000
Maintenance facility	Permanent facility Under construction		Completed			\$2,700,000
Historic Dam Restoration						
Stable	Completed					
Lower Lock Gate House						
Upper Lock Gate House	DCAMM study completed	6/30/19 Design	6/30/20 Construction 100%			
Boat House		6/30/19 Design		12/31/20 Construction 100%		\$5,200,000
Draw One Walkway	Designer selected					\$3,250,000
South Bank Bridge	50% design	75% design complete	Design 100%	Construction 50%	Construction 100%	\$15,900,000
						\$30,250,000

Lower and Upper Lock Gate Houses, International Boat Day, 1911



New Charles River Basin Citizens Advisory Committee, February 19, 2019

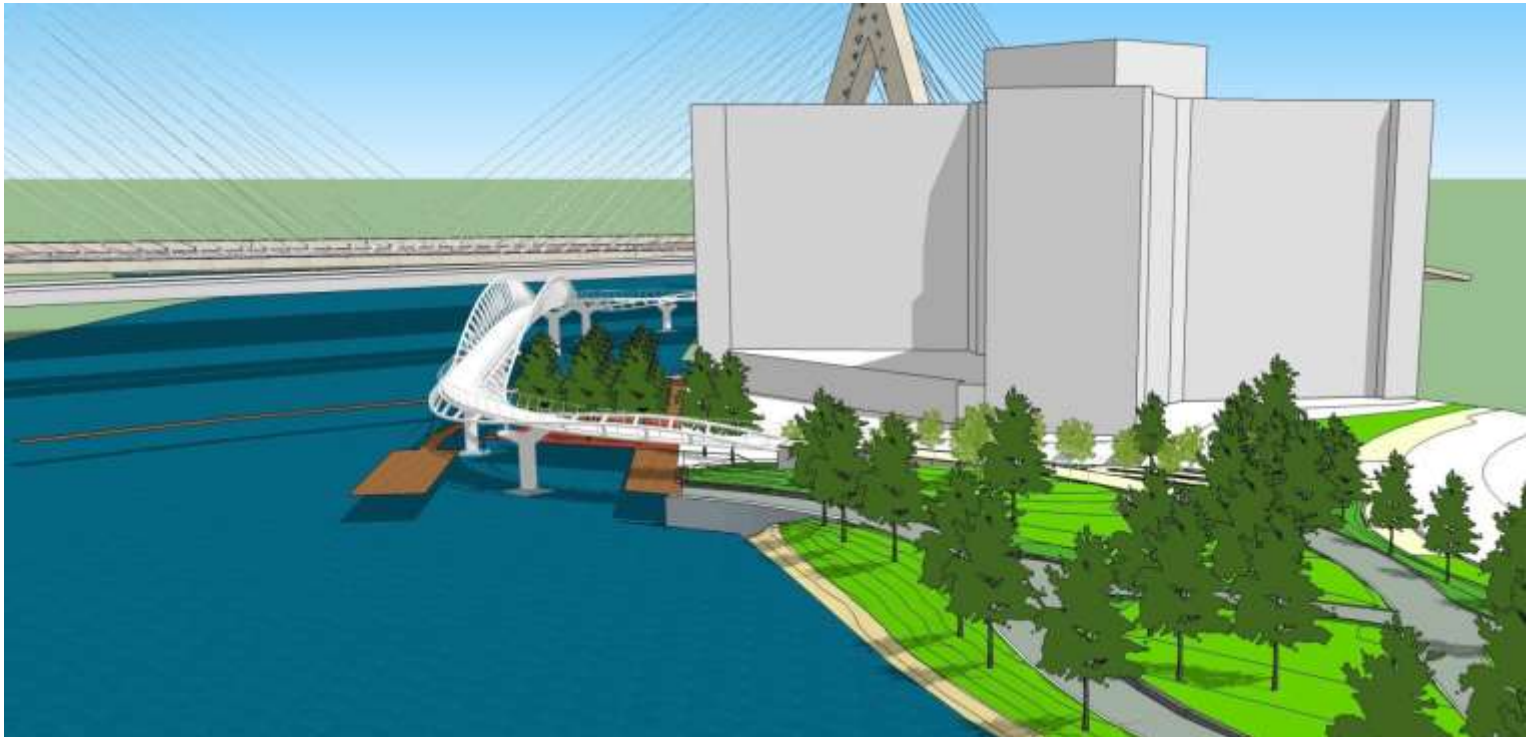
Stable and Boat House, 1920



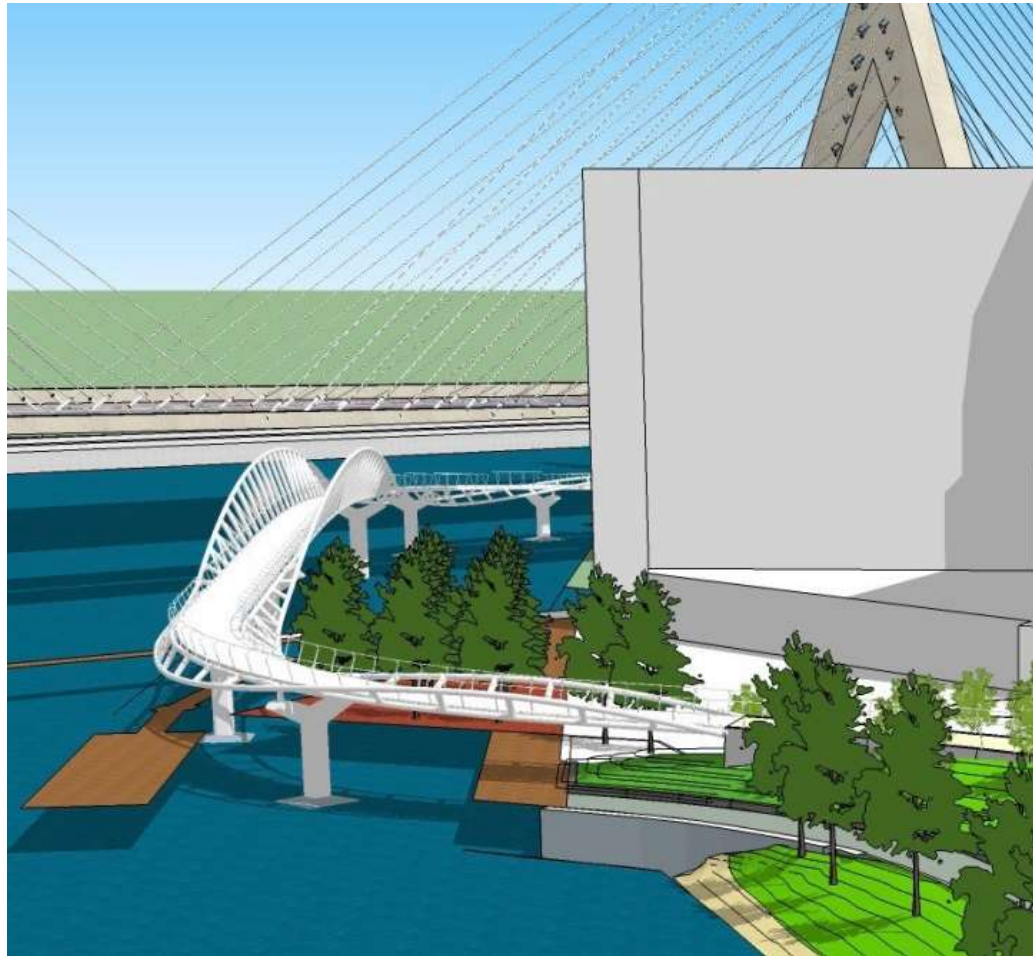


New Charles River Basin Citizens Advisory Committee, February 19, 2019

South Bank Bridge



South Bank Bridge



New Charles River Basin Citizens Advisory Committee, February 19, 2019

South Bank Bridge



South Bank Bridge



South Bank Bridge



View from the Nashua Street Pier, looking west

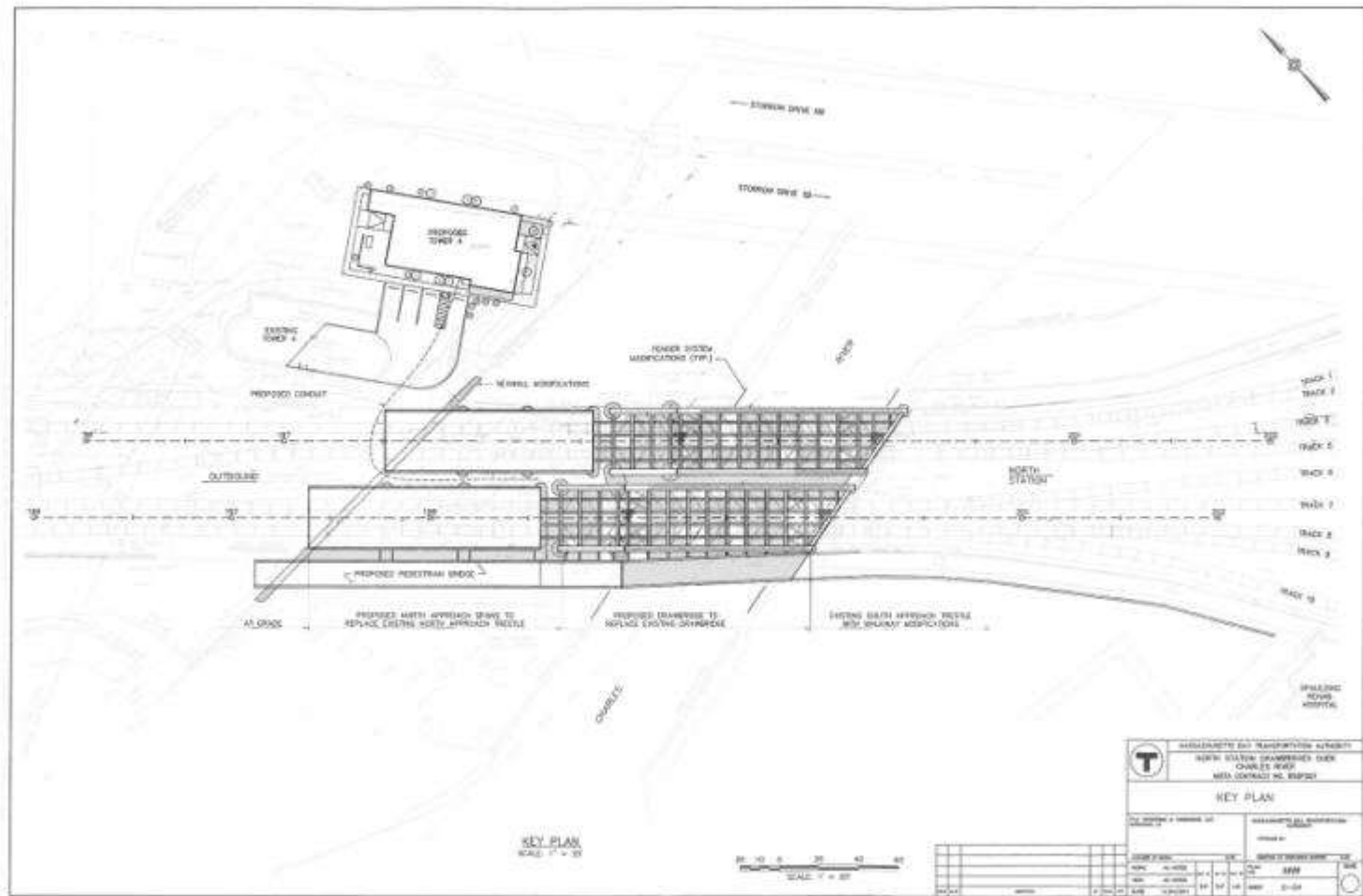
Alignment 016d

South Bank Bridge, Option B

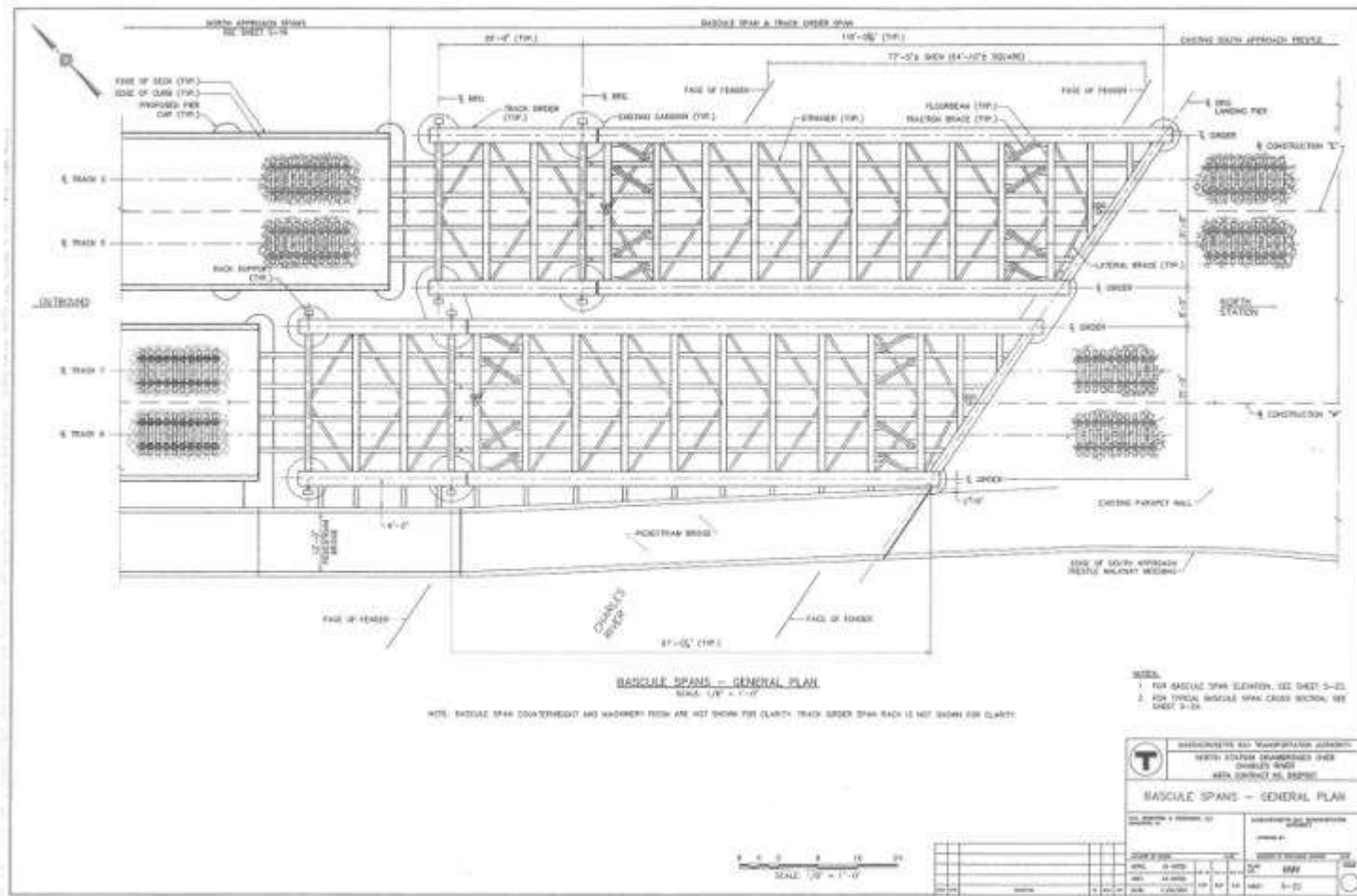




Drawbridge Walkway

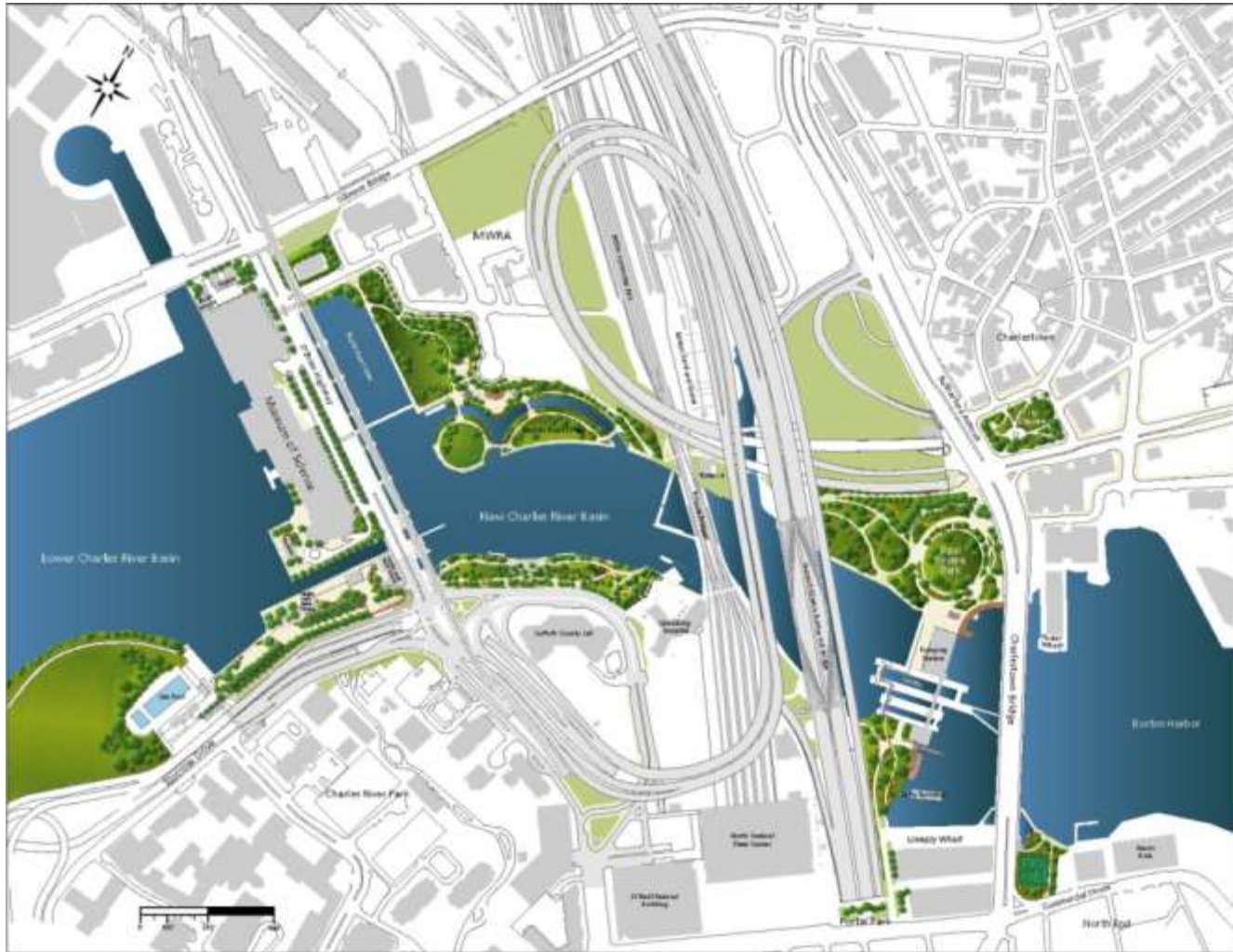


Drawbridge Walkway



Other New Charles River Basin Projects

	Current Status	FY 2019	FY 2020	FY 2021	FY 2024
North Bank Bridge	COMPLETED 2012				
EF Education II	COMPLETED 2014				
North Point Skate Park	COMPLETED 2015				
Lovejoy Wharf	COMPLETED 2016				
EF Education III, IV	Under construction				
North Washington Street Bridge (Lovejoy Walkway)	Conceptual design complete	25% Design			Construction complete Lovejoy Wharf Walkway replaced



Additional Information

For more information: <https://www.mass.gov/service-details/new-charles-river-basin-projects>

If you would like to be added to an email list to receive general or project-related DCR announcements or if you have questions or concerns, please contact mass.parks@state.ma.us or 617-626-4973.