



# Results from Working Group Meeting 1

## *Goal and Objective Rankings and Mapping Exercise*

Results from May 22, 2024 Meeting

Comments and suggestions noted in this document were collected from the Working Group members during the first meeting





## Goals and Objectives Ranking Exercise Results:

- 1. Improve Access, Safety, and Mobility for All**
- 2. Develop Actionable Recommendations**
- 3. Reconnect Newton's Neighborhoods**
- 4. Promote Sustainable Transportation Solutions**
- 5. Enhance Quality of Life**



# Local Study Area: Most Common Themes

**Traffic calming, safety, and improvement of infrastructure for pedestrians, bicyclists, and people with disabilities**

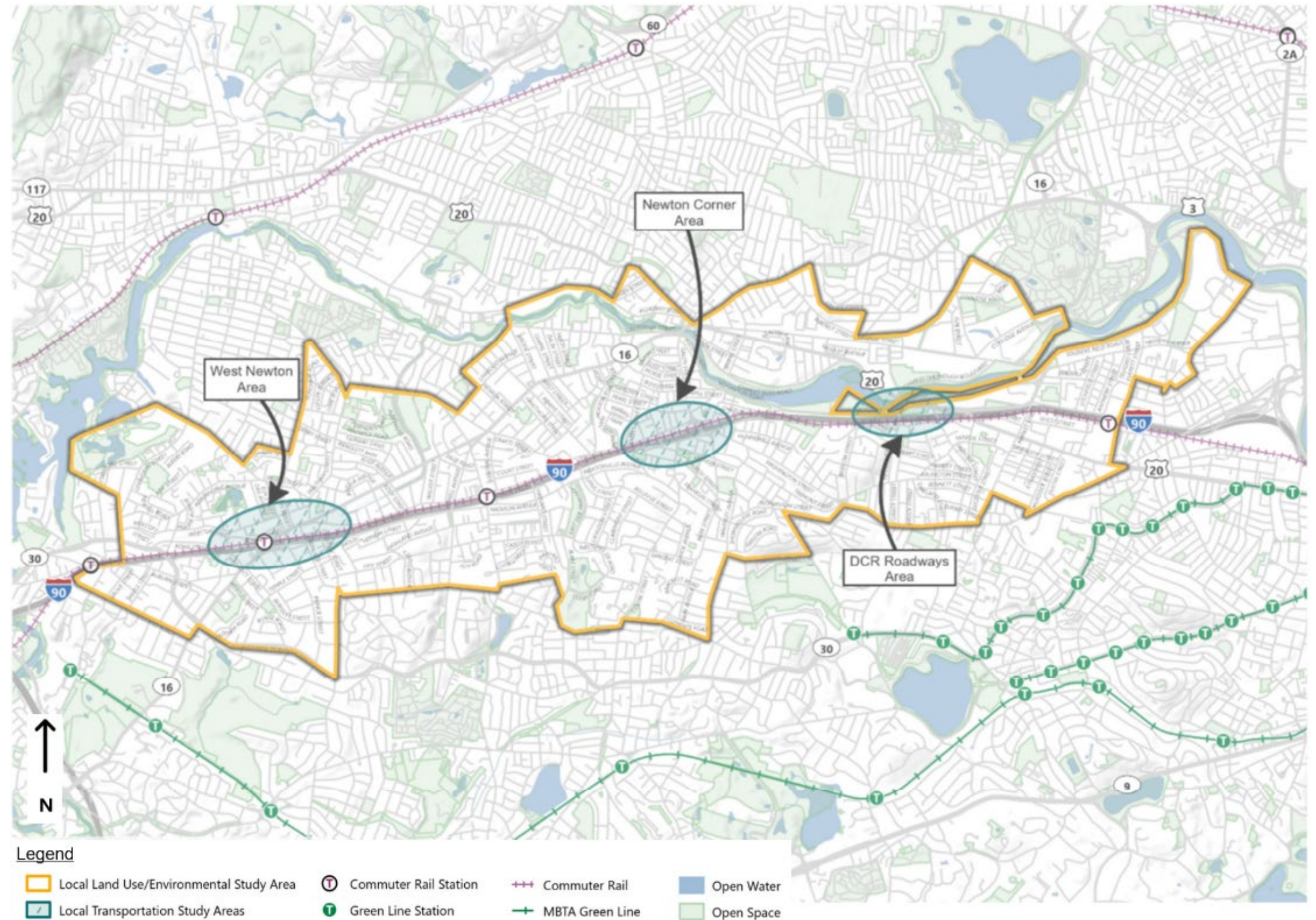
Ensure safe and unobstructed routes, consider vulnerable users, and establish new connections.

**Opportunities to improve transit**

Consider new rail stations, bus stops, and improve the transit connection to neighboring areas.

**Collaborate and coordinate with local and state interests and projects**

Align with State initiatives and connect with local improvements.



Note: At this time, it is not this study's place to make policy recommendations (e.g., rail stations), but will note these types of opportunities.



# Local Study Area: Challenges and Opportunities for Improvement

## Charles River Greenway

Improve pinch point in front of Watertown Square Apartments, add section of two-way bikeway between Chapel St and Bridge St.

## West Newton Area

- Improve connections to the downtown area
- Improve ped/bike access
- Lack of I-90 EB exit
- Modify tolls to discourage congestion

## Newton Corner Area

- Safety and congestion
- Lack of ped/bike connectivity
- Opportunity to improve transit between Watertown and Greenline

Nonantum Rd. at Maple St.  
Improve Ped/bike crossing

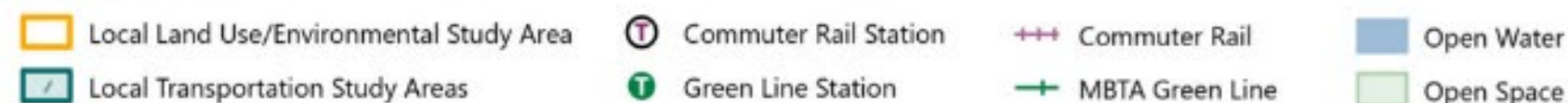
## Washington St. between West Newton and Newton Corner

- Washington St. functions as a frontage road, it should be a complete street.
- Desire for bike lanes, road diet, interest in TIP project

## DCR Roadways Area

- DCR Area/Brighton: underutilized pavement width
- Underutilized green space
- As much continuous mixed-use path along river as possible with as many connections as possible
- N. Beacon St. EB to Soldiers Field Rd. needs to be safer
- Consider I-90 interchange

### Legend



# Local Study Area: Challenges and Opportunities for Improvement

Groups and projects mentioned to coordinate with:

- **City of Watertown** – regarding Watertown Square Improvements and Galen St.
- **Watertown TMA** – for potential for increased shuttle service
- **I-90 Allston Project** – changes in traffic patterns may impact the study area
- **128/90 Interchange Planning**
- **MassDOT** – to align with Beyond Mobility Draft Plan
- **MBTA** – to align with Mode Shift Goals and Bus Network Redesign, and preserve, modernize, and expand access to rail and bus stops.
- **Newton Economic Development of Newton Corner** – to consider impact of plans for new housing

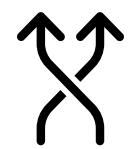


# Newton Corner Area: Most Common Challenges Identified



## Inadequate ped/bike infrastructure

Concerns for the safety and accessibility for children, people with disabilities, transit users, and bikers.



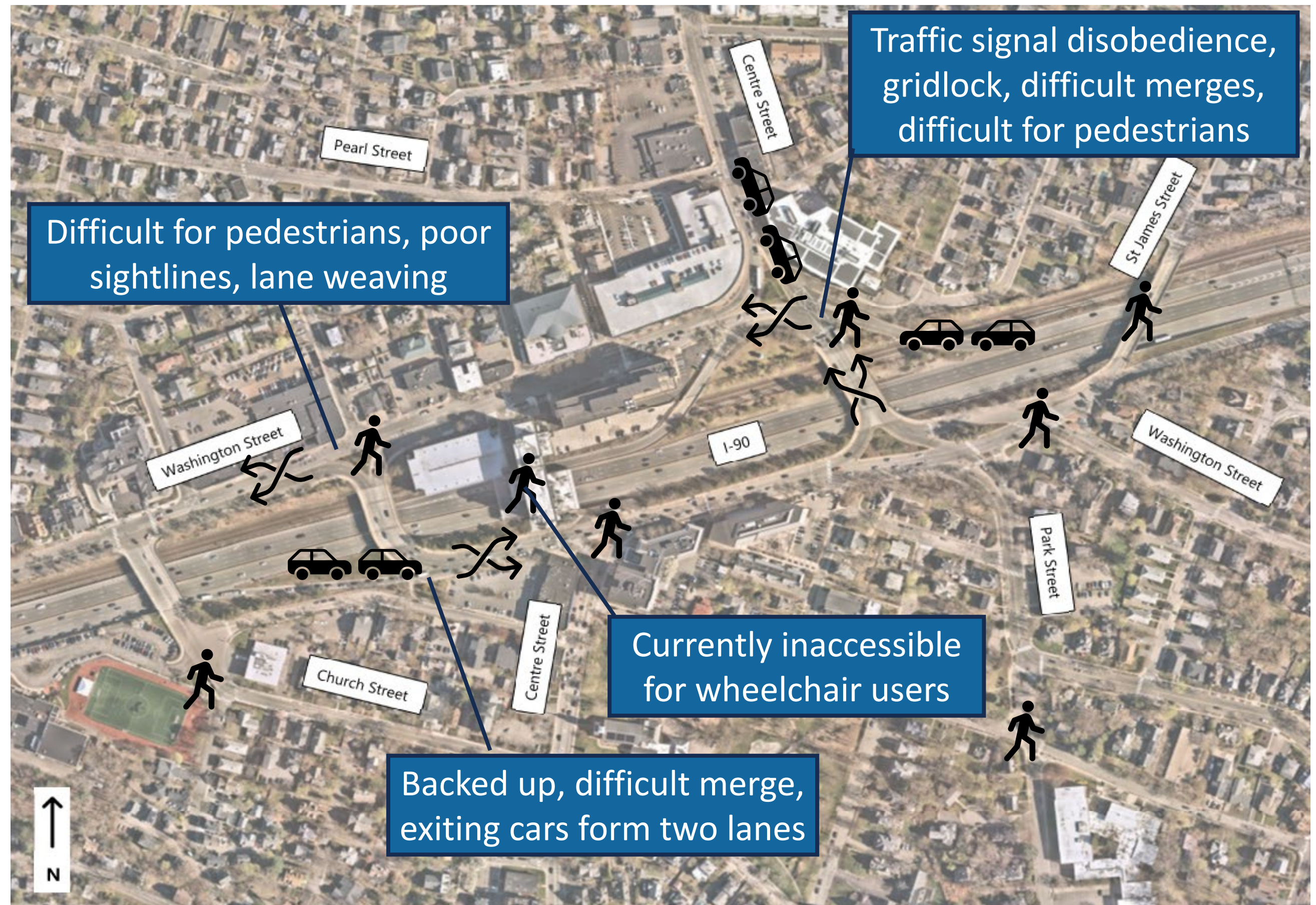
## Merge conflicts

Areas with confusing geometry that require difficult maneuvers.



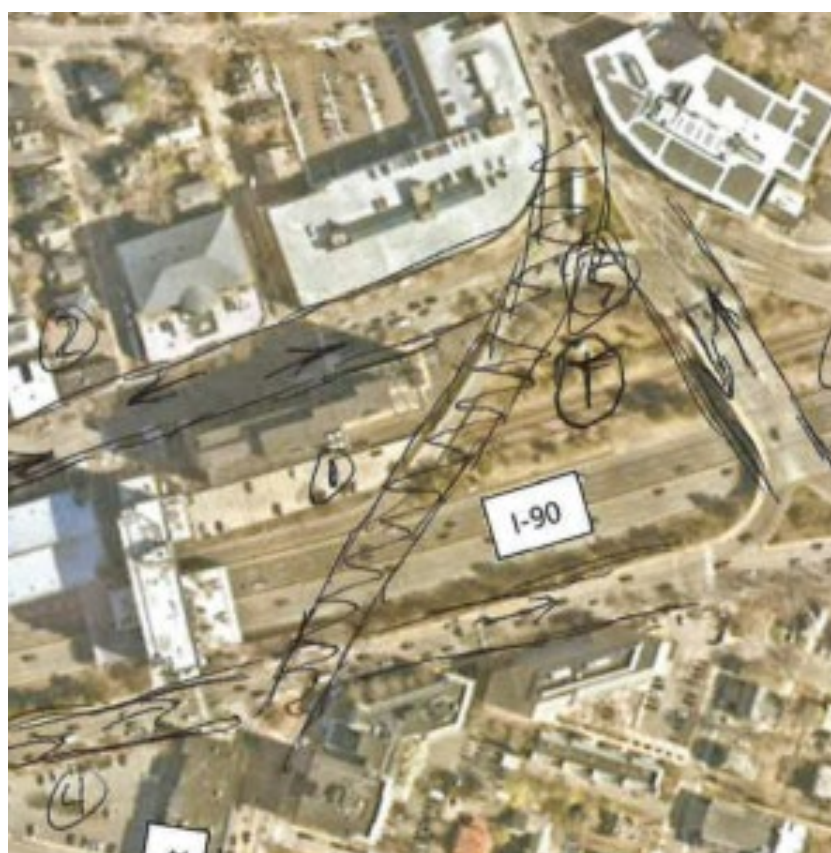
## Backups

Congestion, gridlock, and ramps backing up onto the mainline.





# Newton Corner Area: Opportunities for Improvement



Marked up map from Working  
Group Meeting #1

### Improve pedestrian safety and accessibility:

- Implement traffic calming measures in areas where there is aggressive driving, speeding, or high volumes of children crossing
- Improve accessibility for people with disabilities
- Improve ped/bike crossings and access to mixed-use paths
- Implement No Turn On Red (NTOR) prohibitions
- Establish new multimodal North/South connections, consider:
  - A bridge or decking over I-90
  - Ped/bike access improvements on the St James Street Bridge

## Improve Transit Access

- Add bus lanes and transit signal priority
- Improve access to bus stops for pedestrians
- Consider locations for new infill stations and bus stops

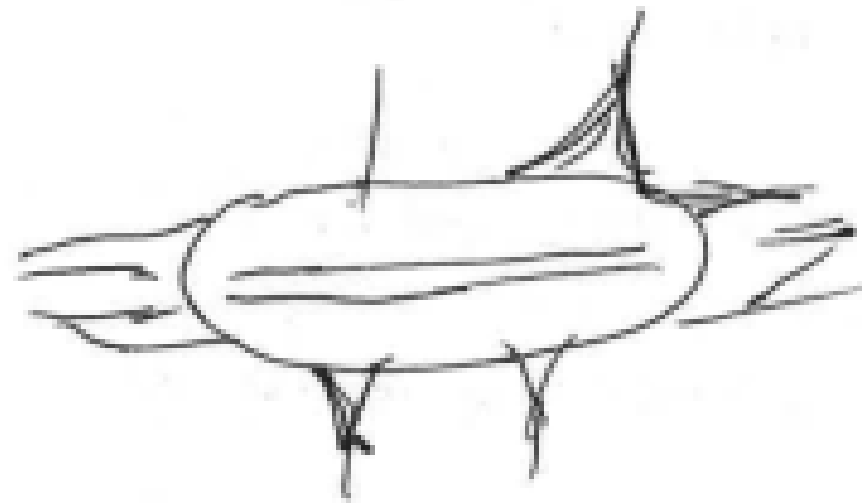


Marked up map from Working Group Meeting #1

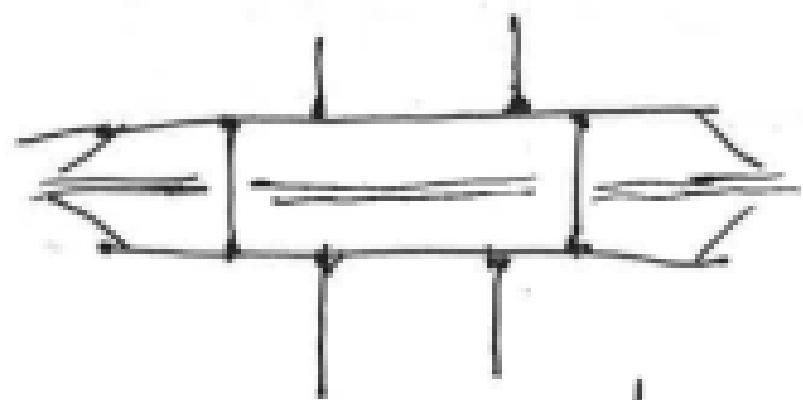


# Newton Corner Area: Opportunities for Improvement

Hwy → street configuration



before



after

- ✓ safer, slower speeds
- ✓ space gained for public use



## Simplify confusing intersections and reduce congestion:

- Remove highway geometry and large radii in favor of right-angle intersections with smaller radii
- Or improve function as an interchange and separate ped/bike traffic
- Close unnecessary access to driveways and side streets
- Simplify intersections with complex geometry
- Reconfigure lanes to reduce the need for lane-shifting
- Re-establish bi-directional travel
- Remove/relocate on-ramp
- Consider roundabout