

MassDOT Highway Construction

**Contract No. 131997– Corridor Improvements on Route 114, Between
Waverly Road and Willow/Mill Street in North Andover, MA**

December 3, 2025

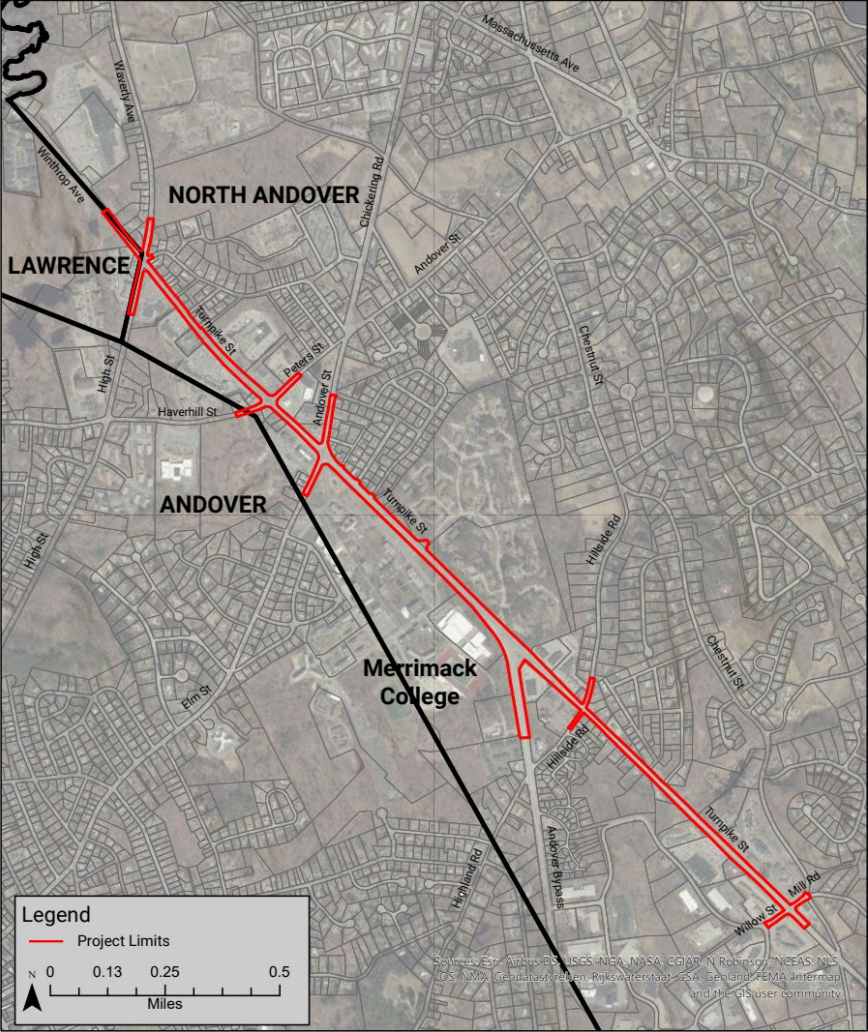


Table of Contents

- 3. Overview
- 5. Project Scope
- 6. Construction Management Approach
- 7. Procurement & Budget
- 8. Questions from Capital Programs Committee
- 9. Request of the Board

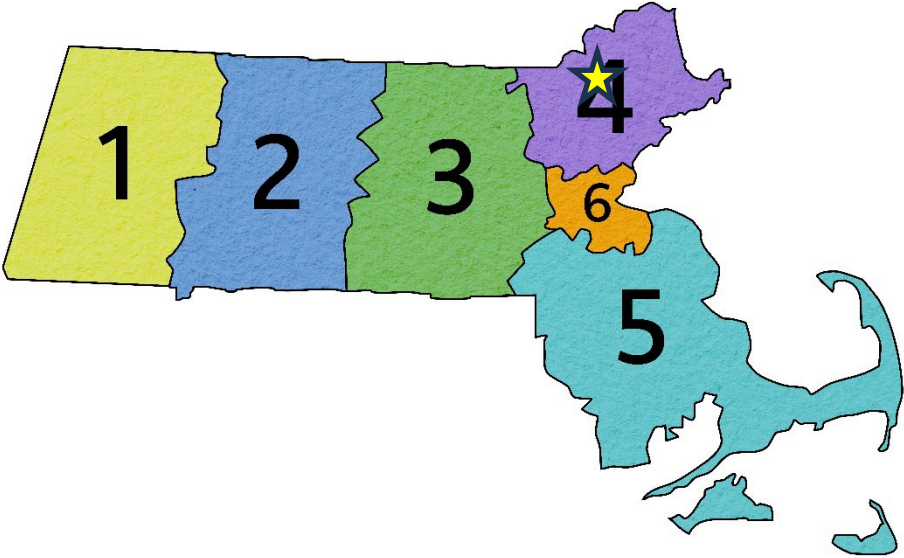
Overview

Project Location



Locus map

massDOT Highway Districts



★ District Project Location

Overview

Beyond Mobility Highlights

4

- This project consists of corridor improvements on Route 114 and was initiated through a Merrimack Valley Planning Study that identified several high crash locations and traffic congestion.
- The design promotes **Safety** for all users through work on nine intersection locations with new traffic signals.
- Project Investment meets Beyond Mobility priorities for **Reliability**, **Travel experience**, and **Destination Connectivity**.
- This project supports **Clean Transportation** through the construction of a shared use path for the length of the project to improve bicycle and pedestrian accommodations and new sidewalks.



Project Scope

5

- Full depth construction, pavement milling and paving
- New cement concrete sidewalks and pedestrian curb ramps
- Hot mix asphalt shared use path
- Stormwater management improvements
- Utility relocations
- New traffic signing and pavement markings
- Landscaping
- New traffic signal system at one intersection and reconstructed traffic signals at eight other locations



Construction Management Approach

Outreach, Permitting and Duration

6

Public Outreach:

- Public Information Meeting #1, 12/10/2018
- Public Information Meeting #2, 4/11/2019
- Select Board Meeting, 3/8/2021
- Planning Board Meeting, 5/18/2021
- 25% Design Public Hearing, 10/28/2021
- ENF Public Information Meeting, 3/23/2023
- MEPA Remote Consultation Session, 8/8/2023
- MEPA Public Information Meeting, 12/7/2023
- Presentation to Merrimack Students, 4/1/2025

Permits on the project include:

- NEPA – Individual CE/Categorical Exclusion
- Notice of Intent (NOI) w/ Order of Conditions
- DEP 401 Water Quality Certificate
- ACOE 404 PCN permit
- Environmental Notification Form, ENF
- MEPA – Single EIR
- RDA

Construction Duration:

- The Construction Contract Duration is 4.9 years from the Notice to Proceed

In general, the Contractor shall work between the hours of 7:00 AM to 3:30 PM.

Procurement and Budget

7

- Project Advertised August 16, 2025
- Engineer's Estimate was \$49,974,111.50
- Bid Opening held October 15, 2025
- 9 bids were received:

J H Lynch & Sons Inc	\$47,800,373.90
D W White Construction Inc	\$48,616,803.66
P Gioioso & Sons Inc	\$50,522,805.00
Albanese D & S, Inc	\$52,736,761.25
McCourt Construction Co Inc	\$52,887,460.70
Barletta Heavy Division Inc	\$55,175,000.00
Baltazar Contractors Inc	\$55,287,706.00
The Middlesex Corporation	\$56,997,755.00
Mackay Construction Services Inc	\$59,893,518.25

Line Item	Budget
Bid Amount	\$47,800,373.90
Contingencies	\$4,780,037.39
Construction Engineering (5%)	\$2,390,018.69
Traffic Police	\$2,000,000
Trainees	\$4,000
Total	\$56,974,429.98

Project is funded with federal aid in the FY26-FY30 STIP using regional and statewide funds as follows:

- NHPP/National Highway Performance Program
- HSIP/Highway Safety Improvement Program
- STBG/Surface Transportation Block Grant

Non-Federal Aid funds (20% Match)

Questions from Capital Programs Committee

8

Q1. Lowest bidder is \$2M under the engineer's estimate but the other bidders are significantly higher. Are you concerned about change orders?

A1. MassDOT field personnel from our District 4 Office in Arlington will be on-site to manage the construction, the quantities and payments for the project duration. If unforeseen conditions require change orders or extra work, our on-site staff will tabulate and track the necessary work in advance of authorizing it.

Additional slides added to Appendix show sample cross sections, intersections details, pedestrian, bicyclist and transit benefits to address questions from CPC.

Request of the MassDOT Board of Directors

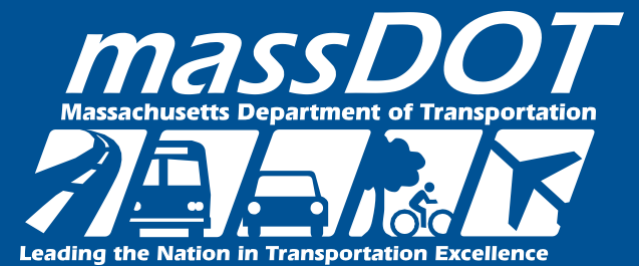
9

The Price Proposals were reviewed by engineers in Construction, Construction Contracts, Project Management, and the Design Consultant; costs were found to be reasonable and recommended to be awarded to the apparent low bidder.

Request of the MassDOT Board

Staff request that MassDOT Board of Directors authorize the Secretary of the Massachusetts Department of Transportation, or their designee, to award and execute MassDOT Construction Contract 131997– North Andover –Corridor Improvements on Rte 114, Between Waverly Road and Willow/Mill Street, with **J H Lynch & Sons Inc**, for the amount of **\$47,800,373.90**.

Thank You



Appendix

Project Overview

Proposed Cross Section and Roadway Details

12

Proposed Section

5-Lane Section



Existing 5-Lane Section



Project Overview

Proposed Intersection Details for Route 114 at Waverly Road

13



Project Overview

Proposed Intersection Details for Route 114 at Andover Bypass

14



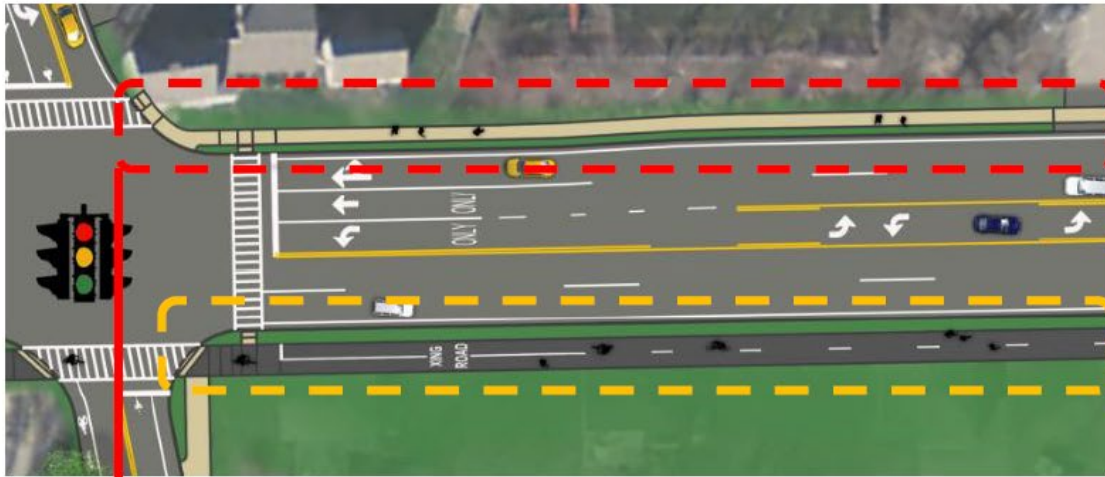
Highlights

- Realigned intersection configuration & removal of jug handle
- Revised Royal Crest access
- Signalized dual right turn on Rt 114 eastbound
- Additional left turn lane on Rt 114 westbound
- Rt 114 shared use path, south side
- Rt 114 sidewalk, north side
- Buffered bicycle lanes along Andover Bypass

Project Overview

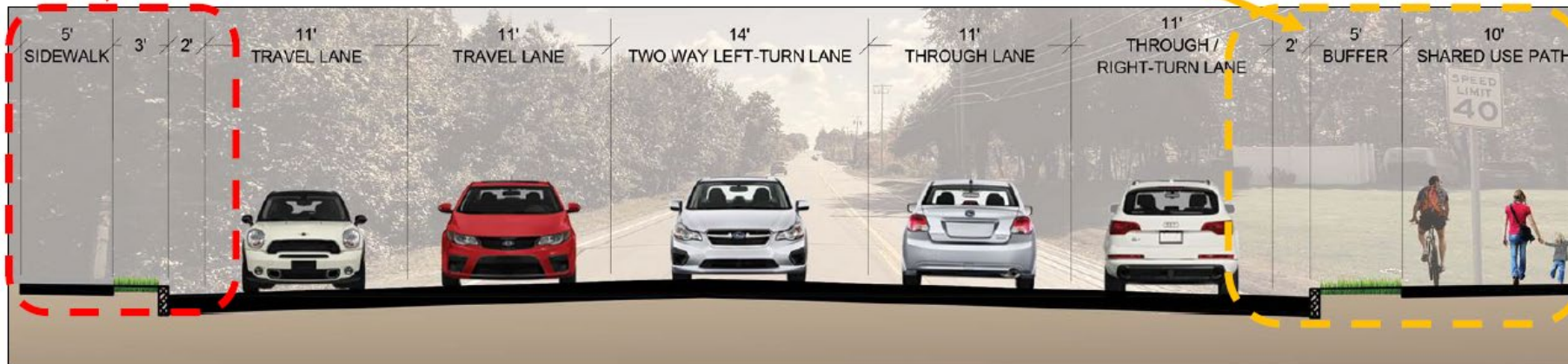
Pedestrian benefits

15



Pedestrian Benefits

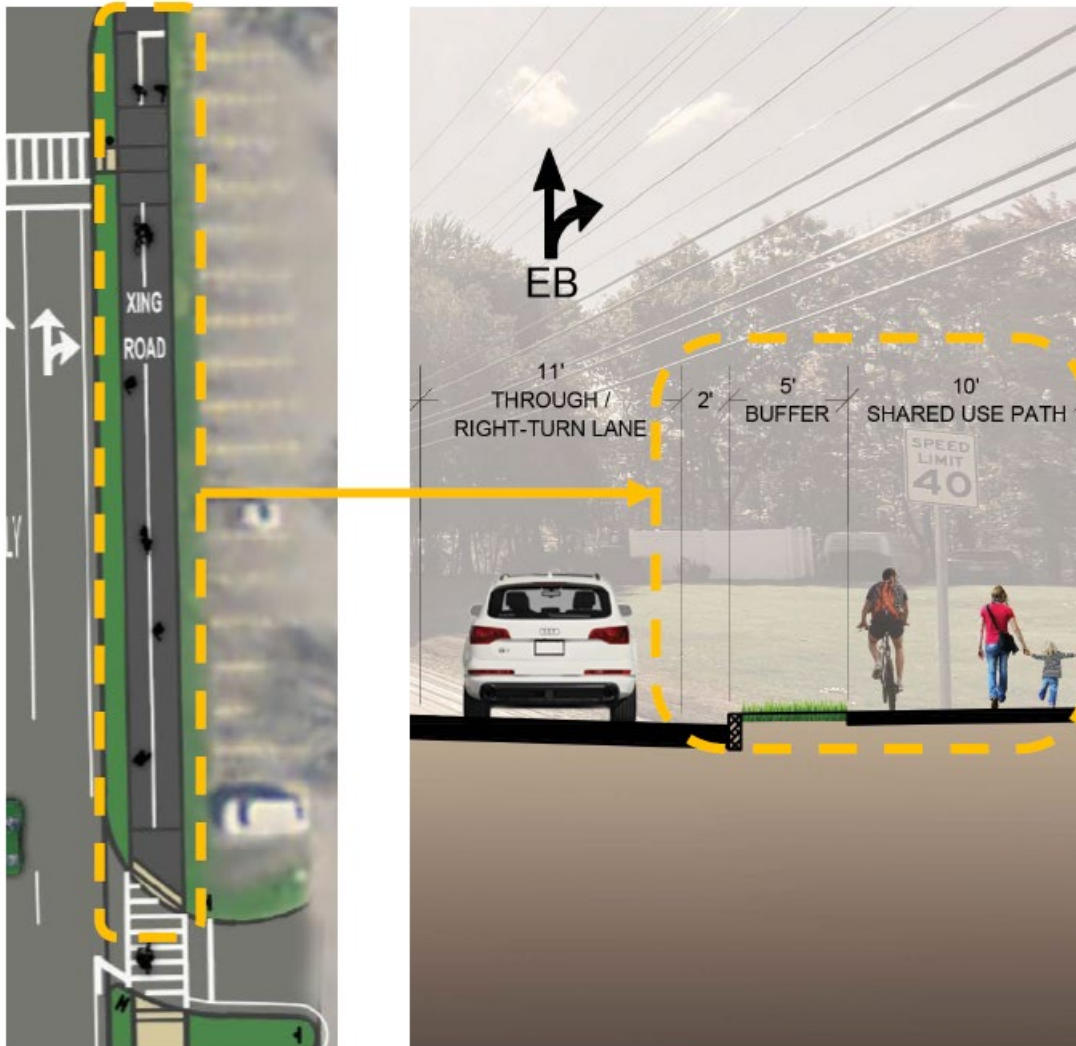
- Pedestrian connectivity to every neighborhood and business abutting Route 114
- ADA compliant pedestrian corridor
- Crosswalks at all traffic signals allow for safe pedestrian crossings



Project Overview

Bicyclist benefits

16



Bicyclist Benefits

- Shared use path along entire project length (2+ miles)
- Dedicated bike lanes on most approaches to Route 114

Project Overview

Transit benefits

17



Transit Benefits

- Bus pull-outs on both sides
- Adjacent pedestrian crossing with rectangular rapid flashing beacon
- Fully accessible bus stops, sidewalks and crossings.

