

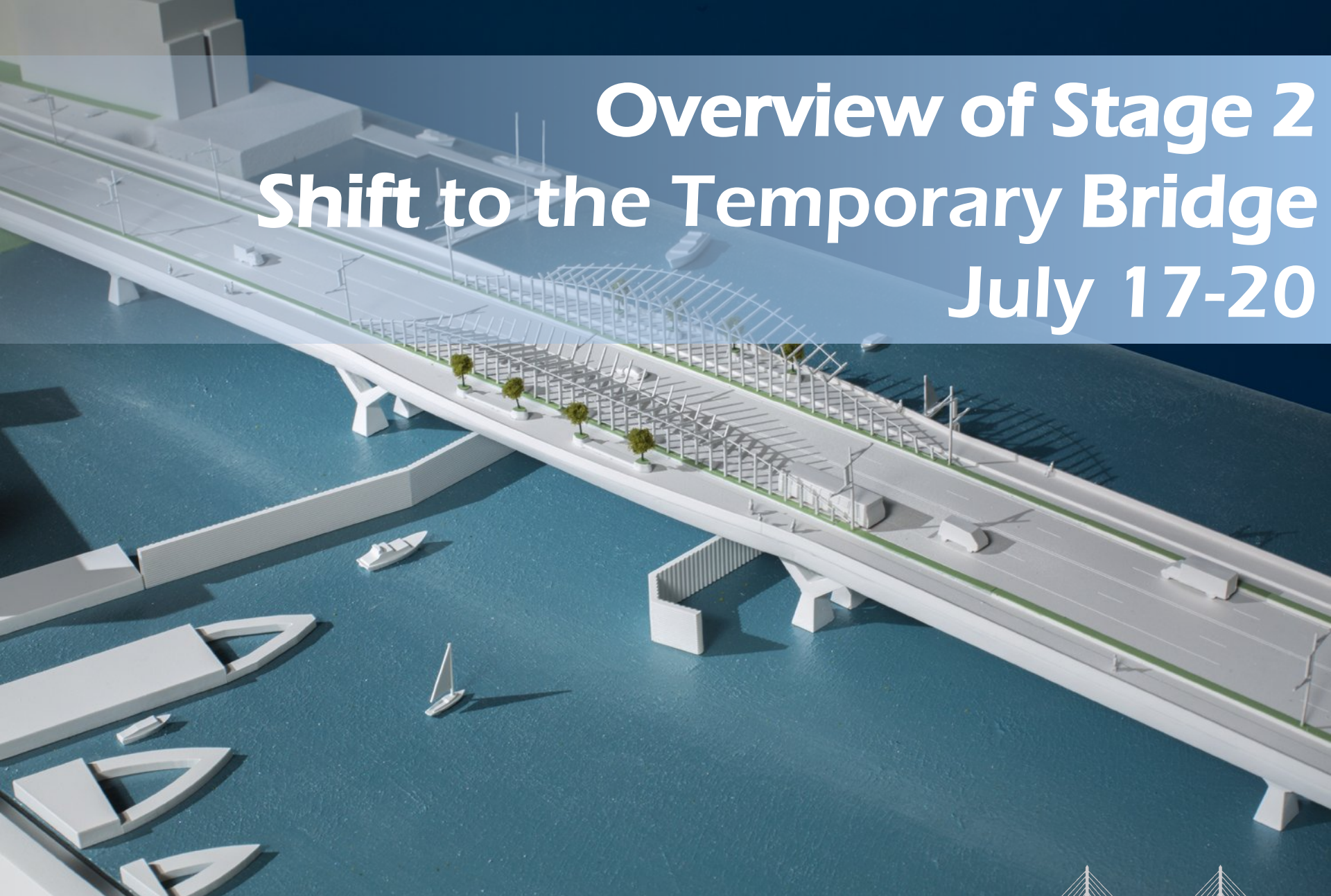


North Washington Street Bridge Public Information Meeting

Agenda



- Overview of Stage 2
- Temporary Bridge Conditions
- Traffic Management
- Project Overview
- Completed Work
- Next Steps
- Questions & Answers

An aerial photograph of a physical model of a bridge project. The model shows a long bridge spanning a body of water. A section of the bridge is covered by a temporary structure made of white poles and a translucent material. Several small white boats are visible in the water. The background is a solid blue color.

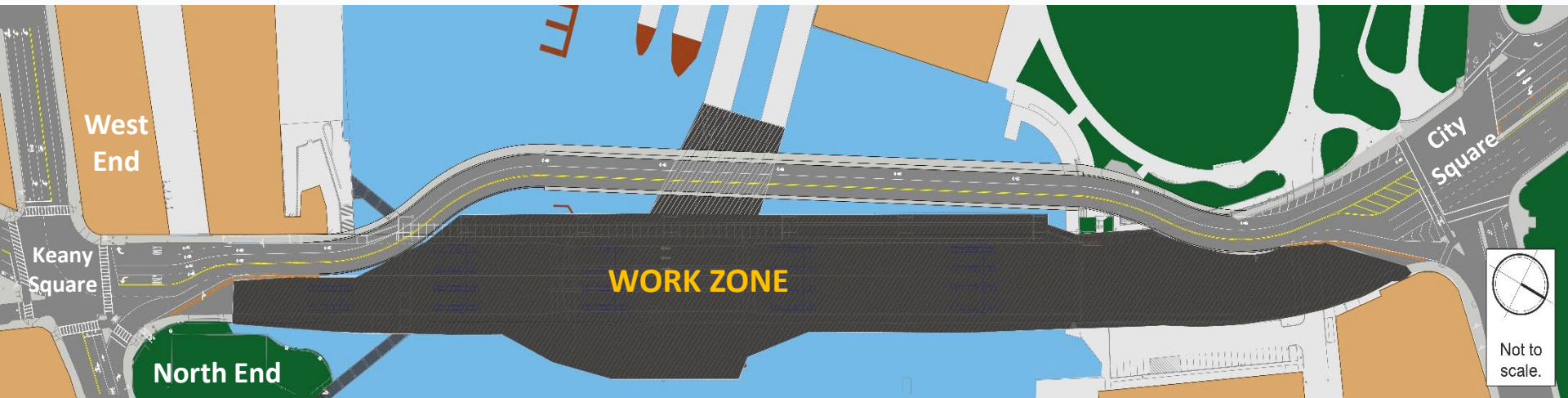
Overview of Stage 2 Shift to the Temporary Bridge July 17-20

Temporary Bridge From Lovejoy Warf



Stage 2

July 2020 – Nov. 2021



- Traffic and pedestrians diverted to temporary bridge beginning July 2020 through November 2021
- Demolition of old bridge and construction of new bridge except for the southwest corner next to the Prince Street Park and tennis courts

Temporary Bridge Conditions

For Drivers

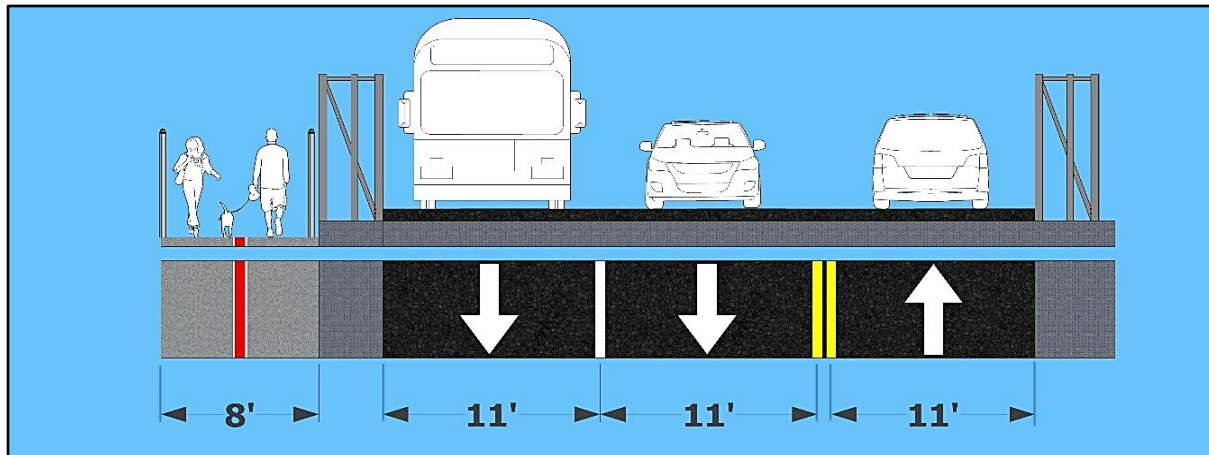


On the Temporary Bridge:

- The lanes on the structure are all 11-feet wide.
- Drivers of large vehicles are directed to use the right lane when traveling into Keany Square.
- Passing will be prohibited on the bridge with its roadway signed and striped accordingly

In Keany Square

- Due to the alignment of the temporary bridge, the left turn lane from the bridge to Commercial Street is shorter than under existing and final conditions.
- MassDOT and the City of Boston will actively monitor traffic conditions on the temporary bridge to see whether the left turn queue is spilling onto the bridge and causing problematic delays and make adjustments or modifications as needed.

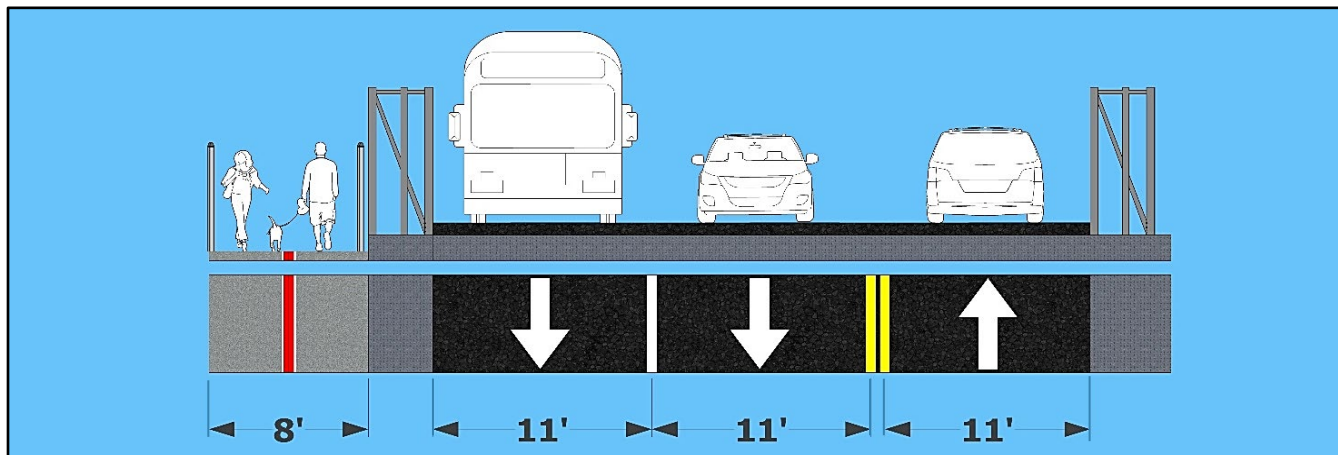


Temporary Bridge Conditions

For Bicyclists



- Bicyclists riding towards Keany Square may travel:
 - As a vehicle in the right-hand southbound lane
 - As a pedestrian on the sidewalk
- Bicyclists riding towards City Square may travel:
 - As a vehicle on the right side of the northbound lane which will be striped with sharrows
 - As a pedestrian on the sidewalk

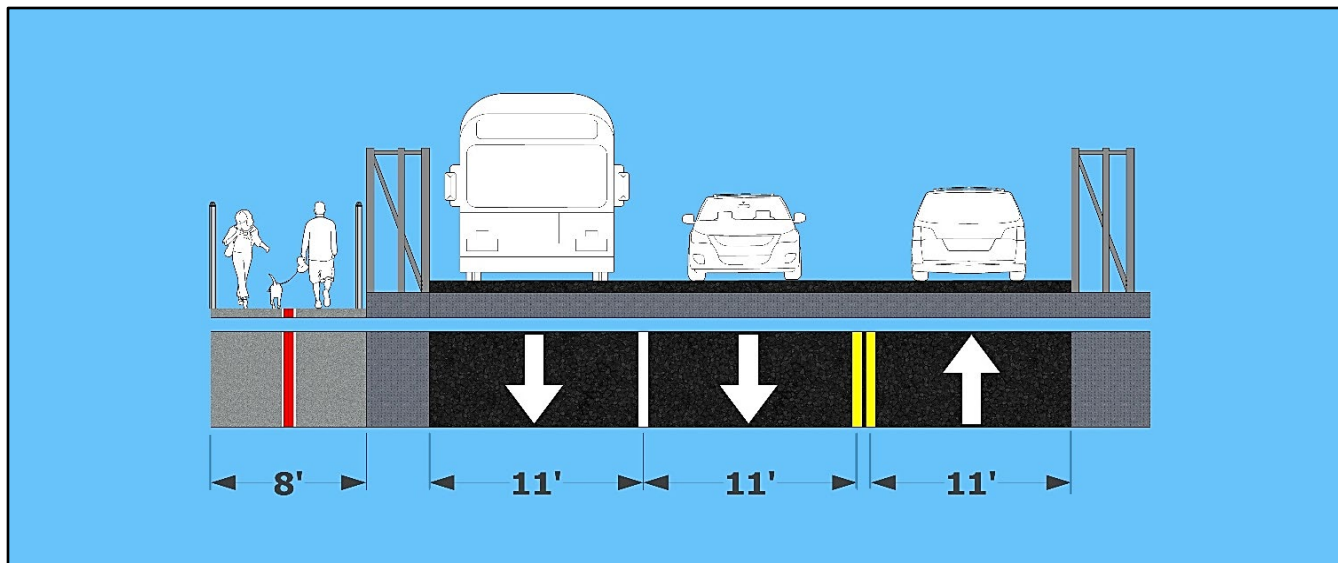


Temporary Bridge Conditions

For Pedestrians



- There will be a safe and secure 8 feet wide sidewalk on the locks side of the bridge.
- There will not be a sidewalk on the Boston harbor side of the temporary bridge.
- The freedom trail will be marked along the bridge.
- The stairs from Lovejoy Wharf to the bridge next to Converse will reopen



Enhanced Wayfinding

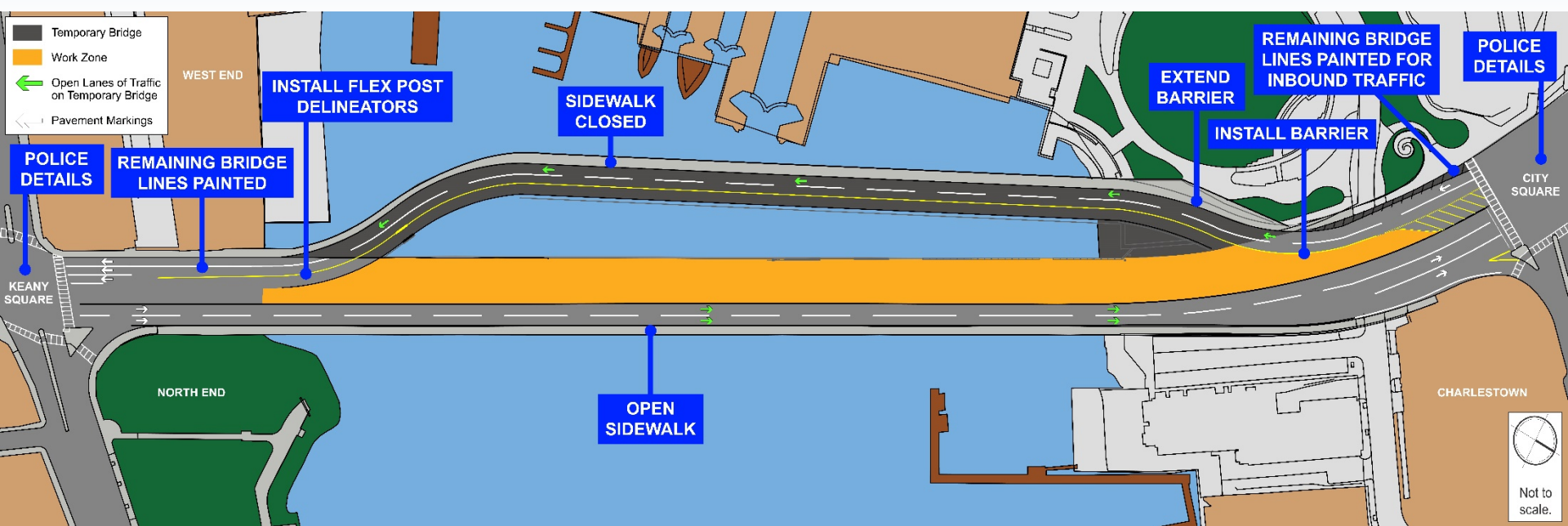


Shifting Traffic to the Temporary Bridge



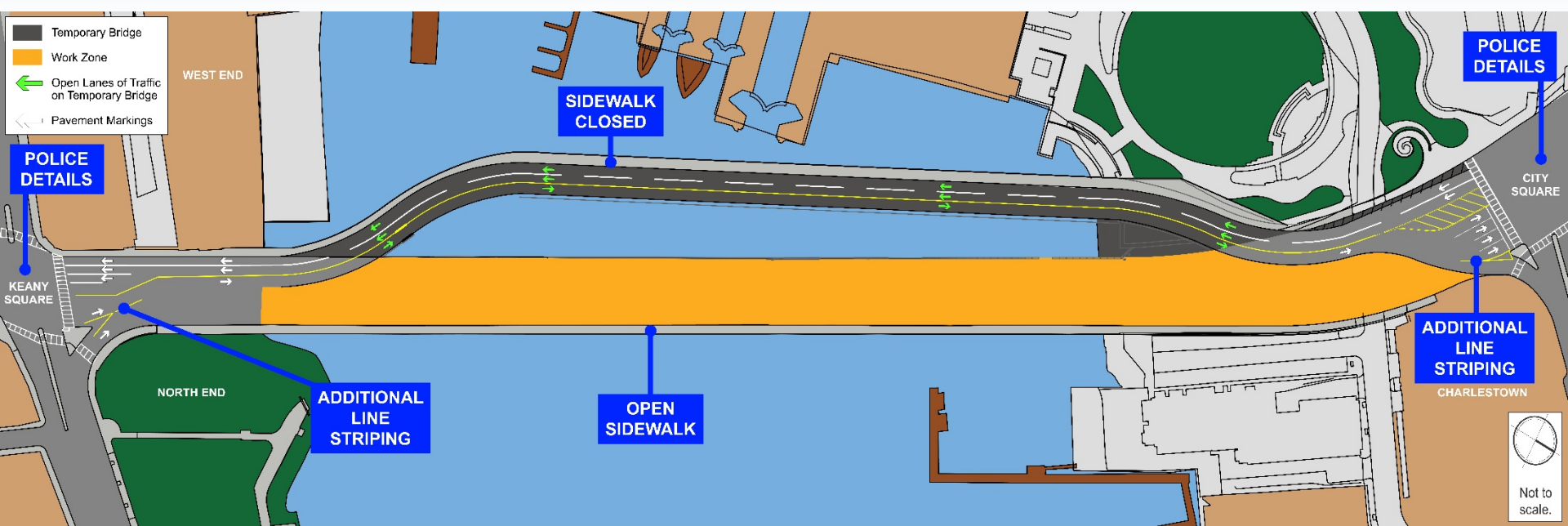
- Traffic will be shifted to the temporary bridge over the weekend of July 17th-19th
- The shift will take place with one travel direction at a time and include the following steps:
 - Use of police details to briefly stop traffic
 - Contractor will shift barrier to close lanes on the old bridge and open lanes on the temporary bridge
 - Traffic will be relocated onto the temporary bridge
- **The traffic shift will be followed by:**
 - Touch-up lane striping on the temporary bridge
 - Active traffic monitoring of traffic conditions with adjustments or modifications as needed

Stage 1 - Traffic Shift



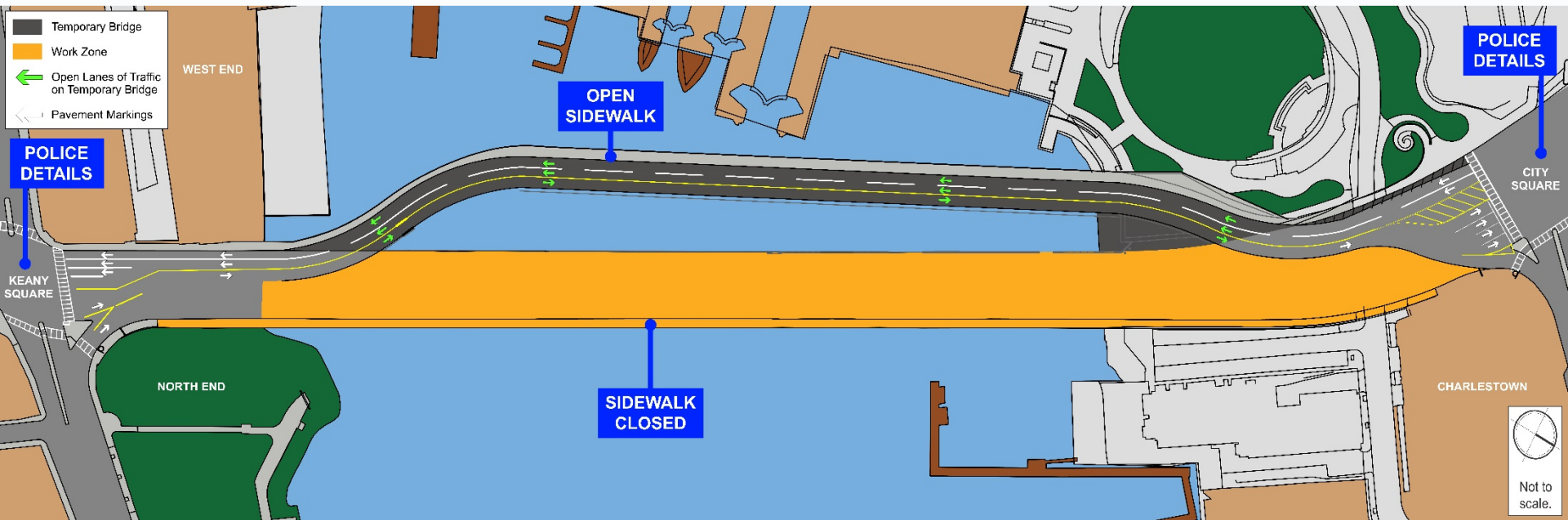
- Traffic delineators Installed at approaches on temporary bridge
- Inbound traffic to Keany Square shifts to temporary bridge
- Inbound lanes to Keany Square on permanent bridge close

Stage 2 - Traffic Shift



- Pavement markings completed at City and Keany Squares
- Outbound traffic to City Square shifts to temporary bridge
- Outbound lanes on permanent bridge closed

Stage 3 - Traffic Shift



- Sidewalk on temporary bridge opens
- Sidewalk on permanent bridge closes
- Pedestrians shift from harbor side sidewalk to locks side sidewalk
- Demolition of the permanent begins
- Police details will remain in the squares during peak periods and as needed based on traffic monitoring

Construct Stages 3 and 4

Nov. 2021 – Feb. 2023



Stage 3: Nov. 2021 – Aug. 2022

- Demolition and construction of the southwest corner of the bridge next to the Prince Street Park and tennis courts
- Traffic and pedestrians relocated to east side of new bridge

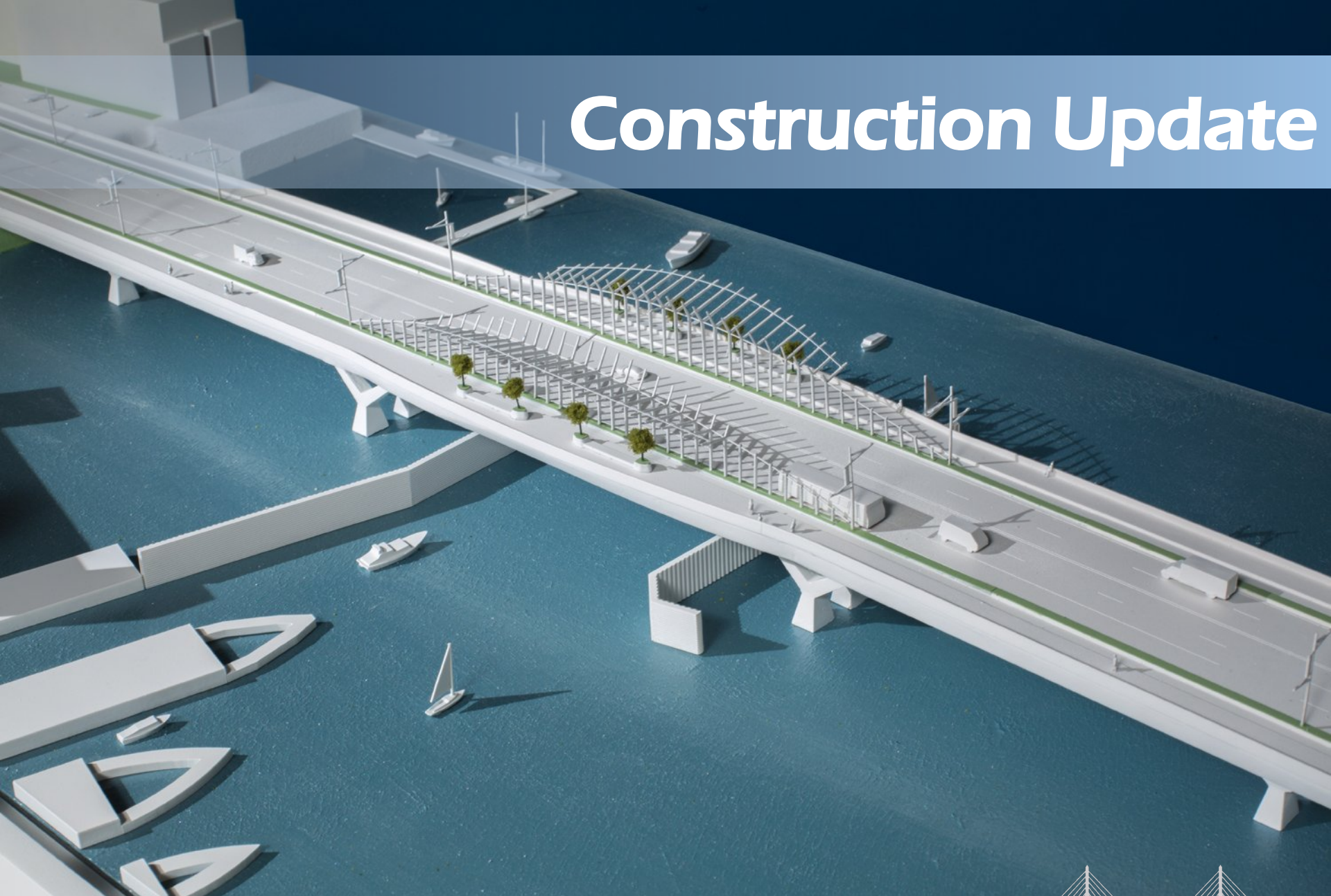
Stage 4: Sept. 2022 – Feb. 2023

- Removal of the temporary bridge
- Completion of the sidewalks, landscaping, trellis, and barriers



Questions?

Construction Update



What to Expect During Demolition



- Heaviest effort: June-September 2020 to remove the old bridge's superstructure and piers
- Project will operate 24/7 to compress impacts to abutters
 - Demolition shifts will run 7 AM – 10 PM
 - 10 PM – 7 AM shift will be used to position barges and other equipment for the 7AM -10 PM shift
- Environmental monitoring will be conducted during demolition by a third-party monitor in compliance with all applicable permitting and regulations – state and federal

Boating Impacts



- Demolition includes removal of the swing span above the navigation channel
- During removal of the swing span the navigation channel will close completely to ensure the safety of the boating public
- The complete closure is anticipated to last from July 20th- August 11th
- Construction barges will be able to pull back to allow passage of emergency vessels
- Boaters should monitor VHF channel 13 regarding the channel

Traffic Management



Local Signage



3

Charlestown
Bridge Const.
Expect Delays

4

For
Charlestown
Use Alt Route

5

Alt Route
Use
I-93 North

6

For North End
Or TD Garden
Use Alt Route

7

Alt Route
Use Leverett
Connector

8

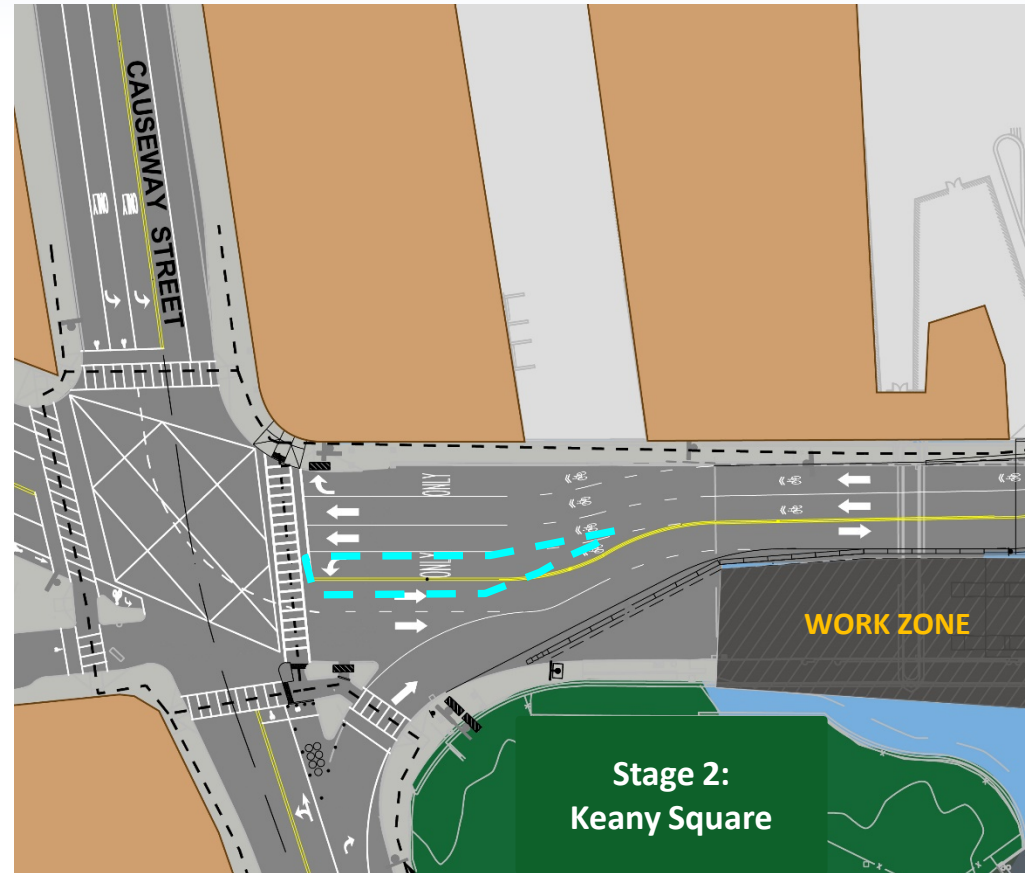
Narrow
Bridge No
Wide Loads
Seek Alt
Route

Traffic Control Plans:

Keany Square – Revised from 2018



- A shorter left turn lane is still needed for construction
- The lane has been lengthened by shifting the crosswalk south into Keany Square
- The turn may to be prohibited at times based on traffic observations
- Any closure would be done in consultation with the City of Boston and done with advanced notice to all stakeholders

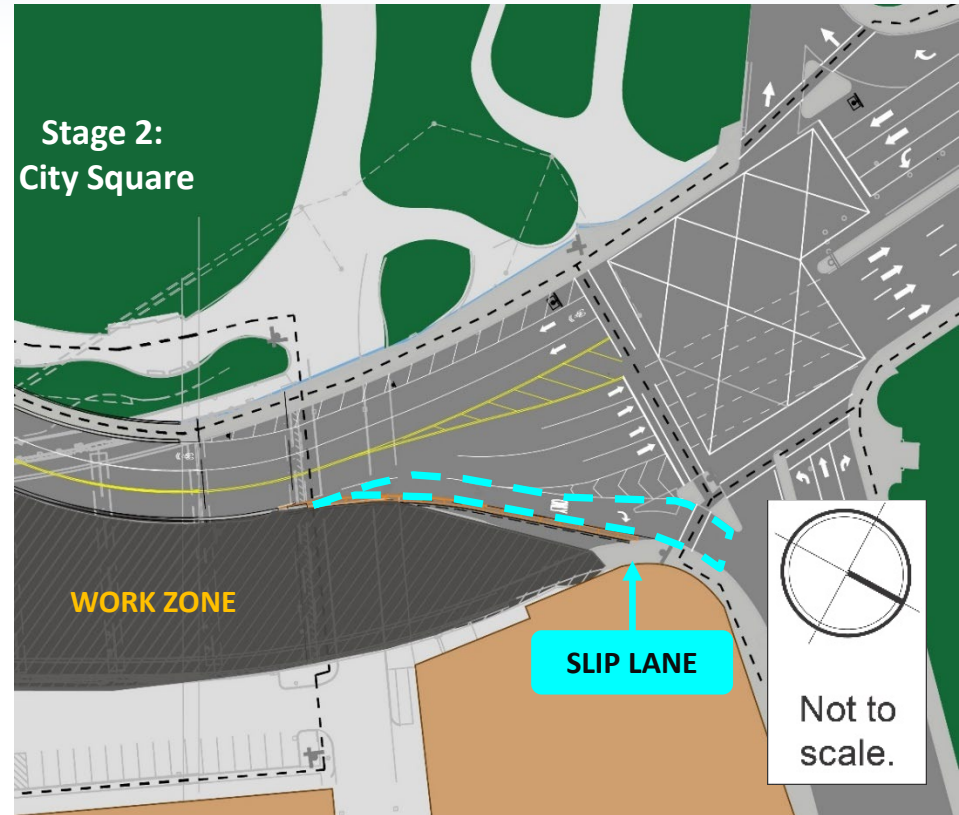


Traffic Control Plans:

City Square – Revised from 2018



- The slip lane remains in place during stage two
- An additional through lane has been added to help ease congestion
- The slip lane is still dropped in stage three for construction



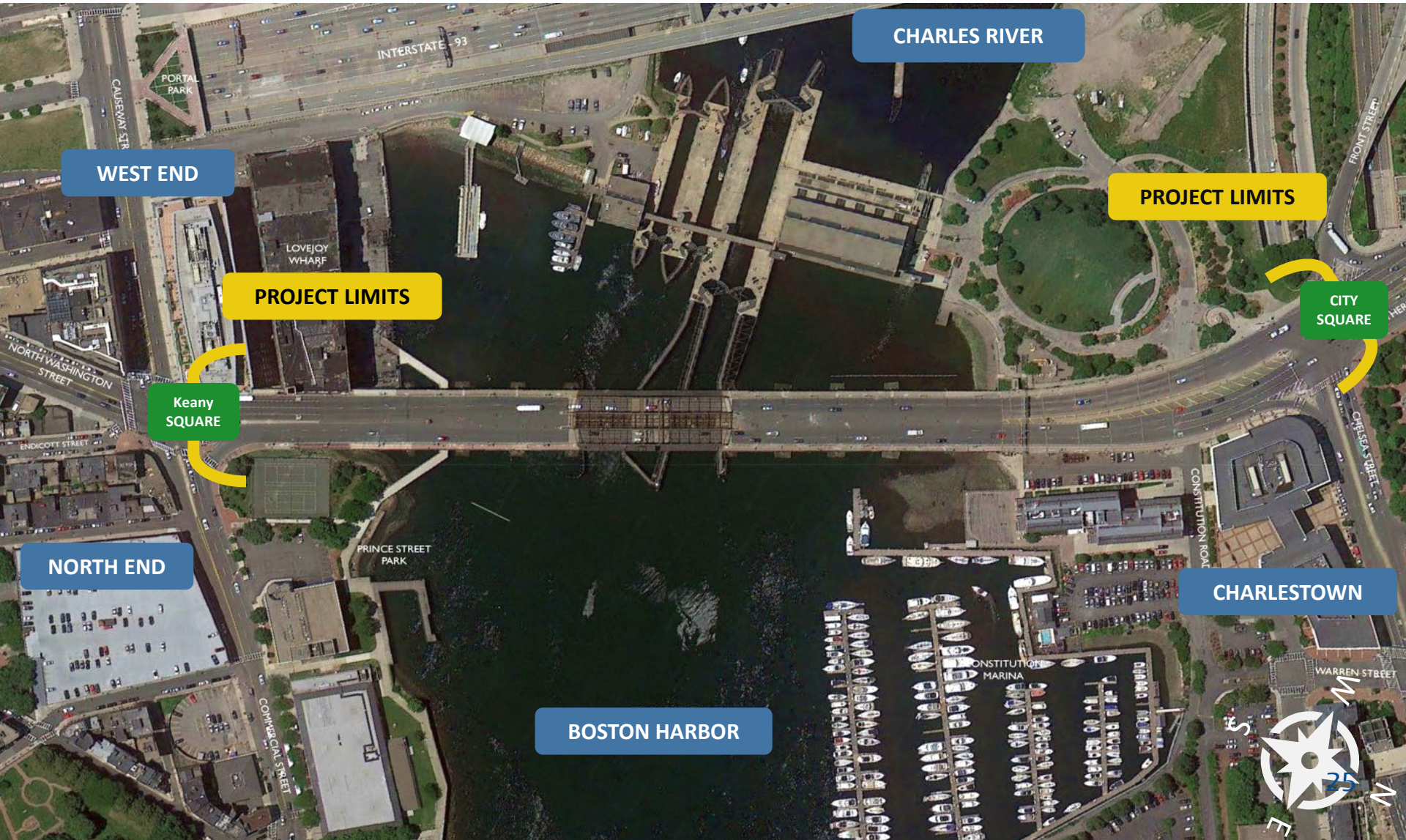


Questions?

Project Overview



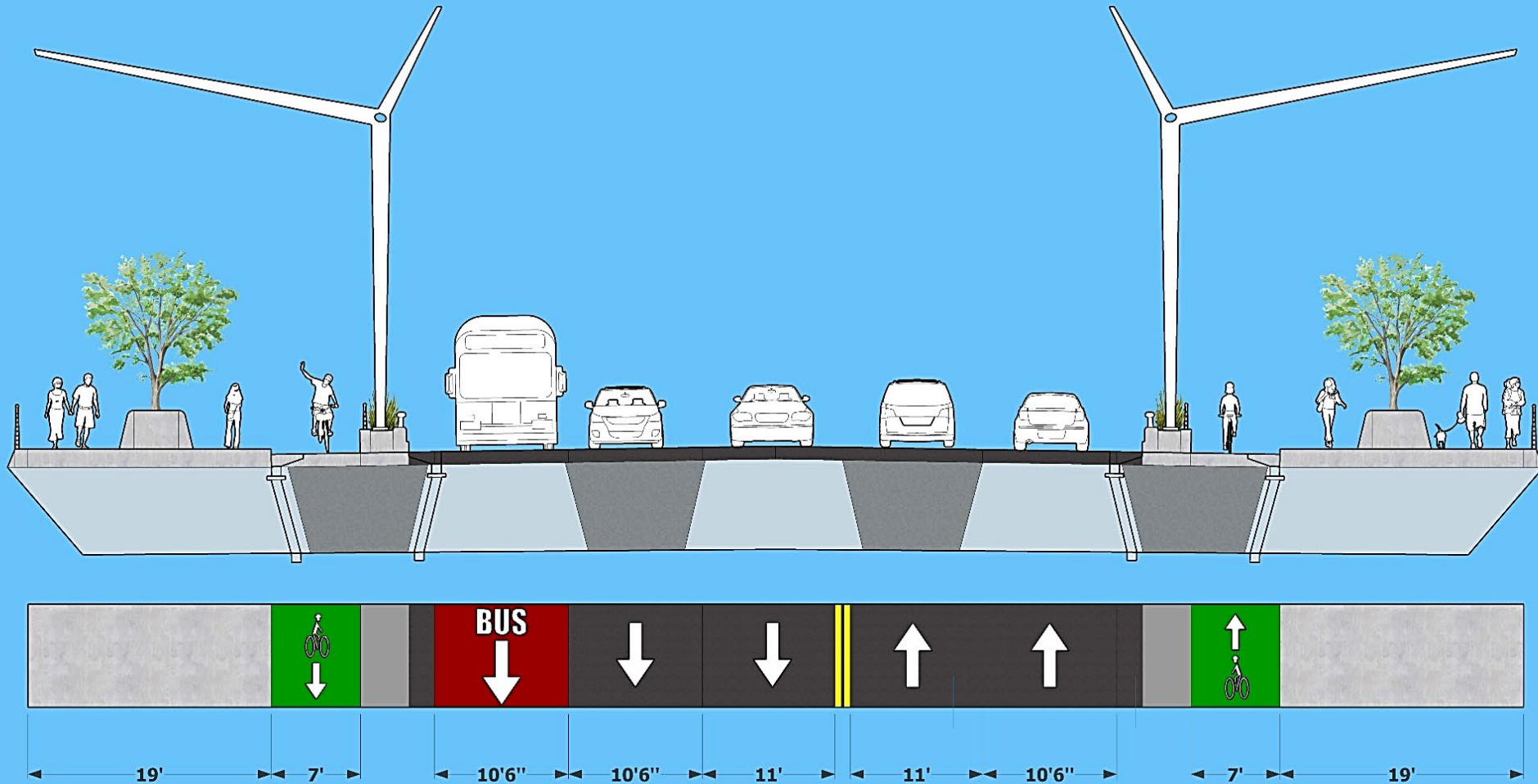
Location & Context



A Bridge for the 21st Century



New Bridge Cross-section



Completed Work



Completed Work



- Relocation of utilities to temporary utility bridge
- Construction of temporary bridge between existing span and Charles River Dam and Locks
- Relocation of Paul Revere Playground outside limits of work

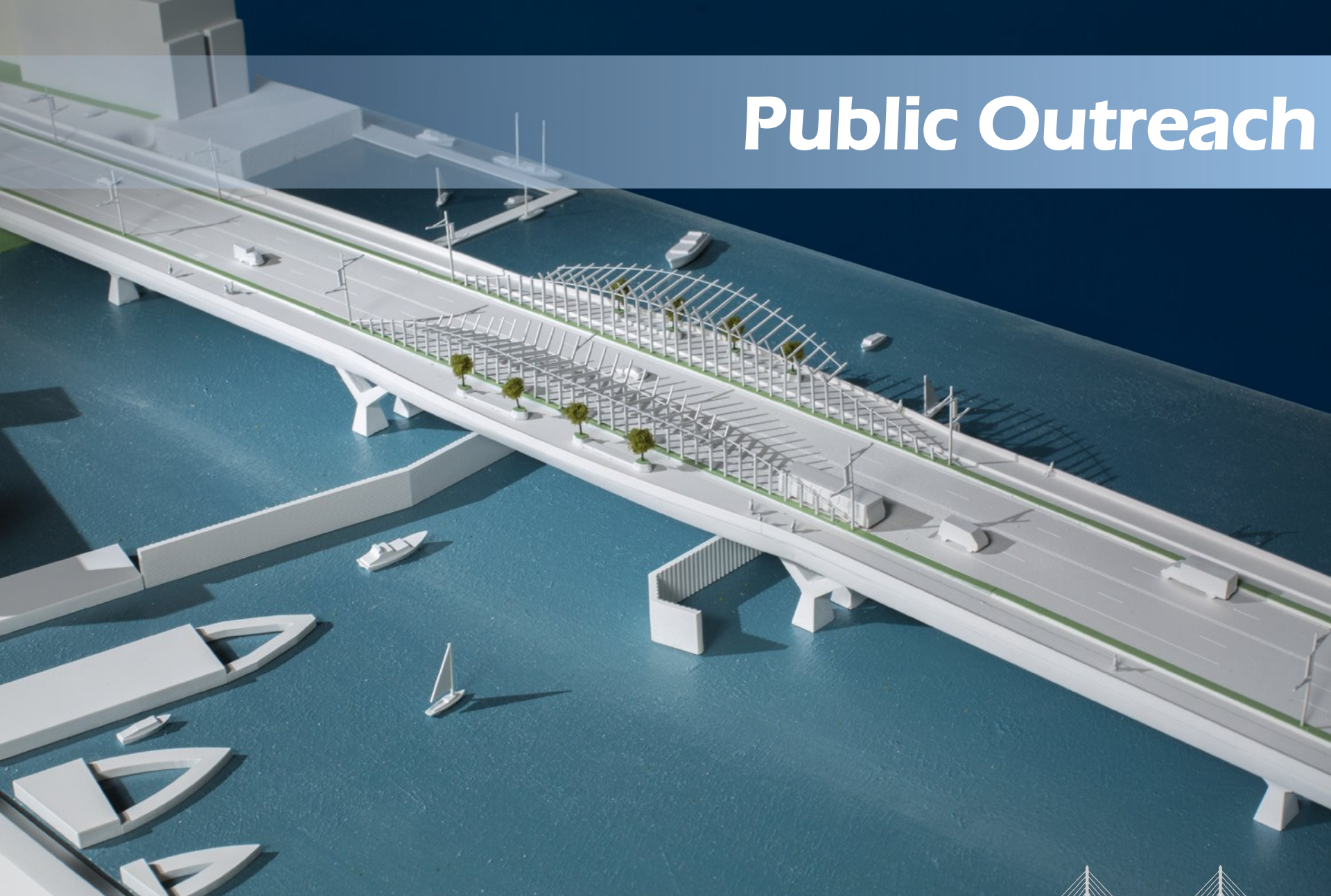
Dog Park and DCR Playground Relocation



- New Paul Revere Playground opened in October 2019
- New dog park will be built after the bridge is finished



Public Outreach



Project Updates



- The next phase of the project will be one of the most impact heavy
- MassDOT encourages everyone to sign up for email notifications about project progress, major operations, and night work
- Shared on:
 - MassDOT project website
 - Email updates to project subscribers
 - Traffic impacts included in Tobin Bridge/Chelsea Curves construction
 - Regular look aheads



North Washington Street Bridge Replacement

You are subscribed to North Washington Street Bridge Replacement Updates from Massachusetts Department of Transportation.

North Washington Street Bridge (Charlestown Bridge) Construction Look-Ahead – October 13, 2018 to October 27, 2018

This document provides a brief overview of construction operations and impacts for the North Washington Street Bridge Replacement Project. It will be supplemented by additional notices as needed for high-impact work and changes to traffic configurations beyond those described below.

Site Preparation: October 13 - October 27, 2018

Description: Preparatory work including surveys, bearing measurements, installation of signage including variable message boards, installation of air quality monitors, and borings will be taken on the piers in the median on both sides of the bridge.

Travel Impacts: None

Work Hours: Daytime (7am-6pm)

Utility Relocation: October 13 - October 20, 2018

Description: Electrical utility relocation and upgrades on the south end of the bridge at Keany Square will continue overnight on weeknights by Eversource and on Saturday morning by Comcast.

Travel Impacts: Overnight off-peak lane closures of 2 northbound lanes at the Keany Square intersection; Saturday off-peak lane closure of 1 northbound lane at the Keany Square intersection.

Work Hours: Overnight on weekdays (7pm-5am); Saturday morning 10/13 (5am-12pm); daytime Saturday 10/20 (7am-3pm)

Utility Relocation: October 21 - October 27, 2018

Description: Electrical utility relocation and upgrades on the south end of the bridge at Keany Square will continue overnight on weeknights by Eversource and on Saturday morning by Comcast.

Travel Impacts: Overnight off-peak lane closures of 3 southbound lanes at the Keany Square intersection; Saturday off-peak lane closures of 2 northbound lanes at the Keany Square intersection.

Work Hours: Overnight on weekdays (7pm-5am); Saturday daytime (7am-3pm)

Travel Tips

Please take care to pay attention to all signage and police details and move carefully through the work zone. Police details, changes in lane markings, temporary controls such as barriers and traffic cones, signage, and other tools will be used throughout the project to control traffic and create safe work zones.

The contractor is coordinating with the TD Garden and local police to provide awareness and manage traffic impacts during events. For your awareness, during this look-ahead period, the following events are scheduled:

Celtics:	10/16 at 8pm; 10/22 at 7:30pm
Bruins:	10/13 at 3pm; 10/25 at 7pm; 10/27 at 7pm
Concerts:	10/14 at 7:30pm; 10/18 at 7:30pm; 10/20 at 5pm; 10/21 at 7pm; 10/26 at 7pm

Virtual Public Meetings

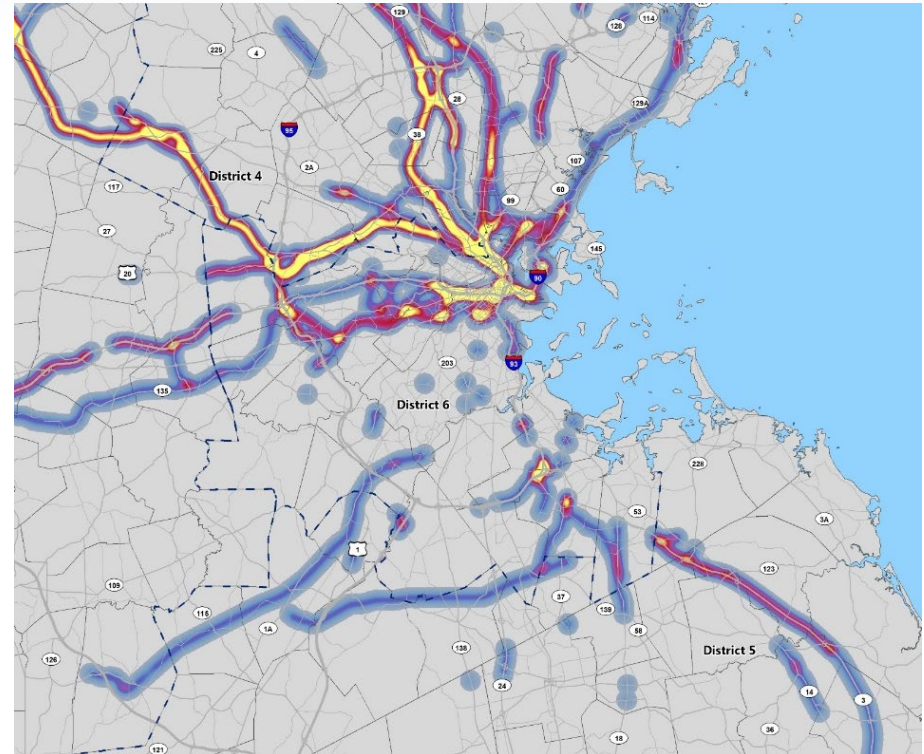


- To maximize public participation, three virtual public meetings will be held on the following dates: June 30, July 1, and July 2
- This reflects the 2018 public meetings held in each neighborhood abutting the project
- Notice of the virtual meetings will be noticed as follows:
 - Advertised in The Boston Globe, The Beacon Hill Times, The Charlestown Patriot Bridge, and NorthEndWaterfront.com
 - Flyers posted in Charlestown, North End, and West End at available locations in compliance with Commonwealth's directives regarding Covid19
 - Announcements on the project website and MassDOT social media
 - Email notifications sent to project subscribers and included in the City of Boston Office of Neighborhood Services digital newsletter
 - Post cards and signage disbursed into Charlestown, North End, and West End
- Stakeholder meetings

Regional Outreach and Social Media



- MassDOT social media to broaden outreach
- Regional outreach and specific messaging to specific users
- Outreach to North Shore
- Ongoing coordination with City of Boston social media channels



facebook.com/massdotinfo



[@MassDOT](https://twitter.com/MassDOT)

Contact



Sign up for progress updates and meeting minutes and learn more about the project at:

www.mass.gov/north-washington-street-bridge-replacement



Email your questions, general inquiries, and comments to
NorthWashingtonStreet@dot.state.ma.us



North Washington Street Bridge



Questions?