

Northern Strand Wayside

PUBLIC MEETING 2

Schematic Design

January 22, 2024



COMMONWEALTH OF MASSACHUSETTS

Governor

Maura T. Healey

Lieutenant Governor

Kimberley Driscoll

Energy and Environmental Secretary

Rebecca L. Tepper

Department of Conservation and Recreation Commissioner

Brian Arrigo



DCR MISSION STATEMENT

To protect, promote and enhance
our common wealth of natural,
cultural and recreational resources
for the well-being of all.

MEETING LOGISTICS

- You will have the opportunity to submit comments over the course of the next three weeks at:
 - DCR Public Comments
<https://www.mass.gov/forms/dcr-public-comments>
- Two ways to ask questions during the meeting
 - Use chat feature
 - Raise your hand: Click “Reaction”, then click “Raise Hand” and you will be given permissions to unmute and speak.
- Please note that this public information meeting will be recorded; the recording will be a public record.



AGENDA

- 1. Team Introductions**
- 2. Project Overview**
- 3. Original Concepts and Received Public Feedback**
- 4. Current Design: Schematic Design
(25% Construction Documents)**
- 5. Public Input: Q&A**



1

TEAM INTRODUCTIONS

CLIENT

Division of Design & Engineering

Department of Conservation & Recreation

DESIGN TEAM

Landscape Architecture

Halvorson | Tighe&Bond Studio

Civil Engineering, Ecological and Wetland Science, GIS

Tighe&Bond

Cultural Resources

Chronicle Heritage

Interpretive and Wayfinding Signage

goodgood

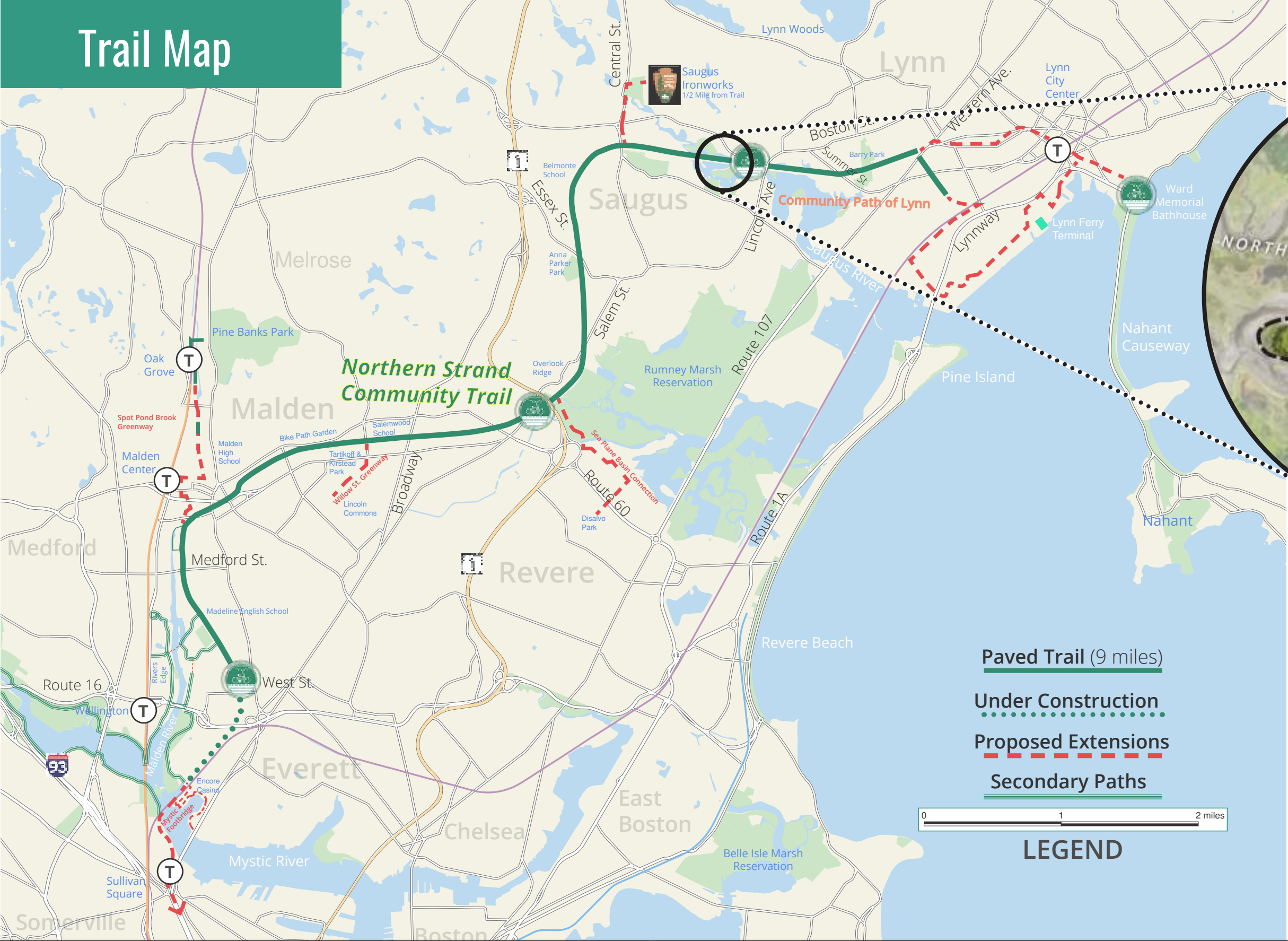


2

PROJECT OVERVIEW

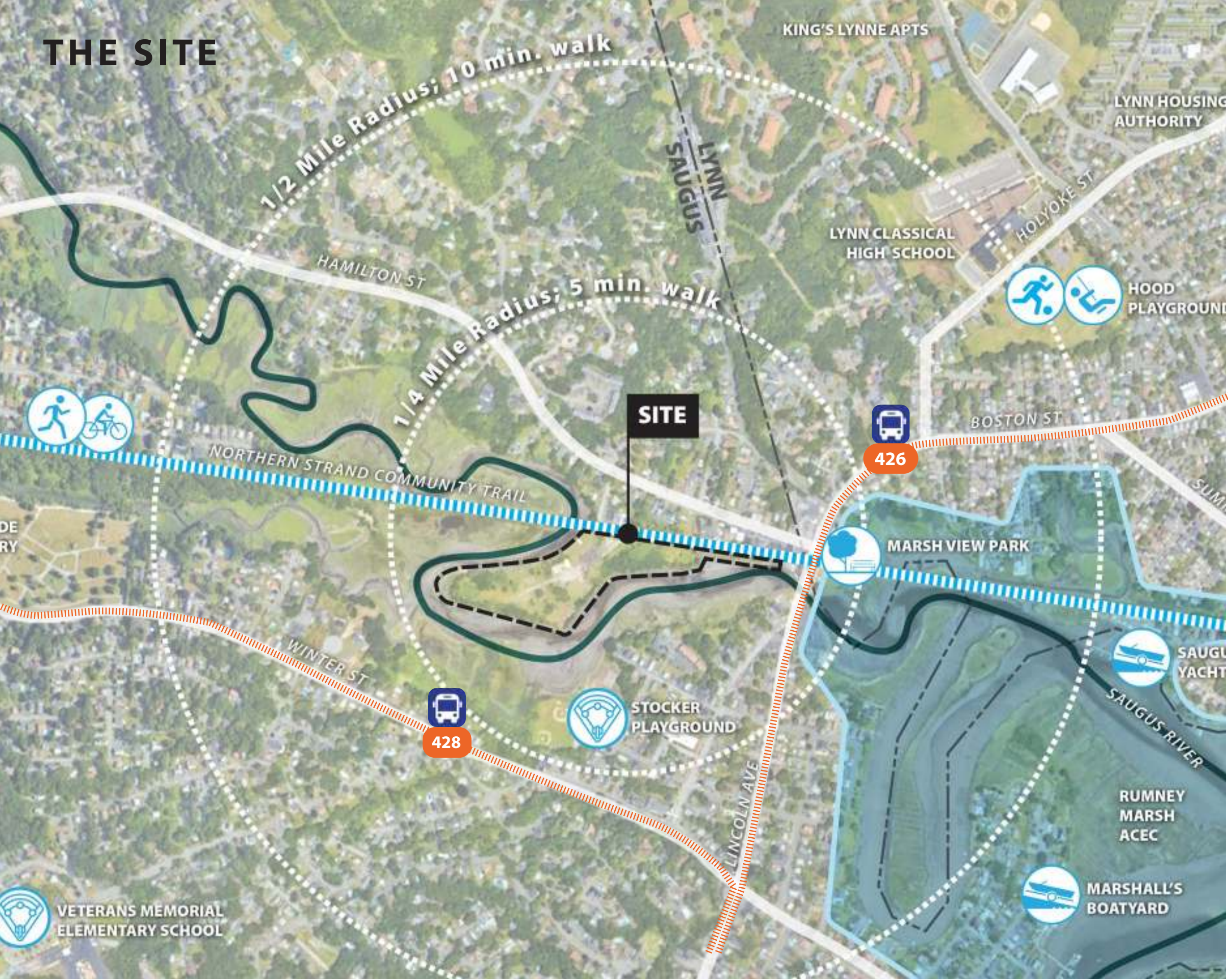
- **The Site, Project Area & Context**
- **Project Goals**
- **Schedule**

PROJECT AREA & CONTEXT



Project Area

THE SITE



INSPIRATIONAL LANDSCAPE



DISTRESSED SITE TO BE RESTORED



ECOLOGICALLY VALUABLE LOCATION



PASSIVE RECREATION POTENTIAL

EXISTING CONDITIONS



NORTHERN STRAND WAYSIDE - SAUGUS, MA
SCHEMATIC DESIGN PRESENTATION - JANUARY 2025

PROJECT GOALS

Protect the ecologically sensitive landscape and create a universally accessible and sustainable passive recreation park.



Site Remediation

- Remove contaminated soils and pavements from the site’s prior industrial use
- Manage invasive plants



Ecological Enhancement

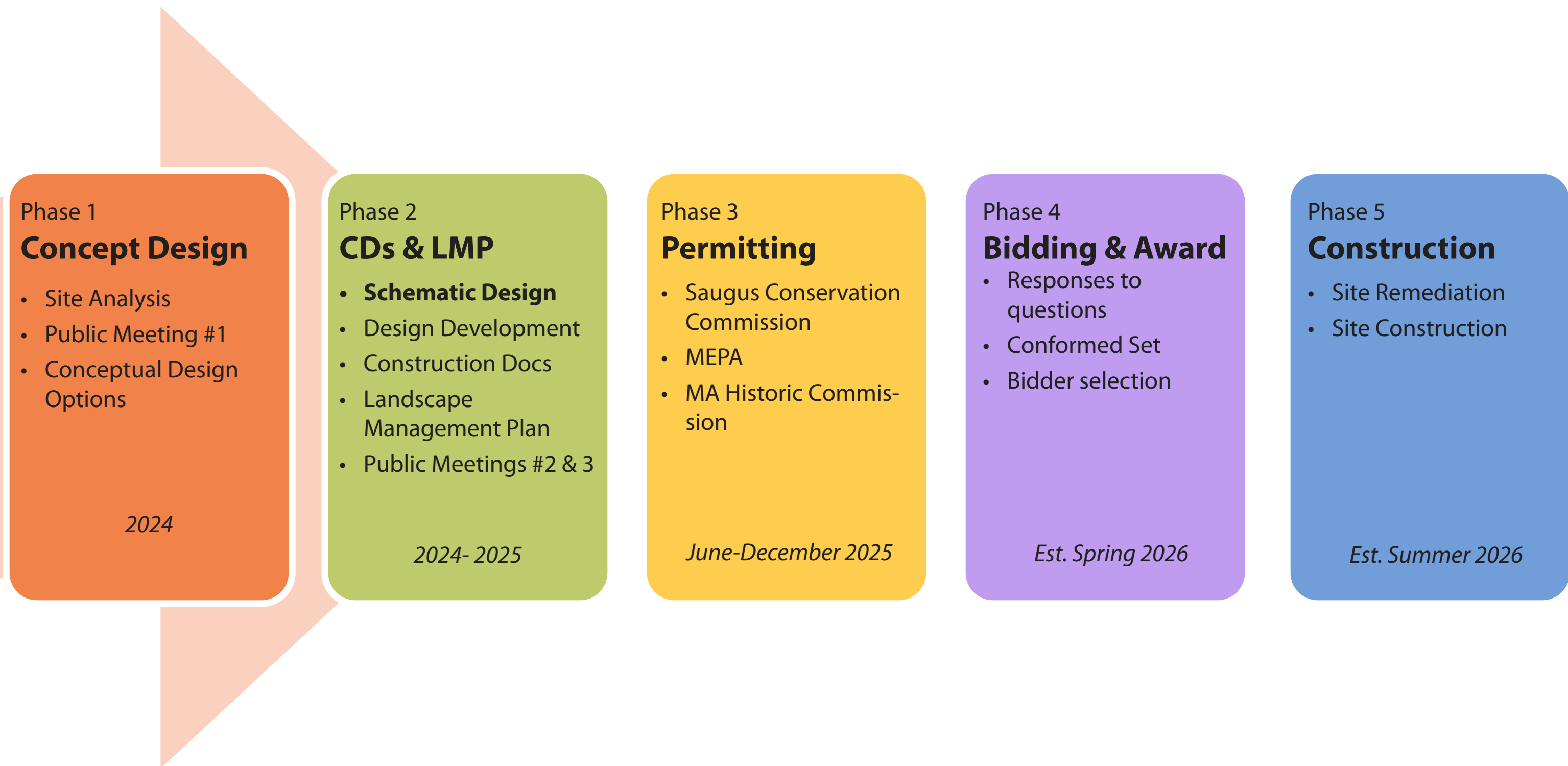
- Minimize impacts to ecologically sensitive areas
- Provide landscape restoration with habitat-enhancing plants
- Integrate nature-based stormwater management



Passive Recreation

- Create universally accessible parkland
- Invite visitors to walk, birdwatch, picnic, and enjoy the landscape
- Create educational opportunities related to the site’s ecology

PROJECT SCHEDULE



3

ORIGINAL CONCEPTS

- Concepts 1 and 2
- Public Feedback on Concept Plans

CONCEPT 1 | MEANDERING JOURNEY THROUGH HABITATS



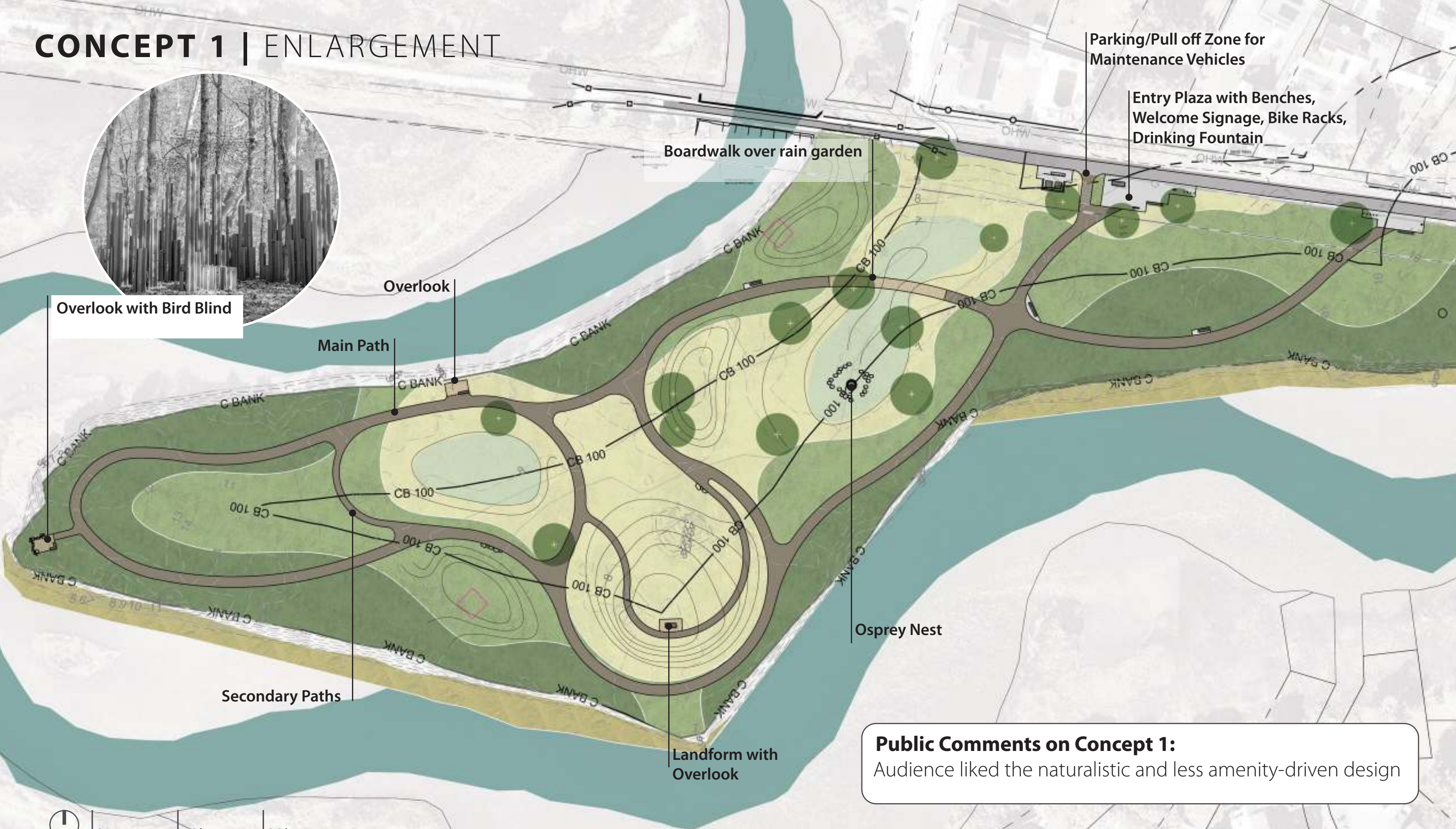
CONCEPT 2 | OUTDOOR RECREATIONAL ROOMS



CONCEPT 1 | ENLARGEMENT

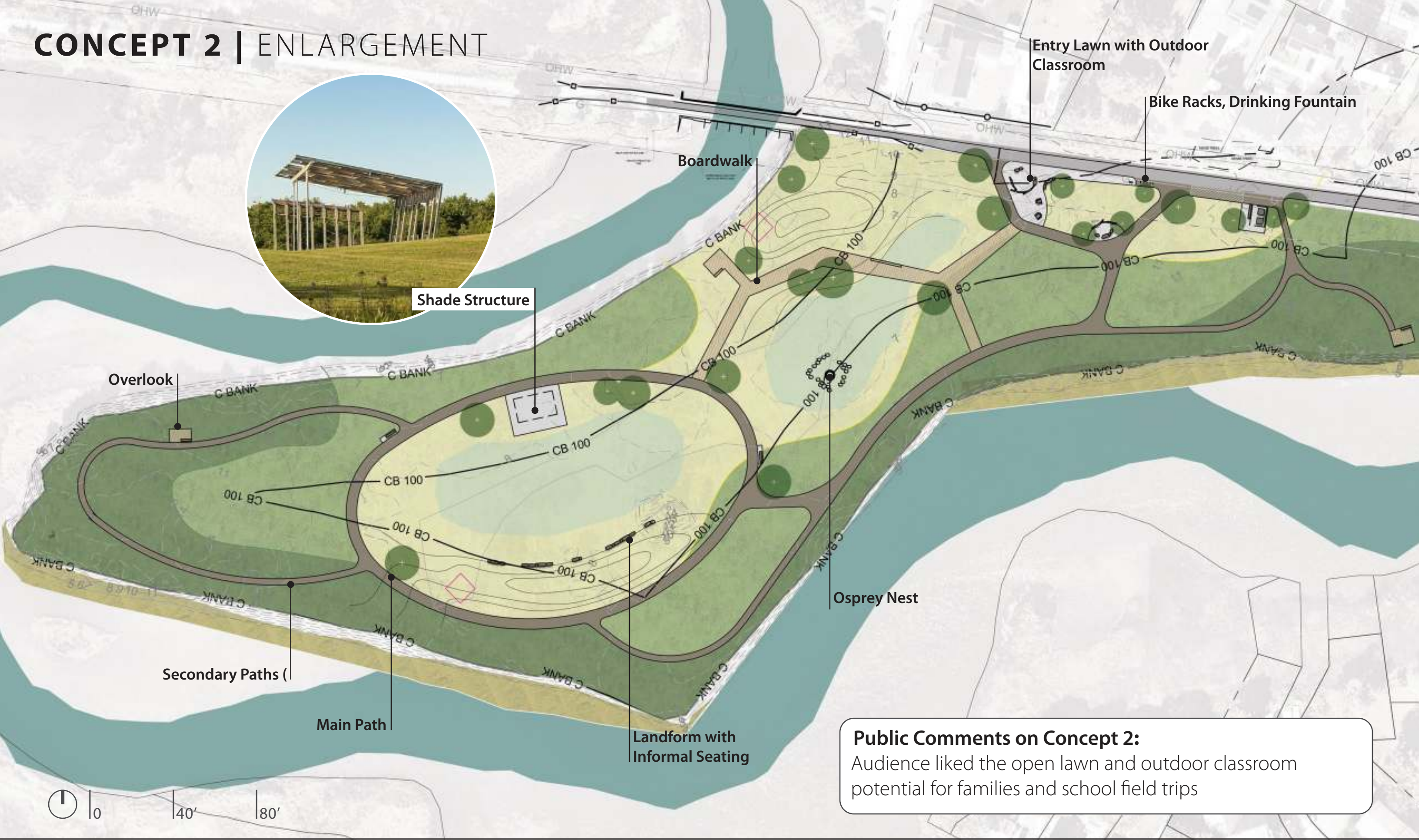


Overlook with Bird Blind



Public Comments on Concept 1:
Audience liked the naturalistic and less amenity-driven design

CONCEPT 2 | ENLARGEMENT



Public Comments on Concept 2:
Audience liked the open lawn and outdoor classroom potential for families and school field trips

INITIAL CONCEPTS - WHAT WE HEARD

Comments from Stakeholders and Public Meeting #1:

Desirable Amenities

- Drinking fountain
- Bike racks, bike repair station
- Educational and interpretive signage
- Shade structure / Gazebo
- Restrooms, visitor facility
- Canoe/kayak landing (while desirable it is not feasible at this location)

Resiliency Strategies

- Implement nature-based solutions for stormwater management
- Design a resilient park able to recover after storm surge and flooding

Vegetation Management

- Enhance the site's ecological function with invasive plant removal and more native plantings
- Consider partnerships for future site management and stewardship

Habitat

- Design the park to support habitat for both year-round and migratory birds

Site Access and Parking

- Lack of nearby parking is challenging for people with disabilities and school groups arriving via bus

SCHEMATIC DESIGN | ENLARGEMENT



PROPOSED SITE CHARACTER



Curving Paths through Open and Wooded Areas



Landforms



Overlooks w/ Reclaimed Stone Seats



Elevated Overlook



Boardwalks



Native Plant Meadows

PROPOSED PROGRAM | EDUCATIONAL OPPORTUNITIES



Informal Sitting Circles



Natural Systems Viewing Opportunities



“Kildeer Beach” Gravelly Slope for Nesting



Osprey Nest

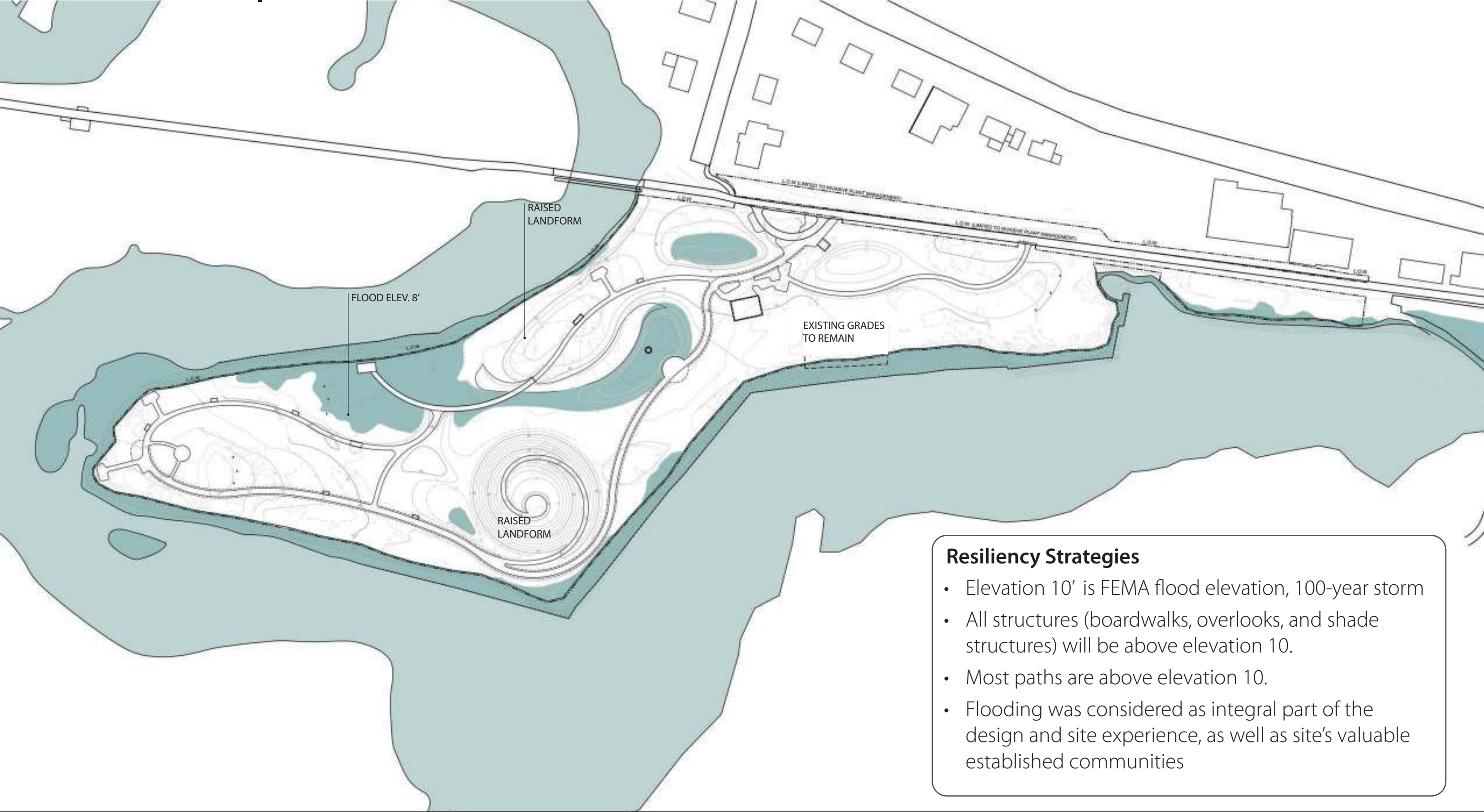


Bird Houses



Chronolog Viewing Stations (Interactive Time-Lapse)

RESILIENCY | LANDFORMS AND FLOODING PATTERN - ELEV. 8'



Resiliency Strategies

- Elevation 10' is FEMA flood elevation, 100-year storm
- All structures (boardwalks, overlooks, and shade structures) will be above elevation 10.
- Most paths are above elevation 10.
- Flooding was considered as integral part of the design and site experience, as well as site's valuable established communities

The map illustrates a coastal or wetland area with a large body of water (light blue) on the left and right. A central land area is shown with various features:

- RAISED LANDFORM:** Two areas are labeled with this text, pointing to elevated landforms. One is a large, irregularly shaped area in the upper left, and the other is a circular, spiral-shaped area in the lower left.
- FLOOD ELEV. 9':** A label with a line pointing to a dashed line representing the 9-foot flood elevation.
- EXISTING GRADES TO REMAIN:** A label with a line pointing to a dashed line representing the existing ground levels.
- LOW SANTED TO REMEDY PLANT MANAGEMENT:** A label with a line pointing to a dashed line representing the low water level for plant management.
- LOW SANTED TO INVASIVE PLANT MANAGEMENT:** A label with a line pointing to a dashed line representing the low water level for invasive plant management.

Resiliency Strategies

- Elevation 10' is FEMA flood elevation, 100-year storm
- All structures (boardwalks, overlooks, and shade structures) will be above elevation 10.
- Most paths are above elevation 10.
- Flooding was considered as integral part of the design and site experience, as well as site's valuable established communities

- Elevation 10' is FEMA flood elevation, 100-year storm
- All structures (boardwalks, overlooks, and shade structures) will be above elevation 10.
- Most paths are above elevation 10.
- Flooding was considered as integral part of the design and site experience, as well as site's valuable established communities

SITE AMENITIES



SITE AMENITIES | DCR STANDARD FURNISHINGS



Bike Rack



Bike Repair Station



Water Refill Station



Bench



ADA-Accessible Picnic Table

SITE AMENITIES | STRUCTURES



Shade Structure



Bench Shade Canopy



Maintenance Shed

SITE AMENITIES | SIGNAGE PALETTE

DCR Sign Precedents for Northern Strand Wayside



DCR Cantilevered ID Sign Initial Mockup



DCR Welcome Wayside Orientation Sign



DCR Safety and Rules Sign Initial Mockup



DCR Interpretive Sign Examples

5

PUBLIC INPUT / Q&A

- Please state your name and community affiliation
- Please provide your feedback on Design

ADDITIONAL INFORMATION

- Recording and tonight's slide deck will be available at:
 - www.mass.gov/dcr/past-public-meetings
- If you have comments on this project:
 - Submit online: <https://www.mass.gov/forms/dcr-public-comments>
 - Deadline: Three Weeks

Please note: the contents of comments submitted to DCR, including your name, town, and zip code, will be posted on DCR's website. Additional contact information provided, notably email address, will be used for outreach on future updates to the subject project of property.

- If you wish to subscribe to a DCR general information on project-related listserv:
 - Contact DCR's Office of Community Relations via email at mass.parks@mass.gov

Thank You

