

I 90: Watershed and River Edge Restoration Opportunity: Slide 1



Pallavi Kalia Mande
Director of Blue Cities, Charles River Watershed Association
November 2018

I 90: Watershed and River Edge Restoration Opportunity: Slide 2



Legend

 Allston Study Area

Impervious Cover

 Pervious

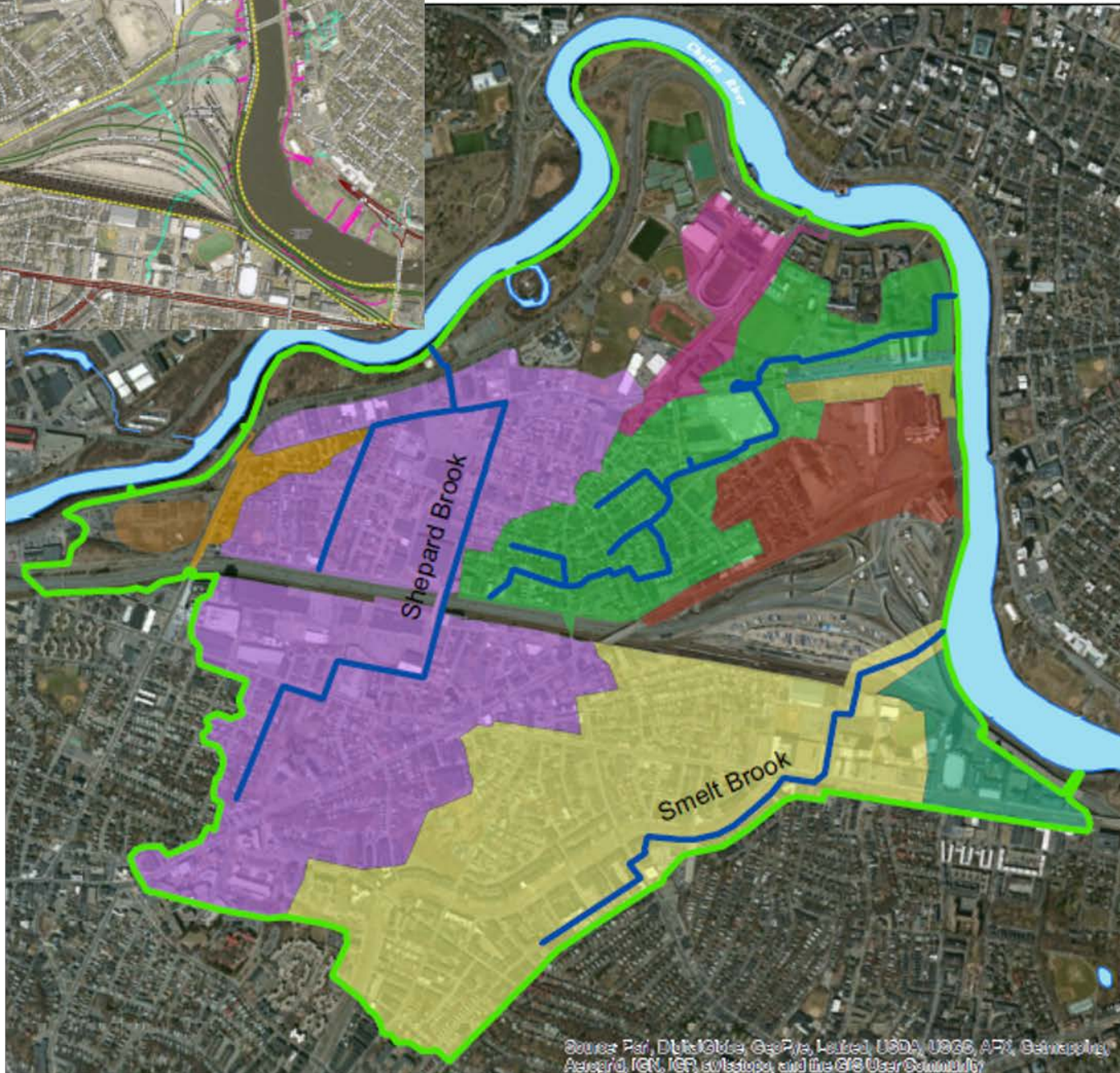
 Impervious



0 350 700
Feet

Data Sources: MassGIS, CRWA

I 90: Watershed and River Edge Restoration Opportunity: Slide 3



Study Area Subwatersheds and Culverted Streams



Figure A

Legend

- Culverted Streams
- Allston Study Area
- Surface Waters
- Subwatersheds**
 - DO001
 - DO006
 - DO034
 - DO035
 - DO037
 - DO038
 - DO040
 - DO150

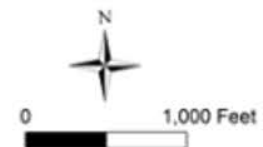
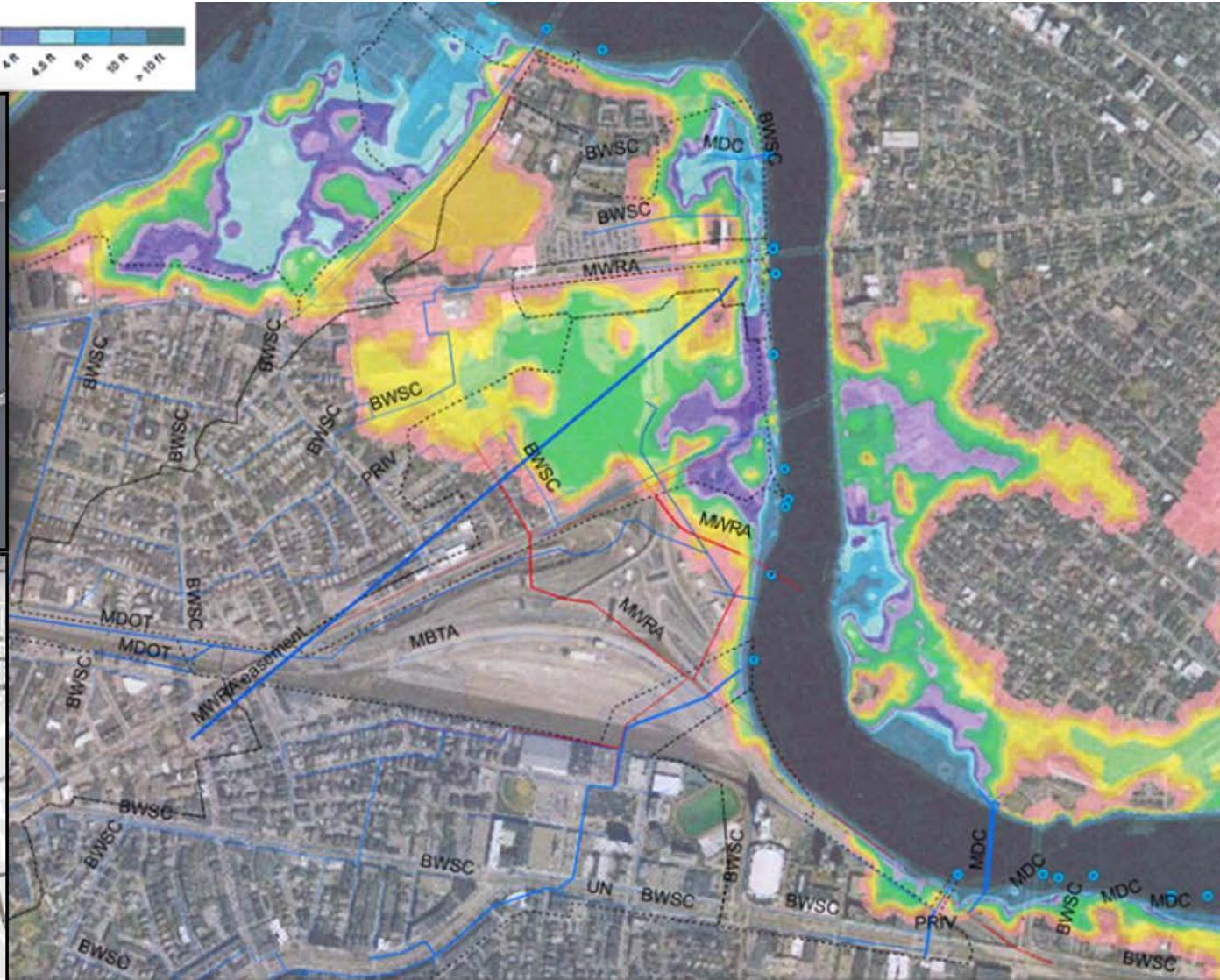
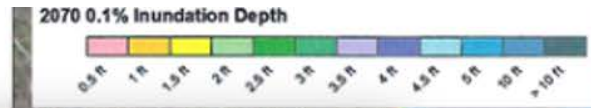


0 350 700
Feet

Data Sources: MassGIS, CRWA

Source: Esri, DigitalGlobe, GeoEye, USDA, USGS, AeroGRID, IGN, ICG, and the GIS User Community

I 90: Watershed and River Edge Restoration Opportunity: Slide 4

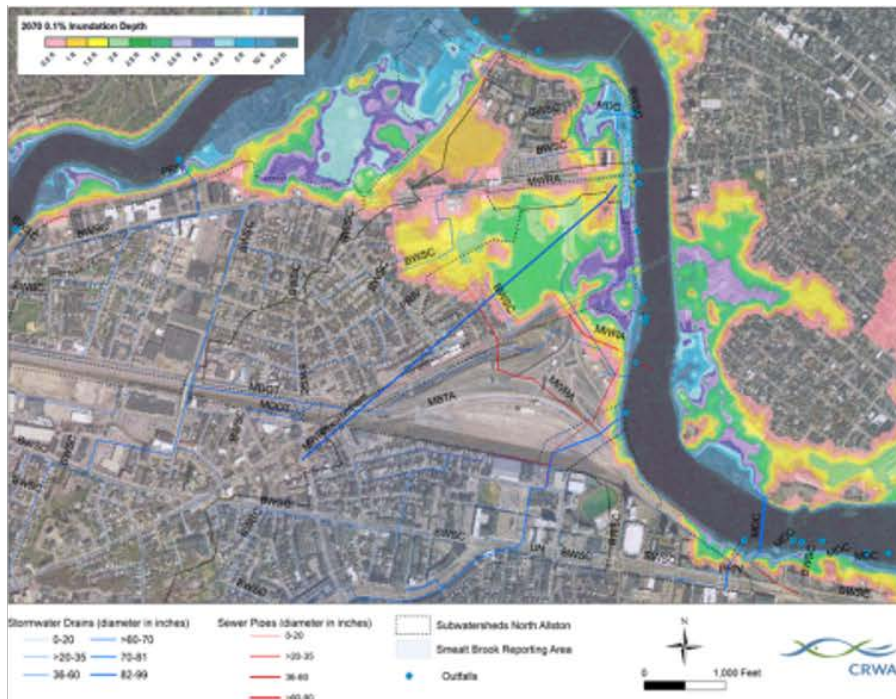


I 90: Watershed and River Edge Restoration Opportunity: Slide 5



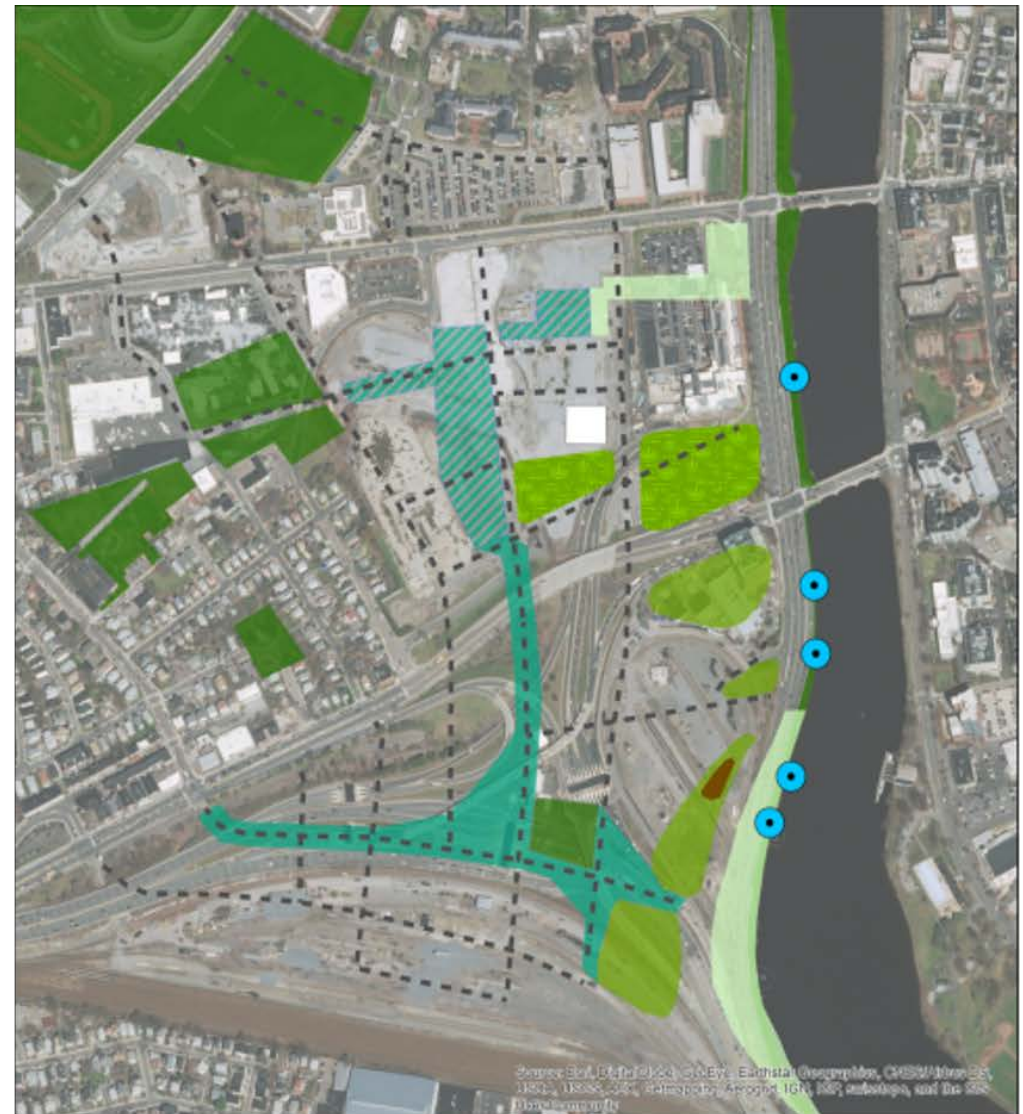
Source: I-90 and Harvard ERC Green Infrastructure (Blue Cities) Planning Handout, CRWA 2018

I 90: Watershed and River Edge Restoration Opportunity: Slide 6



Greenway Plan Development – Changes Since IMP

- Science & Engineering Complex designed, allowing for significant interim landscape.
- Thermal utilities moved to street right-of-way to protect plantings
- Connection points along Cambridge Street understood for three through streets (per DOT).
- Major open space along the riverfront planned (per DOT).
- Building program for first phase of the ERC is formulated by the University.



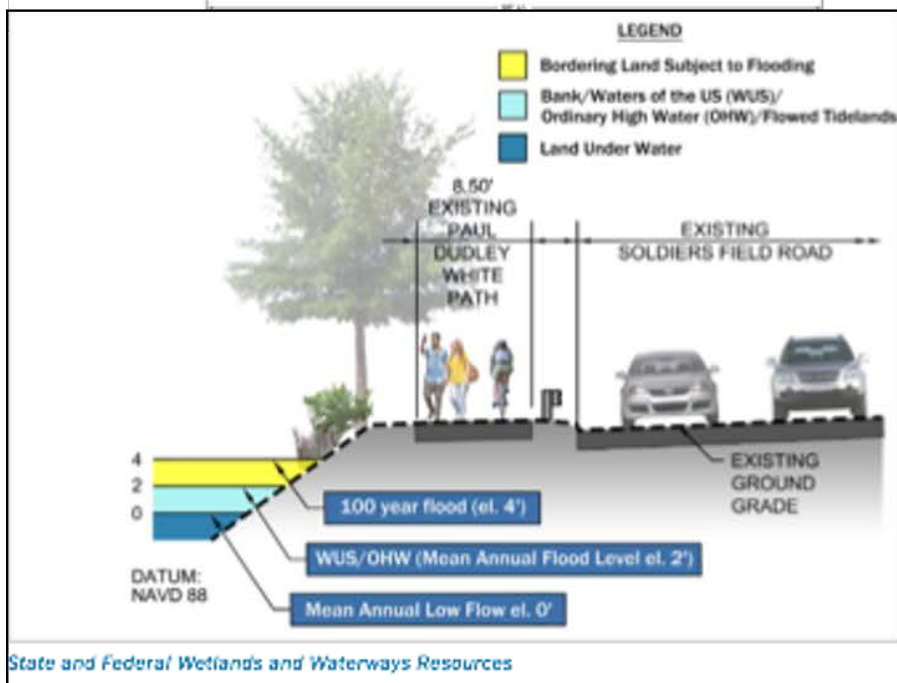
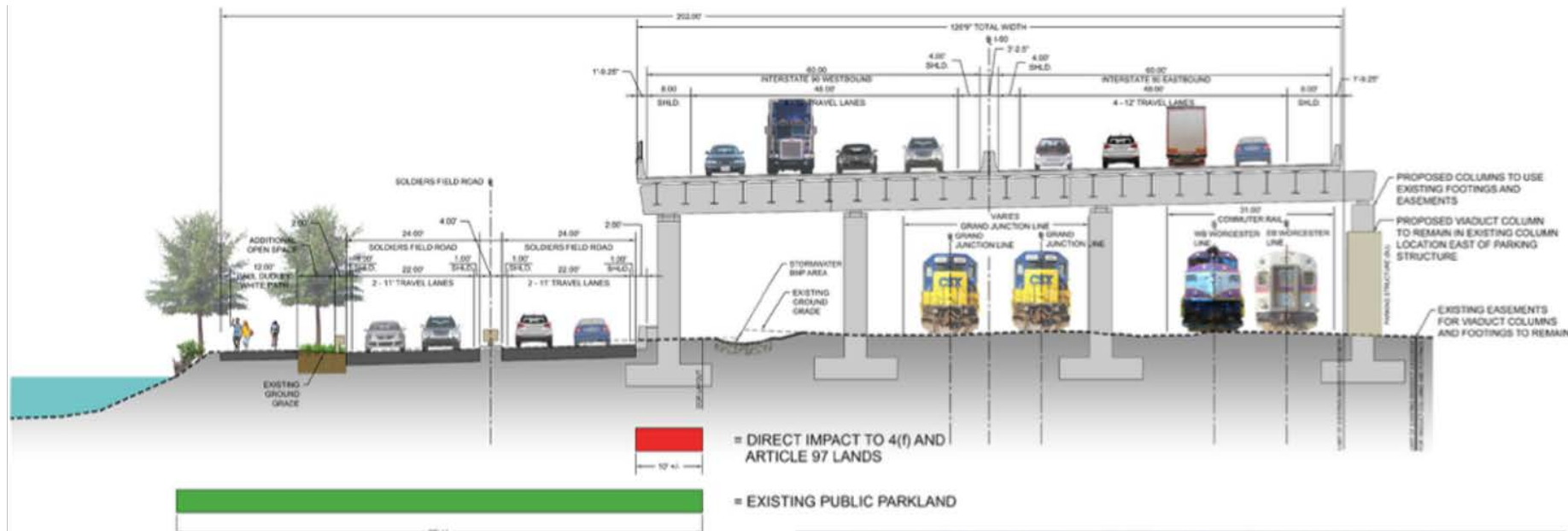
I 90: Watershed and River Edge Restoration Opportunity: Slide 7



Source: Connect
Kendall Square
Framework Plan, RBA
team, 2016



I 90: Watershed and River Edge Restoration Opportunity: Slide 8



Source: MassDOT I-90 DEIR (2017)

I 90: Watershed and River Edge Restoration Opportunity: Slide 9

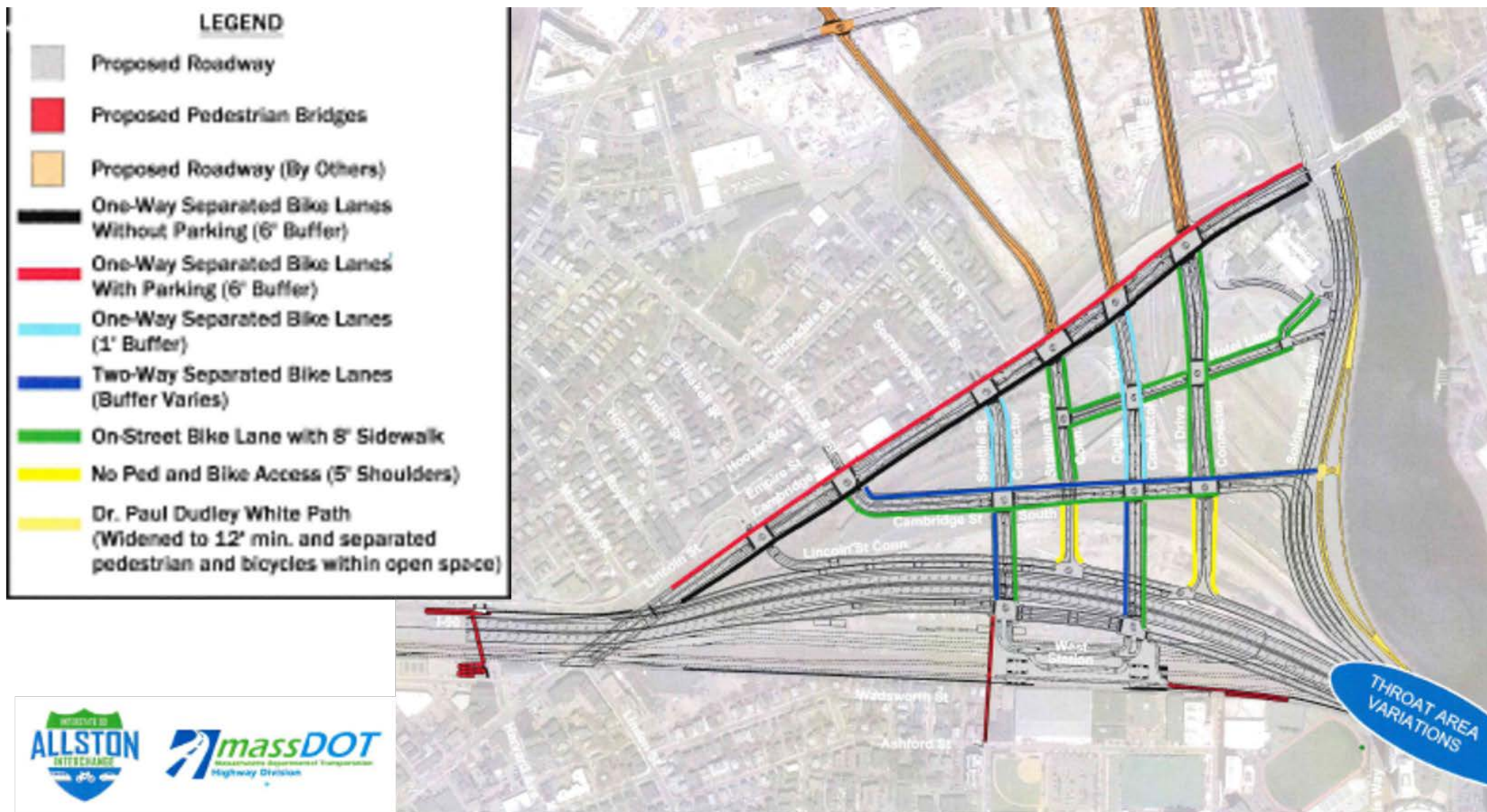


Stormwater runoff from roads carries trash and other pollutants into the Charles River through pipes (above) and culverts (right).



Source: Charles River Watershed Association, Walk Boston, Charles River Conservancy
I-90 Site Walk 2018

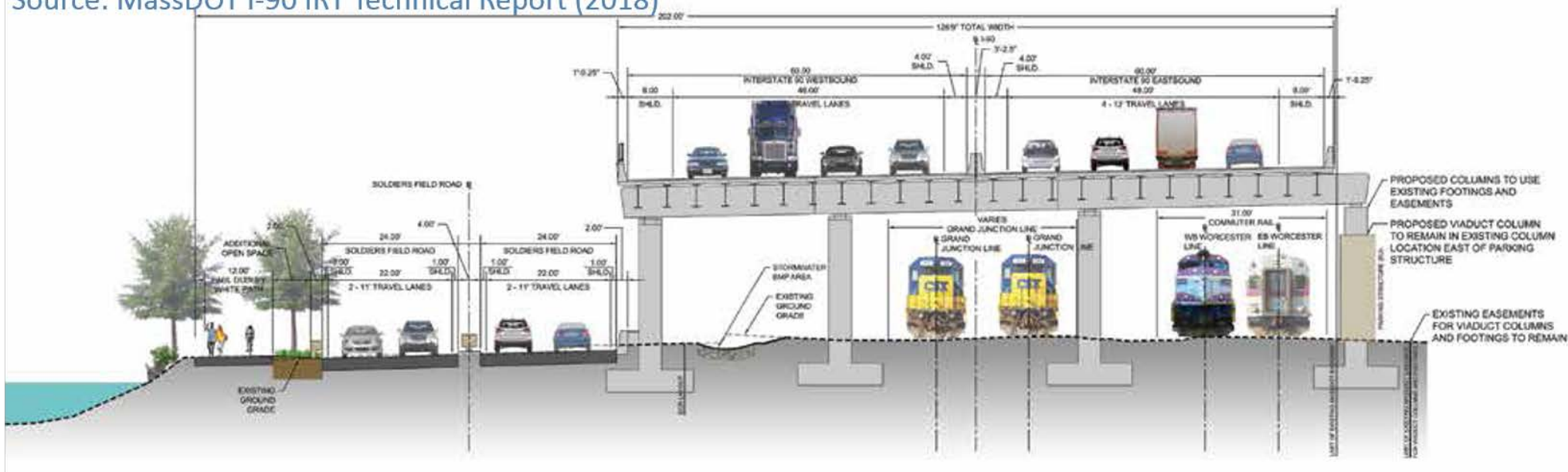
I 90: Watershed and River Edge Restoration Opportunity: Slide 10



Source: MassDOT I90 TF Handout (Oct 2018)

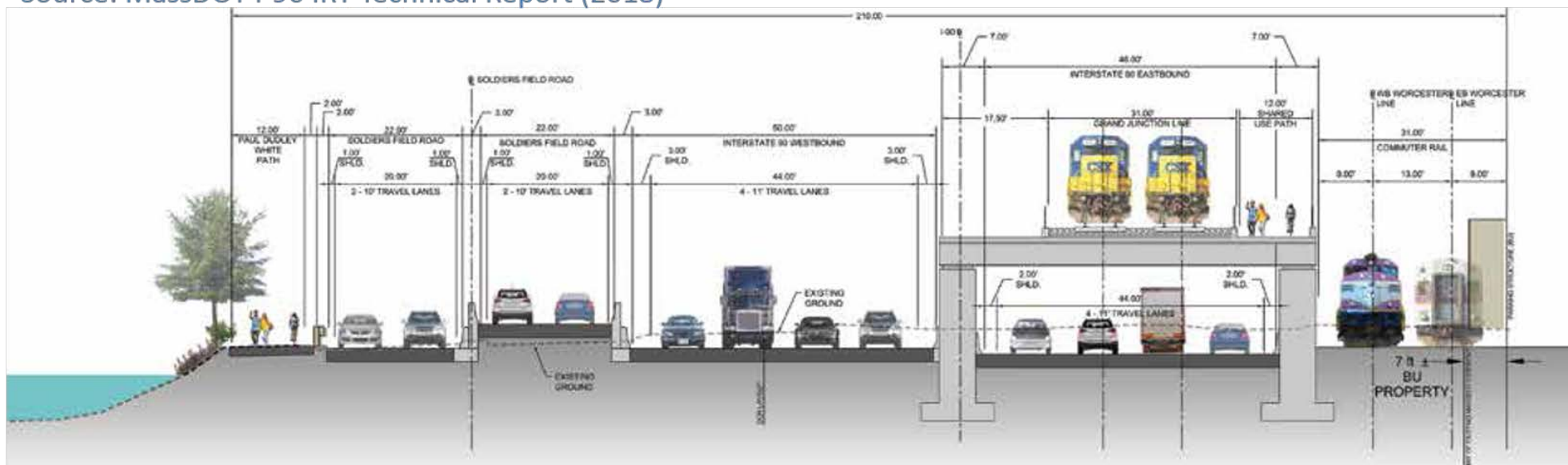
I 90: Watershed and River Edge Restoration Opportunity: Slide 11

Source: MassDOT I-90 IRT Technical Report (2018)



I 90: Watershed and River Edge Restoration Opportunity: Slide 12

Source: MassDOT I-90 IRT Technical Report (2018)



I 90: Watershed and River Edge Restoration Opportunity: Slide 13



MSRT 5-4: Cutting aerial of Soldiers Field Road, Charles River and Project Area



I 90: Watershed and River Edge Restoration Opportunity: Slide 14



Olympic park wetlands, London



Bayou Sauvage Wildlife Refuge - New Orleans, Louisiana
August 20, 2009
Install



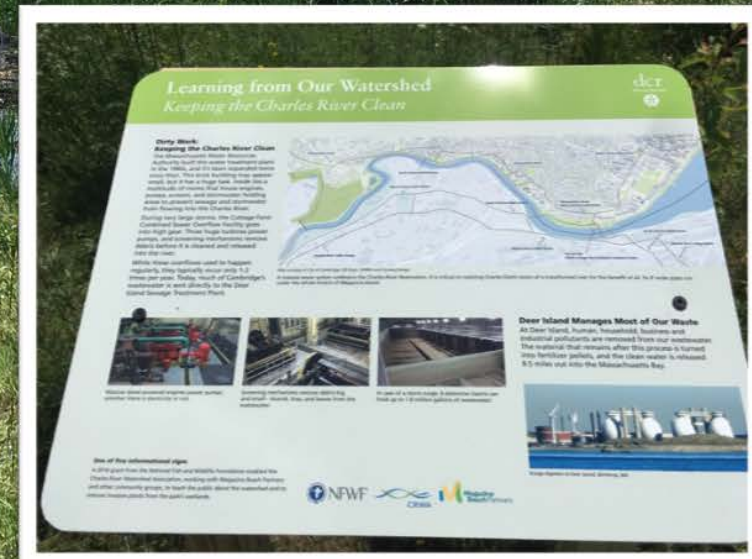
I 90: Watershed and River Edge Restoration Opportunity: Slide 15

Source: Cambridge Water Department Drainage & Community Garden Improvements Project



I 90: Watershed and River Edge Restoration Opportunity: Slide 16

Source: Magazine Beach Restoration Project, Cambridge, MA





I 90: Watershed and River Edge Restoration Opportunity: Slide 17

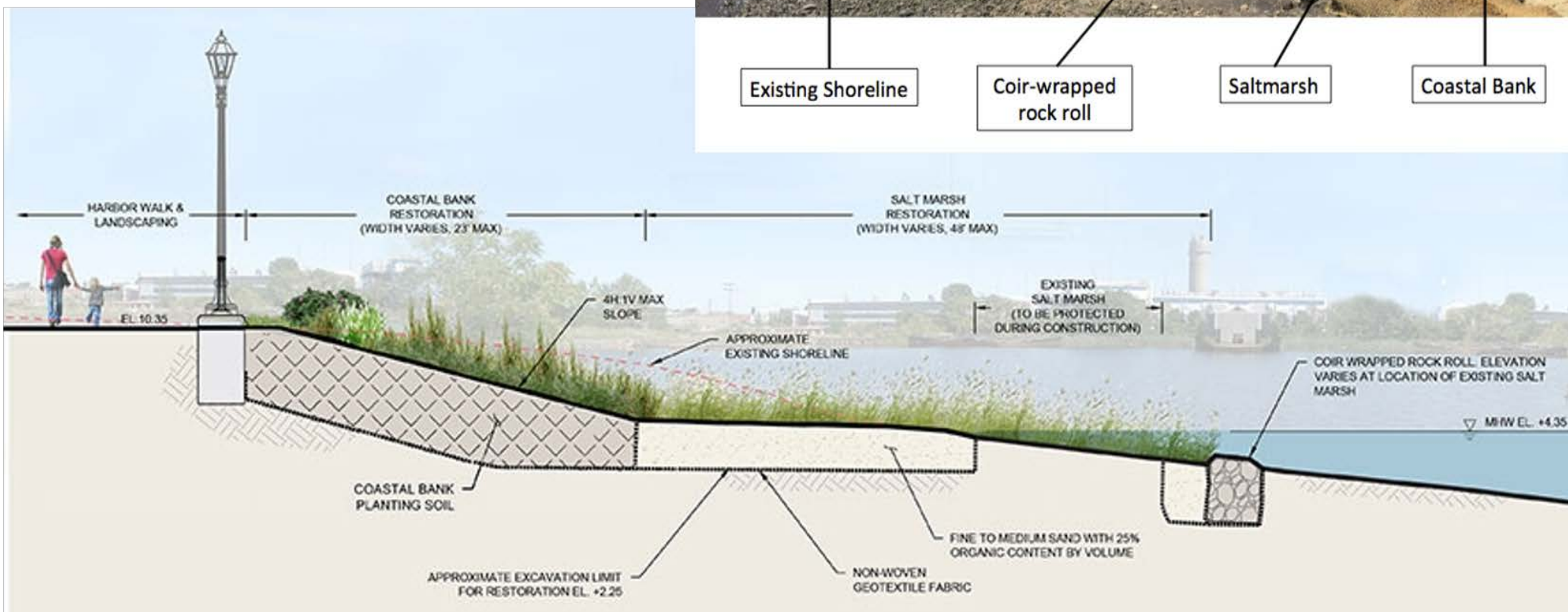
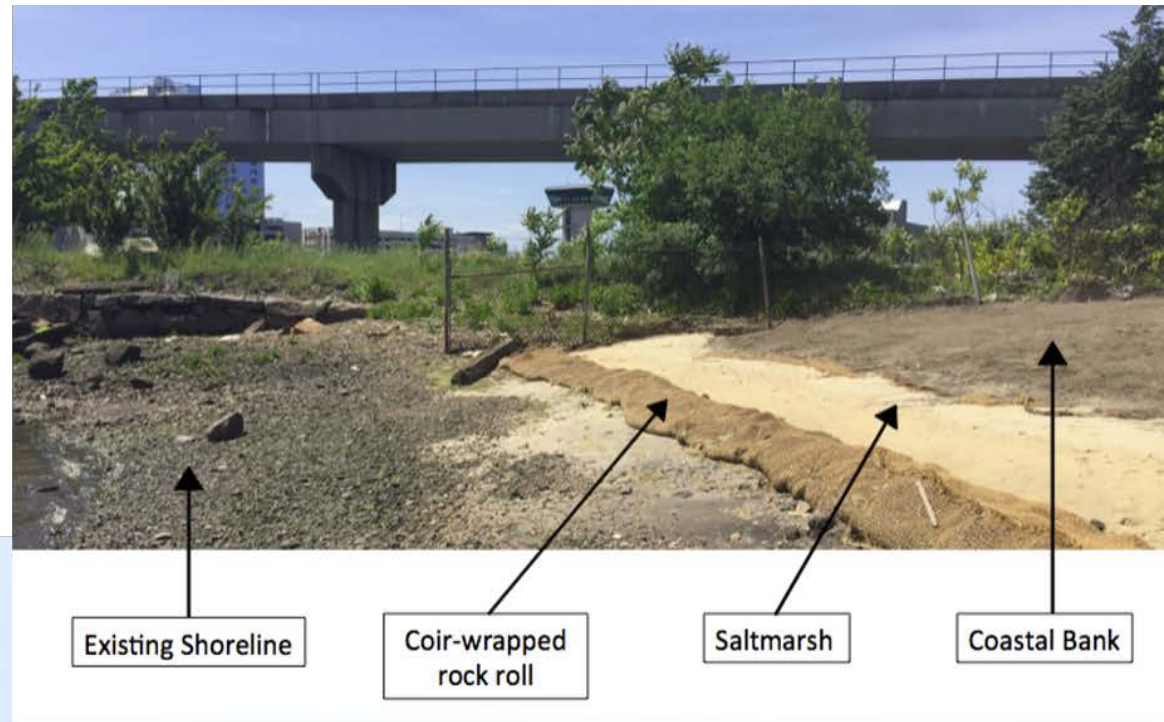


Source: Encore Resort, Everett, MA



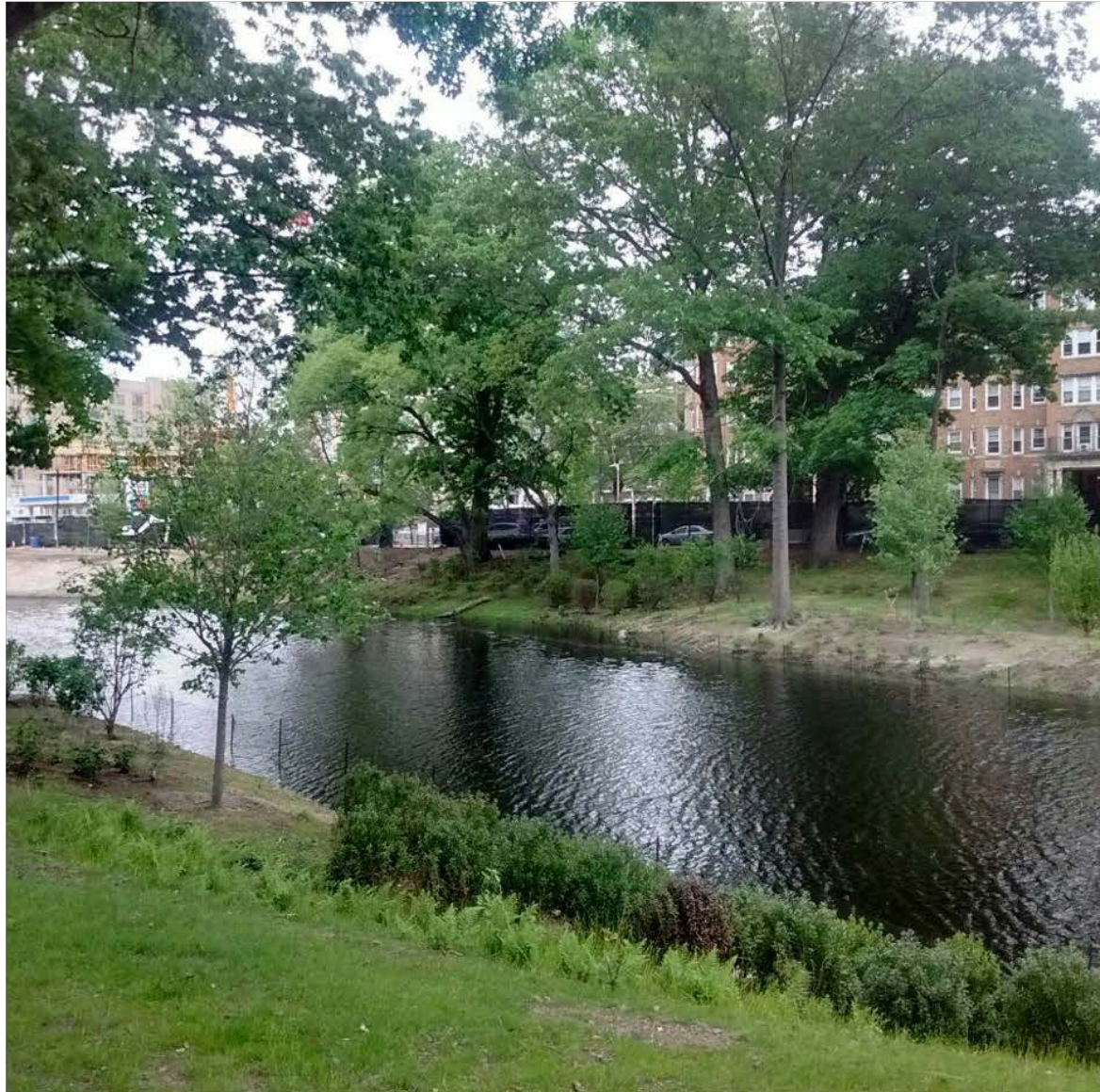
I 90: Watershed and River Edge Restoration Opportunity: Slide 18

Source: Encore Resort, Everett, MA



I 90: Watershed and River Edge Restoration Opportunity: Slide 19

Source: Muddy River Restoration, Boston, MA



I 90: Watershed and River Edge Restoration Opportunity: Slide 20

Source: North Shore Riverfront Ecosystem Restoration Project Pittsburgh, Pennsylvania

