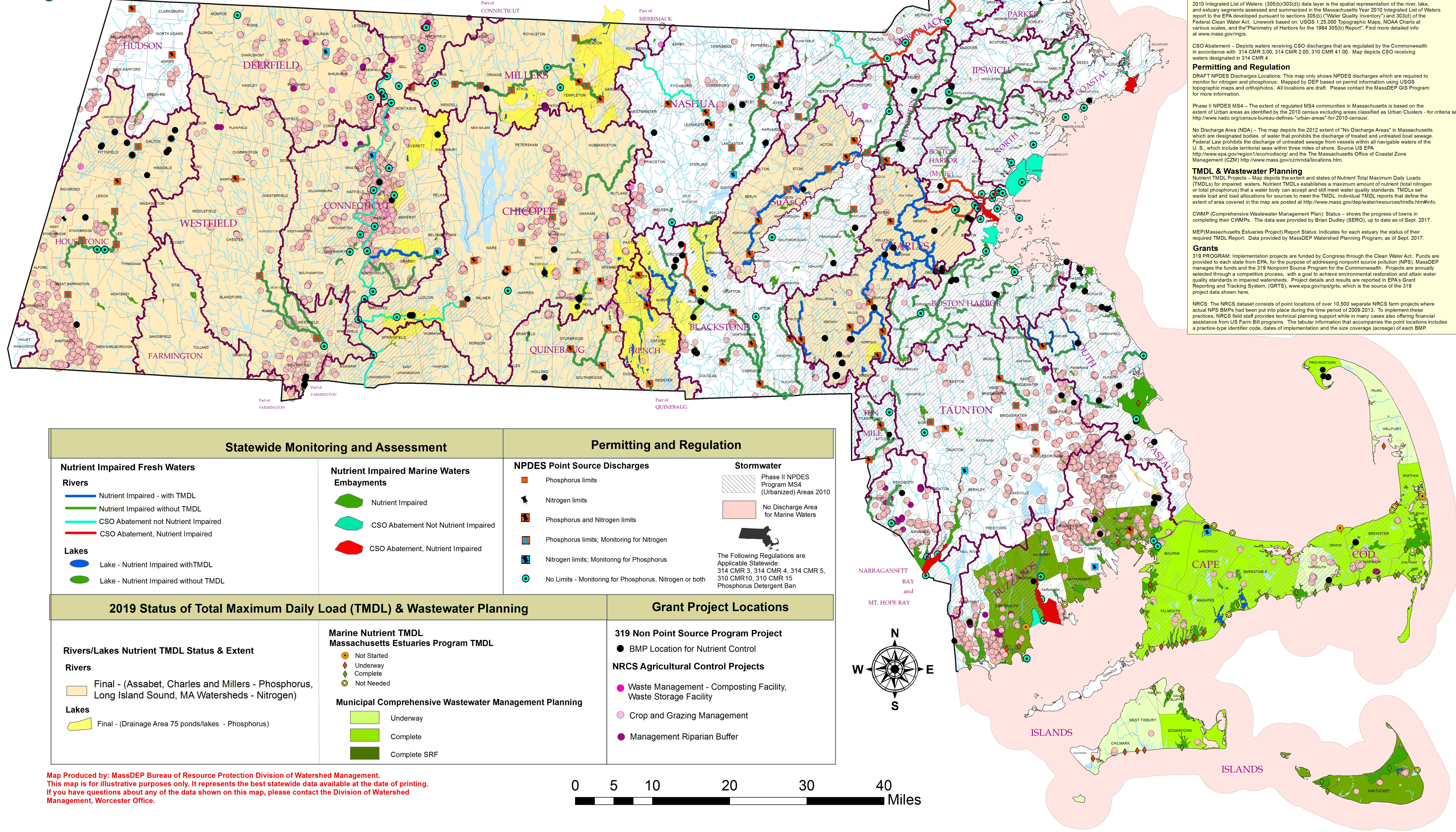


MASSACHUSETTS NUTRIENT MANAGEMENT 2019



Data Sources

Physical and Administrative

HYDROGRAPHY: USGS/MassGIS, 1:25,000 or less. Hydrography from the USGS National Hydrography Database except within public watersupply watersheds where the resolution is approximately 1:10,000.

DRAINAGE BASINS: USGS WRD/MassGIS/MA DEP DWP, 1:24,000. MassGIS digitized mylar manuscripts with subbasins, interpreted by USGS WRD and compiled onto paper 1:24,000 USGS topographic quad maps. Major basins were generated by aggregating sub-basins.

POLITICAL BOUNDARIES: MassGIS. This political boundary datalayer has been created from latitude and longitude coordinates found in the 68 volume harbor and Lands Commission Town Boundary Atlas.

Monitoring and Assessment

2010 Integrated List of Waters: (305(b)/303(d)) data layer is the spatial representation of the river, lake, and estuary segments assessed and summarized in the Massachusetts Year 2010 Integrated List of Waters report to the EPA developed pursuant to sections 305(b) ("Water Quality Inventory") and 303(d) of the Federal Clean Water Act. Line work based on: USGS 1:25,000 Topographic Maps, NOAA Charts at various scales, and the "Planimetry of Harbors for the 1984 305(b) Report". Find more detailed info at www.mass.gov/rmgis.

CSO Abatement -- Depicts waters receiving CSO discharges that are regulated by the Commonwealth in accordance with 314 CMR 3.00, 314 CMR 2.00, 310 CMR 41.00. Map depicts CSO receiving waters designated in 314 CMR 4.

Permitting and Regulation

DRAFT NPDES Discharges Locations: This map only shows NPDES discharges which are required to monitor for nitrogen and phosphorus. Mapped by DEP based on permit information using USGS topographic maps and orthophotos. All locations are draft. Please contact the MassDEP GIS Program for more information.

Phase II NPDES MS4 -- The extent of regulated MS4 communities in Massachusetts is based on the extent of Urban areas as identified by the 2010 census excluding areas classified as Urban Clusters - for criteria see <http://www.nado.org/census-bureau-defines-urban-areas-for-2010-census/>.

No Discharge Area (NDA) -- The map depicts the 2012 extent of "No Discharge Areas" in Massachusetts which are designated bodies of water that prohibits the discharge of treated and untreated boat sewage. Federal Law prohibits the discharge of untreated sewage from vessels within all navigable waters of the U. S., which include territorial seas within three miles of shore. Source US EPA <http://www.epa.gov/region1/eco/ndisgr/> and The Massachusetts Office of Coastal Zone Management (CZM) <http://www.mass.gov/czm/nda/locations.htm>.

TMDL & Wastewater Planning

Nutrient TMDL Projects -- Map depicts the extent and states of Nutrient Total Maximum Daily Loads (TMDLs) for impaired waters. Nutrient TMDLs establishes a maximum amount of nutrient (total nitrogen or total phosphorus) that a water body can accept and still meet water quality standards. TMDLs set waste load and load allocations for sources to meet the TMDL. Individual TMDL reports that define the extent of area covered in the map are posted at <http://www.mass.gov/dep/water/resources/tmdls.htm#info>.

CWMP (Comprehensive Wastewater Management Plan): Status -- shows the progress of towns in completing their CWMPs. The data was provided by Brian Dudley (SERO), up to date as of Sept. 2017.

MEP (Massachusetts Estuaries Project) Report Status: Indicates for each estuary the status of their required TMDL Report. Data provided by MassDEP Watershed Planning Program, as of Sept. 2017.

Grants

319 PROGRAM: Implementation projects are funded by Congress through the Clean Water Act. Funds are provided to each state from EPA, for the purpose of addressing nonpoint source pollution (NPS). MassDEP manages the funds and the 319 Nonpoint Source Program for the Commonwealth. Projects are annually selected through a competitive process, with a goal to achieve environmental restoration and attain water quality standards in impaired watersheds. Project details and results are reported in EPA's Grant Reporting and Tracking System, (GRTS), www.epa.gov/nps/grts, which is the source of the 319 project data shown here.

NRCS: The NRCS dataset consists of point locations of over 10,500 separate NRCS farm projects where actual NPS BMPs had been put into place during the time period of 2009-2013. To implement these practices, NRCS field staff provides technical planning support while in many cases also offering financial assistance from US Farm Bill programs. The tabular information that accompanies the point locations includes a practice-type identifier code, dates of implementation and the size coverage (acreage) of each BMP.

Statewide Monitoring and Assessment		Permitting and Regulation	
Nutrient Impaired Fresh Waters Rivers — Nutrient Impaired - with TMDL — Nutrient Impaired without TMDL — CSO Abatement not Nutrient Impaired — CSO Abatement, Nutrient Impaired Lakes ● Lake - Nutrient Impaired with TMDL ● Lake - Nutrient Impaired without TMDL	Nutrient Impaired Marine Waters Embayments ● Nutrient Impaired ● CSO Abatement Not Nutrient Impaired ● CSO Abatement, Nutrient Impaired	NPDES Point Source Discharges ■ Phosphorus limits ▲ Nitrogen limits ■ Phosphorus and Nitrogen limits ■ Phosphorus limits; Monitoring for Nitrogen ■ Nitrogen limits; Monitoring for Phosphorus ● No Limits - Monitoring for Phosphorus, Nitrogen or both	Stormwater ■ Phase II NPDES Program MS4 (Urbanized) Areas 2010 ■ No Discharge Area for Marine Waters The Following Regulations are Applicable Statewide: 314 CMR 3, 314 CMR 4, 314 CMR 5, 310 CMR 10, 310 CMR 15 Phosphorus Detergent Ban
2019 Status of Total Maximum Daily Load (TMDL) & Wastewater Planning		Grant Project Locations	
Rivers/Lakes Nutrient TMDL Status & Extent Rivers ■ Final - (Assabet, Charles and Millers - Phosphorus, Long Island Sound, MA Watersheds - Nitrogen) Lakes ■ Final - (Drainage Area 75 ponds/lakes - Phosphorus)	Marine Nutrient TMDL Massachusetts Estuaries Program TMDL ● Not Started ● Underway ● Complete ● Not Needed Municipal Comprehensive Wastewater Management Planning ■ Underway ■ Complete ■ Complete SRF	319 Non Point Source Program Project ● BMP Location for Nutrient Control NRCS Agricultural Control Projects ● Waste Management - Composting Facility, Waste Storage Facility ● Crop and Grazing Management ● Management Riparian Buffer	

