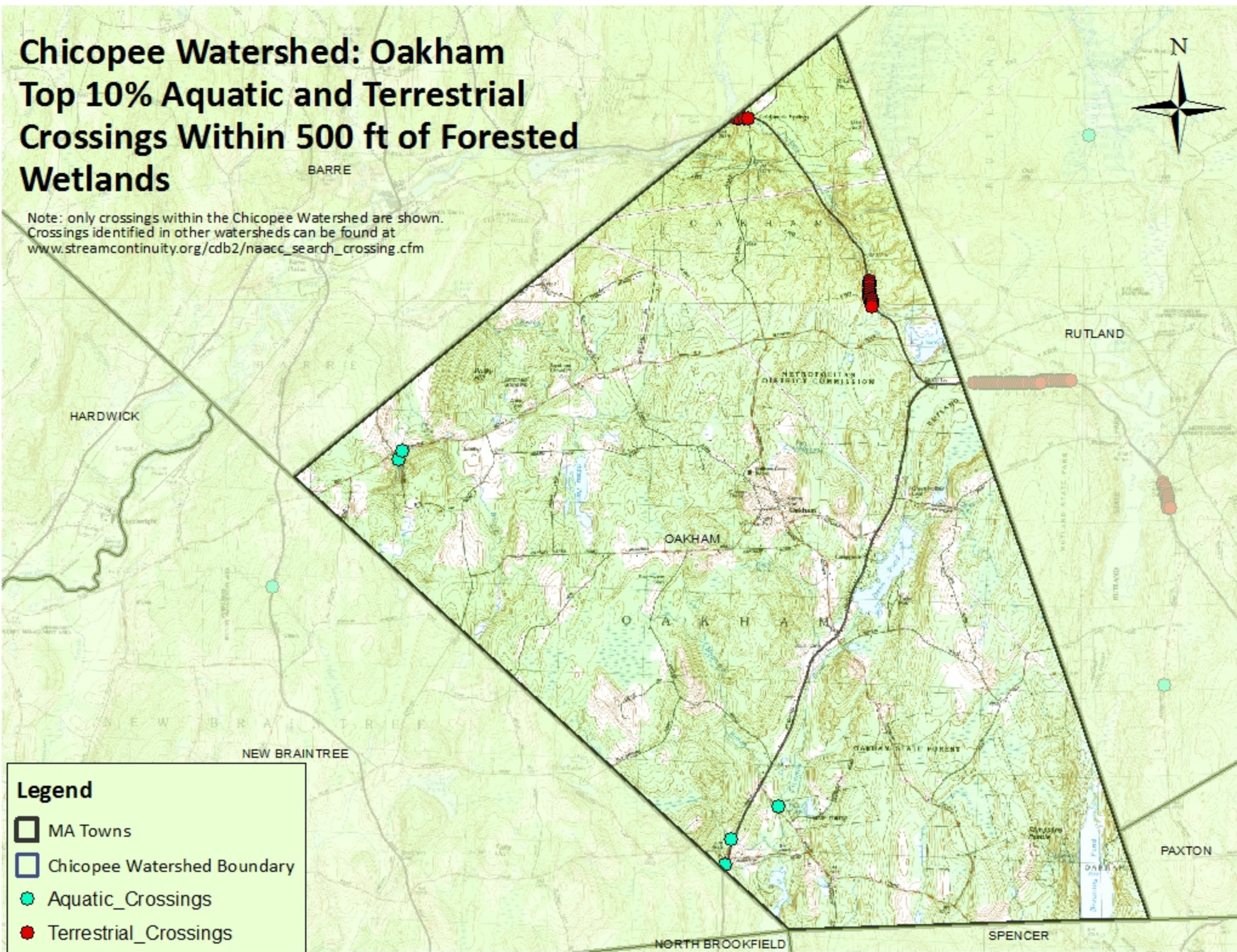


Chicopee Watershed: Oakham Top 10% Aquatic and Terrestrial Crossings Within 500 ft of Forested Wetlands

Note: only crossings within the Chicopee Watershed are shown.
Crossings identified in other watersheds can be found at
www.streamcontinuity.org/cdb2/naacc_search_crossing_cfm



Legend

- MA Towns
- Chicopee Watershed Boundary
- Aquatic_Crossings
- Terrestrial_Crossings