

3.6 | Proposed Site Furnishings

Standard Site Furnishings and Amenities

The proposed site furnishings for Herter Park rely on an already established standard palette consistent with the other parks of the Charles River Reservation. These standard furnishings provide a recognizable image, unified look, and simplicity in the maintenance and replacement, and include:

- Benches
- Picnic tables
- Litter receptacles
- Bicycle racks
- Drinking fountains
- Shade structures
- Wood decking for boardwalks & fishing docks

Standard Signage and Wayfinding elements are discussed in the following chapter.

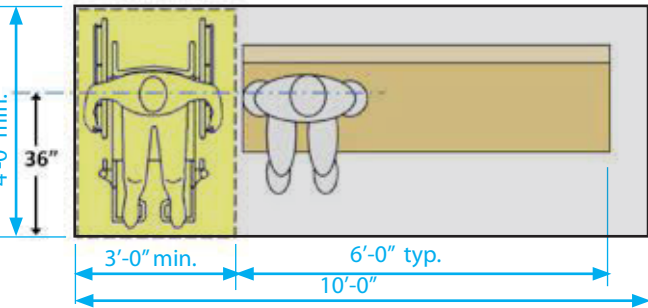


Shurcliff Bench

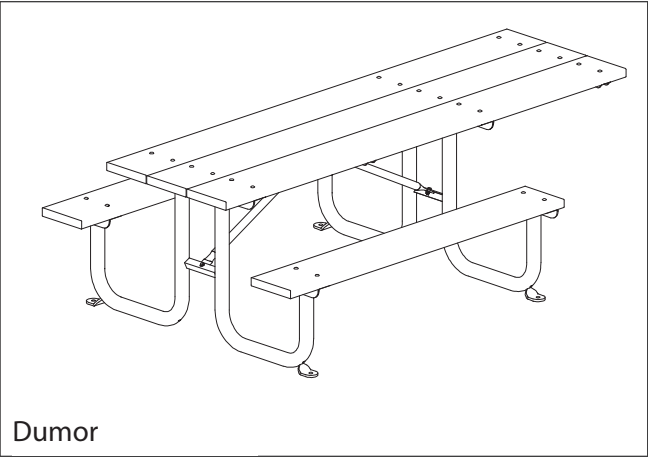
The historic Shurcliff bench was named for Arthur Shurcliff, the celebrated landscape architect and a protégé of Frederick Law Olmsted.

Model CFPB-010-01, 6' Shurcliff Bench with back as manufactured by Custom Fabrication Inc. 607-693-3223, www.customfabricationinc.com.

- Slats: 2" x 6" (nominal) vertical grain Douglas Fir with 1/8" radius at all edges. Five (5) per bench. Painted, color "Federal Green 14062".
- Frame shall be 1-1/2" x 6" steel bar support
- Steel members shall be primed with a zinc-rich epoxy, then finished with a baked on polyester powder coating. Color "Black Matte".
- Galvanized 1/2" x 3 3/4" expansion anchor bolts.
- Installed on a concrete pad, providing 3'-wide min. companion seating on one side.
- Armrests are currently not an available option for the standard Shurcliff Bench. Design modification of the bench to add armrests is recommended for inclusive design.



Bench pad plan



Picnic Table

Model 77-68-1D Accessible Table as manufactured by Dumor Inc. (800) 598-4018, www.dumor.com.

- Slats shall be Douglass Fir
- All steel members shall be primed with a zinc-rich epoxy, then finished with polyester powder coating. Color shall be Black.
- 1/2" x 3 3/4" expansion anchors.
- Installed on concrete pad that provides 4' clear on all four sides of the table.



Litter Receptacle

Model 157 Receptacle as manufactured by Dumor Inc. (800) 598-4018, www.dumor.com.

- All steel members shall be primed with a zinc-rich epoxy, then finished with polyester powder coating. Color shall be Black.
- 1/2" x 3 3/4" expansion anchors.
- Installed on a concrete pad.



Bicycle Rack

Model Swerve Rack as manufactured by Dero Bike Rack Co. 1-888-337-6729, www.dero.com.

- Galvanized steel.
- Surface mounting on concrete base.
- Tamper-resistant hardware.



Drinking Fountain

Model 10145 SM or SMSS Accessible Drinking Fountain with Bottle Filler, as manufactured by Most Dependable Fountains, Inc. 901-867-0039, www.mostdependable.com.

- Oven baked powder coat. Color shall be Black.
- Surface mounting on concrete base.
- Tamper-resistant hardware.
- Optional pet fountain



Magazine Beach Park. Photo credit: DCR.

Shade Structure

Model Multi Shade Walk, as manufactured by Shade Systems Inc. 800-609-6066, shadesystemsinc.com.

- Steel frame, primed and powder-coated.
- Knitted HDPE fabric
- Stainless steel cable around perimeter of shade
- Posts embedded into reinforced concrete footings



Watertown Charles River fishing dock -
Photo credit: Wikimedia Commons.

Wood Decking for Boardwalks and Fishing Dock

Ipe Decking with of without railings.

- Pressure-treated structure
- Helical piles foundation system

Additional Elements

Furnishing elements that do not have standard counterparts may be considered in the future on a project-by project basis; relevant examples for other are shown.

- Screen structure
- Fencing for community gardens
- Unique nature-play element



Farnham-Connolly State Park

Custom Screen Structure

The structure shall be custom designed and fabricated to provide an enclosure for 1 or 2 portable toilet units, or for a dumpster.

- Steel or wood structure
- Ipe (or another tropical hardwood) slats



Fresh Pond Reservation Community Garden
Photo credit: mobile.twitter.com/nearinghelen.

Fencing for Community Gardens

The proposed fencing is a combination of wood and metal mesh

- Wood posts and gate frames
- Metal top and bottom rails
- Metal mesh panels



Esplanade Play Space

Unique Nature-Play Element

Nature-based play element can be a focal point.

- Allston artist Mitch Ryerson is renowned for wood sculptural play elements.

3.7 | Signage and Wayfinding Improvements

What is Wayfinding?

Wayfinding is a system of signage that orients and directs users, allowing visitors to navigate defined areas more easily. These networks include informational, directional, identification, and interpretive signage that are intuitive, unified, and easy to understand—helping people of all ages and abilities experience a place. Wayfinding systems take into consideration the needs of the audience, and also help define and enhance the character of a community.

Signage that is both well-designed and well-placed creates a sense of visual harmony. It also:

- Allows visitors to find their way
- Links areas, amenities, possible uses, and various spaces clearly
- Encourages a pedestrian-friendly ethos
- Enhances the identity of a community

The Signage and Wayfinding portion of the Herter Master Plan was initiated with a full inventory of the current state of signage at the park. The General Conditions Overview defining the general issues found at the park, was included in *Chapter 2.6: Visitor Experience and Wayfinding*.

Signage and Wayfinding System Goals

The signage and wayfinding goal for Herter Park is to create a coherent system that is based upon the DCR Graphic Standards Manual, with site-specific refinements, and organized around the following objectives:

1. Approaching and Announcing: Lead Visitors Into the Park with Ease

Develop a sign system that coordinates with DCR requirements, identifies the park, and leads visitors into the park, clearly marking the various entrances into the park.

2. Orienting and Directing: Assist Visitors to Find Their Way

Help newcomers understand what and where the amenities in the park are, and overall, create clear guide markers on how to navigate the park and all its amenities.

3. Discovering and Inspiring: Help Visitors Discover All That the Park Has to Offer

Complement Herter Park’s unique and beautiful character, the history of the park, and natural assets through interpretive signage, which informs and inspires.

General Recommendations

- Align signage requirements to *DCR Graphic Standards Manual*
- Improve access to the park
- Create a clear framework for better wayfinding
- Complement Herter Park’s unique and beautiful character, as well as the history of the park
- Develop a system reflecting an organized, visual clarity
- Increase awareness of, and access to, park amenities
- Celebrate Herter Park’s physical assets, including the Herter Center, the Herter Park Amphitheater, and the Artesani Playground
- Celebrate special events, including the Head of the Charles Regatta and Amphitheater performances.
- Comply with ADA standards. In the absence of DCR-developed accessible standards, DCR requests the use of current best practices reflected in the Smithsonian Guidelines for Accessible Exhibition Design. <https://www.sifacilities.si.edu/sites/default/files/Files/Accessibility/accessible-exhibition-design1.pdf>

Additional Considerations

This plan adheres closely to the *DCR Graphic Standards Manual*. In terms of final fabrication, please reference the *DCR Sign Standards: Structural and Material Standards* in conjunction with the DCR Sign Shop. In the future, based on discussions, there are opportunities to further develop the DCR brand. Some suggestions might include:

- Incorporating the current DCR logo (the leaf) more boldly into the overall graphic guidelines; it is a strong mark and could help to define the brand and identity of DCR.
- More consistent use of Frutiger typeface throughout, including as a replacement for serif italic.
- Develop a graphic system that speaks to the breadth and depth of the DCR Park system, including a more comprehensive and expressive visual language and color palette.
- If there are any areas or amenities that are “private” and not for public access – the signage or additional signage should note that.

Main Entrance Identification Signage

Recommendations

Currently, there is no signage clearly marking Christian A. Herter Park. The intention is to identify the park and identify your arrival through the use of the DCR Main Entrance Identification Signage. Proposed locations are the intersection of Soldiers Field Road and the Elliot Bridge, as well as at the main arrival / the Artesani Parking Lot (Parking Lot 4). The sign layout below follows the *DCR Graphic Standards Manual*.

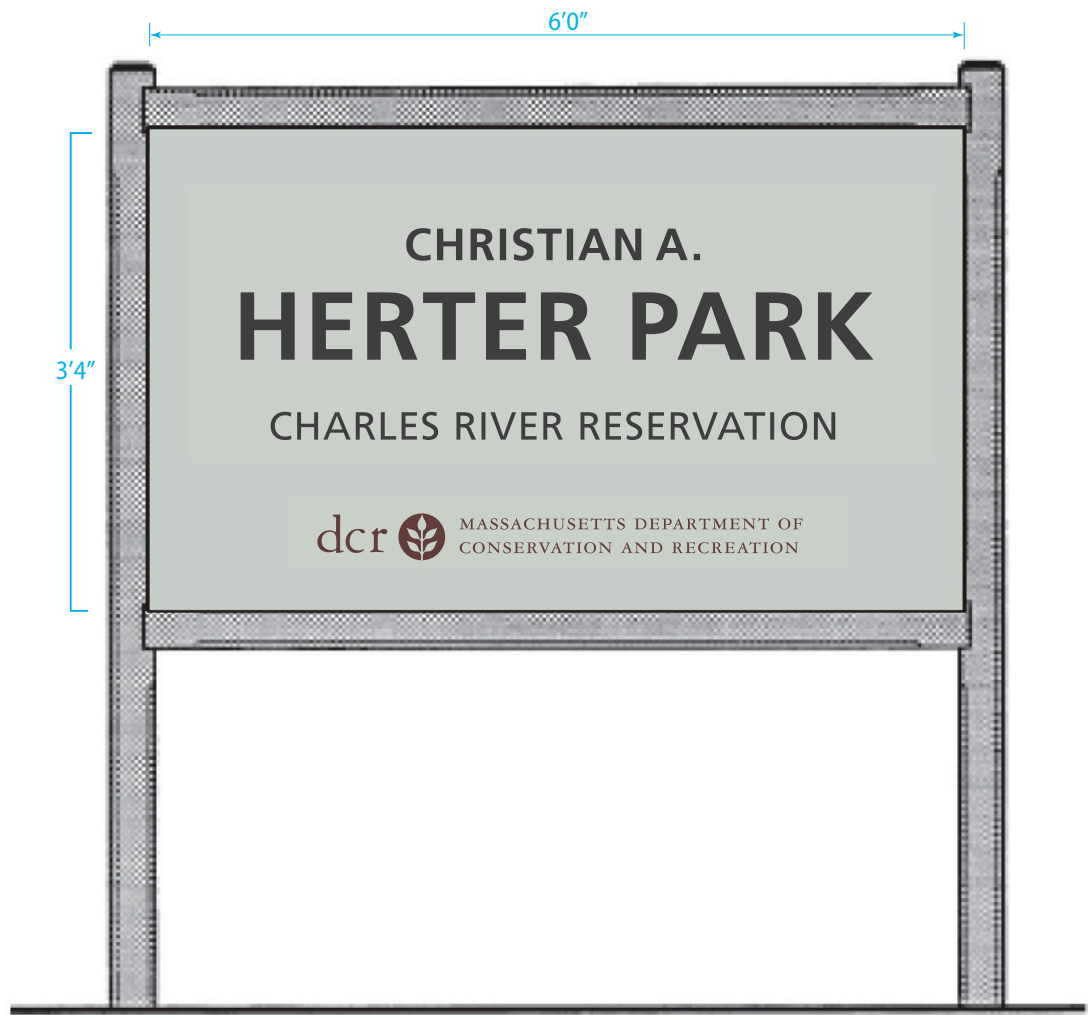


Figure 3-37. Example of Main Entrance identification signage layout for Herter Park.

Parking Lot Signage

Recommendations

The Parking Lot signage currently follows an inconsistent template and placement, often stacked as part of cluster signage. With that, the entrance ways are not clearly marked. The recommendation is to use the DCR Cantilevered Identification Sign to identify the Parking Lot entrance ways. Per the *DCR Graphic Standards Manual*, the Cantilevered Identification Sign marks vehicular entrances to sites, reservations, and reservoirs, where the “entering” and “leaving” designations are important.



Figure 3-38. (Top left) Examples of current Parking Lot Identification signage at Herter Park. (Bottom left) Mockup of DCR cantilevered parking sign. (Right) Example of Parking Identification sign utilizing DCR Cantilevered sign structure.

Facility Identification Signage

Recommendations

The main facilities, including the Amphitheater, Artesani Playground Wading Pool and Spray Deck, the Herter Center, and the Public Boat Rental, should all be identified through signage. Currently, there is only one example of facility signage at the park, specifically identifying the Artesani Playground. The recommendation is to use the DCR Cantilevered Identification Sign to identify all facilities within Herter Park.

The larger facility identification sign that identifies Artesani Playground does not follow the *DCR Graphic Standards Manual*. To be consistent with other facilities throughout the park, the current Artesani Playground sign will be replaced with the cantilevered sign.



Figure 3-39. (Right) Existing Artesani Playground Facility Identification Sign. (Left) Example of Cantilevered sign as Facility Identification signage identifying facilities throughout the park.

Welcome Wayside/Orientation Signage

Recommendations

There is no Welcome Wayside/Orientation Signage at Herter Park, and with that, the many amenities at the park are easily missed by visitors. By adding either two or three-sided Welcome Wayside/Orientation Signage at all parking lot entrance ways, visitors will easily be able to understand what the park has to offer.

The sign’s purpose is to orient the visitor to the park or property. It is meant to be a self-directed, outdoor, four-season sign that draws visitors to it before they begin their visit. It is expected to have a long lifespan, so information on it should be as timeless as possible. The current DCR requirement for Welcome Wayside/Orientation Signage consists of (at least) two panels: one panel will contain a location map of the park and information about the park’s natural, cultural and historic features. It will also suggest the type of recreation use that is encouraged at the park, as well as safety and regulatory information. The other panel will have a map of the system of DCR parks in the general locality and information about that system; this will be common to other parks in the locality. The message should be illustrated and made more attractive with photos and drawings. A new addition to these signs is to include an iconographic system clearly stating the most important Do’s and Don’ts of the park.

Welcome Wayside/Orientation signage should comply with ADA standards. In the absence of DCR-developed accessible standards, DCR UA requests the use of current best practices reflected in the Smithsonian Guidelines for Accessible Exhibition Design. Specific to the Welcome Wayside layout is ensuring a clear information hierarchy, making the map visually accessible to visitors using a wheelchair, and placing the printed visitor guidelines in the lower third for accessibility. The text, images, and icons can remain in higher places if the size is visually accessible to a visitor in a seated position. The following statement must be included per DCR Legal: “All visitors are responsible for the knowledge of and compliance with park regulations 302 CMR 12.00 which are available on the DCR website.”



Figure 3-40. DCR precedent of 3-sided signage at the MBTA Forest Hills Station.

Welcome Wayside/Orientation Signage: Initial Suggested Layout (2 vs. 3-sided)

Concept for 2-sided Welcome Wayside/Orientation signage

At Herter Park, the 2-sided sign will be used at all entrances – except the main signage at the Artesani Parking Lot, where a 3-sided sign is proposed. One panel will contain a detailed location map of the area around the sign's location, as well as a map of the entire Christian A. Herter Park. The second panel will contain a map of the entire Charles River Reservation as well as information about the park's natural, cultural and historic features.

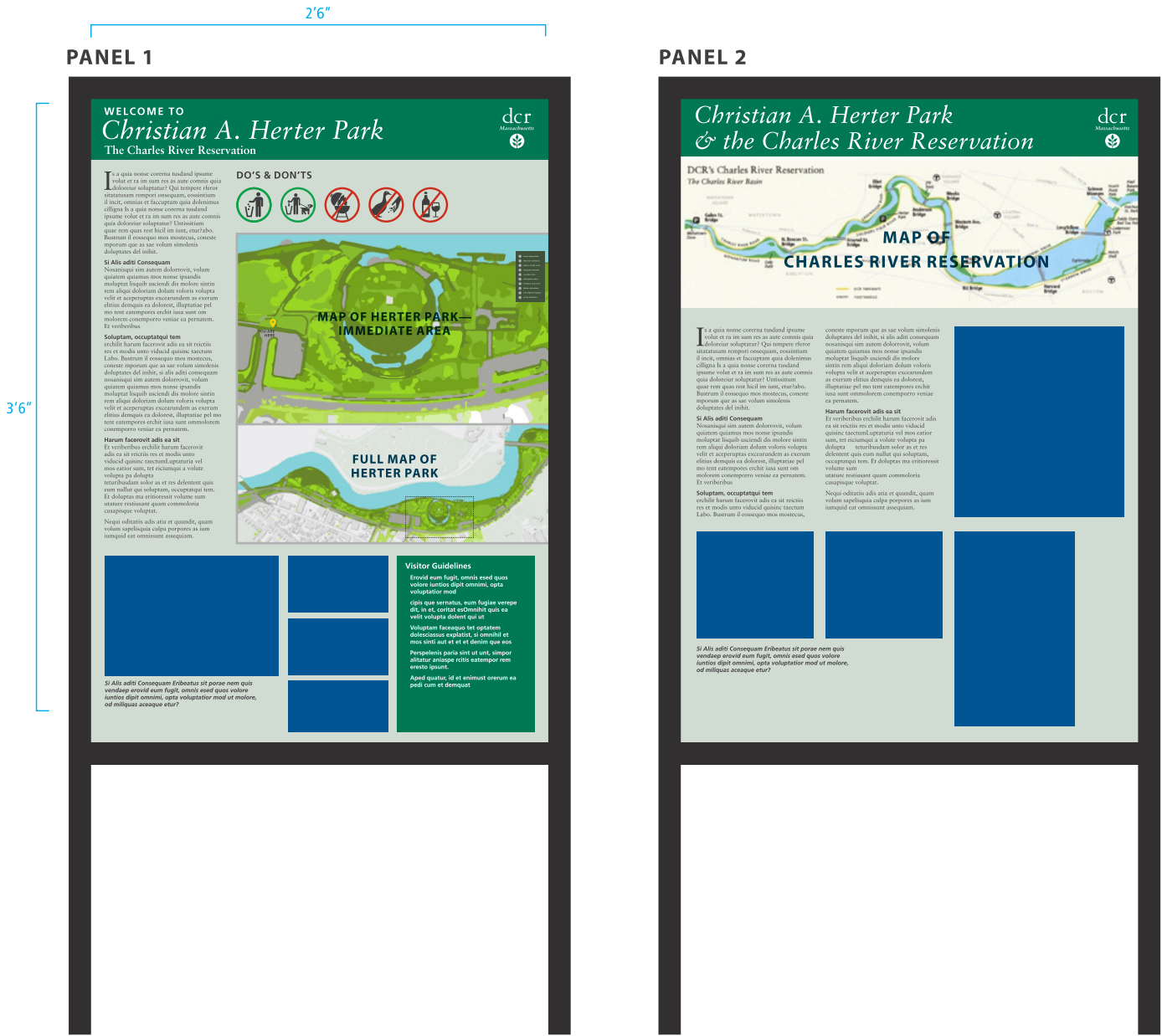


Figure 3-41. (Left to right, this and the following page): Initial design sketches of Welcome Wayside/Orientation Signage. The first two panels would be a part of all instances of the Welcome Wayside/Orientation Signage, while the 3rd panel would be included at the Artesani Parking Lot location only, allowing space for postings.

Concept for 3-sided Welcome Wayside/Orientation signage

At the Artesani Parking Lot location, the 3-sided sign will be used as the Welcome Wayside/Orientation sign; the 3rd panel will allow for public announcements and other posted events. This third panel will be an enclosed bulletin board with magnetic closure. Please contact a fabricator for further details, but the recommendation is to take an existing bulletin board or work with the manufacturer to fabricate a custom-sized bulletin board. Ideally, the door has a magnetic closure so the public can post announcements, with oversight conducted by DCR. With that, an existing bulletin board could be modified to create a magnetic door vs a locked door.

PANEL 3



Most standard bulletin boards include a locked enclosure. The recommendation is that the public can switch out postings, with oversight conducted by DCR. See details below for an option to change out a lock mechanism to a magnetic closure on bulletin board. Fabricator may suggest alternative method, and should confirm these details:

- Custom size bulletin board via Manufacturer. More cost effective if you order more than one.
- Remove locks, fill holes with standard nickel plated snap-in plugs, McMaster 9563K43 or equal (correct size). Add adhesive for permanent installation.
- Install door handle, McMaster 11665A41, or equal.
- Install two McMaster Neodymium Magnets 5862K159 or equal, 10 pound pull rating. Recess magnets in frame as needed, opposite magnets install 24-gauge galvanized steel receptor plates with either permanent epoxy or stainless steel counter-sunk screws. Note 1: door must close completely and engage gasket for seal. Note 2: test pull strength. Door must shut completely, engaging both magnets and be held firmly in place. Must be relatively easy to open. Designer or client is to test pull strength and approve. Contractor is required to change pull strength per designer / client instruction until deemed correct.
- Case is 2" depth, opening in frame is 2.25". install poster case into frame using stainless steel counter-sunk #8 x3/4" screws, minimum of (10) screws evenly spaced around periphery as close to edge as possible, underneath corkboard where possible, tight to the 3/4" MDO backer piece.

DCR Rules & Regulation Iconography

An icon system can clearly communicate the do's & dont's of the park system. In this case, it helps to consolidate the Safety & Rules signage and avoid cluster signage, as seen below. The proposed icons below will be added to the Welcome Wayside/Orientation signage, the DCR consolidated Rules and Safety Information signage, and other instances where clarity is most important. Messaging regarding the use of tree hammocks and drones may be additional rules to highlight in specific locations as needed. Temporary signage may be designed for areas under "revitalization," i.e., woodlands, grass/lawn areas closed during certain events, meadows on a mowing schedule for habitat value, etc.



Figure 3-42. (Top) Example Iconography System. (Bottom) Existing conditions cluster signage. DCR requires a maximum of 2 signs attached to any pole, and so these are all not compliant with DCR standards.

Rules and Regulations Signage

Rules and Regulations signage is a clear indication of what visitors can and cannot do. The recommendation is to be more intentional when posting regulatory signage. This plan includes a variety of ways to communicate rules and regulations including adding iconography on the Welcome Wayside/Orientation signage, utilizing the DCR-specific Rules signage below at all entrances, as well as utilizing standard regulatory signs as needed.

The below DCR consolidated Rules and Safety Information sign should be presented using both symbols and text: the top three or four recommended activities at the park and the most important prohibited activities should be displayed using symbols, as in the illustration below. These signs would be placed at all parking lots and other locations as needed. The following statement must be included per DCR Legal: "All visitors are responsible for the knowledge of and compliance with park regulations 302 CMR 12.00 which are available on the DCR website." QR codes are not to be relied on for regulatory information, but can be used as an additional information resource.



Figure 3-43. Example of DCR consolidated Rules and Regulations Signage to be placed at all parking lots and other locations as needed.

Regulatory Signage

Per the *DCR Signage Graphics Manual*, "Regulatory Signs provide information concerning regulations on vehicle or pedestrian usage within a park. These signs are designed to complement Federal Highway (MUTCD) standards, and should be placed adjacent to roadways and parking areas, where they are clearly visible. There should be no more than two signs mounted on any post."

Generally speaking, rules and regulations signage should be updated as needed, added to when necessary, and follow DCR guidelines throughout the park. Creating a cohesive signage system considering visitors' needs and creating a consistent visual language will allow visitors to experience all that Herter Park has to offer while also understanding what is and isn't allowed at the park.



Figure 3-44. Examples of Rules and Regulation signage per the *DCR Graphic Standards Manual*.

Bicycle & Pedestrian Shared-Use Trail Signage

The signage should encourage cyclists to use the improved Dr. Paul Dudley White Greenway, therefore diverting them from using the pedestrian paths within the park. Moreover, signage should make people aware that pedestrians and bicyclists typically share the park paths and remind cyclists to look out for and give way to pedestrians. Standard MUTCD regulatory and guide signs should be updated as needed to make shared-use paths safer. Pavement markings should clearly indicate bicycle and pedestrian crossings and vehicular crossings.

Currently, the *DCR Signage Graphics Manual* does not include any shared path/directional signage specifically geared towards bicyclists and pedestrians. Shared paths could be identified by using a new sign type that includes directional information and clearly marking it as a shared path. Adding better signage for bicyclists and pedestrians would encourage them to use the correct paths. Adding the DCR logo would reinforce that this is a DCR pathway.



Figure 3-45. (Top Left) MUTCD bike signage similar to two current sign types at Herter Park. Signage to be updated and added to throughout the system. (Bottom Left) Example of pavement markings for bicycle routes and intersections. (Right) Design of new Shared Path/Directional signage including detail and scale view.

DCR Directional Signage

A directional system which clearly indicates facilities and amenities at the park will quickly indicate how to navigate the space. Suggested signage utilizes the DCR Destination and Distance Wayfinding Signs from the *DCR Proposed Signage for Shared-Use Pathways* document.

Some additional wayfinding signage may be beneficial between Elliot Bridge and the Charles River Canoe/Kayak Club-Great Lawn area. 1-2 signs would provide affirmation that the visitor is on their desired route.

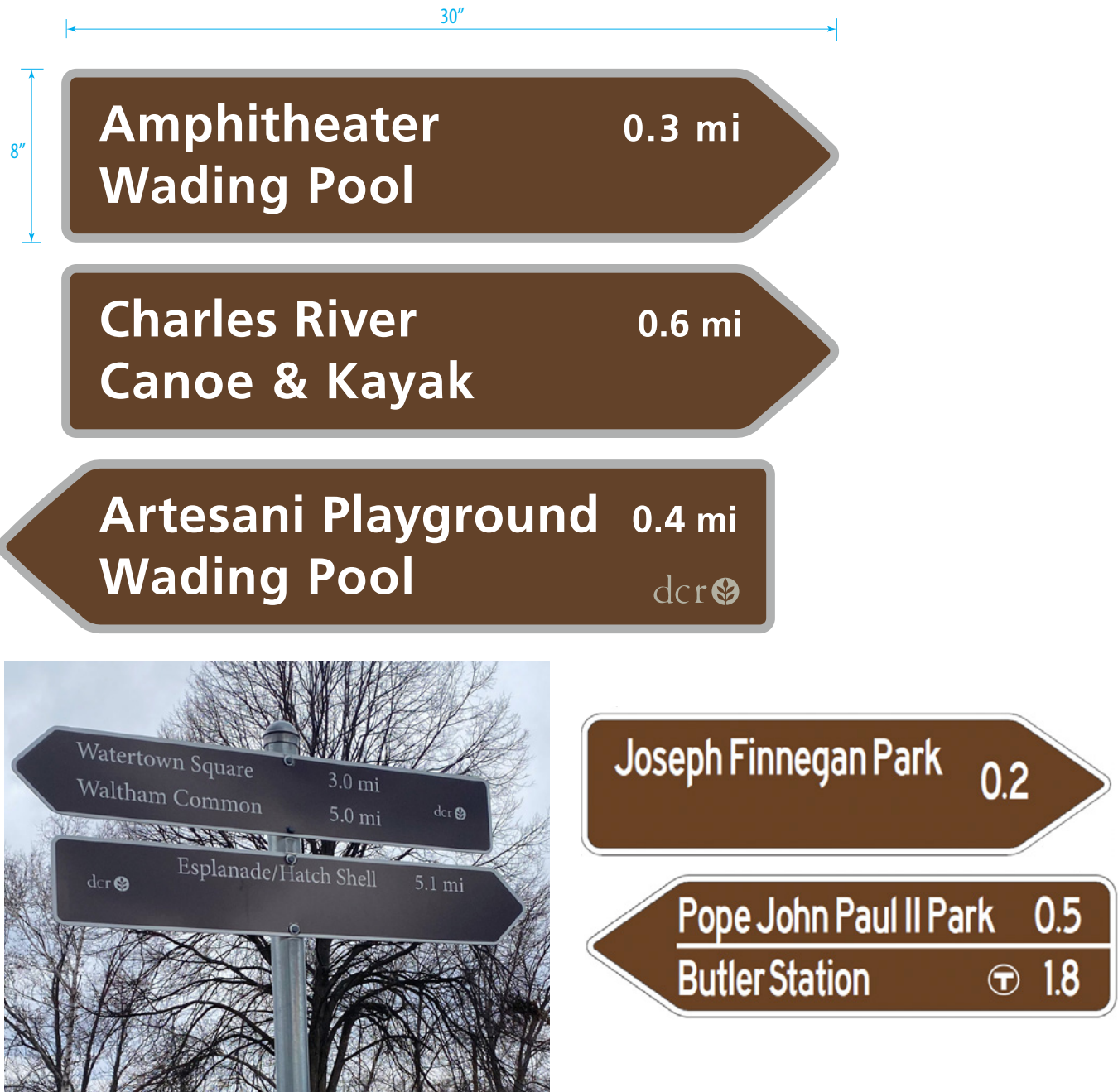


Figure 3-46. (Top) Design reflecting example layout. (Bottom Left) Example of DCR Directional Signage currently at Herter Park. Content intended for bicyclists, not park visitors. (Bottom Right) DCR precedent using font that is not commonly used in system.

DCR Interpretive Signage

There is presently no interpretive signage at Herter Park, but there is a rich and wonderful history and other stories of interest that have not yet been told. With that, at least six interpretive signs have been planned to be added throughout the park.

An interpretive sign must be part of a well-thought-out interpretive plan complete with goals, objectives, thematic statements, and topics. The plan should be based on an audience and site analysis which will guide the selection of materials and interpretive approach. Some suggested initial topics are listed below; these topics should be explored through a more comprehensive interpretive plan.

Potential Topics for Interpretive Panels:

Environmental Topics

- Woodland Restoration
- Living Shoreline / Birds of Herter Park
- Meadow Restoration

Historical Topics

- Park System History (first park in the metro park system)
- The Speedway
- Grand Vision of the 1960s

Additional Suggested Topics

- The Charles River Community Garden (West End)
- At the Fishing Dock (West End) – focusing on the health of the Charles River, water quality, restoring the Charles River, fish in the Charles, fishing ethics and best practices – to promote catch and release – as well as picking up fishing waste
- Herter Community Garden (Central) – focusing on pollinators, pollinator habitat, pollinator garden
- Areas where stormwater management strategies are being implemented (select locations)
- View Terraces – interpretive opportunities at view terrace locations
- Herter Island and Amphitheater Key Improvements

Additional Interpretive Options

- Chronolog is a product that allows the public to upload images of a specific location, creating time lapses of the environment. The three-sided bracket helps contributors align their phones to take consistent photos. Details found at: www.chronolog.io. Locations could include Herter Park restoration areas to show improvement over time.

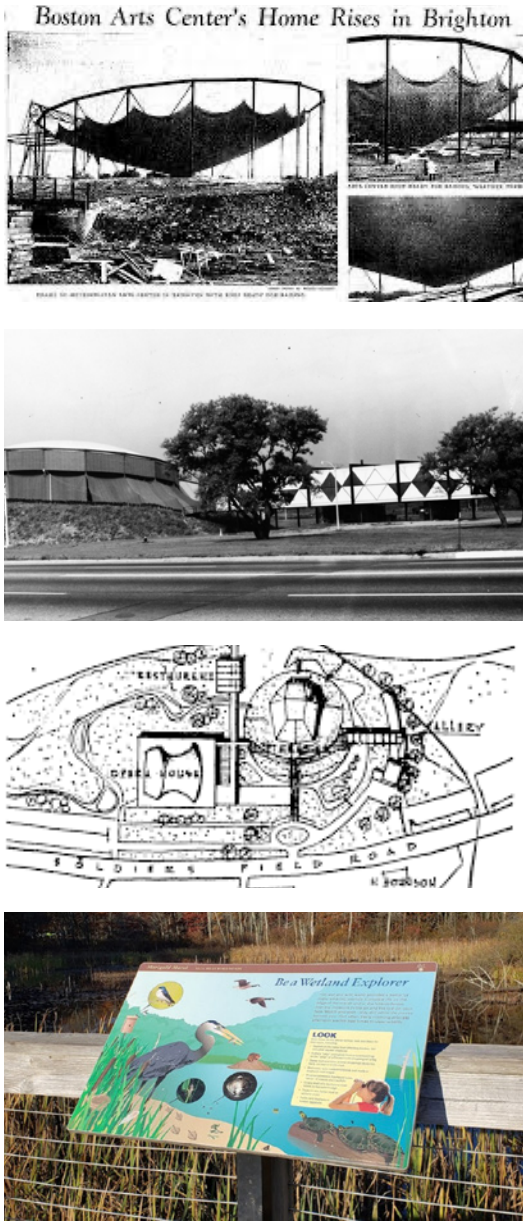


Figure 3-47. (Top Right, 3 images) Selected photographs and other documentation on the history of Herter Park. (Bottom Right) Example of existing DCR Interpretive Signage.

Signage and Wayfinding Improvements Plan

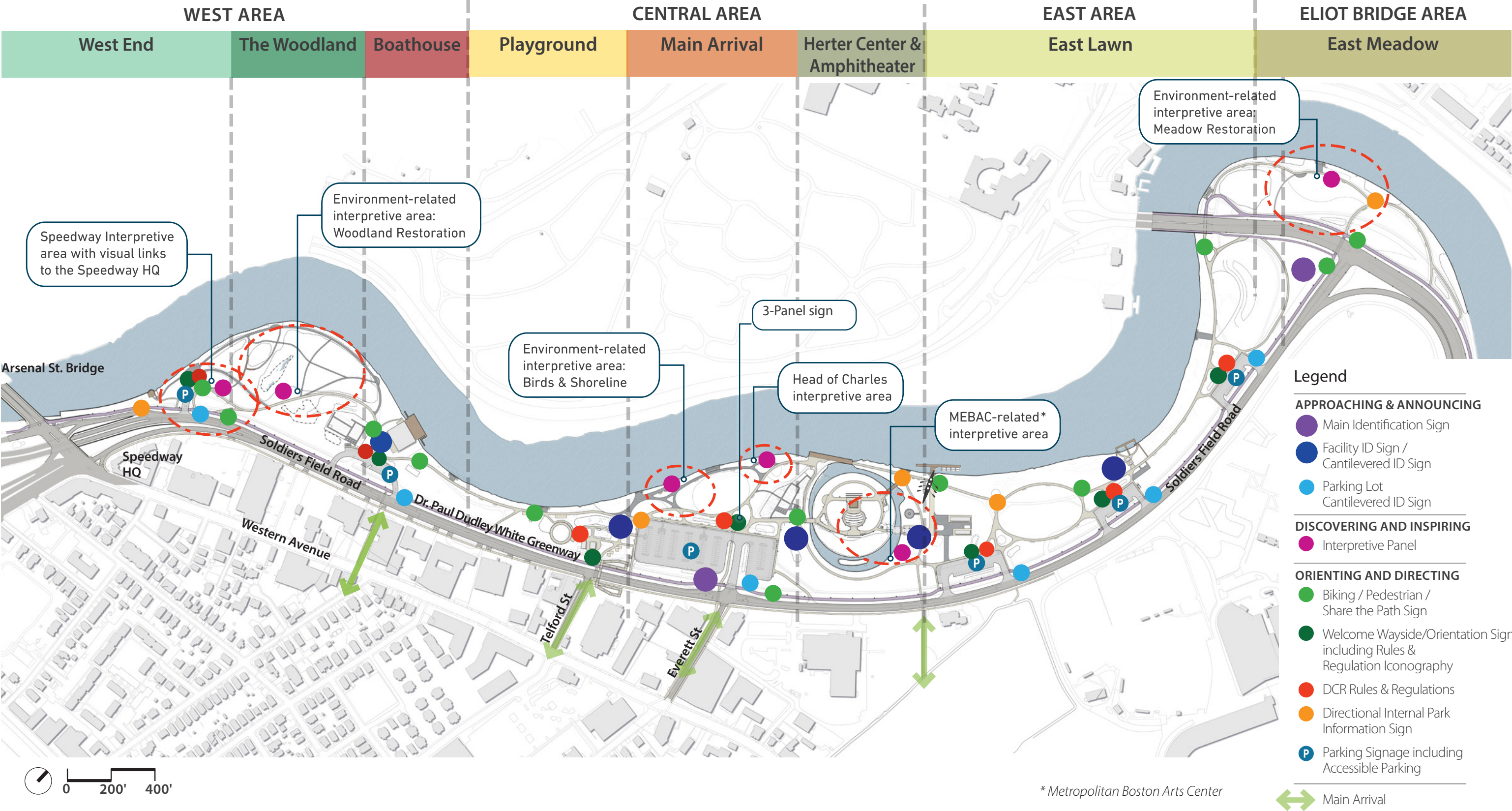


Figure 3-48. Signage and Wayfinding Improvements Plan

Herter Park Signage Hierarchy Recommendations

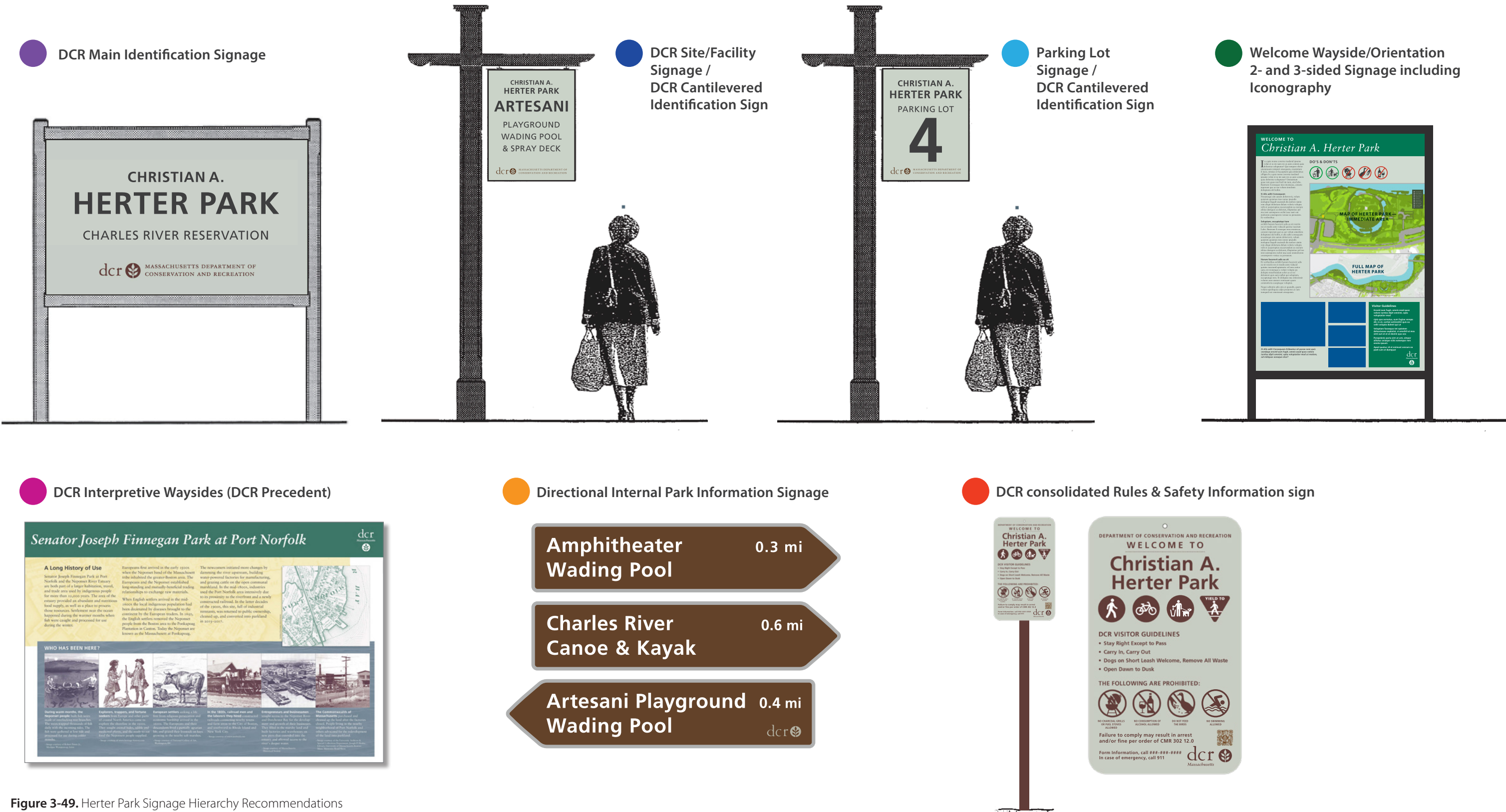


Figure 3-49. Herter Park Signage Hierarchy Recommendations