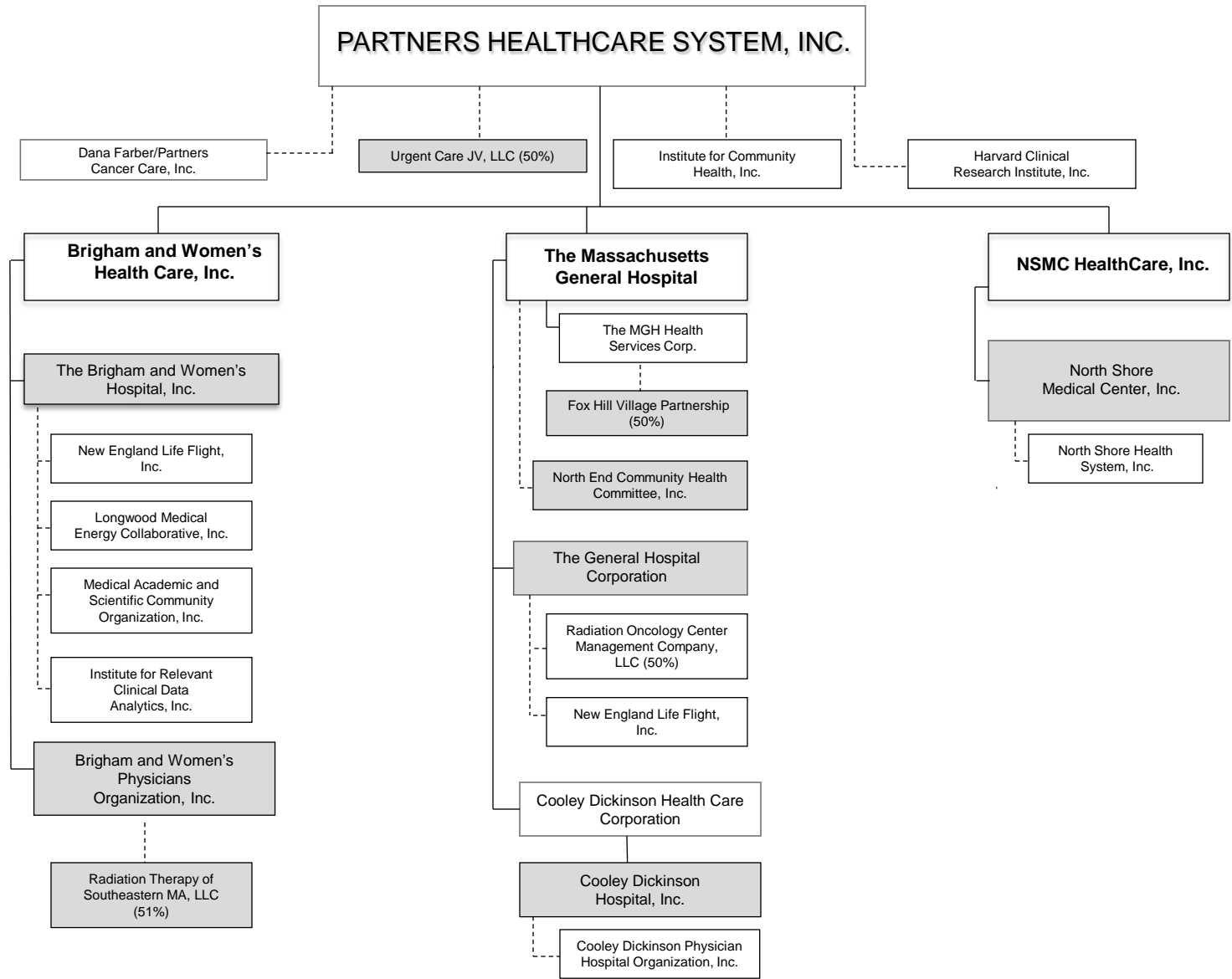


PARTNERS CORPORATE ORGANIZATIONAL CHART – “PARTIAL” OWNERSHIP OR CONTROL



= Clinical Entities
 = Non-Clinical Entities
 ————— = Complete ownership or control
 - - - - - = "Partial" ownership or control (e.g., through the ability to appoint one or more Board members or designated reserve powers)