

# DER Partnerships Program Grant Information Session

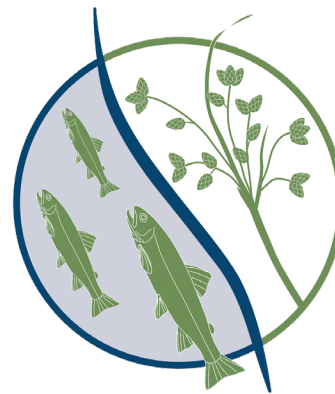
RFR ID: DER 2021-03

June 15, 2021 - 10:00 am

---

Jenny Sanders  
Ecological Restoration Partnerships Specialist  
[DER.Partnerships@mass.gov](mailto:DER.Partnerships@mass.gov)  
(617)626-1508

Hunt Durey, Deputy Director  
Calli Willette, Procurement & Grants Specialist



*Invested in Nature and Community*

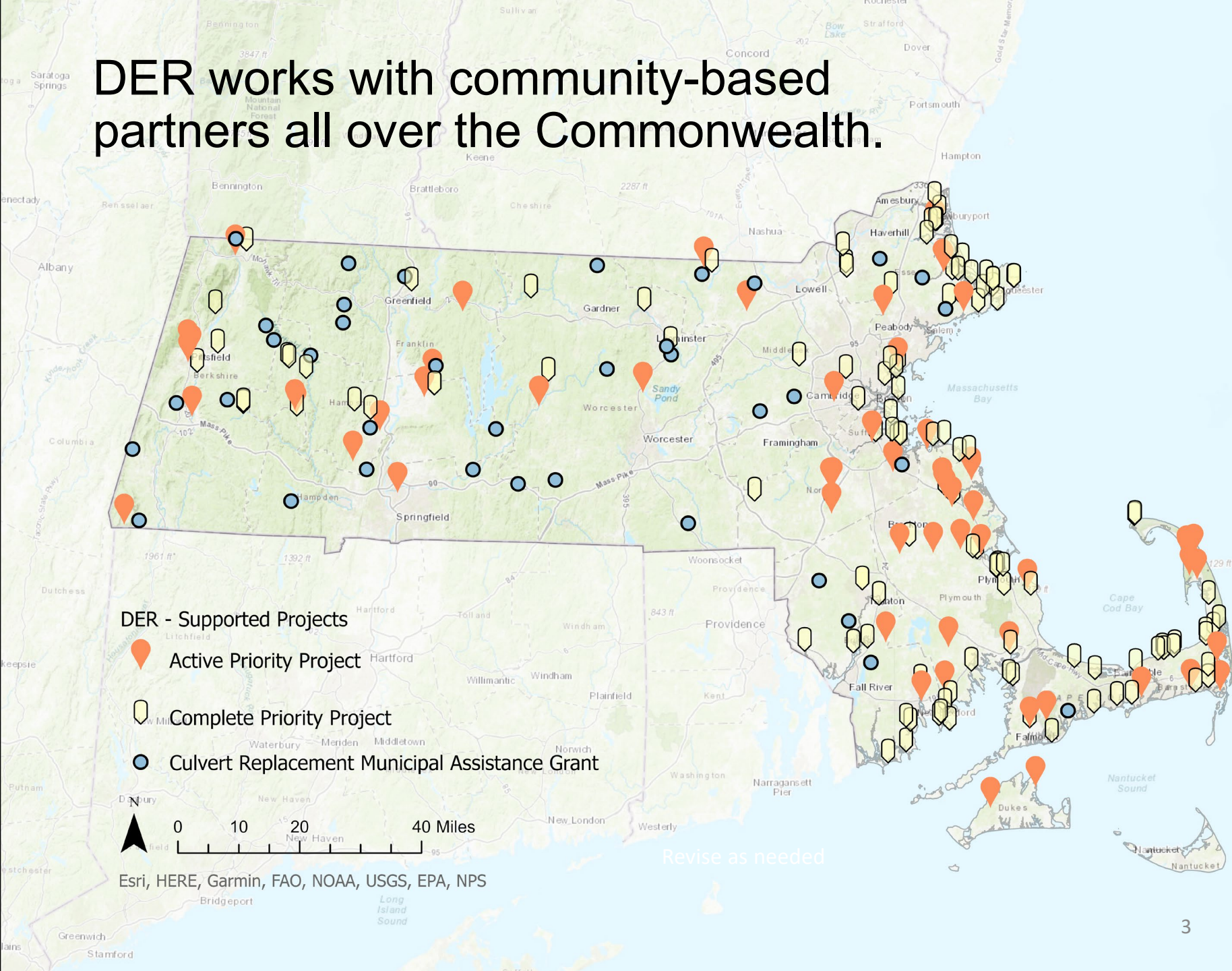
# Agenda

- Program Introduction
- RFR Overview
- How to apply
- Q&A

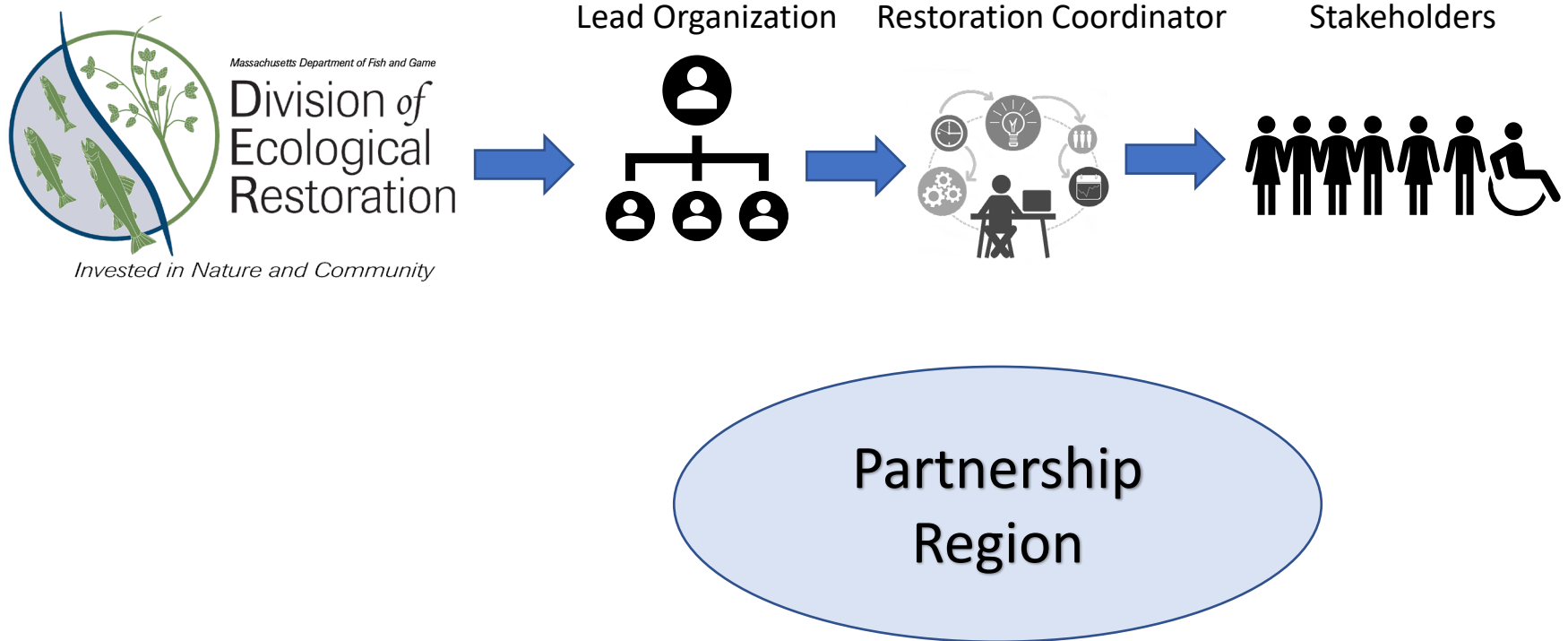


Photo: H. Durey

# DER works with community-based partners all over the Commonwealth.

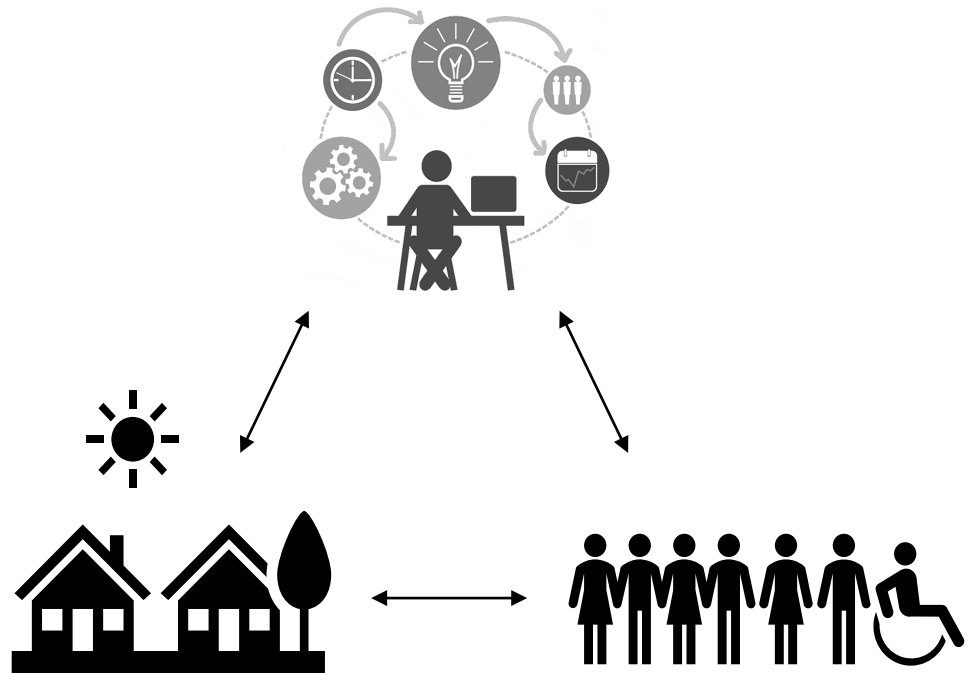
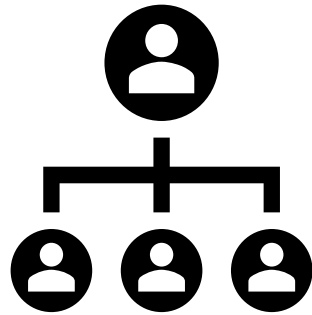


# What is a Regional Restoration Partnership?



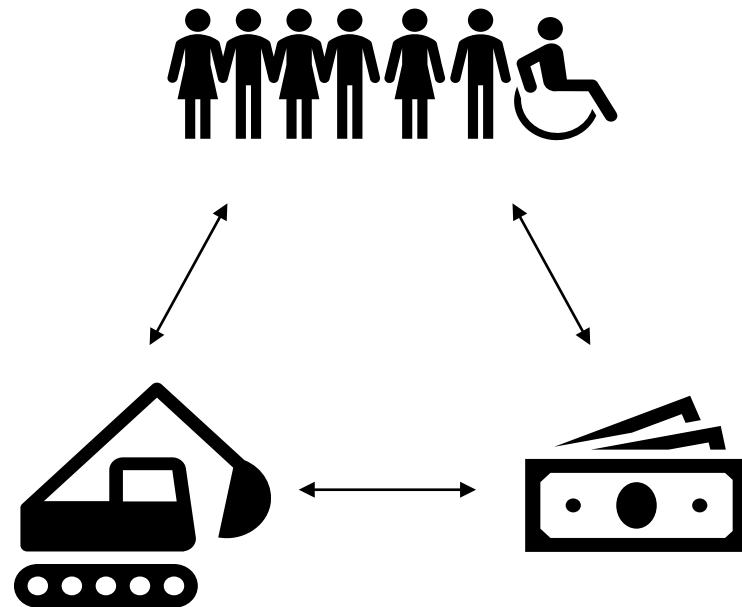
# The Lead Organization is the Partnership leader.

Lead Organization



# The Restoration Coordinator is a qualified professional that supports the Partnership.

Restoration Coordinator

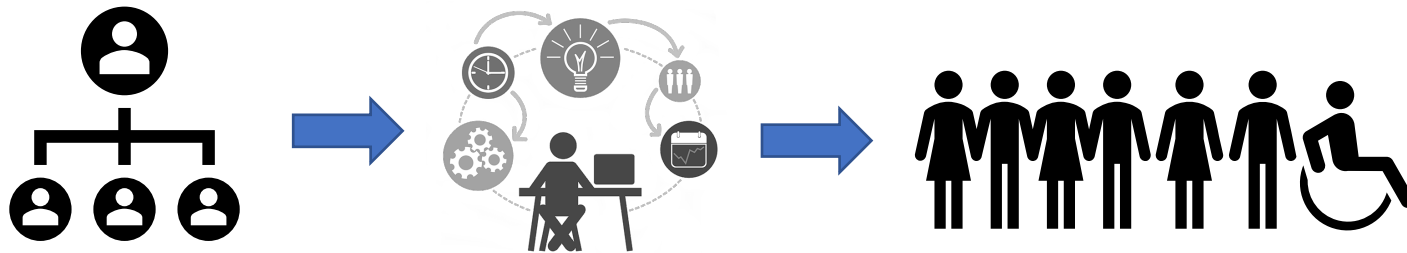


# Stakeholders contribute to the Partnership's success.

Lead Organization

Restoration Coordinator

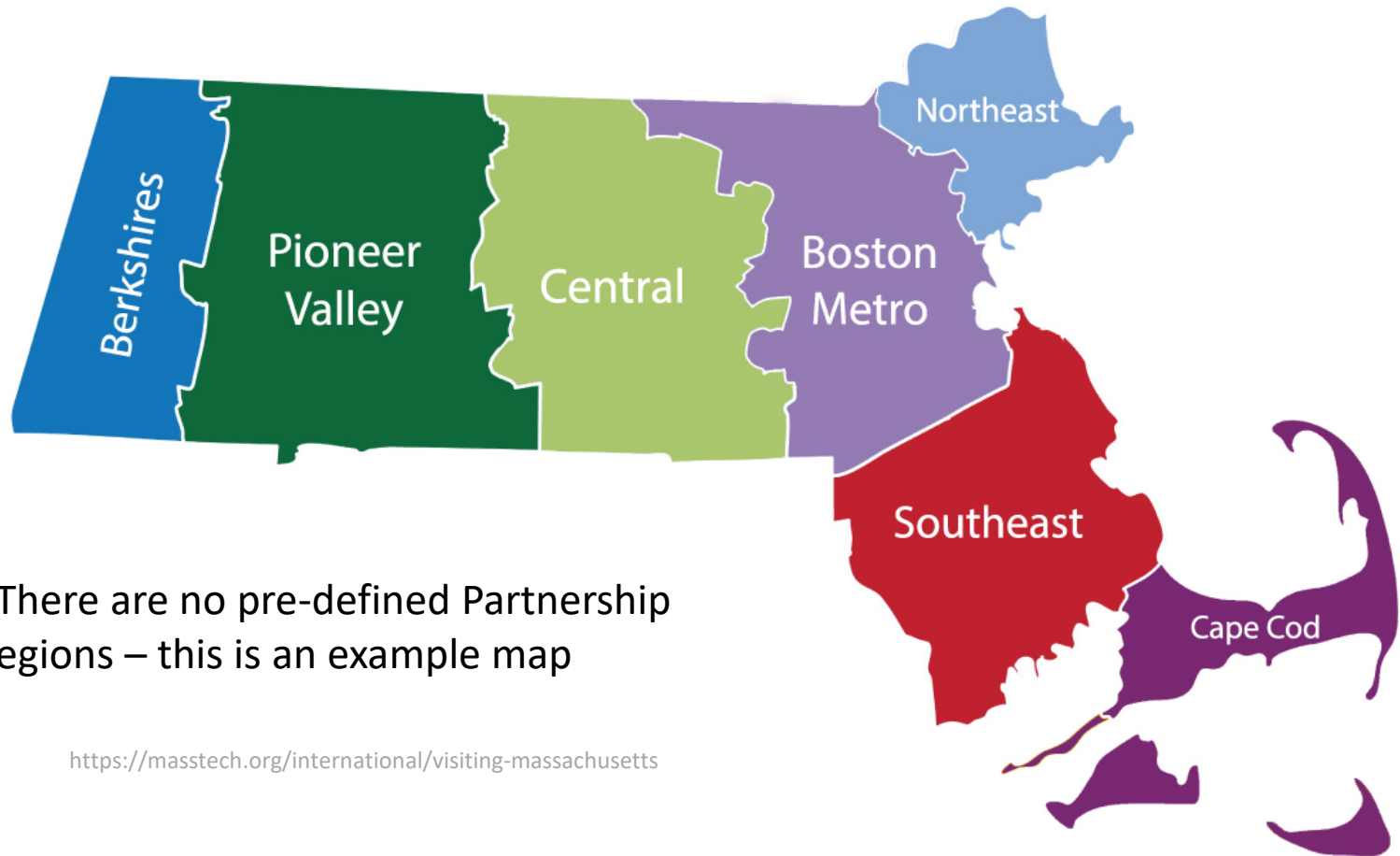
Stakeholders



Partnership  
Region



# What is a Partnership Region?



\*There are no pre-defined Partnership Regions – this is an example map

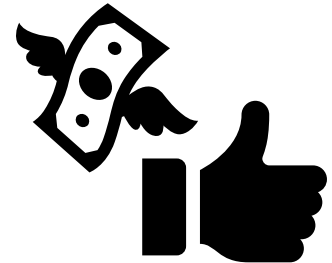
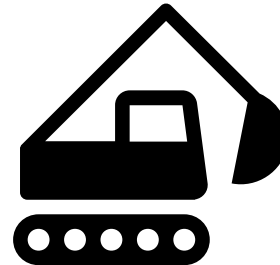
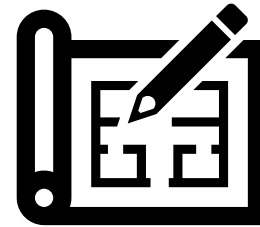
<https://masstech.org/international/visiting-massachusetts>



# Funding will support regional restoration coordination and implementation.

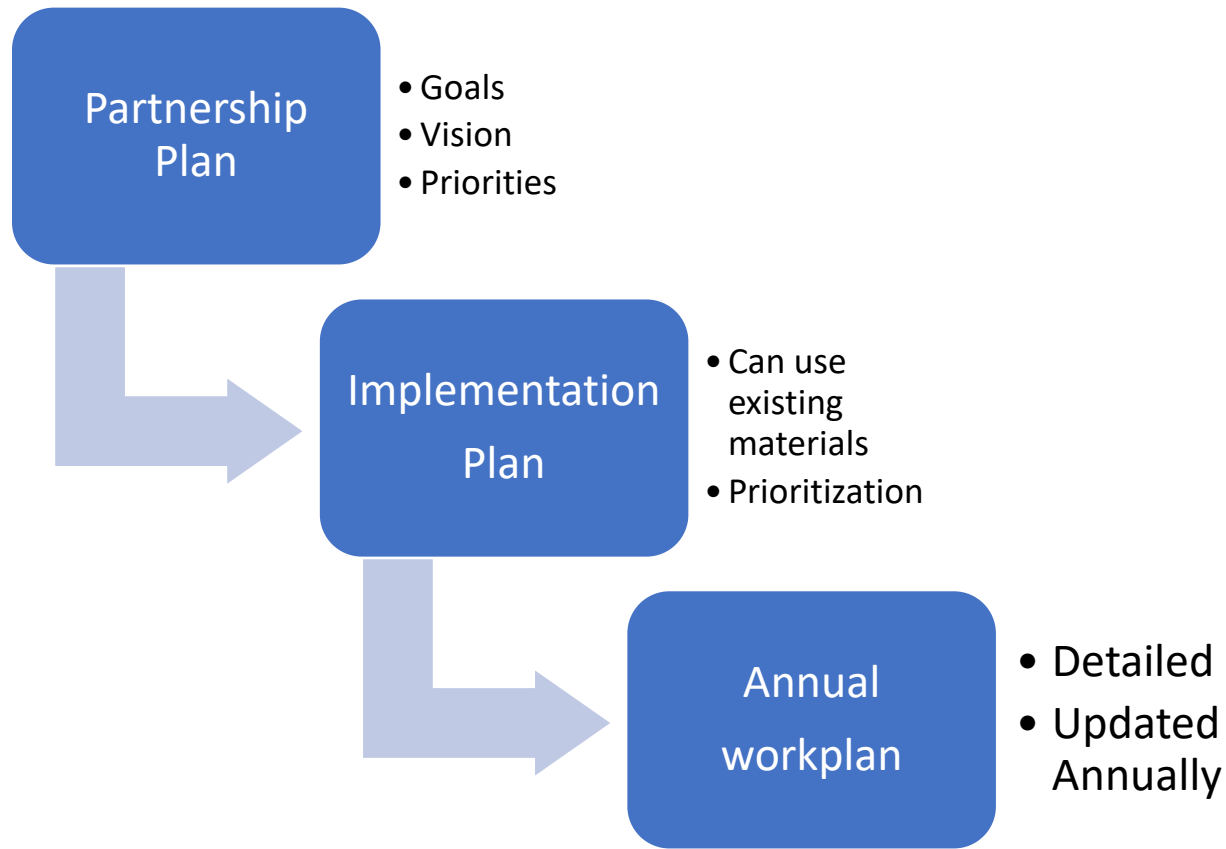


Restoration Coordinator (RC)



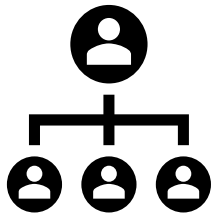
Implementation (Planning, permitting, construction)

# Implementation depends on regional stressors.



# Structured feedback will be used to refine and improve the program.

Who?



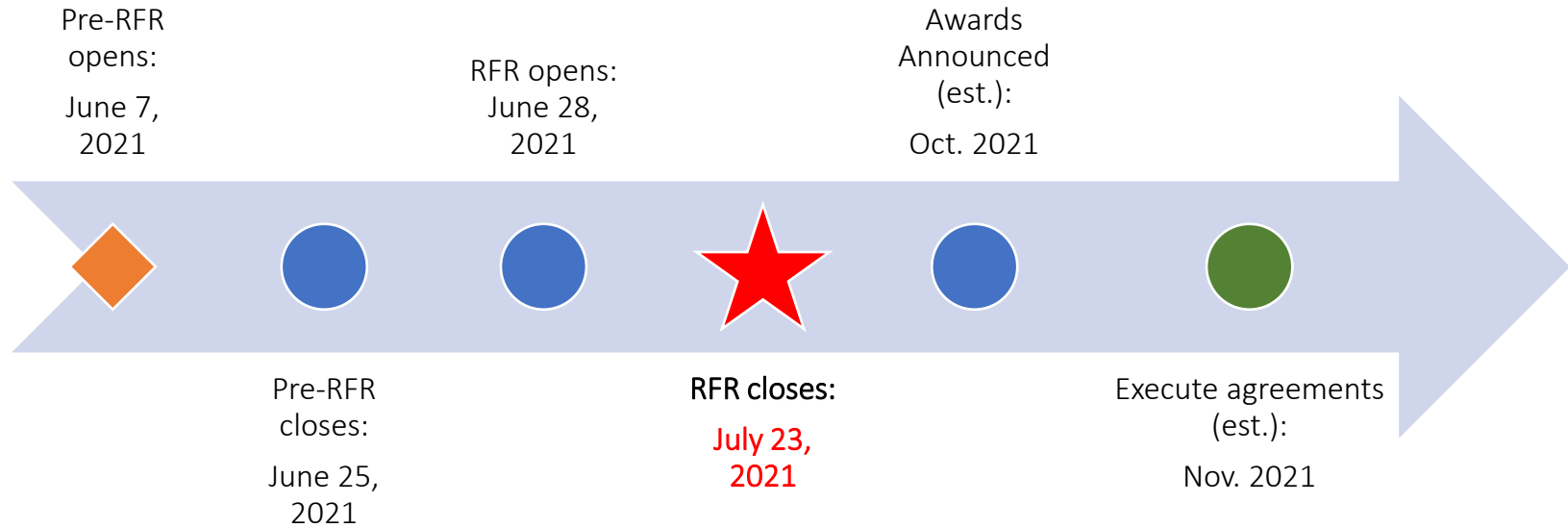
What?

- Application & budget forms
- Training & support materials
- Planning templates
- Reimbursement request process

How?

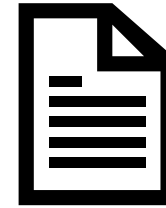


# Key Program Dates

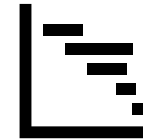


# How to apply

1. Application form



2. Application budget and Partnership schedule



3. Stakeholder letter(s) of support



4. Partnership Region map



**DER website:** [www.mass.gov/der](http://www.mass.gov/der)



Massachusetts Department of Fish and Game  
Division of  
Ecological  
Restoration  
*Invested in Nature and Community*

## Partnerships Program Application Budget

<b>START HERE</b> ---->	<b>Base Annual RC Salary</b>	<b>FTE</b>	<b>Fringe rate (30% max)</b>	<b>Total Annual RC Cost</b>			
	\$0	0.75	0.27	\$0.00			
<b>Restoration Coordinator Costs</b>					<i>(Projected)</i>		
				FY 22	FY 23	FY 24	
RC costs charged to DER award				\$0.00	\$0.00	\$0.00	
Indirect costs (15%)				\$0.00	\$0.00	\$0.00	
Total RC and Indirect costs				\$0.00	\$0.00	\$0.00	
<b>Other Direct Costs</b>					<i>(Projected)</i>		
				FY 22	FY 23	FY 24	
example: mileage (mi. total x 0.56*)				0.00	0.00	0.00	
example: printed materials				0.00	0.00	0.00	
				0.00			
Other Direct Costs total				0.00	0.00	0.00	
<b>Implementation Costs</b>					<i>(Projected)</i>		
				FY 22 (\$20,000 MAX)	FY 23	FY 24	
Activity/Contractor 1				0.00	0.00	0.00	
Activity/Contractor 2				0.00	0.00	0.00	
Activity/Contractor 3				0.00	0.00	0.00	
Implementation total				0.00	0.00	0.00	
<b>GRAND TOTALS</b>				<b>\$0.00</b>	<b>\$0.00</b>	<b>\$0.00</b>	
<b>Projected three-year total budget</b>							<b>\$0.00</b>
<b>Required 25% Match (RC salary and fringe)</b>				FY 22	FY 23	FY 24	
				\$0.00	\$0.00	\$0.00	

# Reminders

## **Eligibility:**

- RPAs and NGOs
- Partnership Region = 75 square miles or greater & not overlapping
- Commit to 25% match for salary + fringe request

## **Deadlines:**

- Pre-RFR closes June 25<sup>th</sup> at 4pm
- Applications due no later than **July 23, 2021 4 pm**



# Thank you!

Jenny Sanders,  
Ecological Restoration Partnerships Specialist

[DER.Partnerships@mass.gov](mailto:DER.Partnerships@mass.gov)

617-626-1508

**DER website:** [www.mass.gov/der](http://www.mass.gov/der)



Submit questions through the Q&A  
box on this webinar.