



REGISTRY OF MOTOR VEHICLES

PASSENGER

— PLATES MANUAL —



Table of Contents

OBTAINING PASSENGER PLATES.....	1
SPECIAL PLATE FEES FOR ORGANIZATIONS	1
VANITY PLATE AVAILABILITY FOR SPECIAL PLATES	1
SURVIVING SPOUSE	2
PLATE REASSIGNMENTS.....	2
EXPIRED / CANCELLED PLATES.....	2
PASSENGER NORMAL.....	3
PASSENGER RESERVED	4
VANITY	5
YEAR OF MANUFACTURE	7
CHARITABLE ORGANIZATION PLATES.....	8
ALS ONE	9
ATLANTIC WHITE SHARK CONSERVANCY	10
BASKETBALL HALL OF FAME	11
BLACKSTONE VALLEY	12
BOSTON CELTICS	13
BRUINS/YOUTH HOCKEY	15
CAPE ANN	16
CAPE AND ISLANDS	17
CHOOSE LIFE	18
CONQUER CANCER.....	19

CURE BREAST CANCER	20
DR. SEUSS	21
FALLEN HEROES	22
FIREFIGHTERS MEMORIAL.....	23
FISH AND WILDLIFE	24
FREEMASONRY	25
FRESH AND LOCAL.....	26
HABITAT AND HERITAGE	27
INVEST IN CHILDREN	28
MARTHA’S VINEYARD	29
MASSACHUSETTS ANIMAL COALITION	30
MASSACHUSETTS 250 YEARS OF INDEPENDENCE.....	31
NANTUCKET ISLAND.....	32
NEW ENGLAND PATRIOTS	33
OLYMPIC SPIRIT	35
OVERDOSE AWARENESS	36
PAN-MASS CHALLENGE	37
PLYMOUTH 400.....	38
RED SOX/JIMMY FUND	39
REGISTERED NURSE.....	40
RIGHT WHALE/ROSEATE TERN	41
STATE POLICE ASSOCIATION OF MASSACHUSETTS.....	42
STRIPED BASS.....	43
UMASS.....	44
UNITED WE STAND.....	45
WELCOME HOME	47
ZOO NEW ENGLAND	48
GOVERNMENT PLATES.....	49

GOVERNOR'S COUNCIL	50
HONORARY CONSULAR.....	51
HOUSE	52
SENATE	53
UNITED STATES CONGRESS	54
UNITED STATES SENATE	55
MEDICAL / DISABILITY PLATES.....	56
DISABILITY	57
DISABLED VETERAN	58
EMERGENCY VEHICLE.....	60
MEDICAL DOCTOR (MD).....	61
MILITARY PLATES	62
BRONZE STAR.....	63
CONGRESSIONAL MEDAL OF HONOR	65
DISTINGUISHED FLYING CROSS	66
EX-POW	68
GOLD STAR FAMILY.....	69
LEGION OF VALOR.....	71
MEDAL OF LIBERTY	72
NATIONAL GUARD	74
PEARL HARBOR SURVIVOR.....	75
PURPLE HEART	77
SILVER STAR.....	79
VETERANS' PLATES.....	81
UNCHARACTERIZED DISCHARGE	83
VETERANS' BRANCH OF SERVICE DECALS	84
VETERANS' WAR TIME DECALS.....	84

OTHER PLATES	85
ANTIQUE	86
ELECTRIC VEHICLE	87
FOREIGN ORGANIZATION	88
HAM OPERATOR	89
LIMITED USE VEHICLE (LUV)	90
LOW SPEED	91
NEWS PHOTOGRAPHER PLATES	92
LOTTERY PLATES.....	93

OBTAINING PASSENGER PLATES

If a customer wants to swap his/her current registration for a new plate, the customer must bring the following to an RMV Service Center...

- A Registration and Title Application signed and stamped from the customer's insurance agent
- Old plates
- Swap fee

If a customer wants to put a new plate on a newly acquired vehicle, the customer must bring the following to an RMV Service Center...

- A Registration and Title Application signed and stamped from the customer's insurance agent
- Registration and title fees
- Sales tax, if applicable
- Title (if used vehicle), Certificate of Origin (if new vehicle), or Bill of Sale and previous registration (if nontitled vehicle)

SPECIAL PLATE FEES FOR ORGANIZATIONS

The Special Plate fees for most Passenger Special Plates (PAS) go to a specific charitable organization or designated private/public entity. The initial special plate fee is distributed as follows...

- \$12 - \$16 covers the cost of manufacturing the plate
- \$28 - \$34 goes to the designated organization

Upon renewal, the entire special plate fee goes to the designated organization.

See individual plates for a detailed disbursement of fees.

VANITY PLATE AVAILABILITY FOR SPECIAL PLATES

Vanity plates are not available for any of the passenger special plates (PAS) and customers cannot request a specific number.

SURVIVING SPOUSE

A surviving spouse can transfer the following plates into his/her name...

- ALS One
- Antique
- Atlantic White Shark Conservancy
- Basketball Hall of Fame
- Blackstone Valley
- Breast Cancer
- Bronze Star*
- Bruins/Youth Hockey
- Cape and Islands
- Cape Ann
- Celtics
- Choose Life
- Congressional Medal of Honor*
- Conquer Cancer
- Dr. Seuss
- Distinguished Flying Cross*
- Ex-POW**
- Fallen Heroes
- Fish and Wildlife
- FireFighters Memorial
- Freemasonry
- Fresh and Local
- Gold Star***
- Habitat and Heritage
- Invest in Children
- Legion of Valor*
- Martha's Vineyard
- Massachusetts Animal Coalition
- Nantucket Island
- Olympic Spirit
- Pan-Mass Challenge
- Patriots
- Pearl Harbor Survivor*
- Plymouth 400
- Purple Heart*
- Red Sox
- Registered Nurse
- Roseate Tern
- Right Whale
- Silver Star*
- State Police Association of Massachusetts
- Striped Bass
- UMASS
- United We Stand
- Vanity
- Veterans' *
- Welcome Home
- Year of Manufacture
- Zoo New England

***Note:** A surviving spouse can transfer a Veterans' Bronze Star, Purple Heart, Pearl Harbor Survivor, Silver Star, Distinguished Flying Cross, Congressional Medal of Honor, or Legion of Valor registration plate to him/herself (until remarriage, cancellation, or non-renewal) but must pay the initial registration fee of up to \$100 and the renewal fee of up to \$100. Also, if the Veteran never obtained these plates or cancelled them, the surviving spouse is eligible to obtain a new set of plates (until remarriage, cancellation, or non-renewal).

****Note:** A surviving spouse can transfer an Ex-POW plate (until remarriage, cancellation, or non-renewal) for no fee.

*****Note:** A surviving spouse can transfer a Gold Star plate only if he/she is the parent of the deceased.

******Note:** Fees are prorated based on transfer date and registration renewal month/year.

A surviving spouse **cannot** transfer the following plates into his/her name...

- Disability
- Disabled Veterans'
- Governor's Council
- Ham Operator
- Honorary Consular Corps
- House
- MD
- National Guard
- News Photographer
- Senate
- US Congress
- US Senate

PLATE REASSIGNMENTS

All plates in this manual can be reassigned to somebody else if that person has a letter from the current owner of the plate. The only exceptions are the following plates:

- Foreign Organization
- Governor's Council
- Ham Operator
- Honorary Consular
- House
- Senate
- US Congress
- US Senate

EXPIRED / CANCELLED PLATES

Once a plate has been expired or cancelled for more than one year and one day beyond its expiration date, a customer cannot renew and keep that plate.



PASSENGER NORMAL

The Passenger Normal Plate features either a white background with red lettering; or a white background with green lettering.

Eligibility: Anyone can obtain a Passenger Normal plate.

Fees: <https://www.mass.gov/doc/rmv-schedule-of-fees/download>

Renewal: The plates need to be renewed every two years.

Available At: Passenger Normal plates are available at any RMV Service Center or any Dealership that is part of the Electronic Vehicle Registration program.

Plate Type: Example: PAN 120WZZ, 1234AA, 12AA34, 1AA234, 123AA4

Note: Green plates can be replaced as red if the green plate is active.



PASSENGER RESERVED

The Passenger Reserved plate features a white background with red lettering.

Eligibility: Anyone can obtain a Passenger Reserved plate.

Fees: <https://www.mass.gov/doc/rmv-schedule-of-fees/download>

Renewal: The plates need to be renewed every two years.

Available At: Passenger Reserved plates are only available through the Special Plates Department. For more information, the customer can call the Special Plates Department at 857-368-8031.

Plate Type: Example: PAR 123A, 1R1, A1A, I122, 12345



VANITY

Vanity plates can be ordered for passenger, commercial, motorcycle, livery, bus, camper, or antique vehicles.

Eligibility: Anyone can order Passenger Vanity plates.

Fees: <https://www.mass.gov/doc/rmv-schedule-of-fees/download>

Renewal: Passenger vanity plates need to be renewed every November.

Available At: Vanity plates can **only** be ordered online at www.Mass.Gov/RMV for individuals. Applications are only accepted from businesses at RMV Service Centers and Quincy Headquarters.

There is a \$50 manufacture fee and a \$20 swap fee. Plates are manufactured within 4-6 weeks after payment is received.

The Special Plates Department will mail the plates to the customer.

Plate Type: Example: PAV SAMPLE

Requirements: All vanity plates must meet the following requirements:

1. Must comply with the following readability standards:
 - a) Must start with at least two letters.
 - b) Passenger, Camper, Livery, Bus, and Commercial vanity plates may contain a maximum of six characters (letters or numbers) and a minimum of two characters. Vanity plates for antique vehicles may contain a maximum of four characters and a minimum of two characters. Motorcycle vanity plates may

contain a maximum of five characters and a minimum of two characters.

- c) Numbers cannot be used in the middle of a plate; they must come at the end. For example, AAA222 would be an acceptable Passenger vanity plate; AAA22A would not be acceptable. The first number used cannot be a "0."
 - d) No periods, spaces, or punctuation marks are allowed.
2. Must not be a duplicate of a plate that is already issued
 3. Must not suggest a vulgarity or profanity including a swear or curse word, or a term not usually displayed in the community for general viewing
 4. Must not be obscene or otherwise contain material of sexual suggestiveness in that it refers to a sexual body part, a sex act, or the availability for sex
 5. Must not include an expression of "fighting words" that the RMV reasonably believes would incite or provoke violence or other immediate breach of peace
 6. Must not reference criminal conduct, including but not limited to acts of violence, motor vehicle crimes, or crimes related to use of alcohol, drugs, illegal substances, or weapons
 7. Must not be an expression of hate, contempt, or ridicule against an individual or group

NOTE: Previously issued Antique plates cannot be registered as Year of Manufacture plates. Antique plates are only issued by the RMV.



YEAR OF MANUFACTURE

A Year of Manufacture (YOM) plate is a plate (in the possession of the customer) originally issued by the Commonwealth in the exact year of manufacture of the antique motor car to which it will be attached. If no plates were issued for a particular year, the customer may use a plate originally issued in a prior year if approved by the Registrar. Vehicles must be at least 25 years old.

The YOM plate can contain no more than 6 characters, must be in good repair and in original condition, and must be from 1978 or earlier. Once the number is issued it cannot be issued again. Therefore duplicates are not allowed.

Refer to the Year of Manufacture Reference List for a detailed list YOM plate guidelines.

Eligibility:

The Year of Manufacture plate must be presented to any full service RMV branch for approval. An *Application for Antique Motor Vehicle or Year of Manufacture Registration Plate* must be notarized before submission to the Registry.

Refer to the Year of Manufacture Reference List and Application for an Antique Motor Vehicle Plate or Year of Manufacture Registration plate for detailed information on the RMV's policy for use of Year of Manufacture plates.

Fees:

<https://www.mass.gov/doc/rmv-schedule-of-fees/download>

Renewal:

The plates need to be renewed every year.

Available at:

The customer must present the YOM plate to any RMV Service Center or through the Special Plates Department for approval. The RMV does not issue YOM plates.

An Application for Antique Motor Vehicle or Year of Manufacture Registration Plate can be downloaded from Mass.Gov/RMV or requested by mail by calling 857-368-8000.

Plate Type:

Example: PAY 12345

CHARITABLE ORGANIZATION PLATES



ALS ONE

ALS One plates feature an image with the words “ALS One” and a green arrow on the left side of the plate and the words “Care & A Cure For ALS” at the bottom of the plate. Proceeds from this plate benefit ALS One Inc.

Eligibility: Anyone can obtain ALS One plates.

Fees: <https://www.mass.gov/doc/rmv-schedule-of-fees/download>

The special plate fee is \$40.

The initial special plate fee is distributed as follows...

- \$12 covers the cost of manufacturing the plate
- \$28 goes to the designated organization

Upon renewal, the entire special plate fee goes to the designated organization.

Renewal: The plates need to be renewed every two years.

Available At: ALS One plates can be ordered online at www.Mass.Gov/RMV. They can also be ordered at any RMV Service Center or any Dealership that is part of the Electronic Vehicle Registration program. A temporary plate will be provided and the permanent plates will be mailed.

Plate Type: Example: PAS LG1234, LG123A



ATLANTIC WHITE SHARK CONSERVANCY

Atlantic White Shark Conservancy plates feature an image of a white shark swimming with fish. Proceeds from this plate benefit the Atlantic White Shark Conservancy Inc.

Eligibility: Anyone can obtain Atlantic White Shark Conservancy plates.

Fees: <https://www.mass.gov/doc/rmv-schedule-of-fees/download>

The special plate fee is \$40.

The initial special plate fee is distributed as follows...

- \$12 covers the cost of manufacturing the plate
- \$28 goes to the designated organization

Upon renewal, the entire special plate fee goes to the designated organization.

Renewal: The plates need to be renewed every two years.

Available At: Atlantic White Shark Conservancy plates can be ordered online at www.Mass.Gov/RMV. They can also be ordered at any RMV Service Center or any Dealership that is part of the Electronic Vehicle Registration program. A temporary plate will be provided and the permanent plates will be mailed.

Plate Type: Example: PAS WS1234, WS123A



BASKETBALL HALL OF FAME

The Basketball Hall of Fame plates feature a basketball and a basketball net on the left side of the plate.

Eligibility: Anyone can obtain Basketball Hall of Fame plates.

Fees: <https://www.mass.gov/doc/rmv-schedule-of-fees/download>

The special plate fee is \$40.

The initial special plate fee is distributed as follows...

- \$12 covers the cost of manufacturing the plate
- \$28 goes to the designated organization

Upon renewal, the entire special plate fee goes to the designated organization.

Renewal: The plates need to be renewed every two years.

Available At: Basketball Hall of Fame plates can be ordered online at www.Mass.Gov/RMV. They can also be ordered at any RMV Service Center or any Dealership that is part of the Electronic Vehicle Registration program. A temporary plate will be provided and the permanent plates will be mailed.

Plate Type: Example: PAS BB1234, BB123A



BLACKSTONE VALLEY

The Blackstone Valley plate features an image of a watermill. Proceeds from this plate go to the Environmental Trust Fund, which provides grants for education and to preserve the Massachusetts environment.

Eligibility: Anyone can obtain Blackstone Valley plates.

Fees: <https://www.mass.gov/doc/rmv-schedule-of-fees/download>

The special plate fee is \$40.

The initial special plate fee is distributed as follows...

- \$12 covers the cost of manufacturing the plate
- \$28 goes to the designated organization

Upon renewal, the entire special plate fee goes to the designated organization.

Renewal: The plates need to be renewed every two years.

Available At: Blackstone Valley plates can be ordered online at www.Mass.Gov/RMV. They can also be ordered at any RMV Service Center or any Dealership that is part of the Electronic Vehicle Registration program. A temporary plate will be provided and the permanent plates will be mailed.

Plate Type: Example: PAS BV1234, BV123A



This style Celtics plate is no longer available.

BOSTON CELTICS

The Boston Celtics Plates feature the team's logo. Proceeds from the Boston Celtics plate go to the Boston Celtics Shamrock Foundation which benefits the Boston Children's Hospital.

Eligibility: Anyone can obtain Boston Celtics plates.

Fees: <https://www.mass.gov/doc/rmv-schedule-of-fees/download>

The special plate fee is \$40.

The initial special plate fee is distributed as follows...

- \$12 covers the cost of manufacturing the plate
- \$28 goes to the designated organization

Upon renewal, the entire special plate fee goes to the designated organization.

Renewal: The plates need to be renewed every two years.

Available at: Boston Celtics plates can be ordered online at www.Mass.Gov/RMV. They can also be ordered at any RMV

Service Center or any Dealership that is part of the Electronic Vehicle Registration program. A temporary plate will be provided and the permanent plates will be mailed.

Plate Type: Example: PAS CS1234, CS12AB



This style Bruins plate is no longer available.

BRUINS/YOUTH HOCKEY

Boston Bruins plates feature the Boston Bruins team logo. Proceeds from this plate benefit Massachusetts Youth Hockey Inc.

Eligibility: Anyone can obtain Boston Bruins plates.

Fees: <https://www.mass.gov/doc/rmv-schedule-of-fees/download>

The special plate fee is \$40.

The initial special plate fee is distributed as follows...

- \$12 covers the cost of manufacturing the plate
- \$28 goes to the designated organization

Upon renewal, the entire special plate fee goes to the designated organization.

Renewal: The plates need to be renewed every two years.

Available At: Boston Bruins plates can be ordered online at www.Mass.Gov/RMV. They can also be ordered at any RMV Service Center or any Dealership that is part of the Electronic Vehicle Registration program. A temporary plate will be provided and the permanent plates will be mailed.

Plate Type: Example: PAS BR1234, BR123A



CAPE ANN

Cape Ann plates feature four colorful images representing Cape Ann on the left of the plate, with “LOVECAPEANN.COM” and paint and paintbrushes at the bottom of the plate. Proceeds from this plate benefit the Cape Ann Community Foundation Inc.

Eligibility: Anyone can obtain Cape Ann plates.

Fees: <https://www.mass.gov/doc/rmv-schedule-of-fees/download>

The special plate fee is \$40.

The initial special plate fee is distributed as follows...

- \$12 covers the cost of manufacturing the plate
- \$28 goes to the designated organization

Upon renewal, the entire special plate fee goes to the designated organization.

Renewal: The plates need to be renewed every two years.

Available At: Cape Ann plates can be ordered online at www.Mass.Gov/RMV. They can also be ordered at any RMV Service Center or any Dealership that is part of the Electronic Vehicle Registration program. A temporary plate will be provided and the permanent plates will be mailed.

Plate Type: Example: PAS CA1234, CA123A



CAPE AND ISLANDS

The Cape and Islands plate features Eastham's Nauset Lighthouse along with the cliffs of Siasconset and Aquinnah. Proceeds from this plate go towards economic development and tourism on Cape Cod, Martha's Vineyard, and Nantucket.

Eligibility: Anyone can obtain Cape and Island plates.

Fees: <https://www.mass.gov/doc/rmv-schedule-of-fees/download>

The special plate fee is \$50.

The initial special plate fee is distributed as follows...

- \$16 covers the cost of manufacturing the plate
- \$34 goes to the designated organization

Upon renewal, the entire special plate fee goes to the designated organization.

Renewal: The plates need to be renewed every two years.

Available At: Cape and Islands plates can be ordered online at www.Mass.Gov/RMV. They can also be ordered at any RMV Service Center or any Dealership that is part of the Electronic Vehicle Registration program. A temporary plate will be provided and the permanent plates will be mailed.

Plate Type: Example: PAS CI1234 or IC1234, CI123A, IC123A, CP1234, CP123A



CHOOSE LIFE

The Choose Life plate features an image of a mother holding a child with a yellow colored heart behind them. The bottom of the plate reads “Choose Life” in black colored text. Proceeds from this plate will fund Choose Life, Inc, which benefits not-for-profit agencies within Massachusetts

Eligibility: Anyone can obtain Massachusetts Choose Life plates.

Fees: <https://www.mass.gov/doc/rmv-schedule-of-fees/download>

The special plate fee is \$40.

The initial special plate fee is distributed as follows...

- \$12 covers the cost of manufacturing the plate
- \$28 goes to the designated organization

Upon renewal, the entire special plate fee goes to the designated organization.

Renewal: The plates need to be renewed every two years.

Available At: Choose Life plates can be ordered online at www.Mass.Gov/RMV. They can also be ordered at any RMV Service Center or any Dealership that is part of the Electronic Vehicle Registration program. A temporary plate will be provided and the permanent plates will be mailed.

Plate Type: Example: PAS CL1234, CL123A, CL12AB



CONQUER CANCER

The Conquer Cancer Plate features a candle, an eye with a teardrop, a sailboat, and the words “Conquer Cancer.” Proceeds from this plate benefit the Conquer Cancer Coalition of Massachusetts.

Eligibility: Anyone can obtain Conquer Cancer plates.

Fees: <https://www.mass.gov/doc/rmv-schedule-of-fees/download>

The special plate fee is \$40.

The initial special plate fee is distributed as follows...

- \$12 covers the cost of manufacturing the plate
- \$28 goes to the designated organization

Upon renewal, the entire special plate fee goes to the designated organization.

Renewal: The plates need to be renewed every two years.

Available At: Conquer Cancer plates can be ordered online at www.Mass.Gov/RMV. They can also be ordered at any RMV Service Center or any Dealership that is part of the Electronic Vehicle Registration program. A temporary plate will be provided and the permanent plates will be mailed.

Plate Type: Example: PAS CC1000, CC100A



CURE BREAST CANCER

The Cure Breast Cancer plate features an image of a Pink Ribbon with the word Cure (in blue) across it. The bottom of the plate features the words "Cure Breast Cancer." Proceeds from this plate benefit Tufts New England Medical Center Hospital Inc/Diane Zaniboni Breast Cancer Research Fund for Inflammatory Breast Cancer Research Project.

Eligibility: Anyone can obtain Massachusetts Cure Breast Cancer plates.

Fees: <https://www.mass.gov/doc/rmv-schedule-of-fees/download>

The special plate fee is \$40.

The initial special plate fee is distributed as follows...

- \$12 covers the cost of manufacturing the plate
- \$28 goes to the designated organization

Upon renewal, the entire special plate fee goes to the designated organization.

Renewal: The plates need to be renewed every two years.

Available At: Cure Breast Cancer plates can be ordered online at www.Mass.Gov/RMV. They can also be ordered at any RMV Service Center or any Dealership that is part of the Electronic Vehicle Registration program. A temporary plate will be provided and the permanent plates will be mailed.

Plate Type: Example: PAS B1000, BC100A



DR. SEUSS

Dr. Seuss plates feature an image of The Cat in the Hat and the website “SeussInSpringfield.org” at the bottom of the plate. Proceeds from this plate fund SeussInSpringfield.org, which benefits Springfield Museums.

Eligibility: Anyone can obtain Dr. Seuss plates.

Fees: <https://www.mass.gov/doc/rmv-schedule-of-fees/download>

The special plate fee is \$40.

The initial special plate fee is distributed as follows...

- \$12 covers the cost of manufacturing the plate
- \$28 goes to the designated organization

Upon renewal, the entire special plate fee goes to the designated organization.

Renewal: The plates need to be renewed every two years.

Available At: Dr. Seuss plates can be ordered online at www.Mass.Gov/RMV. They can also be ordered at any RMV Service Center or any Dealership that is part of the Electronic Vehicle Registration program. A temporary plate will be provided and the permanent plates will be mailed.

Plate Type: Example: PAS DR1234, DR123A



FALLEN HEROES

Fallen Heroes plates feature an image of a soldier kneeling in front of the marker of a fallen comrade. Proceeds from this plate benefit the Massachusetts Iraq and Afghanistan Fallen Hero Memorial Fund Inc.

Eligibility: Anyone can obtain Fallen Heroes plates.

Fees: <https://www.mass.gov/doc/rmv-schedule-of-fees/download>

The special plate fee is \$40.

The initial special plate fee is distributed as follows...

- \$12 covers the cost of manufacturing the plate
- \$28 goes to the designated organization

Upon renewal, the entire special plate fee goes to the designated organization.

Renewal: The plates need to be renewed every two years.

Available At: Fallen Heroes plates can be ordered online at www.Mass.Gov/RMV. They can also be ordered at any RMV Service Center or any Dealership that is part of the Electronic Vehicle Registration program. A temporary plate will be provided and the permanent plates will be mailed.

Plate Type: Example: PAS FH1234, FH123A



FIREFIGHTERS MEMORIAL

The FireFighters Memorial plate features an image of a firefighter against a backdrop of a red Maltese Cross. The bottom of the plate features the words “Firefighters Memorial.” Proceeds from this plate benefit the FireFighters Memorial fund.

Eligibility: Anyone can obtain FireFighters Memorial plates.

Fees: <https://www.mass.gov/doc/rmv-schedule-of-fees/download>

The special plate fee is \$40.

The initial special plate fee is distributed as follows...

- \$12 covers the cost of manufacturing the plate
- \$28 goes to the designated organization

Upon renewal, the entire special plate fee goes to the designated organization.

Renewal: The plates need to be renewed every two years.

Available At: FireFighters Memorial plates can be ordered online at www.Mass.Gov/RMV. They can also be ordered at any RMV Service Center or any Dealership that is part of the Electronic Vehicle Registration program. A temporary plate will be provided and the permanent plates will be mailed.

Plate Type: Example: PAS FF1000, FF100A



FISH AND WILDLIFE

The Fish and Wildlife plate features an image of a trout. Proceeds from this plate go to the Environmental Trust Fund, which provides grants for education and to preserve the Massachusetts environment.

Eligibility: Anyone can obtain Fish and Wildlife plates.

Fees: <https://www.mass.gov/doc/rmv-schedule-of-fees/download>

The special plate fee is \$40.

The initial special plate fee is distributed as follows...

- \$12 covers the cost of manufacturing the plate
- \$28 goes to the designated organization

Upon renewal, the entire special plate fee goes to the designated organization.

Renewal: The plates need to be renewed every two years.

Available At: Fish and Wildlife plates can be ordered online at www.Mass.Gov/RMV. They can also be ordered at any RMV Service Center or any Dealership that is part of the Electronic Vehicle Registration program. A temporary plate will be provided and the permanent plates will be mailed.

Plate Type: Example: PAS FW1234, FW123A



FREEMASONRY

Freemasonry plates feature an image of the square and compasses. Proceeds from this plate benefit the Masonic Education and Charity Trust.

Eligibility: Anyone can obtain Freemasonry plates.

Fees: <https://www.mass.gov/doc/rmv-schedule-of-fees/download>

The special plate fee is \$40.

The initial special plate fee is distributed as follows...

- \$12 covers the cost of manufacturing the plate
- \$28 goes to the designated organization

Upon renewal, the entire special plate fee goes to the designated organization.

Renewal: The plates need to be renewed every two years.

Available At: Freemasonry plates can be ordered online at www.Mass.Gov/RMV. They can also be ordered at any RMV Service Center or any Dealership that is part of the Electronic Vehicle Registration program. A temporary plate will be provided and the permanent plates will be mailed.

Plate Type: Example: PAS MM1234, MM123A



FRESH AND LOCAL

Fresh and Local plates feature an image of freshly grown fruits and vegetables. Proceeds from this plate benefit Third Sector New England Inc, which will distribute the money to farmers' markets and to Tufts University project on farms.

Eligibility: Anyone can obtain Fresh and Local plates.

Fees: <https://www.mass.gov/doc/rmv-schedule-of-fees/download>

The special plate fee is \$40.

The initial special plate fee is distributed as follows...

- \$12 covers the cost of manufacturing the plate
- \$28 goes to the designated organization

Upon renewal, the entire special plate fee goes to the designated organization.

Renewal: The plates need to be renewed every two years.

Available At: Fresh and Local plates can be ordered online at www.Mass.Gov/RMV. They can also be ordered at any RMV Service Center or any Dealership that is part of the Electronic Vehicle Registration program. A temporary plate will be provided and the permanent plates will be mailed.

Plate Type: Example: PAS AG1234, AG123A



HABITAT AND HERITAGE

Habitat and Heritage plates feature an image of a deer's head and the words "Habitat & Heritage – Sportsmen's Land Trust" at the bottom of the plate. Proceeds from this plate benefit the Sportsmen's National Land Trust, Massachusetts Chapter, Inc.

Eligibility: Anyone can obtain Habitat and Heritage plates.

Fees: <https://www.mass.gov/doc/rmv-schedule-of-fees/download>

The special plate fee is \$40.

The initial special plate fee is distributed as follows...

- \$12 covers the cost of manufacturing the plate
- \$28 goes to the designated organization

Upon renewal, the entire special plate fee goes to the designated organization.

Renewal: The plates need to be renewed every two years.

Available At: Habitat and Heritage plates can be ordered online at www.Mass.Gov/RMV. They can also be ordered at any RMV Service Center or any Dealership that is part of the Electronic Vehicle Registration program. A temporary plate will be provided and the permanent plates will be mailed.

Plate Type: Example: PAS SL1234, SL123A



INVEST IN CHILDREN

Invest in Children plates feature artwork provided by the United Way. The special plate fee from this plate benefits the Child Care Quality Fund, administered by the Massachusetts Office of Child Care Services.

Eligibility: Anyone can obtain Invest in Children plates.

Fees: <https://www.mass.gov/doc/rmv-schedule-of-fees/download>

The special plate fee is \$40.

The initial special plate fee is distributed as follows...

- \$12 covers the cost of manufacturing the plate
- \$28 goes to the designated organization

Upon renewal, the entire special plate fee goes to the designated organization.

Renewal: The plates need to be renewed every two years.

Available At: Invest in Children plates can be ordered online at www.Mass.Gov/RMV. They can also be ordered at any RMV Service Center or any Dealership that is part of the Electronic Vehicle Registration program. A temporary plate will be provided and the permanent plates will be mailed.

Plate Type: Example: PAS TC1234, TC123A



MARTHA'S VINEYARD

Martha's Vineyard plates feature an image of the Martha's Vineyard ferry. Proceeds from this plate benefit Martha's Vineyard Community Services Inc.

Eligibility: Anyone can obtain Martha's Vineyard plates.

Fees: <https://www.mass.gov/doc/rmv-schedule-of-fees/download>

The special plate fee is \$40.

The initial special plate fee is distributed as follows...

- \$12 covers the cost of manufacturing the plate
- \$28 goes to the designated organization

Upon renewal, the entire special plate fee goes to the designated organization.

Renewal: The plates need to be renewed every two years.

Available At: Martha's Vineyard plates can be ordered online at www.Mass.Gov/RMV. They can also be ordered at any RMV Service Center or any Dealership that is part of the Electronic Vehicle Registration program. A temporary plate will be provided and the permanent plates will be mailed.

Plate Type: Example: PAS MV1234, MV123A



MASSACHUSETTS ANIMAL COALITION

Massachusetts Animal Coalition plates feature a cat and dog. The proceeds from this plate benefit non-profit humane organizations and municipal animal control agencies in the Commonwealth, to be used to prevent pet overpopulation by funding programs that provide services such as spaying and neutering cats and dogs for free or at a minimal cost.

Eligibility: Anyone can obtain Massachusetts Animal Coalition plates.

Fees: <https://www.mass.gov/doc/rmv-schedule-of-fees/download>

The special plate fee is \$40.

The initial special plate fee is distributed as follows...

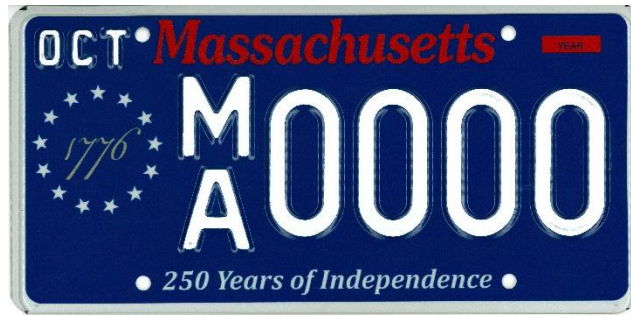
- \$12 covers the cost of manufacturing the plate
- \$28 goes to the designated organization

Upon renewal, the entire special plate fee goes to the designated organization.

Renewal: The plates need to be renewed every two years.

Available At: Massachusetts Animal Coalition plates can be ordered online at www.Mass.Gov/RMV. They can also be ordered at any RMV Service Center or any Dealership that is part of the Electronic Vehicle Registration program. A temporary plate will be provided and the permanent plates will be mailed.

Plate Type: Example: PAS SN1234, SN123A



MASSACHUSETTS 250 YEARS OF INDEPENDENCE

Massachusetts 250 Years of Independence plates are blue and feature the year 1776 surrounded by 13 stars and the words “250 Years of Independence” at the bottom of the plate.

Eligibility: Anyone can obtain Massachusetts 250 Years of Independence plates.

Fees: <https://www.mass.gov/doc/rmv-schedule-of-fees/download>

The special plate fee is \$40 and goes to the general fund (both at issuance and renewal).

Renewal: The plates need to be renewed every two years.

Available At: Massachusetts 250 Years of Independence plates can be ordered online at www.Mass.Gov/RMV. They can also be ordered at any RMV Service Center or any Dealership that is part of the Electronic Vehicle Registration program. A temporary plate will be provided and the permanent plates will be mailed.

Plate Type: Example: PAS MA1234, MA123A



NANTUCKET ISLAND

Nantucket Island plates feature an outline of Nantucket Island with a whale incorporated into the design. Proceeds from this plate benefit the Nantucket Lighthouse School and other island non-profits that benefit children.

Eligibility: Anyone can obtain Nantucket Island plates.

Fees: <https://www.mass.gov/doc/rmv-schedule-of-fees/download>

The special plate fee is \$40.

The initial special plate fee is distributed as follows...

- \$12 covers the cost of manufacturing the plate
- \$28 goes to the designated organization

Upon renewal, the entire special plate fee goes to the designated organization.

Renewal: The plates need to be renewed every two years.

Available At: Nantucket Island plates can be ordered online at www.Mass.Gov/RMV. They can also be ordered at any RMV Service Center or any Dealership that is part of the Electronic Vehicle Registration program. A temporary plate will be provided and the permanent plates will be mailed.

Plate Type: Example: PAS NI1234, NI123A



NEW ENGLAND PATRIOTS

Patriots plates feature the Patriots logo and, depending on the version, either the words “Superbowl Champions”, “5X Champions”, or “6X Champions”. Proceeds from this plate benefit the New England Patriots Charitable Foundation.

Eligibility: Anyone can obtain Patriots plates.

Fees: <https://www.mass.gov/doc/rmv-schedule-of-fees/download>

The special plate fee is \$40.

The initial special plate fee is distributed as follows...

- \$12 covers the cost of manufacturing the plate
- \$28 goes to the designated organization

Upon renewal, the entire special plate fee goes to the designated organization.

Renewal: The plates need to be renewed every two years.

Available At: Patriots plates can be ordered online at www.Mass.Gov/RMV. They can also be ordered at any RMV Service Center or any Dealership that is part of the Electronic Vehicle Registration

program. A temporary plate will be provided and the permanent plates will be mailed.

Plate Type: Example: PAS NE1234, NE123A



OLYMPIC SPIRIT

The Olympic Spirit plate features the five colored Olympic rings. Proceeds from this plate go to the Massachusetts Olympic Committee, which benefits the residents of Massachusetts on US Olympic teams.

Eligibility: Anyone can obtain Olympic Spirit plates.

Fees: <https://www.mass.gov/doc/rmv-schedule-of-fees/download>

The special plate fee is \$50.

The initial special plate fee is distributed as follows...

- \$16 covers the cost of manufacturing the plate
- \$34 goes to the designated organization

Upon renewal, the entire special plate fee goes to the designated organization.

Renewal: The plates need to be renewed every two years.

Available At: Olympic Spirit plates can be ordered online at www.Mass.Gov/RMV. They can also be ordered at any RMV Service Center or any Dealership that is part of the Electronic Vehicle Registration program. A temporary plate will be provided and the permanent plates will be mailed.

Plate Type: Example: PAS OS1234, OS123A



OVERDOSE AWARENESS

The Overdose Awareness plate features an image of a purple ribbon with angel wings and a halo and the words “Overdose Awareness”. Proceeds from this plate go to TEAM SHARING Inc., which provides support and friendship to grieving families while working to raise awareness of Substance Use Disorder and its impact on our communities.

Eligibility: Anyone can obtain Overdose Awareness plates.

Fees: <https://www.mass.gov/doc/rmv-schedule-of-fees/download>

The special plate fee is \$50.

The initial special plate fee is distributed as follows...

- \$16 covers the cost of manufacturing the plate
- \$34 goes to the designated organization

Upon renewal, the entire special plate fee goes to the designated organization.

Renewal: The plates need to be renewed every two years.

Available At: Overdose Awareness plates can be ordered online at www.Mass.Gov/RMV. They can also be ordered at any RMV Service Center or any Dealership that is part of the Electronic Vehicle Registration program. A temporary plate will be provided and the permanent plates will be mailed.

Plate Type: Example: PAS OA1234, OA123A



PAN-MASS CHALLENGE

Pan-Mass Challenge plates feature the Pan-Mass Challenge logo and the words “Share the Road”. Proceeds from this plate benefit the Pan-Mass Challenge.

Eligibility: Anyone can obtain Pan-Mass Challenge plates.

Fees: <https://www.mass.gov/doc/rmv-schedule-of-fees/download>

The special plate fee is \$40.

The initial special plate fee is distributed as follows...

- \$12 covers the cost of manufacturing the plate
- \$28 goes to the designated organization

Upon renewal, the entire special plate fee goes to the designated organization.

Renewal: The plates need to be renewed every two years.

Available At: Pan-Mass Challenge plates can be ordered online at www.Mass.Gov/RMV. They can also be ordered at any RMV Service Center or any Dealership that is part of the Electronic Vehicle Registration program. A temporary plate will be provided and the permanent plates will be mailed.

Plate Type: Example: PAS PM1234, PM123A



PLYMOUTH 400

Plymouth 400 plates feature a Native American in front of the Mayflower. Proceeds from this plate benefit Plymouth 400 Inc.

Eligibility: Anyone can obtain Plymouth 400 plates.

Fees: <https://www.mass.gov/doc/rmv-schedule-of-fees/download>

The special plate fee is \$40.

The initial special plate fee is distributed as follows...

- \$12 covers the cost of manufacturing the plate
- \$28 goes to the designated organization

Upon renewal, the entire special plate fee goes to the designated organization.

Renewal: The plates need to be renewed every two years.

Available At: Plymouth 400 plates can be ordered online at www.Mass.Gov/RMV. They can also be ordered at any RMV Service Center or any Dealership that is part of the Electronic Vehicle Registration program. A temporary plate will be provided and the permanent plates will be mailed.

Plate Type: Example: PAS PL1234, PL123A



New Design of
Red Sox/Jimmy
Fund plates
beginning 2023



RED SOX/JIMMY FUND

Red Sox plates feature the team's logo. Proceeds from the Red Sox plate go to the Jimmy Fund.

Eligibility: Anyone can obtain Red Sox plates.

Fees: <https://www.mass.gov/doc/rmv-schedule-of-fees/download>

The special plate fee is \$40.

The initial special plate fee is distributed as follows...

- \$12 covers the cost of manufacturing the plate
- \$28 goes to the designated organization

Upon renewal, the entire special plate fee goes to the designated organization.

Renewal: The plates need to be renewed every two years.

Available At: Red Sox plates can be ordered online at www.Mass.Gov/RMV. They can also be ordered at any RMV Service Center or any Dealership that is part of the Electronic Vehicle Registration program. A temporary plate will be provided and the permanent plates will be mailed.

Plate Type: Example: PAS RS1234, RS123A



REGISTERED NURSE

Registered Nurse plates feature an image of the registered nurse symbol and the words “Advancing Health” at the bottom of the plate. Proceeds from this plate benefit the ONL Association for Nursing Leadership, Science and Education, Inc.

Eligibility: Anyone can obtain Registered Nurse plates.

Fees: <https://www.mass.gov/doc/rmv-schedule-of-fees/download>

The special plate fee is \$40.

The initial special plate fee is distributed as follows...

- \$12 covers the cost of manufacturing the plate
- \$28 goes to the designated organization

Upon renewal, the entire special plate fee goes to the designated organization.

Renewal: The plates need to be renewed every two years.

Available At: Registered Nurse plates can be ordered online at www.Mass.Gov/RMV. They can also be ordered at any RMV Service Center or any Dealership that is part of the Electronic Vehicle Registration program. A temporary plate will be provided and the permanent plates will be mailed.

Plate Type: Example: PAS RN1234, RN123A



NOTE: There are approximately 2350 Right Whale plates actively on the road that were manufactured without the RW on the plate and also were issued with five digits.

Replacement plates cannot be ordered for these plates.



RIGHT WHALE/ROSEATE TERN

The Right Whale and Roseate Tern plates feature a tail of a right whale and two roseate terns. Proceeds from this plate go to the Environmental Trust Fund, which provides grants for education and to preserve the Massachusetts environment.

Eligibility: Anyone can obtain Right Whale or Roseate Tern plates.

Fees: <https://www.mass.gov/doc/rmv-schedule-of-fees/download>

The special plate fee is \$40.

The initial special plate fee is distributed as follows...

- \$12 covers the cost of manufacturing the plate
- \$28 goes to the designated organization

Upon renewal, the entire special plate fee goes to the designated organization.

Renewal: The plates need to be renewed every two years.

Available At: Right Whale and Roseate Tern plates can be ordered online at www.Mass.Gov/RMV. They can also be ordered at any RMV Service Center or any Dealership that is part of the Electronic Vehicle Registration program. A temporary plate will be provided and the permanent plates will be mailed.

Plate Type: Example: PAS RW1234, RT1234, RT123A, RW123A



STATE POLICE ASSOCIATION OF MASSACHUSETTS

State Police Association of Massachusetts plates feature an image of an American flag and a blue police ribbon with the words "Protect and Serve" at the bottom of the plate. The previous design featured an image of a State Police Trooper hat. Proceeds from this plate benefit the State Police Association of Massachusetts Benevolent Fund.

Eligibility: Anyone can obtain State Police Association of Massachusetts plates.

Fees: <https://www.mass.gov/doc/rmv-schedule-of-fees/download>

The special plate fee is \$40.

The initial special plate fee is distributed as follows...

- \$12 covers the cost of manufacturing the plate
- \$28 goes to the designated organization

Upon renewal, the entire special plate fee goes to the designated organization.

Renewal: The plates need to be renewed every two years.

Available At: State Police Association of Massachusetts plates can be ordered online at www.Mass.Gov/RMV. They can also be ordered at any RMV Service Center or any Dealership that is part of the Electronic Vehicle Registration program. A temporary plate will be provided and the permanent plates will be mailed.

Plate Type: Example: PAS PS1234, PS123A



STRIPED BASS

Striped Bass plates feature an image of several striped bass and the words “Striped Bass Conservation” at the bottom of the plate. Proceeds from this plate benefit the Environmental Trust Fund, which provides grants for education and to preserve the Massachusetts environment.

Eligibility: Anyone can obtain Striped Bass plates.

Fees: <https://www.mass.gov/doc/rmv-schedule-of-fees/download>

The special plate fee is \$40.

The initial special plate fee is distributed as follows...

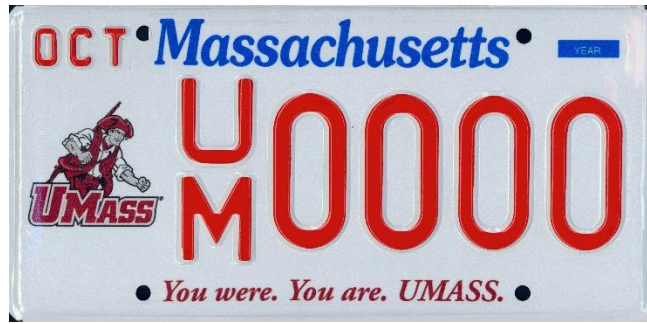
- \$12 covers the cost of manufacturing the plate
- \$28 goes to the designated organization

Upon renewal, the entire special plate fee goes to the designated organization.

Renewal: The plates need to be renewed every two years.

Available At: Striped Bass plates can be ordered online at www.Mass.Gov/RMV. They can also be ordered at any RMV Service Center or any Dealership that is part of the Electronic Vehicle Registration program. A temporary plate will be provided and the permanent plates will be mailed.

Plate Type: Example: PAS SC1234, SC123A



UMASS

UMASS plates feature an image of the UMASS Minuteman logo. The bottom of the plate reads “You were. You are. UMASS” in red colored text. Proceeds from this plate benefit the UMASS Alumni Association, Inc.

Eligibility: Anyone can obtain UMASS plates.

Fees: <https://www.mass.gov/doc/rmv-schedule-of-fees/download>

The special plate fee is \$40.

The initial special plate fee is distributed as follows...

- \$12 covers the cost of manufacturing the plate
- \$28 goes to the designated organization

Upon renewal, the entire special plate fee goes to the designated organization.

Renewal: The plates need to be renewed every two years.

Available At: UMASS plates can be ordered online at www.Mass.Gov/RMV. They can also be ordered at any RMV Service Center or any Dealership that is part of the Electronic Vehicle Registration program. A temporary plate will be provided and the permanent plates will be mailed.

Plate Type: Example: PAS UM1234, UM123A, UM12AB



Plates 1001 - 1200 were issued to the victims' families with a special decal that reads "Remember" affixed to the plate.

UNITED WE STAND

United We Stand plates feature an American flag in the background. Proceeds from this plate go to the Massachusetts 9/11 Fund and to the Commonwealth Security Trust Fund...

- 50% 9/11 Fund: to assist the relatives of Massachusetts victims of the September 11, 2001 terrorist attacks on America or to establish a permanent memorial to such Massachusetts victims, with at least 25 % dedicated to the design, construction, and maintenance of the memorial; and
- 25% Commonwealth Security Fund: is to be used to provide grants to local police and fire departments to enhance emergency response, including response to acts of terrorism, and towards the design, construction, and maintenance of memorials dedicated to the law enforcement officers and firefighters of Massachusetts who are killed in the line of duty
- 25% Military Heroes Fund: the Massachusetts Military Heroes Fund is a private, non-profit 501 (c) (3) organization dedicated to providing support, programs, and services to the families of military service personnel from Massachusetts fallen in service to the United States in, as a result of, or in support of, Operations Enduring Freedom, Noble Eagle and Iraqi Freedom.

Eligibility: Anyone can obtain United We Stand plates.

Fees: <https://www.mass.gov/doc/rmv-schedule-of-fees/download>

The special plate fee is \$40.

The initial special plate fee is distributed as follows...

- \$12 covers the cost of manufacturing the plate
- \$28 goes to the designated organization

Upon renewal, the entire special plate fee goes to the designated organization.

Renewal: The plates need to be renewed every two years.

Available At: United We Stand plates can be ordered online at www.Mass.Gov/RMV. They can also be ordered at any RMV Service Center or any Dealership that is part of the Electronic Vehicle Registration program. A temporary plate will be provided and the permanent plates will be mailed.

Plate Type: Example: PAS US1234, US123A



WELCOME HOME

Welcome Home plates feature an image of a house and the words “Welcome Home” at the bottom of the plate. Proceeds from this plate benefit The Massachusetts Association of Realtors Charitable Foundation.

Eligibility: Anyone can obtain Welcome Home plates.

Fees: <https://www.mass.gov/doc/rmv-schedule-of-fees/download>

The special plate fee is \$40.

The initial special plate fee is distributed as follows...

- \$12 covers the cost of manufacturing the plate
- \$28 goes to the designated organization

Upon renewal, the entire special plate fee goes to the designated organization.

Renewal: The plates need to be renewed every two years.

Available At: Welcome Home plates can be ordered online at www.Mass.Gov/RMV. They can also be ordered at any RMV Service Center or any Dealership that is part of the Electronic Vehicle Registration program. A temporary plate will be provided and the permanent plates will be mailed.

Plate Type: Example: PAS WH1234, WH123A



ZOO NEW ENGLAND

Zoo New England plates feature an image of a gorilla and the words “Zoo New England” at the bottom of the plate. Proceeds from this plate benefit Zoo New England’s conservation programs to save wildlife and wild places in Massachusetts.

Eligibility: Anyone can obtain Zoo New England plates.

Fees: <https://www.mass.gov/doc/rmv-schedule-of-fees/download>

The special plate fee is \$40.

The initial special plate fee is distributed as follows...

- \$12 covers the cost of manufacturing the plate
- \$28 goes to the designated organization

Upon renewal, the entire special plate fee goes to the designated organization.

Renewal: The plates need to be renewed every two years.

Available At: Zoo New England plates can be ordered online at www.Mass.Gov/RMV. They can also be ordered at any RMV Service Center or any Dealership that is part of the Electronic Vehicle Registration program. A temporary plate will be provided and the permanent plates will be mailed.

Plate Type: Example: PAS ZN1234, ZN123A

GOVERNMENT PLATES



GOVERNOR'S COUNCIL

Eligibility:	Governor's Council plates are issued to elected members of the Governor's Council. A Massachusetts state-issued ID is required. A letter is required from the Speaker of the House to assign the plate number.
Fees:	https://www.mass.gov/doc/rmv-schedule-of-fees/download
Renewal:	The plates need to be renewed every year.
Available At:	Governor's Council plates are only available through the Special Plates Department. For more information on Governor's Council plates, the customer can call the Special Plates Department at 857-368-8031.
Plate Type:	Example: PAS GC1234



HONORARY CONSULAR

- Eligibility:** Honorary Consular plates are issued to a private individual who is authorized to perform limited functions on behalf of a foreign government. Proper documentation is required.
- Fees:** <https://www.mass.gov/doc/rmv-schedule-of-fees/download>
- Renewal:** The plates need to be renewed every year.
- Available At:** By agreement with the RMV, these plates are approved by the Dean of the Honorary Consular Corps, currently the Honorary Consul of Finland and issued by the Special Plates Department. The customer can call the Honorary Consular Corps at 617-654-1701 for more information.
- Plate Type:** Example: PAS CONS12



HOUSE

- Eligibility:** House plates are issued to elected members of the Massachusetts House of Representatives. Massachusetts State-issued ID is required. A letter is required from the Speaker of the House to assign the plate number.
- Fees:** <https://www.mass.gov/doc/rmv-schedule-of-fees/download>
- Renewal:** The plates need to be renewed every year.
- Available At:** House plates are only available through the Special Plates Department. For more information on House plates, the customer can call the Special Plates Department at 857-368-8031.
- Plate Type:** Example: PAS HOUS12



SENATE

- Eligibility:** Senate plates are issued to elected members of the Massachusetts State Senate. A Massachusetts state-issued ID is required. A letter is required from the Speaker of the House to assign the plate number.
- Fees:** <https://www.mass.gov/doc/rmv-schedule-of-fees/download>
- Renewal:** The plates need to be renewed every year.
- Available At:** Senate plates are only available through the Special Plates Department. For more information on Senate plates, the customer can call the Special Plates Department at 857-368-8031.
- Plate Type:** Example: PAS SENAT12



UNITED STATES CONGRESS

Eligibility: US Congress plates are issued to elected members of the US House of Representatives. A US Government-issued ID is required. A letter is required from the Speaker of the House to assign the plate number.

Fees: <https://www.mass.gov/doc/rmv-schedule-of-fees/download>

Renewal: The plates need to be renewed every year.

Available At: US Congress plates are only available through the Special Plates Department. For more information on US Congress plates, the customer can call the Special Plates Department at 857-368-8031.

Plate Type: Example: PAS USC123



UNITED STATES SENATE

- Eligibility:** US Senate plates are issued to elected members of the US Senate. A US Government-issued ID is required. A letter is required from the Speaker of the House to assign the plate number.
- Fees:** <https://www.mass.gov/doc/rmv-schedule-of-fees/download>
- Renewal:** The plates need to be renewed every year.
- Available At:** US Senate plates are only available through the Special Plates Department. For more information on US Senate plates, the customer can call the Special Plates Department at 857-368-8031.
- Plate Type:** Example: PAS USS123

MEDICAL / DISABILITY PLATES



DISABILITY

The Disability plate features the universal disabled symbol on the left side of the plate.

Eligibility:

Applicants must complete an [Application for Disabled Parking Placard/Plate](#) and submit it to RMV Medical Affairs at the address listed on the top of the application.

An application can be downloaded from Mass.Gov/RMV or requested by mail by calling 857-368-8000.

Applicants must meet one of the following requirements...

- Unable to walk 200 feet without assistance
- Legally blind
- Chronic lung disease
- Cardiovascular disease
- Arthritis
- Loss of or permanent loss of use of a limb

Refer to the Application for Disabled Parking Placard/Plate for detailed information.

Fees:

<https://www.mass.gov/doc/rmv-schedule-of-fees/download>

Renewal:

The plates need to be renewed every two years.

Available At:

Disability plates are issued through the RMV's Special Plates Department with a letter of approval from Medical Affairs and a completed Registration and Title Application (RTA), including an insurance company stamp.

Plate Type:

Example: PAS HP1234



Older Design of Disabled Veterans Plate issued prior to 2005



New Design of Disabled Veterans Plate issued 2005

DISABLED VETERAN

The previously issued Disabled Veteran plate features six stars on the left side of the plate and red and white stripes on the right side of the plate. The newly issued Disabled Veteran plate features the American flag and the universal disabled symbol on the left side of the plate.

Eligibility:

Disabled Veteran plates are issued only to qualified Massachusetts resident veterans who are the primary owner of a registered passenger vehicle and who meet the following three conditions:

1. Qualify for permanent Disabled Parking Privileges
2. Have a minimum of a 60% service-connected disability rating as determined by the VA and listed on the disability breakdown letter.
3. One or a combination of listed services connected disabilities totaling 60% must be conditions that affect ambulation and would qualify for disabled parking privileges. Conditions that do not affect ambulation may not be considered for this condition.

The customer must complete an [Application for Disabled Parking Placard/Plate](#) and submit a letter from the US Veterans' Administration stating that the 80% disability is service connected. All inquiries on eligibility should be made to RMV Medical Affairs at 857-368-8020.

Fees:

There is no fee.

Renewal:

The plates need to be renewed every two years.

Available At: Disabled Veterans' plates are issued through the RMV's Special Plates Department with a letter of approval from Medical Affairs and a completed Registration and Title Application (RTA), including an insurance company stamp.

Plate Type: Example: PAS DV1234

Disabled Veteran Fee Exemptions:

The Massachusetts HERO Act exempts disabled veterans from paying the following fees:

- **Registration fees for any/all vehicle registration(s)**, with the following exceptions:
 - Special plate fees ARE required for special plates
 - Reinstatement fees ARE required
 - Title and sales tax fees ARE required
 - The disabled veteran MUST be listed as one of the owners
- **Driver's license transaction fees (for all license classes)**, with the following exceptions:
 - Permit and road test fees ARE required
 - Mass ID and Liquor ID fees ARE required
 - Reinstatement fees ARE required
 - Professional credential fees ARE required
- **Excise tax for one passenger vehicle or pick-up truck.** The vehicle must be owned by the veteran and be used for non-commercial purposes.

Eligibility for these fee exemptions is based on a disability determination by the United States Department of Veterans Affairs (VA). Veterans will qualify for all these exemptions if the VA determines they have a 100% disability rating or deems them unemployable due to their service-connected disability.



EMERGENCY VEHICLE

Emergency plates feature a red background with white lettering.

Eligibility:	Emergency plates are issued to charitable organizations for special purpose motor vehicles or trailers and used for the benefit of fireman, policemen, civil defense workers, and victims of fires and disasters. To obtain information and apply for Emergency Vehicle Plates, contact Enforcement Services at 857-368-9500.
Fees:	There is no fee.
Renewal:	The plates need to be renewed every year.
Available At:	Emergency Vehicle plates are only available through Enforcement Services at 857-368-9500.
Plate Type:	Example: PAS EMR123



MEDICAL DOCTOR (MD)

Medical Doctor (MD) plates feature the initials MD on the left side of the plate.

Eligibility: MD plates are issued to Massachusetts's residents who are licensed to practice medicine in the Commonwealth of Massachusetts. An *Application for MD Plates* must be completed and certified by:

Board of Registration in Medicine
560 Harrison Ave
Boston, MA 02118

Fees: <https://www.mass.gov/doc/rmv-schedule-of-fees/download>

Renewal: The plates need to be renewed every two years.

Available At: MD plates can be ordered through the Special Plates Department or at any RMV Service Center. An application can be downloaded from Mass.Gov/RMV or requested by mail by calling 857-368-8000. A temporary plate will be provided and the permanent plates will be mailed.

Plate Type: Example: PAS MD1234

MILITARY PLATES



BRONZE STAR

Bronze Star plates feature a replica of a Bronze Star medal.

NOTE: For **Active Duty Members of the Military**, the word **Veteran** on the plate will be covered by a decal that is labeled **Active Duty**.

Eligibility:

Veterans: Bronze Star plates are issued to veterans who have been awarded the Bronze Star medal. An *Application for Veterans' License Plates* must be completed. A Bronze Star recipient must prove that he/she has been awarded the Bronze Star medal. Along with the completed application, the customer must submit a photocopy of one of the following documents to the Special Plates Department:

- A DD-214 that indicates "Honorable" in the Character of Service box (which will not always be located in the same place on the form).
Note that only the long form (full page) DD-214 is acceptable; the short form (halfpage) cannot be accepted.
- A DD-215 (which is an amended version of the DD-214) that indicates an honorable discharge.
- An Honorable Discharge form (this was used during WWII and the Korean War).

Regardless of what document is presented, it must state Honorably Discharged and awarded medal.

Active Duty Members of the Military:

To be eligible for these plates, a customer must be on active military duty in the U.S. Army, Navy, Marines, Air Force, or Coast Guard (including National Guard or Reserve on active duty) at the time of application and he/she must have been awarded the medal for the plate he/she is applying for. Along with the completed application, the customer must send the following documentation to the Special Plates Department:

- A photocopy of his/her current vehicle registration

- A photocopy of his/her current Military ID Card (and a document to satisfy his/her “active duty” status if not on the Card)
- A photocopy of the document awarding him/her the specific medal for the plate being applied for

Bronze Star recipients are eligible for one set of plates for each Bronze Star he/she received.

Fees: There is no fee.

Renewal: The plates need to be renewed every two years.

Available At: Bronze Star plates are available online at www.Mass.Gov/RMV, through the Special Plates Department, or at any RMV Service Center. For more information on Bronze Star plates, the customer can call the Special Plates Department at 857-368-8031.

Plate Type: Example: PAS VB1234, VB11A



CONGRESSIONAL MEDAL OF HONOR

Congressional Medal of Honor plates feature six stars on the left and right side of the plate.

Eligibility:

Congressional Medal of Honor plates are issued to veterans who have received the Congressional Medal of Honor. An *Application for Veterans' License Plates* must be completed. Claims of this award are verified through the Department of Veterans' Services by Special Plates. Along with the completed application, the customer must submit a photocopy of one of the following documents to the Special Plates Department:

- A DD-214 that indicates "Honor able" in the Character of Service box (which will not always be located in the same place on the form).
Note that only the long form (full page) DD-214 is acceptable; the short form (halfpage) cannot be accepted.
- A DD-215 (which is an amended version of the DD-214) that indicates an honor able discharge.
- An Honor able Discharge form (this was used during WWII and the Korean War).

Regardless of which document is presented, the document must state Honor ably Discharged and awarded medal.

Fees:

There is no fee.

Renewal:

The plates need to be renewed every two years.

Available At:

Congressional Medal of Honor plates are available online at www.Mass.Gov/RMV, through the Special Plates Department, or at any RMV Service Center. For more information on Congressional Medal of Honor plates, the customer can call the Special Plates Department at 857-368-8031.

Plate Type:

Example: PAS CMH12



DISTINGUISHED FLYING CROSS

The Distinguished Flying Cross plate features a replica of a Distinguished Flying Cross medal located on the left side of the plate with the word “Veteran” written at the bottom.

NOTE: For **Active Duty Members of the Military**, the word **Veteran** on the plate will be covered by a decal that is labeled **Active Duty**.

Eligibility:

Veterans: Distinguished Flying Cross plates are issued to veterans who have been awarded the Distinguished Flying Cross while serving in any capacity within the Armed Forces.

- A DD-214 that indicates “Honor able” in the Character of Service box (which will not always be located in the same place on the form).
Note that only the long form (full page) DD-214 is acceptable; the short form (halfpage) cannot be accepted.
- A DD-215 (which is an amended version of the DD-214) that indicates an honor able discharge.
- An Honor able Discharge form (this was used during WWII and the Korean War).

Regardless of what document is presented, it must state Honor ably Discharged and awarded medal.

Active Duty Members of the Military:

To be eligible for these plates, a customer must be on active military duty in the U.S. Army, Navy, Marines, Air Force, or Coast Guard (including National Guard or Reserve on active duty) at the time of application and he/she must have been awarded the medal for the plate he/she is applying for. Along with the completed application, the customer must send the following documentation to the Special Plates Department:

- A photocopy of his/her current vehicle registration
- A photocopy of his/her current Military ID Card (and a document to satisfy his/her “active duty” status if not on the Card)
- A photocopy of the document awarding him/her the specific medal for the plate being applied for

Distinguished Flying Cross recipients are eligible for one set of plates for each Distinguished Flying Cross he or she received.

Fees: There is no fee.

Renewal: The plates need to be renewed every two years.

Available At: Distinguished Flying Cross plates are available online at www.Mass.Gov/RMV, through the Special Plates Department, or at any RMV Service Center. For more information on Distinguished Flying Cross plates, the customer can call the Special Plates Department at 857-368-8031.

Plate Type: Example: PAS DF1000



EX-POW

Ex-POW plates feature barbed wire on the left side of the plate.

Eligibility:

Ex-POW plates are issued to former prisoners of war. To be eligible for Ex-POW plates, the customer must present one of the following documents indicating Ex-POW status to a full service RMV branch to prove his/her Ex-POW status...

- A DD-214 that indicates "Honor able" in the Character of Service box (which will not always be located in the same place on the form).
Note that only the long form (full page) DD-214 is acceptable; the short form (halfpage) cannot be accepted.
- A DD-215 (which is an amended version of the DD-214) that indicates an honor able discharge.
- An Honor able Discharge form (this was used during WWII and the Korean War).
- Statement of Service from the US Veterans' Administration

Ex-Prisoners of War are eligible for one set of plates.

Fees:

There is no fee.

Renewal:

The plates need to be renewed every two years.

Available At:

Ex-POW plates are available online at www.Mass.Gov/RMV, through the Special Plates Department, or at any RMV Service Center. For more information on Ex-POW plates, the customer can call the Special Plates Department at 857-368-8031.

Plate Type:

Example: PAS XPOW12



GOLD STAR FAMILY

Gold Star plates feature a gold star on the left side of the plate with the words “Gold Star Family” written at the bottom.

Eligibility:

Gold Star Family Plates can be issued, without charge, to spouses, parents, children, siblings, grandparents, and grandchildren of members of the United States Armed Forces who died while on active duty with the United States Armed Forces or whose death occurred due to injury sustained, illness, or disease contracted, not due to gross negligence or misconduct of the member, during active service.

Each qualifying applicant can register one private passenger motor vehicle owned and principally used by that person or one motor vehicle that is owned by a partnership, trust, or corporation if the motor vehicle otherwise meets the criteria of a private passenger vehicle, there is no distinctive promotional or advertisement marking visible on the motor vehicle, and the motor vehicle is principally used by that person.

Step-parents, step-children, step-siblings, step-grandparents, and step-grandchildren are not eligible unless a legal adoption occurred prior to the time of death.

An [Application for Gold Star Family Plates](#) must be completed. The customer must also present one of the following...

- A casualty report
- A telegram for military members who served in WWII and/or the Korean War
- An overseas death certificate issued by the military indicating name and date of death

Killed in Action (KIA) Decals

A KIA decal can be issued for the plate if the deceased was killed in action. This will be indicated on the casualty report.

Gold Star Family Vanity Plates

Gold Star Family Vanity Plates are also available. These have the same qualifications as standard vanity plates and begin with a prefix of "GS".

Fees: There is no fee.

Renewal: The plates need to be renewed every two years.

Available At: Gold Star Family plates are available online at www.Mass.Gov/RMV, through the Special Plates Department, or at any RMV Service Center. They can also be applied for at any Dealership that is part of the Electronic Vehicle Registration program. An application can be downloaded from Mass.Gov/RMV or requested by mail by calling 857-368-8000.

Gold Star Family Vanity Plates can only be ordered online.

Plate Type: Example: PAS GS1000



LEGION OF VALOR

Eligibility:

Legion of Valor plates are issued to members of the Legion of Valor of the USA, Inc. Legion of Valor Members are recipients of the following medals...

- Medal of Honor
- Distinguished Service Cross
- Navy Cross
- Air Force Cross

Along with an [Application for Awarded Medal Veterans' Plates](#), one of the following documents indicating *award* is needed.

- A DD-214 that indicates "Honor able" in the Character of Service box (which will not always be located in the same place on the form).
Note that only the long form (full page) DD-214 is acceptable; the short form (halfpage) cannot be accepted.
- A DD-215 (which is an amended version of the DD-214) that indicates an honor able discharge.
- An Honor able Discharge form (this was used during WWII and the Korean War).

Regardless of what document is presented, it must state Honor ably Discharged and awarded medal.

Legion of Valor members are eligible for one set of plates.

Fees:

There is no fee.

Renewal:

The plates need to be renewed every year.

Available At:

Legion of Valor plates are available online at www.Mass.Gov/RMV, through the Special Plates Department, or at any RMV Service Center. For more information on Legion of Valor plates, the customer can call the Special Plates Department at 857-368-8031.

Plate Type:

Example: PAS LV123



MEDAL OF LIBERTY

Medal of Liberty plates feature an image of the Medal of Liberty and the words “Medal of Liberty” at the bottom of the plate.

Eligibility:

Medal of Liberty Plates can be issued to the **approved** Next of Kin (NOK) of service men and women from Massachusetts who were killed in action or died in service while in a designated combat area in the line of duty or who died as a result of wounds received in action.

The approved NOK recipient of the Medal of Liberty can register one private passenger motor vehicle owned and principally used by him/her.

Customers who receive the Medal of Liberty are entitled to receive the Medal of Liberty Plate free of charge.

An Application for Medal of Liberty Plates must be completed. The customer must also present the following...

- An approved **Recommendation for the Massachusetts Medal of Liberty** form (TAGMA form 3367) certified by the Office of the Adjutant General. See sample: <https://www.mass.gov/doc/klv-sample-recommendation-for-medal-of-liberty/download>

Killed in Action (KIA) Decals

A KIA decal can be issued upon request.

Fees:

There is no fee.

Renewal:

The plates need to be renewed every two years.

Available At:

Medal of Liberty plates are available online at www.Mass.Gov/RMV or can be applied for by mail. An

application can be downloaded from Mass.Gov/RMV or requested by mail by calling 857-368-8000.

Plate Type: Example: PAS ML1000



NATIONAL GUARD

National Guard plates feature an image of a National Guard soldier.

Eligibility: National Guard plates are issued to anyone who serves in the Massachusetts National Guard who has a rank equal to or higher than an E2 rating. An [Application for Massachusetts National Guard Plates](#) must be completed and stamped by the National Guard

National Guard members are eligible for one set of plates for each vehicle registered.

Fees: <https://www.mass.gov/doc/rmv-schedule-of-fees/download>

Renewal: The plates need to be renewed every two years.

Available At: National Guard plates are available online at www.Mass.Gov/RMV, through the Special Plates Department, or at any RMV Service Center. An application can be downloaded from Mass.Gov/RMV or requested by mail by calling 857-368-8000.

All inquiries on National Guard plate eligibility can be made to Command Sergeant Major (CSM) at 508-233-6508 or...
Office of State Command Sergeant Major
Massachusetts National Guard Headquarters
50 Maple Street
Milford, MA 01757

Plate number(s) 1 - 99 are assigned by the Massachusetts National Guard.

Plate Type: Example: PAS NG1234



PEARL HARBOR SURVIVOR

Pearl Harbor Survivor plates feature a replica of an eagle.

Eligibility:

Pearl Harbor Survivor plates are issued to veterans who served in Pearl Harbor on December 7, 1941. An [Application for Awarded Medal Veterans' Plates](#) must be completed. The Pearl Harbor Survivor must prove that he/she served in Pearl Harbor on that day. Along with the completed application, the customer must submit a Pearl Harbor Association membership card and a photocopy of one of the following documents to the Special Plates Department...

- A DD-214 that indicates "Honorable" in the Character of Service box (which will not always be located in the same place on the form).
Note that only the long form (full page) DD-214 is acceptable; the short form (halfpage) cannot be accepted.
- A DD-215 (which is an amended version of the DD-214) that indicates an honorable discharge.
- An Honorable Discharge form (this was used during WWII and the Korean War).
- Statement of Service from the US Veterans' Administration
- Pearl Harbor Association membership card

Regardless of what document is presented, it must state Honorably Discharged and awarded medal.

Pearl Harbor Survivors are eligible for one set of plates.

Fees:

There is no fee.

Renewal:

The plates need to be renewed every two years.

Available At: Pearl Harbor Survivor plates are available online at www.Mass.Gov/RMV, through the Special Plates Department, or at any RMV Service Center. For more information on Pearl Harbor Survivor plates, the customer can call the Special Plates Department at 857-368-8031.

Plate Type: Example: PAS VTPH12, VTPJ12, VTPK12



New wording

PURPLE HEART

Purple Heart plates feature a replica of a Purple Heart medal.

NOTE: For **Active Duty Members of the Military**, the word **Veteran** on the plate will be covered by a decal that is labeled **Active Duty**.

Eligibility:

Veterans: Purple Heart plates are issued to veterans who have been awarded the Purple Heart medal. A Purple Heart recipient must prove that he/she has been awarded the Purple Heart. The customer must present one of the following documents to a full service RMV branch...

- A DD-214 that indicates "Honorable" in the Character of Service box (which will not always be located in the same place on the form).
Note that only the long form (full page) DD-214 is acceptable; the short form (halfpage) cannot be accepted.
- A DD-215 (which is an amended version of the DD-214) that indicates an honorable discharge.
- An Honorable Discharge form (this was used during WWII and the Korean War).

Regardless of what document is presented, it must state Honorably Discharged and awarded medal.

Active Duty Members of the Military:

To be eligible for these plates, a customer must be on active military duty in the U.S. Army, Navy, Marines, Air Force, or Coast Guard (including National Guard or Reserve on active duty) at the time of application and he/she must have been awarded the medal for the plate he/she is applying for. Along with the completed application, the customer must send the following documentation to the Special Plates Department:

- A photocopy of his/her current vehicle registration
- A photocopy of his/her current Military ID Card (and a document to satisfy his/her “active duty” status if not on the Card)
- A photocopy of the document awarding him/her the specific medal for the plate being applied for

Purple Heart recipients are eligible for one set of plates for each Purple Heart he/she received.

Fees: There is no fee.

Renewal: The plates need to be renewed every two years.

Available At: Purple Heart plates can be applied for online at www.Mass.Gov/RMV. They can also be applied for at any RMV Service Center. A temporary plate will be provided and the permanent plates will be mailed.

Plate Type: Example: PAS PH1234



SILVER STAR

Silver Star plates feature a replica of a Silver Star medal.

NOTE: For **Active Duty Members of the Military**, the word **Veteran** on the plate will be covered by a decal that is labeled **Active Duty**.

Eligibility:

Veterans: Silver Star plates are issued to veterans who have been awarded the Silver Star medal. An [Application for Awarded Medal Veterans' Plates](#) must be completed. A Silver Star recipient must prove that he/she has been awarded the Silver Star medal. Along with the completed application, the customer must submit a photocopy of one of the following documents to the Special Plates Department:

- A DD-214 that indicates "Honorable" in the Character of Service box (which will not always be located in the same place on the form).
Note that only the long form (full page) DD-214 is acceptable; the short form (halfpage) cannot be accepted.
- A DD-215 (which is an amended version of the DD-214) that indicates an honorable discharge.
- An Honorable Discharge form (this was used during WWII and the Korean War).

Regardless of what document is presented, it must state Honorably Discharged and awarded medal.

Active Duty Members of the Military:

To be eligible for these plates, a customer must be on active military duty in the U.S. Army, Navy, Marines, Air Force, or Coast Guard (including National Guard or Reserve on active duty) at the time of application and he/she must have been awarded the medal for the plate he/she is applying for. Along with the completed application, the customer must send the following documentation to the Special Plates Department:

- A photocopy of his/her current vehicle registration
- A photocopy of his/her current Military ID Card (and a document to satisfy his/her “active duty” status if not on the Card)
- A photocopy of the document awarding him/her the specific medal for the plate being applied for

Silver Star recipients are eligible for one set of plates for each Silver Star medal he/she received.

Fees: There is no fee.

Renewal: The plates need to be renewed every two years.

Available At: Silver Star plates are available online at www.Mass.Gov/RMV, through the Special Plates Department, or at any RMV Service Center. For more information on Silver Star plates, the customer can call the Special Plates Department at 857-368-8031.

Plate Type: Example: PAS VS1234, VS1AA



VETERANS' PLATES

Veterans' plates display the word "Veteran" and are issued to veterans who served in time of war. Proceeds from this plate go to the Chelsea and Holyoke Soldier's Homes.

A Veteran would be required to have either ...

- 180 days of regular active duty service (enlisted or drafted service) and a last discharge or release under honorable conditions (does not include training)
- 90 days of active duty service (Reservists or National Guard), one day of which is during "wartime" and a last discharge or release under honorable conditions (does not include training)

Veterans' plates may have either four or five digits. Branch of Service and War Time decals are available for this plate. If a Branch of Service or War Time decal were requested, it would be affixed to the plate without the flag.

Eligibility: To prove eligibility for Veterans Plates, customers must prove that they received an honorable discharge from military service. Any of the following documents are acceptable proof of honorable discharge:

- A DD-214 that indicates "Honorable" in the Character of Service box (which will not always be located in the same place on the form).
Note that only the long form (full page) DD-214 is acceptable; the short form (halfpage) cannot be accepted.
- A DD-215 (which is an amended version of the DD-214) that indicates an honorable discharge.
- An Honorable Discharge form (this was used during WWII and the Korean War).

In order to be acceptable, the information on the form presented must be typed (never handwritten).

For more information on how to obtain these documents, please call the US Veterans' Administration at 800-827-1000.

Veterans are eligible for one set of plates for each vehicle registered in their name.

Fees: <https://www.mass.gov/doc/rmv-schedule-of-fees/download>

The special plate fee is \$40.

The initial special plate fee is distributed as follows...

- \$12 covers the cost of manufacturing the plate
- \$28 goes to the designated organization

Upon renewal, the entire special plate fee goes to the designated organization.

Renewal: The plates must be renewed every two years.

Available At: Veterans' plates are available online at www.Mass.Gov/RMV or at any RMV Service Center. They can also be applied for at any Dealership that is part of the Electronic Vehicle Registration program. An application can be downloaded from Mass.Gov/RMV or requested by mail by calling 857-368-8000.

Plate Type: Example: PAS VT1234, VT123A, VT12345

UNCHARACTERIZED DISCHARGE

What does an “Uncharacterized Discharge” Mean?

An “**Uncharacterized Discharge**” from military service is one which ***is not*** any of the following:

- Honorable
- General
- Dishonorable

It is usually used for entry-level separations (ELS), or separations from the military in the first 180 days of service.

Branch Procedure

The discharge documents that would list “Uncharacterized Discharge” are:

- DD-214
- DD-215

When verifying the DD-214 and DD-215 for Veteran status, if you see “Uncharacterized Discharge” in the Character of Service box, then the customer ***is not*** eligible for Veterans’ plates or for the Veterans’ Indicator on a license or ID.

If a customer believes he or she was honorably discharged, but his/her discharge documents list an “Uncharacterized Discharge,” he/she should be advised to get this corrected through the

U.S. Veterans Affairs Department
15 New Sudbury St #15
Boston, MA 02203
(617) 210-5765

VETERANS' BRANCH OF SERVICE DECALS

These are available for both Veterans' (FLAG) passenger and motorcycle plates.



Army



Navy



Coast Guard



Marines



Airforce

VETERANS' WAR TIME DECALS

These are available for passenger vehicles only.



OTHER PLATES



ANTIQUE

Eligibility: Any vehicle that is over 25 years old and maintained solely for use in exhibitions, club activities, parades, and other functions of public interest (this includes drives to prepare for such functions and transportation to and from the repair shop) is eligible for antique plates.

Fees: <https://www.mass.gov/doc/rmv-schedule-of-fees/download>

Renewal: The plates need to be renewed every year.

Available At: Antique plates can be ordered through the Special Plates Department or at any RMV Service Center (an appointment is required and can be scheduled at: [atlas-myrmv.massdot.state.ma.us/myrmv/ #1](https://atlas-myrmv.massdot.state.ma.us/myrmv/#1)).

An [*Application for Antique Motor Vehicle or Year of Manufacture Plates*](#) must be notarized before submission to the Registry.

An application can be downloaded from Mass.Gov/RMV or requested by mail by calling 857-368-8000.

Plate Type: Example: PAS AN1234



ELECTRIC VEHICLE

Electric Vehicle passenger plates feature an image of a green car shown with an electric plug. The bottom of the passenger plate reads "Electric Vehicle" in blue colored text. These plates are available in all branches for vehicles that are either electric powered or are hybrids.

Eligibility: Anyone with an electric or hybrid passenger vehicle is eligible for Electric Vehicle plates.

Note: Electric Vehicle plates are optional for these vehicles; customers can choose to have either Electric Vehicle plates or other passenger plates.

Fees: <https://www.mass.gov/doc/rmv-schedule-of-fees/download>

Renewal: Passenger Electric Vehicle plates need to be renewed every two years.

Available At: Electric Vehicle plates can be ordered through the Special Plates Department, at any RMV Service Center, or at any Dealership that is part of the Electronic Vehicle Registration program.

Plate Type: Example: PAS EV1234



FOREIGN ORGANIZATION

Eligibility: Foreign Organization plates are issued to certain foreign organizations.

The following documents are required in order to obtain Foreign Organization Plates:

- TECRO Personal Tax Exemption Card
- TECRO Identification Card

These cards are Issued to the customer from the Taipei Economic and Cultural Representative Office.

Fees: There is no fee.

Renewal: The plates need to be renewed every year.

Available At: Foreign Organization plates are only available through the Special Plates Department. For more information on Foreign Organization plates, the customer can call the Special Plates Department at 857-368-8031.

Plate Type: Example: PAS CONS 500



HAM OPERATOR

The Ham Operator plates feature a "lightning bolt" in the middle of the plate.

Eligibility:

The Federal Communications Commission (FCC) describes amateur radio operators as people who “are qualified persons of any age who are interested in radio technique solely with a personal aim and without pecuniary interest.” Ham operators maintain and operate radio communications for the purpose of self-training, intercommunication, and technical investigations carried out by amateurs. “Ham Operator” registration plates are only issued to people with an active FCC license. Their plate number is their call number. To apply for Ham Operator plates, the customer must:

- Fill out the [Application for Ham Operator Plates](#)
- Submit the application with a copy of his/her current Federal Communications Commission (FCC) license and a check for \$20 payable to MassDOT...

Registry of Motor Vehicles
PO Box 55895
Boston, Ma 02205
Attn: Special Plates

The Special Plates Department will notify the customer by mail when the plates are ready.

Fees:

<https://www.mass.gov/doc/rmv-schedule-of-fees/download>

Renewal:

The plates need to be renewed every year.

Available At:

Ham Operator plates are only available through the Special Plates Department. For more information on Ham Operator plates, the customer can call the Special Plates Department at 857-368-8031.

Plate Type:

Example: PAS 12/34



LIMITED USE VEHICLE (LUV)

Limited Use Passenger

A “limited use vehicle” is any motor vehicle that . . .

- has 2 or more wheels
- has a certificate of origin
- has a 17 character VIN
- has been certified by the manufacturer to meet Federal Motor Vehicle Safety Standards (FMVSS) for that particular class of vehicle (e.g. passenger) **and**
- whose speed on a paved level surface can exceed 30 miles per hour but is not capable of exceeding 40 miles per hour.

Note: In most instances, the maximum speed of the vehicle will **not** be on the Certificate of Origin. It will be up to the dealer, insurance agent, and the customer to ensure the vehicle is properly registered.

Eligibility: If qualified, anyone can obtain a Limited Use plate.

Fees: <https://www.mass.gov/doc/rmv-schedule-of-fees/download>

Renewal: The plates need to be renewed every two years.

Available At: Limited Use plates can be ordered through the Special Plates Department or at any RMV Service Center. They can also be ordered at any Dealership that is part of the Electronic Vehicle Registration program.

Other available Limited Use plates include:

- Commercial (CON)
- Livery (LVN)
- Motorcycle (MCS)
- Taxi (TXN)

Plate Type: Example: PAS LU1234, CON LU1234, LVN LU 1234, MCS LU 1234, TXN LU 1234



LOW SPEED

A low speed vehicle is any 4-wheeled motor vehicle that:

- has a 17-digit VIN
- has been issued a Certificate of Origin
- has a gross vehicle weight rating (GVWR) of less than 3,000 pounds
- has a top speed greater than 20 mph but not greater than 25 mph, and
- is National Highway Traffic Safety Administration (NHTSA)-certified as a “Low Speed Vehicle,” demonstrated by:
 - The Certificate of Origin, title, or out-of-state registration listing the body style or body type as “LSV” or “Low Speed Vehicle”
 - The Manufacturer’s Certification Label posted on the vehicle containing the VIN and indicating the TYPE of vehicle as a “Low Speed Vehicle.”

Eligibility: If qualified, anyone can obtain Massachusetts Low Speed plates.

Fees: <https://www.mass.gov/doc/rmv-schedule-of-fees/download>

Renewal: The plates need to be renewed every two years.

Available At: Low Speed plates can be ordered through the Special Plates Department or at any RMV Service Center. They can also be ordered at any Dealership that is part of the Electronic Vehicle Registration program.

Plate Type: Example: PAS LS1234, LS12AB



NEWS PHOTOGRAPHER PLATES

Eligibility: News Photographer plates are issued to members of the Boston Press Photographer's Association.

An [Application for News Photographer Plates](#) must be completed, approved, and certified by an officer of the Boston Press Photographers' Association.

Fees: <https://www.mass.gov/doc/rmv-schedule-of-fees/download>

Renewal: The plates need to be renewed every year.

Available At: News Photographer plates are only available through the Special Plates Department at 857-368-8031. Customers must mail the completed *Application for News Photographer Plates* to...

RMV
PO Box 55895
Boston, MA 02205
Att'n Special Plates

Plate Type: Example: PAS NP1234

LOTTERY PLATES

Lottery Plates are "low number" plates. If a plate matches any of the combinations listed below, it is a Lottery plate...

1	One number (1 - 9)
12	Two Numbers (10 - 99)
123	Three Numbers (100 - 999)
1234	Four Numbers (1000 - 9999)
A1, O1	One Letter and One Number
1A	One Number and One Letter (excluding the letter "O")
12A	Two Numbers and One Letter (excluding the letter "O")
A12, O12	One Letter and Two Numbers
A	One Letter (A - Z)

There are no Lottery plates that begin with Zero

Fees: <https://www.mass.gov/doc/rmv-schedule-of-fees/download>

Renewal: The plates need to be renewed every two years.

Availability: Lottery Plate re-assignments can be processed at any RMV Service Center (an appointment is required and can be scheduled at: [atlas-myrmv.massdot.state.ma.us/myrmv/ #1](https://atlas-myrmv.massdot.state.ma.us/myrmv/#1)).

1. The customer must complete the following sections of the *Application for Lottery Plate Re-Assignment...*
 - Relationship to Current Owner
 - Current Owner Information (transferor)
 - New Owner Information (transferee)
2. The application must be notarized. Photocopies are not acceptable.
3. Authorized personnel will process the re-assignment following existing procedures and forward all completed, notarized applications to the Special Plates Department.

Plate Type: PAR (See Sample Lottery Plates on next page)

SAMPLE Lottery Plates



One Number



Two Numbers



Three Numbers



Four Numbers



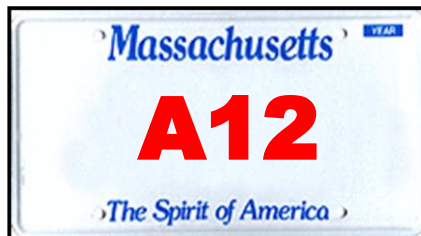
One Letter, One Number



One Number, One Letter



**The Letter "O", One Number
No Longer Issued**



One Letter, Two Numbers



Two Numbers, One Letter



**The Letter "O", Two Numbers
No Longer Issued**



One Letter

