

# Paul Revere Park Playground Project



**DCR Public Meeting with  
New Charles River Basin Citizens Advisory Committee  
Tuesday, February 19, 2019 - 4:00 p.m. – 6:00 p.m.  
EF Education First, Two Education Circle, Cambridge, MA**



# Commonwealth of Massachusetts

Governor

**Charles D. Baker**

Lieutenant Governor

**Karyn E. Polito**

Energy and Environmental Secretary

**Matthew A. Beaton**

Department of Conservation and Recreation Commissioner

**Leo P. Roy**



## **DCR Mission Statement**

*To protect, promote and enhance our  
common wealth of natural, cultural  
and recreational resources  
for the well-being of all.*

## **Purpose of Meeting**

At this meeting, to which the public is invited, DCR will present design plans for the Paul Revere Park Playground Project.

# Project Consultant



- 35 years experience designing public landscapes
- Designed numerous parks and playgrounds



## Project Context

- This project is part of the MassDOT North Washington Bridge Project.
- General Contractor is JF White.
- Existing playground will have a temporary bridge over it.
- Building a new playground identified as a need.
- Proposed new area better suited for a playground (away from salt runoff from bridge and quieter).
- Playground equipment and surfacing will be updated.



# Project Context



Existing  
Playground

Temporary  
Bridge

New  
Playground  
Location

## Current Playground



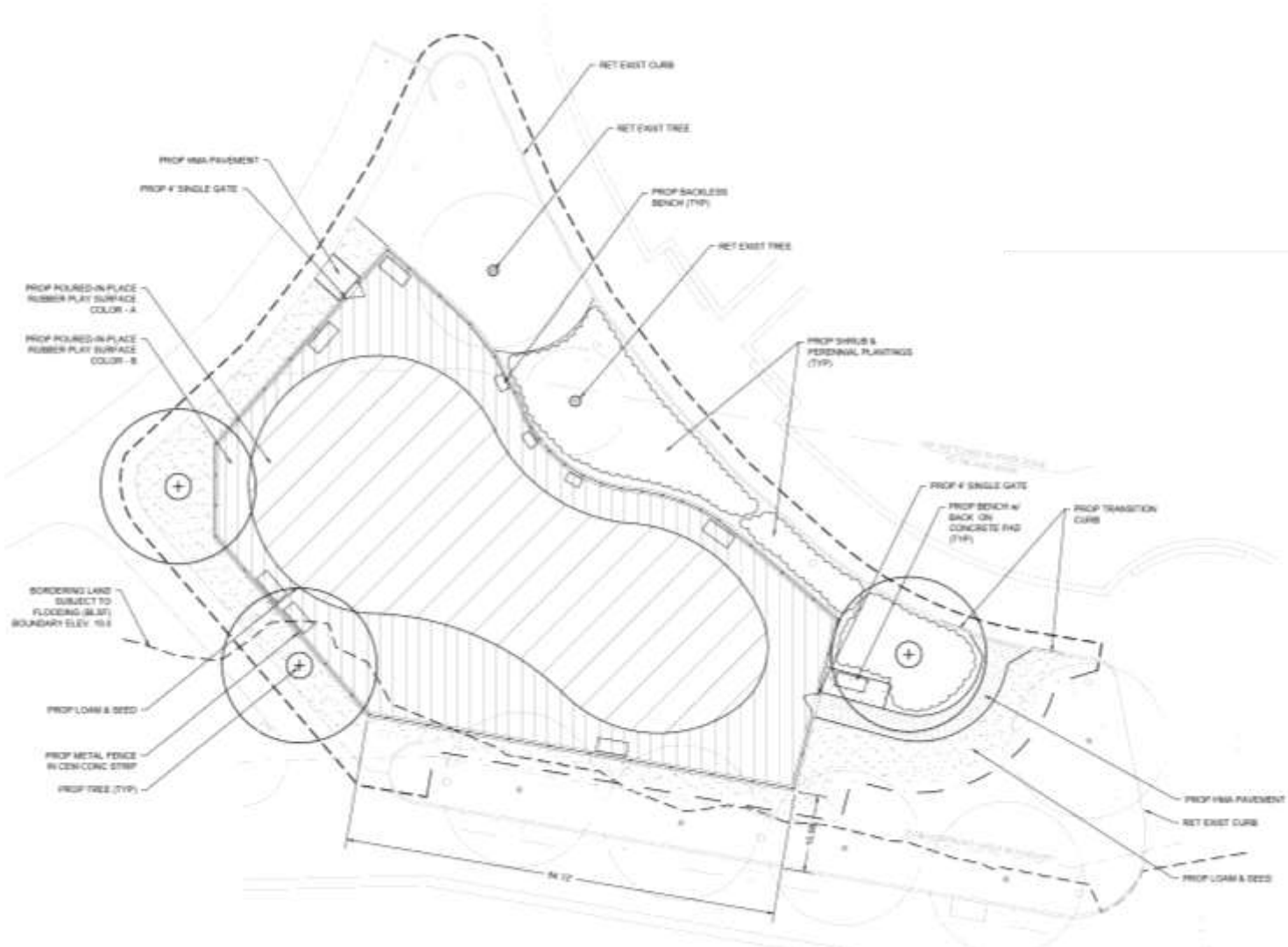
- Installation 2000



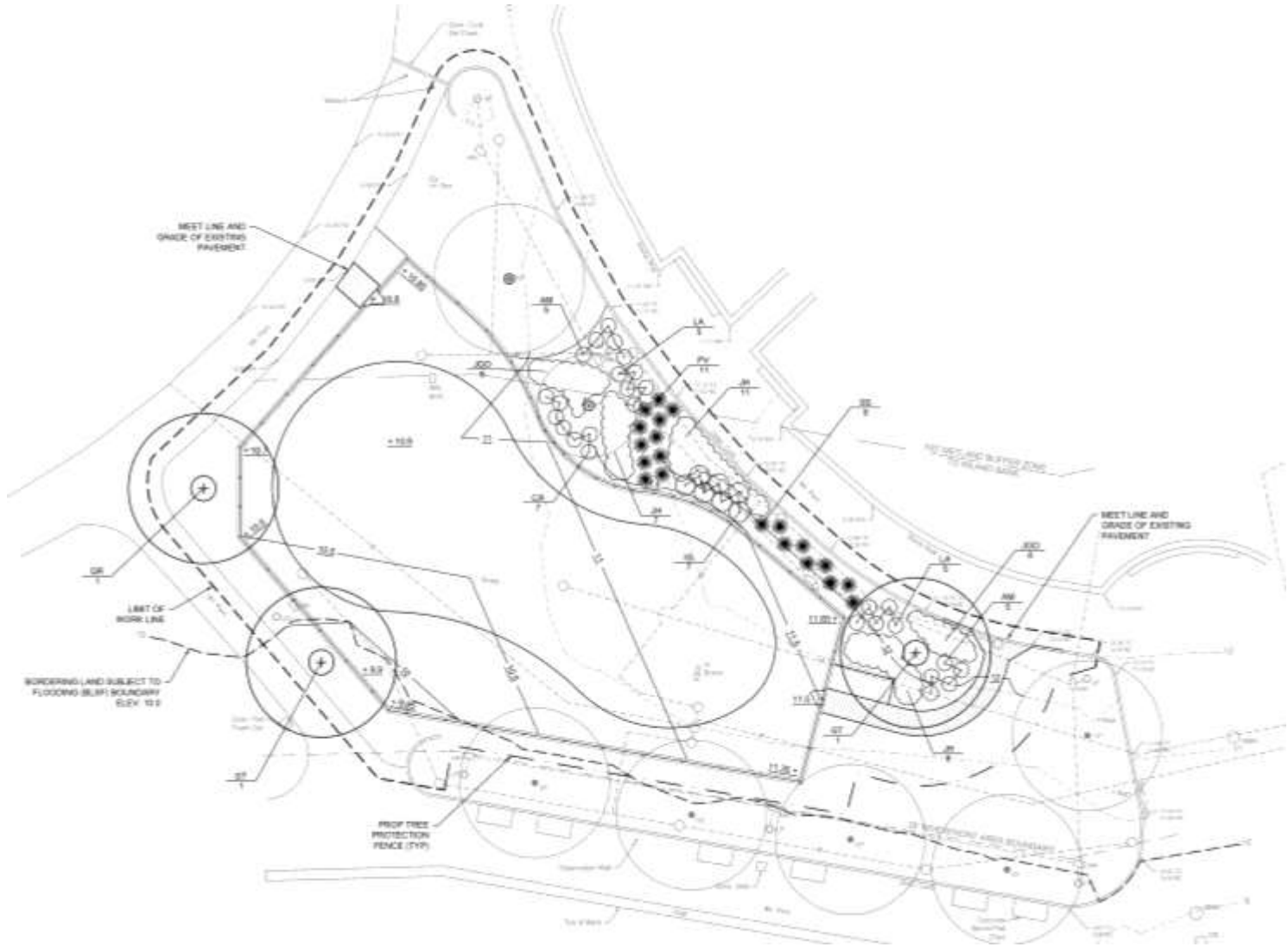
## Design - Project Scope

- Install new play equipment and play surfacing for 2-5 and 5-12 year olds
- Install new fencing
- Add 2 secure entrances (latch-able gate) to play area
- Incorporate existing benches
- Restore landscape
- Incorporate as many types of play as possible with a general theme

# Proposed Plan: Layout & Materials



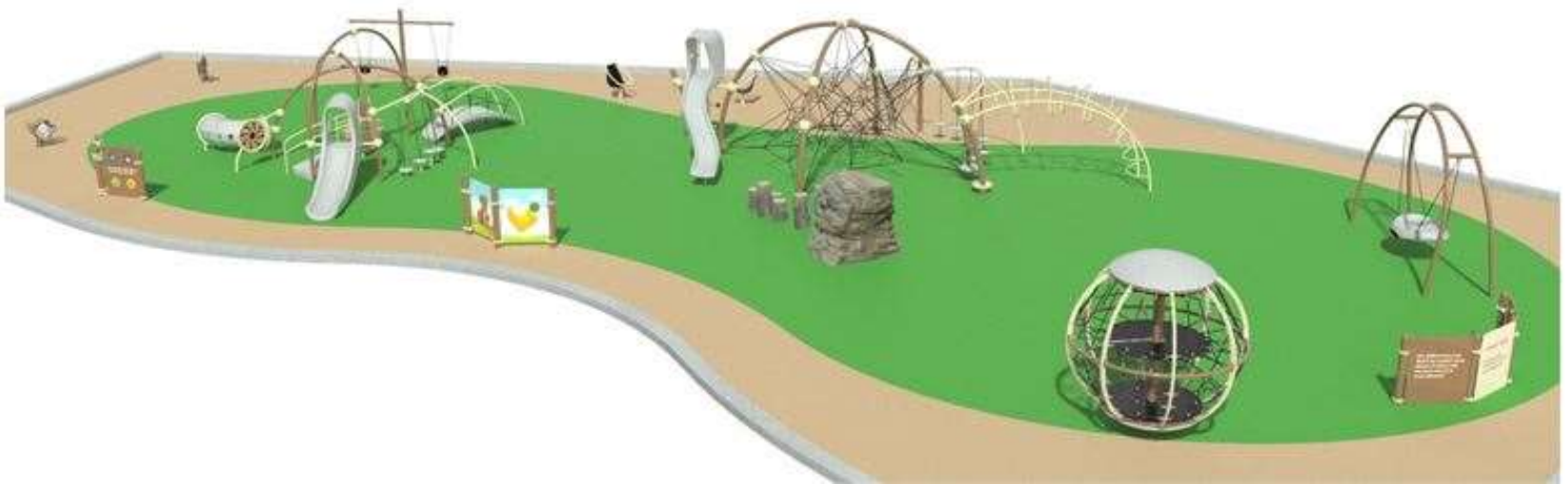
# Proposed Plan: Grading & Planting



# Proposed Plan: Equipment



# New Play Equipment



- Ages 2-5 structure
- Musical elements
- Tot swings
- Custom spring riders
- Custom activity panels

- Ages 5-12 structure
- 2 Spinner seats
- Global motion
- Oodle swing



# Play Surfacing



- Poured-in-place rubber examples

# Proposed Fencing



## **Project – Next Steps/Timetable**

- Completion of design details
- Permitting in March 2019
- Complete design to JF White end of March
- Pre-construction public meeting end of March
- Construction to begin in April 2019
- Playground re-opening anticipated June 2019

## Project Benefits

- Enhanced play value
- Safety updates
- Accessibility updates
- Improvements to site materials/furnishings
- Increased recreational benefits
- Value of playground area improvements to commonwealth \$550,000
- After bridge construction, the restoration of existing playground area

# Q&A with Additional Information

**For more information:**

<https://www.mass.gov/dcr-public-meetings-information/events/past>

**If you have questions or concerns or wish to subscribe to a DCR general information or project-related listserv:** contact DCR's Office of Community Relations at 617-626-4973 or [Mass.Parks@state.ma.us](mailto:Mass.Parks@state.ma.us).