

Paul Revere Park Playground Project



**DCR Public Meeting with
New Charles River Basin Citizens Advisory Committee
Thursday, May 16, 2019 - 6:00 p.m. – 8:00 p.m.
Boston Police Department - District 15 Station
Judy Evers Community Room, 2nd Floor
20 Vine Street, Charlestown, MA 02129**



Commonwealth of Massachusetts

Governor

Charles D. Baker

Lieutenant Governor

Karyn E. Polito

Energy and Environmental Secretary

Kathleen A. Theoharides

Department of Conservation and Recreation Commissioner

Leo P. Roy



DCR Mission Statement

*To protect, promote and enhance our
common wealth of natural, cultural
and recreational resources
for the well-being of all.*

Purpose of Meeting

At this meeting, to which the public is invited, DCR will present the final design plans and review the construction schedule for the Paul Revere Park Playground Project.



Project Consultant



- 35 years experience designing public landscapes
- Designed numerous parks and playgrounds



Project Context



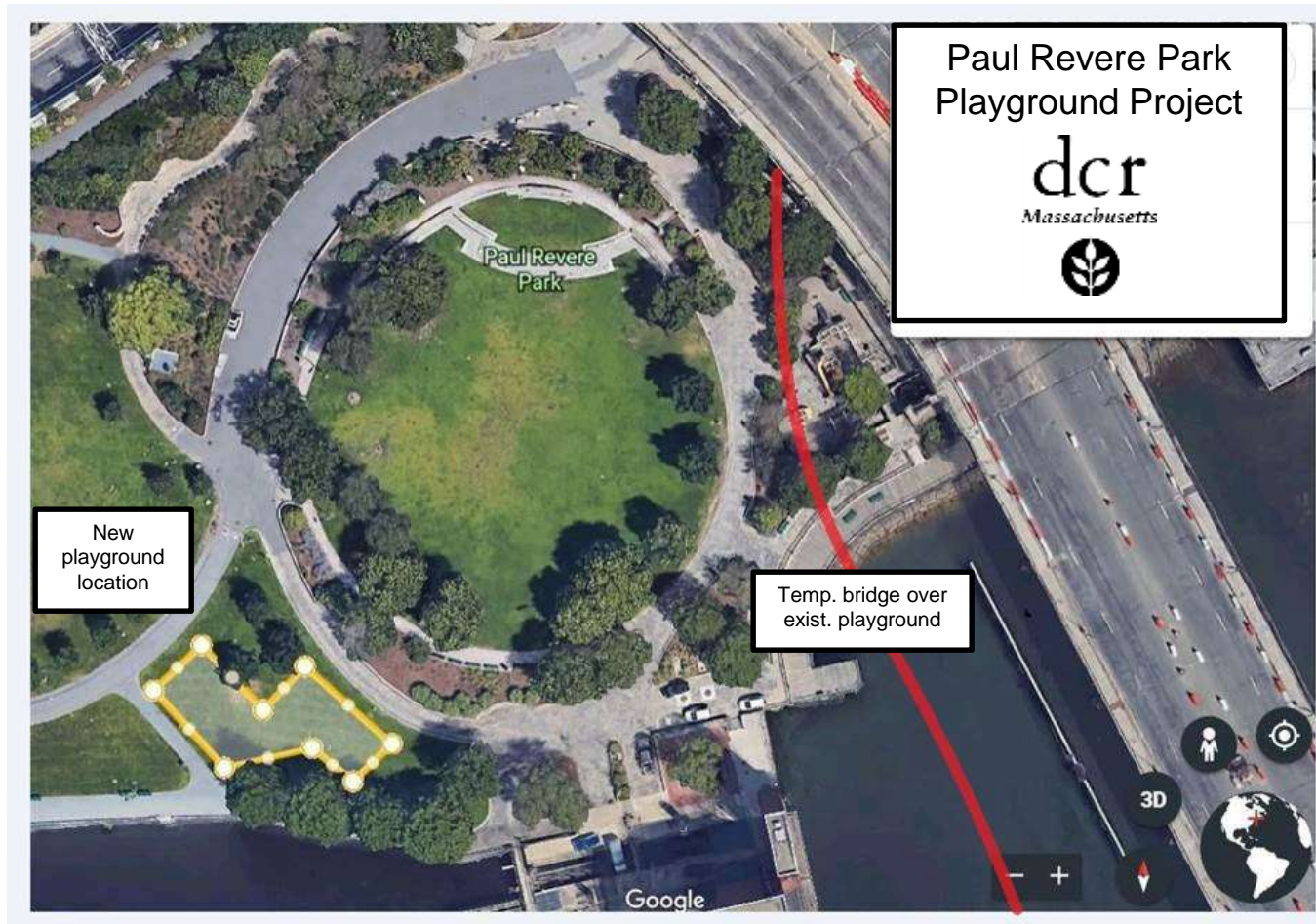
- This project is part of the MassDOT North Washington Bridge Project.
- General Contractor is **JF White**.
- Existing playground has been removed and a temporary bridge is being built over the area.
- JF White is building a new playground in the adjacent area.
- The new playground will permanently be in this area.
- When the bridge is completed (in four-plus years), JF White will install an enclosed dog park in the former playground location.

Project Context





Project Context



Current Playground



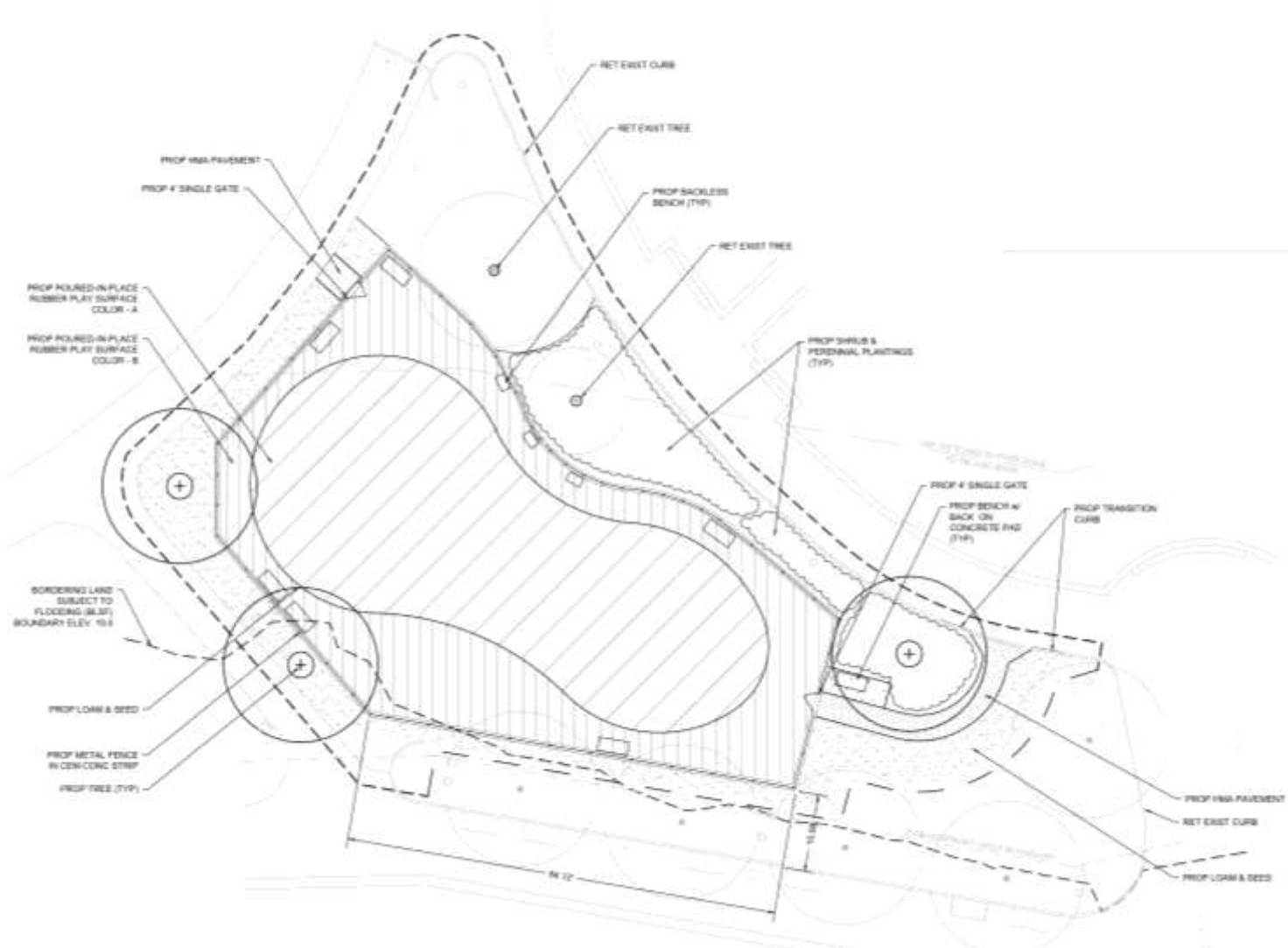
Demolition
Complete

Design - Project Scope

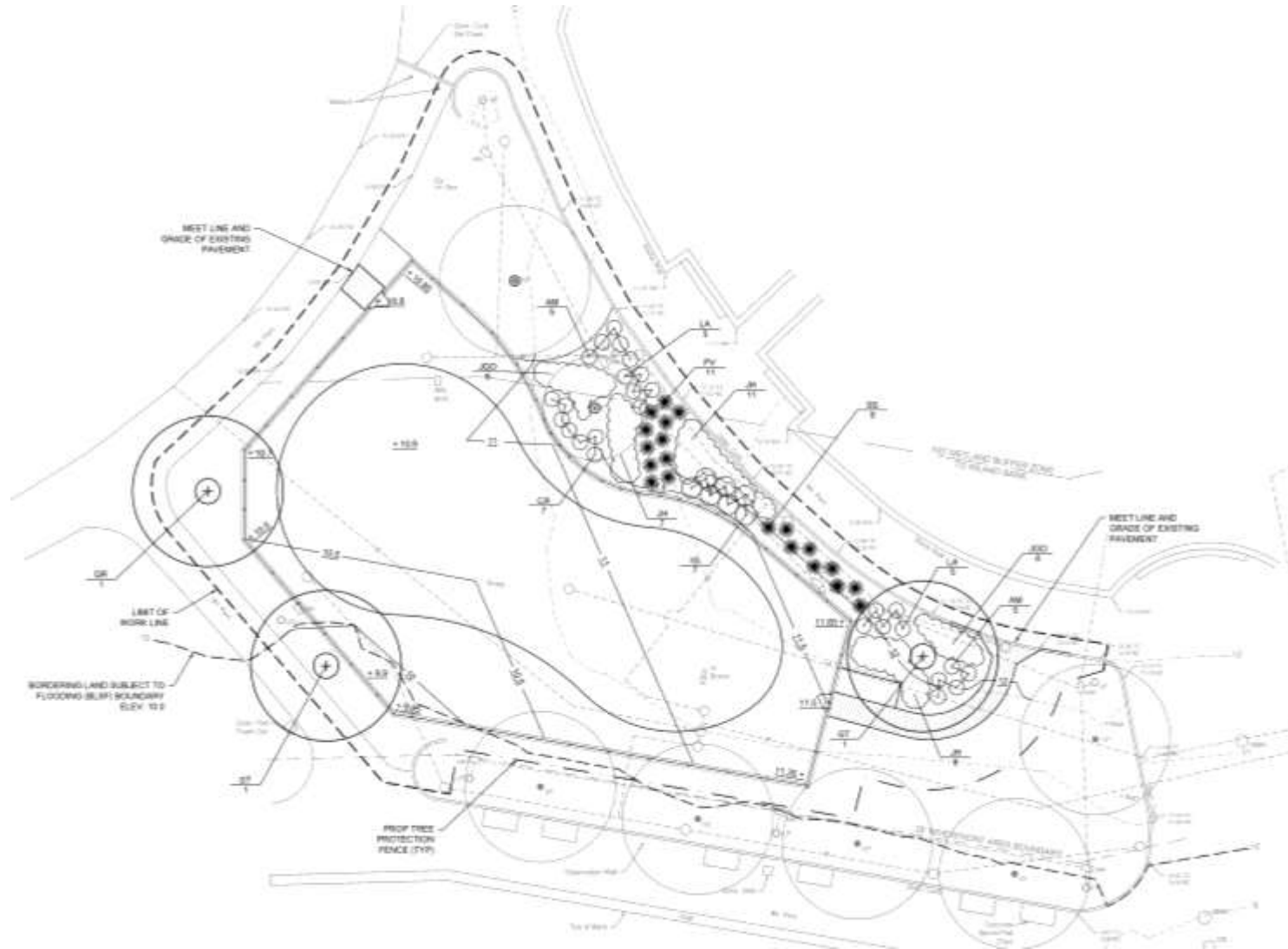


- Install new play equipment and play surfacing for 2-5 and 5-12 year olds
- Install new 42-inch fencing
- Add 2 secure entrances (latchable gate) to play area
- Incorporate 4 Shurcliff benches from former playground area.
- Restore landscape

Proposed Plan: Layout & Materials



Proposed Plan: Grading & Planting



Proposed Plan: Equipment



New Play Equipment



- Ages 2-5 structure
- Musical elements
- Tot swings
- Custom spring riders
- Custom activity panels

- Ages 5-12 structure
- 2 Spinner seats
- Global motion
- Oodle swing
- Colors are as shown: acorn, tan, leaf, limon

Play Surfacing

- Poured-in-place rubber examples



Proposed Fencing



Project – Update and Next Steps



- Permitting is complete.
- JF White has all construction documents.
- Playground equipment has been ordered.
- Temporary fence and project sign has been erected.
- Construction will begin this month.
- Anticipate playground opening in September 2019.
- Surrounding plant materials installed in fall 2019.



Please be safe during construction

- Hours of construction are mainly 7am to 3pm.
- Only authorized vehicles are allowed in the park.
- Large construction vehicles will be in and out.
- There may be minor detours necessary for safety.
- Access to the site will be kept open.
- Alternative playground options:
 1. Mayor Thomas M. Menino Playground is open
 2. North Point Playground resurfacing is underway and will be completed in June. Playground will be reopened at that time.



Nearby Playgrounds



Project Benefits

- Enhanced play value
- Safety updates
- Accessibility updates
- Improvements to site materials/furnishings
- Increased recreational benefits
- Value of playground area improvements to Commonwealth \$550,000
- After bridge construction, the former playground area will be converted into a new enclosed dog park.





Questions and Discussion



2-5 area



5-12 area





Additional Information

For more information:

<https://www.mass.gov/dcr-public-meetings-information/events/past>

For questions regarding the North Washington Street Bridge Project: NorthWashingtonStreet@dot.state.ma.us.

If you have questions or concerns or wish to subscribe to a DCR general information or project-related listserv: contact DCR's Office of Community Relations at 617-626-4973 or Mass.Parks@state.ma.us.