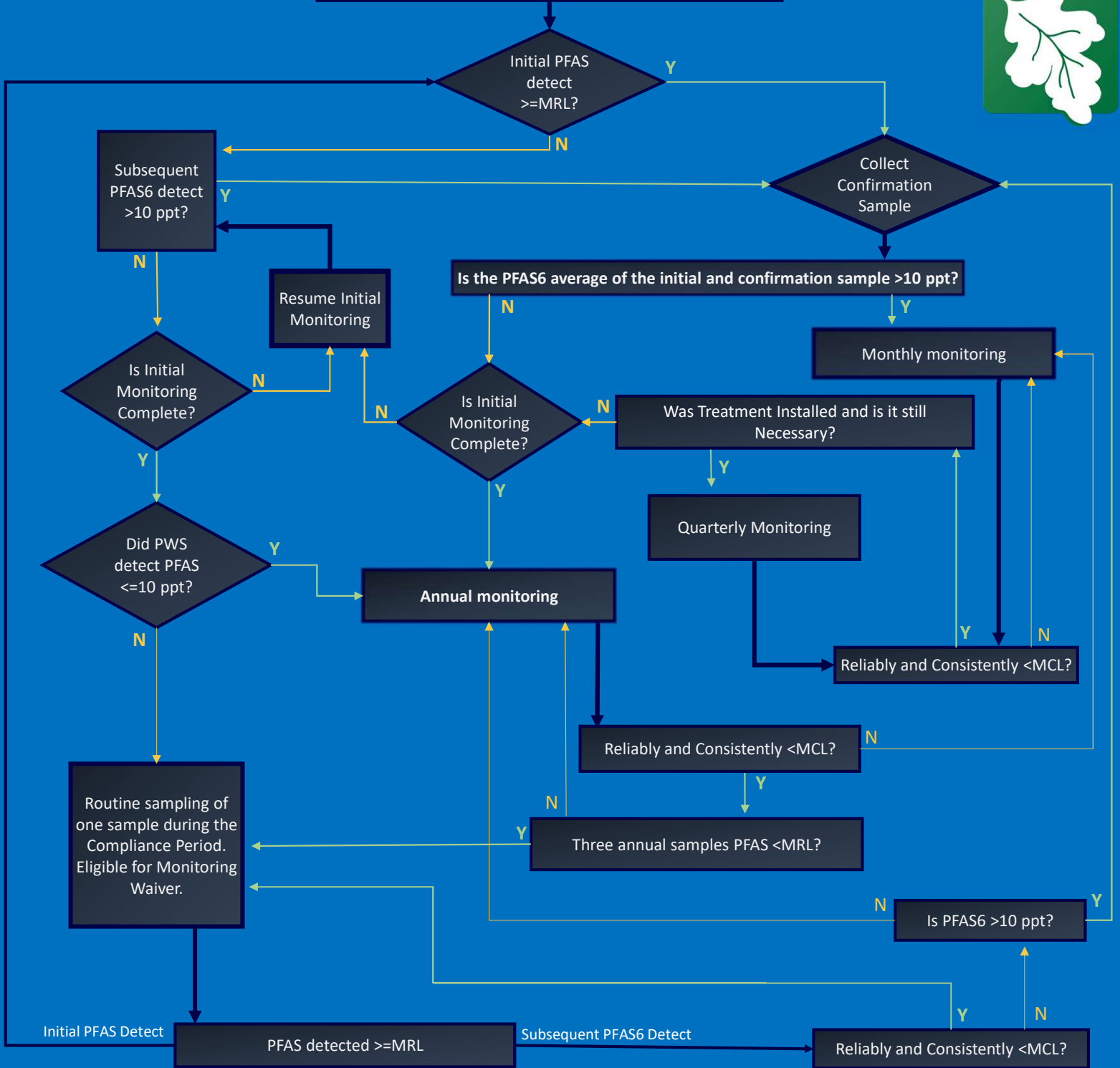


MassDEP COM and NTNC PFAS Monitoring Flowchart for PWS serving < 3300



Initial Monitoring

- Existing PFAS data can reduce or eliminate this requirement.
- Two quarters <MRL can waive third and fourth quarters.



MassDEP COM and NTNC PFAS Monitoring Flowchart for PWS serving < 3300

Check at each stage for the need for PE or PN. If the average is >20 ug/L (ppt) and it is not a quarterly compliance period violation, issue PE. If it is a quarterly compliance period violation, issue PN. Any Supplier of Water subject to 310 CMR 22.07G(7), where there has been a PFAS Detection and the average of such detection and an associated Confirmatory Sample exceeds the PFAS6 MCL, shall provide public education (PE) materials unless the result is the quarterly average, or the result would cause the quarterly average to exceed the PFAS6 MCL at any sampling point or alternate sampling location then the PWS is in violation and public notice (PN) is required. **PN requirements are at 310 CMR G(10) (c) and (d) and 310 CMR G(11).** "This flowchart summarizes MassDEP drinking water monitoring requirements; to ensure full compliance, please consult the regulations at 310 CMR 22.07G." If you need this document translated, please contact MassDEP's Diversity Director, Michelle Waters-Ekanem, Diversity Director/Civil Rights: 617-292-5751 TTY# MassRelay Service 1-800-439-2370. You may also contact the Drinking Water Program at program.director-dwp@mass.gov.