

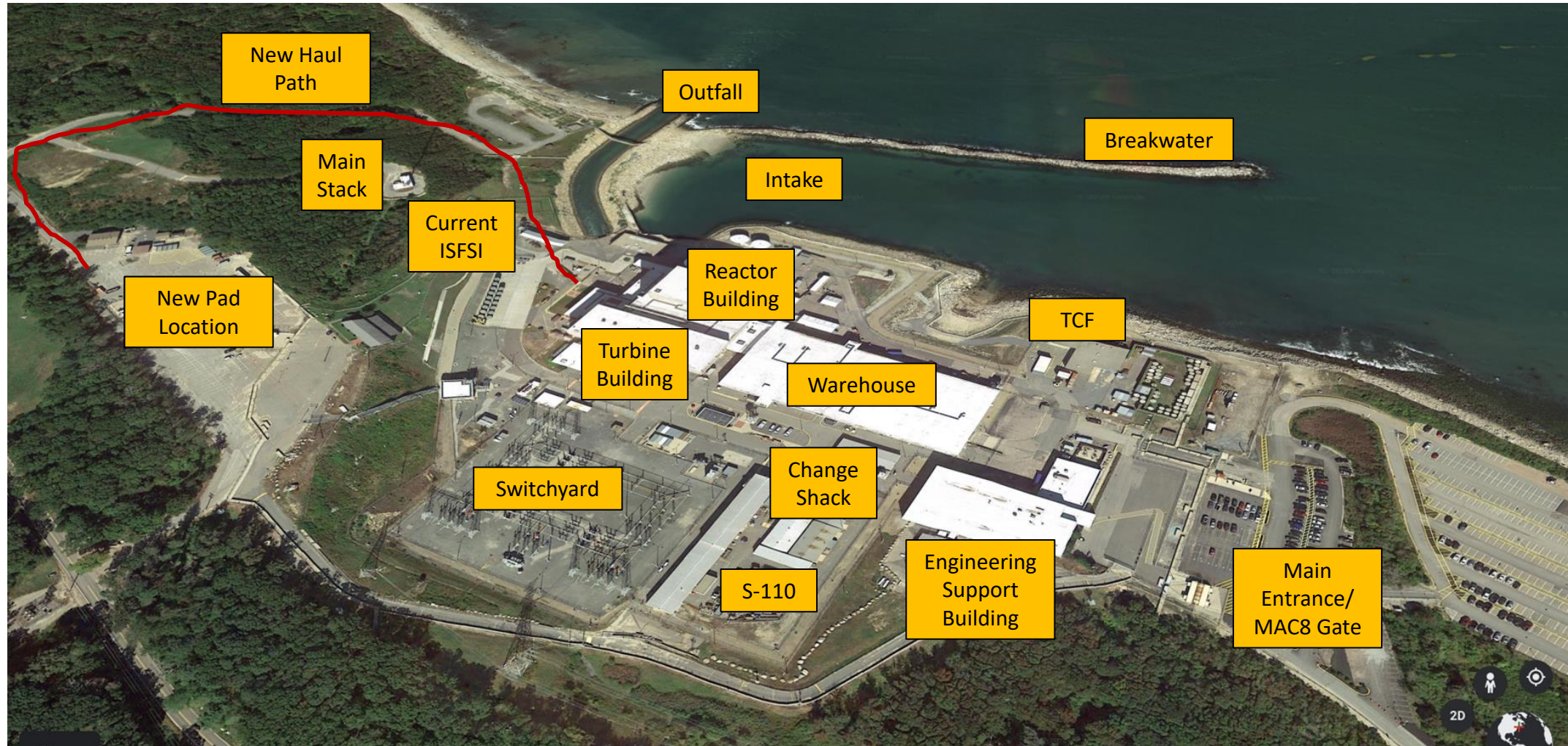


MA NDCAP Monthly Meeting Update

September 21, 2020

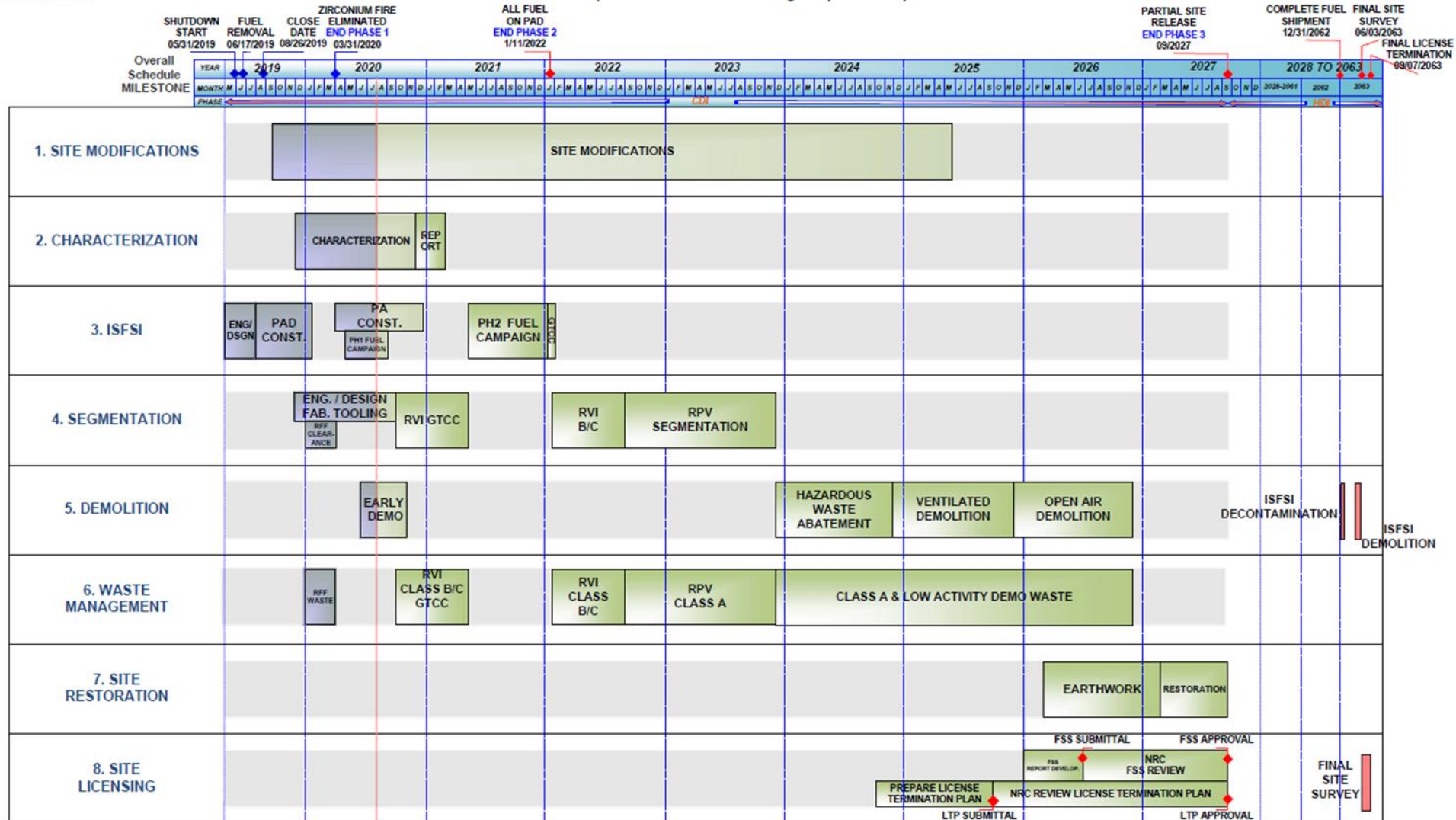


Site Overview



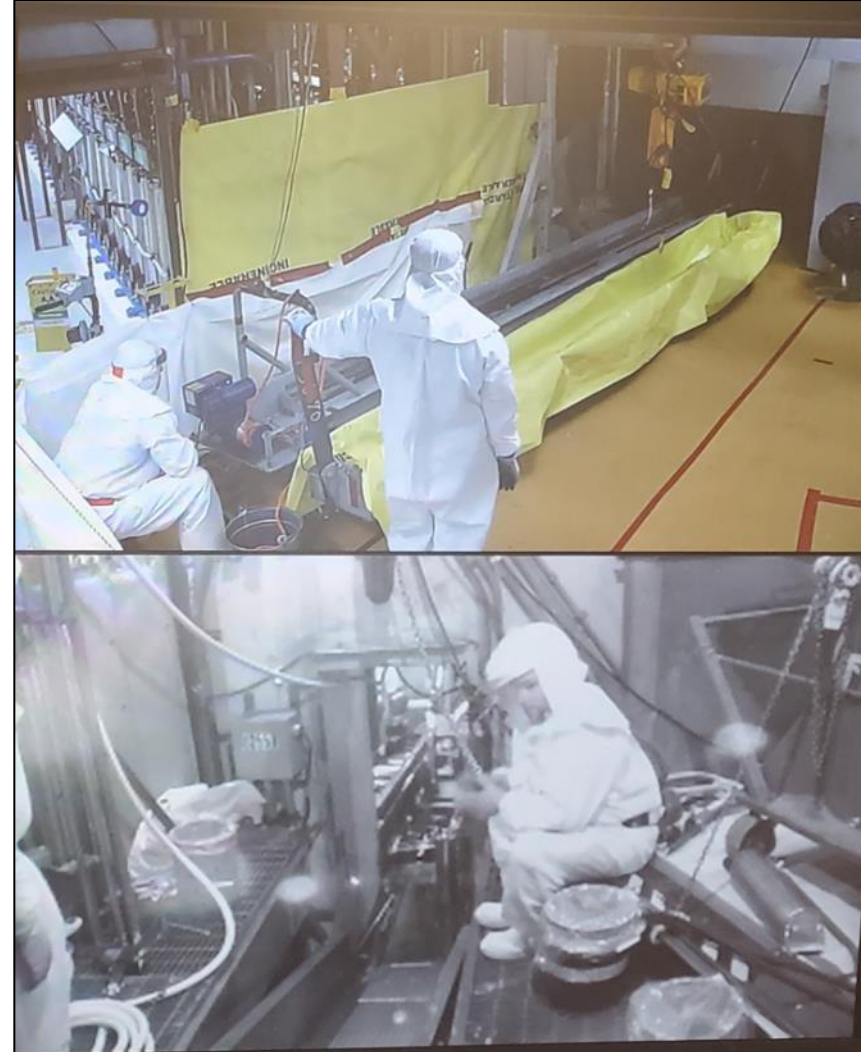
CONFIDENTIAL / SENSITIVE

DRAFT PILGRIM WATERFALL SCHEDULE FOR PLANNING PURPOSES



Fuel Campaign

- 11 Casks loaded onto the pad (28 total on pad) – Completed August 3
- Next Fuel campaign will be in Spring of 2021
- New Protected Area and Haul Path for Upper ISFSI Under Construction
- Removal of Control Rod Drive Mechanisms (CRDMs) completed in August 2020
- Reactor vessel internals segmentation and removal of Greater than Class C Waste to begin in Fall 2020



Early Building Demolition – K-1 Building



Early Building Demolition – S-110 Buildings



Early Building Demolition – Main Stack, Met Tower, Change Shack, & Gas Bottle Storage Area



Community Support – Plymouth Area Chamber

