

Plymouth

CONTACT INFORMATION

212 South Meadow Road
Unit #3
Plymouth, MA 02360
Phone 508-830-4170
Fax 508-830-4019

BOARD MEMBERS

Lynne Barrett
Gerald Coughlin
Thomas Kelley*
Dale Webber
Robert Ness

*indicates Chairperson

BOARD ADMINISTRATOR

Wendy Cherry

SYSTEM MEMBERS

Active Members914
Total Payroll\$51.2 M
Average Salary\$56,000
Average Age48
Average Service11.8

Retired Members763
Benefits Paid\$19.8 M
Average Benefit\$26,000
Average Age71

2020 EARNED INCOME OF DISABILITY RETIREES:

Disability Retirees78
Reported Earnings28
Excess Earners1
Refund Due\$42,882

Last Valuation: 1/1/20
Actuary: KMS



Click/Scan for Website

\$257.6 M
Market Value

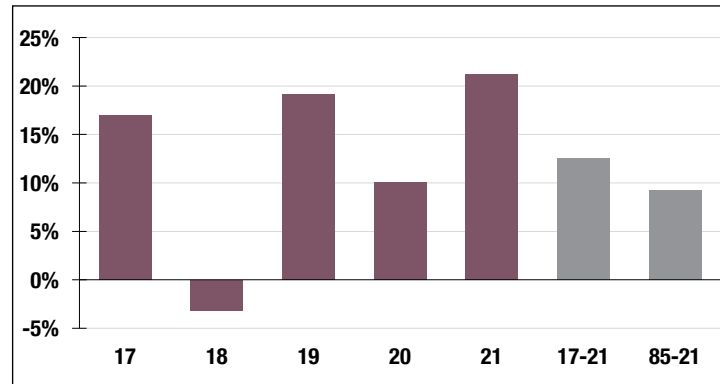
21.19%
2021 Returns

11.36%
2012-2021
(Annualized)

9.25%
1985-2021
(Annualized)

Investment Returns

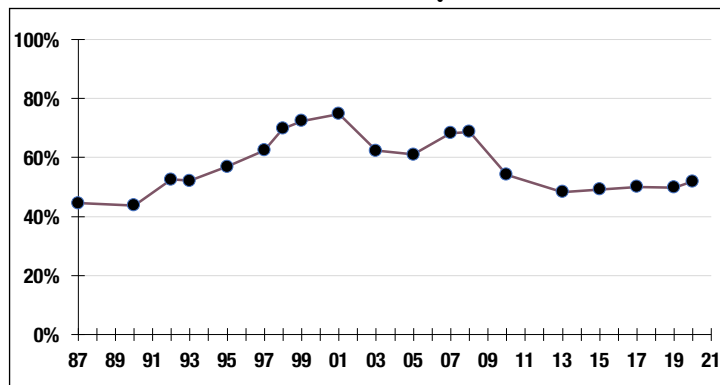
(2017-2021, 5-Year & 37-Year Averages, as of 12/31/21)



7.00%

Assumed Rate
of Return

Funded Ratio History (1987-2021)



51.9%

Funded Ratio

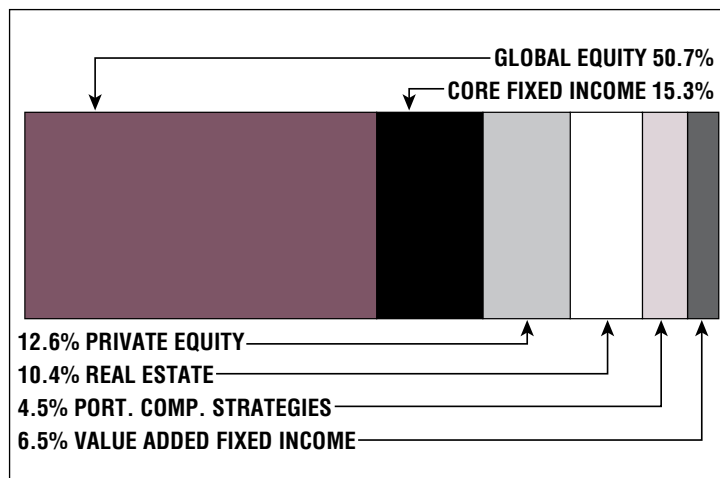
2035

Fully Funded

**Varies Total
Increasing**

Funding Schedule

Asset Allocation (12/31/21)



\$176.0 M

Unfunded Liability

\$16.6 M
(FY2022)

Total Pension
Appropriation