

MASSACHUSETTS COMMERCIAL FISHING PORT PROFILES

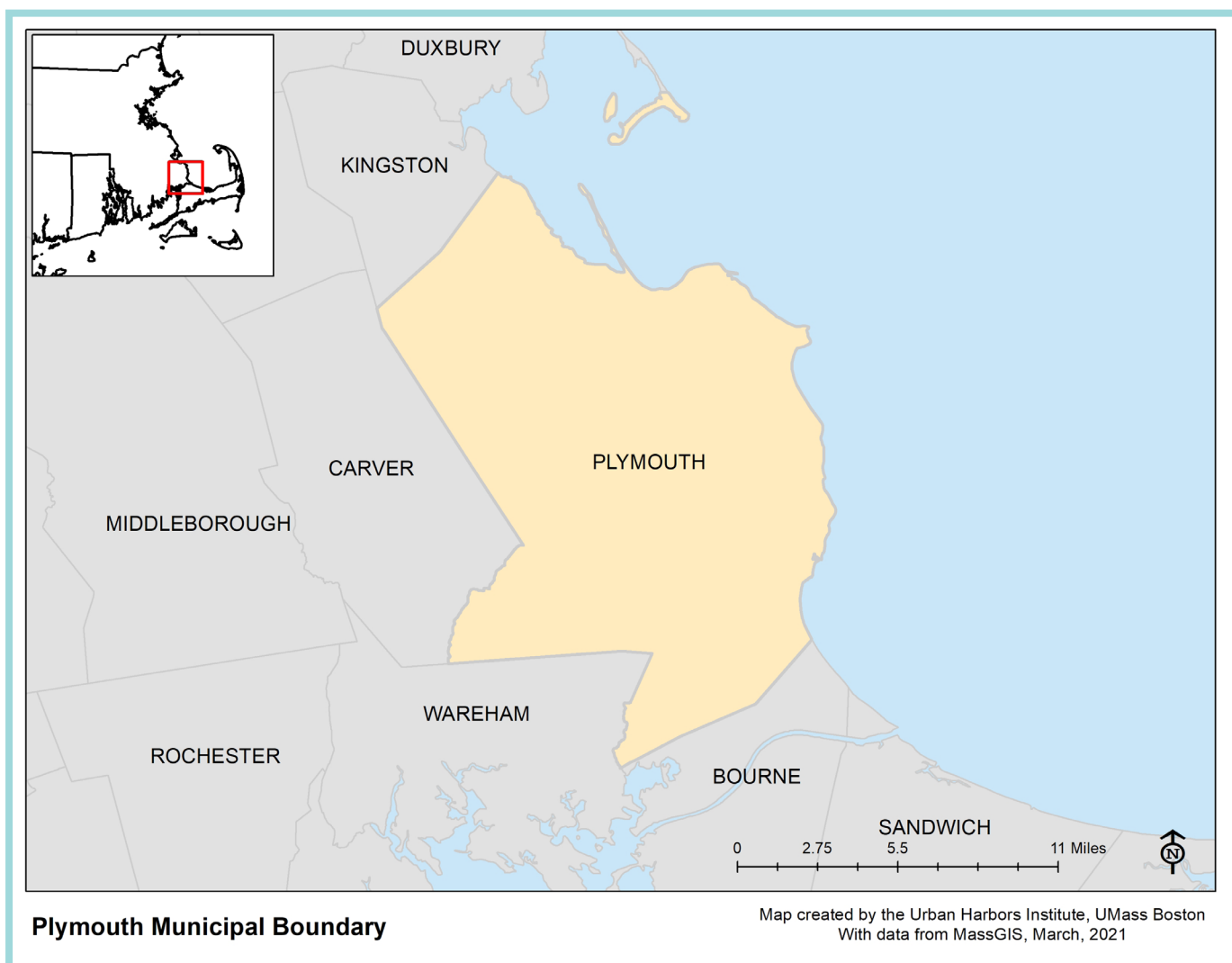
The **Massachusetts Commercial Fishing Port Profiles** were developed through a collaboration between the Massachusetts Division of Marine Fisheries, the University of Massachusetts Boston's Urban Harbors Institute, and the Cape Cod Commercial Fishermen's Alliance. Using data from commercial regional permits, the Atlantic Coastal Cooperative Statistics Program's (ACCSP) Standard Atlantic Fisheries Information System (SAFIS) Dealer Database, and harbormaster and fishermen surveys, these profiles provide an overview of the commercial fishing activity and infrastructure within each municipality. The Port Profiles are part of a larger report which describes the status of the Commonwealth's commercial fishing and port infrastructure, as well as how profile data can inform policy, programming, funding, infrastructure improvements, and other important industry-related decisions.

For the full report, visit the Massachusetts Division of Marine Fisheries website.



URBAN HARBORS INSTITUTE
UNIVERSITY OF MASSACHUSETTS BOSTON





Key Terms:

Permitted Harvesters: Commercially permitted harvesters residing in the municipality

Vessels: Commercially permitted vessels with the municipality listed as the homeport

Trips: Discrete commercial trips unloading fish or shellfish in this municipality

Active Permitted Harvesters: Commercially permitted harvesters with at least one reported transaction in a given year

Active Dealers: Permitted dealers with at least one reported purchase from a harvester in a given year

Ex-Vessel Value: Total amount (\$) paid directly to permitted harvesters by dealers at the first point of sale

PLYMOUTH

Located on the South Shore, Plymouth has one main harbor named Plymouth Harbor.

Permitted commercial fisheries, which may or may not be active during the survey period, include:

- Lobster Pot
- Dragger
- Scallop Dredge
- Rod & Reel
- Aquaculture
- For Hire/ Charter



2018 Overview

Source: DMF Permitting and Statistics Data; ACCSP Data Warehouse



Plymouth's commercial fishery had:

- 266** permitted harvesters with a Plymouth address
- 205** vessels with a Plymouth homeport
- 4,033** trips landing in Plymouth
- 205** active permitted harvesters landing in Plymouth
- 30** active dealers purchasing in Plymouth



Commercial harvesters landed the following in Plymouth in 2018:

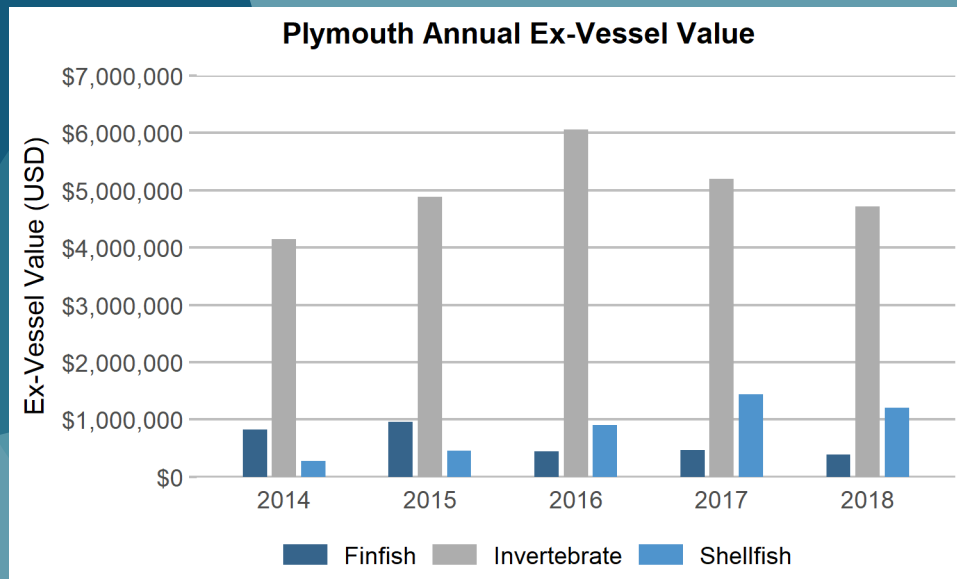
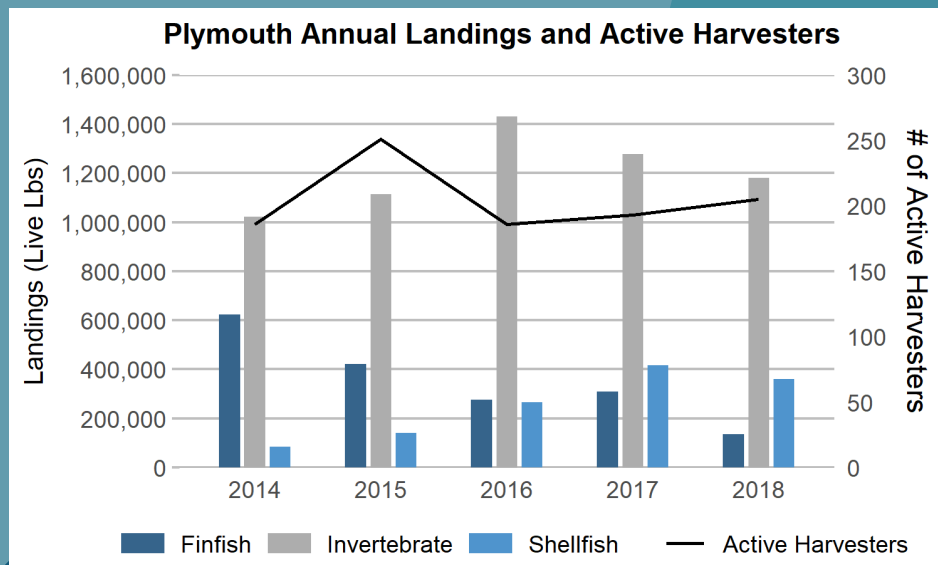
1,675,898 pounds of catch with an ex-vessel value of **\$6,319,145**

The top-ranked species, by dollar value, landed between 2014-2018 included:

- American Lobster
- Eastern Oyster
- Bluefin Tuna

5 Year Trends in Commercial Landings and Value

Source: DMF Permitting and Statistics Data; ACCSP Data Warehouse



Status of the Commercial Fishing Industry

Source: 2019 Harbormaster and Harvester Survey Data

In the last 10 years, Plymouth Harbor has experienced an increase in the aquaculture industry. Plymouth's commercial fishing fleet has mostly non-trailered vessels, with some trailered vessels. The number of non-trailered commercial fishing vessels has decreased mostly due to regulations and the age of operators within the profession. On the other hand, the number of trailered vessels has increased due to a growing interest in the sportfish charter industry.



Commercial Fishing Infrastructure



Infrastructure upgrades in last ten years:

- New wharf and launching ramp
- Dredging



Current infrastructure

Challenges

- Limited parking
- Conflicts with other users
- Lack of docking space/moorings
- Shallow water/need for dredging
- Not enough boat ramps; crowding at ramps
- Lack of commercial offloading

Needs

- Parking
- Ice, bait delivery area
- Additional launch ramps
- Dredging



Infrastructure dedicated solely to commercial fishermen:

- Moorings: None
- Slips: None
- Broadside berthing: Town Wharf docks



In 2018, the municipality charged for the following services:

- Moorings: \$10/foot per year
- Broadside berthing: \$40/foot per year
- Unloading: \$100/year
- Transient dockage: \$70/night
- Launch: \$100/year; \$10/day

Type of Infrastructure	Available?
Ice	
Bait storage	
Trash disposal	
Commerical offloading	
Hoist	
Dock space	
Gear storage	
Mooring space	
Fueling stations	
Vessel repair	
Launch ramp	
Parking for fishermen	
Parking for seafood trucks	
Other	

= Available