



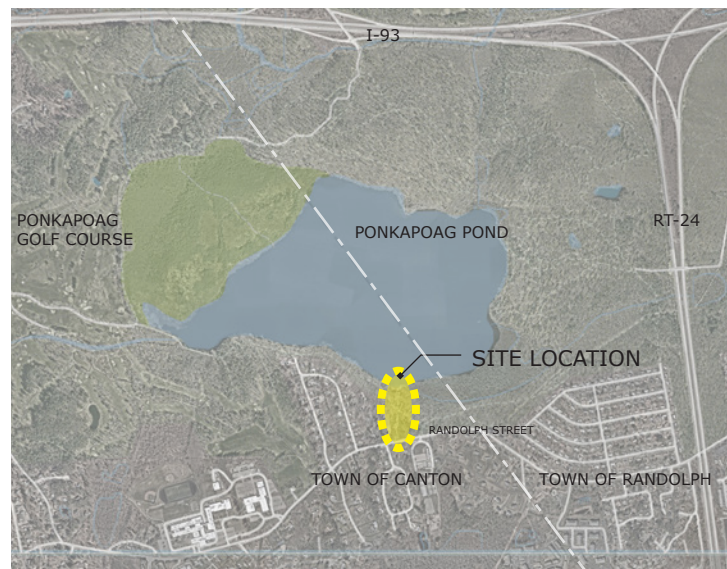
Ponkapoag Pond Fisherman's Cove Improvements and Landscape Management Plan

June 2023

The Massachusetts Department of Conservation and Recreation (MassDCR) is planning to undertake **improvements to Ponkapoag Pond Fisherman's Cove** and implement a **Landscape Management Plan** in Canton and Randolph, Massachusetts. This Fact Sheet provides a brief summary of the project for residents and interested parties.

Project Location

- Ponkapoag Pond subarea of Blue Hills Reservation in Canton and Randolph
- Access to Fisherman's Cove is located at 1100 Randolph Street, Canton



Above: Project Location

Proposed Work

- Accessibility and safety improvements to the existing parking lot, access trail, and boat access at Fisherman's Cove
- Addition of stormwater management around the parking area to mitigate runoff into the pond and adjacent wetlands
- Restoration of an existing wetland adjacent to the pond, including native seed mix application and construction of permanent fencing for protection
- Install interpretive, educational, and wayfinding signage
- Install picnic tables, benches, and portable restrooms
- Implementation of Landscape Management Plan, including invasive species management, throughout the Ponkapoag Pond area, and install native landscaping

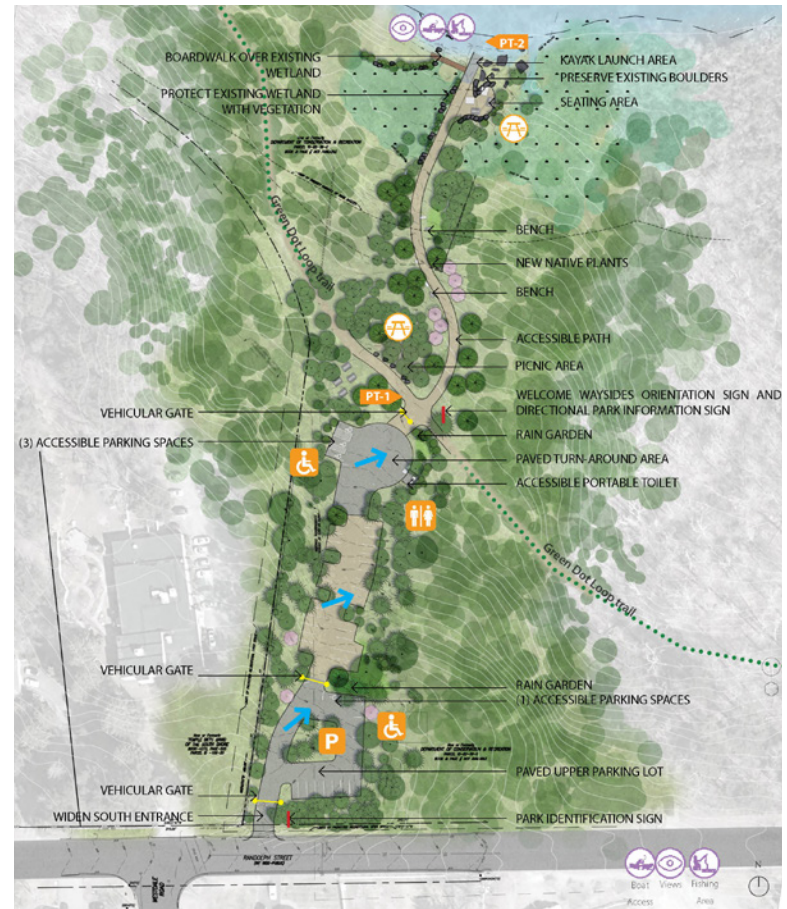
Project Goals

- Improve park user experience, universal accessibility, and safety
- Preserve and enhance natural resources and ecological integrity of the area
- Provide year-round access to natural resources, open space, water resources, recreational facilities, and educational opportunities
- Provide education to park users on the ecological value of the area
- Promote sustainable use of the area

Project Impacts and Benefits

- Potential short-term impacts may include dust generation, stormwater runoff, and lack of access to Fisherman's Cove during construction.
- Continuity of Green Dot Loop trail will be maintained for the majority of construction to minimize impacts to through-hikers.
- Stormwater runoff and dust will be mitigated using construction-period Best Management Practices
- Proposed rain gardens will provide long-term stormwater management and result in improvements to water quality
- Improved parking and access will provide a safer and more accessible experience for park users
- Net benefit to Environmental Justice Populations through year-round universally accessible recreational opportunities, stormwater treatment, invasive species management, habitat preservation, and wetland restoration
- Landscape and invasive plant management will preserve and protect native landscapes and habitat, while maintaining day-use areas

Below: Proposed Project Improvements



- P Proposed Parking Lot
- Wheelchair icon Proposed Accessible Parking
- Portable toilet icon Proposed Accessible Portable
- Blue arrow Stormwater Runoff
- Yellow arrow Vehicular Gate
- Red line New Park Signage
- Picnic table icon Proposed Picnic Area

Questions?

Contact MassDCR or Tighe & Bond, Inc. with questions and feedback.
Cassidy Chroust, MassDCR – (978) 621-4627 / Cassidy.Chroust@state.ma.us
Amanda Houle, Tighe & Bond, Inc. – (508) 304-6354 / AJHoule@tighebond.com



Conceptual rendering of proposed improvements at Fisherman's Cove entrance