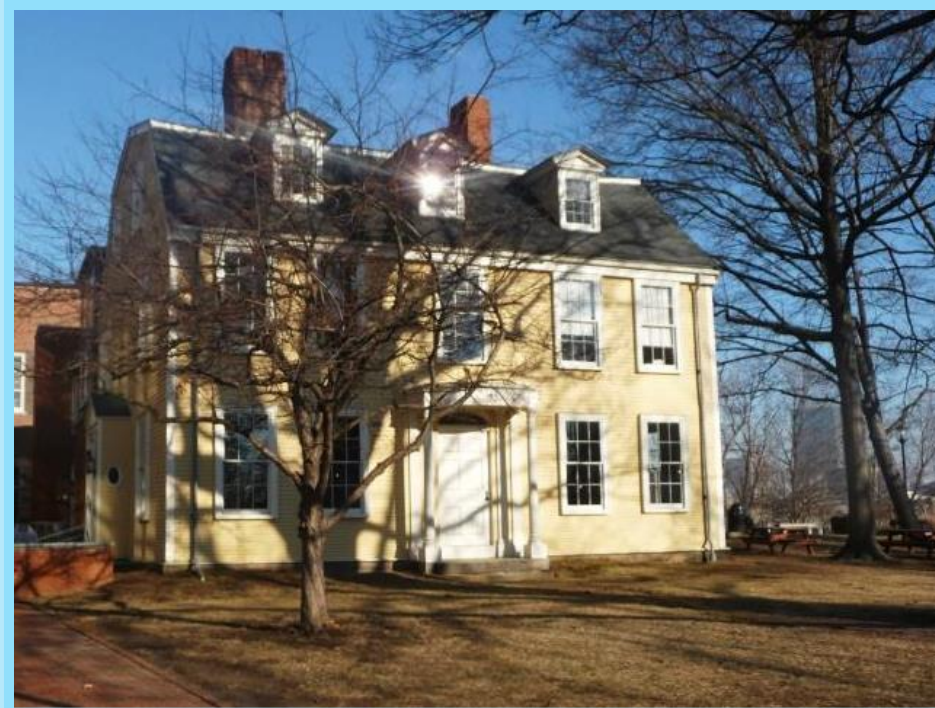


Roxbury Heritage State Park Signature Park Project



DCR Community Planning Workshop #3

May 29, 2014, 6:00 pm – 8:30 pm

First Church of Roxbury, Roxbury, MA



Commonwealth of Massachusetts

Governor

Deval L. Patrick

Executive Office of Energy and Environmental Affairs Secretary

Richard K. Sullivan, Jr.

Department of Conservation and Recreation Commissioner

John P. Murray

DCR MISSION STATEMENT



*To protect, promote and enhance our common wealth
of natural, cultural and recreational resources
for the well-being of all*

MEETING PURPOSE



To present the preferred alternative for an improved Roxbury Heritage State Park.

Roxbury Heritage State Park Project

PUBLIC PROCESS TO DATE

- Public Workshop #1
- Public Workshop #2
- Meetings with Stakeholder Groups
- Youth Roundtable
- Seniors Roundtable
- Ongoing Partnerships



Roxbury Heritage State Park Project
WHAT WE HEARD
Public Workshop and Stakeholder Meeting

What kind of experiences are visitors seeking when they come to Roxbury Heritage State Park?

- Make point(s) of arrival and entry clear, welcoming and pleasant
- Emphasize the view
- Integrate the house with the landscape and exhibits
- Make improvements to the house that support community use
- Offer interpretative experiences that facilitate the understanding of various aspects of Roxbury's history for all ages
- Maximize exhibit space



Roxbury Heritage State Park Project

WHAT WE HEARD

Public Workshop and Stakeholder Meeting

- Enlarge and improve the performance space
- Focus on Roxbury people and places
- Provide more outdoor programming space with weather protection
- Strike balance between making the park more accessible and keeping it safe and well maintained
- Accommodate different uses of the house such as community and other space needs with the experience of visiting an historic house and museum



PREFERRED ALTERNATIVE:

How did we derive at the Preferred Alternative?

What is a preferred alternative?

- Best meets the project goals
- Best meets interests of DCR and the public
- It is a CONCEPT (details to be developed)

How was the preferred alternative developed?

- Collecting input from the public, stakeholders and DCR
- Developing preliminary alternatives (presented at previous public workshop)
- Incorporating preferences



Roxbury Heritage State Park Project

PREFERRED ALTERNATIVE

Concept Plan: Park

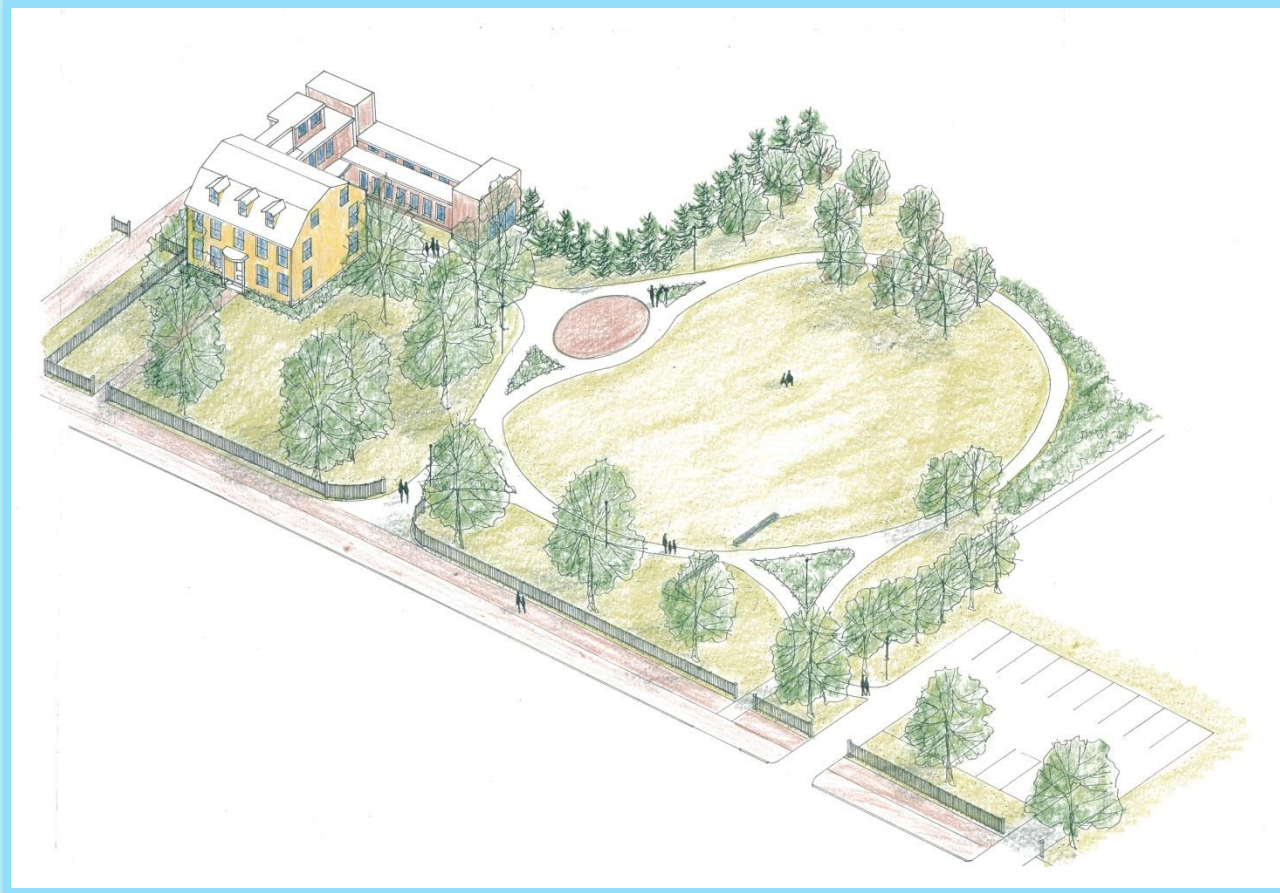


- Perimeter fence lowered to 4'-0"; extended along full length of park
- Parking area set back from street; resized to minimize pedestrian conflicts along Gay Street walkway
- Enhanced entrance at Roxbury Street leading into the center of the park
- Looping walkway through park, connecting entrance to several interpretive stops (near house, at View Master, in orchard, at puddingstone foundation wall remnants, all marked with signs)

Roxbury Heritage State Park Project

PREFERRED ALTERNATIVE

Highlights of Park Features



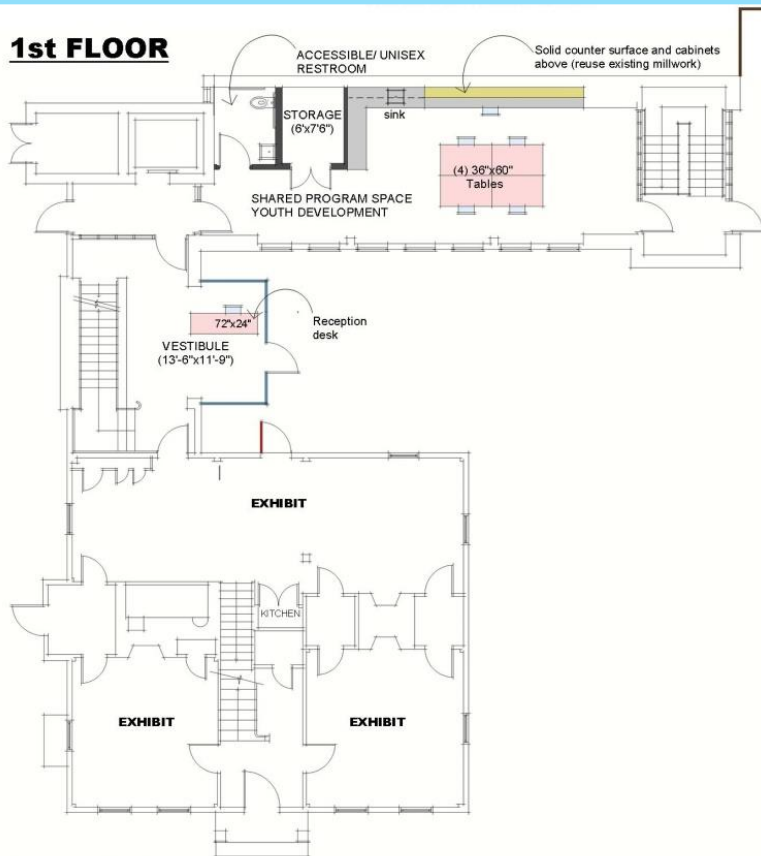
- 8' walk leading to enlarged and new vestibule at main entrance to building
- 20' x 35' space at park's highest point; expanded in size to allow for multiple types of programs and events
- Existing fruit orchard retained and supplemented
- Benches and lighting throughout

Roxbury Heritage State Park Project

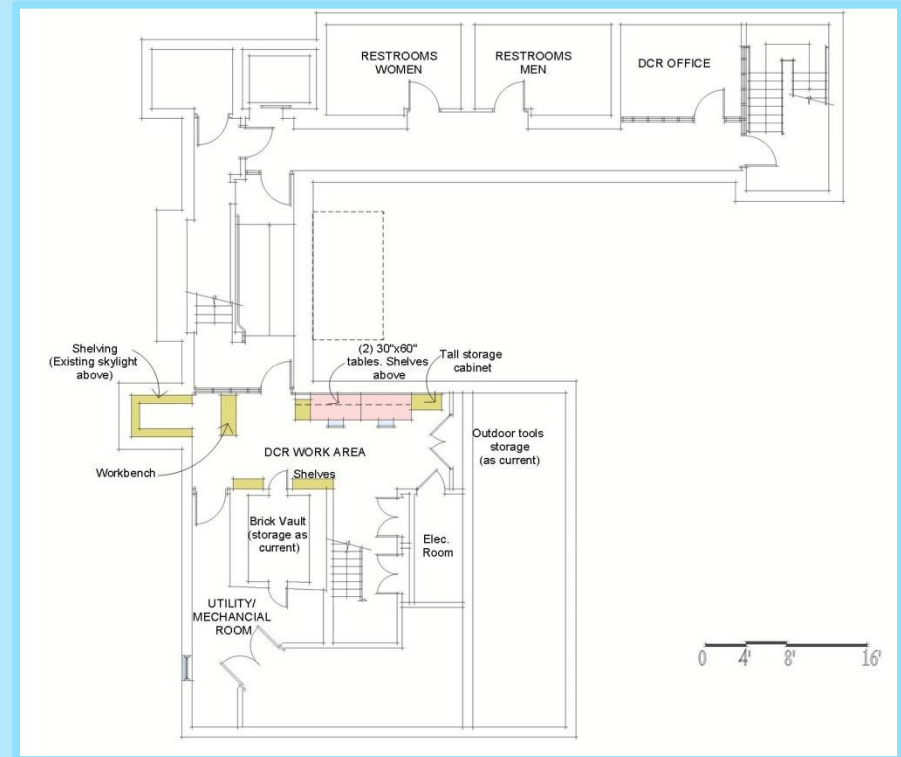
PREFERRED ALTERNATIVE:

Proposed Building Uses

1st FLOOR



1st Floor of the building is dedicated to public use.

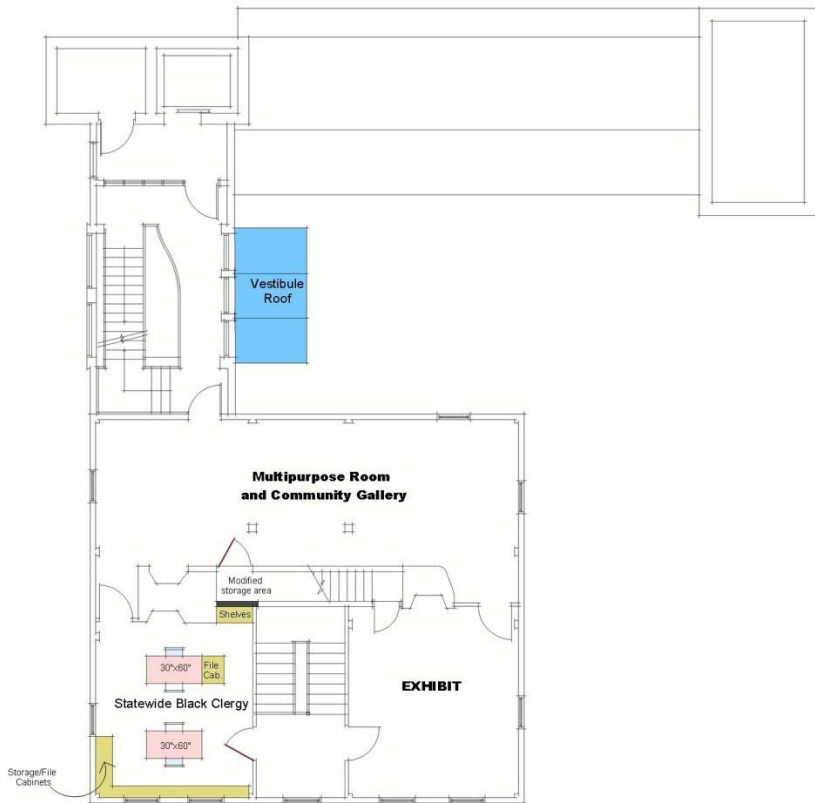


Basement: Public restrooms, utility and mechanical rooms, DCR staff

Roxbury Heritage State Park Project

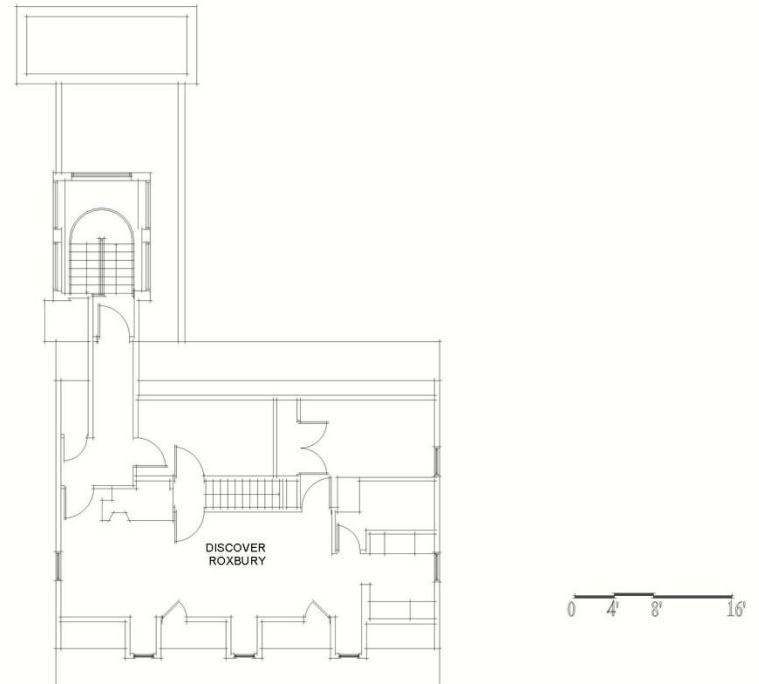
PREFERRED ALTERNATIVE: Proposed Building Uses

2nd FLOOR



2nd Floor: Public uses and
Statewide Black Clergy office.

3rd FLOOR



3rd Floor: Discover Roxbury

Roxbury Heritage State Park Project

PREFERRED ALTERNATIVE:

Highlights of Improvements to the House



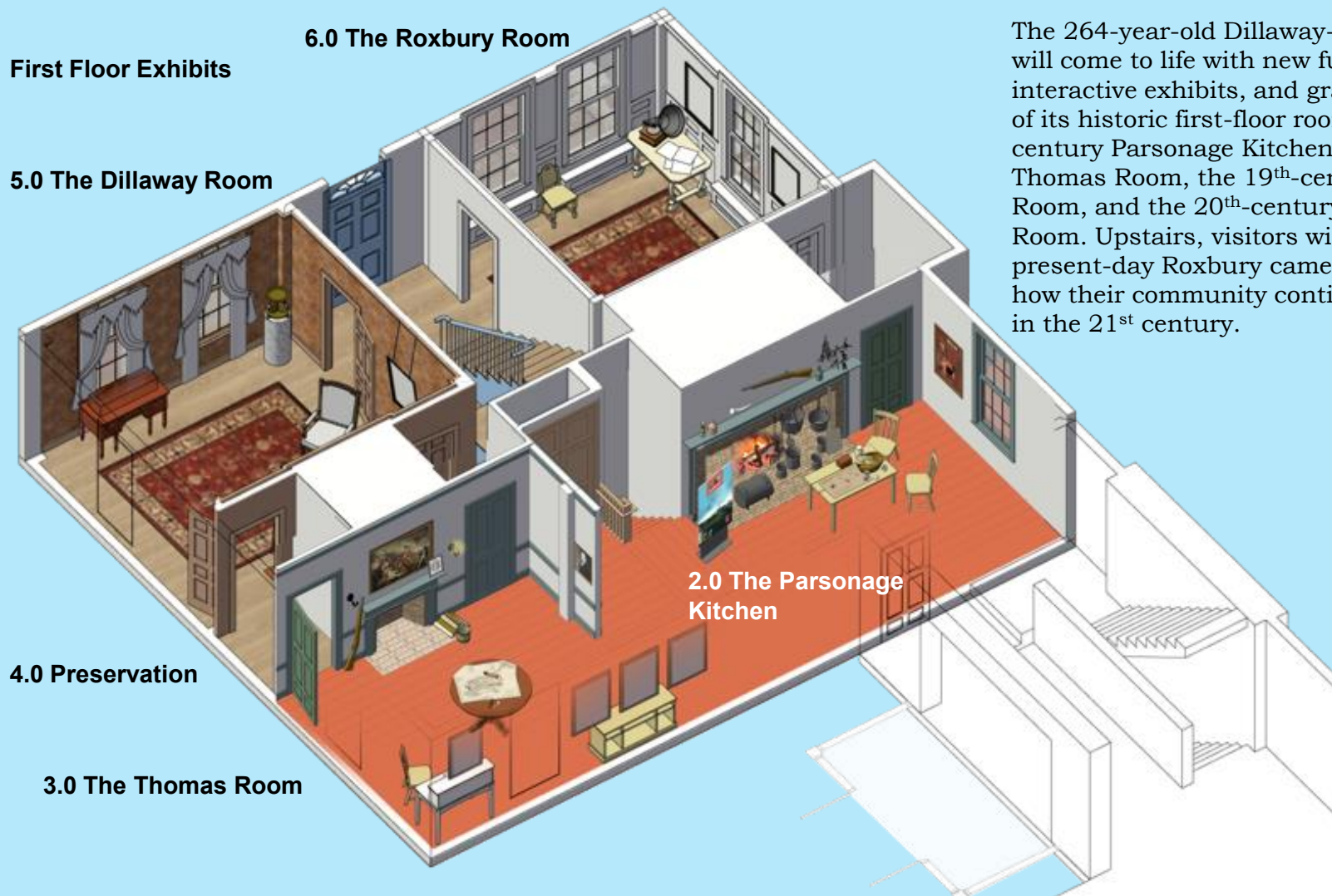
Three dimensional view of entrance to the Dillaway-Thomas House.

Architectural Improvements

- Improved entrance experience through an easy identifiable, expanded vestibule with reception holding information brochures and orientation materials
- Primary entrance is completely handicap accessible
- Shared Program/Youth Development space (multi-use, can function independently from activities in historic house)
- Improved bath rooms in the basement and additional restroom on first floor

Roxbury Heritage State Park Project

PREFERRED ALTERNATIVE: Exhibits Program



The 264-year-old Dillaway-Thomas House will come to life with new furnishings, interactive exhibits, and graphics in each of its historic first-floor rooms: The 18th-century Parsonage Kitchen and the Thomas Room, the 19th-century Dillaway Room, and the 20th-century Roxbury Room. Upstairs, visitors will explore how present-day Roxbury came to be – and how their community continues to thrive in the 21st century.

Roxbury Heritage State Park Project

PREFERRED ALTERNATIVE: Exhibits Program

**Second Floor Exhibits,
Community Space**

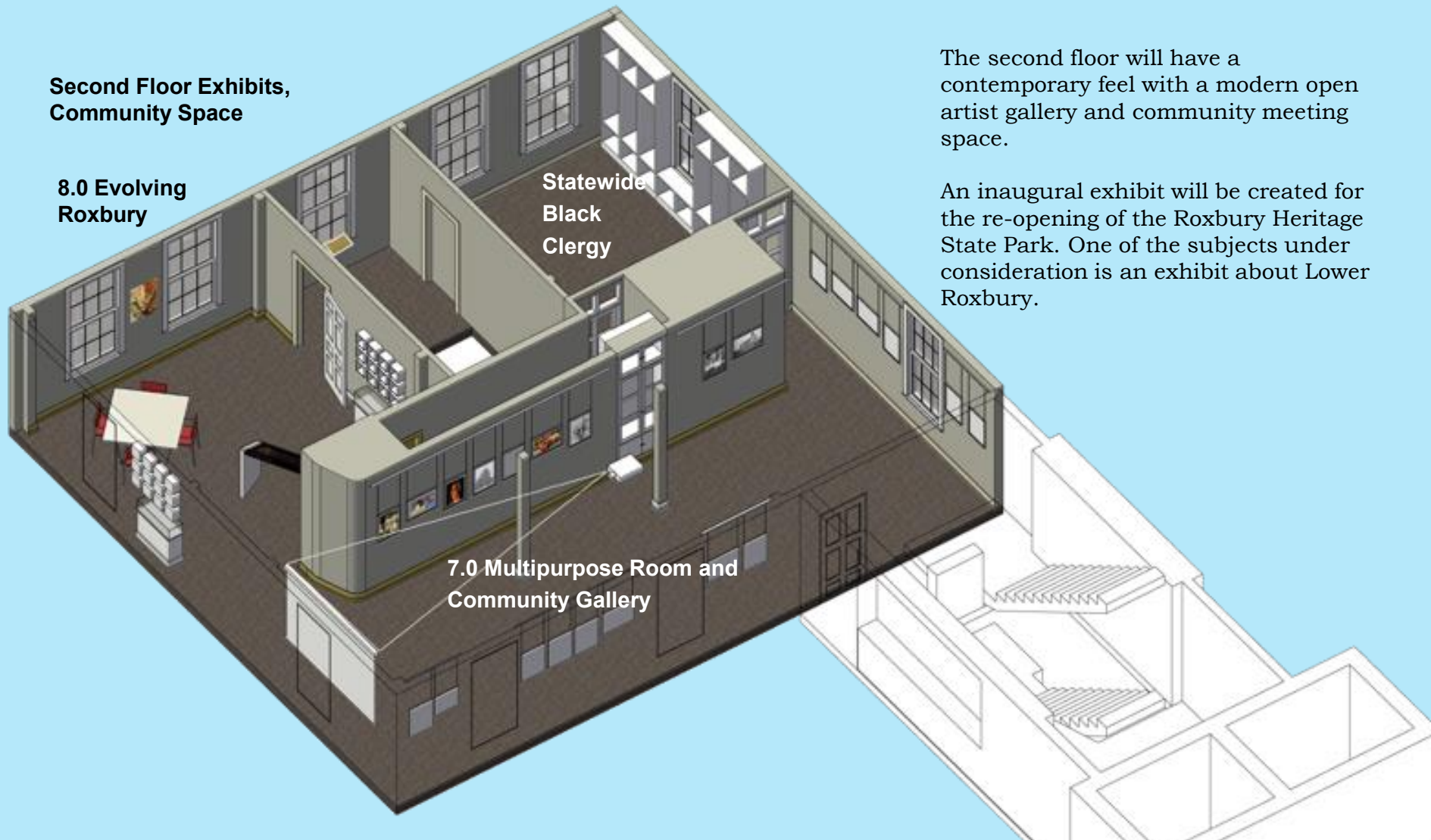
**8.0 Evolving
Roxbury**

**Statewide
Black
Clergy**

**7.0 Multipurpose Room and
Community Gallery**

The second floor will have a contemporary feel with a modern open artist gallery and community meeting space.

An inaugural exhibit will be created for the re-opening of the Roxbury Heritage State Park. One of the subjects under consideration is an exhibit about Lower Roxbury.



Roxbury Heritage State Park Project

PREFERRED ALTERNATIVE:

Highlights of Improvements to the House and Exhibits

Five Centuries of Roxbury—Bostons' s Enduring Heart

Exhibit Galleries include the following working concepts:

- **Parsonage Kitchen** – Meet the people at the heart of the house: the kitchen
- **Thomas Room** – America's Revolutionary spirit lives here.
- **Dillaway Room** – Education, scholarship, and innovation endured in Roxbury, even as Civil War divided the nation.
- **Roxbury Room** – A new century brought immense changes to Roxbury, to our nation, and to the world. Roxbury residents helped lead the way to a new era.
- **Roxbury II** – What happens next in 21st century Roxbury? **You** decide!



Hearth at Old Ordinary, Hingham, MA

Roxbury Heritage State Park Project

PREFERRED ALTERNATIVE: Design Parameters

- Modifications to the park and historic house are guided by the following parameters:
 - Historic status of the house
 - Age of the structure
 - Space
 - Budget



Roxbury Heritage State Park Project

Tonight: Let us begin...

- Visit stations
- Discuss details of the concept with the designers
- Make comments on post-it notes
- Listen to Report Back Summary from each station
- Discuss the preferred alternative as a large group



Roxbury Heritage State Park Project

NEXT STEPS

June 2014: Final design begins

August 2014: Project goes out to bid and construction begins

December 2014: *Project substantially complete and ribbon cutting!*

Stay in the Loop...

Updates on the project's progress will be made on the project website:
www.mass.gov/dcr/rhsp-project





Roxbury Heritage State Park Project

ADDITIONAL INFORMATION

If you have questions or comments-

Email: dcr.updates@state.ma.us

Call: 617-626-4974

Write: Department of Conservation and Recreation

Office of Public Outreach

251 Causeway Street, Suite 600, Boston, MA 02114

The deadline for public comments on the preferred alternative is June 5.

Note: Public comments submitted to DCR by email or letter will be posted on the DCR website in their entirety, and no content, including personal information, will be redacted.

If you would like to subscribe-

to a DCR project-related or general information listserv, please email

dcr.updates@state.ma.us, noting in the subject line to which listserv you would like to subscribe.

For more information-

www.mass.gov/dcr/rhsp-project