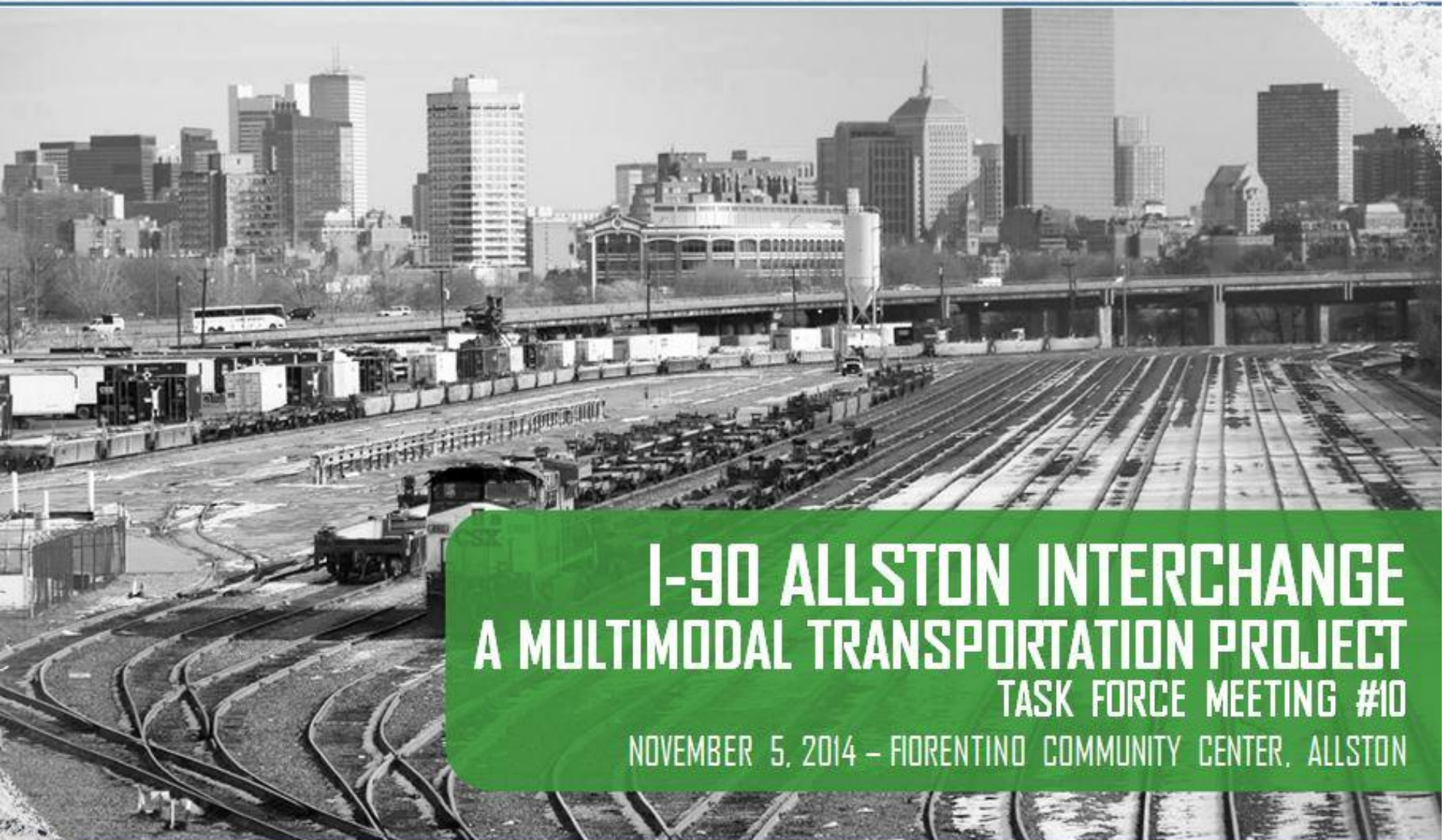




Allston I-90 Interchange Improvement Project



I-90 ALLSTON INTERCHANGE
A MULTIMODAL TRANSPORTATION PROJECT
TASK FORCE MEETING #10
NOVEMBER 5, 2014 – FIORENTINO COMMUNITY CENTER, ALLSTON

Task Force Administration

- **Minutes**
- **ENF distribution**
- **Update on meetings with government entities and stakeholders**

Boston Society of Architects Charette Briefing

- Recognized MassDOT incorporation of urban design elements
- Discussed difficulties in grade steepness and topography
- Reviewed potential design elements for “domesticated bridges”
- Shared concepts for stormwater controls and treatment of Salt Creek
- Discussed the value of a parallel street south of Cambridge St



BSA Charette



BSA Charette

Environmental Notification Form (ENF)

- **Filed: October 31**
- **Public Notice of Environmental Review in Newspapers:**
 - October 31 – El Planeta (Spanish Language)
 - November 3 – Boston Globe and Boston Herald
 - November 7 – Allston Brighton Tab
- **Noticed in Environmental Monitor: November 5**
- **Public Comment Period: through November 25**
- **“Scoping” Meeting: November 20**
 - On-site - 4 PM
 - Consultation Meeting – Brighton High School, 6 PM
- **ENF Certificate Issued: November 25**

ENF Contents

- Project exceeds mandatory Environmental Impact Report (EIR) threshold – **an EIR will be required**
- Standard ENF with 10 attachments
- Attachment 8: information on hazardous materials in project area

Commonwealth of Massachusetts
Executive Office of Energy and Environmental Affairs
Massachusetts Environmental Policy Act (MEPA) Office

Environmental Notification Form

For Office Use Only

EEA#: _____

MEPA Analyst: _____

The information requested on this form must be completed in order to submit a document electronically for review under the Massachusetts Environmental Policy Act, 301 CMR 11.00.

Project Name: **I-90 Allston Interchange Project**
Street Address: **I-90, Cambridge Street and Soldiers Field Road**
Municipality: **Boston (Allston)** Watershed: **Charles River**
Universal Transverse Mercator Coordinates: **42.357593**
4691660.71 N, 325275.40 E Longitude: **-71.121626**
Estimated commencement date: **2017** Estimated completion date: **2020**
Project Type: **Roads; Transit-Rail** Status of project design: **Conceptual Design (5 % complete)**
Proponent: **Massachusetts Department of Transportation (MassDOT)**
Street Address: **10 Park Plaza**
Municipality: **Boston** State: **MA** Zip Code: **02116**
Name of Contact Person: **James Cerbone**
Firm/Agency: **MassDOT** Street Address: **10 Park Plaza**
Municipality: **Boston** State: **MA** Zip Code: **02216**
Phone: **(857) 368-8792** Fax: **(857) 368-0609** E-mail: **james.cerbone@state.ma.us**

Does this project meet or exceed a mandatory EIR threshold (see 301 CMR 11.03)?
☒ Yes ☐ No

301 CMR 11.03(1)(a)1 – Direct alteration of 50 or more acres of land.

If this is an Expanded Environmental Notification Form (ENF) (see 301 CMR 11.05(7)) or a Notice of Project Change (NPC), are you requesting:

a Single EIR? (see 301 CMR 11.06(8))	<input type="checkbox"/> Yes <input checked="" type="checkbox"/> No
a Special Review Procedure? (see 301 CMR 11.09)	<input type="checkbox"/> Yes <input checked="" type="checkbox"/> No
a Waiver of mandatory EIR? (see 301 CMR 11.11)	<input type="checkbox"/> Yes <input checked="" type="checkbox"/> No
a Phase I Waiver? (see 301 CMR 11.11)	<input type="checkbox"/> Yes <input checked="" type="checkbox"/> No

(Note: Greenhouse Gas Emissions analysis must be included in the Expanded ENF.)

Which MEPA review threshold(s) does the project meet or exceed (see 301 CMR 11.03)?

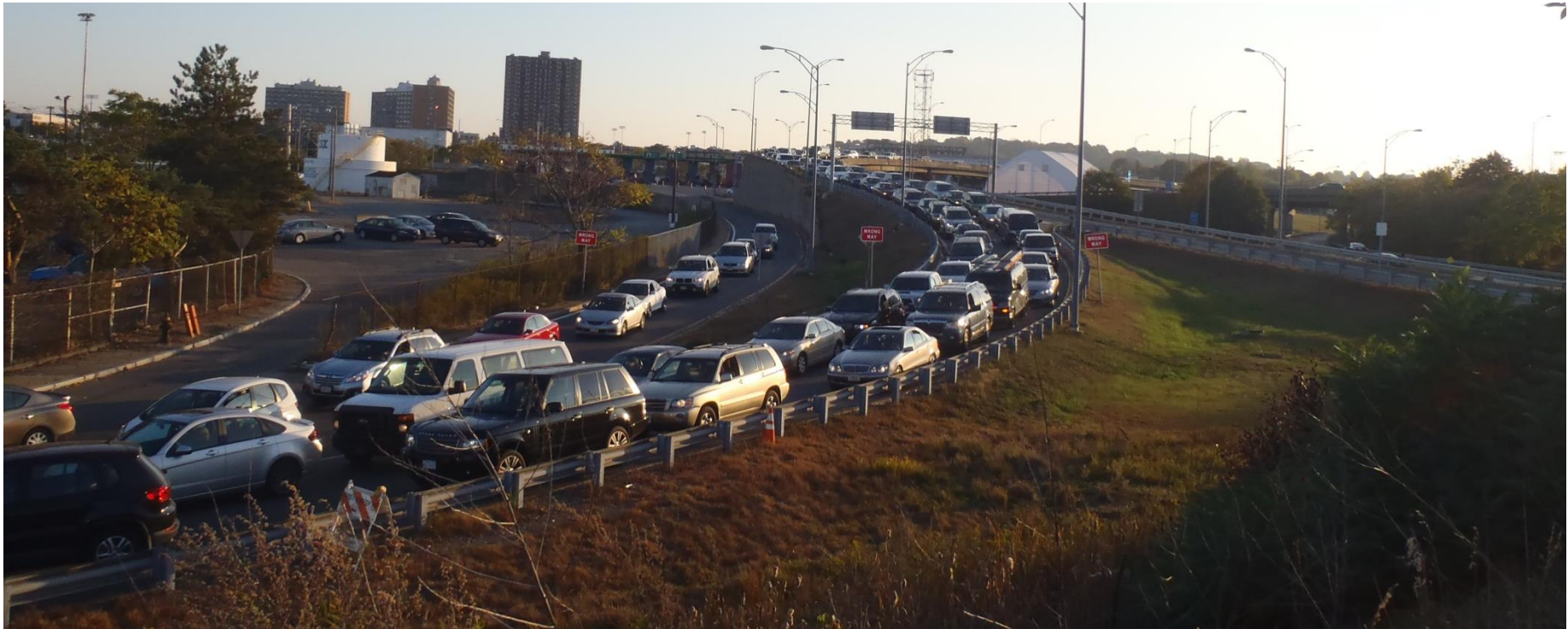
11.03(3)(b)5 – New non-water dependent use of tidelands.
11.03(6)(b)1.a – Construction of a new roadway one-quarter or more miles in length.
11.03(6)(b)1.b – Widening of an existing roadway by four or more feet for one-half or more miles.

Which State Agency Permits will the project require?

Effective January 2011

ENF Contents (cont.)

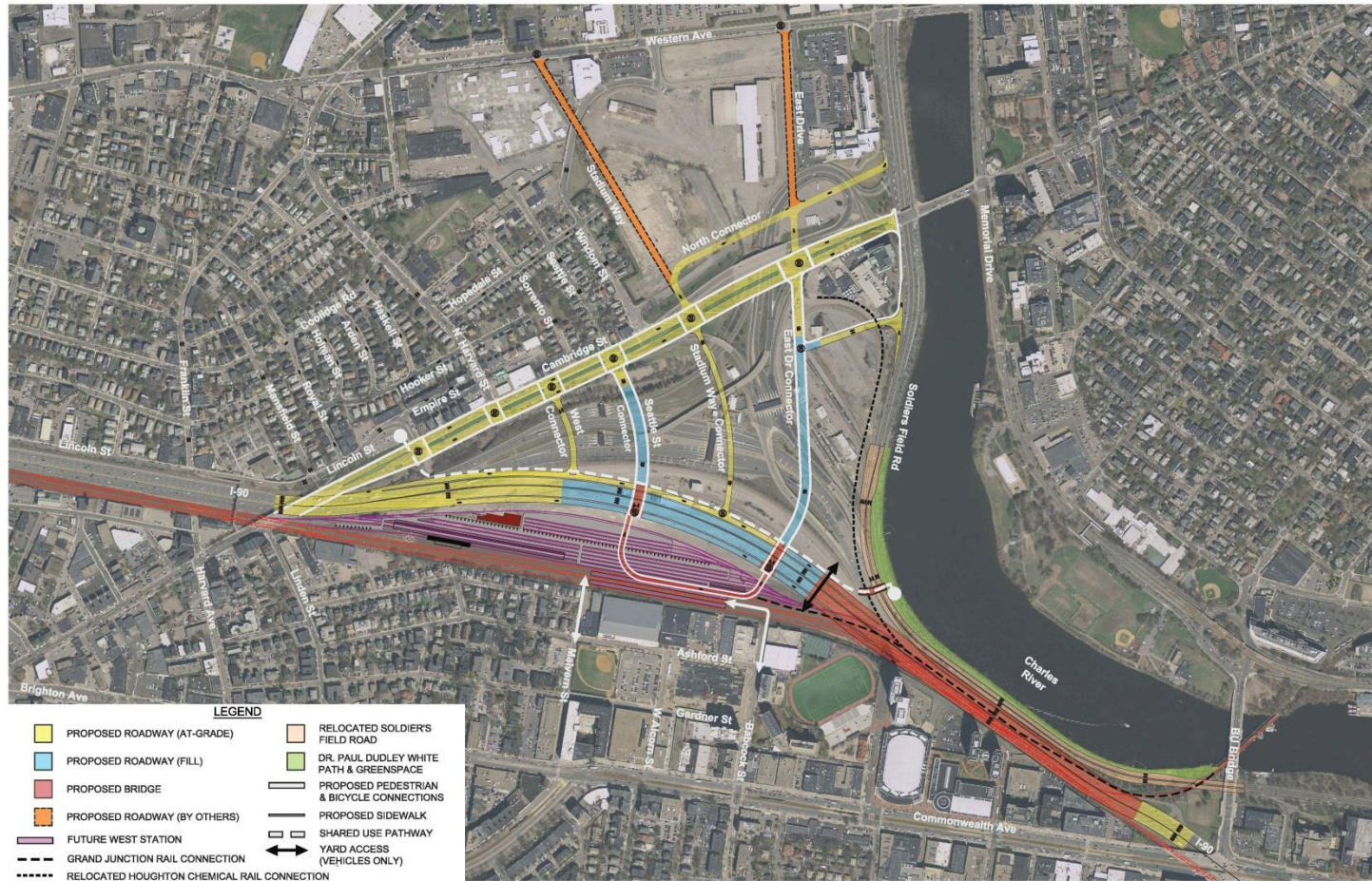
- **Attachment 9: Supplemental Information, Alternatives Development and Preliminary Screening of Alternatives**
- **Attachment 10: Summary of Public Involvement**



ENF Contents - Interchange

- Includes I-90 Interchange Alternative Designs 3J-1, 3J-2 and 3J-3
 - Suburban-type interchange concepts dismissed
 - 3J-1, 3J-2 and 3J-3 best meet goals of the project
 - Preferred concept identified
 - Reconstruct viaduct to interstate highway design standards with four travel lanes in each direction, with shoulders and breakdown lane
 - Shared-use Pathway alignment to be determined
 - Realignment of Soldiers Field Road to accommodate bicycle/pedestrian bridge to Paul Dudley White Bicycle Path

ENF Contents – Interchange 3J-1

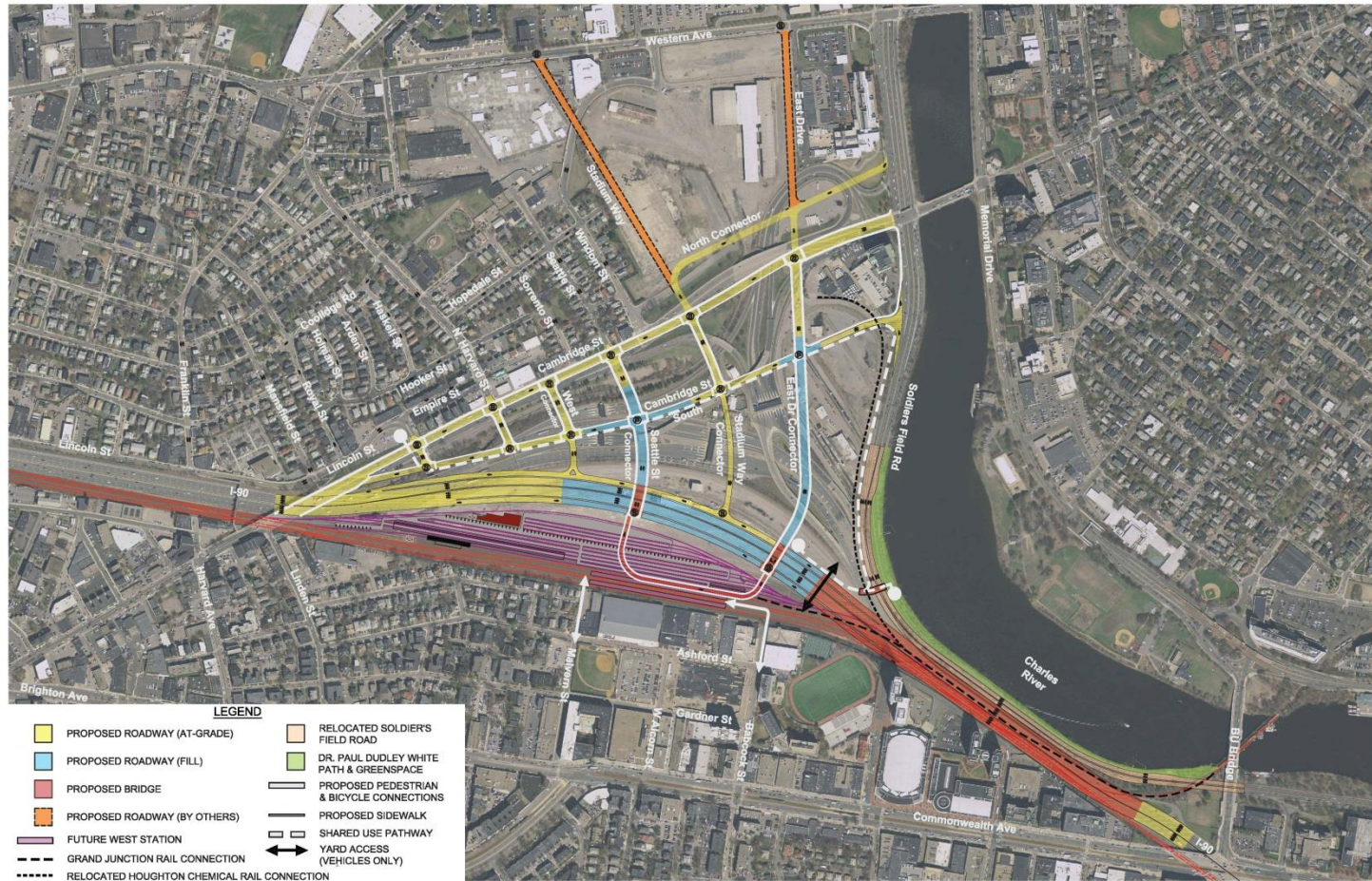


I-90 Interchange Allston, MA
Environmental Notification Form - October 2014

Option 3J-1

FIGURE
11A

ENF Contents – Interchange 3J-2

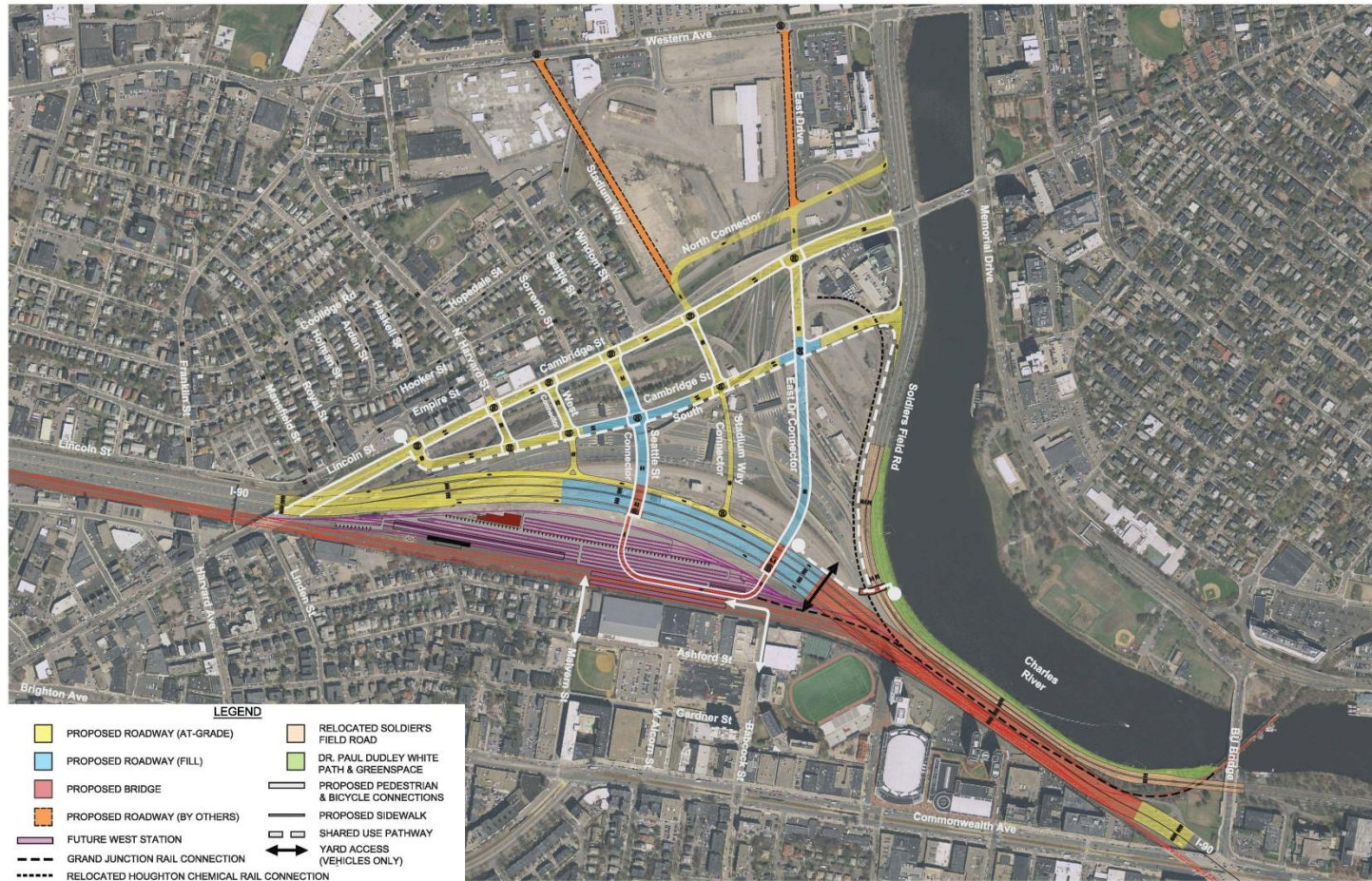


I-90 Interchange Allston, MA
Environmental Notification Form - October 2014

Option 3J-2

FIGURE
11B

ENF Contents – Interchange 3J-3



I-90 Interchange Allston, MA
Environmental Notification Form - October 2014

Option 3J-3

FIGURE
11C

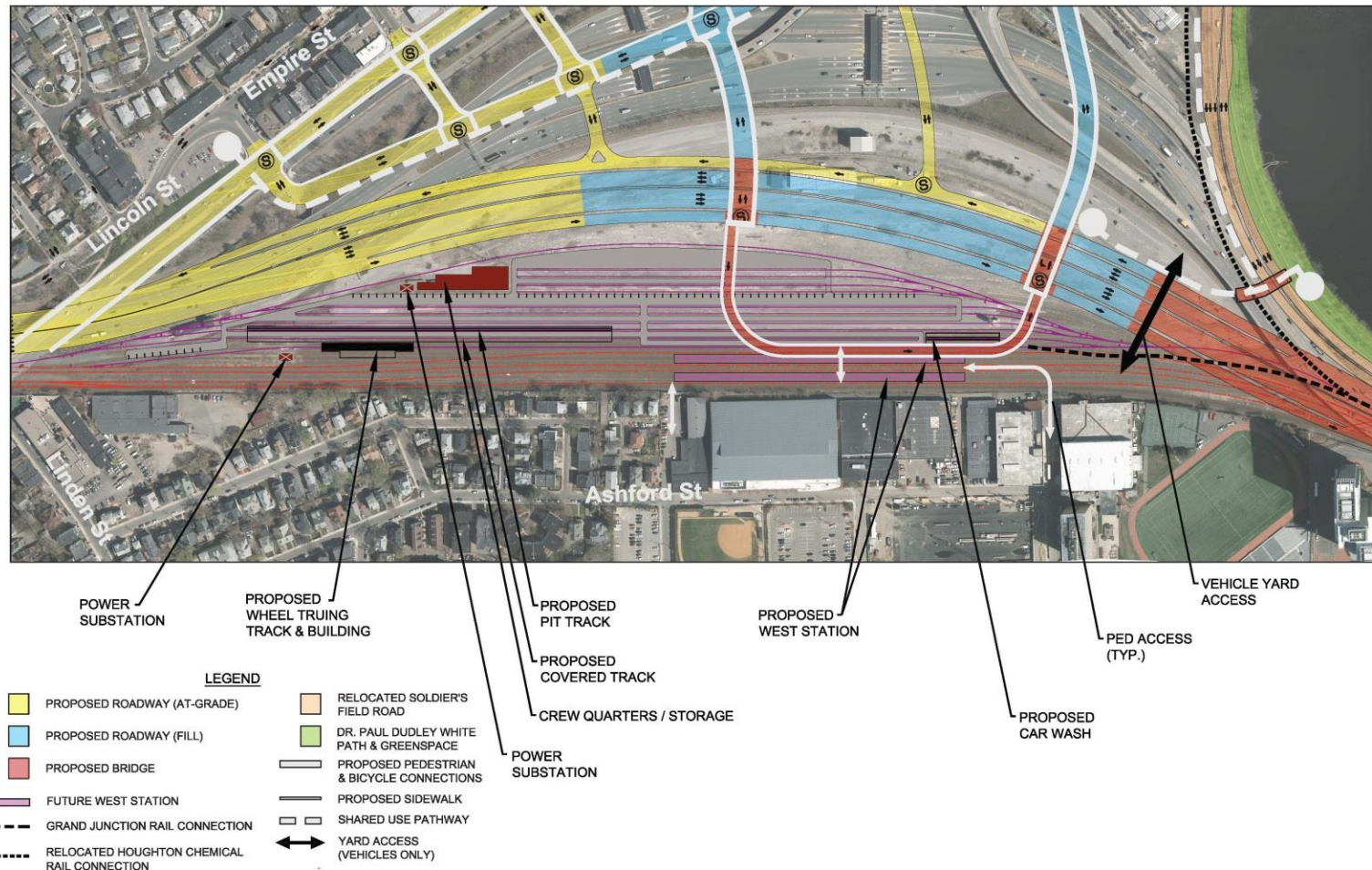
ENF Contents – West Station

- **West Station**
 - Two tracks with four platforms
 - Bus loop on viaduct accessing mezzanine level of station
 - Bicycle/pedestrian access from north and south with continuous bicycle/pedestrian access across RR without entering station
 - Bicycle/pedestrian connection from Babcock Street access point to the Paul Dudley White Bicycle Path
 - Design development to consider feasibility of two-way bus loop, “kiss and ride” and provisions for shuttles and taxis
 - Accommodate potential future DMU service to North Station via GJL

ENF Contents – Layover Yard

- **Commuter rail layover and ancillary facilities –
South Station expansion Draft Environmental Impact Report**
 - Need for layover capacity for commuter rail operations to the west of south station to provide a more-balanced mix of layover sites
 - Operational support functions - covered pit track, wheel truing facility, train car wash, power substation, and crew quarters
 - Noise barrier along south side of RR tracks adjacent to residential neighborhood

ENF Contents – West Station & Layover Yard



I-90 Interchange Allston, MA
Environmental Notification Form - October 2014

West Station and
Layover Yard

FIGURE
11D

ENF Contents – Cambridge Street

- **Redesigned in accordance with MassDOT and city of Boston Complete Streets design guidelines**
- **Sidewalks on either side of the street separated from a cycle track by a planted buffer**
- **Separate parking lane with bus stops at intervals**
- **Travel and/or turning lanes – number varied by design alternative**
- **Bicycle/pedestrian accommodations included in all design alternatives**

ENF Contents – Bicycle/Pedestrian Accommodations

- **Cambridge Street**
- **Segments south of Cambridge Street**
- **Connections to West Station**
- **West Station to area near Ashford Street**
- **Shared-use Pathway (“People’s Pike”) – more direct connection from Cambridge/Lincoln Streets to Charles River and Paul Dudley White Bicycle path**
- **New bicycle/pedestrian bridge over Soldiers Field Road**
- **Final alignment of Shared-use Pathway and location of bicycle/pedestrian bridge to be determined**
- **Replacement of Lincoln Street pedestrian bridge over I-90**

ENF Contents - Alternatives

- **Sixteen interchange alternatives identified with preliminary screening results included in Attachment 9**
- **Cambridge Street design alternatives:**
 - **Two-way Cambridge Street with parking/bus stop lane and turning lanes at I-90 ramp connection intersections**
 - **One-way pair with narrower Cambridge Street for westbound traffic and parallel roadway south of Cambridge Street for eastbound traffic**
 - **Two-way pair with two-way traffic on Cambridge Street and parallel roadway south of Cambridge Street**

ENF Contents – No Build Alternative

- No Build alternative serves as future baseline to compare impacts of project
- No Build alternative includes:
 - Toll plaza removed and all electronic tolling gantries installed
 - Barriers installed in area of toll plaza to narrow I-90 to four lanes in each direction
 - No modifications to existing interchange ramps
 - No changes to Cambridge Street
 - No changes to the intersection of Cambridge Street/River Street with Soldiers Field Road
 - West Station will not be constructed

ENF Contents – No Build Alternative (cont.)

- Accommodation of second track for future DMU service on GJ will not be made
- No Shared-use Pathway, bicycle/pedestrian accommodations and other multi-modal improvements
- Stadium Way constructed by others
- Soldiers Field Road will not be relocated and no additional parkland will be created
- No improvements to stormwater runoff water quality will be made
- Highway noise mitigation will not be implemented
- Commuter rail layover yard will be constructed

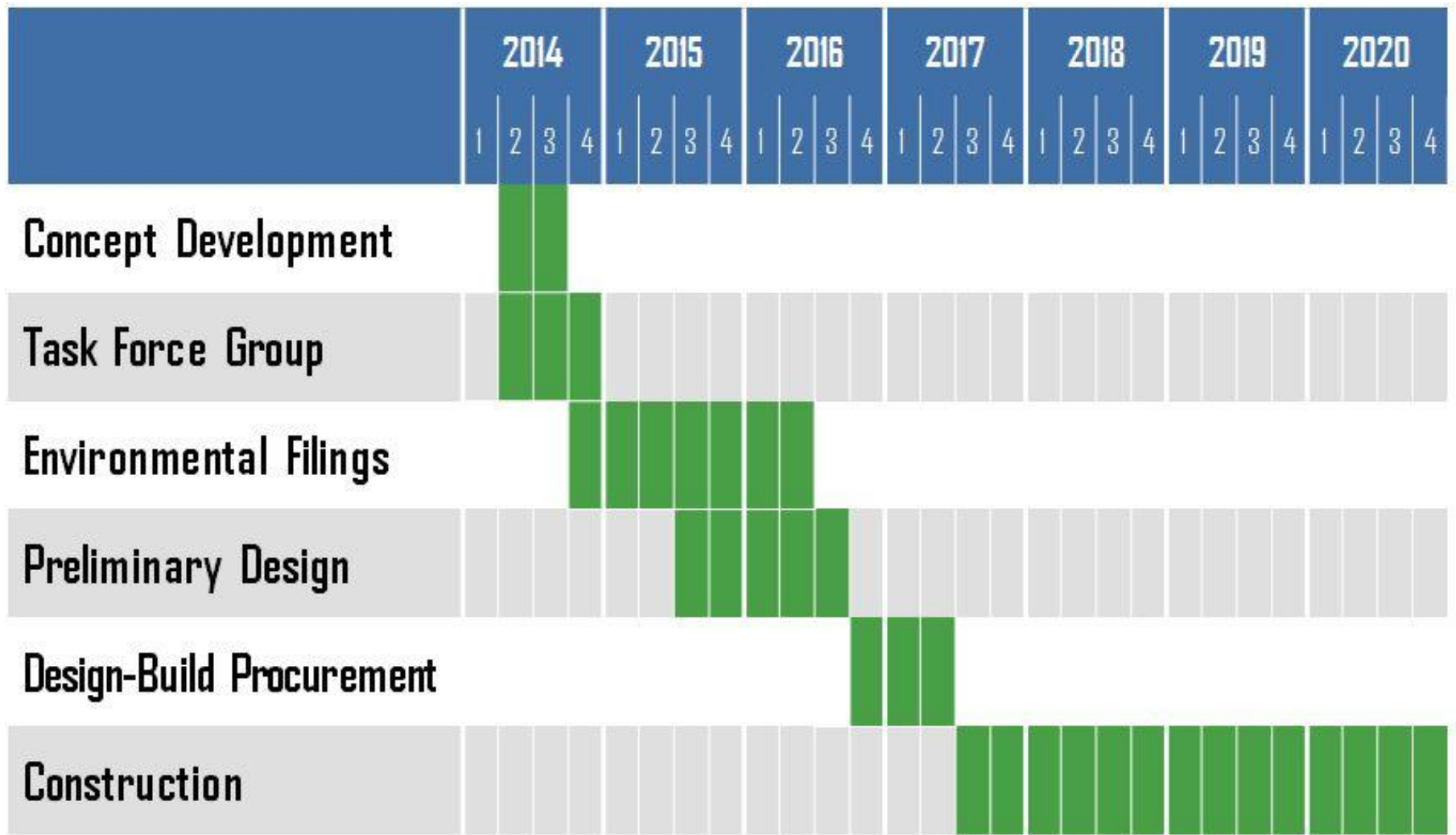
ENF Contents – Public Outreach

- **Description of Task Force**
- **Listing of Task Force, public, and agency coordination meetings**
- **Detailed summary of meetings included in Attachment 10**
- **Task Force input into design alternatives:**
 - **Overall emphasis on neighborhood cohesion**
 - **Advancement of urban interchange concepts**
 - **Integration and location of West Station into the project**
 - **Incorporation of Shared-use Pathway providing a route from North Allston to the Charles River**

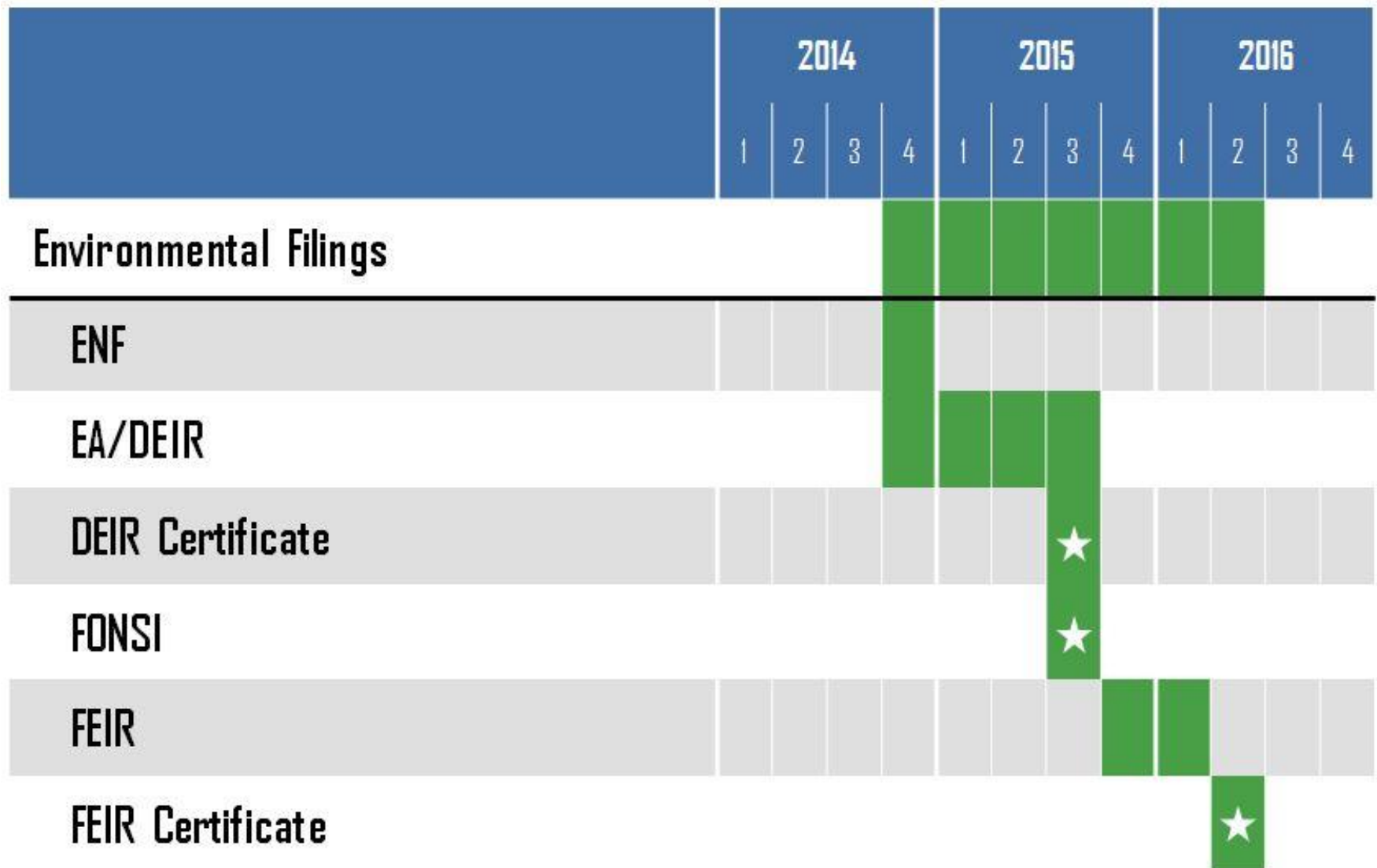
ENF Contents – Public Outreach (cont.)

- **Task Force input into design alternatives:**
 - Inclusion of bicycle/pedestrian connections throughout the project including connections to the Charles River waterfront, Cambridge, West Station and the BU area
 - Flexibility for future land use development opportunities
 - Importance of discouraging cut-through traffic on residential streets
 - Defining scale of Cambridge Street and including sidewalks, cycle tracks, and on-street parking to create urban streetscape
 - Focus on reducing impact of interchange roadways on surrounding neighborhood

Preliminary Project Timeline



Environmental Timeline



ENF – Filing Comments

- **Comment Deadline – November 25**

**Secretary Maeve Vallely Bartlett
Executive Office of Energy & Environmental Affairs
Attn: MEPA Office, EEA #15278
100 Cambridge Street, Suite 900
Boston, MA 02114**

- **Please send a copy of your comments to:**

**MassDOT Highway Division
Environmental Services Section
Attn: James Cerbone
10 Park Plaza, Room 4260
Boston, MA 02116
James.Cerbone@state.ma.us**

ENF Contents – Additional Design Elements

- Shared-use Pathway location, width, features, etc.
- Replacement of pedestrian bridge over I-90
- Sidewalk and cycle track treatment along Cambridge Street and other roadways
- Travel lanes/intersection layout for Cambridge Street
- Other roadways including parallel roadways north and south of Cambridge Street
- Location of bicycle/pedestrian bridge over Soldiers Field Road
- Extent of the relocation of Soldiers Field Road
- Allocation of open space within the area of relocated Soldiers Field Road

ENF Contents – Additional Design Elements (cont.)

- **West Station including connections to the north and south**
- **Rail layover yard configuration and operations**
- **Viaduct configuration**
- **Approach roadways to West Station**
- **Incorporate Central Transportation Planning Staff Regional Traffic Study**
- **Noise, vibration and air quality analysis – combined transit and highway impacts and mitigation**
- **Providing a project design that would not preclude a future two-track Grand Junction Railroad crossing**

ENF Contents – Additional Design Elements (cont.2)

- Stormwater treatment and feasible Best Management Practices
- State Highway “No Access” limits on connecting roadways and
- Construction staging concepts



Design Schedule Critical Elements

- **Interchange/Street Network**
 - Incorporate CTPS traffic model
 - Further detail street grid
- **Viaduct**
 - Configuration and Construction Staging
 - Provisions for future two track GJ
- **Rail Layover**
 - Configuration and influences on interchange
- **West Station**
 - Operational analysis
 - Advance overall layout including circulation



Design Phase Public Involvement

- Quarterly public information meetings to keep community updated
- Public information meeting “road show” in Metrowest for I-90 commuters
- Briefings to community groups upon request
- Continued presence of dedicated public involvement team member to document meetings, answer email questions, etc.
- Continued upkeep of the MassDot project website