



I-90 ALLSTON INTERCHANGE

A MULTIMODAL TRANSPORTATION PROJECT

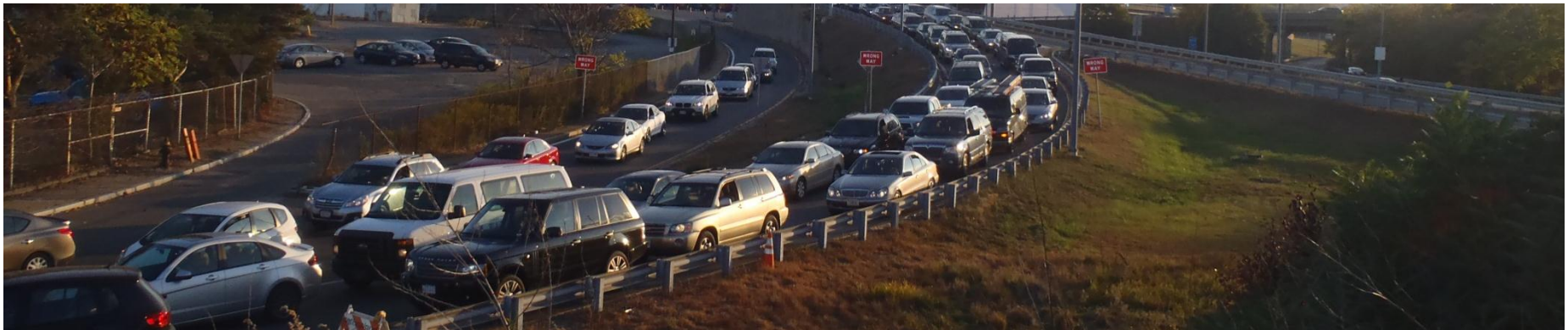
PUBLIC INFORMATION MEETING
SEPTEMBER 18, 2014 – JACKSON MANN COMMUNITY CENTER

Project Need

- Deteriorating viaduct requiring replacement
- All Electronic Toll (AET) system requiring removal of the toll plaza
- Traffic congestion and safety issues requiring improvement
- Constrained access of alternative transportation modes requiring improvement
- Anticipated future development increasing the demand for public transportation

Project Purpose

- To replace existing viaduct and reduce maintenance costs
- To improve the flow of traffic through the project area
- To improve safety along I-90 by removing the existing toll plazas and providing geometric features in compliance with Highway Design Standards
- To improve safety within the project area by providing improvements at affected intersections



Project Purpose (cont.)

- To reduce congestion and offer alternative (or non-motorized) modes of transportation, addressing local and regional air quality
- To provide the infrastructure to support construction of West Station and future commuter rail services
- To enhance infrastructure to support alternative (or non-motorized) modes of transportation within the project area.



Shared Priorities

- ✓ *Improve safety for all modes: walking, cycling, driving, transit*
- ✓ Realign I-90
- ✓ Context sensitive design or:
 - ✓ Lessen impact of interchange
 - ✓ Avoid inducing cut-through traffic with new configuration
 - ✓ Reconnect sections of Allston to each other and the River
- ✓ Protect the neighborhood during construction
- ✓ A more vibrant Cambridge Street that serves all modes
- ✓ Accessibility to transit at future West Station

Project Area



West Station Included in Scope



Task Force Update

- Membership

Allston Interchange Taskforce Membership

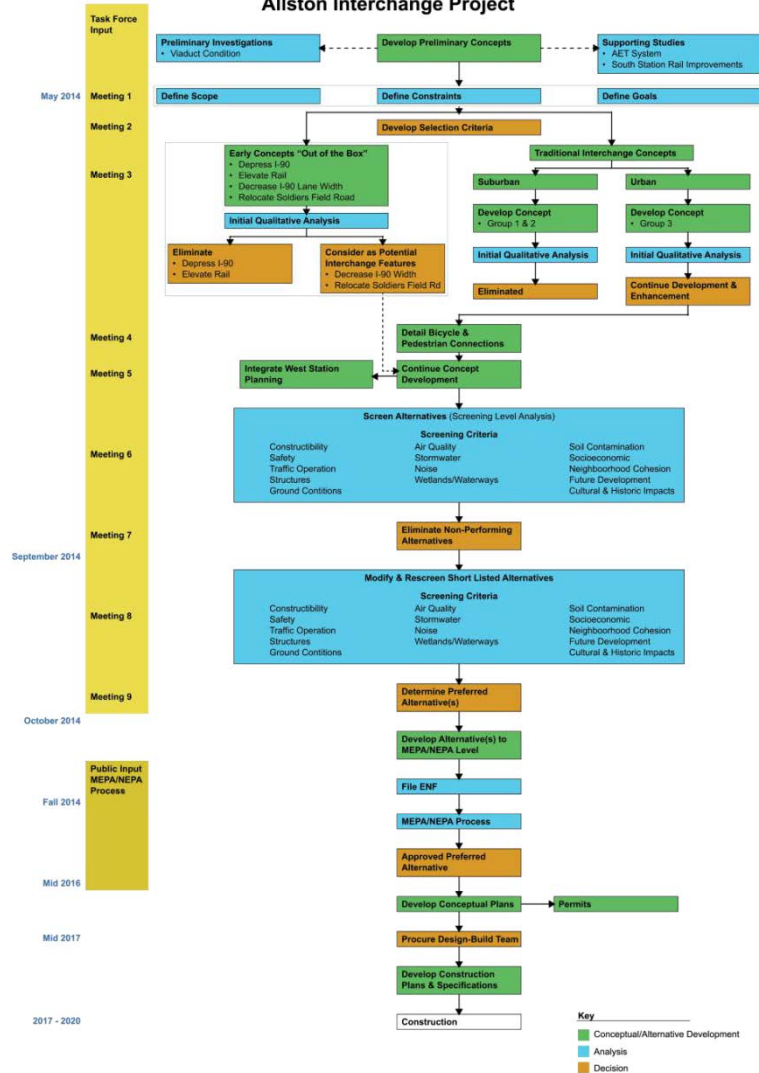
Name	Representing	Name	Representing	Name	Representing
Joseph Beggan	Harvard University	Rochelle Dunne	Allston Resident	Mary Maguire	AAA Southern New England
Glen Berkowitz	LivableStreetsAlliance	Paola Ferrer	Allston Resident	Harry Mattison	Charles River Conservancy
Andrew Bettenelli	Office of Senator Brownsberger	Nicole Freedman	Boston Bikes Program	Galen Mook	Allston Resident
Sen. William Brownsberger	2 nd Suffolk & Middlesex	James Gillooly	BTD	Rep. Michael Moran	18 th Suffolk
Steve Bushnell	Office of Senator DiDomenico	Anabela Gomes	Allston-Brighton Improvement	Tom Nally	ABC
Craig Cashman	Office of Representative Moran	Vineet Gupta	BTD	Paul Nelson	MASCO
Councilor Mark Ciommo	District 9 Boston	Kevin Handley	Office of Councilor Ciommo	Alana Olsen	Allston Village Main Streets
Nick Clemons	Office of Congressman Kennedy	Rep. Kevin Honan	17 th Suffolk	Joe Orfant	DCR
Ken Coehlo	Federal Highway Administration	Bruce Houghton	Houghton Chemical	John Pourbaix	Construction Industries of MA.
Jim Curley	Office of Representative Honan	Marc Kadish	Allston Board of Trade	Susanne Rasmussen	City of Cambridge Planning Department
John Cusack	Allston Resident	Stephen Jones	MBTA	Tad Read	BRA
Matt Danish	Allston Civic Association	John Laadt	Office of Neighborhood Services	Jessica Robertson	Allston Resident
Bill Deignan	City of Cambridge Planning Department	Wendy Landman	walkBoston	Steve Silveira	Boston University
Sen. Sal DiDomenico	1 st Suffolk & Middlesex	Elizabeth Leary	Boston University	David Watson	Mass Bike
Rick Dimino	ABC	David Loutzenheiser	MAPC	Kevin Wright	Federal Highway Administration
Anthony D'Isidoro	Allston Civic Association	Will Luzier	Allston Resident	Jillian Zywien	Mass Motor Association
Brian Doherty	Boston Building Trades	Wayne MacKenzie	Allston Resident		

Task Force Update 1

- Membership
- Flow Chart

Project Flow Chart

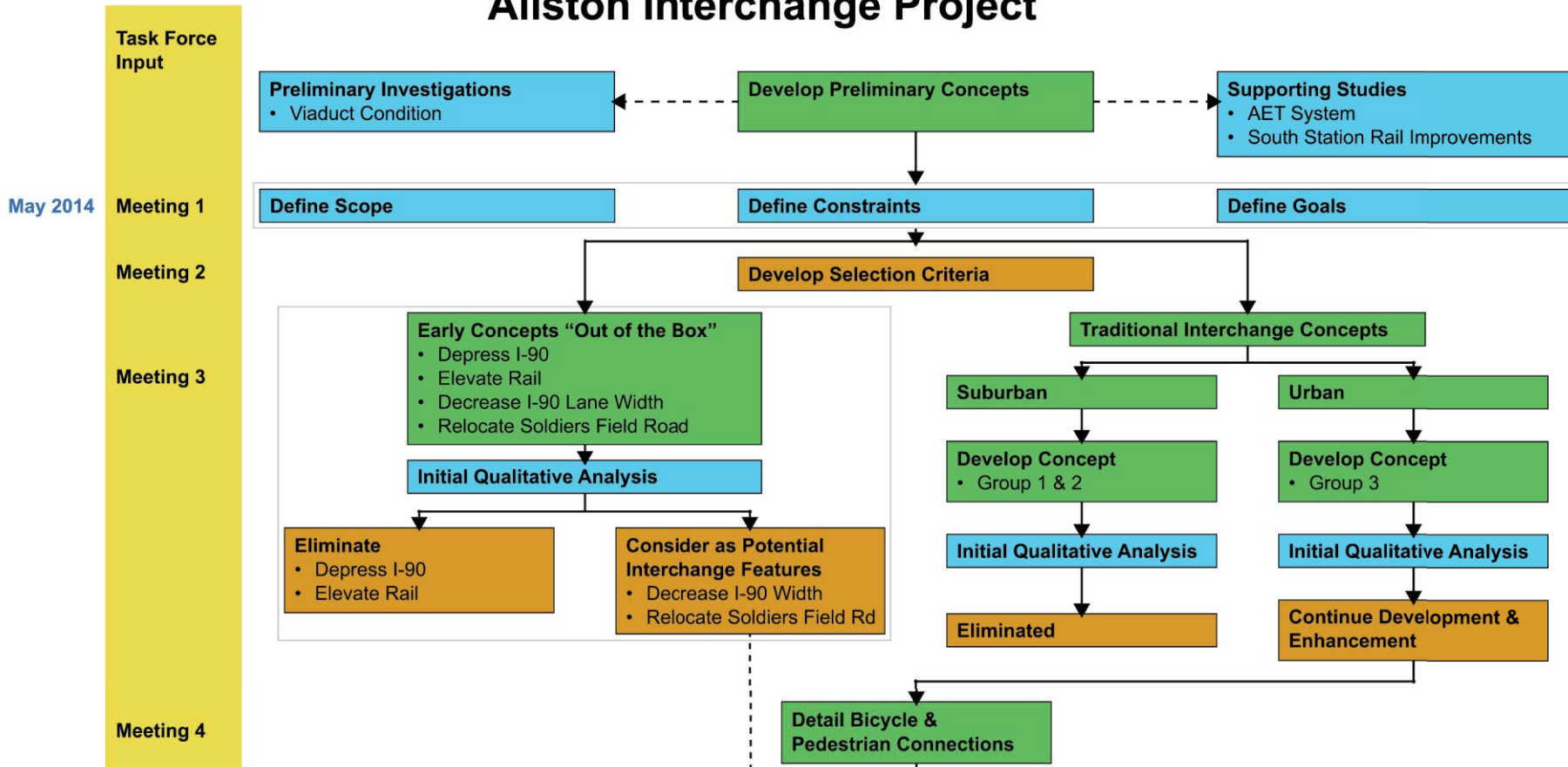
Allston Interchange Project



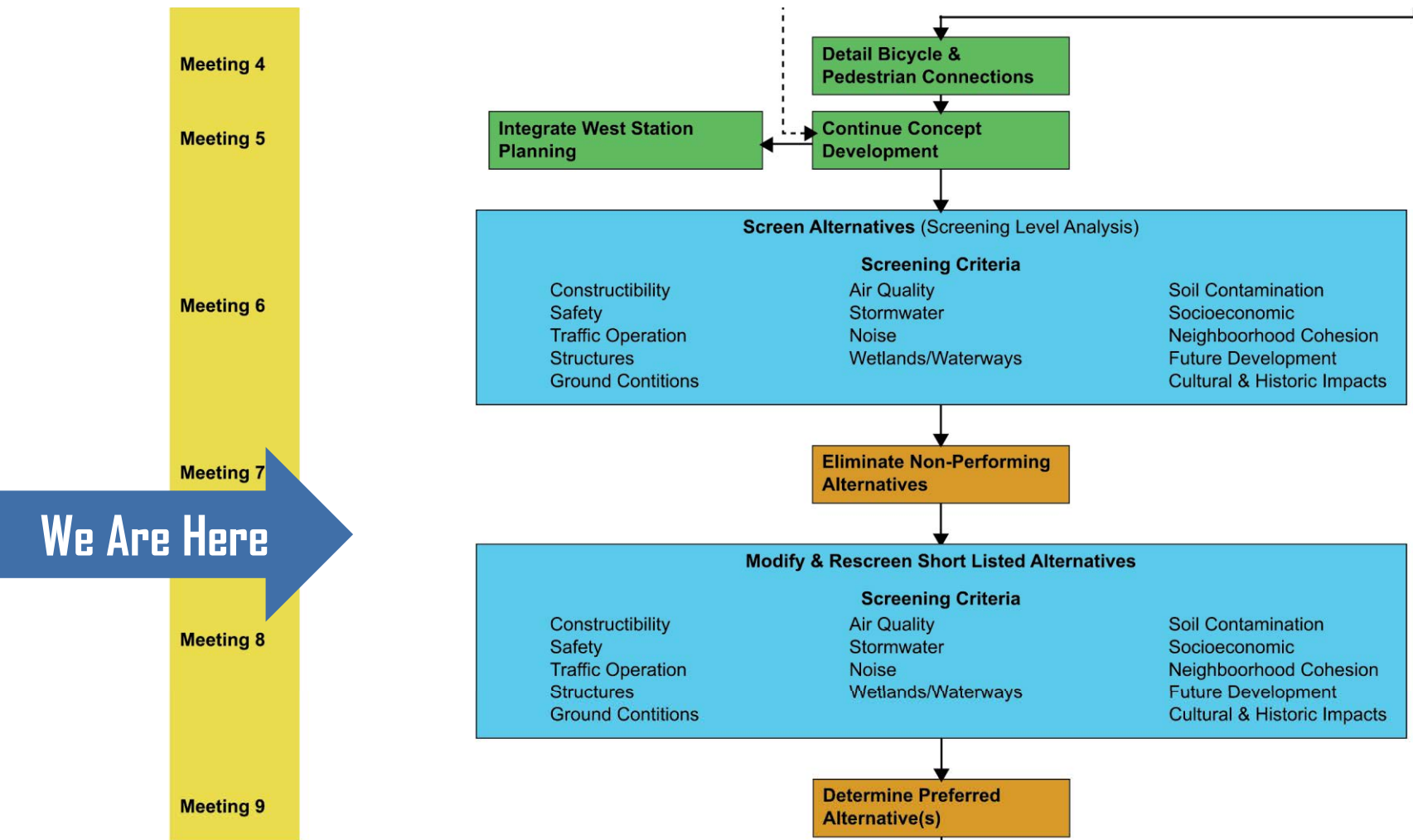
We Are Here

Project Flow Chart 1

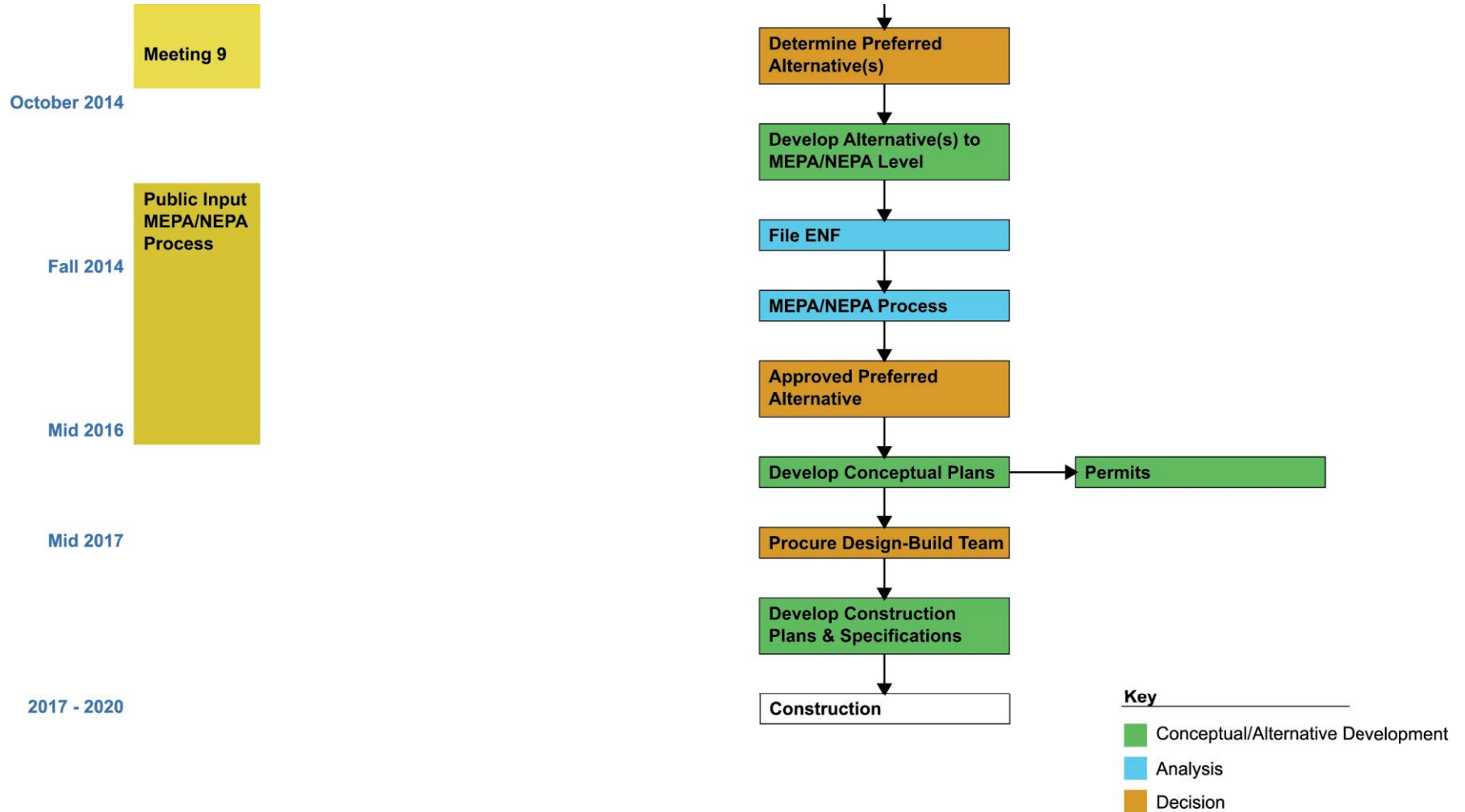
Allston Interchange Project



Project Flow Chart 2



Project Flow Chart 3



Task Force Update 2

- Membership
- Flow Chart
- Influences

Task Force Influences on Concept Development

- Overall emphasis on neighborhood cohesion
- Advancement of urban interchange concepts
- Integration and location of West Station into the project
- Incorporation of a shared use path providing a route from North Allston to the Charles River
- Inclusion of bicycle and pedestrian connections throughout the project including connections to the Charles River waterfront, Cambridge, West Station and the Boston University area
- Flexibility for future land use development opportunities

Task Force Influences on Concept Development (cont.)

- Importance of a traffic design which discourages cut-through traffic on residential streets
- Defining the scale of Cambridge Street and including sidewalks, cycle tracks, and on-street parking to create an urban streetscape.
- Focus on reducing the impact of the interchange roadways on the surrounding neighborhood.

Project Coordination

Additional Project Team Meetings

- City of Boston/Boston Transportation Department/
Boston Redevelopment Authority
- Department of Conservation and Recreation
- Massachusetts Environmental Policy Act (MEPA) Unit
- Central Transportation Planning Staff
- City of Cambridge
- Harvard University/Boston University
- LivableStreets Alliance
- Charles River Conservancy/Esplanade Association
- Site Tour and Bike Tour

Alternatives Development

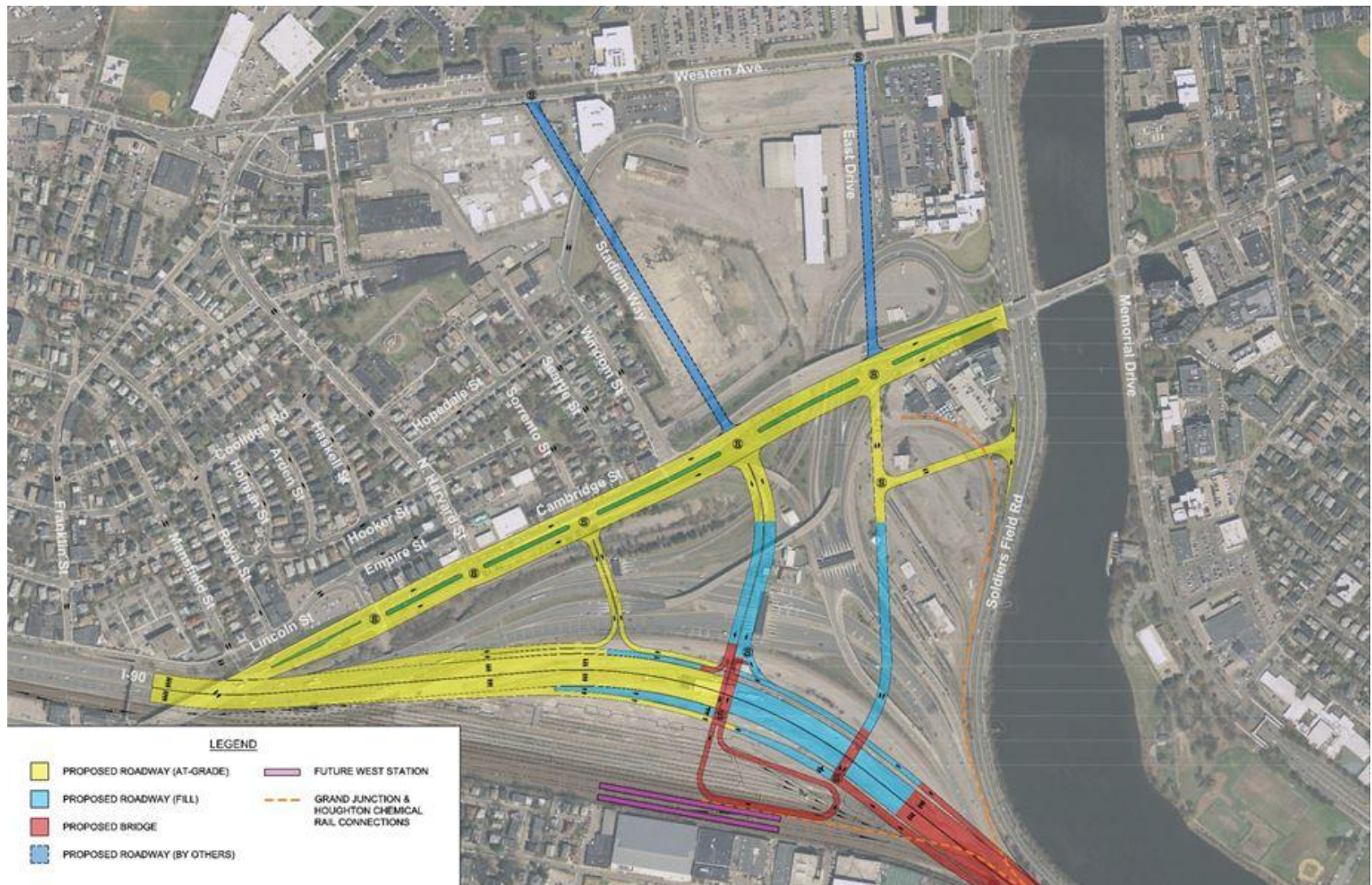
Conceptual Ideas Eliminated

- Depressing I-90
- Elevating Rail
- Reduced Interstate Standards
- Alternative Interchange Configurations

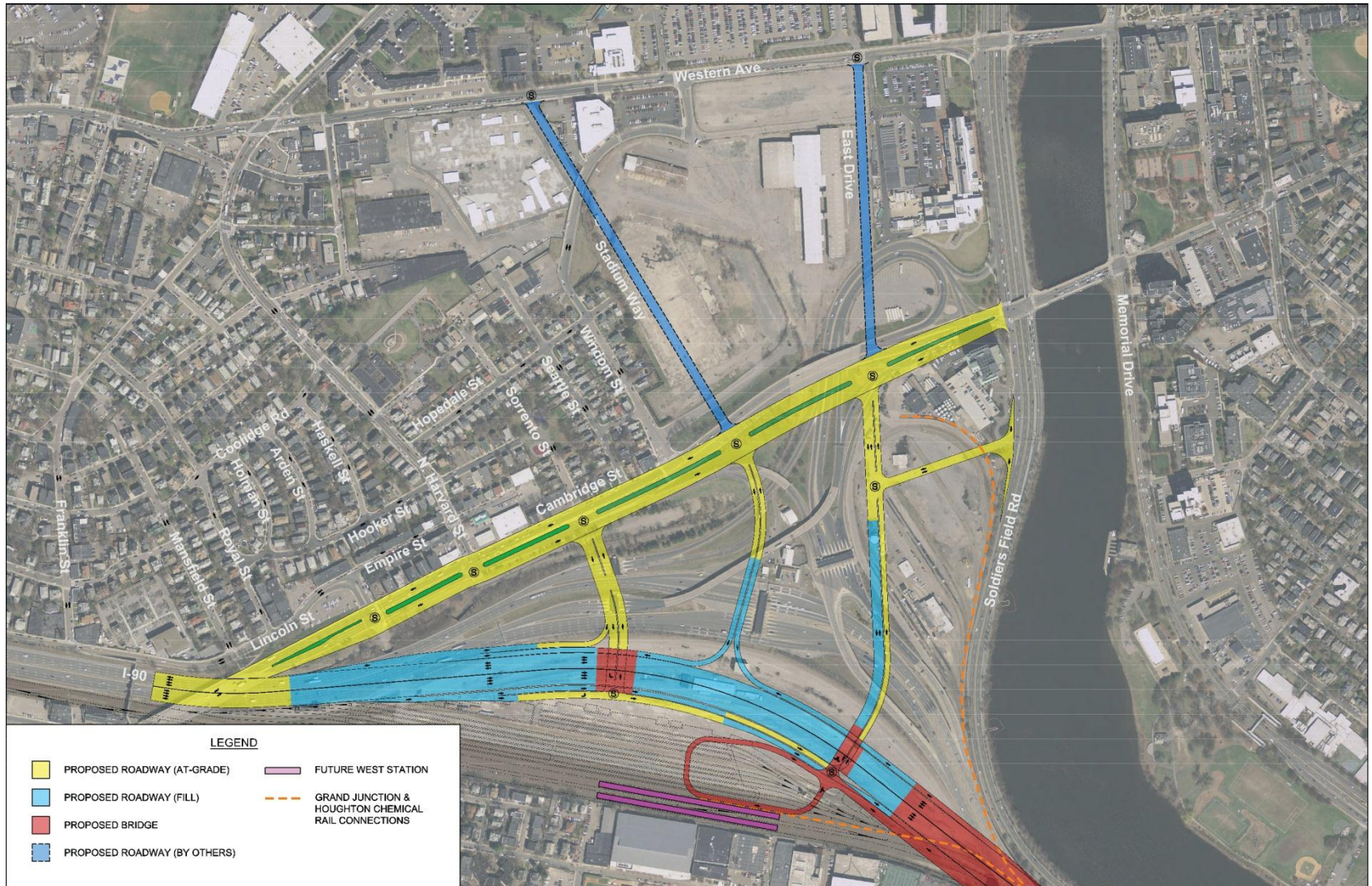
Eliminate Suburban Interchange Concepts



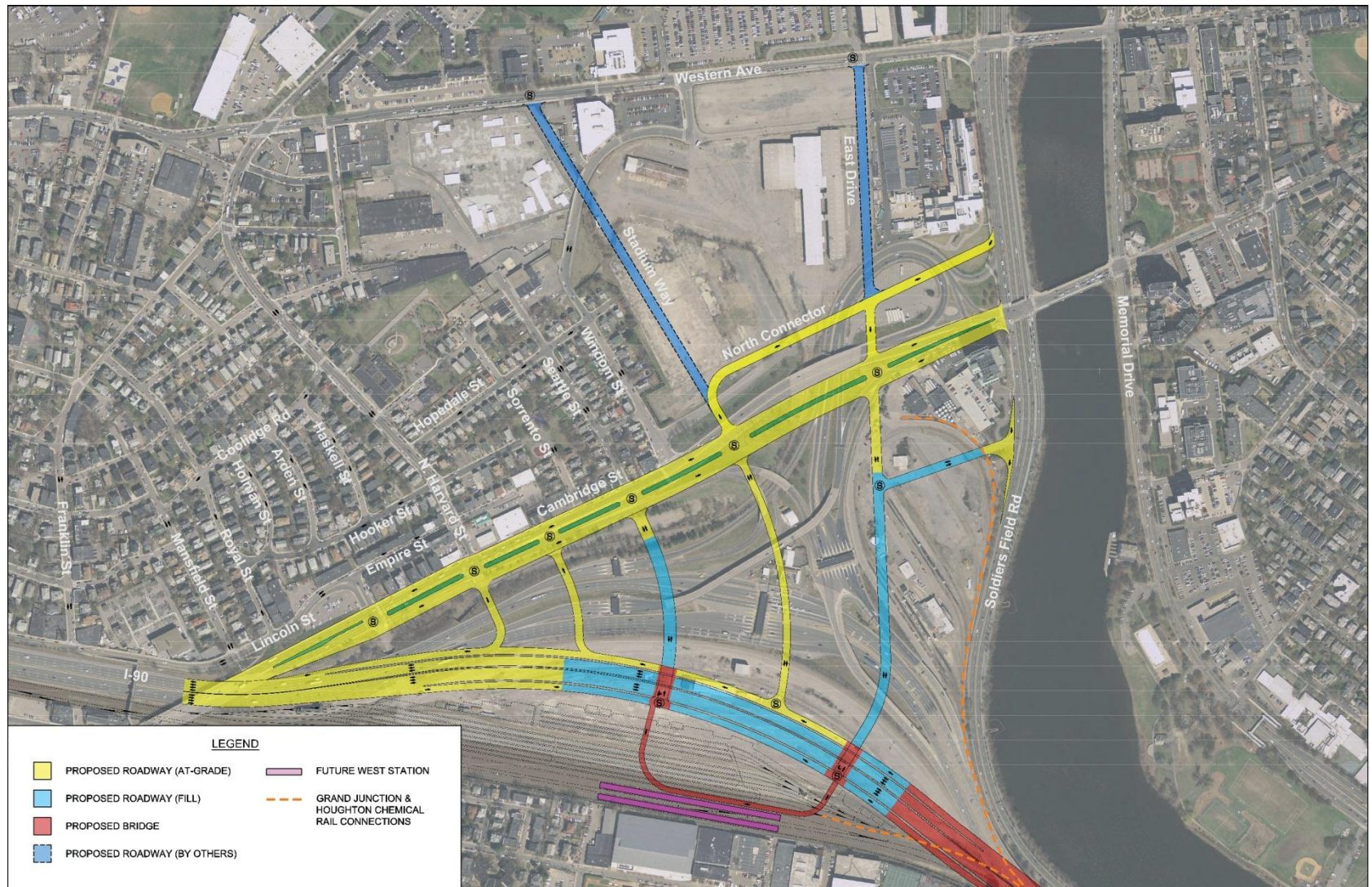
Urban Interchange Concept - Option 3G



Urban Interchange Concept - Option 3H



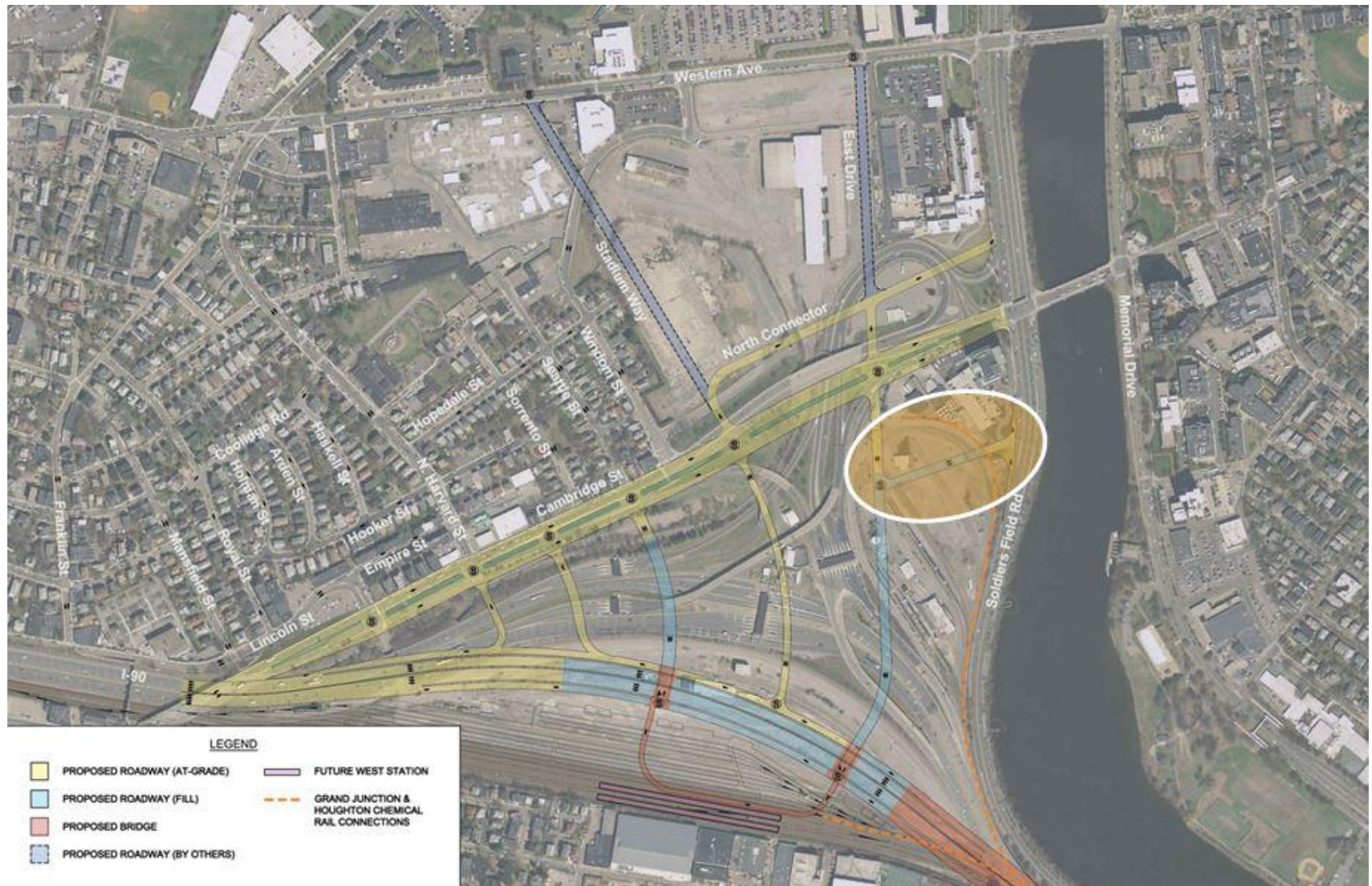
Urban Interchange Concept - Option 3I



Urban Interchange Concept - Option 3 Connectivity to Cambridge Street



Urban Interchange Concept - Option 3 New Connection to Soldiers Field Rd



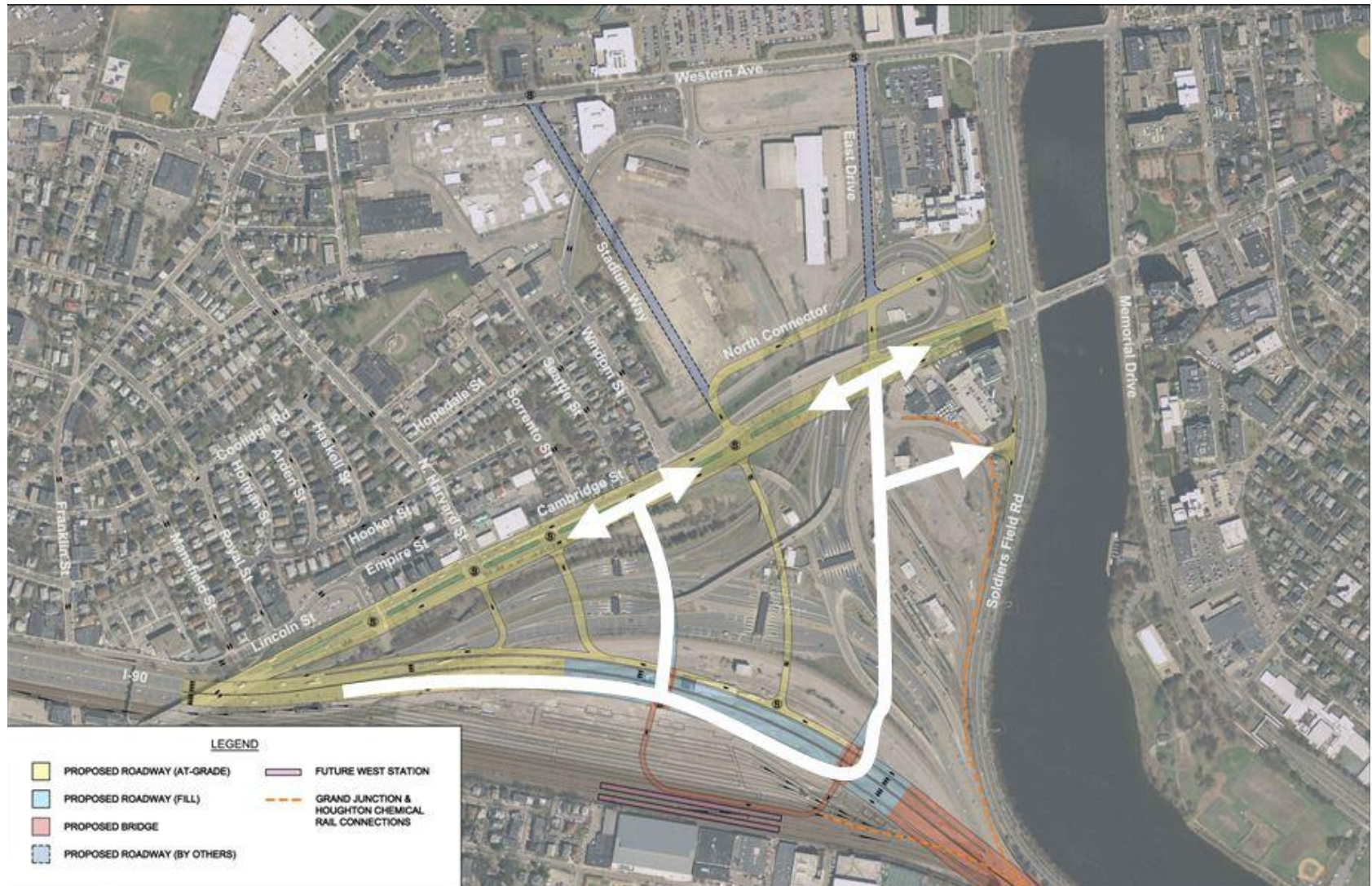
Urban Interchange Concept - Option 3 Grade Separation of EB & WB Ramps



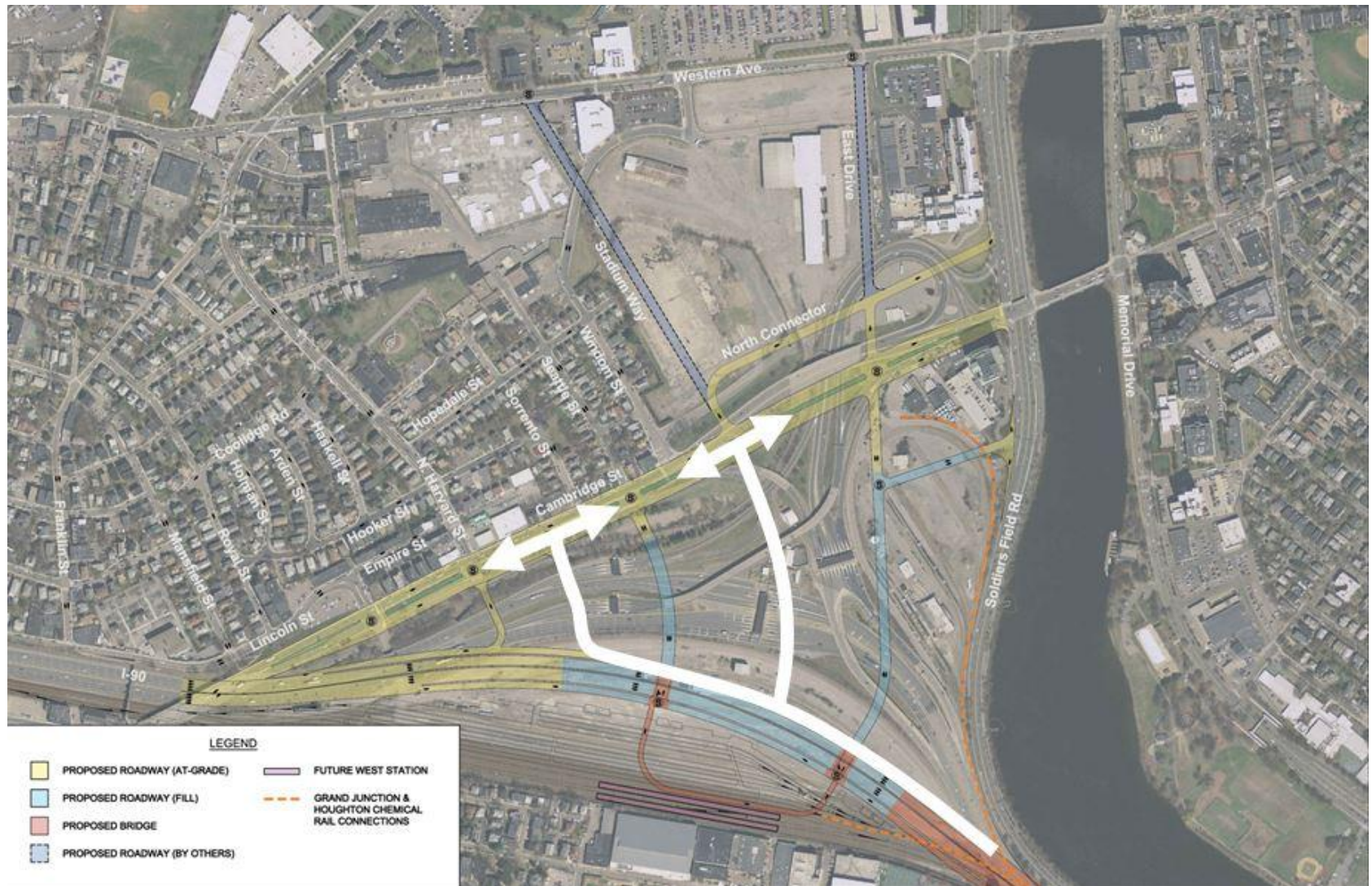
Urban Interchange Concept - Option 3 Vehicular Connectivity to West Station



Urban Interchange Concept - Option 3I I-90 Access EB Off-Ramp



Urban Interchange Concept - Option 3I I-90 Access WB Off-Ramp



Urban Interchange Concept - Option 3I I-90 Access EB On-Ramp



Urban Interchange Concept - Option 3F-1: I-90 Access WB On-Ramp



Urban Interchange Concept - Option 3 Rebuild Existing Pedestrian Bridge



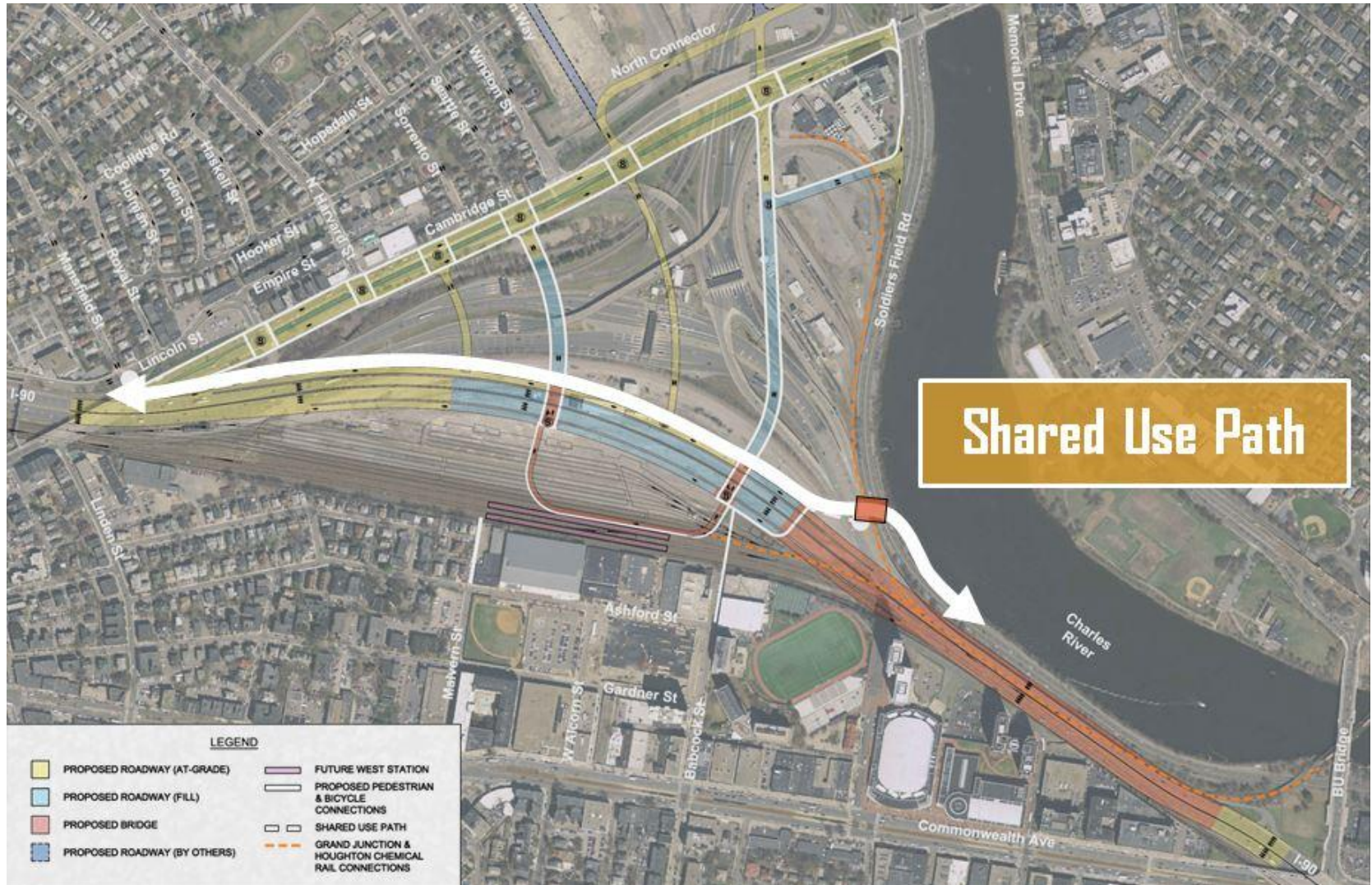
Urban Interchange Concept - Option 3I

Pedestrian Connections to West Station & Comm Ave



Urban Interchange Concept - Option 3I

Bicycle Facilities - 1

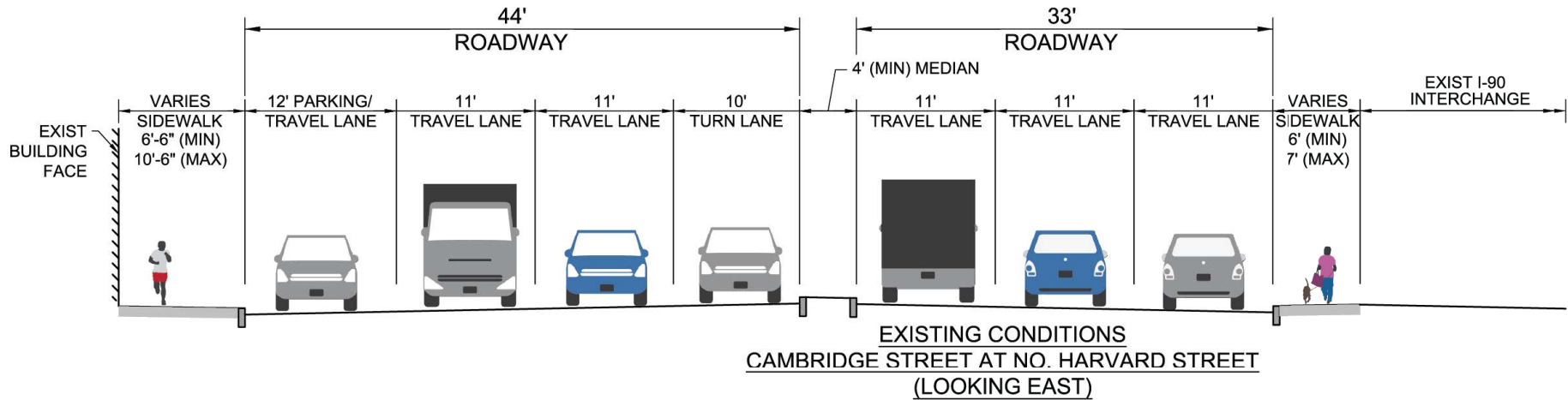


Urban Interchange Concept - Option 3

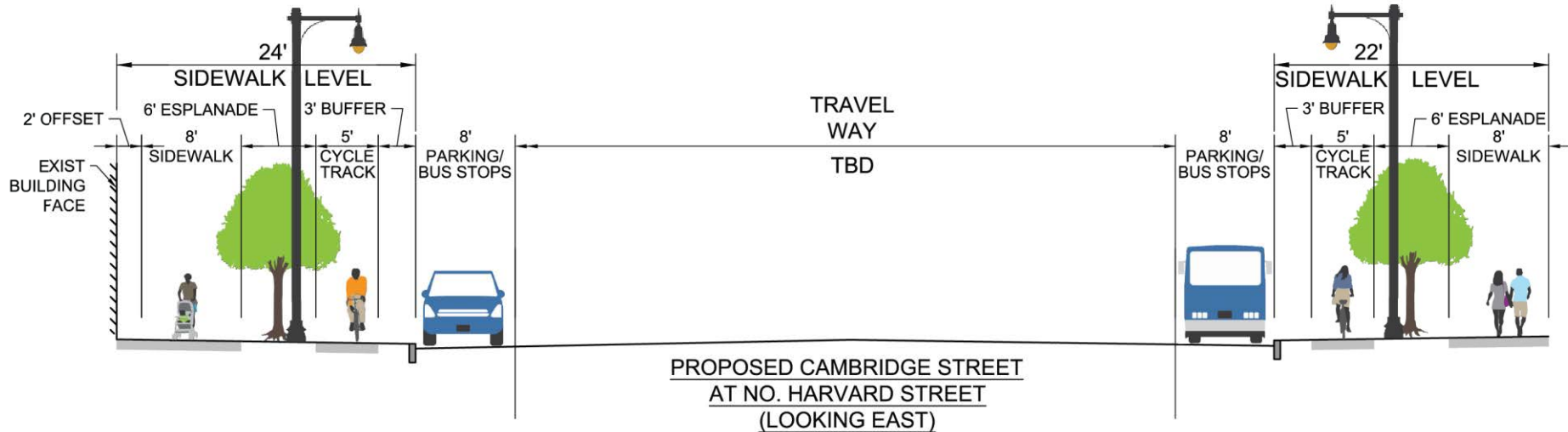
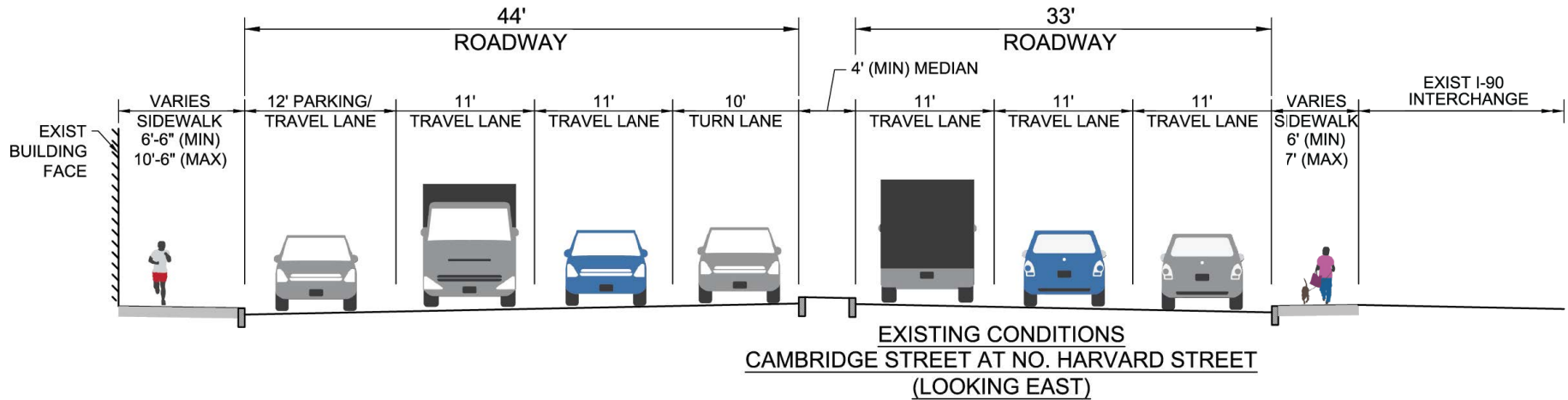
Bicycle Facilities - 2



Existing Cambridge Street Cross Section - 1



Existing Cambridge Street Cross Section - 2



Urban Interchange Concept - Option 3 New Parallel Roadway North of Cambridge St.



Urban Interchange Concept - Option 3 Parallel Road South of Cambridge St

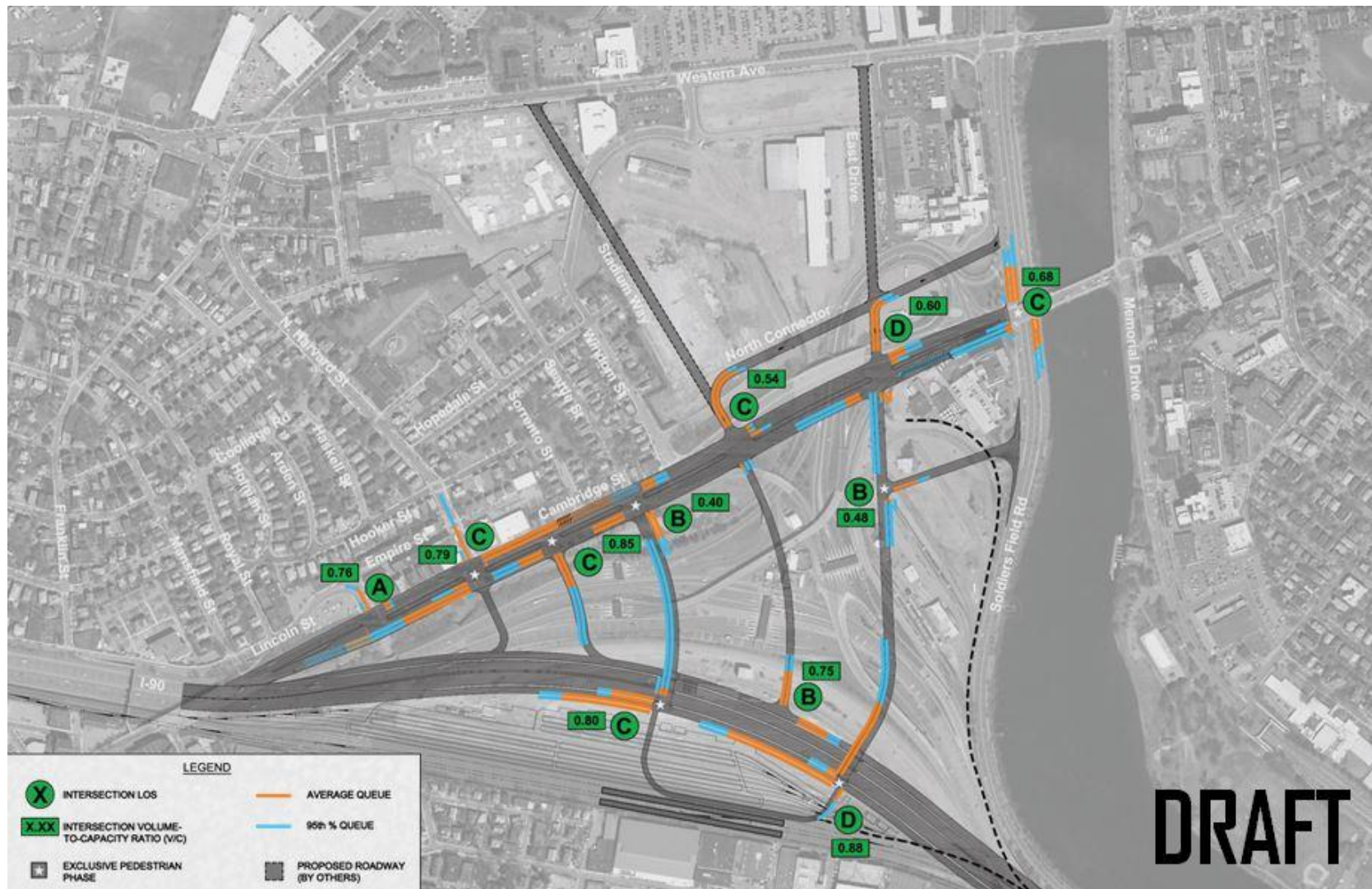


Urban Interchange Concept - Option 3

Parallel Roadway Bike/Pedestrian Connectivity

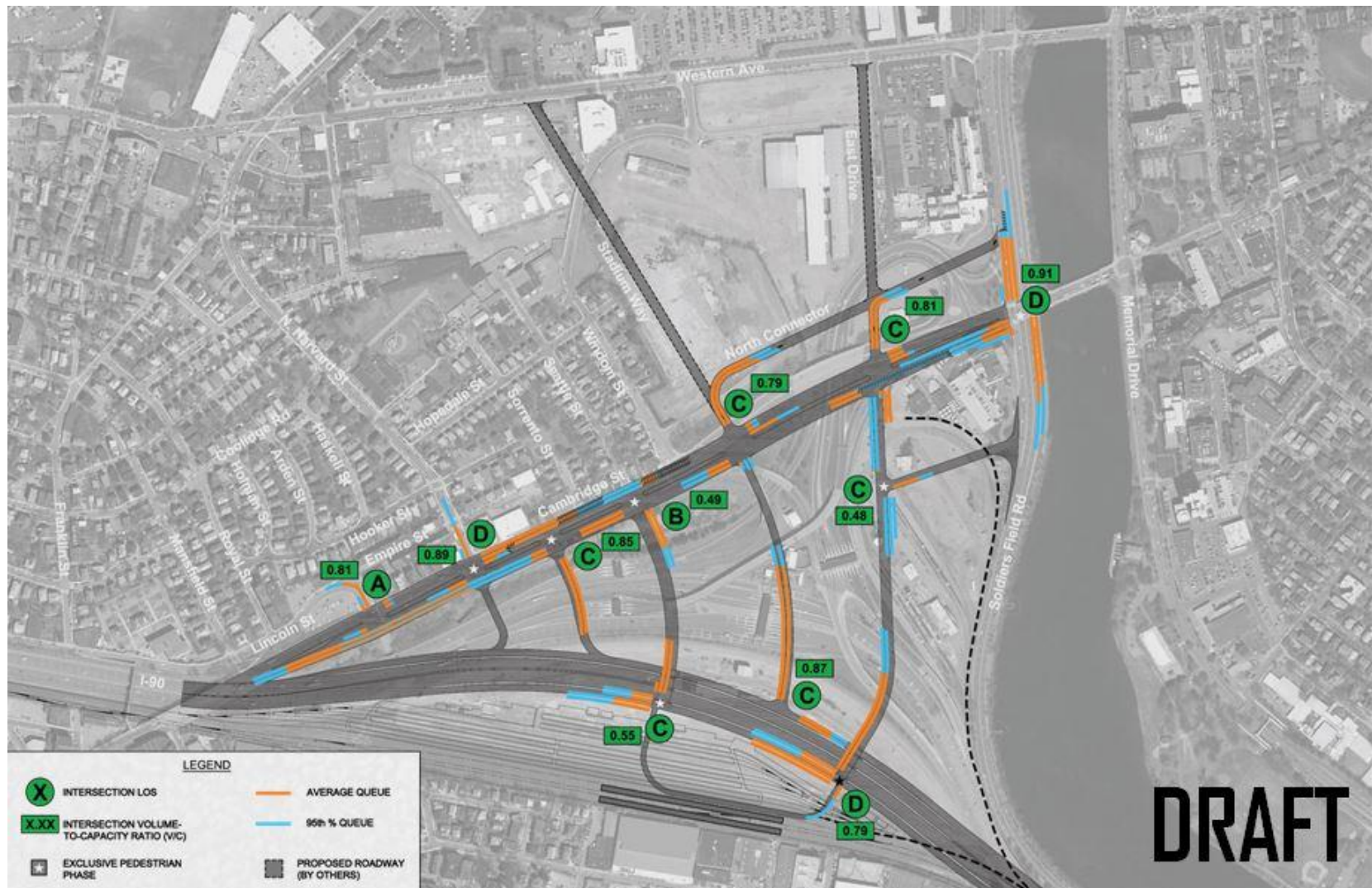


Preliminary Traffic Analysis Results – AM Peak



Urban Interchange Concept - Option 3I

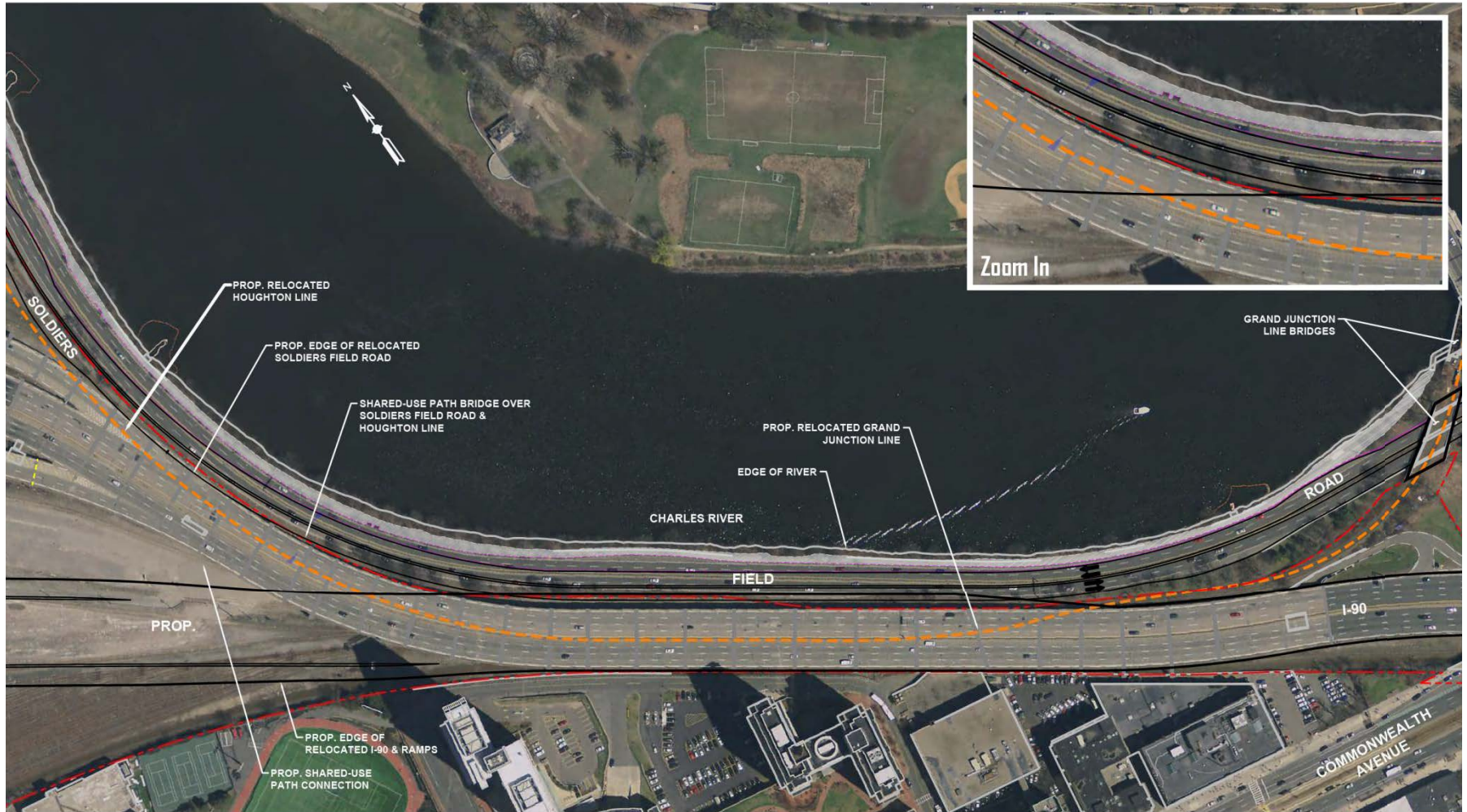
Preliminary Traffic Analysis Results – PM Peak



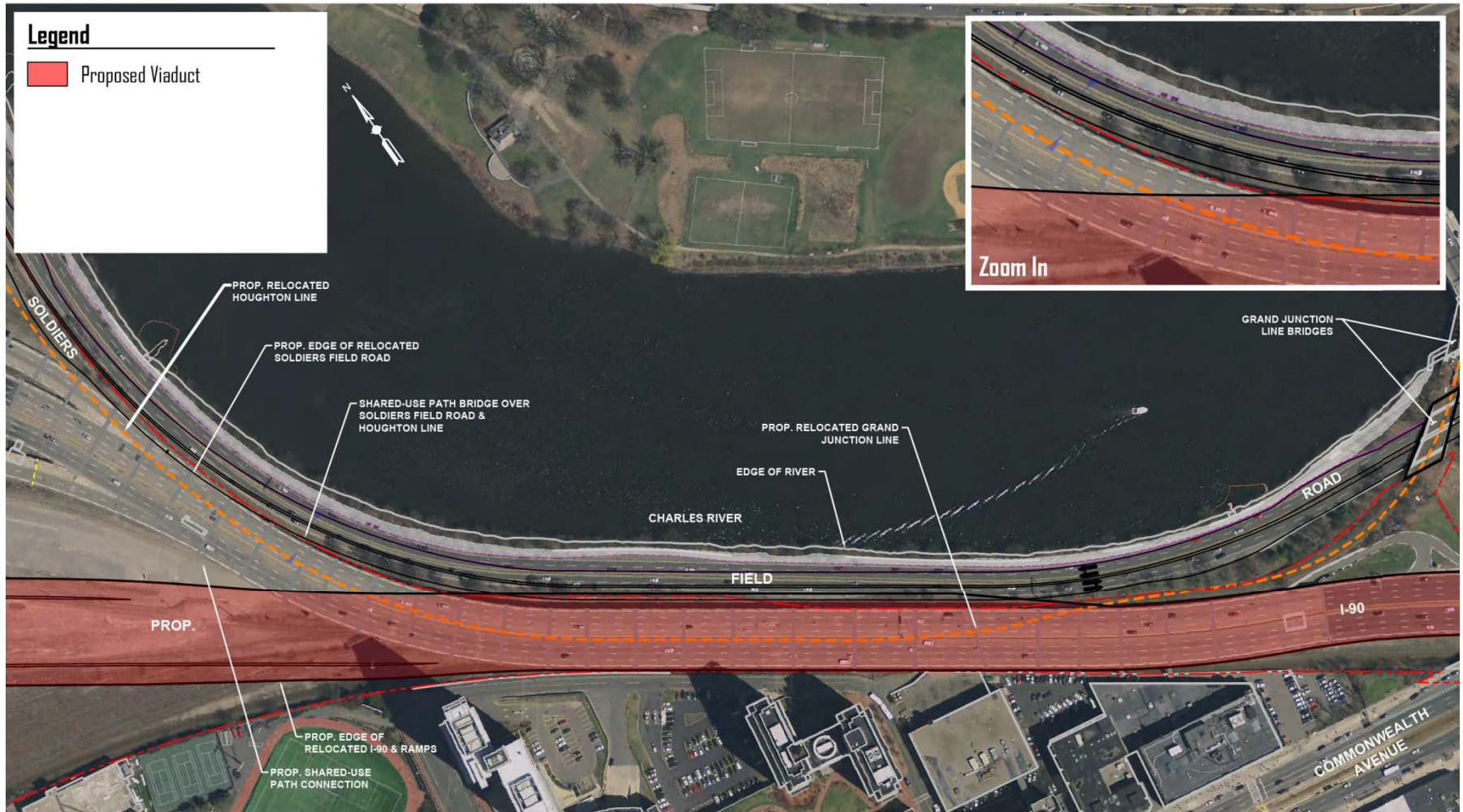
Relocate Soldiers Field Road (SFR)

- Early Concept Development Underway
- Goal is to Expand Useable Parkland Adjacent to River
- Provide space for a Pedestrian Bridge over SFR
- Grand Junction Rail Alignment/Profile Constraints
- Existing MWRA Sewer Line Constraint
- Potential Historic Impacts Section 106/Parkland
Impacts Section 4(f)
- Coordination with DCR

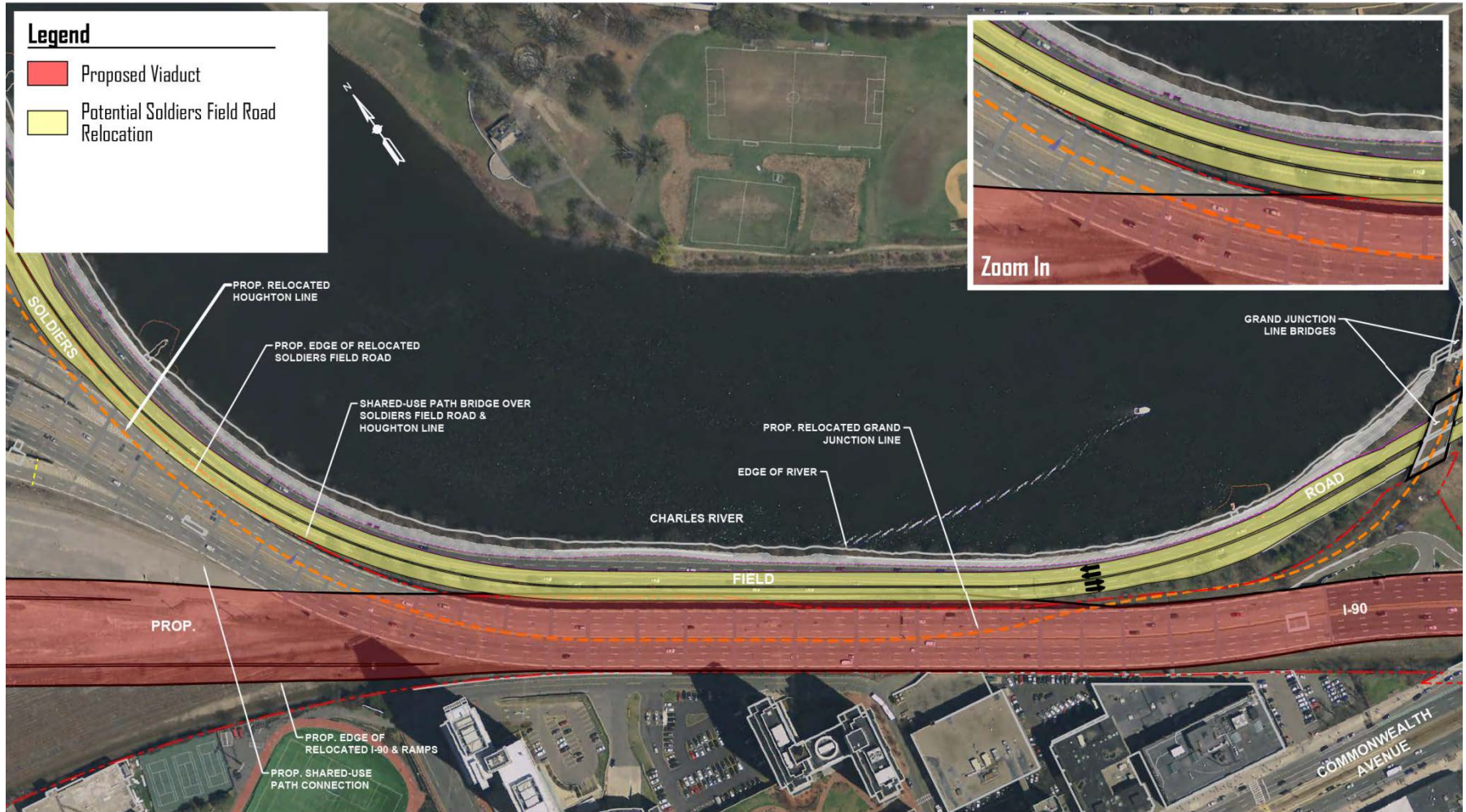
Soldiers Field Road – Plan View



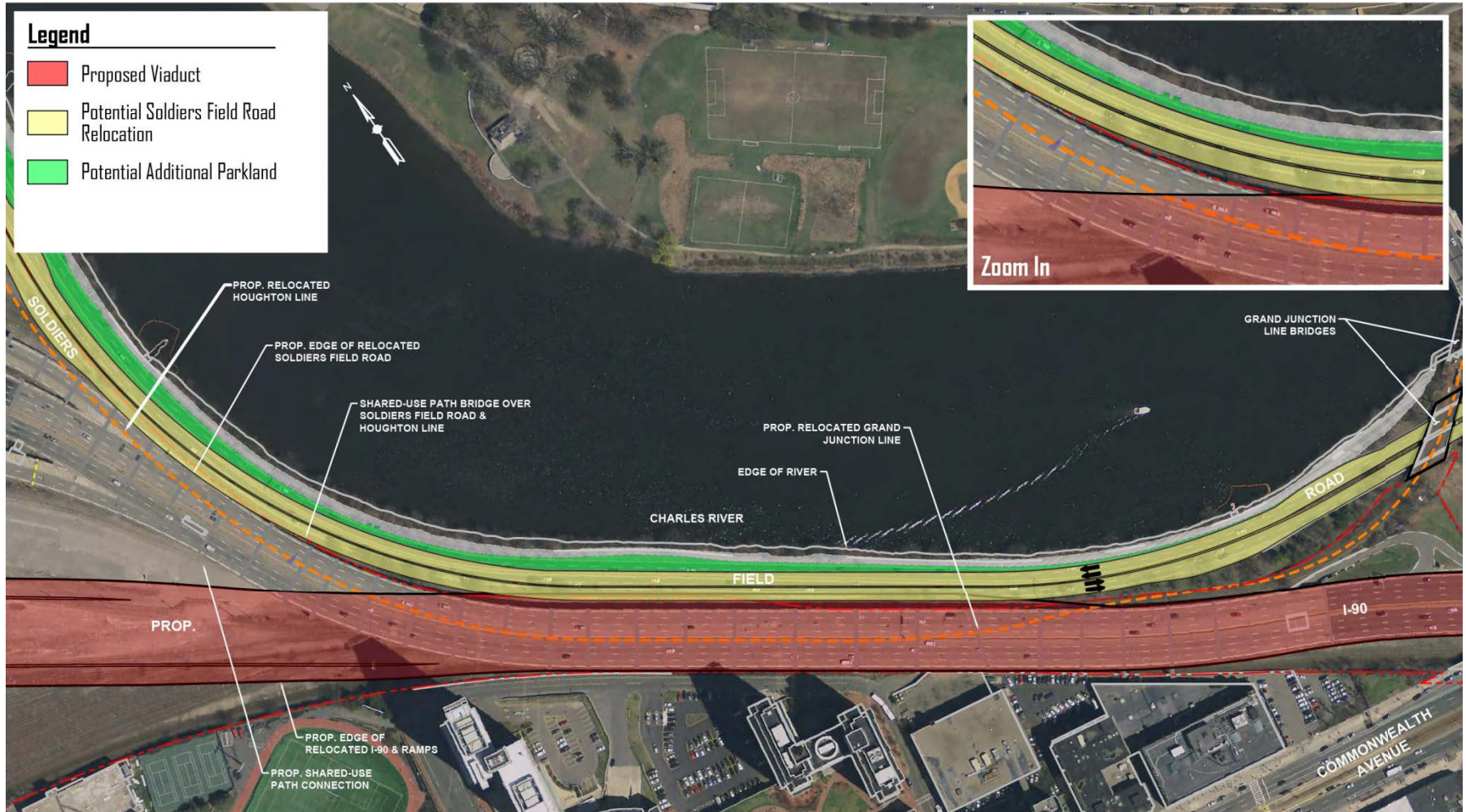
Soldiers Field Road – Plan View 1



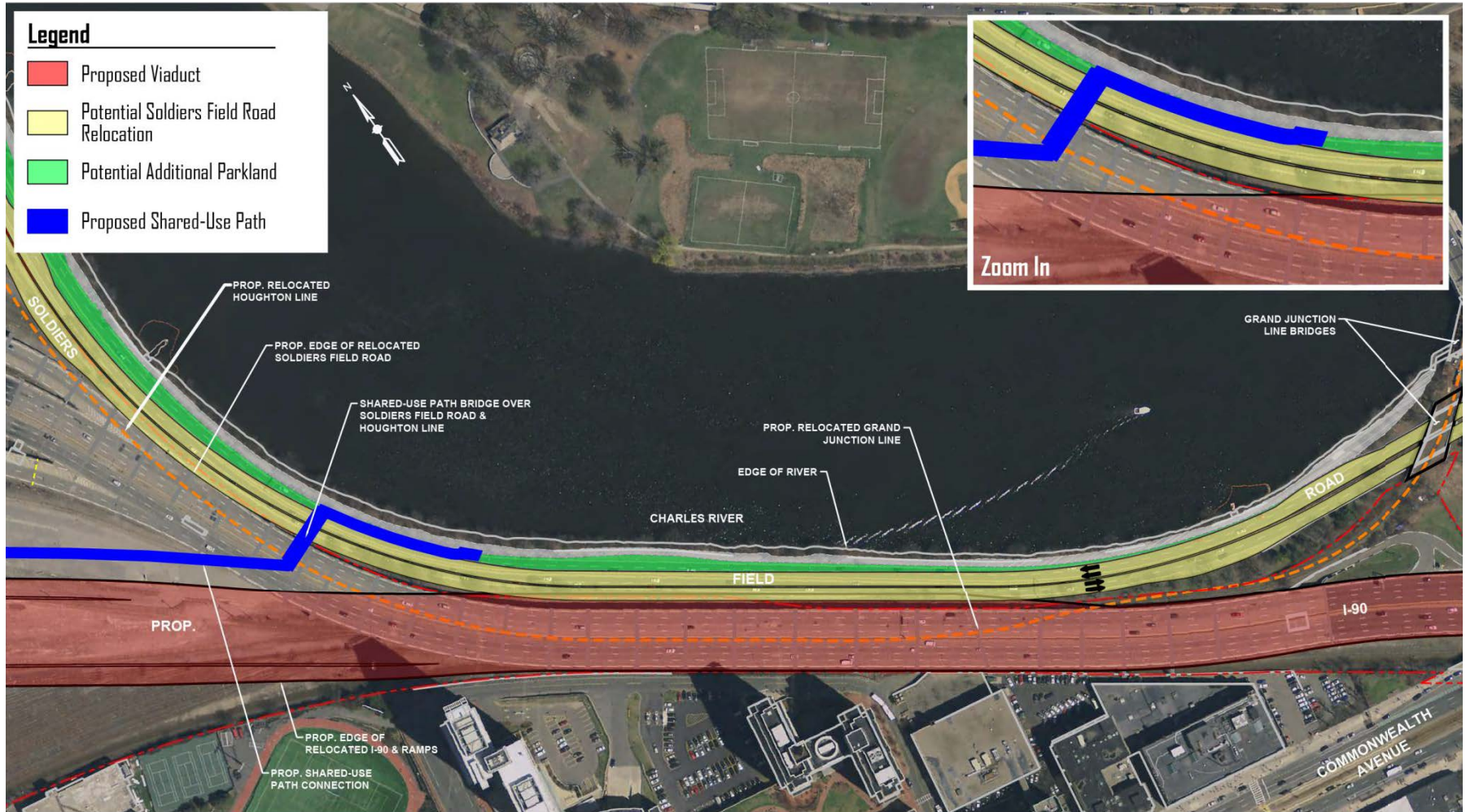
Soldiers Field Road – Plan View 2



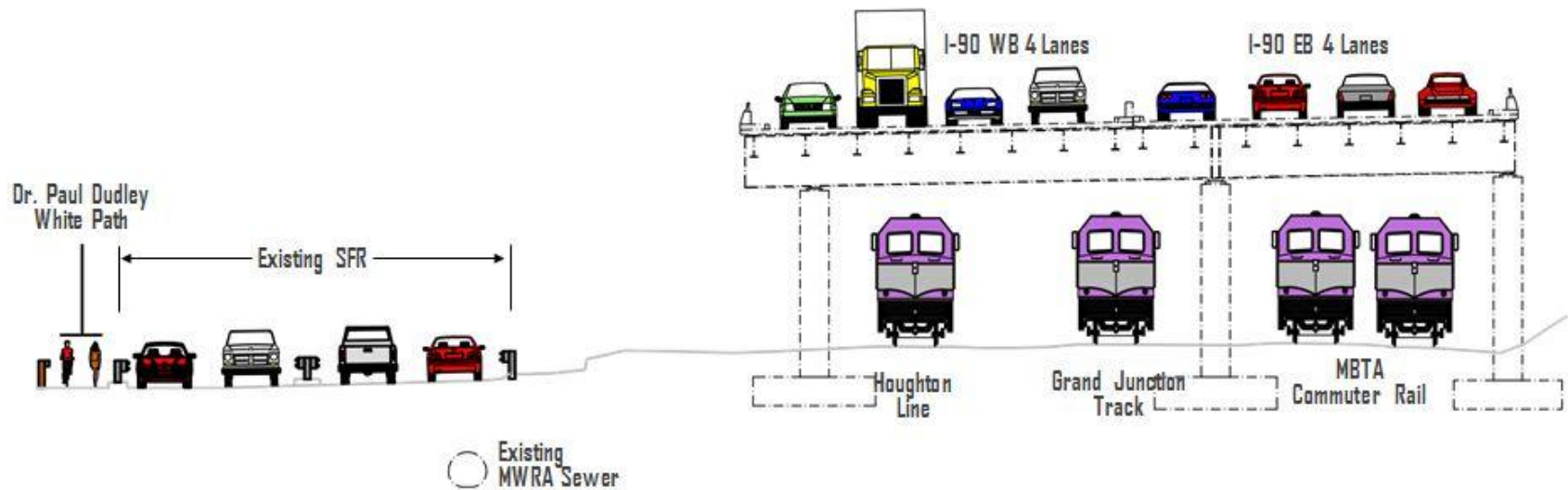
Soldiers Field Road – Plan View 3



Soldiers Field Road – Plan View 4



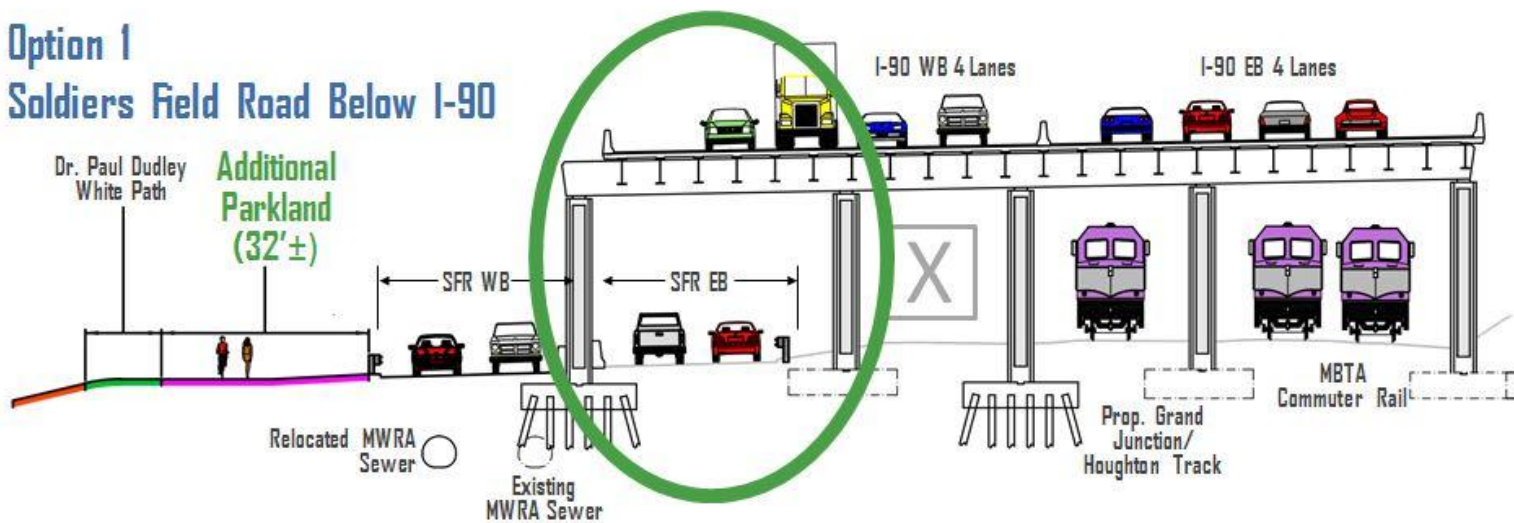
Soldiers Field Road - Existing Section Near Buick St.



Soldiers Field Road – Alternative Sections

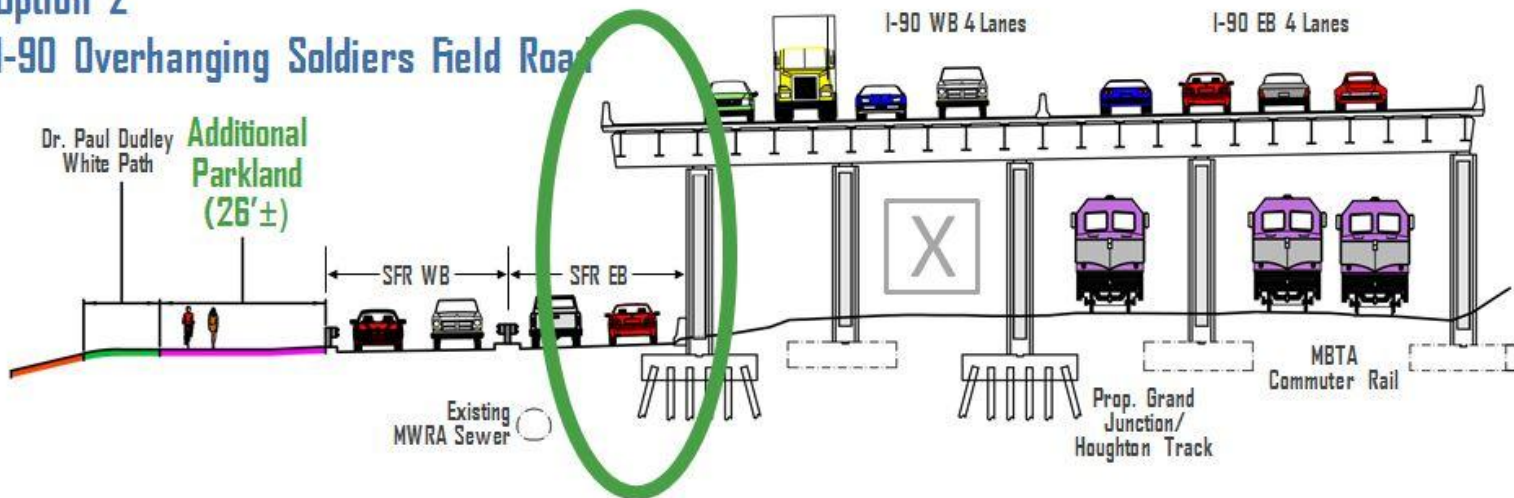
Option 1

Soldiers Field Road Below I-90

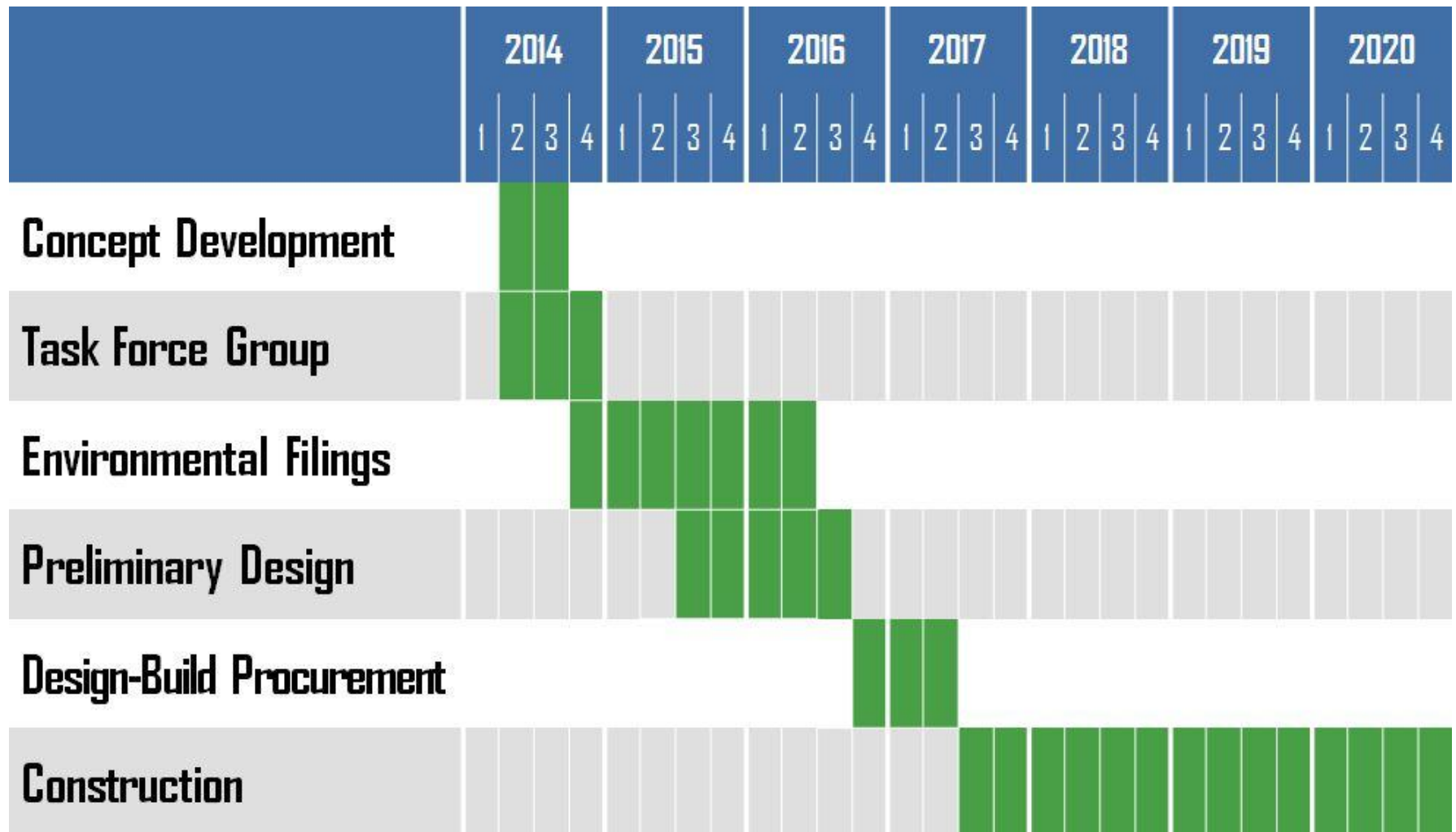


Option 2

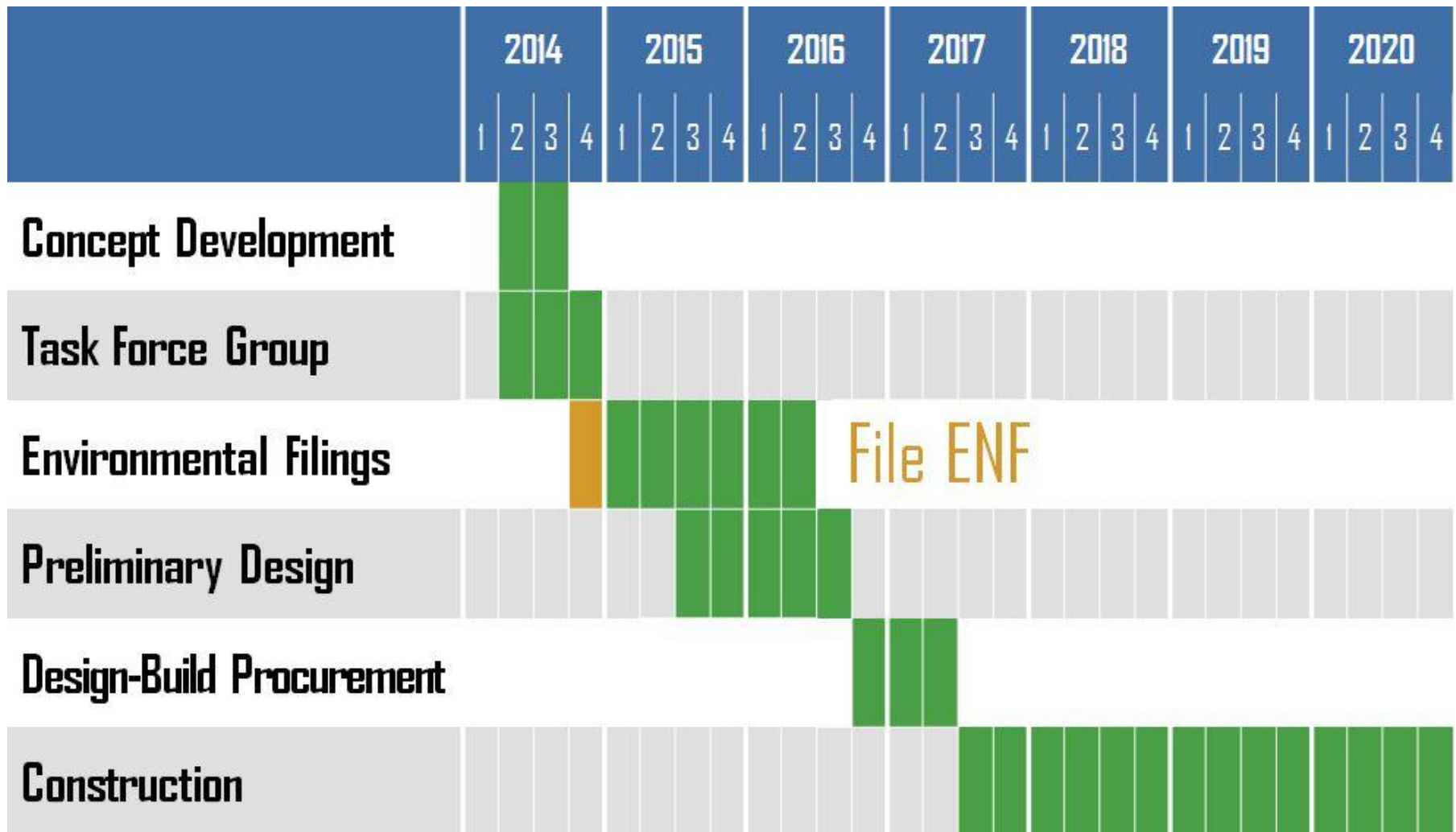
I-90 Overhanging Soldiers Field Road



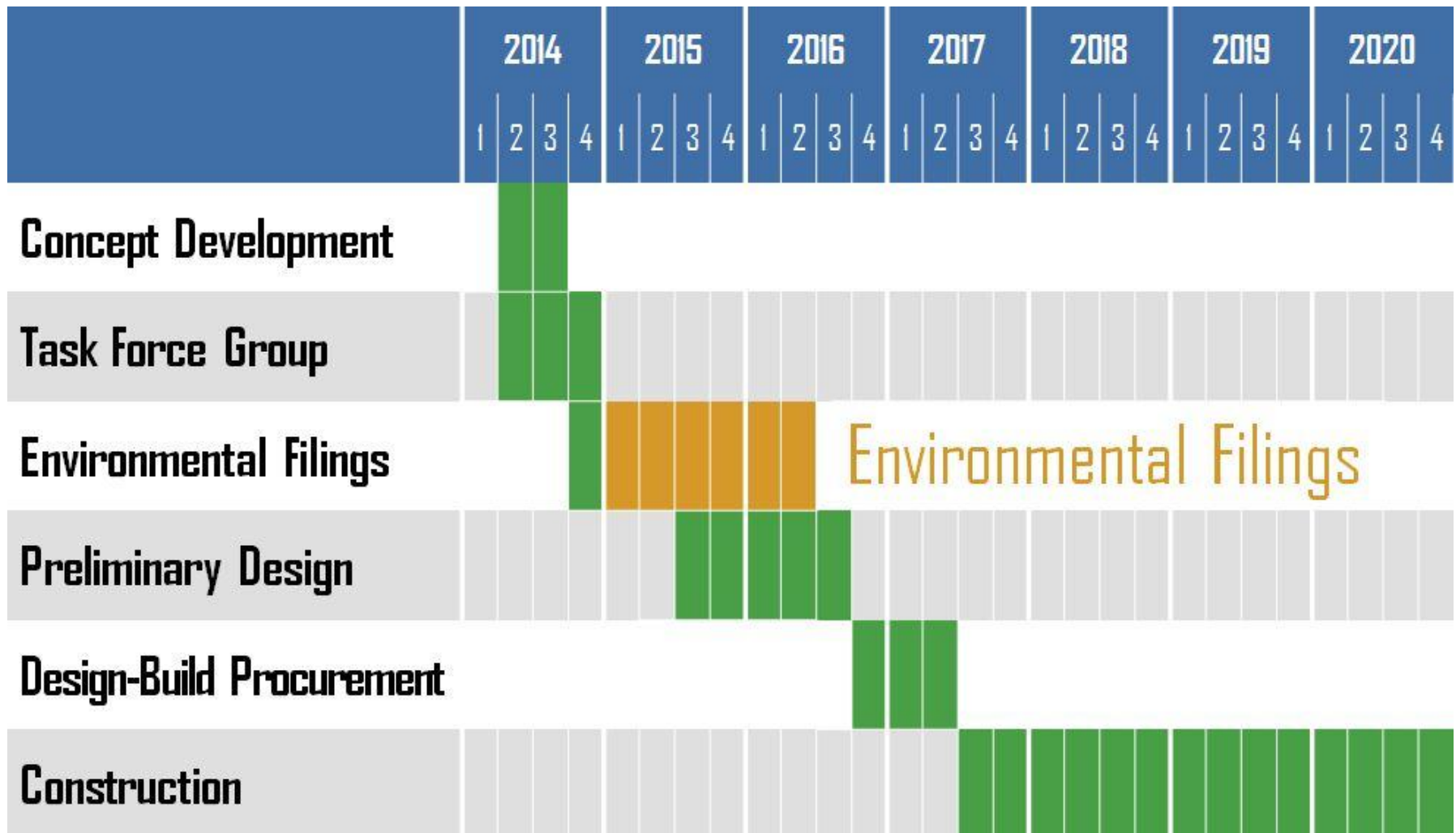
Project Timeline



Project Timeline 1



Project Timeline 2



Next Steps

- Review Detailed Finalist Alternatives with Task Force
- File MEPA Environmental Notification Form (ENF)
- Proceed Design Development and National Environmental Policy Act (NEPA)/MEPA Review
- NEPA Environmental Assessment (EA)
- MEPA Draft and Final Environmental Impact Reports
- Completion of the Environmental Review and Design Process
- Construction

Continued Public Input Throughout

Public Participation

- Website/Email Responses
- MEPA Review Process
- Quarterly Public Meetings (Some in Metrowest if applicable)
- Briefings/Q+A with defined groups, merchants, neighborhood, etc.

Question & Comments

Patricia Leavenworth, PE, MassDOT, Chief Engineer

10 Park Plaza, Boston, MA 02116

Attn: Bridge Project Management - Project File No: 606475

Nathaniel Curtis, Howard Stein Hudson, Public
Involvement

(617) 482 – 7080 ext. 236

ncabral-curtis@hshassoc.com

