



I-90 ALLSTON INTERCHANGE

A MULTIMODAL TRANSPORTATION PROJECT

TASK FORCE MEETING #6

AUGUST, 13 2014 – FIORENTINO COMMUNITY CENTER, ALLSTON

Cambridge Street Update

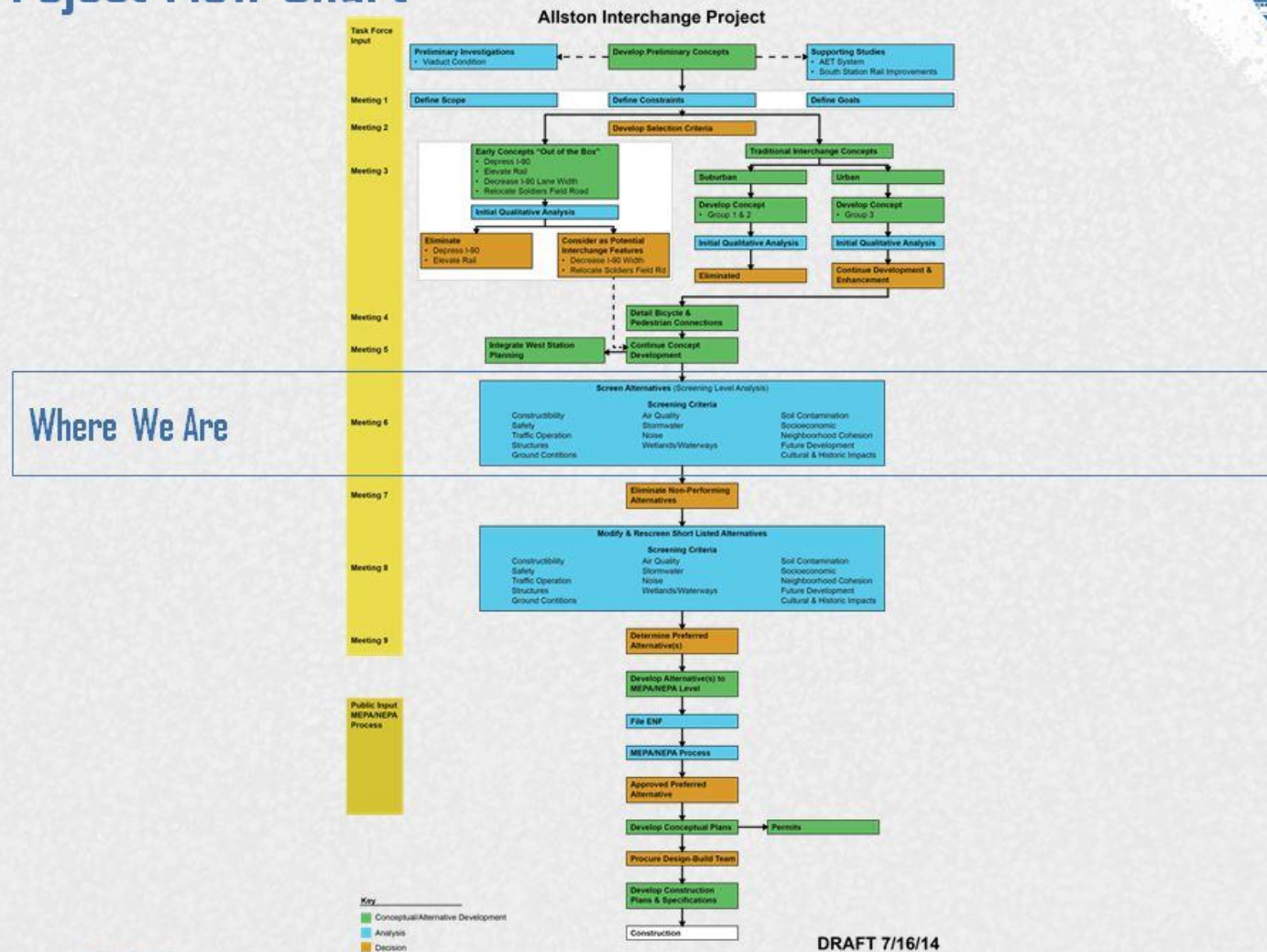




Task Force Administration

- Minutes
- Project Flow Chart/Vision and Goals
- Update on Meetings with Government Entities

Project Flow Chart



DRAFT 7/16/14



Statement of Purpose

- Convened by MassDOT to provide stakeholder input on the broad range of issues affecting interchange design
- Input will affect MassDOT's decisions regarding the development of implementable alternatives, selection of a preferred alternative, and the details of design

MassDOT Priorities



Improve Safety, Access & Connections for All Modes

Interchange

- Replace Viaduct
- Realign I-90
- Implement AET
- Context Sensitive Design

Cambridge St

- Redesign C-bridge St
- Revitalize C-bridge St
- Reconfigure Local Roadway Connections
- Context Sensitive Design

Transit

- Support S. Station Expansion, C-Rail, DMU, etc.
- Context Sensitive Design

Neighborhood

- Avoid/minimize ROW/property displacements
- Minimize local impacts during construction
- Context Sensitive Design

The Bottom Line

Use available financial resources within timeframe allotted

Taskforce Priorities



Improve Safety, Access & Connections for All Modes

Interchange

- Realign I-90
- Minimize interchange presence
- Safe connections to C-bridge St.
- Increase permeability across interchange
- Context Sensitive Design

Cambridge St

- Safe connections to interchange
- Less interchange impact to C-bridge St.
- Reconfigure Local Roadway Connections
- Improve safety
- Context Sensitive Design

Transit

- Connections between C-bridge St. & W. Station
- Context Sensitive Design

Neighborhood

- Minimize local impacts during construction
- Avoid new cut-thru traffic
- Reconnect Allston
- Foster local business
- Context Sensitive Design

The Bottom Line

Improve safety, respect the neighborhood, reconnect Allston to itself & the Charles



Shared Priorities

- ✓ *Improve safety for all modes: walking, cycling, driving, transit*
- ✓ **Realign I-90**
- ✓ **Context sensitive design or:**
 - ✓ **Lessen impact of interchange**
 - ✓ **Avoid inducing cut-through traffic with new configuration**
 - ✓ **Reconnect sections of Allston to each other and the River**
- ✓ **Protect the neighborhood during construction**
- ✓ **A more vibrant Cambridge Street that serves all modes**
- ✓ **Accessibility to transit at future West Station**

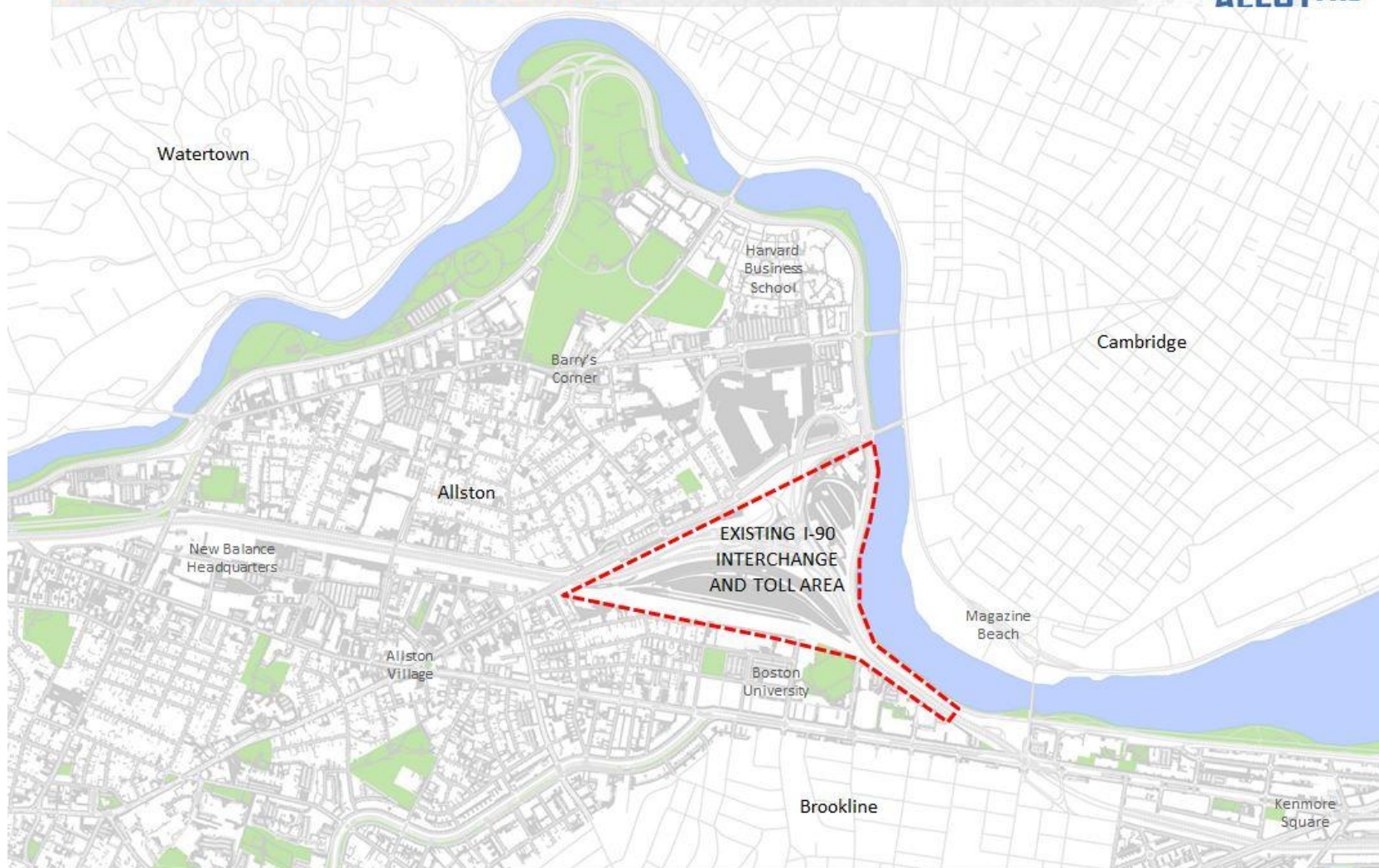
City of Boston Review of Concepts



Allston Interchange Taskforce

13 August 2014

Allston Interchange: Area context



Allston Interchange: Recent planning surrounding the I-90 Interchange



HOLTON STREET PLANNING AREA

Community Wide Plan

Enhancing connectivity between Western Avenue and Lincoln Street; allowing for a range of housing, open space, and mixed-use development within a new street grid

HARVARD UNIVERSITY

Institutional Master Plan and Long-Range Plan

Transforming a vacant industrial and commercial area into vibrant, mixed-use pedestrian-oriented district with significant open space connections to the river

BOSTON UNIVERSITY

Institutional Master Plan

Enhancing the north-south connectivity between the campus, Commonwealth Avenue, and the Charles River

GUEST STREET PLANNING AREA

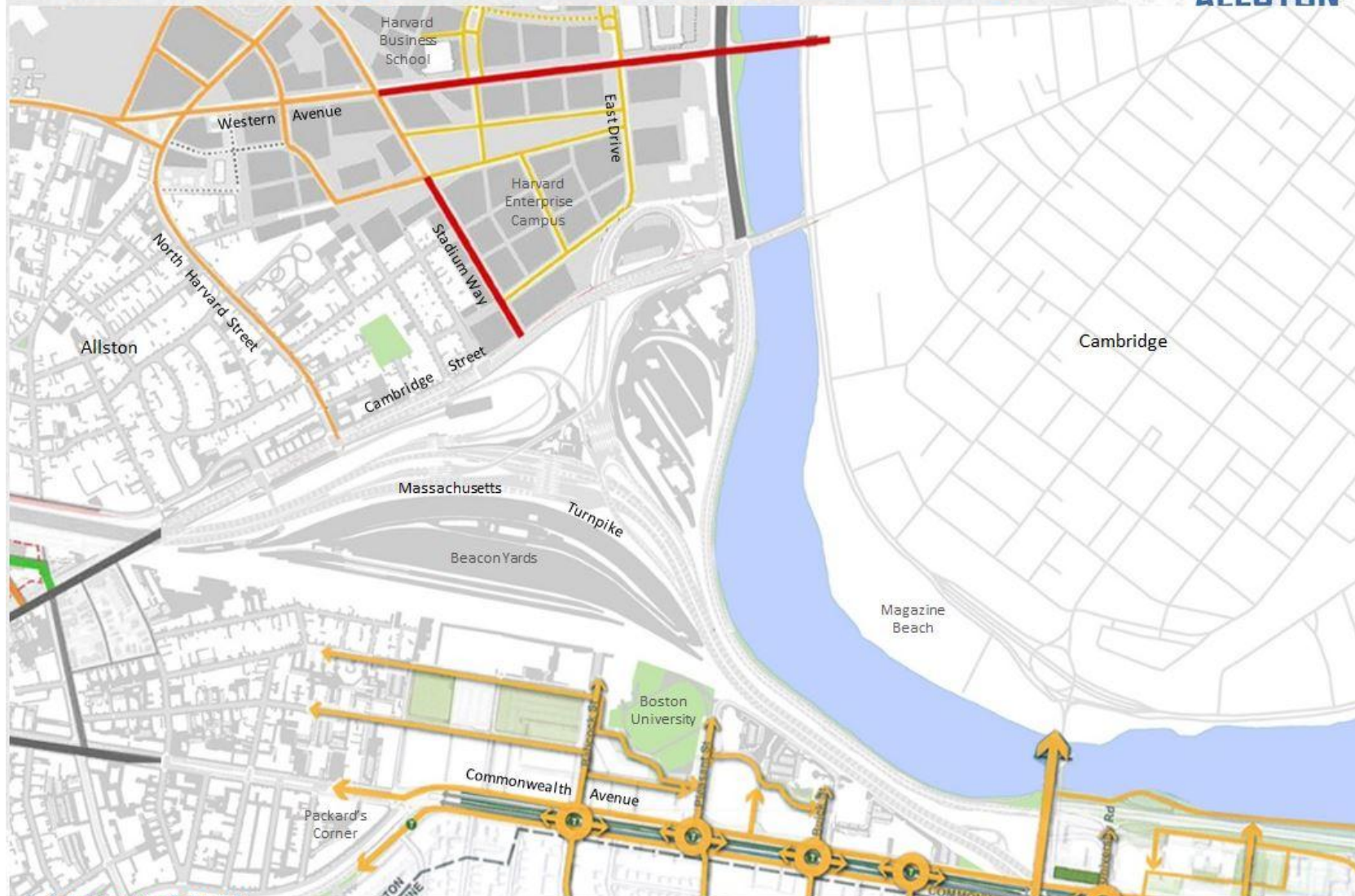
Master Plan and New Balance PDA

Creating a public realm context for underutilized area; establishing new multimodal streets and enhanced frontages; new commuter rail station



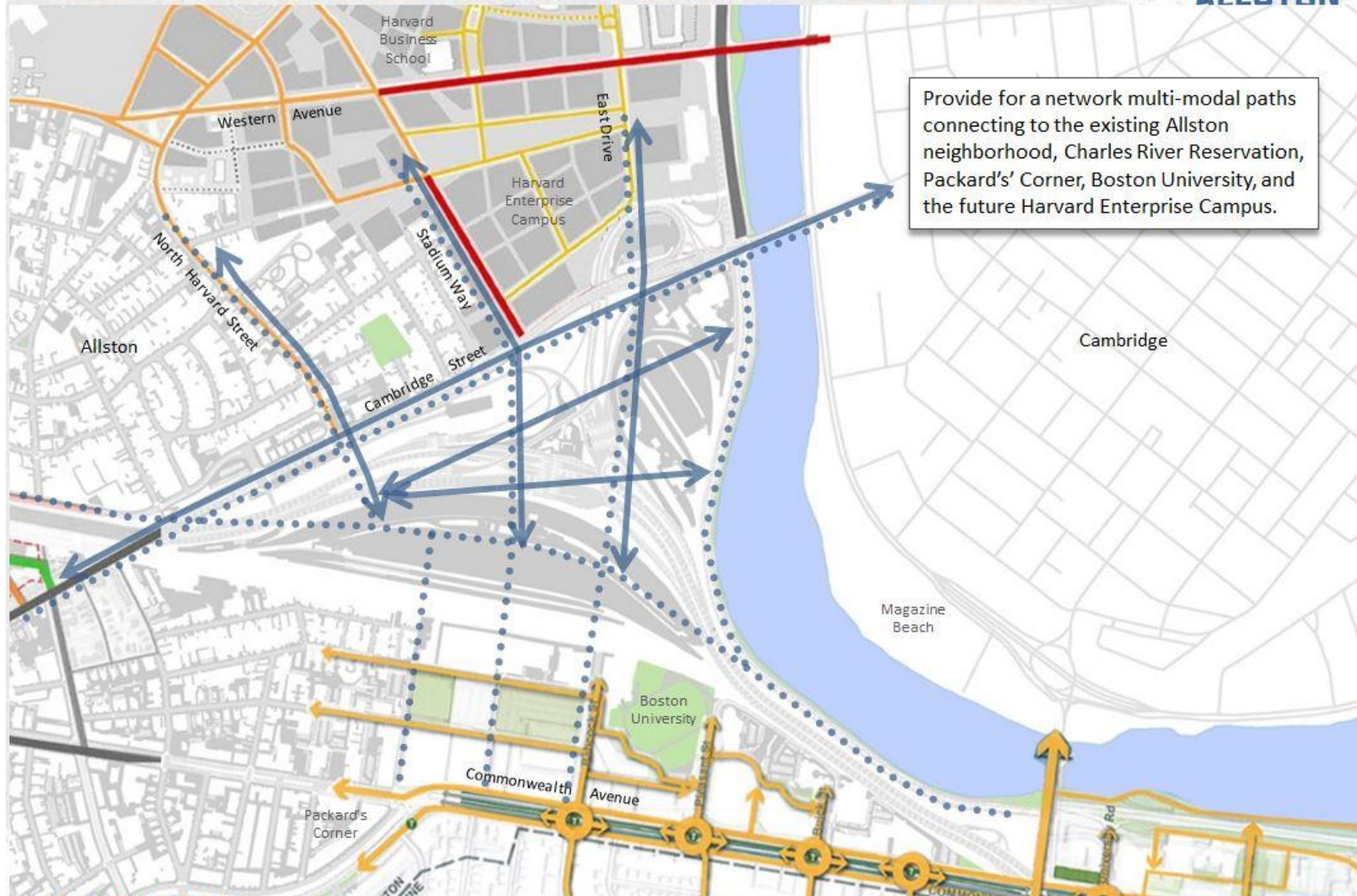
Allston Interchange: Area context (including recent planning)

INTERSTATE 90
ALLSTON



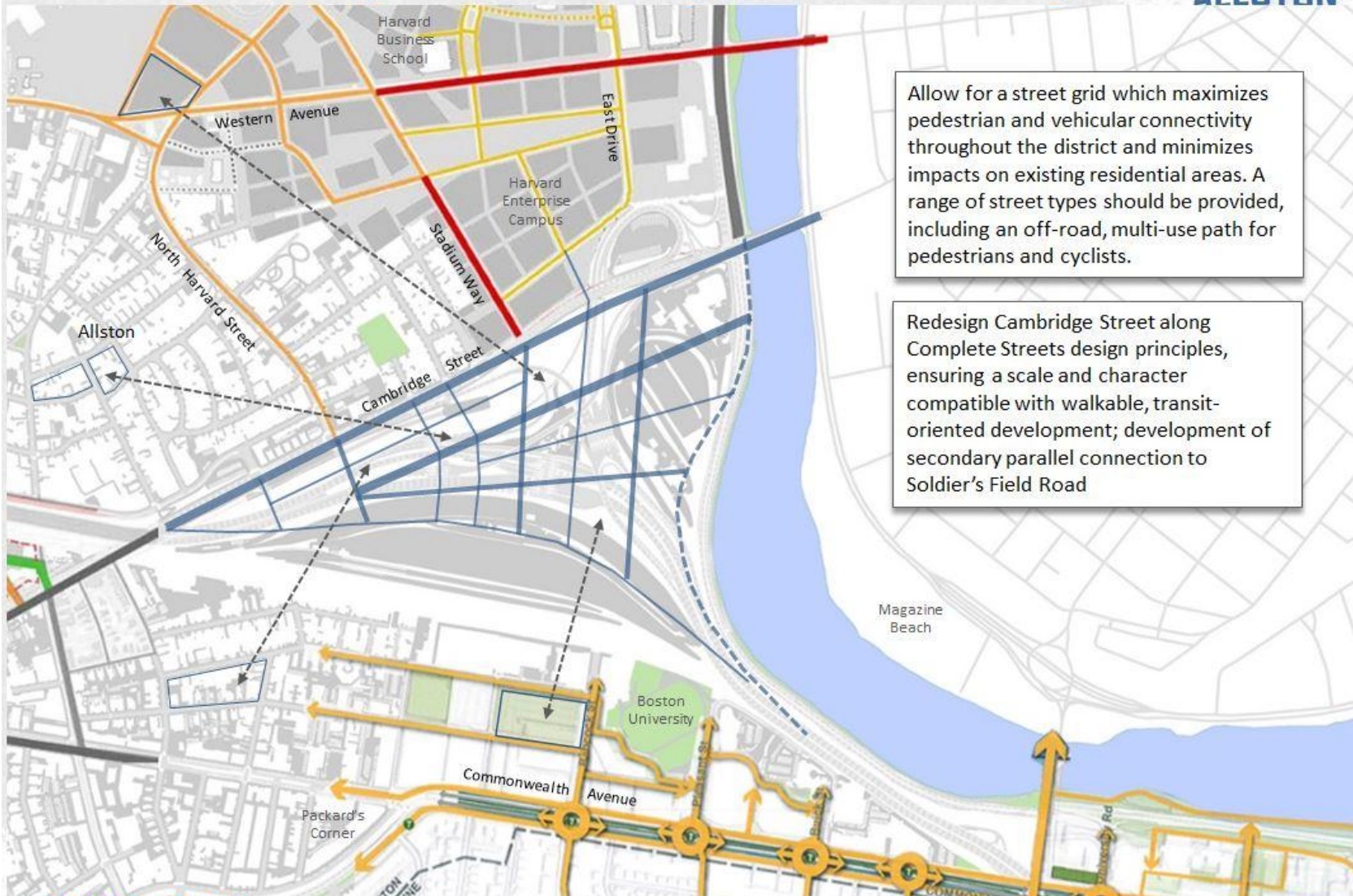
Allston Interchange: Strong connections to surrounding areas

INTERSTATE 90
ALLSTON



Allston Interchange: Traditional street grid/Revitalized Cambridge Street

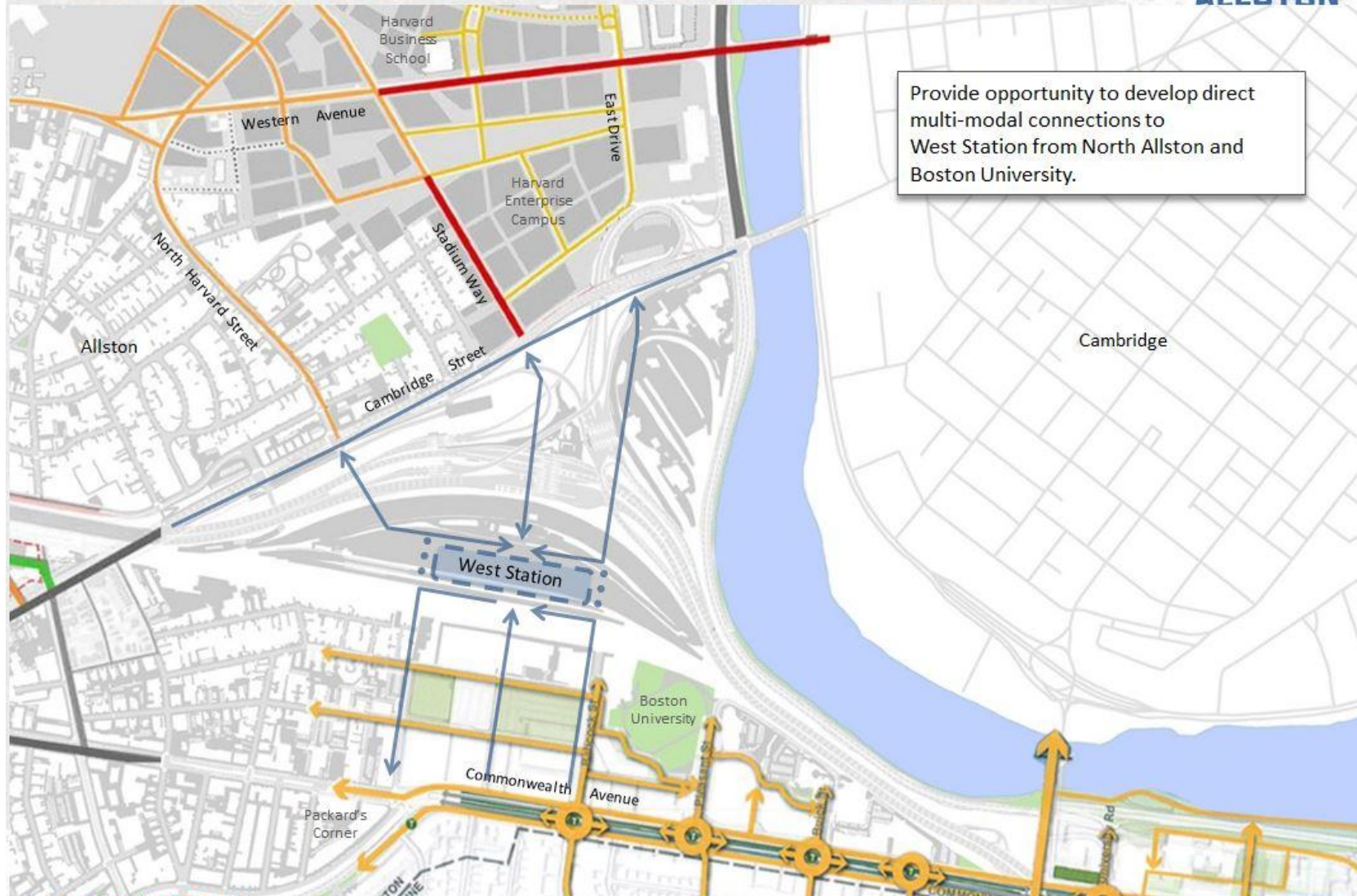
INTERSTATE 90
ALLSTON



Allow for a street grid which maximizes pedestrian and vehicular connectivity throughout the district and minimizes impacts on existing residential areas. A range of street types should be provided, including an off-road, multi-use path for pedestrians and cyclists.

Redesign Cambridge Street along Complete Streets design principles, ensuring a scale and character compatible with walkable, transit-oriented development; development of secondary parallel connection to Soldier's Field Road

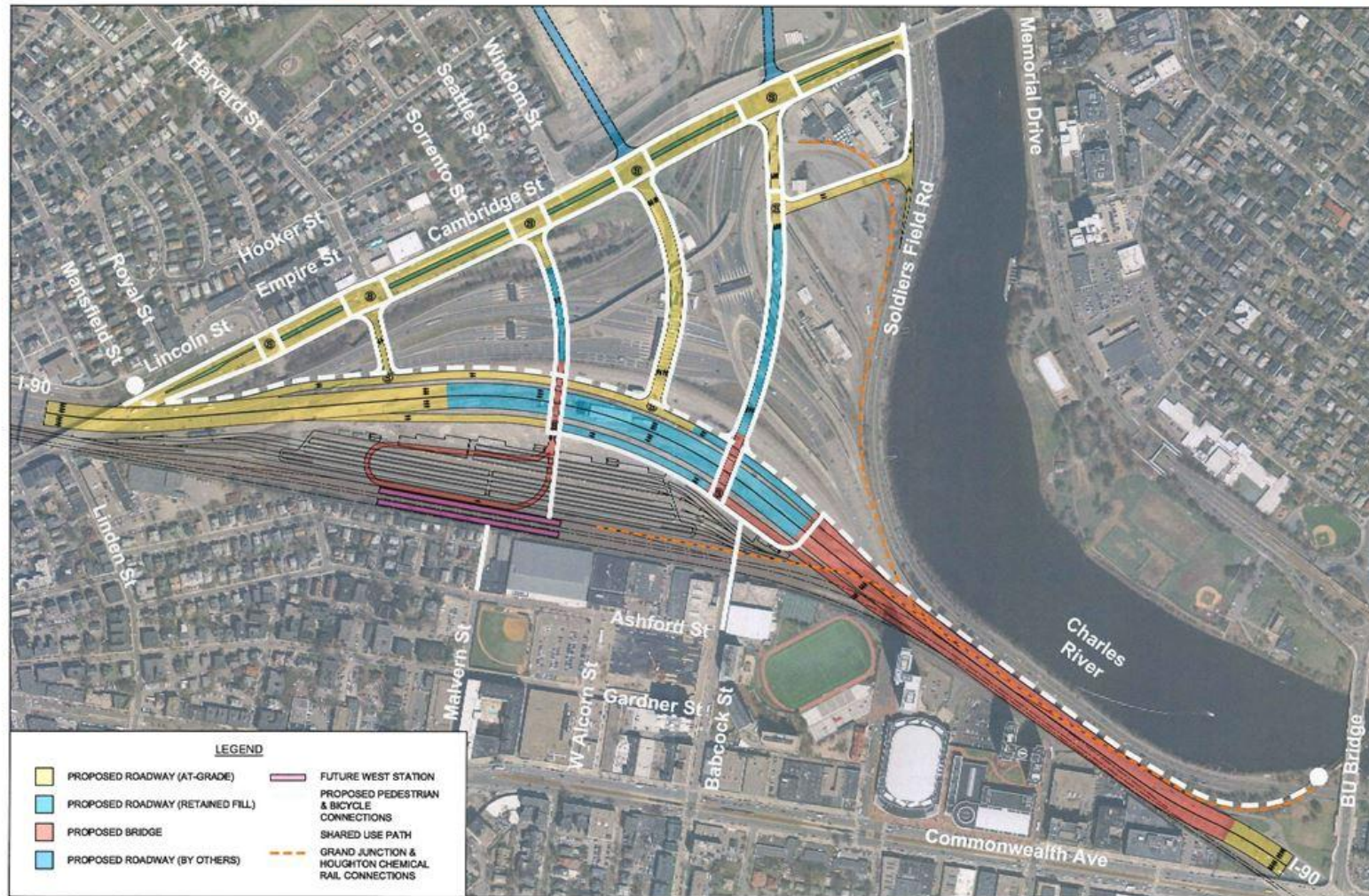
Allston Interchange: Multi-modal connections to West Station



Provide opportunity to develop direct multi-modal connections to West Station from North Allston and Boston University.

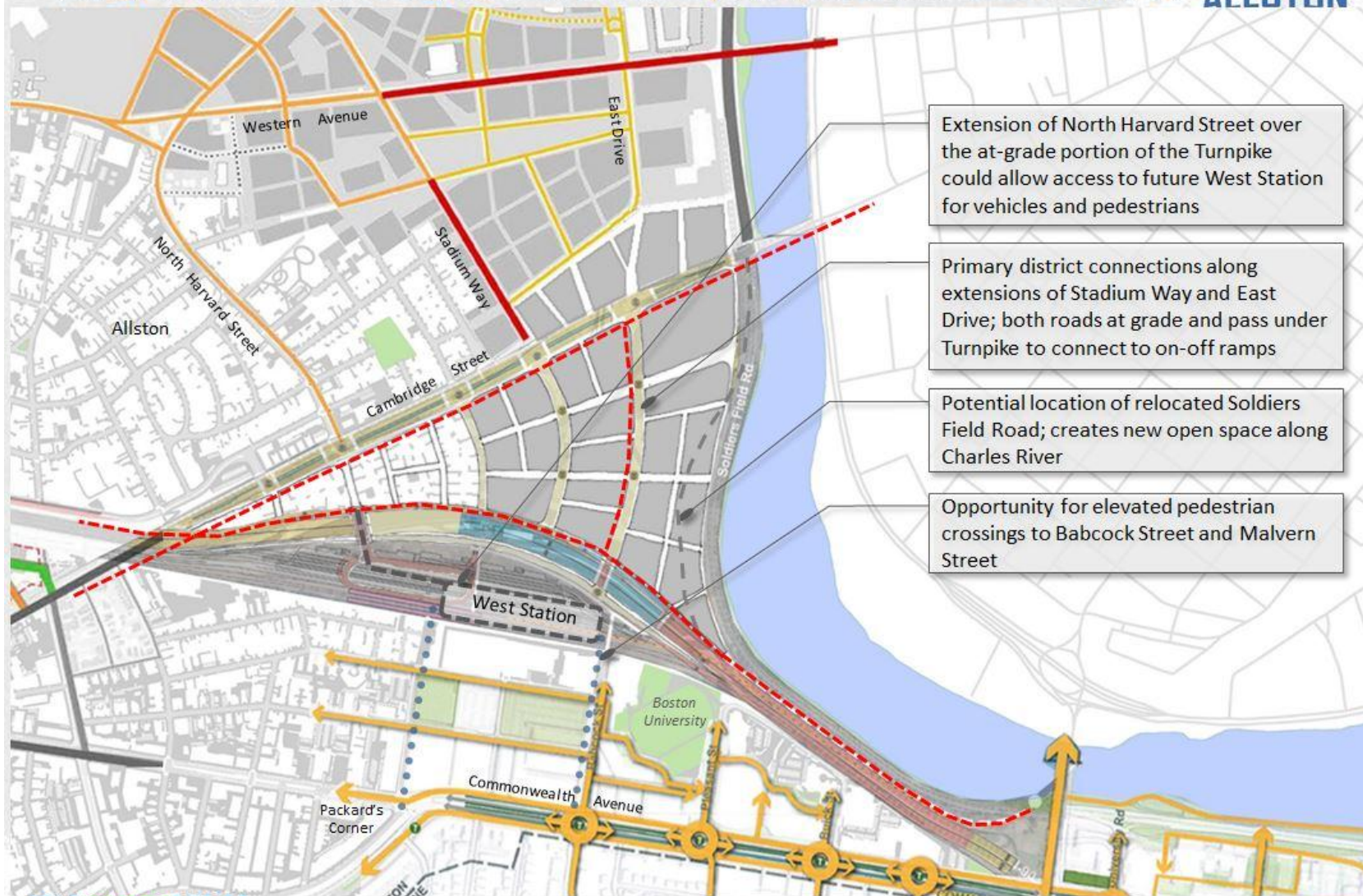
Allston Interchange: MassDOT Option 3F

INTERSTATE 90
ALLSTON



Diagrammatic street grid and block layout (based on MassDOT Opt 3F)

INTERSTATE 90
ALLSTON



Allston Interchange Taskforce

13 August 2014



Alternatives Analysis Screening Criteria

- **NEPA/MEPA Process**
- **Identification, Consideration, and Analysis of Alternatives**
- **Criteria cannot be so specific so as to unreasonably restrict range of alternatives**



Comments Received from:

- BRA/BTD
- LivableStreets/
- Charles River Conservancy
- MAPC
- walkBoston
- ABC
- City of Cambridge
- MASCO

Comments Grouped into Broad Categories:

- Multi-Modal Connectivity
- Community Cohesion
- Future Land Use
- Open Space
- Interstate & Highway Design Standards
- Purpose and Need

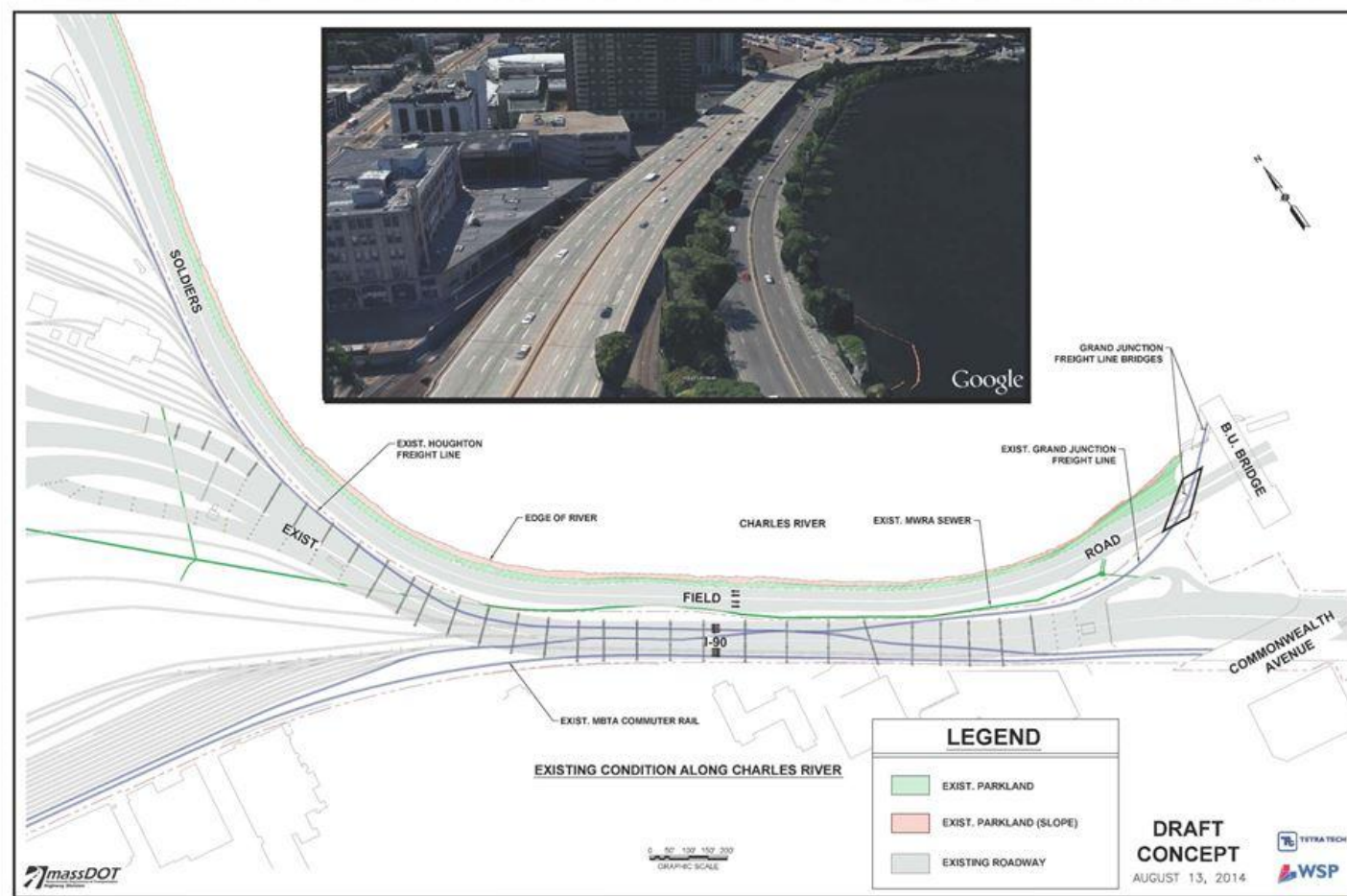


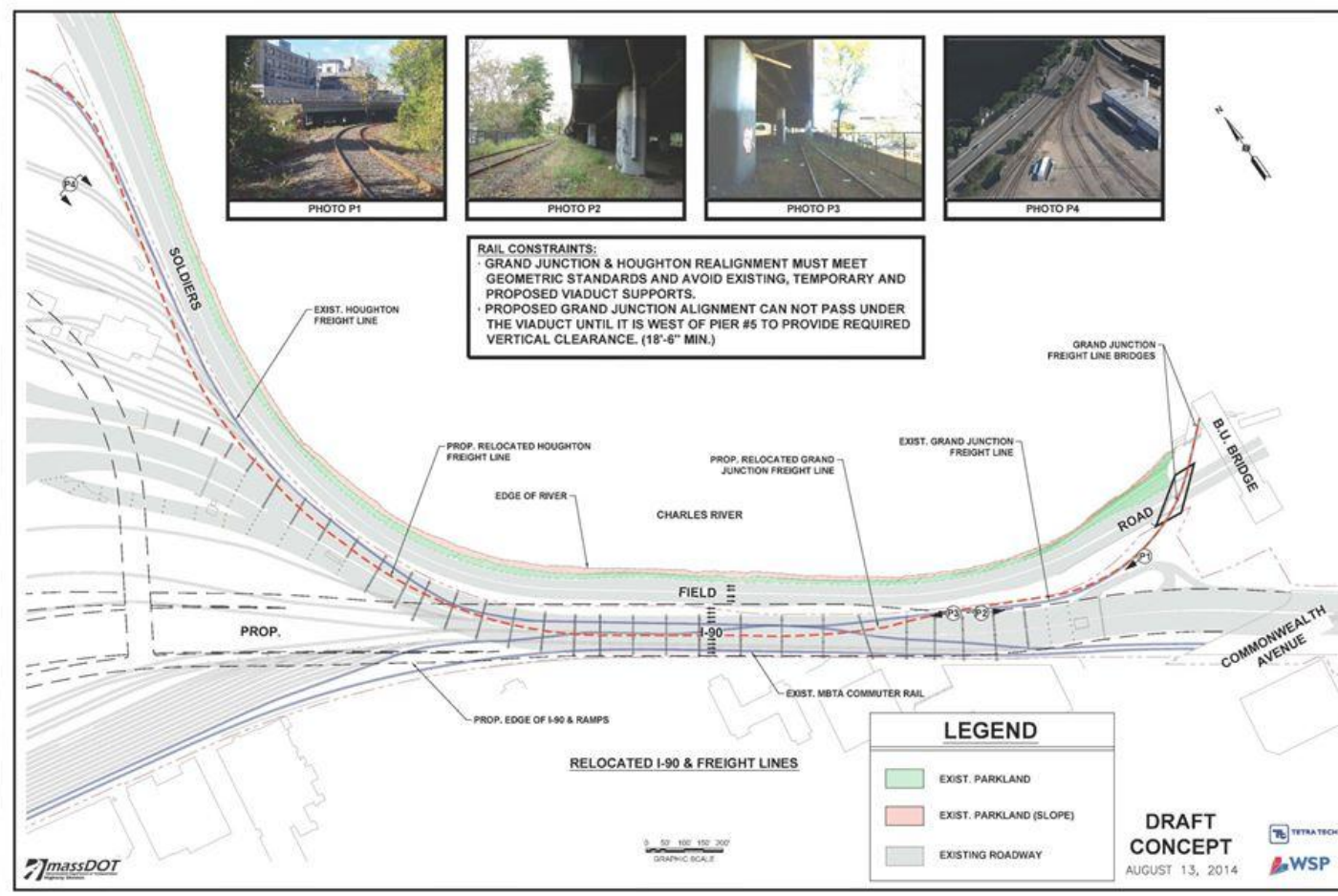
Comments Matrix Handout

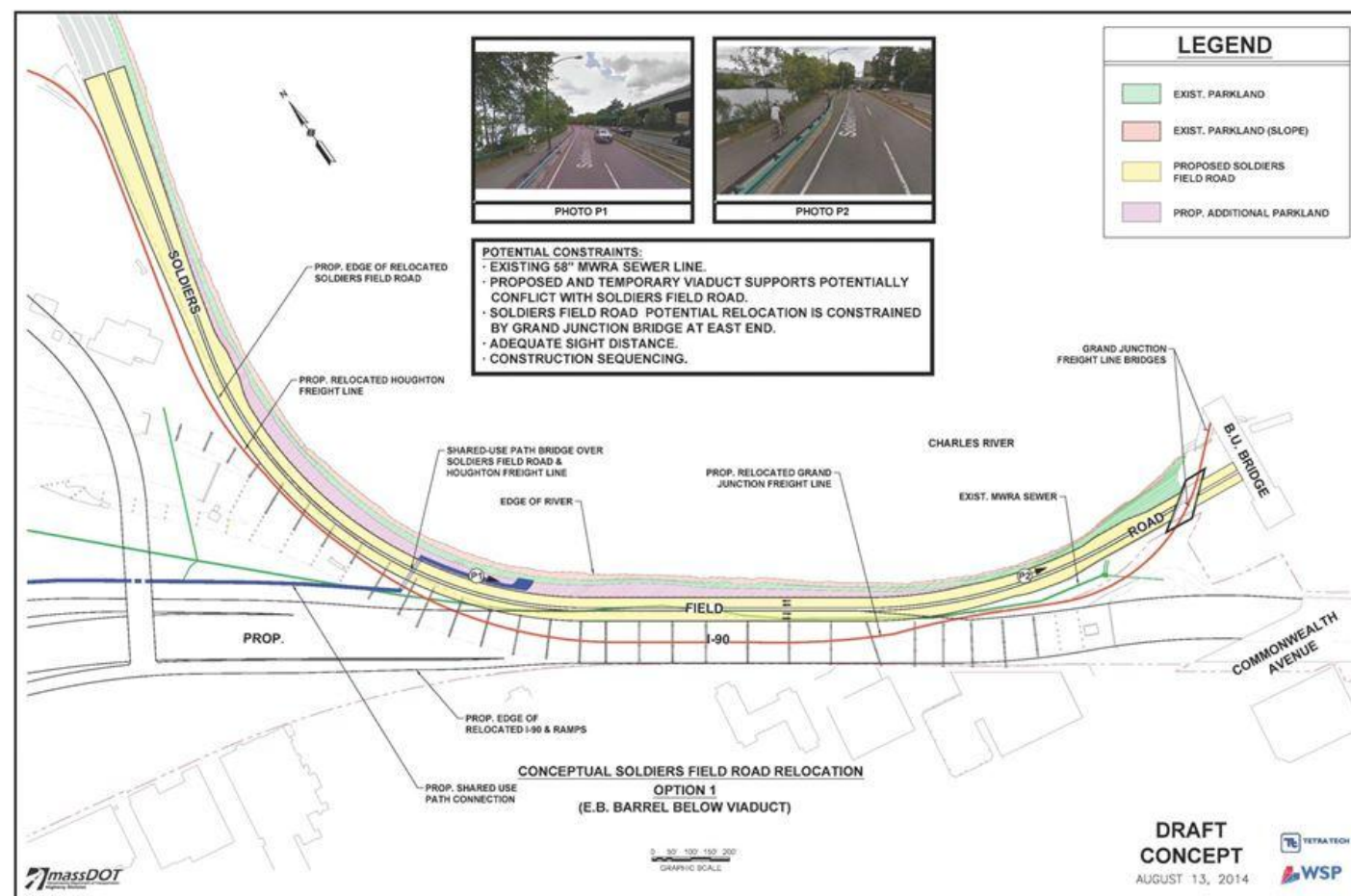
- Includes all comments received on criteria
- All relevant comments to be considered
- Code: A, B or C
 - A: Substance of comment included in criteria
 - B: Not screening criteria, factor to be considered during design development
 - C: Not within the scope of the I-90 Allston Interchange Project

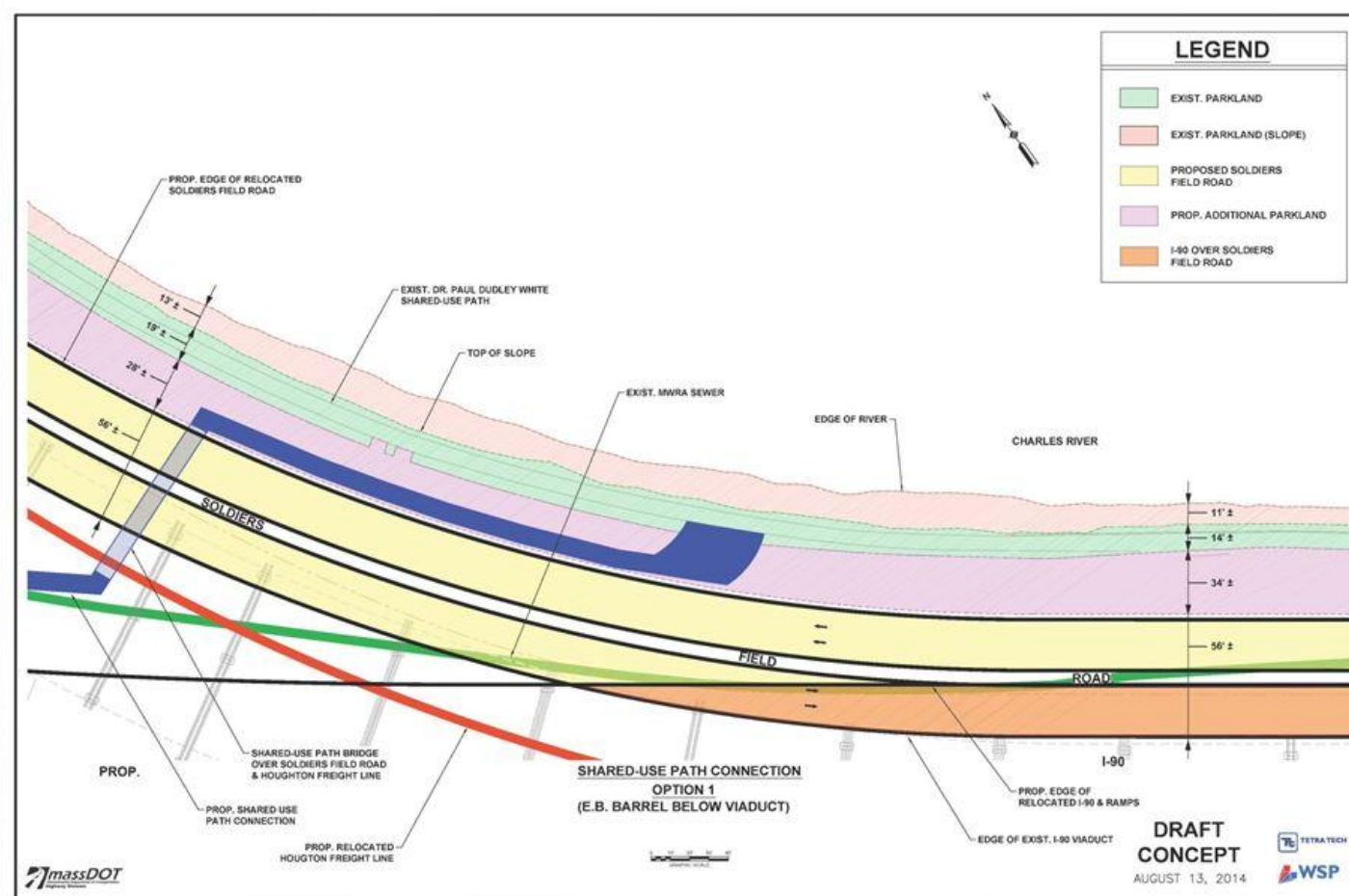
Soldiers Field Road Update

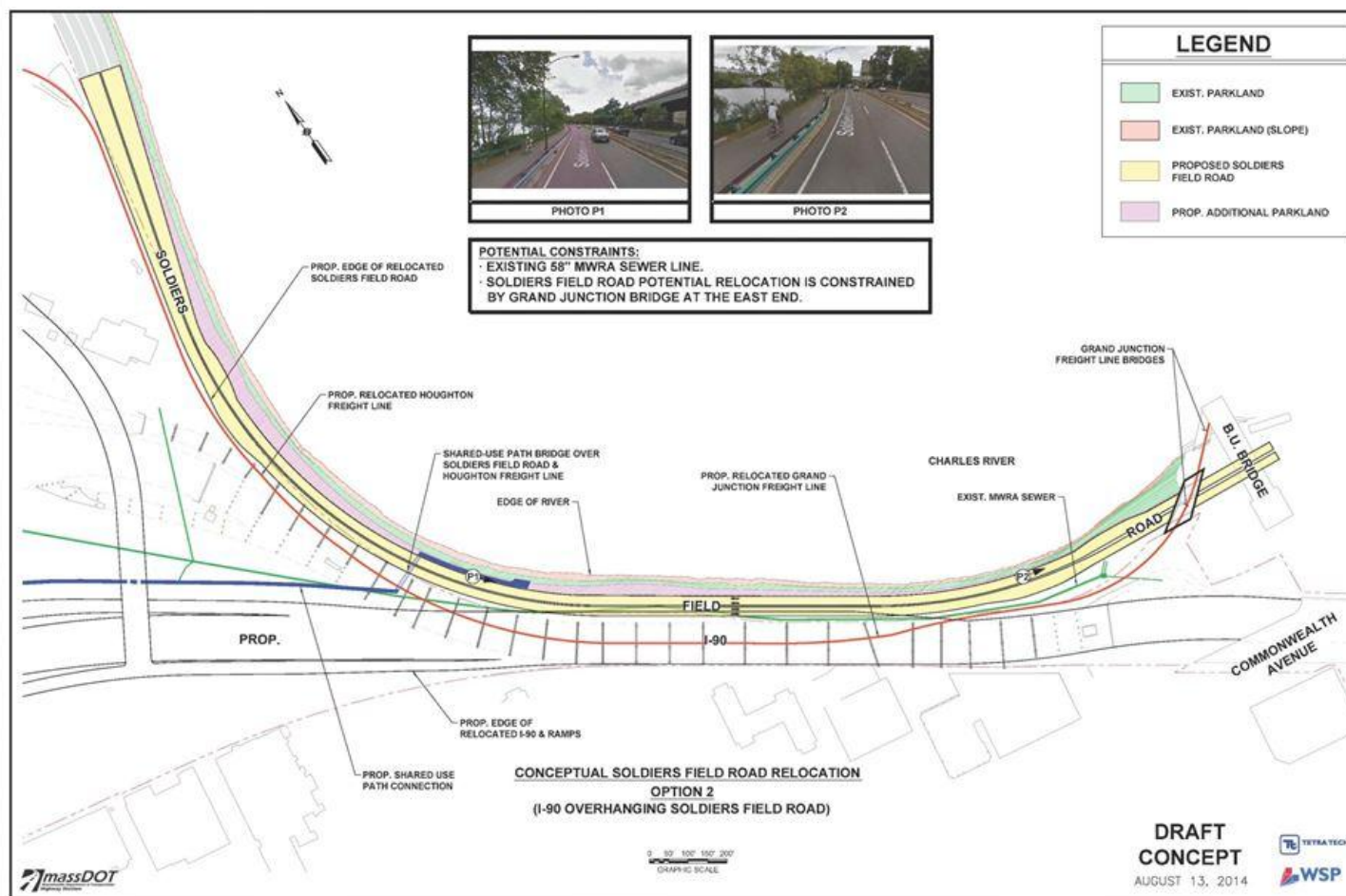


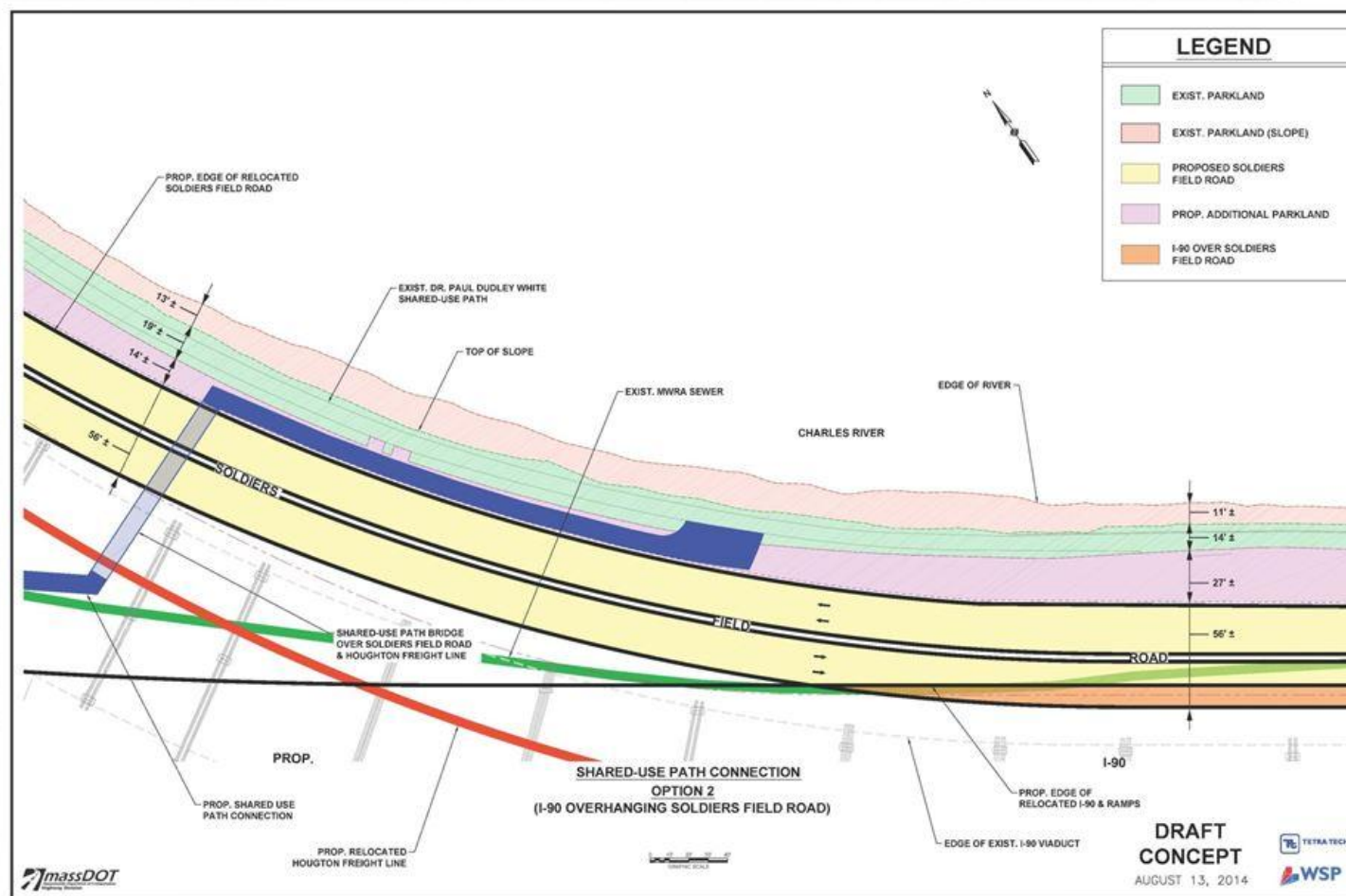


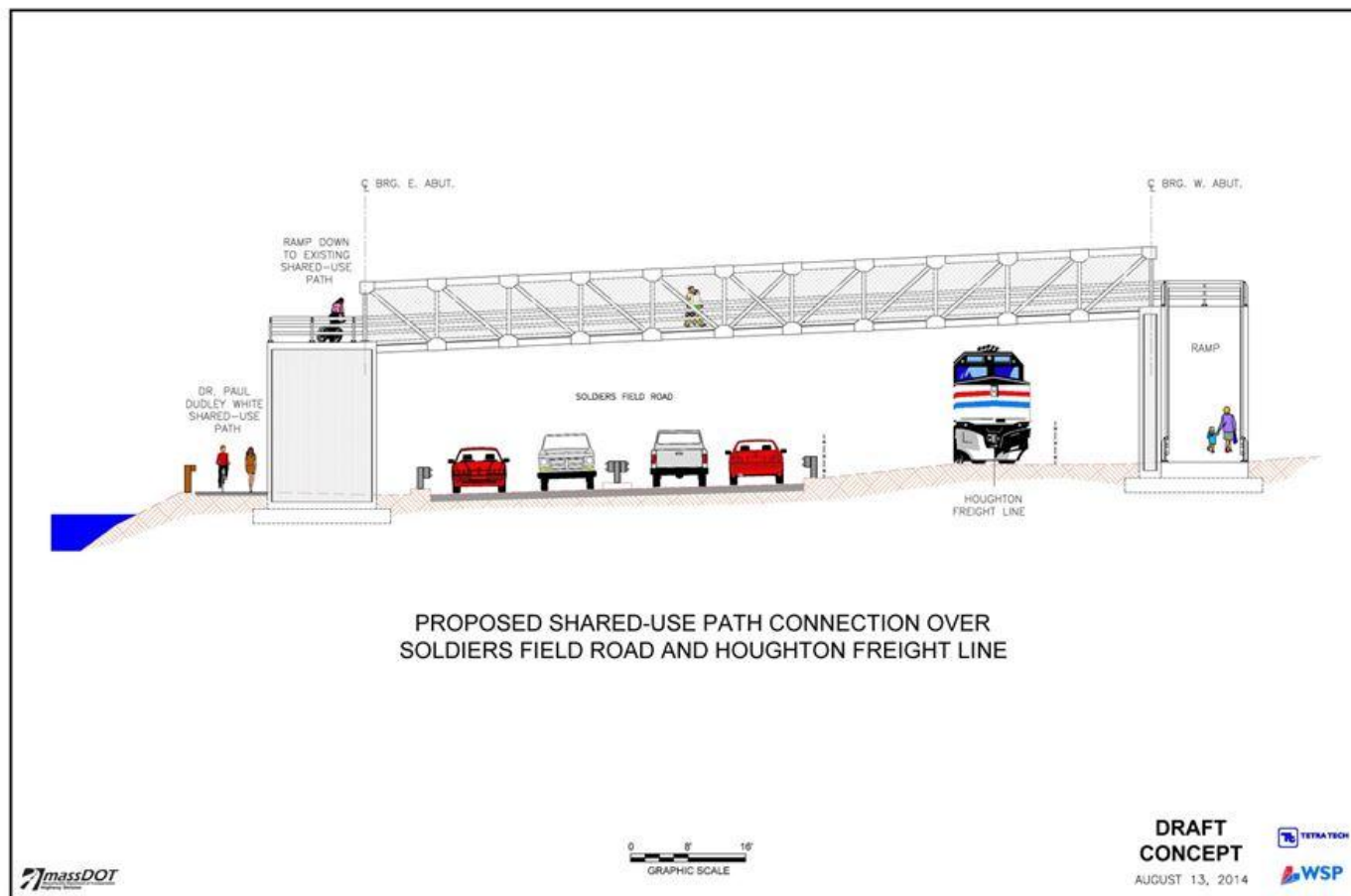












Discussion

Next Meeting:

September 3, 2014 – Fiorentino Community Center

